

IMPORTANT: THIS IS DATED INFORMATION. Parts must be ordered from a dealer or distributor.

**Hearth and Home Technologies does not sell directly to consumers.** Provide model number and serial number when requesting service parts from your dealer or distributor.

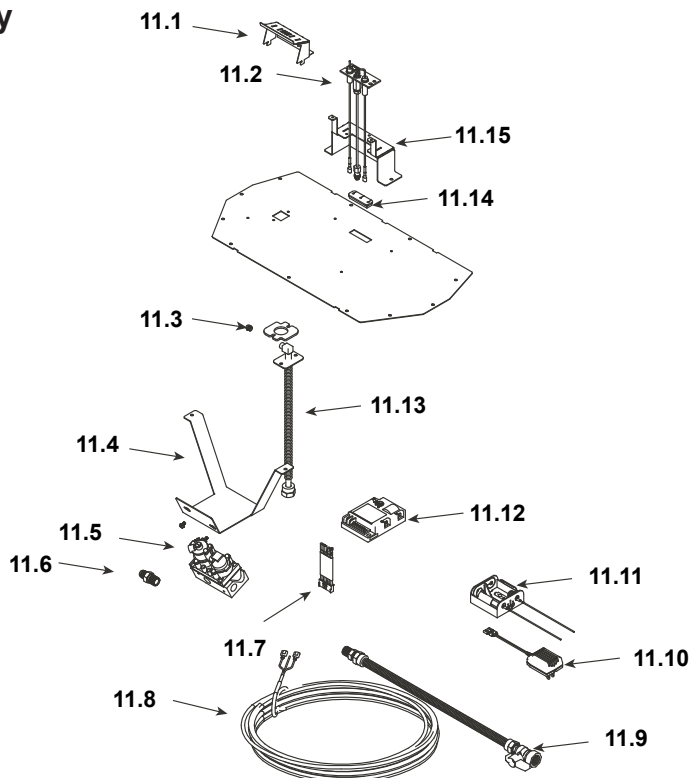


**Stocked  
at Depot**

ITEM	DESCRIPTION	COMMENTS	PART NUMBER	
1	Sheet Rock Ledge		2184-147	
2	Lower Cover Panel		SRV2184-103-BK	
3	Top Panel Finish Edge		SRV2292-102-BK	
4	Non Combustible Board		2198-405	
5	Base Pan		SRV2292-010-BK	
6	Burner Assembly		SRV2292-007-BK	Y
7	Glass Door Assembly		GLA-SLR	Y
8	Junction box		SRV4021-013	Y
9	Bracket, Junction Box		SRV2195-154	
10	Nailing Tab	Qty 2 req	2198-200	

Additional service part numbers appear on following page.

### #11 Valve Assembly



**IMPORTANT: THIS IS DATED INFORMATION.** Parts must be ordered from a dealer or distributor.  
**Hearth and Home Technologies does not sell directly to consumers.** Provide model number and serial number when requesting service parts from your dealer or distributor.



**Stocked  
at Depot**

ITEM	DESCRIPTION	COMMENTS	PART NUMBER	
11.1	Pilot Hood		SRV2269-123-BK	
11.2	Pilot Assembly NG		SRV2090-012	Y
	Pilot Assembly LP		2090-013	Y
11.3	Orifice NG (#42C)		582-842	Y
	Orifice LP (.057C)		582-057	Y
11.4	Valve Bracket		SRV2269-153	
11.5	Valve NG		593-500	Y
	Valve LP		SRV593-501	Y
11.6	Male Connector	Pkg of 5	303-315/5	Y
11.7	Module Wire Assembly		SRV593-590	Y
11.8	Thermostat Wire Assembly		SRV2118-170	Y
11.9	Flex Ball Valve Assembly		531-320A	Y
11.10	3 Volt Transformer		SRV593-593	Y
11.11	Battery Pack		SRV593-594	Y
11.12	Module		593-592	Y
11.13	Bulkhead W/Flex Tube		383-302A	Y
11.14	Grommet		SRV2118-420	
11.15	Pilot Bracket		SRV2292-127-BK	

Additional service part numbers appear on following page.



## SLR-C (COSMO)



**IMPORTANT: THIS IS DATED INFORMATION.** Parts must be ordered from a dealer or distributor. **Hearth and Home Technologies does not sell directly to consumers.** Provide model number and serial number when requesting service parts from your dealer or distributor.

[illegible]