

PARTS LIST

NO.

LIST DES PIECES

POL with excess flow check	S-01	Détendeur avec clapet de retenue
Regulator	S-02	Régulateur
20 ft Hose Assembly	S-03	Ensemble de tuyau 20 pd
Low Fire Orifice	S-11	Orifice de feu bas
Thermocouple	S-12	Thermocouple
1/4" Tee	S-14	Tee 1/4"
Safety Valve (Brass Body)	S-34	Soupape de sûreté (le corps en laiton)
Main Orifice	S-42	Sortie principale
1/4" Gas Strainer	S-43	1/4 " Passoire du gaz
1/4" x 1/4" Adaptor	S-44	1/4 " x 1/4 " Adaptateur
1/4" x 1/4" Flare Elbow	S-45	1/4 " x 1/4 " Coude
1/8" Female Pipe x 1/4" Flare Elbow	S-46	1/8 " la Pipe femelle x 1/4 " coude
Low Fire Line c/w Flare Nuts	S-47	Ligne de feu bas avec les Noix
1/4" Brass or Steel Coupling	S-53	1/4 " Couplant en laiton ou d'acier
Burner Head	S-54	Tête de brûleur

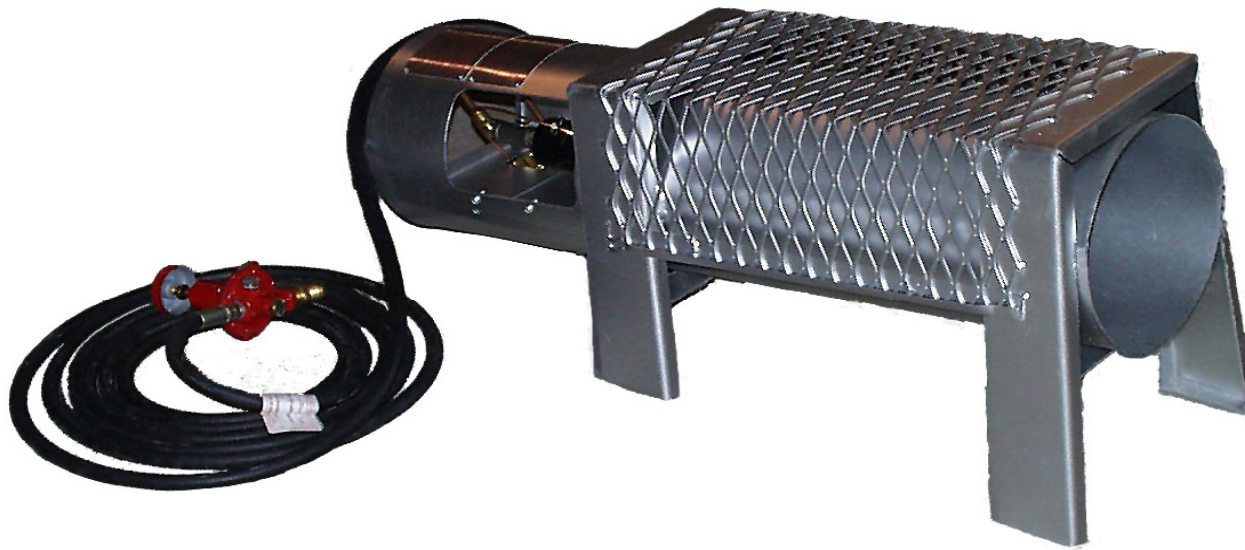
FLAGRO INDUSTRIES LIMITED
 26 Benfield Drive
 St. Catharines, Ontario L2S 3V5
 Canada

Telephone: 905-685-4243
 Fax: 905-685-0113
 E-mail: flagro@flagro.on.ca
 Website: www.flagro.on.ca

F-150 CONSTRUCTION HEATER

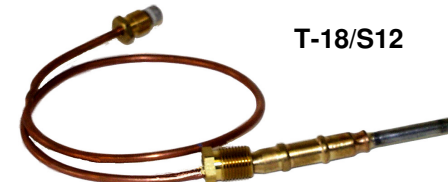
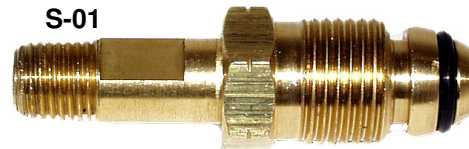
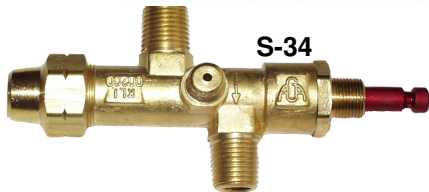
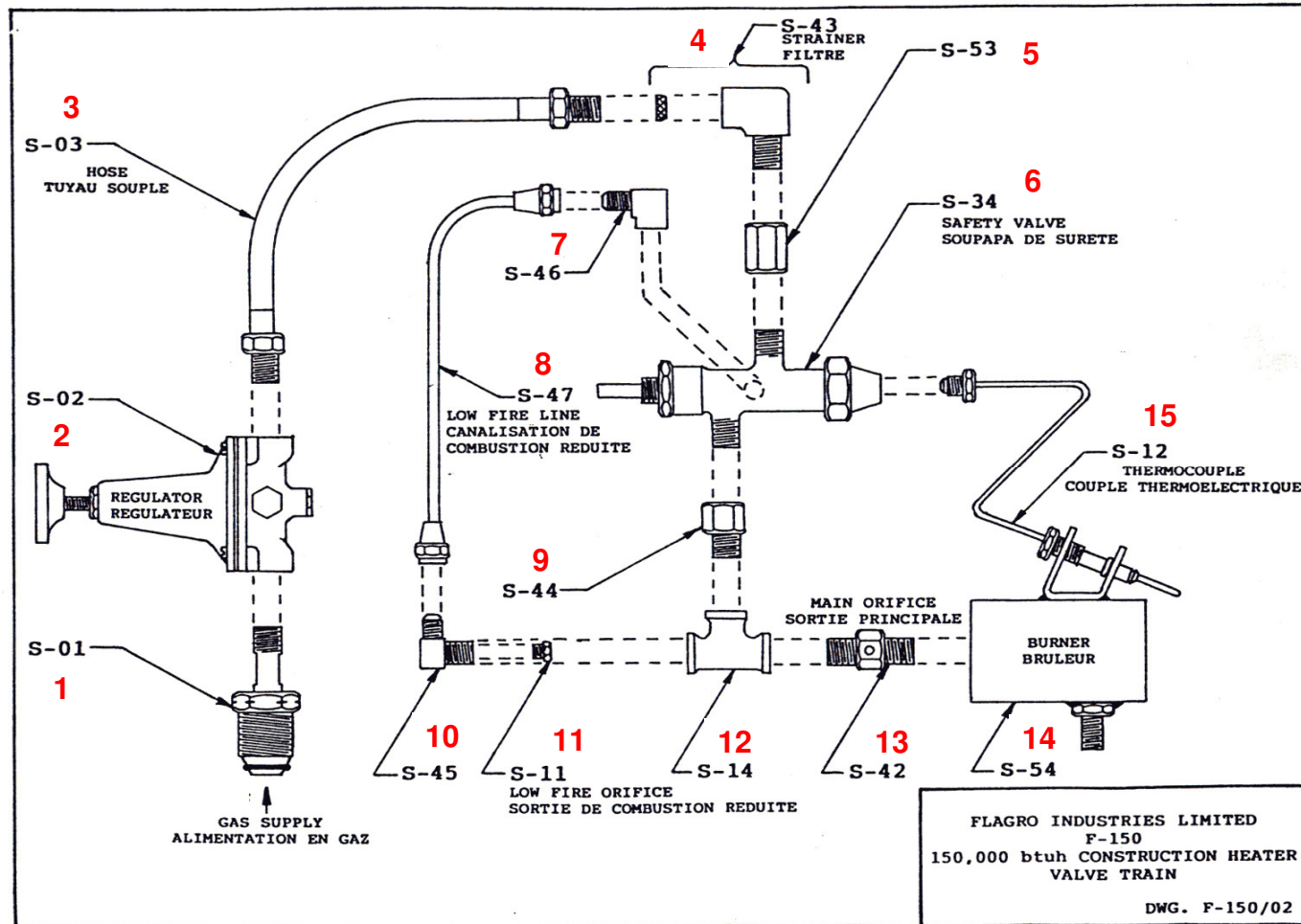
PARTS LIST

flagro
INDUSTRIES LIMITED



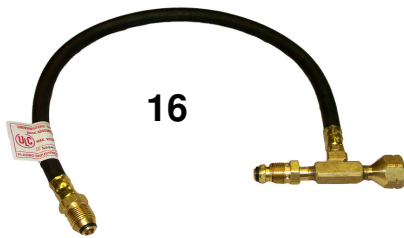
F-150 CONSTRUCTION HEATER

PARTS LIST



F-150 CONSTRUCTION HEATER

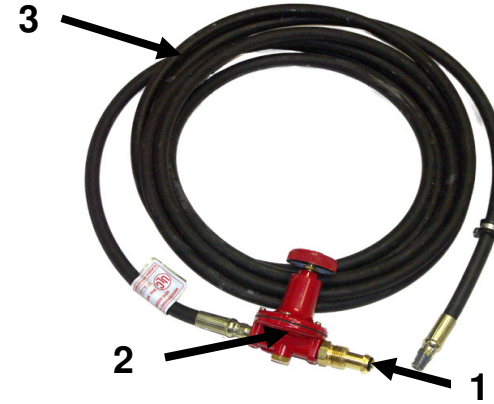
ACCESSORIES



16



17



PARTS LIST

Item #	Description	P/N
1	POL WITH EXCESS FLOW CHECK	S-01
2	HIGH PRESSURE REG.	S-02
3	20FT HOSE ASSEMBLY	S-03
4	1/4" Gas Strainer-Elbow	S-43
5	1/4" coupling	S-53
6	Safety Valve	S-34
7	1/4" MF x 1/8" FP Elbow	S-46
8	Low Fire line c/w flare nuts	S-47
9	1/4" MP x 1/4" FP adapter	S-44
10	1/4" MP x MF elbow-orifice holder	S-45
11	Low Fire orifice	S-11
12	1/4" B.M. tee	S-14
13	Main Orifice	S-42
14	Burner Head	S-54
15	18" Thermocouple (T18)	S-12/T-18
16	Two Cylinder Manifold	2001-S2
17	Three Cylinder Manifold	2001-S3

PARTS LIST FOR F-150 & F-375

Part Number	Part Description	
S-01	POL WITH EXCESS FLOW CHECK	
S-02	HIGH PRESSURE REGULATOR	
S-03	1/4ID MNPT X MNPT 20-FT HOSE ASSEMBLY	
S-04	1/4" BRASS STREET ELBOW	
S-05	1/4" GAS STRAINER - 1/4" MNPT X 1/4" FNPT	
S-06	BASO SAFETY VALVE (ALUMINUM BODY)	
S-07	1/4" STEEL NIPPLE	
S-11	LOW FIRE ORIFICE	
S-12	THERMOCOUPLE 18"	
S-13	1/4" B.M. STREET ELBOW	
S-14	1/4" B.M. TEE	
S-24	MAIN ORIFICE FOR F-375	
S-25	BURNER HEAD FOR F-375	
S-26	BURNER MOUNT CLAMP FOR F-375	
S-29	FAN MOTOR FOR B-375 FAN ASSEMBLY	
S-30	FAN BLADE FOR B-375 FAN ASSEMBLY	
S-31	MOTOR MOUNT CLAMP FOR B-375	
S-33	1/4" COUPLING (STEEL OR BRASS)	
S-34	SAFETY VALVE (BRASS BODY)	
S-38	1/8" FP C 1/4" MF CONNECTOR	
S-39	LOW FIRE LINE C/W FLARE NUTS FOR F-375	
S-40	1/4" MP X 1/4" MF ORIFICE HOLDER	
S-41	1/4" STEEL NIPPLE	
S-42	MAIN ORIFICE FOR F-150	
S-43	1/4" GAS STRAINER - ELBOW	
S-44	1/4" MP X 1/4" FB ADAPTER	
S-45	1/4" MP X MF ELBOW-ORIFICE HOLDER	
S-46	1/4" MF X 1/8" FB ELBOW	
S-47	LOW FIRE LINE C/W FLARE NUTS FOR F-150	
S-50	SHIELD FOR F-150	
S-51	BURNER MOUNT PLATE FOR F-150	
S-54	BURNER HEAD FOR F-150	
S-64	HOSE ASSEMBLY SAFETY CLIP	