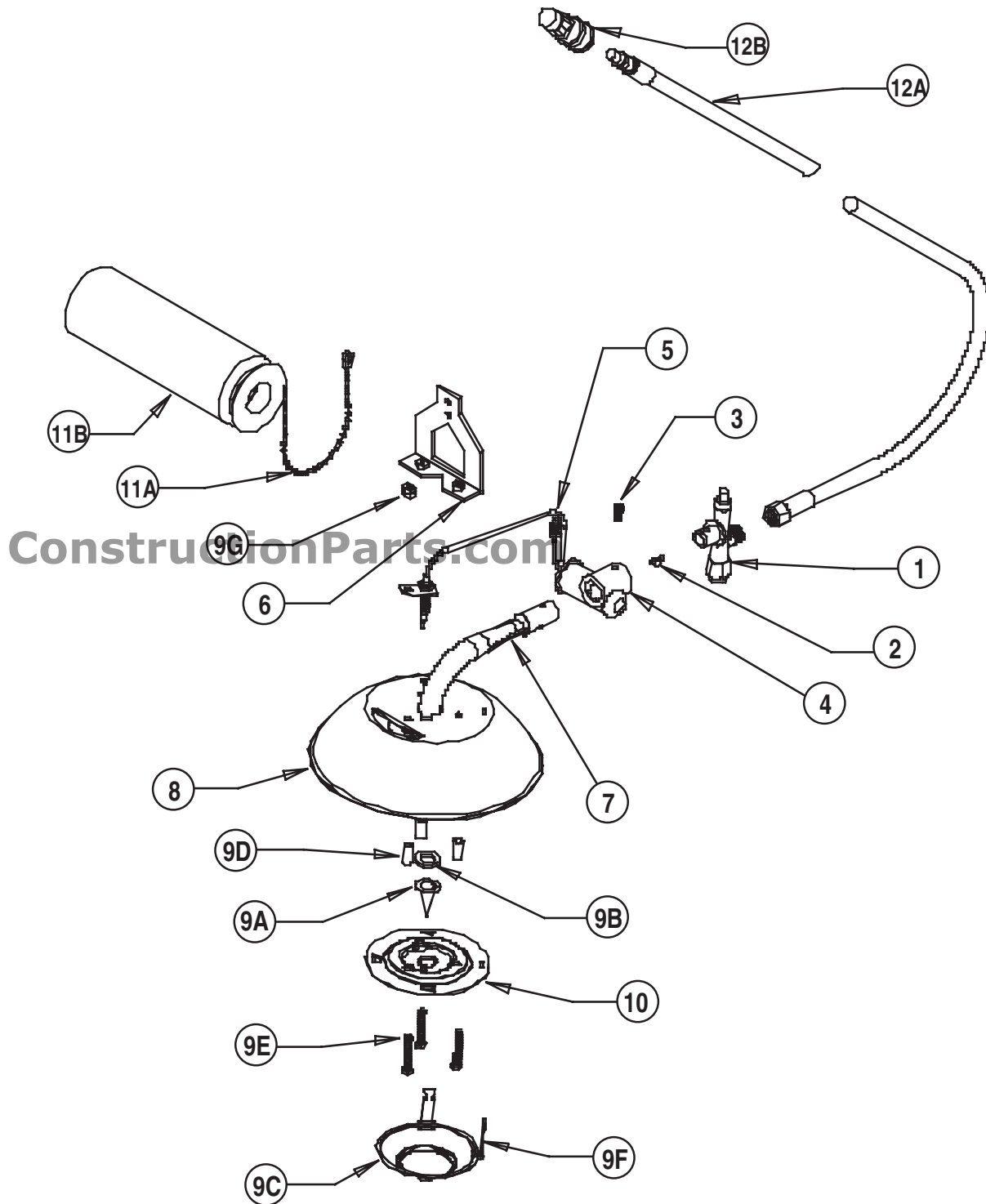


Parts Identification

ConstructionParts.com
Infraconic I-3 M
Model I-3B

888-634-4289

PARTS SCHEMATIC



ConstructionParts.com

888-634-4289

PARTS LIST

Item	Description		Part No.
1	Safety Control Valve		22089
2	Orifice	Natural Gas	23739
		Propane Gas	23431
3	Screw		24943
4	Air Intake		23948
4A	Filter Elbow, (Not Illustrated)	Natural Gas	23950
		Propane Gas	24166
4B	Screw, Elbow to Air Intake (Not Illustrated)		06658
5	Thermocouple, w/ Bracket and Nuts		23635
6	Bracket		23505
7	Venturi Tube	Natural Gas	23740
		Propane Gas	23438
8	Shroud		23439
9	Combustion Cone Kit		23543
	<i>Consisting Of:</i>		
9A	Inner Cone		23435
9B	Gasket		23434
9C	Outer Cone		23437
9D	Spacer		23430
9E	Screw, 10-32 x 1 1/2		23636
9F	Truss Clip		09559
9G	Nuts		09578
10	Burner Plate		23436
11	Filter Kit		23639
	<i>Consisting Of:</i>		
11A	Cable Tie, Beaded		23625
11B	Filter		23508
12A	Gas Hoses		
	6 ft.,Rigid x Swivel w/Excess Flow Valve		24616
	8 ft.,Rigid x Swivel w/ Excess Flow Valve		24617
	6 ft.,Male Quick Connect w/Excess Flow Valve and Female Quick Coupling Kit		24614
	8 ft.,Male Quick Connect w/Excess Flow Valve and Female Quick Coupling Kit		24615
12B	Quick Disconnect Assembly w/ Excess Flow Valve		24650