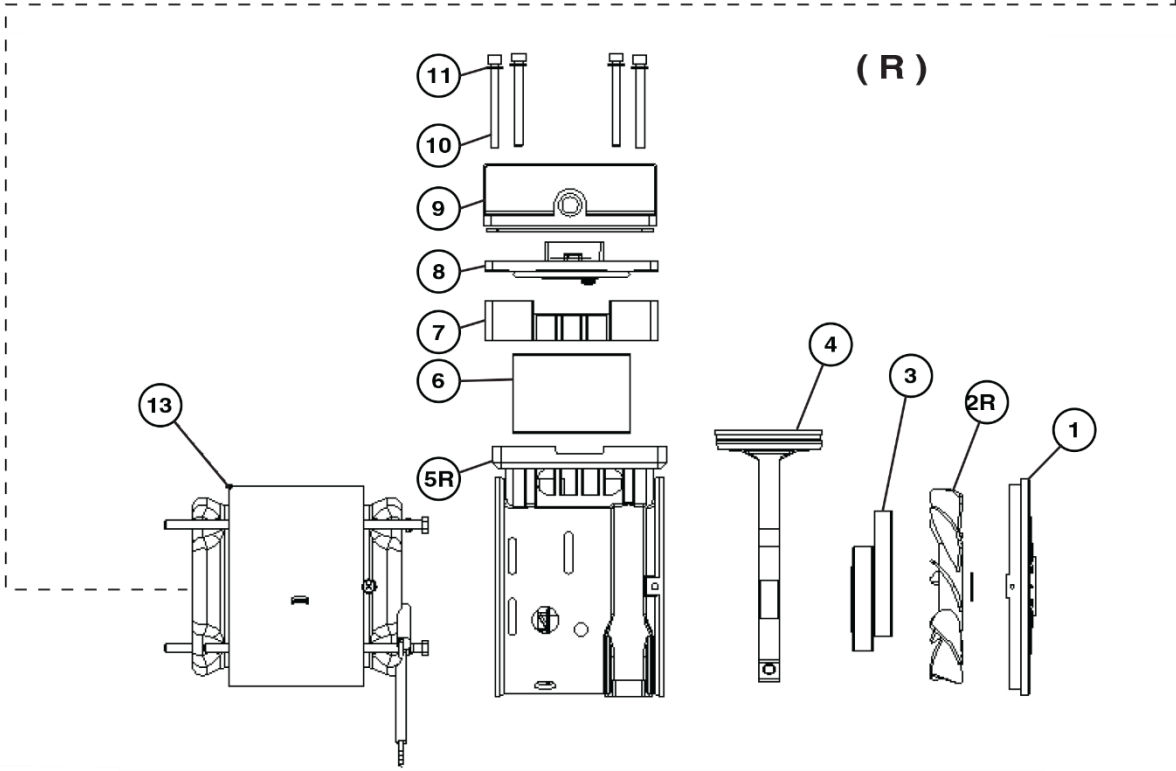
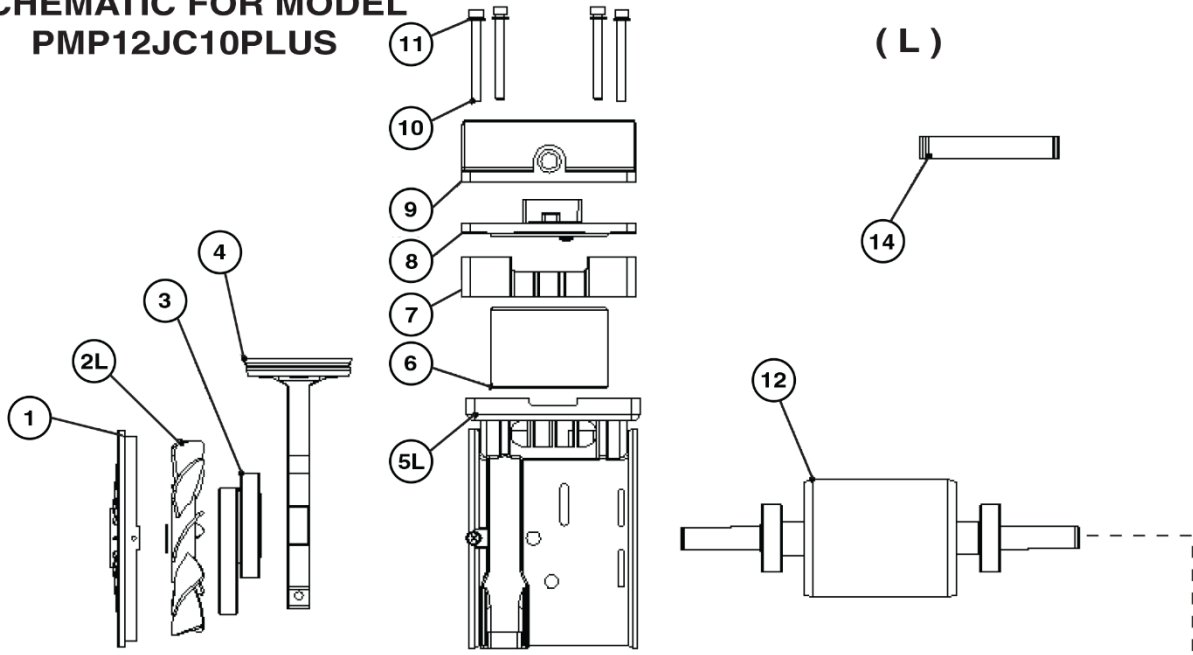
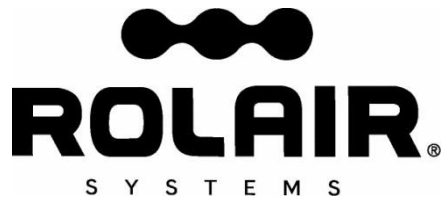


# ROLAIR

## SCHEMATIC FOR MODEL PMP12JC10PLUS



( L ) ( R ) Denotes side of motor/pump when viewed from back or with Tank and Pressure Switch in front of motor/pump.



## PARTS LIST FOR MODEL PMP12JC10PLUS

Schem #	Description	Part #	Qty.
1	Motor Cover	JC10P28	2
2L	Fan (left side only)	U1002	1
2R	Fan (right side only)	U1003	1
3	Eccentric	U1004	2
4	Connecting Rod/Piston Assembly	JC10P5	2
5L	Crankcase (left side only)	JC10P29	1
5R	Crankcase (right side only)	JC10P30	1
6	Cylinder	JC10P8	2
7	Spacer – Cylinder	JC10P9	2
8	Valve Plate Assembly	JC10P10	2
9	Head	JC10P31	2
10	Head Bolt	JC10P16	8
11	Washer	JC10P18	8
12	Rotor*	N/A	1
13	Stator*	N/A	1
14	Connecting Tube	JC10P32	2

\* Rotor & Stator are not cost effective to replace. Order complete motor/pump instead, part #U1200.