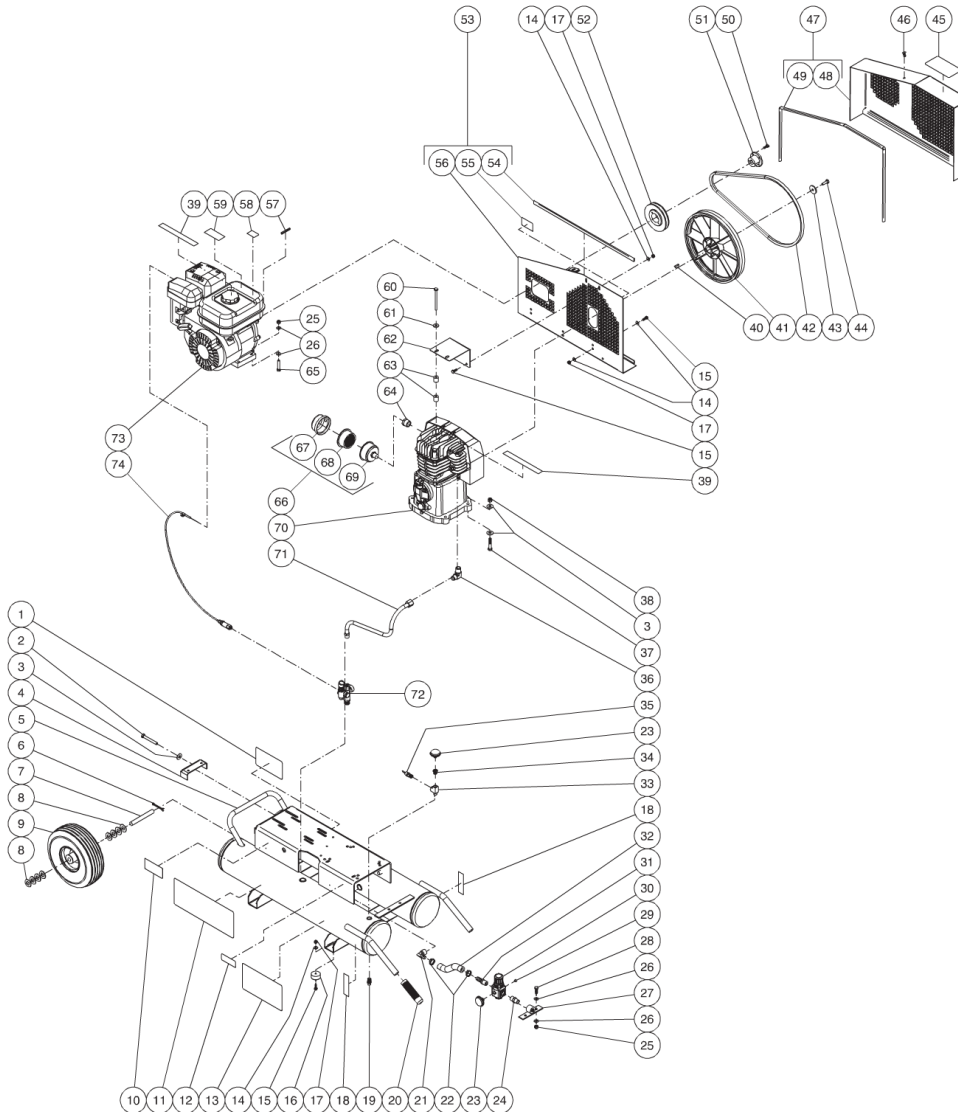




AC1-PR07-08M / AC1-PR07-08M (sn:20025555-99999999)

TANK ASSEMBLY



Id	Item #	Description	Quantity
1	N/A SEP.	DECAL-MAINTENANCE INSTRUCTIONS (SEE 34-9016)	1
2	27-0576	BOLT	1
3	28-0023	WASHER	9
4	20-0614A01	BELT TENSIONER PLATE	1
5	854-0027	AIR TANK ASSEMBLY (INC. 12-13, 18)	1
5	12-0056A1	AIR TANK ASSEMBLY	1
6	43-0092	COTTER PIN	2

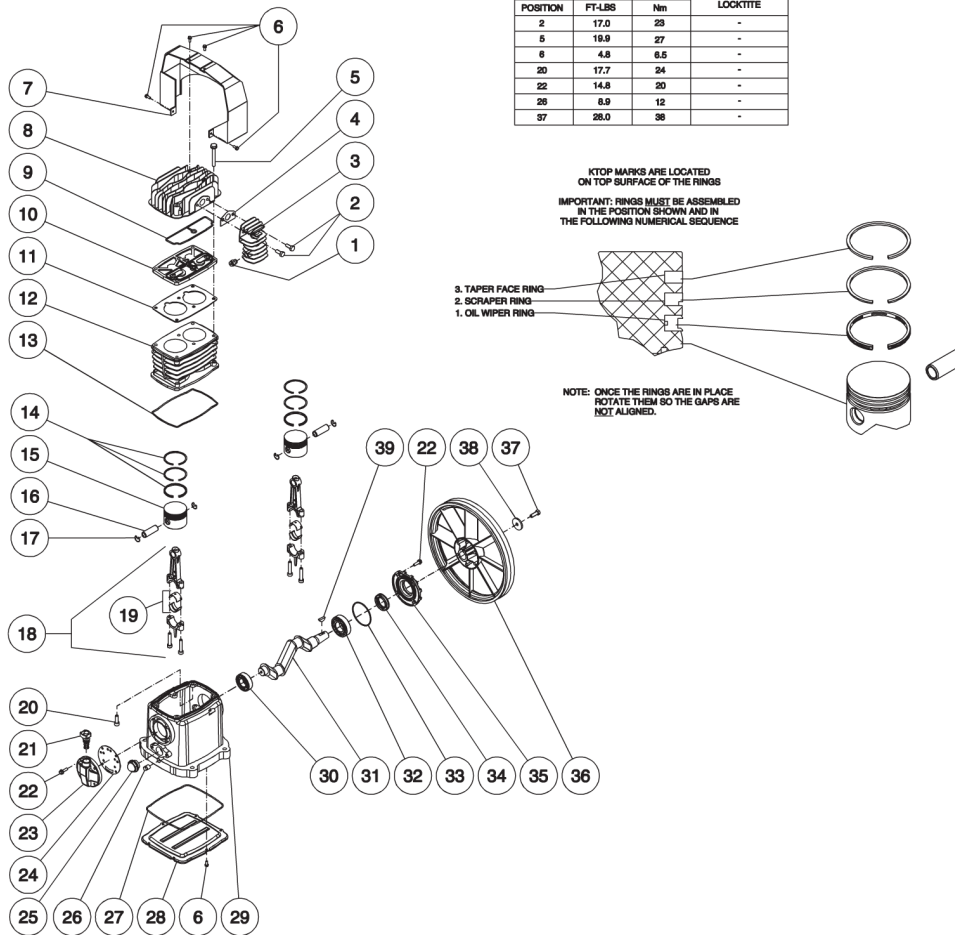
Id	Item #	Description	Quantity
7	20-0420	AXLE	1
8	28-0008	WASHER	8
9	14-0017	WHEEL	1
10	N/A	DECAL-DATA PLATE	1
11	34-0814	DECAL- MI-T-M	1
12	N/A Sep.	DECAL- WARNING: HOT SURFACE (SEE 34-9016)	1
13	N/A Sep.	DECAL- DANGER/WARNING/CAUTION (SEE 34-9016)	1
14	28-0002	WASHER	12
15	27-0015	BOLT	11
16	14-0069	ISOLATOR	4
17	30-0155	LOCKNUT	9
18	N/A Sep.	DECAL- DRAIN TANK (SEE 34-9016)	2
19	23-0312	DRAIN VALVE	2
20	7-0143	HANDLE GRIPS	2
21	23-0418	ELBOW	1
22	42-0011	HOSE CLAMP	2
23	22-0257	PRESSURE GAUGE	2
24	24-0010	NIPPLE	1
25	30-0157	LOCKNUT	6
26	28-0003	WASHER	12
27	20-0421A01	REGULATOR MOUNTING BRACKET	1
28	27-0067	BOLT	2
29	24-0082	REGULATOR PLUG	1
30	22-0231	ADJUSTABLE REGUALATOR	1
31	23-0105	HOSE BARB	1
32	15-0007	HOSE *(ONE FOOT REQUIRED)	1
33	23-0127	TEE	1
34	23-0111	ADAPTER	1
35	22-0228	SAFETY RELIEF VALVE	1
36	24-0074	ELBOW	1
37	27-0121	BOLT	4
38	30-0159	LOCKNUT	4
39	N/A Sep.	DECAL- CHECK OIL TAPE (SEE 34-9016)	2
40	43-0102	WOODRUFF KEY W/COMPRESSOR	1
41	10-0131	FLYWHEEL W/COMPRESSOR	1
42	11-0040	DRIVE BELT	1
43	28-1032	FLATWASHER W/COMPRESSOR	1
44	27-8033	BOLT W/COMPRESSOR	1
45	N/A Sep.	DECAL- OPERATING INSTRUCTIONS/GAS (SEE 34-9016)	1

Id	Item #	Description	Quantity
46	33-0197	FASTENER	1
47	854-0009	BELTGUARD ASSEMBLY (INCLUDES 48-49)	1
48	N/A Sep.	BELTGUARD COVER (SEE 854-0009)	1
49	33-0020	EDGING *(FOUR FEET REQUIRED)	1
50	27-0015	BOLT	2
51	9-0009	BUSHING	1
52	10-0105	SHEAVE	1
53	854-0007	BELTGUARD BACK ASSEMBLY (INCLUDES 54-56)	1
54	33-0020	EDGING *(TWO FEET REQUIRED)	1
55	N/A Sep.	DECAL- WARNING:BELTGUARD IN PLACE (SEE 34-9016)	1
56	N/A Sep.	BELTGUARD BACK (SEE 854-0007)	1
57	43-0073	KEY	1
58	N/A Sep.	DECAL- WARNING: MUFFLER HOT (SEE 34-9016)	1
59	N/A Sep.	DECAL- CAUTION: ALLOW TO COOL (SEE 34-9016)	1
60	27-8044	BOLT	2
61	28-0022	WASHER	2
62	20-0740A01	SUPPORT BRACKET	1
63	33-0358	SPACER	4
64	23-0023	BUSHING	1
65	27-0070	BOLT	4
66	19-0083	AIR FILTER ASSEMBLY (INC. 67-69)	1
67	19-0084	FRONT FILTER HOUSING	1
68	19-0082	FILTER REPLACEMENT	1
69	N/A Sep.	REAR FILTER HOUSING (SEE 19-0083)	1
70	3-0175	COMPRESSOR W/FLYWHEEL	1
71	15-0245	HOSE	1
72	22-0346	PILOT VALVE	1
73	1-0133	ENGINE- 7.0 HP SUBARU	1
74	33-0401	BULLWHIP THROTTLE CONTROL	1
	34-9016	SAFETY DECAL KIT (INC. 1, 12-13, 18, 39, 45, 55, 58-59)	
		*MUST ORDER IN ONE FOOT LENGTHS	



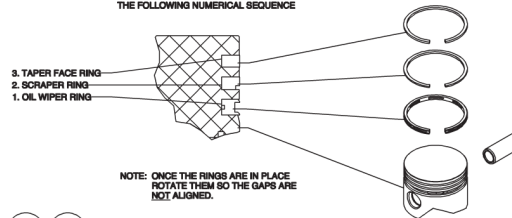
AC1-PR07-08M / AC1-PR07-08M (sn:20025555-99999999)

PUMP



TORQUE SPECIFICATIONS			REQUIRED LOCKTITE
POSITION	FT-LBS	Nm	
2	17.0	23	-
5	19.9	27	-
6	4.8	6.5	-
20	17.7	24	-
22	14.8	20	-
26	8.9	12	-
37	28.0	38	-

KTOP MARKS ARE LOCATED
ON TOP SURFACE OF THE RINGS
IMPORTANT: RINGS MUST BE ASSEMBLED
IN THE POSITION SHOWN AND IN
THE FOLLOWING NUMERICAL SEQUENCE



Id	Item #	Description	Quantity
1	22-0253	EASY START VALVE	1
2	27-8032	SCREW	2
3	46-1171	AFTER COOLER	1
4	N/A Sep.	AFTER COOLER GASKET (SEE 70-0393)	1
5	27-9577	SCREW	6
6	27-9575	SCREW	10
7	46-1197	AIR SHROUD	1
8	46-1172	HEAD	1
9	N/A Sep.	HEAD GASKET (SEE 70-0393)	1
10	22-0388	HOLDER PLATE VALVE	1

Id	Item #	Description	Quantity
11	N/A Sep.	CYLINDER GASKET (SEE 70-0393)	1
12	46-1170	CYLINDER	1
13	N/A Sep.	CRANKCASE GASKET (SEE 70-0393)	1
14	70-0392	RING SET - 65 MM	2
14	70-0268	RING SET - 65.4 MM	2
15	N/A	PISTON	2
16	N/A	WRIST PIN	2
17	N/A	SNAP RING	2
18	N/A	CONNECTING ROD	2
19	N/A	CONNECTING ROD BEARING	2
20	27-8194	SCREW	4
21	46-0818	CRANKCASE FILL PLUG W/ O-RING	1
22	27-8002	BOLT	8
23	46-0819	OIL FILL END CAP	1
24	N/A Sep.	OIL FILL END CAP GASKET (SEE 70-0393)	1
25	46-0820	SIGHT GLASS	1
26	39-0106	OIL DRAIN PLUG	1
27	N/A Sep.	OIL PAN O-RING (SEE 70-0393)	1
28	N/A	OIL PAN	1
29	N/A	CRANKCASE	1
30	48-0060	BALL BEARING	1
31	N/A	PISTON CRANKSHAFT	1
32	48-0024	BALL BEARING	1
33	N/A Sep.	END CAP GASKET (SEE 70-0393)	1
34	26-0208	CRANKSHAFT SEAL	1
35	46-1169	FRONT END CAP	1
36	10-0131	FLYWHEEL	1
37	27-8033	BOLT	1
38	28-1032	WASHER	1
39	43-0102	WOODRUFF KEY	1
KIT	70-0393	GASKET KIT (INC. 4, 9, 11, 13, 24, 27, 33)	