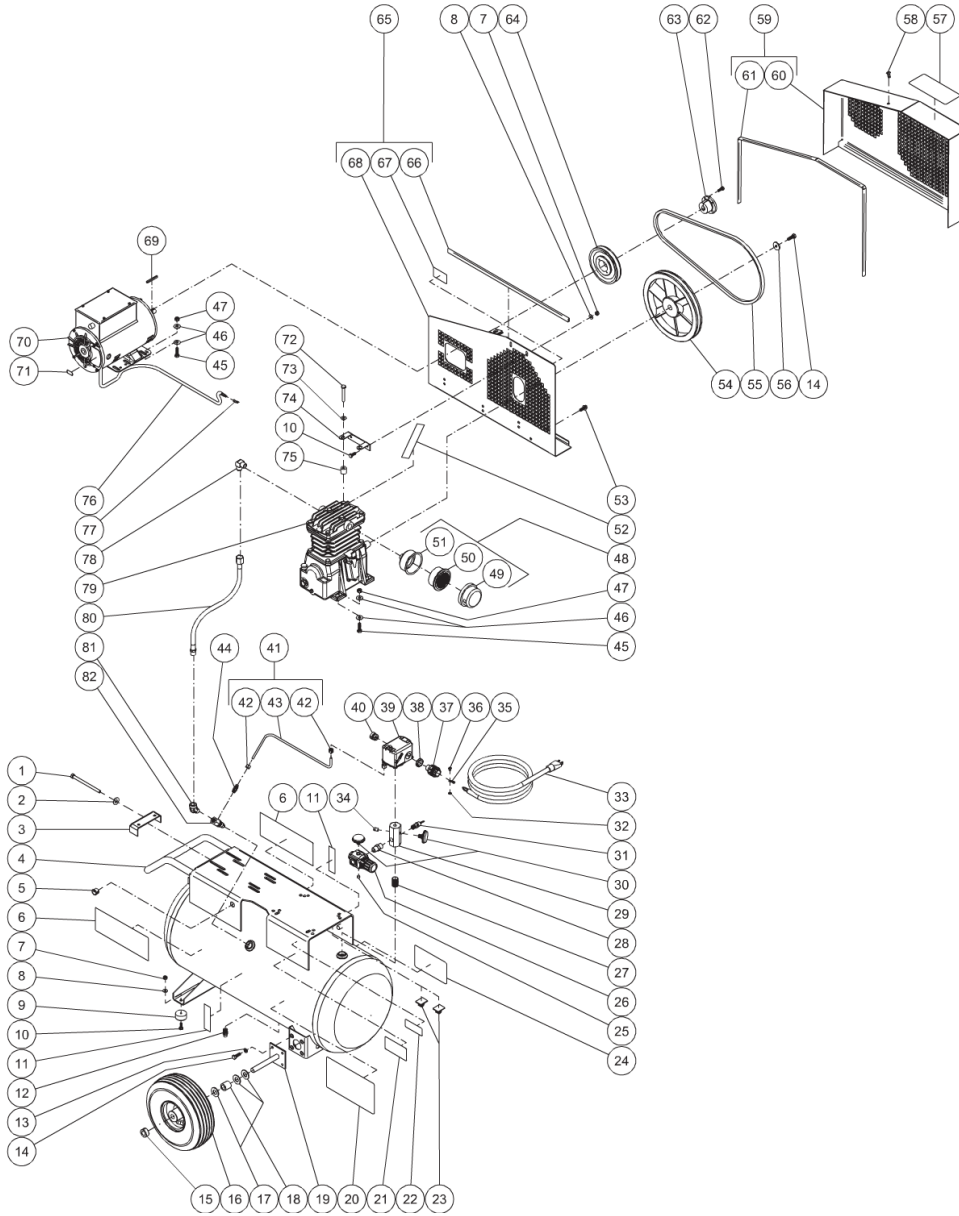




AC1-PE02-20M / AC1-PE02-20M (sn:20035391-99999999)

TANK ASSEMBLY



Id	Item #	Description	Quantity	Rev	Comments
1	27-0133	BOLT	1		
2	28-0023	FLATWASHER	1		
3	20-0614A01	BELT TENSIONER PLATE	1		
4	N/A	AIR TANK ASSEMBLY	1		
5	32-0465	BUSHING	1		

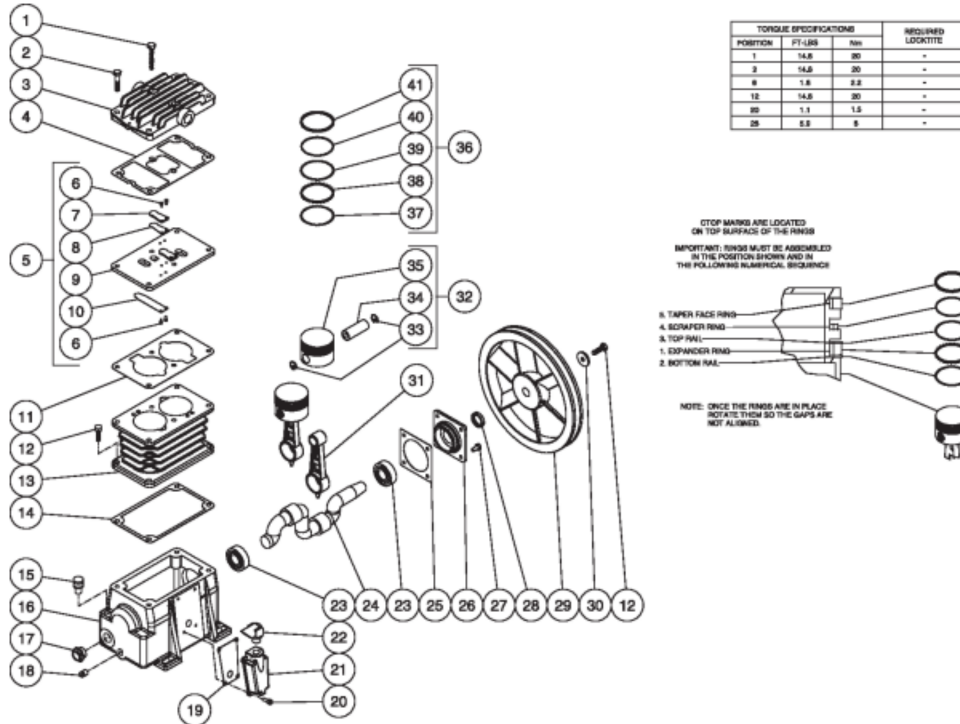
Id	Item #	Description	Quantity	Rev	Comments
6	34-0828	DECAL- MI-T-M	2		
7	30-0155	LOCKNUT	4		
8	28-0002	WASHER	4		
9	14-0069	ISOLATOR	2		
10	27-0015	SCREW	6		
11	N/A Sep.	DECAL- DRAIN TANK (SEE 34-9016)	2		
12	23-0312	PETCOCK	1		
13	29-0007	LOCKWASHER	8		
14	27-0067	BOLT	9		
15	33-0351	COLLAR / SHAFT	2		
16	14-0017	WHEEL	2		
17	28-0008	WASHER	6		
18	62-0188	AXLE SPACER	2		
19	20-0670A01	AXLE STUB BRACKET	2		
20	N/A Sep.	DECAL- DANGER/WARNING/CAUTION (SEE 34-9016)	1		
21	N/A	DECAL- DATA PLATE	1		
22	N/A Sep.	DECAL- WARNING: HOT SURFACE (SEE 34-9016)	1		
23	33-0264	WIRE CLIP	2		
24	N/A Sep.	DECAL- MAINTENANCE INSTRUCTIONS (SEE 34-9016)	1		
25	24-0082	REGULATOR PLUG	1		
26	22-0231	ADJUSTABLE REGULATOR	1		
27	24-0174	NIPPLE	1		
28	24-0010	NIPPLE	1		
29	24-0264	MANIFOLD	1		
30	22-0271	PRESSURE GAUGE	2		
31	22-0228	SAFETY VALVE	1		
32	28-1009	LOCKWASHER	3		
33	32-0756	CORD PLUG SET	1		
34	24-0082	PLUG	1		
35	32-0099	TERMINAL	3		
36	27-8933	SCREW	1		
37	32-0358	CORD STRAIN RELIEF	1		
38	32-0108	LOCKNUT	1		
39	22-0312	PRESSURE SWITCH	1		
40	9-0045	BUSHING	1		
41	854-0057	TUBE ASSEMBLY (INC. 42-43)	1		
42	23-0315	COMPRESSION NUT	2		
43	54-0034	TUBE *(TWO FEET REQUIRED)	1		
44	23-0328	ADAPTER	1		

Id	Item #	Description	Quantity	Rev	Comments
45	27-0068	BOLT	8		
46	28-0022	WASHER	16		
47	30-0157	LOCKNUT	8		
48	19-0083	AIR FILTER ASSEMBLY (INC. 37-39)	1		
49	19-0084	FRONT FILTER HOUSING	1		
50	19-0082	FILTER REPLACEMENT	1		
51	N/A Sep.	REAR FILTER HOUSING (SEE 19-0083)	1		
52	N/A Sep.	DECAL- CHECK OIL TAPE (SEE 34-9016)	1		
53	27-9524	BOLT	3		
54	10-0115	FLYWHEEL W/ COMPRESSOR	1		
55	11-0011	DRIVE BELT	1		
56	28-1032	FLATWASHER FLYWHEEL W/ COMPRESSOR	1		
57	N/A Sep.	DECAL- OPERATING INSTRUCTIONS (SEE 34-9016)	1		
58	33-0197	FASTENER	1		
59	854-0009	BELTGUARD ASSEMBLY (INC. 60-61)	1		
60	N/A Sep.	BELTGUARD COVER (SEE 854-0009)	1		
61	33-0020	EDGING *(FOUR FEET REQUIRED)	1		
62	27-0015	BOLT W/BUSHING	2		
63	9-0037	BUSHING	1		
64	10-0122	SHEAVE	1		
65	854-0007	BELTGUARD BACK ASSEMBLY (INC. 66-68)	1		
66	33-0020	EDGING *(TWO FEET REQUIRED)	1		
67	N/A Sep.	DECAL- WARNING: BELTGUARD IN PLACE (SEE 34-9016)	1		
68	N/A Sep.	BELTGUARD BACK (SEE 854-0007)	1		
69	43-0073	KEY	1		
70	2-0119	ENGINE- 2.0 HP	1		
71	N/A Sep.	DECAL- 115 VOLT (SEE 34-9016)	1		
72	27-0072	SCREW	2		
73	28-0003	WASHER	2		
74	20-0574A01	SUPPORT BRACKET	1		
75	33-0358	SPACER	2		
76	32-0445	CORD *(THREE FEET REQUIRED)	1		
77	32-0003	TERMINAL	6		
78	23-0426	ELBOW	1		
79	3-0215	PUMP	1		
80	15-0236	HOSE	1		
81	24-0042	ELBOW	1		
82	22-0334	CHECK VALVE	1		
	34-9016	SAFETY DECAL KIT (INC. 11, 20, 22, 24, 52, 57, 67, 71)	1		



AC1-PE02-20M / AC1-PE02-20M (sn:20035391-99999999)

PUMP



Id	Item #	Description	Quantity	Rev	Comments
1	27-0071	SCREW	2		
2	27-0069	SCREW	4		
3	46-1199	CYLINDER HEAD	1		
4	N/A Sep.	HEAD GASKET (SEE 70-0326)	1		
5	46-0952	VALVE PLATE ASSEMBLY (INC. 6-10)	2		
6	N/A Sep.	VALVE SCREW (SEE 70-0327)	8		
7	N/A Sep.	VALVE STOP (SEE 70-0327)	2		
8	N/A Sep.	OUTLET REED VALVE (SEE 70-0327)	2		
9	N/A	VALVE PLATE	1		
10	N/A Sep.	INLET REED VALVE (SEE 70-0327)	2		
11	N/A Sep.	CYLINDER VALVE PLATE GASKET (SEE 70-0326)	1		
12	27-0067	SCREW	5		
13	46-0953	CYLINDER	1		
14	N/A Sep.	CYLINDER TO CRANKCASE GASKET (SEE 70-0326)	1		

Id	Item #	Description	Quantity	Rev	Comments
15	46-1144	OIL FILL PLUG	1		
16	46-1194	CRANKCASE	1		
17	46-1145	OIL SIGHT GLASS	1		
18	24-0082	PLUG	1		
19	26-0292	GASKET	1		
20	27-8885	BOLT	4		
21	46-1195	COVER	1		
22	46-1196	ELBOW	1		
23	48-0016	BEAR BALL	2		
24	46-0955	CRANKSHAFT	1		
25	N/A Sep.	FLANGE GASKET (SEE 70-0326)	1		
26	46-0957	FLANGE	1		
27	27-0014	SCREW	4		
28	26-0246	SHAFT OIL SEAL	1		
29	10-0115	FLYWHEEL	1		
30	N/A Sep.	WASHER W/CRANKSHAFT (SEE 46-0955)	1		
31	46-0958	CONNECTING ROD	2		
32	70-0329	PISTON KIT (INC. 33-35)	2		
33	N/A Sep.	SNAP RING (SEE 70-0329)	4		
34	N/A Sep.	WRIST PIN (SEE 70-0329)	2		
35	N/A Sep.	PISTON (SEE 70-0329)	2		
36	70-0328	PISTON SEALS KIT (INC. 37-41)	2		
37	N/A Sep.	BOTTOM RAIL (SEE 70-0328)	2		
38	N/A Sep.	EXPANDER RING (SEE 70-0328)	2		
39	N/A Sep.	TOP RAIL (SEE 70-0328)	2		
40	N/A Sep.	SCRAPER PISTON RING (SEE 70-0328)	2		
41	N/A Sep.	TAPER FACE PISTON RING (SEE 70-0328)	2		
KIT	70-0326	GASKET KIT (INC. 4, 11, 14, 25)			
KIT	70-0327	VALVE PLATE KIT (INC. 6-8, 10)			
KIT	70-0328	PISTON SEALS KIT (INC. 37-41)			
KIT	70-0329	PISTON KIT (INC. 33-35)			