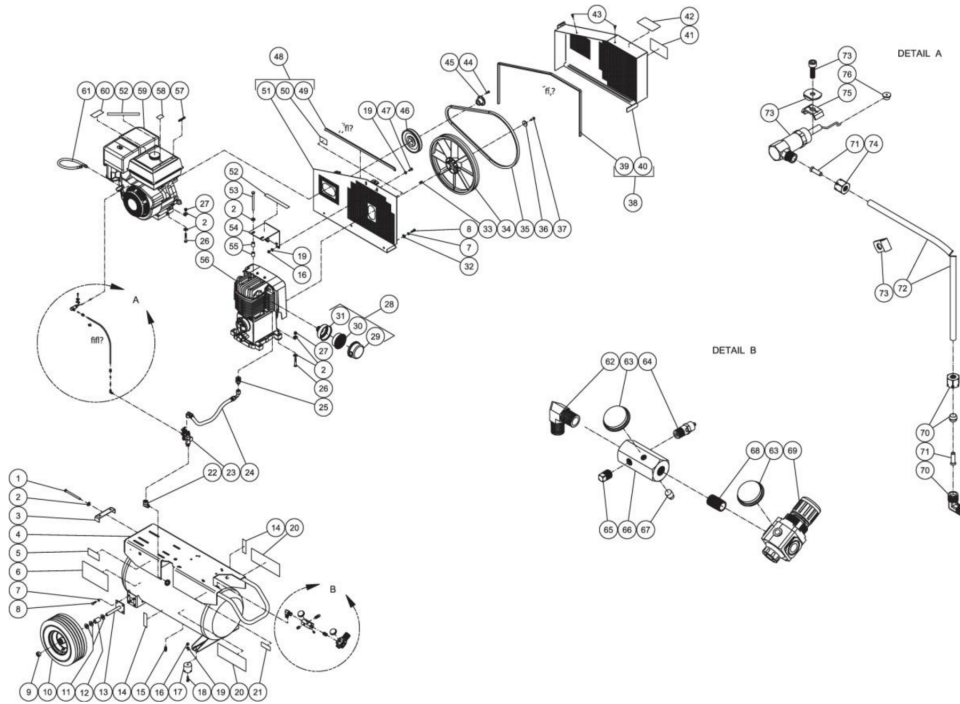




AC2-PH11-20M / AC2-PH11-20M (sn:20031739-99999999)

TANK ASSEMBLY



Id	Item #	Description	Quantity	Rev	Comments
1	27-0133	BOLT	1		
2	28-0023	FLATWASHER	19		
3	20-0650A01	BELT TENSIONER PLATE	1		
4	N/A	AIR TANK ASSEMBLY	1		
5	N/A	DECAL- DATA PLATE	1		
6	N/A Sep.	DECAL- DANGER/WARNING/CAUTION (SEE 34-9016)	1		
7	29-0007	LOCKWASHER	11		
8	27-0067	BOLT	11		
9	33-0351	COLLAR / SHAFT	2		
10	14-0006	WHEEL	2		
11	28-0008	WASHER	6		
12	62-0176	AXLE SPACER	2		
13	20-0670A01	AXLE STUB BRACKET	2		
14	N/A Sep.	DECAL- DRAIN TANK (SEE 34-9016)	2		
15	23-0312	PETCOCK	1		

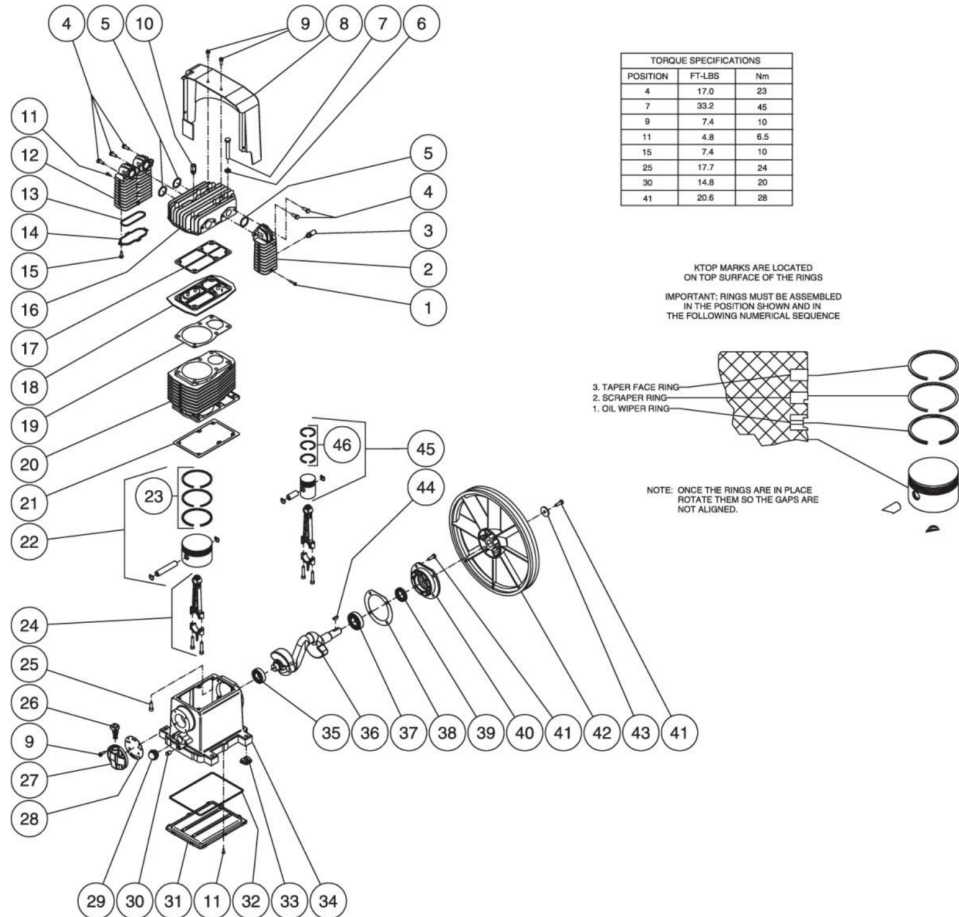
Id	Item #	Description	Quantity	Rev	Comments
16	30-0157	LOCKNUT	4		
17	14-0008	ISOLATOR	2		
18	27-0068	BOLT	2		
19	28-0003	WASHER	6		
20	34-0828	DECAL- MI-T-M COMPRESSOR	2		
21	N/A Sep.	DECAL- WARNING: RISK OF BURNS (SEE 34-9016)	1		
22	24-0041	ELBOW	1		
23	22-0270	PILOT VALVE	1		
24	15-0188	HOSE	1		
25	24-0160	ADAPTER	1		
26	27-0122	BOLT	8		
27	30-0159	LOCKNUT	8		
28	19-0219	AIR FILTER ASSEMBLY (INC. 28-30)	1		
29	N/A Sep.	FRONT AIR FILTER HOUSING (SEE 19-0219)	1		
30	19-0220	AIR FILTER ELEMENT	1		
31	N/A Sep.	REAR AIR FILTER HOUSING (SEE 19-0219)	1		
32	28-0022	WASHER	3		
33	43-0102	KEY	1		
34	10-0130	FLYWHEEL	1		
35	11-0066	DRIVE BELT	1		
36	28-1032	WASHER	1		
37	27-8033	BOLT	1		
38	854-0067	FRONT BELTGUARD ASSEMBLY (INC. 38-39)	1		
39	33-0020	EDGING *(FIVE FEET REQUIRED)	1		
40	N/A Sep.	FRONT BELTGUARD (SEE 854-0067)	1		
41	N/A Sep.	DECAL- MAINTENANCE INSTRUCTIONS (SEE 34-9016)	1		
42	N/A Sep.	DECAL- OPERATING INSTRUCTIONS (SEE 34-9016)	1		
43	33-0197	FASTENER	2		
44	27-0015	BOLT	2		
45	9-0005	BUSHING	1		
46	10-0128	SHEAVE	1		
47	27-0066	BOLT	2		
48	854-0066	BACK BELTGUARD ASSEMBLY (INC. 48-50)	1		
49	33-0020	EDGING *(THREE FEET REQUIRED)	1		
50	N/A Sep.	DECAL- WARNING: BELTGUARD IN PLACE (SEE 34-9016)	1		
51	N/A Sep.	BACK BELTGUARD (SEE 854-0024)	1		
52	N/A Sep.	DECAL- CHECK OIL (SEE 34-9016)	2		
53	27-8074	BOLT	2		
54	20-0816A01	SUPPORT BRACKET	1		

Id	Item #	Description	Quantity	Rev	Comments
55	33-0425	SPACER	4		
56	3-0222	COMPRESSOR PUMP	1		
57	43-0078	KEY	1		
58	N/A Sep.	DECAL- ENGINE FUEL (SEE 34-9016)	1		
59	1-0039	ENGINE- 11.0 HP HONDA	1		
60	N/A Sep.	DECAL- MUFFLER HOT (SEE 34-9016)	1		
61	70-0358	DRAINZIT DRAIN ASSEMBLY	1		
62	24-0267	ELBOW	1		
63	22-0271	PRESSURE GAUGE	2		
64	22-0267	PRESSURE RELIEF VALVE	1		
65	24-0009	PLUG	1		
66	24-0266	MANIFOLD	1		
67	24-0082	PLUG	1		
68	24-0175	NIPPLE	1		
69	22-0231	ADJUSTABLE REGULATOR	1		
70	23-0316	ELBOW	1		
71	23-0425	TUBE SUPPORT INSERT	2		
72	15-0238	TUBE *(TWO FEET REQUIRED)	1		
73	33-0413	THROTTLE CONTROL	1		
74	23-0315	COMPRESSION NUT	1		
75	45-0084	ENGINE THROTTLE CLIP	1		
76	62-0126	THROTTLE CONTROL ADAPTER	1		
	34-9016	SAFETY DECAL KIT (INC. 6, 13, 20, 40-41, 49, 51, 57, 59)			
		*MUST ORDER IN ONE FOOT LENGTHS			



AC2-PH11-20M / AC2-PH11-20M (sn:20031739-99999999)

SINGLE STAGE COMPRESSOR



Id	Item #	Description	Quantity	Rev	Comments
1	27-8807	BOLT	1		
2	46-1156	AFTER COOLER	1		
3	22-0385	SAFETY VALVE	1		
4	27-8032	BOLT	5		
5	25-0439	O-RING	3		
6	28-1021	WASHER	6		
7	27-8934	BOLT	6		
8	N/A	AIR SHROUD	1		
9	27-8002	BOLT	6		
10	22-0386	SAFETY VALVE	1		

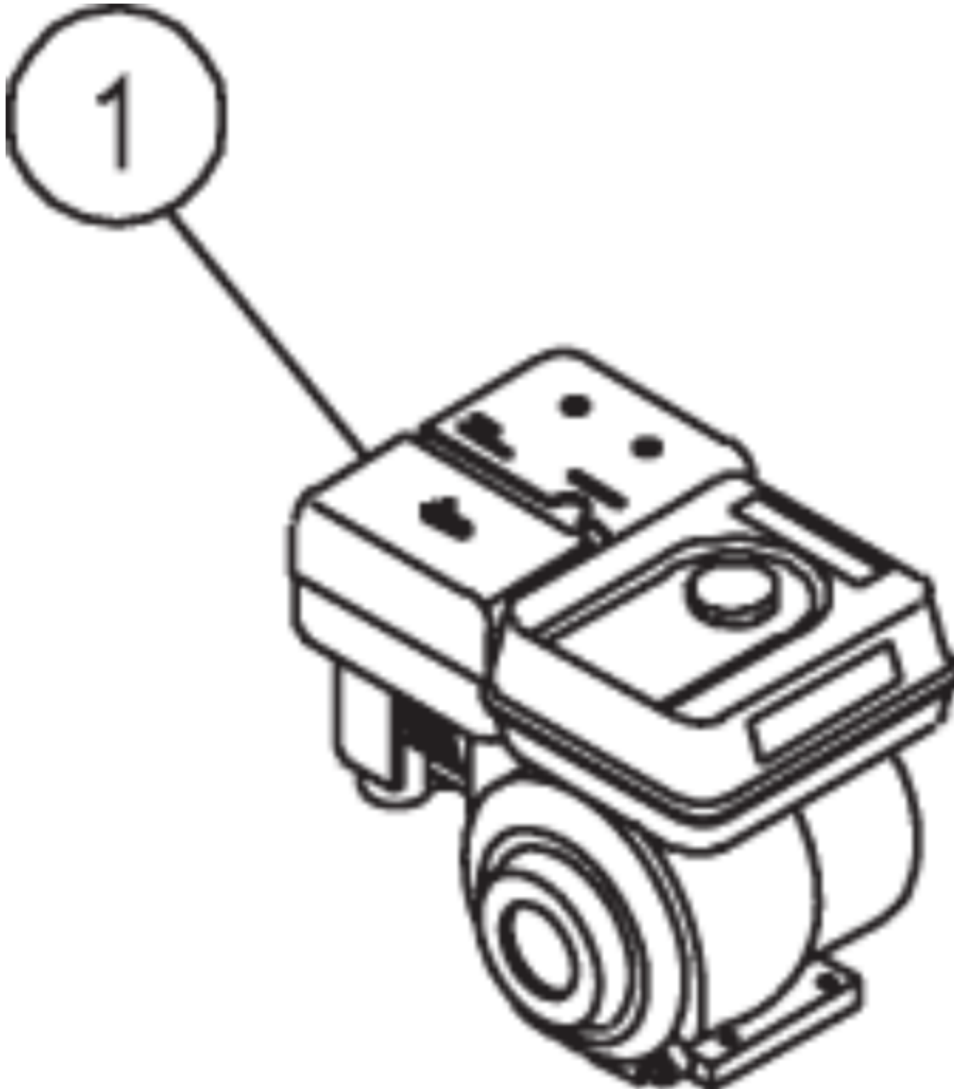
Id	Item #	Description	Quantity	Rev	Comments
11	27-9575	BOLT	11		
12	46-1157	INTER COOLER	1		
13	25-0440	O-RING	1		
14	46-0816	INTERCOOLER COVER	1		
15	27-8906	BOLT	4		
16	46-1158	PUMP HEAD	1		
17	N/A Sep.	HEAD GASKET (SEE 70-0345)	1		
18	22-0283	VALVE PLATE ASSEMBLY	1		
19	N/A Sep.	CYLINDER GASKET (SEE 70-0345)	1		
20	46-1176	CYLINDER	1		
21	N/A Sep.	CRANKCASE GASKET (SEE 70-0345)	1		
22	N/A	COMPLETE PISTON	1		
23	70-0344	RING SET KIT	1		
24	N/A	CONNECTING ROD	2		
25	27-8194	BOLT	6		
26	46-0818	CRANKCASE FILL HOLE PLUG W/O-RING	1		
27	46-0819	OIL FILL END CAP	1		
28	N/A Sep.	OIL FILL END CAP GASKET (SEE 70-0345)	1		
29	46-0820	OIL LEVEL SIGHT GLASS W/GASKET	1		
30	39-0106	OIL DRAIN PLUG	1		
31	N/A	OIL PAN	1		
32	N/A Sep.	OIL PAN O-RING (SEE 70-0345)	1		
33	46-0821	ISOLATOR	4		
34	N/A	CRANKCASE	1		
35	48-0060	BALL BEARING	1		
36	N/A	PISTON CRANKSHAFT	1		
37	48-0024	BALL BEARING	1		
38	N/A Sep.	FRONT END CAP GASKET (SEE 70-0345)	1		
39	26-0208	CRANKSAFT SEAL	1		
40	46-0822	FRONT END CAP	1		
41	27-8033	BOLT	5		
42	10-0130	FLYWHEEL	1		
43	28-1032	WASHER	1		
44	43-0102	KEY	1		
45	N/A	COMPLETE PISTON	1		
46	70-0239	RING SET KIT	1		
KIT	70-0345	GASKET KIT (INC. 5, 13, 17, 19, 21, 28, 32, 38)	1		

Id	Item #	Description	Quantity	Rev	Comments
8	N/A	DISCHARGE PORT FITTING	1		
9	N/A	SPRING SEAT ASSEMBLY-CHECK VALVE	1		
10	N/A Sep.	SPRING-CHECK VALVE (SEE 70-0241)	1		
11	N/A Sep.	PISTON-CHECK VALVE (SEE 70-0241)	1		
12	23-0419	MUFFLER	1		
13	N/A Sep.	STEM UNLOADER (SEE 70-0241)	1		
14	N/A Sep.	DIAPHRAM (SEE 70-0241)	1		
15	N/A Sep.	O-RING (SEE 70-0241)	1		
16	N/A Sep.	SCREEN (SEE 70-0241)	1		
17	N/A	SCREW W/WASHER	4		
18	N/A	PILOT BODY	1		
19	N/A Sep.	BALL (SEE 70-0241)	1		
20	N/A Sep.	O-RING (SEE 70-0241)	1		
21	N/A	DIFFERENTIAL ADJUSTING LOCKNUT	1		
22	N/A	DIFFERENTIAL ADJUSTING NUT	1		
23	N/A	PRESSURE ADJUSTING LOCKNUT	1		
24	N/A Sep.	PRESSURE ADJUSTING TOGGLE ASSEMBLY (SEE 70-0241)	1		
25	N/A	RED TOGGLE COVER	1		
KIT	70-0241	REPAIR KIT (INC. 2 EACH 3, 4-5, 10-11, 13-16, 19-20, 24			



AC2-PH11-20M / AC2-PH11-20M (sn:20031739-99999999)

AX-OPTIONS BATTERY



Id	Item #	Description	Quantity	Rev	Comments
1	1-0039	ENGINE- HONDA 11HP	1		