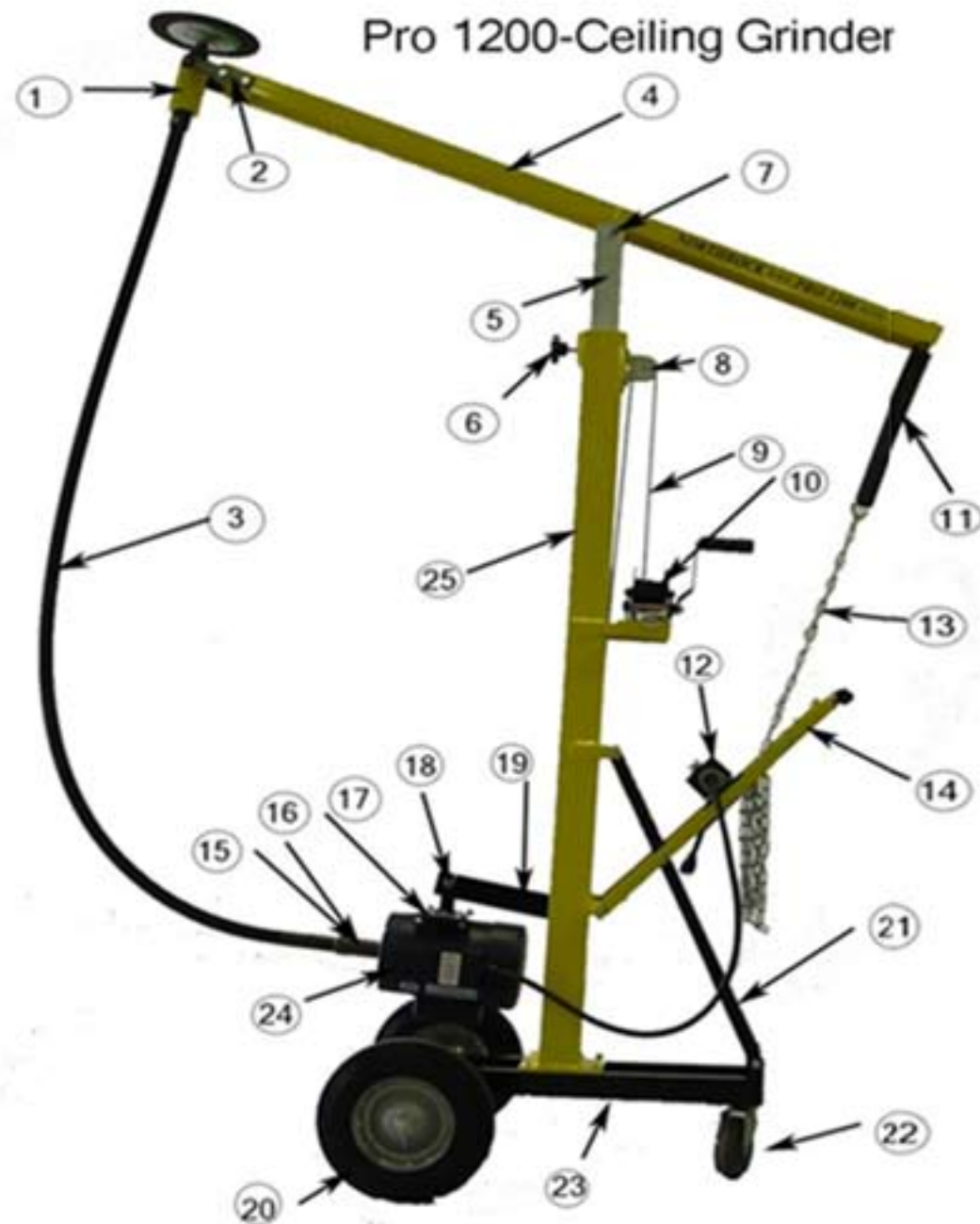


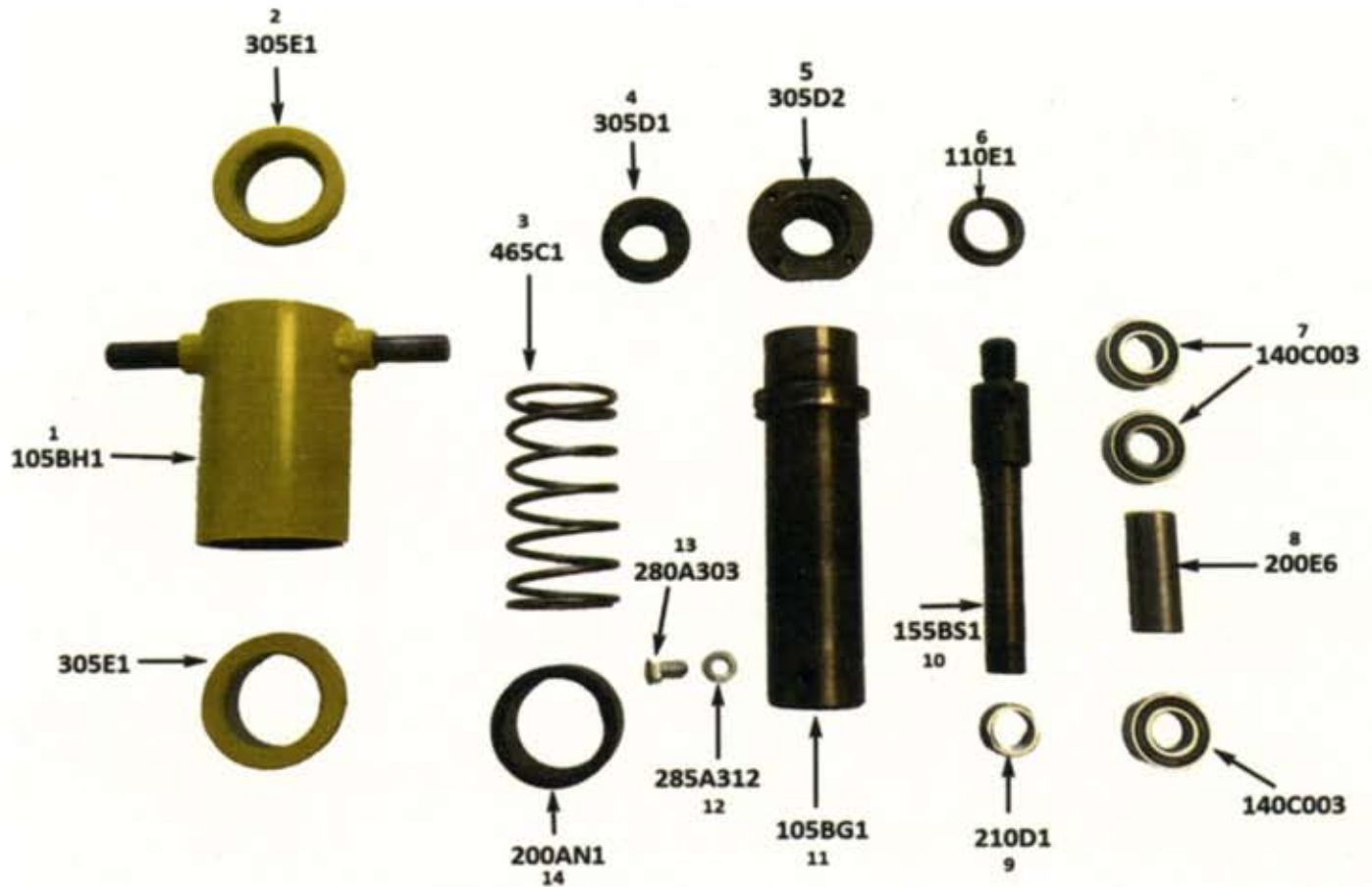
PRO 1200 PARTS LIST

ITEM #	PART NUMBER	DESCRIPTION
1	25AM1	GRINDING HEAD ASSEMBLY
2	215AX2	PLATE W/ GROMMET
2A	130B1	GROMMET
3	30AK7	7' FLEXIBLE SHAFT
3A	250T7	7' INNER CORE
3B	275Y7	7' OUTER CASING
4	440J2	CROSS BEAM
5	440K1	MAST
6	365B1	LOCKING KNOB
7	180C1	HINGE PIN
8	590C1	PULLEY
9	315B2	CABLE ASSEMBLY
10	595A1	WINCH
11	465B1	SPRING
12	425D1	SWITCH (ELECTRIC TYPE ONLY)
13	315C2	CHAIN
14	165D1	HANDLE
15	160ED2	CORE ADP. (ELEC. TYPE)
15	160EE2	CORE ADP. (GAS TYPE)
16	150HK2	CASING ADP. (ELEC. TYPE)
16	150HR1	CASING ADP. (GAS TYPE)
17	440M1	MOTOR PLATE (ELEC. TYPE)
17	440W1	MOTOR PLATE (GAS TYPE)
18	180D1	HINGE PIN
19	440L1	MOTOR HANGER (ELEC. TYPE)
19	440X1	MOTOR HANGER (GAS TYPE)
20	590A1	TIRE
21	195G1	SUPPORT TUBE
22	590B1	SWIVEL CASTER
23	440F1	BASE FRAME
24	555B1	ELECTRIC MOTOR 1 1/2 HP
24A	555C1	GAS ENGINE 4 HP
25	440H1	MAIN FRAME



NORTHROCK CEILING GRINDER HEAD

PARTS BREAKDOWN



ITEM #	P/N	DESCRIPTION
1	105BH1	OUTER HOUSING
2	305E1	CAP
3	465C1	COMPRESSION SPRING
4	305D1	CAP
5	305D2	FLANGED CAP
6	110E1	SEAL
7	140C003	BALL BEARING
8	200E6	SPACER
9	210D1	LOCKNUT
10	155CS1	SPINDLE GRINDER
11	105BG1	INNER HOUSING
12	285A312	WASHER
13	380A303	SPECIAL BOLT
14	200AN1	SPACER