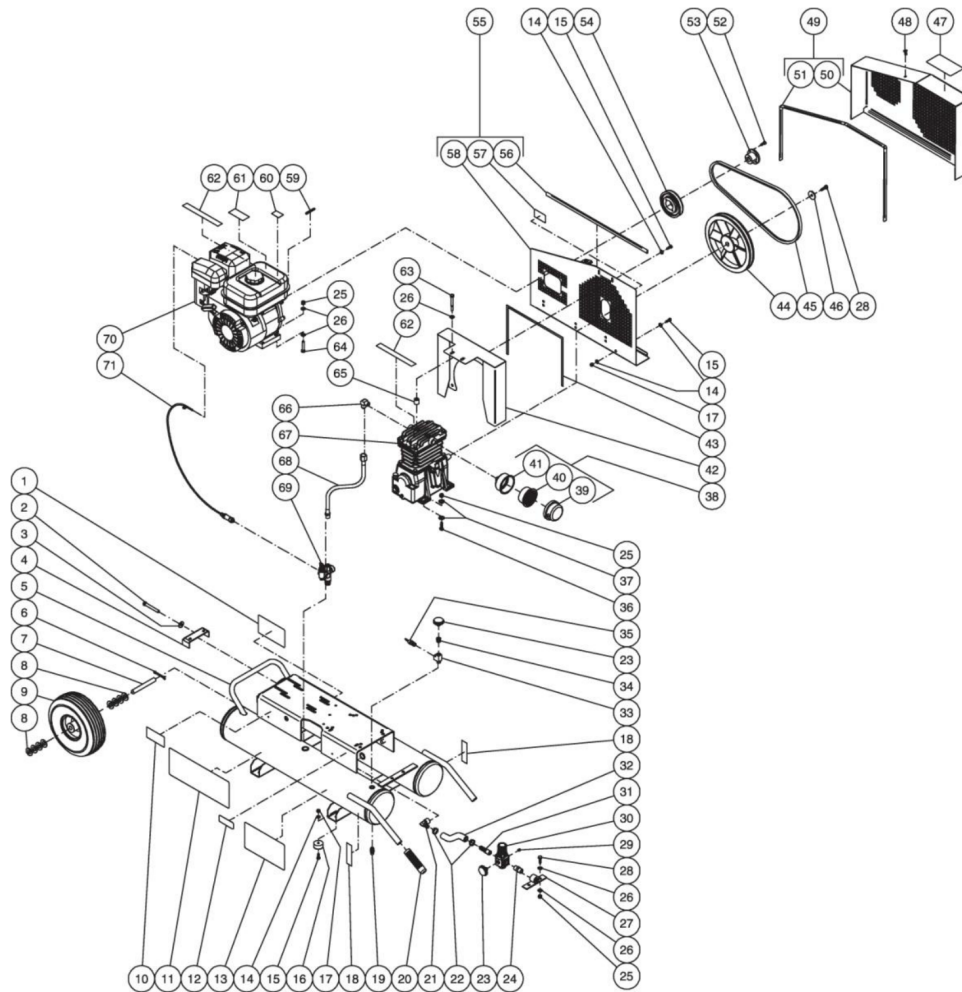




AC1-PR06-08M / AC1-PR06-08M (sn:20035391-99999999)

TANK ASSEMBLY



Id	Item #	Description	Quantity
1	N/A Sep.	DECAL- MAINTENANCE INSTRUCTIONS (SEE 34-9016)	1
2	27-0576	BOLT	1
3	28-0023	FLATWASHER	1
4	20-0614A01	BELT TENSION BRACKET	1
5	854-0027	AIR TANK ASSEMBLY (INC. 12, 13, 18)	1
6	43-0092	COTTER PIN	2
7	20-0420	AXLE	1
8	28-0008	WASHER	8
9	14-0017	WHEEL	1

Id	Item #	Description	Quantity
10	N/A	DECAL- DATA PLATE	1
11	34-0814	DECAL- LOGO	1
12	N/A Sep.	DECAL- WARNING: RISK OF BURNS (SEE 34-9016)	1
13	N/A Sep.	DECAL- DANGER/WARNING/CAUTION (SEE 34-9016)	1
14	28-0002	WASHER	14
15	27-0015	SCREW	13
16	14-0069	ISOLATOR	4
17	30-0155	LOCKNUT	7
18	N/A Sep.	DECAL- TANK DRAIN (SEE 34-9016)	2
19	23-0312	PETCOCK	2
20	7-0143	HANDLE GRIP	2
21	23-0418	ELBOW	1
22	42-0011	HOSE CLAMP	2
23	22-0257	PRESSURE GAUGE	2
24	24-0010	NIPPLE	1
25	30-0157	LOCKNUT	10
26	28-0003	WASHER	14
27	20-0421A01	REGULATOR MOUNTING BRACKET	1
28	27-0067	BOLT	3
29	24-0082	REGULATOR PLUG	1
30	22-0231	ADJUSTABLE REGUALATOR	1
31	23-0105	HOSE BARB	1
32	15-0007	HOSE *(ONE FOOT REQUIRED)	1
33	23-0127	TEE	1
34	23-0111	ADAPTER	1
35	22-0228	SAFETY RELIEF VALVE	1
36	27-0068	BOLT	4
37	28-0022	WASHER	8
38	19-0083	AIR FILTER ASSEMBLY (INC. 39-41)	1
39	19-0084	FRONT FILTER HOUSING	1
40	19-0082	REPLACEMENT FILTER	1
41	N/A Sep.	REAR FILTER HOUSING (SEE 19-0083)	1
42	20-0612A01	AIR SHROUD	1
43	26-0240	GASKET *(ONE FOOT REQUIRED)	1
44	10-0115	FLYWHEEL W/COMPRESSOR	1
45	11-0011	DRIVE BELT	1
46	28-1032	FLATWASHER	1
47	N/A Sep.	DECAL- OPERATING INSTRUCTIONS (SEE 34-9016)	1
48	33-0197	FASTENER	1

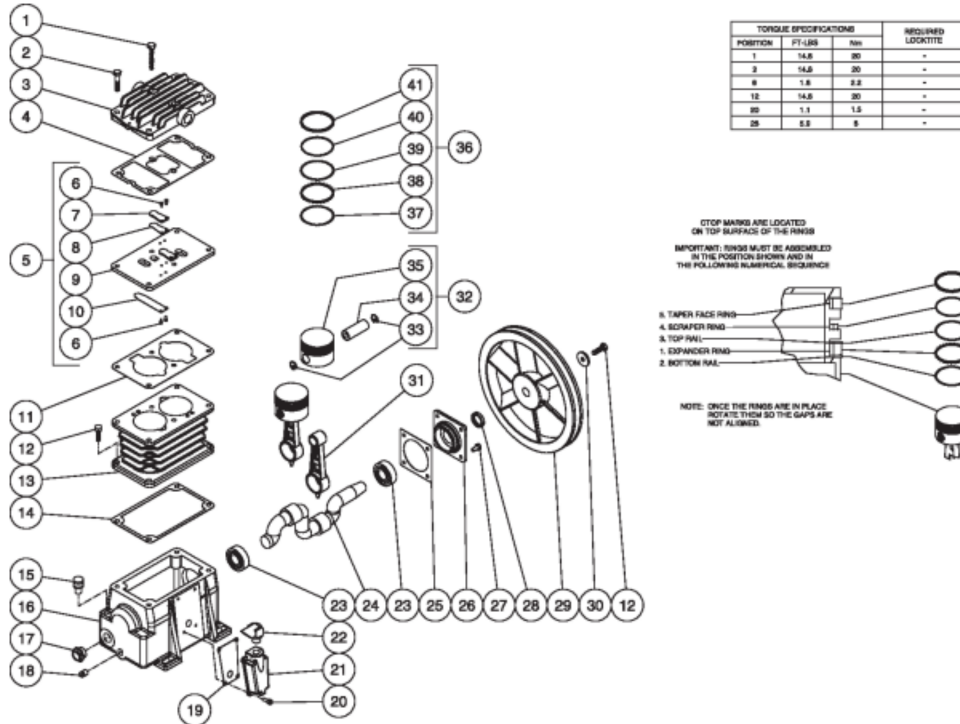
Id	Item #	Description	Quantity
49	854-0009	BELTGUARD ASSEMBLY (INCLUDES 50-51)	1
50	N/A Sep.	BELTGUARD COVER (SEE 854-0009)	1
51	33-0020	EDGING *(FOUR FEET REQUIRED)	1
52	27-0015	BOLT	2
53	9-0009	BUSHING	1
54	10-0101	DRIVE PULLEY	1
55	854-0007	BELTGUARD BACK ASSEMBLY (INCLUDES 56-58)	1
56	33-0020	EDGING *(TWO FEET REQUIRED)	1
57	N/A Sep.	DECAL- WARNING: BELTGUARD IN PLACE (SEE 34-9016)	1
58	N/A Sep.	BELTGUARD BACK (SEE 854-0007)	1
59	43-0073	KEY	1
60	N/A Sep.	DECAL- WARNING: HOT SURFACE (SEE 34-9016)	1
61	N/A Sep.	DECAL- CAUTION: ALLOW TO COOL (SEE 34-9016)	1
62	N/A Sep.	DECAL- CHECK OIL TAPE (SEE 34-9016)	2
63	27-0074	BOLT	2
64	27-0070	BOLT	4
65	33-0358	SPACER	2
66	15-0426	ELBOW	1
67	3-0215	PUMP	1
68	15-0235	HOSE	1
69	22-0346	PILOT VALVE	1
70	1-0132	ENGINE- 6.0HP SUBARU	1
71	33-0401	THROTTLE CONTROL	1
	34-9016	SAFETY DECAL KIT (INC. 1, 12, 13, 18, 47, 57, 60-62)	

*MUST ORDER IN ONE FOOT LENGTHS



AC1-PR06-08M / AC1-PR06-08M (sn:20035391-99999999)

SINGLE STAGE COMPRESSOR



Id	Item #	Description	Quantity
1	27-0071	SCREW	2
2	27-0069	SCREW	4
3	46-1199	CYLINDER HEAD	1
4	N/A Sep.	HEAD GASKET (SEE 70-0326)	1
5	46-0952	VALVE PLATE ASSEMBLY (INC. 6-10)	2
6	N/A Sep.	VALVE SCREW (SEE 70-0327)	8
7	N/A Sep.	VALVE STOP (SEE 70-0327)	2
8	N/A Sep.	OUTLET REED VALVE (SEE 70-0327)	2
9	N/A	VALVE PLATE	1
10	N/A Sep.	INLET REED VALVE (SEE 70-0327)	2
11	N/A Sep.	CYLINDER VALVE PLATE GASKET (SEE 70-0326)	1
12	27-0067	SCREW	5
13	46-0953	CYLINDER	1
14	N/A Sep.	CYLINDER TO CRANKCASE GASKET (SEE 70-0326)	1

Id	Item #	Description	Quantity
15	46-1144	OIL FILL PLUG	1
16	46-1194	CRANKCASE	1
17	46-1145	OIL SIGHT GLASS	1
18	24-0082	PLUG	1
19	26-0292	GASKET	1
20	27-8885	BOLT	4
21	46-1195	COVER	1
22	46-1196	ELBOW	1
23	48-0016	BEAR BALL	2
24	46-0955	CRANKSHAFT	1
25	N/A Sep.	FLANGE GASKET (SEE 70-0326)	1
26	46-0957	FLANGE	1
27	27-0014	SCREW	4
28	26-0246	SHAFT OIL SEAL	1
29	10-0115	FLYWHEEL	1
30	N/A Sep.	WASHER W/CRANKSHAFT (SEE 46-0955)	1
31	46-0958	CONNECTING ROD	2
32	70-0329	PISTON KIT (INC. 33-35)	2
33	N/A Sep.	SNAP RING (SEE 70-0329)	4
34	N/A Sep.	WRIST PIN (SEE 70-0329)	2
35	N/A Sep.	PISTON (SEE 70-0329)	2
36	70-0328	PISTON SEALS KIT (INC. 37-41)	2
37	N/A Sep.	BOTTOM RAIL (SEE 70-0328)	2
38	N/A Sep.	EXPANDER RING (SEE 70-0328)	2
39	N/A Sep.	TOP RAIL (SEE 70-0328)	2
40	N/A Sep.	SCRAPER PISTON RING (SEE 70-0328)	2
41	N/A Sep.	TAPER FACE PISTON RING (SEE 70-0328)	2
KIT	70-0326	GASKET KIT (INC. 4, 11, 14, 25)	
KIT	70-0327	VALVE PLATE KIT (INC. 6-8, 10)	
KIT	70-0328	PISTON SEALS KIT (INC. 37-41)	
KIT	70-0329	PISTON KIT (INC. 33-35)	