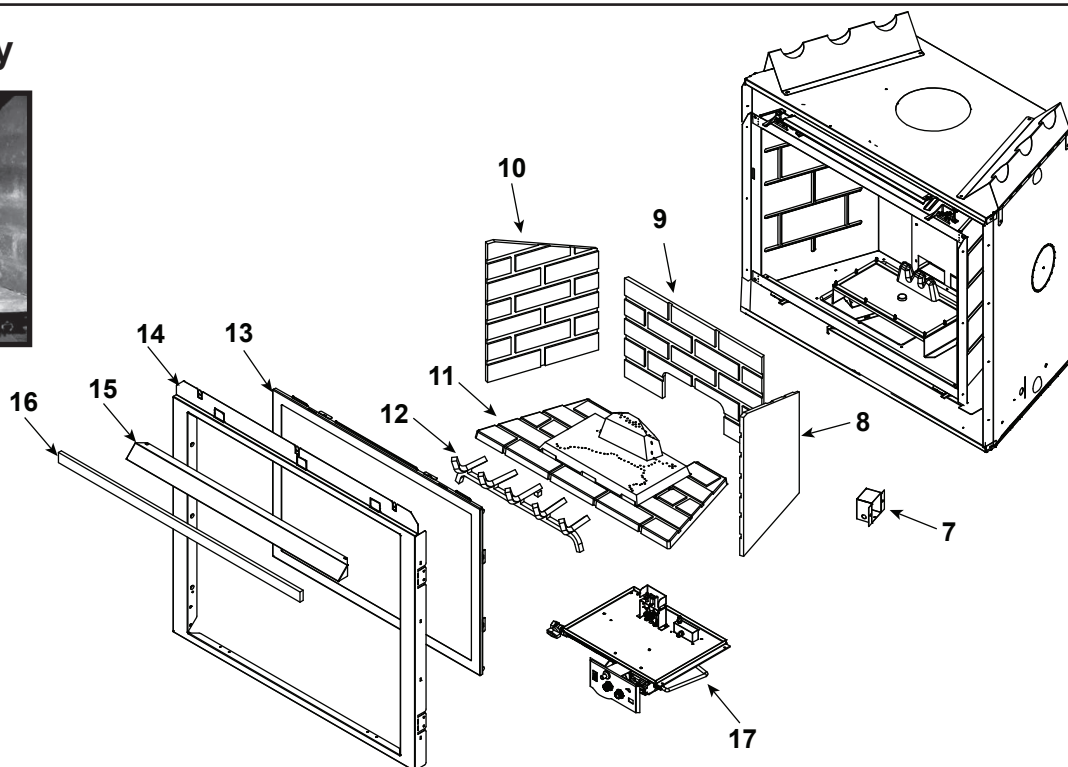


### Log Set Assembly



IMPORTANT: THIS IS DATED INFORMATION. Parts must be ordered from a dealer or distributor.

**Hearth and Home Technologies does not sell directly to consumers.** Provide model number and serial number when requesting service parts from your dealer or distributor.

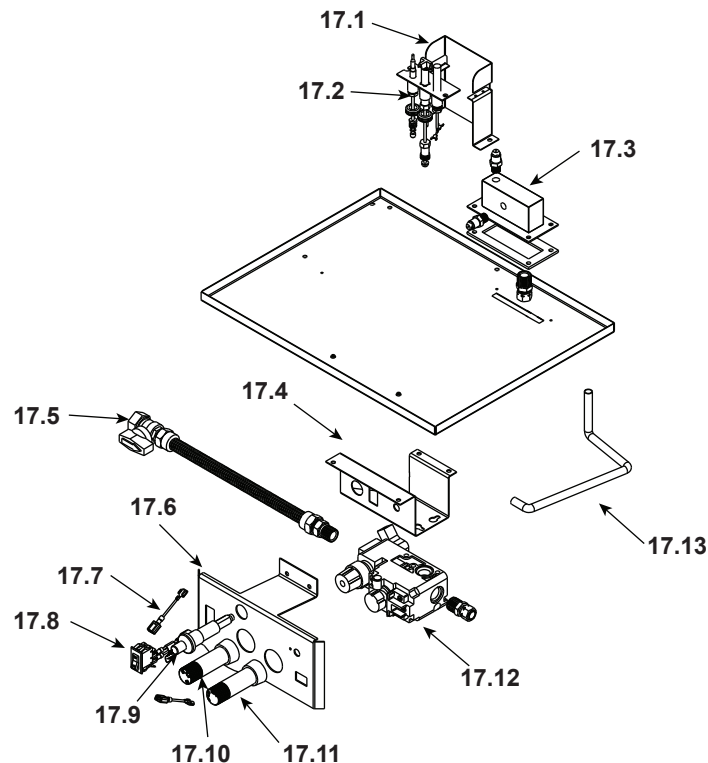


**Stocked  
at Depot**

ITEM	DESCRIPTION	COMMENTS	PART NUMBER	
	Log Set Assembly	6 Logs	LOGS-6TRIB	Y
1	Log 1	<b>No longer available, Must order complete assembly</b>	SRV385-735	
2	Log 2		SRV385-738	
3	Log 3		SRV385-739	
4	Log 4		SRV385-737	
5	Log 5		SRV385-736	
6	Log 6		SRV385-740	
7	Junction Box		100-250A	Y
	Wall Refractory Kit		BRICK-6000-FB	
8	Right Wall		SRV2027-372	
9	Back Wall		SRV2027-370	
10	Left Wall		SRV2027-371	
11	Burner NG, LP		385-339A	
12	Grate Assembly		385-360A	
13	Glass Door Assembly		GLA-6TROC	Y
14	Surround	<b>No longer available</b>	385-130	
15	Hood		SRV60-143-BK	
16	Non-comb board		385-401	

Additional service part numbers appear on following page.

### #17 Valve Assembly



IMPORTANT: THIS IS DATED INFORMATION. Parts must be ordered from a dealer or distributor. **Hearth and Home Technologies does not sell directly to consumers.** Provide model number and serial number when requesting service parts from your dealer or distributor.



**Stocked  
at Depot**

ITEM	DESCRIPTION	COMMENTS	PART NUMBER	
17.1	Pilot Bracket		385-164	
17.2	Pilot Assembly NG		4021-736	Y
	Pilot Assembly LP		4021-737	Y
	Pilot Tube		SRV485-301	Y
	Thermocouple		446-511	Y
	Thermopile		2103-512	Y
17.3	Manifold Assembly		2102-007	Y
17.4	Valve Bracket		2025-101	
17.5	Flex Ball Valve Assembly		SRV302-320	Y
17.6	Control Panel	No longer available	385-154	
17.7	Wire Assembly		049-552A	Y
17.8	ON/Off Rocker Switch		060-521A	Y
17.9	Piezo Ignitor		291-513	Y
17.10	Pilot Control Knob	No longer available	571-530	
17.11	Flame control Knob	No longer available	571-531	
17.12	Valve NG		060-522	Y
	Valve LP		060-523	Y
17.13	Flexible Gas Connector		477-301A	Y

Additional service part numbers appear on following page.

## No one builds a better fire

**Beginning Manufacturing Date: June 2001**

**Ending Manufacturing Date: July 2003**

**IMPORTANT: THIS IS DATED INFORMATION.** Parts must be ordered from a dealer or distributor.

**Hearth and Home Technologies does not sell directly to consumers.** Provide model number and serial number when requesting service parts from your dealer or distributor.



## Stocked at Depot

[illegible]