



HYDRACART INSTRUCTIONS

REIMANN & GEORGER CORPORATION
CONSTRUCTION PRODUCTS
P/N 6122071

BUFFALO, NY
05/06/14

5 PARTS LIST

The following parts list applies to the HydraCart only. The parts list for the hydraulic power source is in the separate manual supplied for this item. Each item number on the following parts list can be matched with the item number shown on the assembly drawing.

Item Number	Part Number	Quantity	Description
1	6400654	1	CRANK GRIP 7/8"
2	5806296	1	HEX HEAD CAP SCREW 1/2-13 x 6
3	2004835	1	CRANK GRIP TUBE
4	2000506	1	CRANK
5	5806416	5	FLAT WASHER 3/4" USS
7	5806368	6	TOPLOCK HEX NUT 3/8-16
8	5806406	5	FLAT WASHER 3/8" SAE
9	2004837	1	DEPTH INDICATOR ASSY
10	5806370	3	TOPLOCK HEX NUT 1/2-13
12	5800130	2	SPRING
13	2000503	1	DEPTH ROD
14	5806251	1	HEX HEAD CAP SCREW 3/8-16 X 2
15	5806248	1	HEX HEAD CAP SCREW 3/8-16 X 1-1/4
16	5806410	9	FLAT WASHER 1/2" USS
17	5800136	1	COMPRESSION SPRING
19	2004834	2	CRANK BEARING NUT
20	5104576	1	BEARING
21	2000505	1	LOCK HANDLE
22	2000502	1	UNDERCARRIAGE
23	2000501	1	MAIN FRAME
24	2004828	1	TRIGGER CLAMP
25	2004816	1	WIRE ROPE ASSY
27	5800113	1	HEX HEAD CAP SCREW 1/2-13 X 5 FULL THREAD
28	2004830	1	SCREW LOCK HANDLE
29	5806379	5	HEX NUT 1/2-13
30	2004832	1	FORWARD LOCK HANDLE BOLT-S14, S20, S24 SAW
31	5806387	2	HEX JAM NUT 1/2-13
32	2000479	1	FULL GUIDE ARM ASSEMBLY
33	2004838	1	PLUMB CUT ADJUSTMENT STUD
34	2004831	1	LOCK ARM ASSEMBLY
35	5806372	4	TOPLOCK HEX NUT 3/4-10 GRADE 5
36	7648310	2	FRONT WHEEL 4"
37	7648311	2	REAR WHEEL 8"
38	2000507	1	REAR AXLE
39	6204062	1	CONTROL PANEL DECAL
40	6400143	3	HANDLE GRIP 1"
41	2000504	1	HANDLE BAR
42	5806247	4	HEX HEAD CAP SCREW 3/8-16 X 1
43	2000478	1	BALLAST BOX
44	2004841	1	FORWARD LOCK HANDLE BOLT-S16 (ONLY)

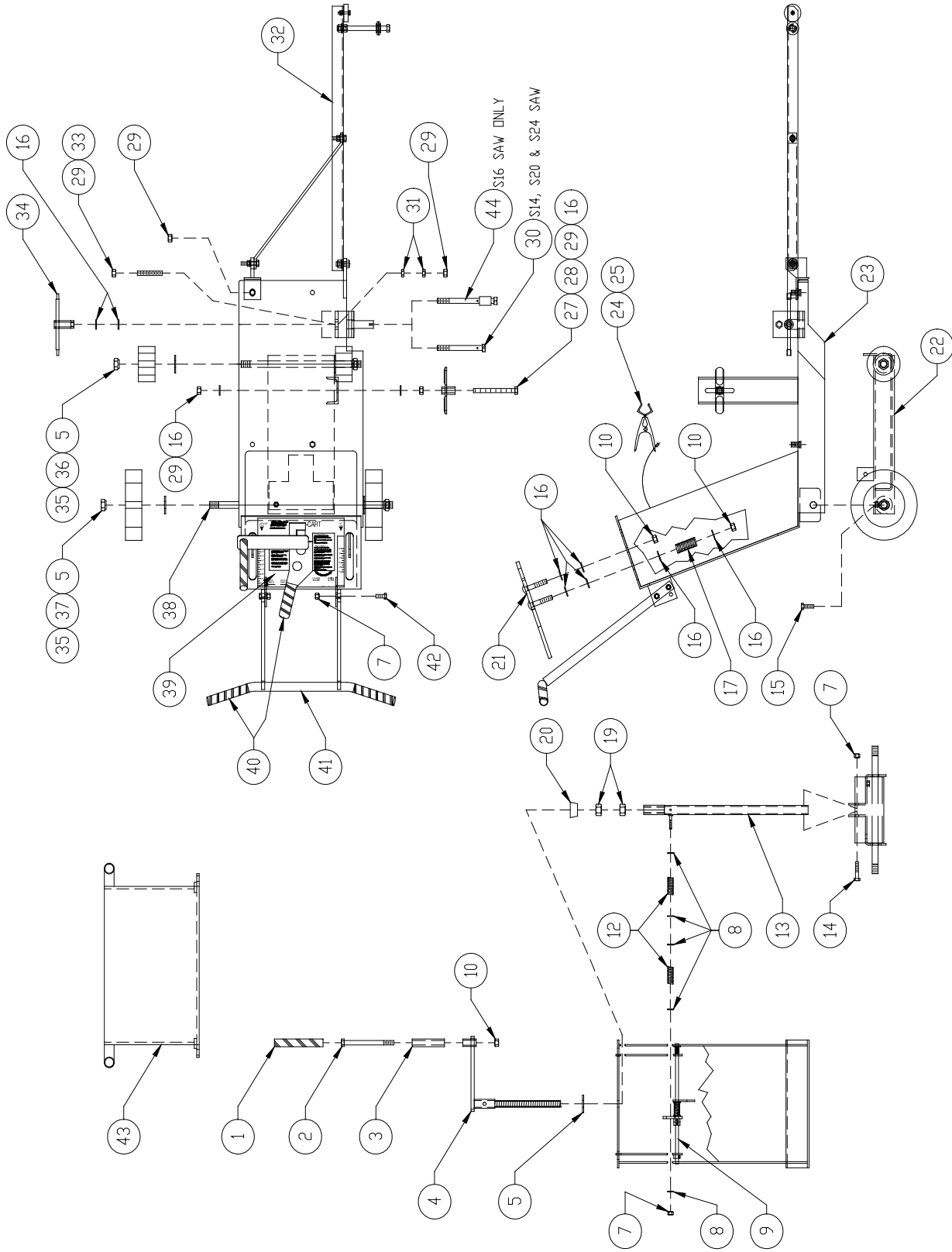


Figure 5-1.
Hydra Cart Assembly