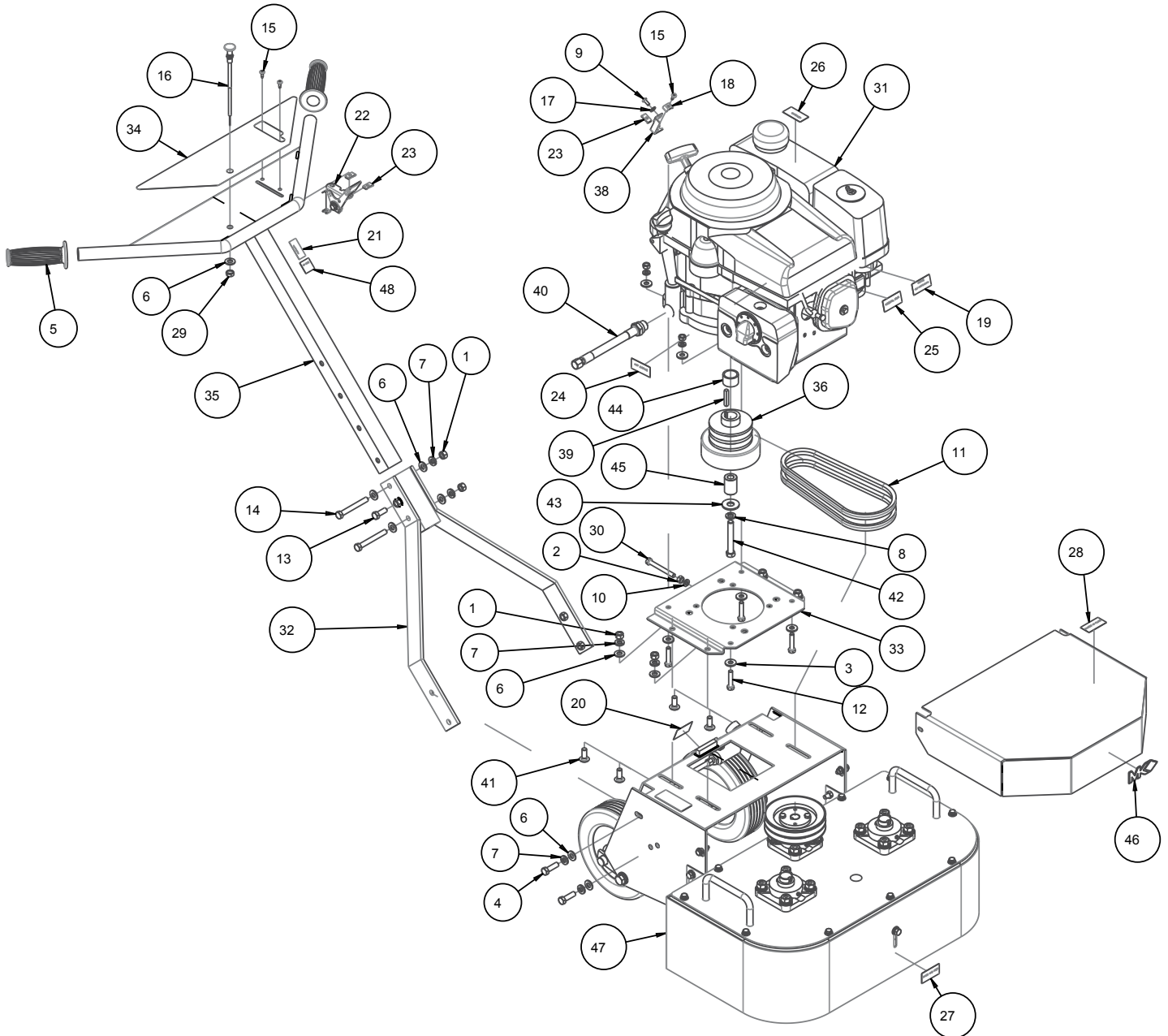


MK-DDG-11, DOUBLE DISK GRNDER, HONDA GXV340 P/N 157012

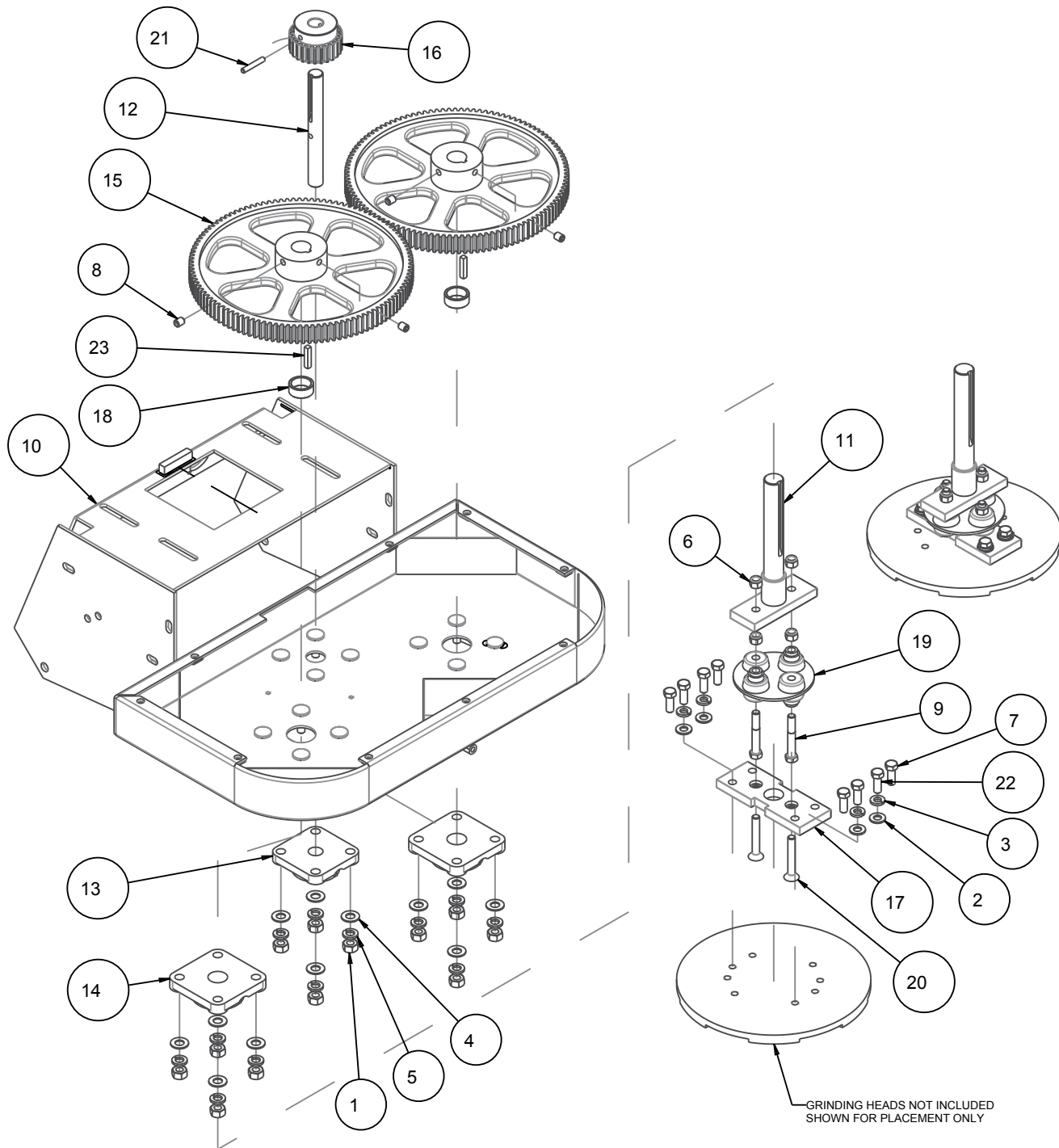


Item	Description	Part #	Qty
1	NUT, HEX, 3/8 -16	101188	6
2	NUT, HEX, 5/16-18	101196	3
3	WASHER, 5/16 FLAT CUT	101352	6
4	SCREW, 3/8-16 X 1-1/4 HEX HEAD CAP	150774	4
5	GRIP, HANDLE, 1.0 ID	150842	2
6	WASHER, FLAT, SAE, 3/8	150923	13
7	WASHER, LOCK, SPLIT, 3/8	150925	10
8	WASHER, 7/16 SPLIT, LOCK	151051	1

MK-DDG-11, DOUBLE DISK GRNDER, HONDA GXV340 P/N 157012

Item	Description	Part #	Qty
9	SCREW, PAN HD, #10-32X1/2	151052	1
10	WASHER, LOCK, SPLIT, 5/16	151747	3
11	BELT, AX25	152403	2
12	SCREW, 5/16-18 X 1-1/2 HEX HEAD MACHINE	152467	4
13	SCREW, HEX HD CAP, 3/8-16 X 1	152507	1
14	SCREW, 3/8-16 X 3 HEX HEAD CAP	153113	2
15	SCREW, PHILP SELF TAP 10-24 X 5/8"	153681	3
16	CABLE, 48" CHOKE (RAW)	154210	1
17	WASHER, FLAT, SAE, #10	154369	1
18	CLAMP, CABLE	154383	1
19	LABEL, NOTICE, OVERTENSION	154399	1
20	LABEL, WATER SHUT OFF/ON	154404	1
21	LABEL, INFORMATION ON SERVICE	155038	1
22	ASSY, THROTTLE CONTROL	155406	1
23	NUT, 10-24 CLIP	155407	3
24	LABEL, CAUTION, HOT SURFACE	155578	1
25	LABEL, CAUTION, DISCONNECT SPRKPLG	155579	1
26	LABEL, WARNING, REFUELING	155580	1
27	LABEL, CAUTION, HANDS AND FEET	155585	1
28	LABEL, CAUTION, GUARDS IN PLACE	155587	1
29	NUT, HEX, JAM, 3/8-24	156623	1
30	BOLT, 5/16-18 X 2-3/4 HEX HEAD TAP	156974	1
31	ENGINE, HONDA GXV340	157067	1
32	ADJUSTMENT, HANDLEBAR, DDG	157070	1
33	MOUNT, ENGINE	157071	1
34	LABEL, CONSOLE, DDG-11	157075	1
35	HANDLEBAR, TOP WELDMENT, GRINDER	157260	1
36	CLUTCH, 2 GROOVE 3-1/2 X 1	157309	1
37	OWNER'S MANUAL MK-DDG-11 GRINDER	157499	1
38	CLIP, CHOKE CABLE	157504	1
39	KEY, 1/4 SQUARE X 1-1/2	157560	1
40	HOSE, OIL DRAIN, M20	157577-04	1
41	BOLT, CARR, 3/8-16 X 1	157644	4
42	SCREW, HEX HD, 7/16-20X3	157678	1
43	WASHER, FLAT, USS, 1/2	157679	1
44	SPACER, 1.25 OD X 1.0 ID X 0.8	157680	1
45	SPACER, 1 13/32	157681	1
46	LOGO, MK ADHESIVE	157914	1
47	ASSY, LOWER FRAME, DDG	167541	1
48	LABEL, QR CODE	170480	1

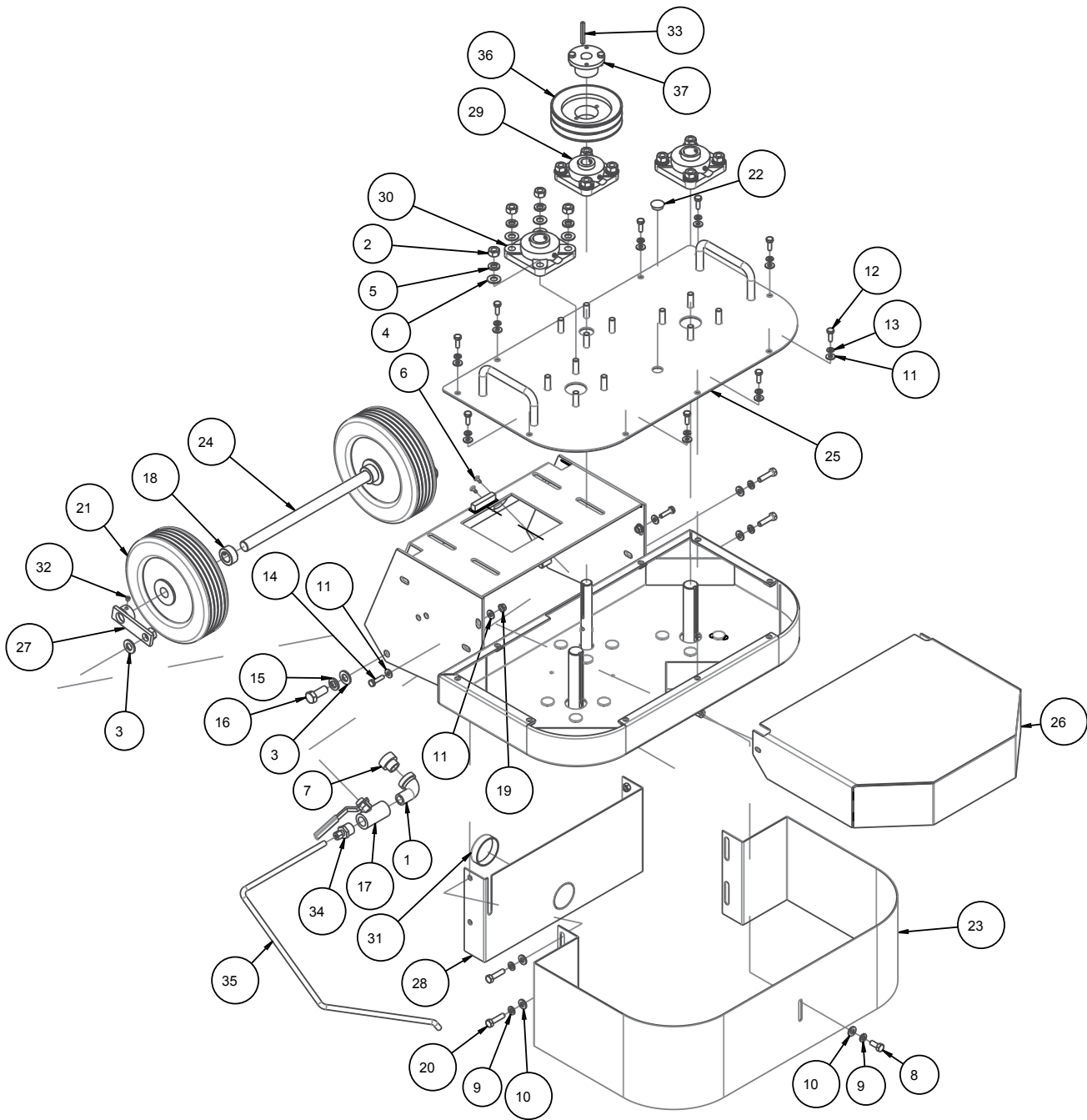
MK-DDG FLOOR GRINDER ASSY, LOWER FRAME, DDG P/N 167541



MK-DDG FLOOR GRINDER ASSY, LOWER FRAME, DDG P/N 167541

Item	Description	Part #	Qty
1	NUT, HEX, 7/16-14	150922	12
2	WASHER, FLAT, SAE, 3/8	150923	8
3	WASHER, LOCK, SPLIT, 3/8	150925	8
4	WASHER, FLAT 7/16 SAE	151050	12
5	WASHER, 7/16 SPLIT LOCK	151051	12
6	NUT, HEX, NYLK, 3/8-16	152505	8
7	SCREW, HEX HD CAP, 3/8-16 X 1	152507	8
8	SCREW, SET, SOC, CPT, 3/8-16 X 1/2	153710	4
9	SCREW, 3/8-16 X 2-1/2 HEX HEAD CAP	156030	4
10	FRAME, MAIN WELDMENT	157068	1
11	SHAFT, 1" DIA. LARGE GEAR	157302	2
12	SHAFT, SMALL GEAR	157303	1
13	FLANGE UNIT, 3/4" DIA 4 BOLT	157304	1
14	FLANGE UNIT, 1" DIA. 4 BOLT	157305	2
15	GEAR, 11 1/2" DIA. SPUR-COMP	157306	2
16	GEAR, 2 1/2" DIA. SPUR-COMP	157307	1
17	MOUNT, GRD. WHEEL	157407	2
18	BUSHING, 1/2 SPACER	157410	2
19	COUPLING, FLEXIBLE	157411	2
20	SCREW, FLAT HD SOC 3/8-16 X 2-1/2	157562	4
21	PIN, ROLLED, 1/4 X 1-1/2"	157565	1
22	SCREW, HEX HD, 3/8-24 X 1	157803	8
23	KEY, 1/4 X 1/4 X 1-1/4 SQUARE	159852	2

MK-DDG FLOOR GRINDER ASSY, LOWER FRAME, DDG P/N 167541



MK-DDG FLOOR GRINDER ASSY, LOWER FRAME, DDG P/N 167541

Item	Description	Part #	Qty
1	ELBOW, 1/2 MNPT 90 STREET, GALV	150844	1
2	NUT, HEX, 7/16-14	150922	12
3	WASHER, 1/2 SAE FLAT	150924	4
4	WASHER, FLAT 7/16 SAE	151050	12
5	WASHER, 7/16 SPLIT LOCK	151051	12
6	SCREW, PAN HD SELF TP10-24X3/8	151262	2
7	FITTING, 1/2 MNPT X 3/4 FNH	151322	1
8	SCREW, HEX HD, CAP, 5/16-18 X 3/4	151369	1
9	WASHER, LOCK, SPLIT, 5/16	151747	5
10	WASHER, FLAT, SAE, 5/16	151754	5
11	WASHER, FLAT, SAE, 1/4	151915	13
12	SCREW, HEX HD, 1/4-20 X 3/4	152370	9
13	WASHER, LOCK, SPLIT, 1/4	152591	9
14	SCREW, HEX HD, TAP, 1/4-20X 1	152676	2
15	WASHER, 1/2 SPLIT LOCK	153524	2
16	SCREW, 1/2-13 X 1-1/4 HEX HEAD CAP	153532	2
17	VALVE, BALL 1/2"	153796	1
18	COLLAR, SET, 3/4"	153814	2
19	NUT, HEX, TW, 1/4-20	153941	2
20	SCREW, HEX HD, 5/16-18X1-1/4	153950	4
21	WHEEL, REAR 8"	155986	2
22	PLUG, HOLE PLASTIC 3/4"	156615	1
23	APRON	157064	1
24	AXLE (SHAFT)	157065	1
25	COVER, GEAR WELDMENT	157066	1
26	GUARD, BELT	157069	1
27	AXLE, SHAFT, MOUNT	157072	2
28	PLATE, VACUUM	157255	1
29	FLANGE UNIT, 3/4" DIA. 4 BOLT	157304	1
30	FLANGE UNIT, 1" DIA. 4 BOLT	157305	2
31	CAP, VACUUM, 2" DIAM.	157503	1
32	SCREW, SET, 1/4-20 X 1/4	157528	2
33	KEY, 3/16 X 3/16 X 1-3/4	157561	1
34	FITTING, 1/2 MNPT X 1/4 BRASS	157563	1
35	TUBE, COPPER 1/4 DIA. OD	157564	1
36	PULLEY, 2A50 X HQD	159849	1
37	BUSHING, H 3/4 QD	159850	1