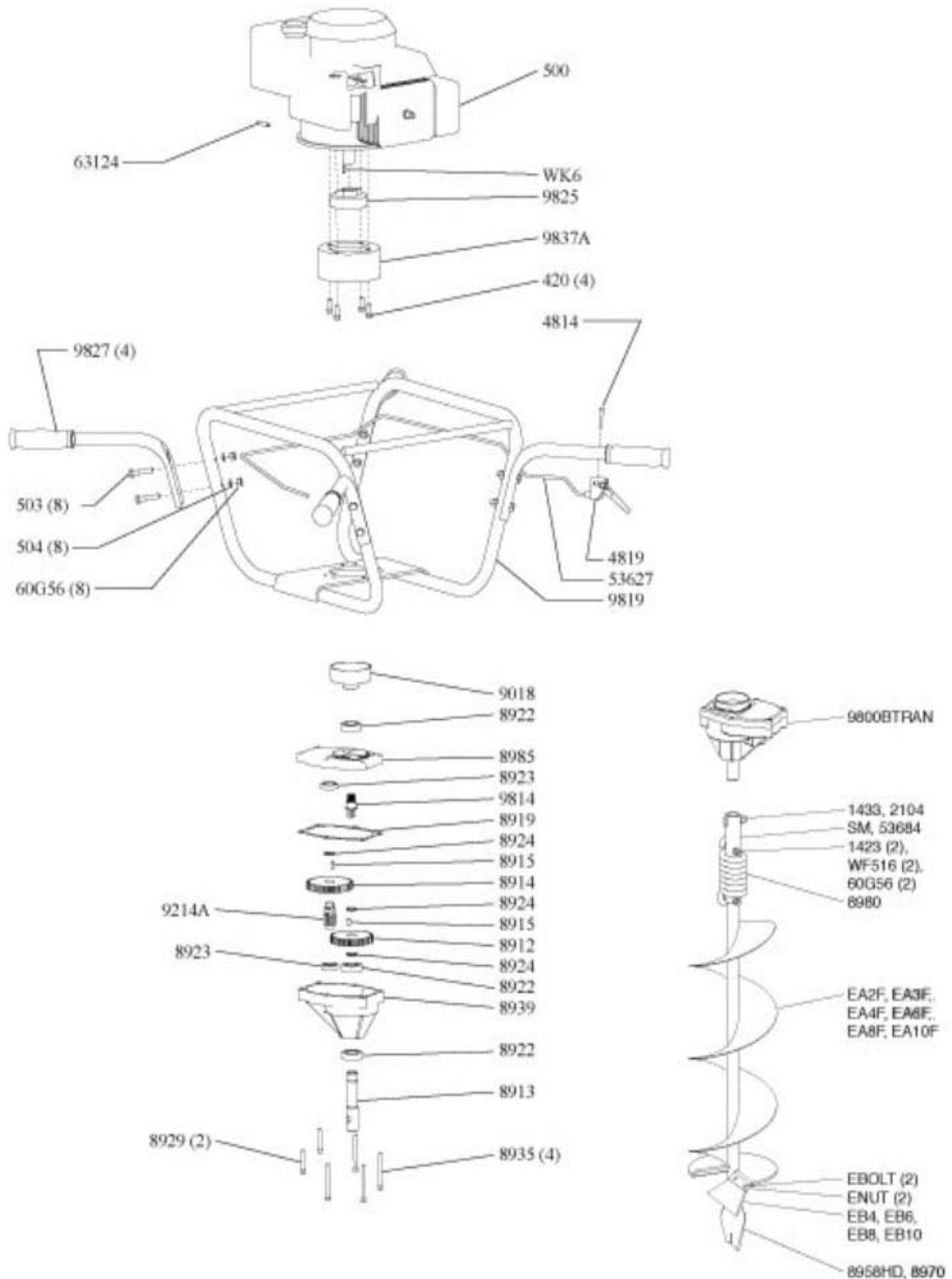


# 9800B™ EARTH AUGER POWERHEAD WITH BRIGGS & STRATTON® ENGINE

## (MODEL YEAR 2007)



Key No.	Part No.	Description
60G56	60G56	60G56 NUT 5/16-18 IN HLKBW GR5 ZN
420	420	420 BOLT 5/16-24 X 3/4IN 12PTF GR2 BLKZN F-T
500	500	500 ENGINE 6.5 HP BRIGGS VERTICAL
503	503	503 BOLT 5/16-18 X 1-1/2 HH GR5 ZN F-T
504	504	504 WASHER 5/16X0.583X0.078 IN SPRLK ZN
1423	1423	1423 BOLT 5/16-18X2 IN HHCS GR5 ZN P-T
1433	1433	1433 BOLT 3/8-16X1-1/2 IN HHCS GR5 ZN P-T
4814	4814	4814 BOLT 10-24X1-1/4 IN PTHMS GR5 ZN F-T
4819	4819	4819 ASSEMBLY TRIGGER LONG THROW
8912	8912	8912 GEAR 44T 14 T/IN 20° PA 3/4 IN ID
8913	8913	8913 SHAFT OUTPUT 7/8 IN
8914	8914	8914 GEAR 48T 14 T/IN 20° PA 3/4 ID HARD
8915	8915	8915 DOWEL PIN STEEL 1/4 IN X 1/2 IN
8919	8919	8919 GASKET POWERHEAD TRANSMISSION
8922	8922	8922 BEARING BALL R12 DOUBLE LIP SEALED 3/4
8923	8923	8923 BEARING BALL R10 OPEN 5/8 IN ID
8924	8924	8924 RING RETAINING EXTERNAL 3/4 INCH
8929	8929	8929 BOLT 1/4-20 X 1-1/2 SHCS GR8 BLK ZN F-T
8935	8935	8935 BOLT 1/4-20X2-1/2 IN SHCS GR5 BLK OX
8939	8939	8939 CASE GEAR BOX LOWER HALF
8958HD	8958HD	8958HD FISHTAIL POINT 3/4-10 UNC RED
8970	8970	8970 POINT EARTH 2 INCH AND 3 INCH AUGERS
8980	8980	8980 SHOCK SPRING EARTH
8985	8985	8985 GEAR CASE UPPER HALF UNPAINTED
9018	9018	9018 CLUTCH DRUM 3 IN THREADED SHORT
9214A	9214A	9214A PINION 10T 14 T/IN 20° PA 3/4 OD

Key No.	Part No.	Description
9811	9811	9811 SWITCH ON/OFF 9800 LEV-115
9814	9814	9814 GEAR PINION 7T 20PA 5/8-18 RH THREADED
9819	9819	9819 HANDLEBAR FRAME WELDMENT 9800B
9825	9825	9825 ROTOR CENTRIFUGAL CLUTCH COMPLETE
9827	9827	9827 HANDLE W/THROTTLE HOLE & 9211 GRIP 9800B
9837A	9837A	9837A MOUNT RING COMPLETE 9800
53627	53627	53627 CABLE THROTTLE 43.50 9800B
53684	53684	53684 SHOCK TOP 1-PC 11/05
EA2F	EA2F	EA2F EARTH AUGER 2 INCH REPL FT RH RED
EA3F	EA3F	EA3F EARTH AUGER 3 INCH REPL FT RH RED
EA4F	EA4F	EA4F EARTH AUGER 4 INCH REPL FT RH RED
EA6F	EA6F	EA6F EARTH AUGER 6 INCH REPL FT RH RED
EA8F	EA8F	EA8F EARTH AUGER 8 INCH REPL FT RH RED
EA10F	EA10F	EA10F EARTH AUGER 10 INCH REPL FT RH RED
EB4	EB4	EB4 EARTH BLADE 4 IN W/HARDWARE
EB6	EB6	EB6 EARTH BLADE 6 IN W/HARDWARE
EB6HD	EB6HD	EB6HD EARTH BLADE 6 IN HEAVY DUTY W/HARDWARE
EB8	EB8	EB8 EARTH BLADE 8 IN W/HARDWARE
EB10	EB10	EB10 EARTH BLADE 10 IN WITH HARDWARE
EB10HD	EB10HD	EB10HD EARTH BLADE 10 IN HEAVY DUTY W/HARDWARE
EBEHD	EB8HD	EB8HD EARTH BLADE 8 IN HEAVY DUTY W/HARDWARE
EBOLT	EBOLT	EBOLT BOLT 1/4-28X5/8 IN HH GR5 ZN F-T
ENUT	ENUT	ENUT NUT 1/4-28X7/32 IN HBW GR5 ZN
EXT6	EXT6	EXT6 EXTENSION 6 IN LONG 7/8 IN CONNECTION
EXT12	EXT12	EXT12 EXTENSION DEPTH 12 IN 7/8 CONNECTION
EXT18	EXT18	EXT18 EXTENSION DEPTH 18 IN 7/8 CONNECTION
SM	SM	SM SHOCK MECHANISM 7/8IN BORE
WF516	WF516	WF516 WASHER 5/16X7/8X5/64 IN GR8 ZN
WK6	WK6	WK6 KEY WOODRUFF 5/32 X 5/8 IN ZN