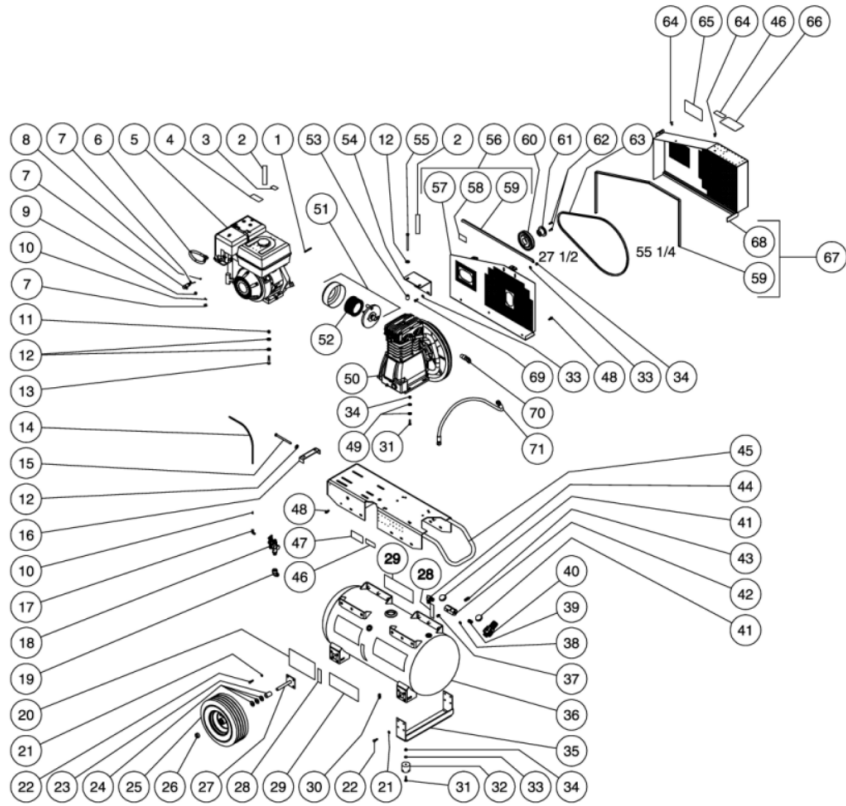




AS2-PH08-30M / AS2-PH08-30M (sn:0-99999999)

TANK ASSEMBLY



Id	Item #	Description	Quantity	Rev	Comments
1	43-0078	KEY	1		
2	N/A Sep.	DECAL- CHECK OIL TAPE (SEE 34-9016)	2		
3	N/A Sep.	DECAL- ENGINE FUEL (SEE 34-9016)	1		
4	N/A Sep.	DECAL- MUFFLER HOT (SEE 34-9016)	1		

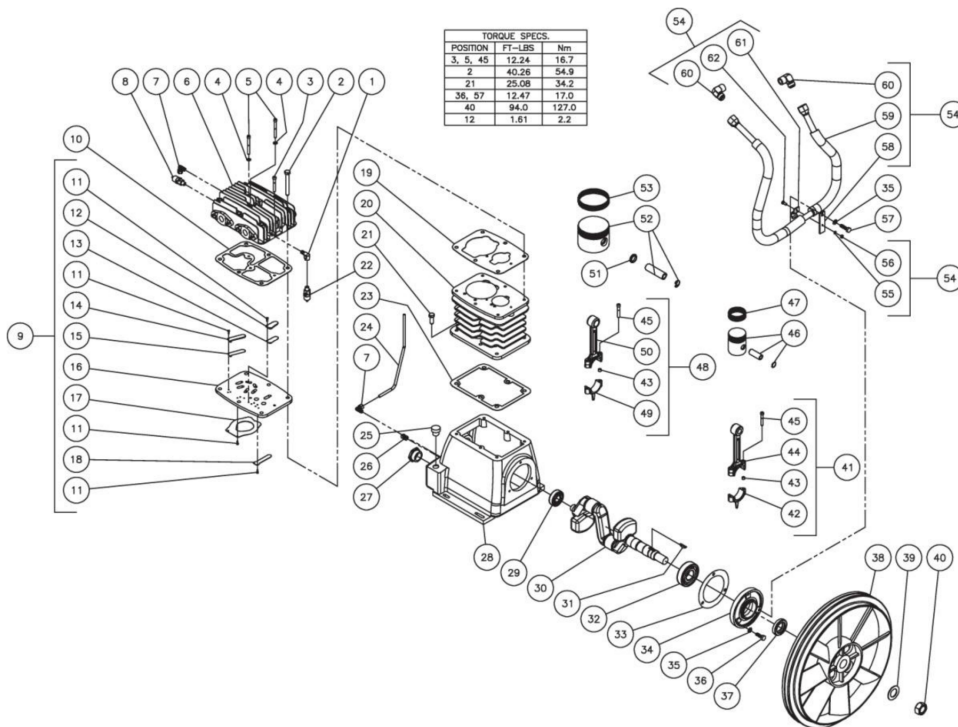
Id	Item #	Description	Quantity	Rev	Comments
5	1-0037	ENGINE- 8 HP HONDA	1		
6	70-0358	DRAINZIT DRAIN ASSEMBLY	1		
7	33-0413	THROTTLE CONTROL	1		
8	62-0126	THROTTLE CONTROL ADAPTER	1		
9	23-0315	NUT	1		
10	23-0425	TUBE SUPPORT	2		
11	30-0159	LOCKNUT	4		
12	28-0023	FLATWASHER	11		
13	27-0121	BOLT	4		
14	15-0238	TUBE *(TWO FEET REQUIRED)	1		
15	27-0133	BOLT	1		
16	20-0650A01	BELT TENSION PLATE	1		
17	23-0316	ELBOW	1		
18	22-0270	PILOT VALVE	1		
19	24-0041	ELBOW	1		
20	N/A Sep.	DECAL- WARNING/WARNING/CAUTION (SEE 34-9016)	1		
21	29-0007	LOCKWASHER	16		
22	27-0067	BOLT	16		
23	62-0176	AXLE SPACER	2		
24	28-0008	WASHER	6		
25	14-0006	WHEEL	2		
26	33-0351	SHAFT	2		
27	20-0670A01	AXLE STUB BRACKET	2		
28	N/A Sep.	DECAL- TANK DRAIN (SEE 34-9016)	2		
29	34-0828	DECAL- MI-T-M AIR COMPRESSOR	2		
30	23-0312	PETCOCKS	1		
31	27-0068	BOLT	6		
32	14-0008	ISOLATOR	2		
33	28-0003	WASHER	6		
34	30-0157	LOCKNUT	8		
35	20-0671A01	SUPPORT FOOT BRACKET	1		
36	N/A	AIR TANK ASSEMBLY	1		
37	24-0009	PLUG	1		
38	24-0082	PLUG	1		
39	24-0175	NIPPLE	1		
40	22-0231	ADJUSTABLE REGULATOR	1		
41	22-0271	PRESSURE GAUGE	2		
42	24-0266	MANIFOLD	1		
43	22-0267	PRESSURE RELIEF VALVE	1		

Id	Item #	Description	Quantity	Rev	Comments
44	24-0267	ELBOW	1		
45	5-0198A01	BASEPLATE	1		
46	N/A Sep.	DECAL- WARNING: RISK OF BURNS (SEE 34-9016)	2		
47	N/A	DECAL- DATA PLATE	1		
48	27-9524	BOLT	15		
49	28-0022	WASHER	8		
50	3-0233	PUMP	1		
51	19-0225	FILTER CANISTER	1		
52	19-0226	FILTER	1		
53	33-0425	SPACER	2		
54	20-0734A01	ANGLE BRACKET	1		
55	27-0131	BOLT	2		
56	854-0066	BELTGUARD ASSEMBLY (INC. 57-59)	1		
57	N/A Sep.	BELTGUARD BACK (SEE 854-0068)	1		
58	N/A Sep.	DECAL- WARNING: BELTGUARD IN PLACE (SEE 34-9016)	1		
59	33-0020	EDGING *(SEVEN FEET REQUIRED)	1		
60	10-0123	SHEAVE	1		
61	9-0005	BUSHING	1		
62	27-0015	SCREW	2		
63	11-0058	DRIVE BELT	1		
64	33-0197	FASTENER	2		
65	N/A Sep.	DECAL- MAINTENANCE INSTRUCTIONS (SEE 34-9016)	1		
66	N/A Sep.	DECAL- OPERATING INSTRUCTIONS (SEE 34-9016)	1		
67	854-0067	BELTGUARD ASSEMBLY COVER (INC. 59, 68)	1		
68	N/A Sep.	BELTGUARD FRONT ASSEMBLY (SEE 854-0067)	1		
69	27-0066	SCREW	2		
70	24-0075	ELBOW	1		
71	15-0243	HOSE	1		
	34-9016	DECAL KIT (INC. 2-4, 20, 28, 46, 58, 65-66)			
		*MUST ORDER IN ONE FOOT LENGTHS			



AS2-PH08-30M / AS2-PH08-30M (sn:0-99999999)

COMPRESSOR PUMP



Id	Item #	Description	Quantity	Rev	Comments
1	23-0118	ELBOW	1		
2	27-0576	BOLT	6		
3	27-9559	SCREW	1		
4	N/A Sep.	FLAT WASHER (SEE 70-0364 OR 70-0371)	2		
5	27-9558	SCREW	1		
6	46-1119	CYLINDER HEAD	1		
7	23-0316	ELBOW	2		
8	22-0362	LOW PRESSURE SAFETY VALVE	1		
9	46-1094	VALVE PLATE (INC. 11-18)	1		
10	N/A Sep.	VALVE PLATE GASKET (SEE 70-0361 OR 70-0366)	1		
11	27-9561	SCREW	12		
12	N/A Sep.	VALVE STOP 1 (SEE 46-1094 OR 70-0366)	2		
13	N/A Sep.	VALVE 1 (SEE 46-1094 OR 70-0366)	2		
14	N/A Sep.	VALVE STOP 2 (SEE 46-1094 OR 70-0366)	2		

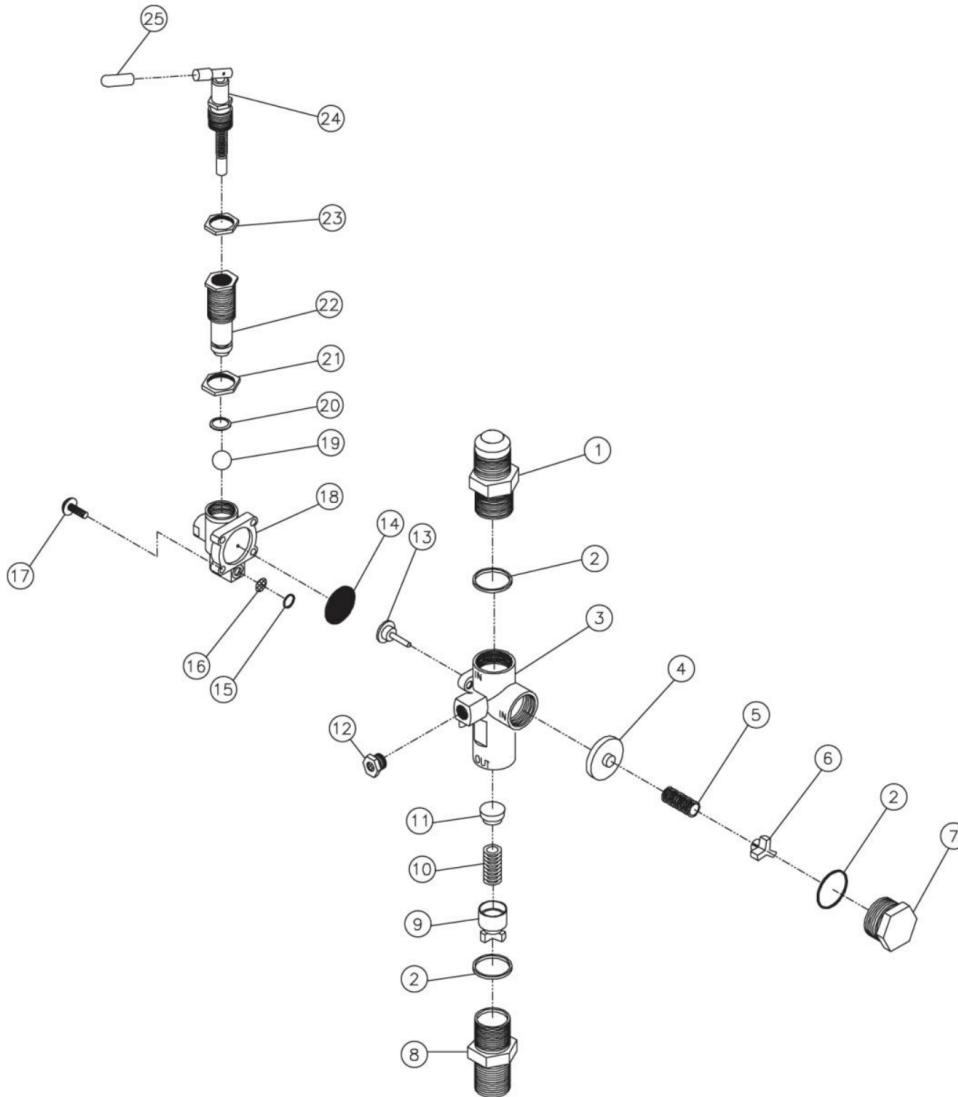
Id	Item #	Description	Quantity	Rev	Comments
15	N/A Sep.	VALVE 2 (SEE 46-1094 OR 70-0366)	2		
16	N/A Sep.	VALVE PLATE (SEE 46-1094)	1		
17	N/A Sep.	VALVE 3 (SEE 46-1094 OR 70-0366)	1		
18	N/A Sep.	VALVE 4 (SEE 46-1094 OR 70-0366)	1		
19	N/A Sep.	VALVE PLATE GASKET (SEE 70-0361 OR 70-0366)	1		
20	46-1120	CYLINDER	1		
21	27-0117	BOLT	6		
22	22-0361	HIGH PRESSURE SAFETY VALVE	1		
23	N/A Sep.	CRANKCASE GASKET (SEE 70-0361)	1		
24	33-0415	CRANKCASE BREATHER TUBE	1		
25	46-1121	OIL FILL PLUG	1		
26	24-0009	PLUG	1		
27	46-1098	OIL SIGHT GLASS	1		
28	46-1122	CRANKCASE	1		
29	48-0081	BEARING	1		
30	46-1123	CRANKSHAFT	1		
31	43-0112	KEY	1		
32	48-0082	BEARING	1		
33	N/A Sep.	FLANGE GASKET (SEE 70-0361)	1		
34	38-0062	FLANGE	1		
35	29-0007	LOCKWASHER	3		
36	27-0067	BOLT	2		
37	26-0274	OIL SEAL	1		
38	10-0124	FLYWHEEL	1		
39	N/A	WASHER	1		
40	N/A	NUT	1		
41	70-0381	CONNECTING ROD	1		
42	N/A Sep.	CONNECTING ROD CAP (SEE 70-0381)	1		
43	N/A Sep.	CONNECTING ROD GUIDE BUSHING (SEE 70-0381 OR 70-0382)	4		
44	N/A Sep.	CONNECTING ROD (SEE 70-0381)	1		
45	N/A Sep.	BOLT (SEE 70-0381 OR 70-0382)	4		
46	46-1101	PISTON	1		
47	70-0362	RING KIT	1		
48	70-0382	LOW PRESSURE CONNECTING ROD KIT	1		
49	N/A Sep.	LOW PRESSURE ROD CAP (SEE 70-0382)	1		
50	N/A Sep.	LOW PRESSURE ROD (SEE 70-0382)	1		
51	9-0078	SPACER BUSHING	2		
52	46-1102	PISTON	1		
53	70-0363	RING KIT	1		

Id	Item #	Description	Quantity	Rev	Comments
54	70-0370	INTERCOOLER KIT	1		
55	N/A Sep.	LOCKWASHER (SEE 70-0365 OR 70-0370)	1		
56	30-6001	NUT	1		
57	27-0068	BOLT	1		
58	N/A Sep.	INTERCOOLER BRACKET ASSEMBLY (SEE 70-0370)	1		
59	N/A Sep.	INTERCOOLER (SEE 70-0370)	1		
60	23-0430	ELBOW	2		
61	N/A Sep.	INTERCOOLER CLAMP ASSEMBLY (SEE 70-0365 OR 70-0370)	1		
62	27-8805	SCREW	1		
KIT	70-0361	GASKET (INC. 10, 19, 23, 33)			
KIT	70-0362	RING (INC. 47)			
KIT	70-0363	RING (INC. 53)			
KIT	70-0365	BRACKET ASSEMBLY (INC. 55-56, 61-62)			
KIT	70-0366	GASKET VALVE (INC. 10-15, 17-19)			
KIT	70-0370	INTERCOOLER (INC. 55-56, 58-62)			
KIT	70-0382	LOW PRESSURE CONNECTING ROD (INC. 43, 45, 49, 50)			
KIT	70-0381	HIGH PRESSURE CONNECTING ROD (INC. 42-45)			



AS2-PH08-30M / AS2-PH08-30M (sn:0-99999999)

PILOT VALVE



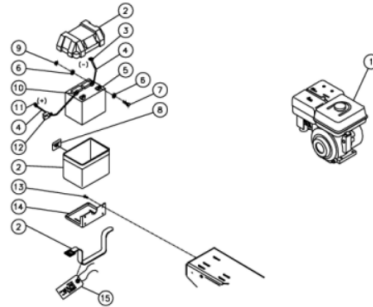
Id	Item #	Description	Quantity	Rev	Comments
1	N/A	INLET PORT FITTING	1		
2	N/A Sep.	O-RING (SEE 70-0241)	3		
3	N/A	MAIN BODY	1		
4	N/A Sep.	PISTON ASSEMBLY-UNLOADER VALVE (SEE 70-0241)	1		
5	N/A Sep.	SPRING-UNLOADER VALVE (SEE 70-0241)	1		
6	N/A	SPRING SEAT-UNLOADER VALVE	1		
7	N/A	CAP	1		

Id	Item #	Description	Quantity	Rev	Comments
8	N/A	DISCHARGE PORT FITTING	1		
9	N/A	SPRING SEAT ASSEMBLY-CHECK VALVE	1		
10	N/A Sep.	SPRING-CHECK VALVE (SEE 70-0241)	1		
11	N/A Sep.	PISTON-CHECK VALVE (SEE 70-0241)	1		
12	23-0419	MUFFLER	1		
13	N/A Sep.	STEM UNLOADER (SEE 70-0241)	1		
14	N/A Sep.	DIAPHRAM (SEE 70-0241)	1		
15	N/A Sep.	O-RING (SEE 70-0241)	1		
16	N/A Sep.	SCREEN (SEE 70-0241)	1		
17	N/A	SCREW W/WASHER	4		
18	N/A	PILOT BODY	1		
19	N/A Sep.	BALL (SEE 70-0241)	1		
20	N/A Sep.	O-RING (SEE 70-0241)	1		
21	N/A	DIFFERENTIAL ADJUSTING LOCKNUT	1		
22	N/A	DIFFERENTIAL ADJUSTING NUT	1		
23	N/A	PRESSURE ADJUSTING LOCKNUT	1		
24	N/A Sep.	PRESSURE ADJUSTING TOGGLE ASSEMBLY (SEE 70-0241)	1		
25	N/A	RED TOGGLE COVER	1		
KIT	70-0241	REPAIR KIT (INC. 2 EACH 4-5, 10-11, 13-16, 19-20, 24; INC. 3 EACH 2)			



AS2-PH08-30M / AS2-PH08-30M (sn:0-99999999)

HONDA ELECTRIC START OPTION AX-0017



Id	Item #	Description	Quantity	Rev	Comments
1	1-0126	ENGINE- HONDA 8HP ELECTRIC START	1		
2	33-0092	BATTERY BOX	1		
3	32-0744	TERMINAL	1		
4	32-0065	BATTERY CABLE *(THREE FEET REQUIRED)	1		

Id	Item #	Description	Quantity	Rev	Comments
5	32-0058	BATTERY	1		
6	28-0003	WASHER	4		
7	27-0066	BOLT	2		
8	34-0589	DECAL- BATTERY	1		
9	30-0157	LOCKNUT	2		
10	32-0097	TERMINAL	2		
11	32-0098	TERMINAL	1		
12	33-0004	BATTERY CABLE COVER	1		
13	27-9524	BOLT	4		
14	20-0625A01	BATTERY BOX BRACKET	1		
15	34-0096	TAG- BATTERY	1		

*MUST ORDER IN ONE FOOT LENGTHS