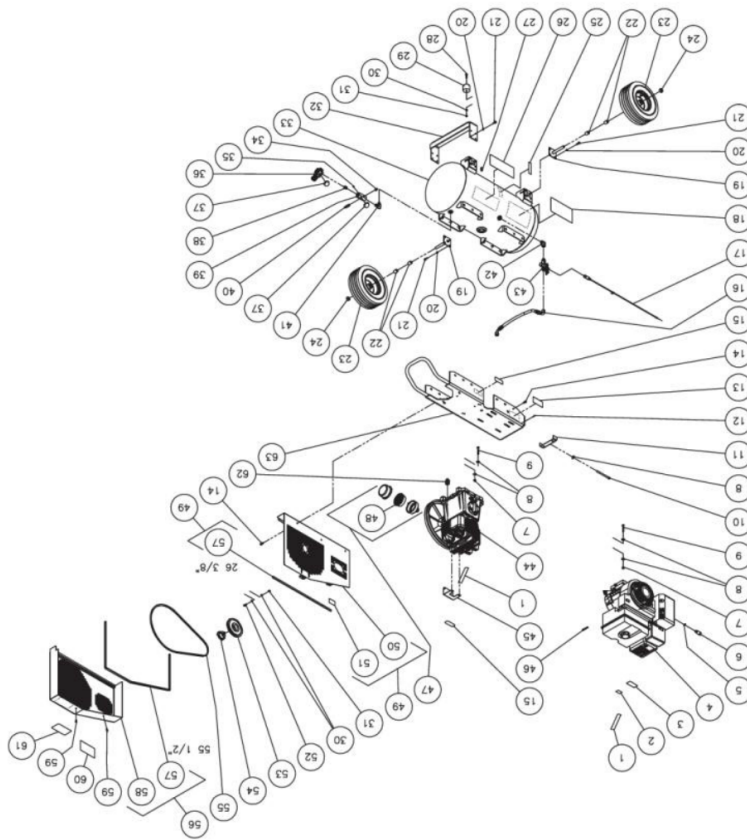




AC2-PV11-30M / AC2-PV11-30M (sn:0-99999999)

## TANK ASSEMBLY



Id	Item #	Description	Quantity	Rev	Comments
1	N/A Sep.	DECAL- CHECK OIL TAPE (SEE 34-9016)	2		
2	N/A Sep.	DECAL- ENGINE FUEL (SEE 34-9016)	1		
3	N/A Sep.	DECAL- MUFFLER HOT (SEE 34-9016)	1		
4	1-0089	ENGINE- 11HP VANGUARD	1		

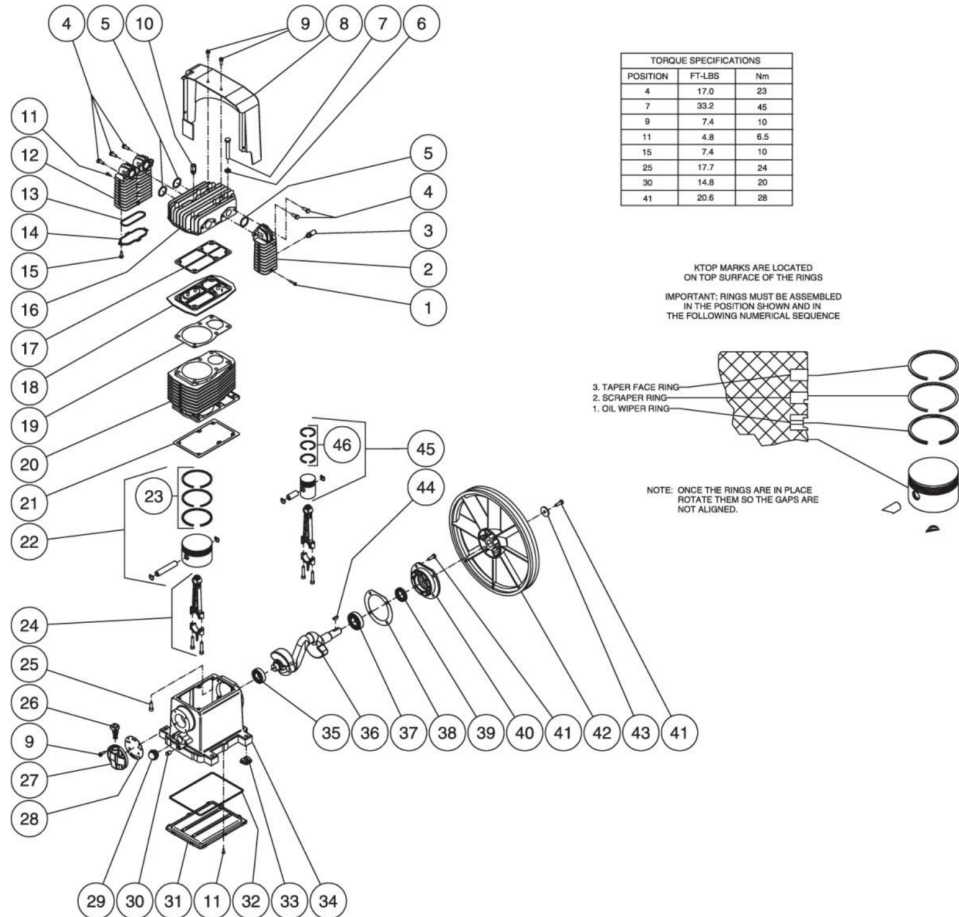
<b>Id</b>	<b>Item #</b>	<b>Description</b>	<b>Quantity</b>	<b>Rev</b>	<b>Comments</b>
5	28-0606	GASKET	1		
6	24-0142	OIL DRAIN EXTENSION	1		
7	30-0159	LOCKNUT	8		
8	28-0023	FLATWASHER	17		
9	27-0122	BOLT	8		
10	27-0133	BOLT	1		
11	20-0650A01	BELT TENSIONER PLATE	1		
12	27-3064	SELF TAPPING DRILL SCREW	1		
13	N/A	DECAL- DATA PLATE	1		
14	27-9524	BOLT	15		
15	N/A Sep.	DECAL- WARNING: HOT SURFACE (SEE 34-9016)	2		
16	15-0188	HOSE	1		
17	33-0408	THROTTLE CONTROL	1		
18	N/A Sep.	DECAL- DANGER/WARNING/CAUTION (SEE 34-9016)	1		
19	20-0670A01	AXLE STUB BRACKET	2		
20	29-0007	LOCKWASHER	16		
21	27-0067	BOLT	16		
22	20-0313A01	AXLE SPACER	4		
23	14-0006	WHEEL	2		
24	33-0351	SHAFT	2		
25	N/A Sep.	DECAL- TANK DRAIN (SEE 34-9016)	2		
26	34-0828	DECAL- MI-T-M AIR COMPRESSORS	2		
27	23-0312	PETCOCKS	1		
28	27-0068	BOLT	2		
29	14-0008	ISOLATOR	2		
30	28-0003	WASHER	6		
31	30-0157	LOCKNUT	4		
32	20-0671A01	SUPPORT FOOT BRACKET	1		
33	N/A	AIR TANK ASSEMBLY	1		
34	24-0009	PLUG	1		
35	24-0082	PLUG	1		
36	22-0231	ADJUSTABLE REGULATOR	1		
37	22-0271	PRESSURE GAUGE	2		
38	24-0175	NIPPLE	1		
39	24-0266	MANIFOLD	1		
40	22-0267	PRESSURE RELIEF VALVE	1		
41	24-0267	ELBOW	1		
42	24-0041	ELBOW	1		
43	22-0270	PILOT VALVE	1		

Id	Item #	Description	Quantity	Rev	Comments
44	3-0222	COMPRESSOR	1		
45	20-0623A01	BELTGUARD BRACKET	1		
46	43-0078	KEY	1		
47	19-0219	AIR FILTER CANISTER	1		
48	19-0220	FILTER ELEMENT	1		
49	854-0039	BELTGUARD BACK ASSEMBLY (INC. 50, 51, 57)	1		
50	N/A Sep.	BELTGUARD BACK (SEE 854-0039)			
51	N/A Sep.	DECAL- WARNING: BELTGUARD IN PLACE (SEE 34-9016)	1		
52	27-0066	SCREW	2		
53	10-0120	DRIVE PULLEY	1		
54	9-0076	BUSHING	1		
55	11-0044	DRIVE BELT	1		
56	854-0026	BELTGUARD FRONT ASSEMBLY (INC. 57, 58)	1		
57	33-0020	EDGING *(SEVEN FEET REQUIRED)	1		
58	N/A Sep.	BELTGUARD COVER (SEE 854-0026)	1		
59	33-0197	FASTENER	2		
60	N/A Sep.	DECAL- MAINTENANCE INSTRUCTIONS (SEE 34-9016)	1		
61	N/A Sep.	DECAL- OPERATING INSTRUCTIONS (SEE 34-9016)	1		
62	24-0160	ADAPTER	1		
63	5-0176A01	BASEPLATE ASSEMBLY	1		
	34-9016	SAFETY DECAL KIT (INC. 1-3, 15, 18, 25, 51, 60, 61)			
		*MUST ORDER IN ONE FOOT LENGTHS			



AC2-PV11-30M / AC2-PV11-30M (sn:0-99999999)

## TWO STAGE COMPRESSOR



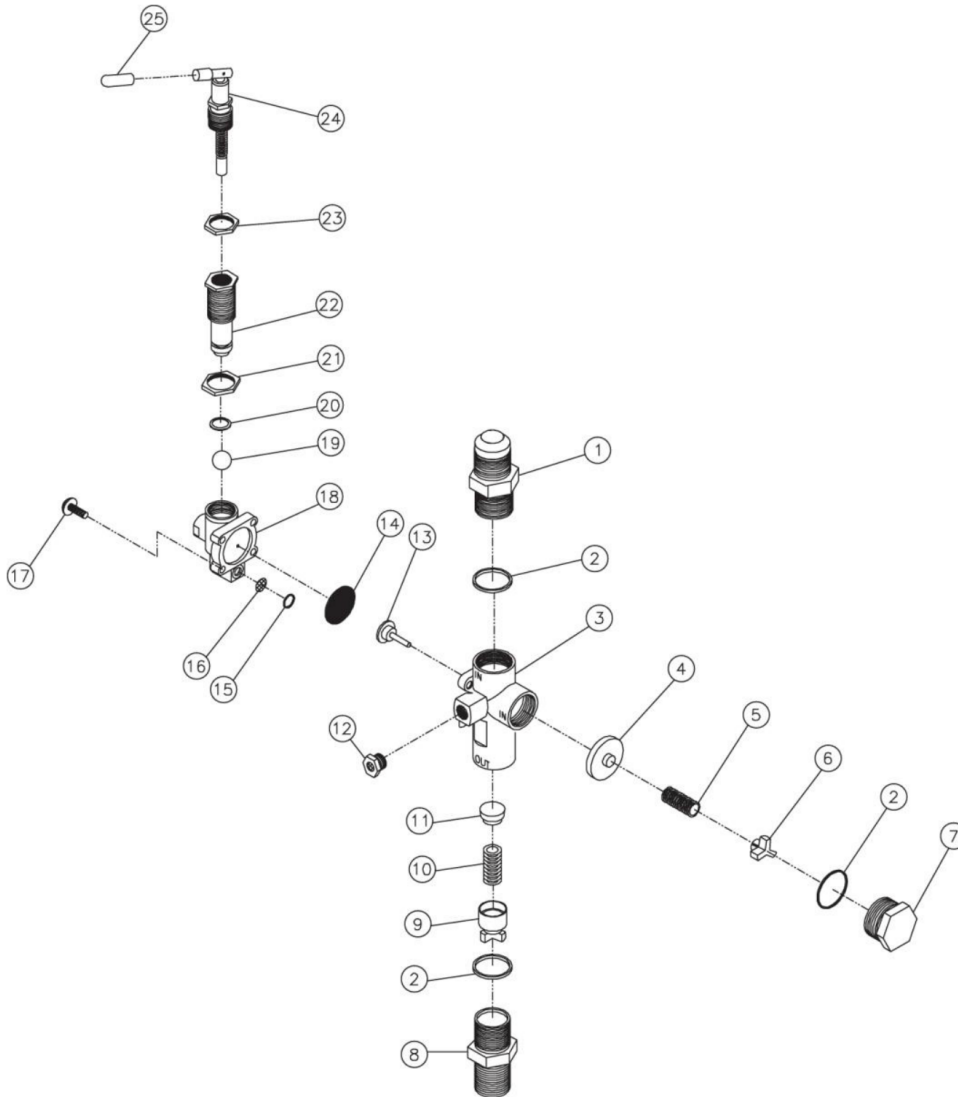
Id	Item #	Description	Quantity	Rev	Comments
1	27-8807	BOLT	1		
2	46-1156	AFTER COOLER	1		
3	22-0385	SAFETY VALVE	1		
4	27-8032	BOLT	5		
5	25-0439	O-RING	3		
6	28-1021	WASHER	6		
7	27-8934	BOLT	6		
8	N/A	AIR SHROUD	1		
9	27-8002	BOLT	6		
10	22-0386	SAFETY VALVE	1		

<b>Id</b>	<b>Item #</b>	<b>Description</b>	<b>Quantity</b>	<b>Rev</b>	<b>Comments</b>
11	27-9575	BOLT	11		
12	46-1157	INTER COOLER	1		
13	25-0440	O-RING	1		
14	46-0816	INTERCOOLER COVER	1		
15	27-8906	BOLT	4		
16	46-1158	PUMP HEAD	1		
17	N/A Sep.	HEAD GASKET (SEE 70-0345)	1		
18	22-0283	VALVE PLATE ASSEMBLY	1		
19	N/A Sep.	CYLINDER GASKET (SEE 70-0345)	1		
20	46-1176	CYLINDER	1		
21	N/A Sep.	CRANKCASE GASKET (SEE 70-0345)	1		
22	N/A	COMPLETE PISTON	1		
23	70-0344	RING SET KIT	1		
24	N/A	CONNECTING ROD	2		
25	27-8194	BOLT	6		
26	46-0818	CRANKCASE FILL HOLE PLUG W/O-RING	1		
27	46-0819	OIL FILL END CAP	1		
28	N/A Sep.	OIL FILL END CAP GASKET (SEE 70-0345)	1		
29	46-0820	OIL LEVEL SIGHT GLASS W/GASKET	1		
30	39-0106	OIL DRAIN PLUG	1		
31	N/A	OIL PAN	1		
32	N/A Sep.	OIL PAN O-RING (SEE 70-0345)	1		
33	46-0821	ISOLATOR	4		
34	N/A	CRANKCASE	1		
35	48-0060	BALL BEARING	1		
36	N/A	PISTON CRANKSHAFT	1		
37	48-0024	BALL BEARING	1		
38	N/A Sep.	FRONT END CAP GASKET (SEE 70-0345)	1		
39	26-0208	CRANKSAFT SEAL	1		
40	46-0822	FRONT END CAP	1		
41	27-8033	BOLT	5		
42	10-0130	FLYWHEEL	1		
43	28-1032	WASHER	1		
44	43-0102	KEY	1		
45	N/A	COMPLETE PISTON	1		
46	70-0239	RING SET KIT	1		
KIT	70-0345	GASKET KIT (INC. 5, 13, 17, 19, 21, 28, 32, 38)	1		



AC2-PV11-30M / AC2-PV11-30M (sn:0-99999999)

## PILOT VALVE



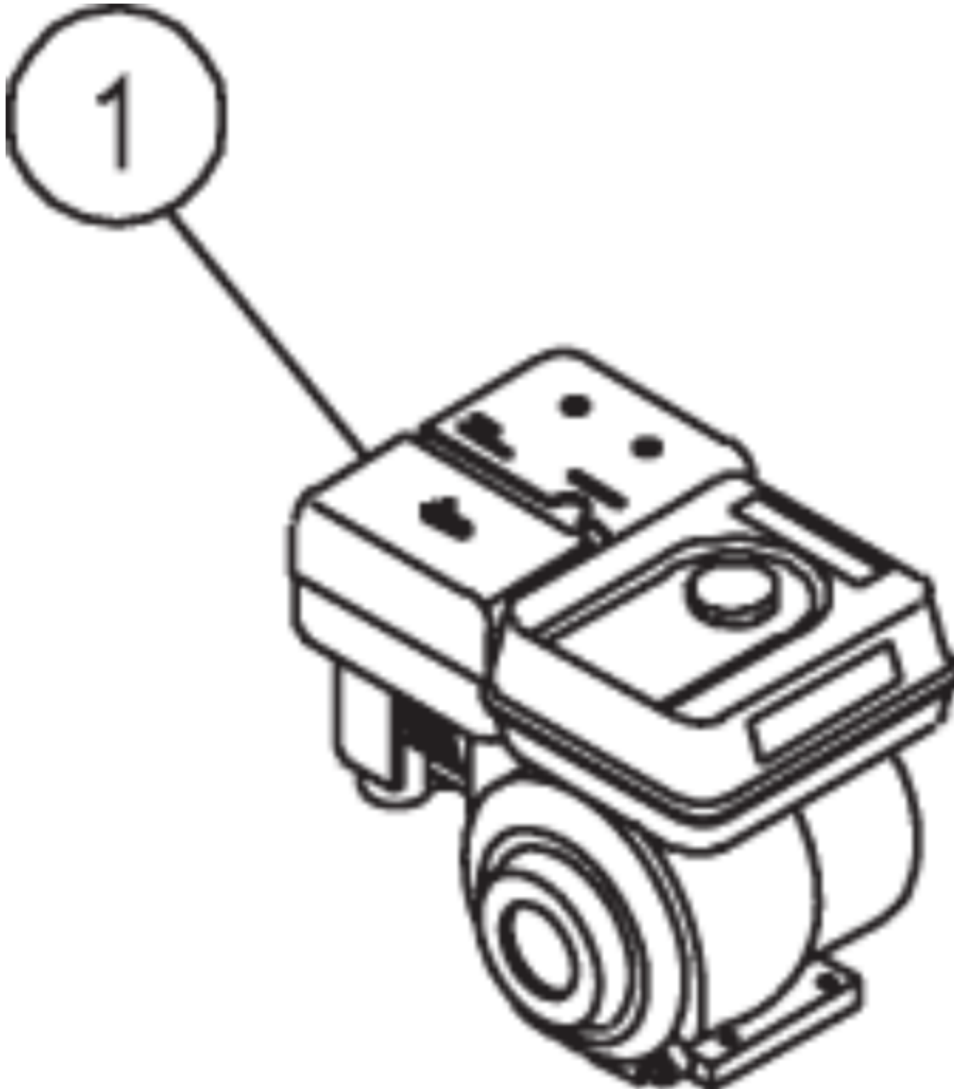
Id	Item #	Description	Quantity	Rev	Comments
1	N/A	INLET PORT FITTING	1		
2	N/A Sep.	O-RING (SEE 70-0241)	3		
3	N/A	MAIN BODY	1		
4	N/A Sep.	PISTON ASSEMBLY-UNLOADER VALVE (SEE 70-0241)	1		
5	N/A Sep.	SPRING-UNLOADER VALVE (SEE 70-0241)	1		
6	N/A	SPRING SEAT-UNLOADER VALVE	1		
7	N/A	CAP	1		

<b>Id</b>	<b>Item #</b>	<b>Description</b>	<b>Quantity</b>	<b>Rev</b>	<b>Comments</b>
8	N/A	DISCHARGE PORT FITTING	1		
9	N/A	SPRING SEAT ASSEMBLY-CHECK VALVE	1		
10	N/A Sep.	SPRING-CHECK VALVE (SEE 70-0241)	1		
11	N/A Sep.	PISTON-CHECK VALVE (SEE 70-0241)	1		
12	23-0419	MUFFLER	1		
13	N/A Sep.	STEM UNLOADER (SEE 70-0241)	1		
14	N/A Sep.	DIAPHRAM (SEE 70-0241)	1		
15	N/A Sep.	O-RING (SEE 70-0241)	1		
16	N/A Sep.	SCREEN (SEE 70-0241)	1		
17	N/A	SCREW W/WASHER	4		
18	N/A	PILOT BODY	1		
19	N/A Sep.	BALL (SEE 70-0241)	1		
20	N/A Sep.	O-RING (SEE 70-0241)	1		
21	N/A	DIFFERENTIAL ADJUSTING LOCKNUT	1		
22	N/A	DIFFERENTIAL ADJUSTING NUT	1		
23	N/A	PRESSURE ADJUSTING LOCKNUT	1		
24	N/A Sep.	PRESSURE ADJUSTING TOGGLE ASSEMBLY (SEE 70-0241)	1		
25	N/A	RED TOGGLE COVER	1		
KIT	70-0241	REPAIR KIT (INC. 2 EACH 3, 4-5, 10-11, 13-16, 19-20, 24			



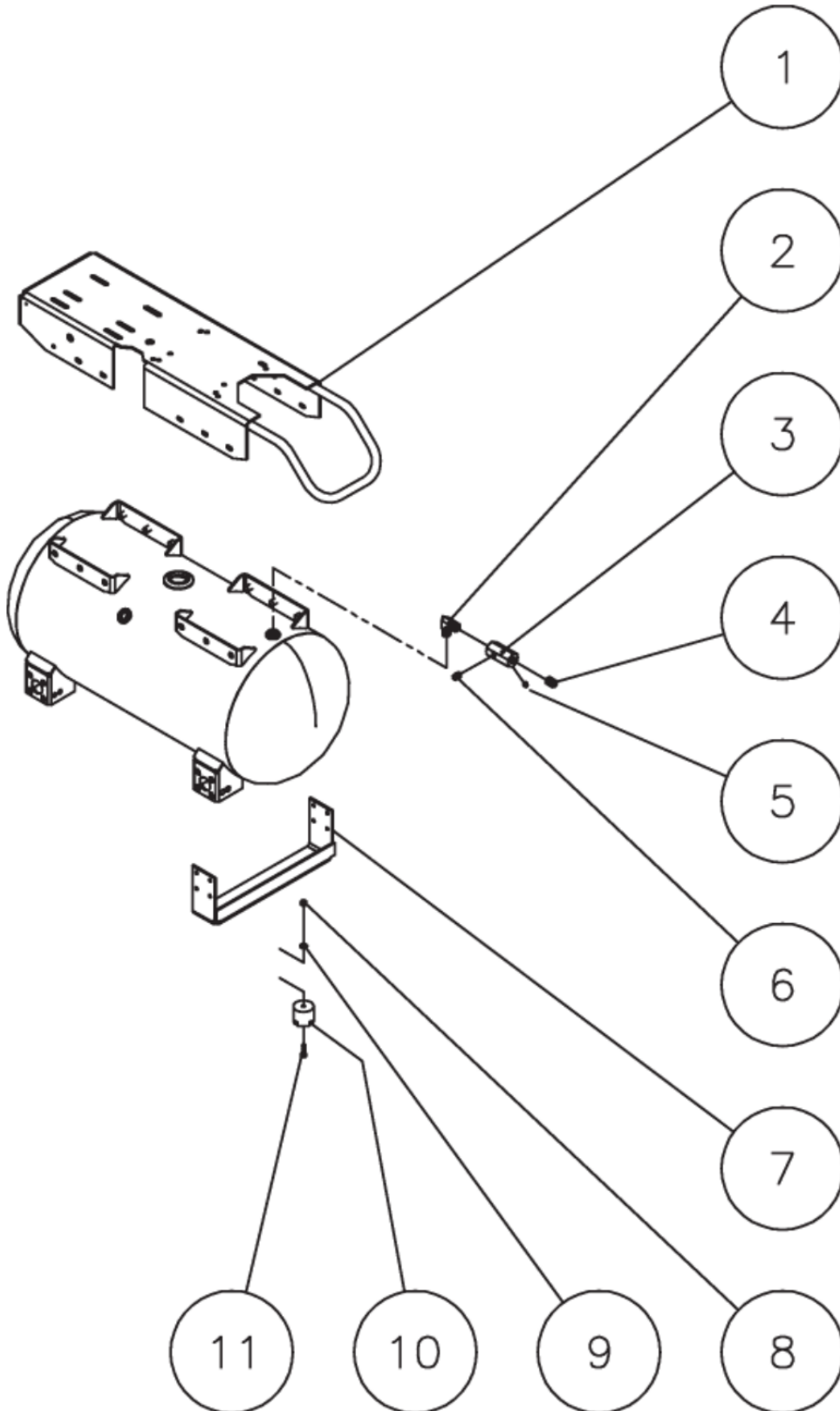
AC2-PV11-30M / AC2-PV11-30M (sn:0-99999999)

## AX OPTION BATTERY



Id	Item #	Description	Quantity	Rev	Comments
1	1-0039	ENGINE- HONDA 11HP	1		

# AX OPTION BREAKS



Id	Item #	Description	Quantity	Rev	Comments
1	5-0198A01	BASE PLATE ASSEMBLY	1		
2	24-0267	ELBOW	1		
3	24-0266	MANIFOLD	1		
4	24-0175	NIPPLE	1		

<b>Id</b>	<b>Item #</b>	<b>Description</b>	<b>Quantity</b>	<b>Rev</b>	<b>Comments</b>
5	24-0082	PLUG	1		
6	24-0009	PLUG	1		
7	20-0671A01	SUPPORT FOOT BRACKET	1		
8	30-0157	LOCKNUT	2		
9	28-0003	WASHER	2		
10	14-0008	ISOLATOR	2		
11	27-0068	SCREW	2		