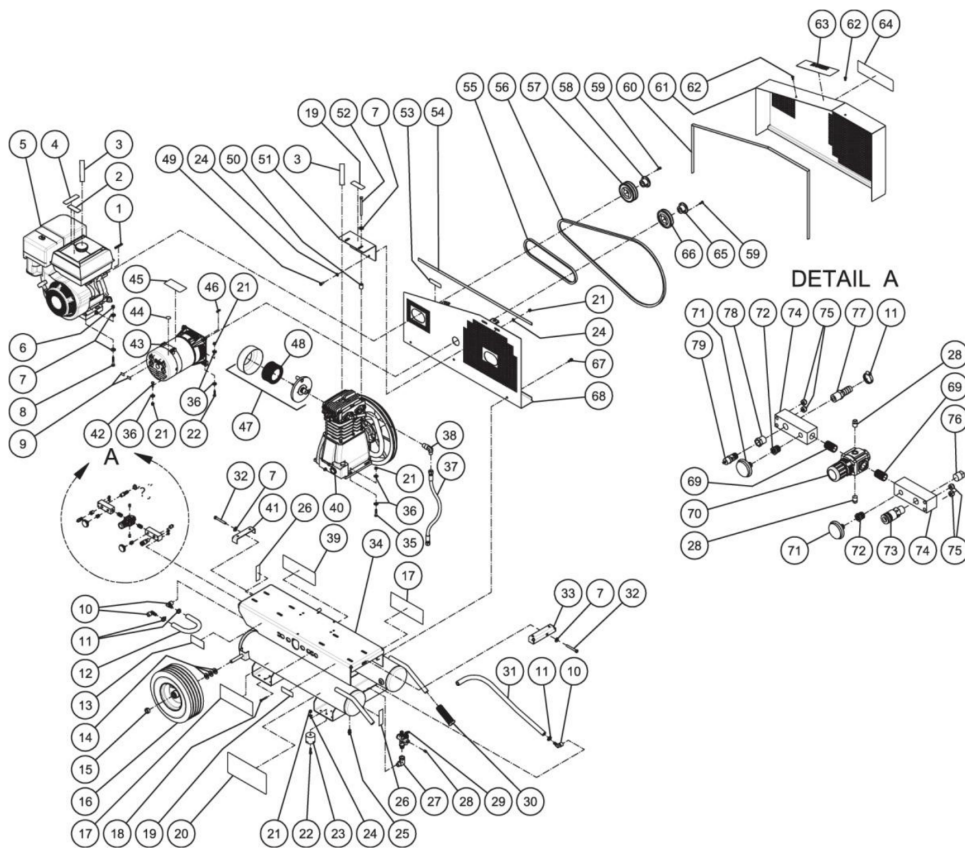




AG2-PH13-08M / AG2-PH13-08M (sn:0-99999999)

## TANK ASSEMBLY



Id	Item #	Description	Quantity
1	43-0078	KEY	1
2	N/A Sep.	DECAL- CAUTION: RISK OF FIRE (SEE 34-9036)	1
3	N/A Sep.	DECAL- CHECK OIL TAPE (SEE 34-9036)	2
4	N/A Sep.	DECAL- WARNING: RISK OF BURNS (SEE 34-9036)	1
5	1-0086	ENGINE- 13.0 HP HONDA	1
6	30-0159	LOCKNUT	4
7	28-0023	FLATWASHER	12
8	27-0121	BOLT	4
9	N/A Sep.	DECAL- 115V (SEE 34-9036)	2
10	23-0418	ELBOW	3
11	42-0011	HOSE CLAMP	2
12	15-0007	HOSE *(TWO FEET REQUIRED)	1

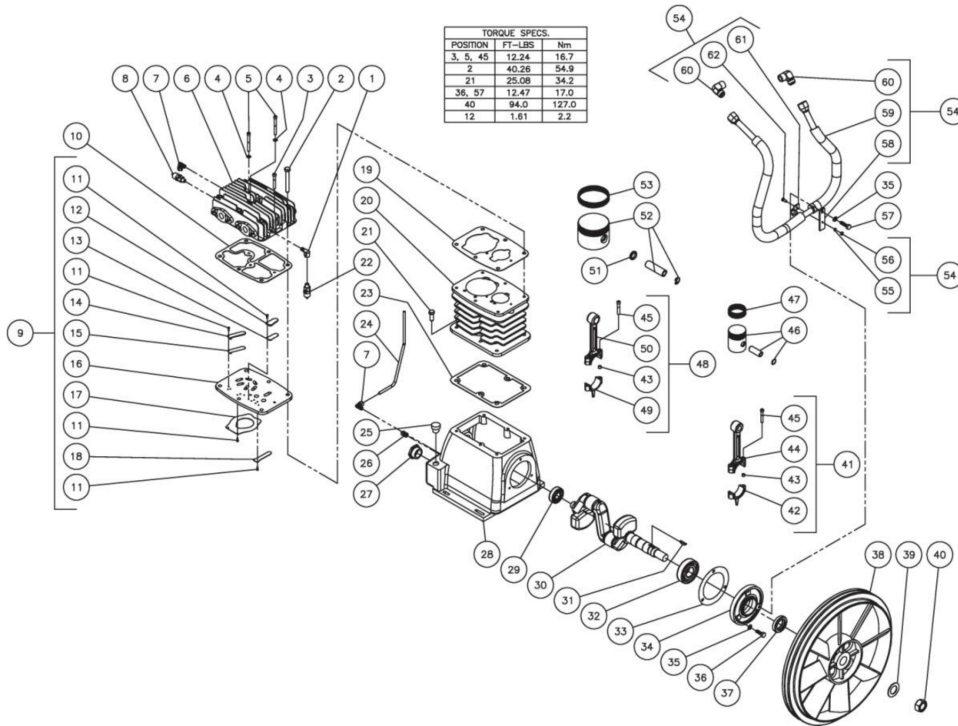
<b>Id</b>	<b>Item #</b>	<b>Description</b>	<b>Quantity</b>
13	N/A	DECAL- DATA PLATE	1
14	28-0008	WASHER	6
15	33-0351	COLLAR/SHAFT	2
16	14-0006	WHEEL	2
17	34-0828	DECAL- MI-T-M AIR COMPRESSORS	2
18	27-0019	BOLT	4
19	N/A Sep.	DECAL- WARNING: RISK OF BURNS (SEE 34-9036)	2
20	N/A Sep.	DECAL- WARNING/OPERATIONS (SEE 34-9036)	1
21	30-0157	LOCKNUT	11
22	27-0068	BOLT	4
23	14-0008	ISOLATOR	2
24	28-0003	WASHER	6
25	23-0312	PETCOCKS	2
26	N/A Sep.	DECAL- TANK DRAIN (SEE 34-9036)	2
27	24-0006	ELBOW	1
28	24-0082	PLUG	3
29	22-0270	PILOT VALVE	1
30	7-0059	HANDLE GRIP	2
31	15-0007	HOSE *(THREE FEET REQUIRED)	1
32	27-0576	BOLT	2
33	20-0812A01	BRACKET TIGHTENER	1
34	N/A	TANK	1
35	27-0069	BOLT	4
36	28-0022	WASHER	13
37	15-0251	HOSE	1
38	24-0075	ELBOW	1
39	N/A Sep.	DECAL- MAINTENANCE INSTRUCTIONS (SEE 34-9036)	1
40	3-0233	PUMP	1
41	20-0650A01	BELT TIGHTENER BRACKET	1
42	27-0067	BOLT	1
43	32-0872	GENERATOR	1
44	N/A Sep.	DECAL- GROUND PICTORIAL (SEE 34-9036)	1
45	N/A Sep.	DECAL- WARNING: ELECTROCUTION (SEE 34-9036)	1
46	43-0085	KEY	1
47	19-0225	AIR FILTER ASSEMBLY	1
48	19-0226	FILTER REPLACEMENT	1
49	27-0066	BOLT	2
50	33-0425	SPACER	2
51	20-0813A01	SUPPORT BRACKET	1

<b>Id</b>	<b>Item #</b>	<b>Description</b>	<b>Quantity</b>
52	27-0131	BOLT	2
53	N/A Sep.	DECAL- WARNING: BELTGUARD (SEE 34-9036)	1
54	33-0020	EDGING *(THREE FEET REQUIRED)	1
55	11-0063	DRIVE BELT	1
56	11-0065	DRIVE BELT	1
57	10-0030	SHEAVE	1
58	9-0005	BUSHING	1
59	27-0015	BOLT	4
60	33-0020	EDGING *(FIVE FEET REQUIRED)	1
61	6-0103A01	BELTGUARD COVER	1
62	33-0197	FASTENER	2
63	N/A Sep.	DECAL- WARNING CARBON MONOXIDE (SEE 34-9036)	1
64	N/A Sep.	DECAL- OPERATING INSTRUCTIONS (SEE 34-9036)	1
65	9-0033	BUSHING	1
66	10-0099	SHEAVE	1
67	27-9524	BOLT	3
68	6-0102A01	BELTGUARD BACK ASSEMBLY	1
69	24-0175	NIPPLE	2
70	22-0231	ADJUSTABLE REGULATOR	1
71	22-0271	PRESSURE GAUGE	2
72	23-0111	REDUCER	2
73	17-0068	QUICK CONNECT SOCKET	1
74	51-0033	MANIFOLD BLOCK	2
75	30-0155	LOCKNUT	4
76	24-0034	PLUG	1
77	23-0105	HOSE BARB	1
78	23-0017	BUSHING	1
79	22-0267	SAFETY RELIEF VALVE	1
	34-9036	SAFETY DECAL KIT (INC. 2-4, 9, 15, 16, 26, 38, 44, 45, 56, 65)	
		*MUST ORDER IN ONE FOOT LENGTHS	



AG2-PH13-08M / AG2-PH13-08M (sn:0-99999999)

## PUMP ASSEMBLY



Id	Item #	Description	Quantity
1	23-0118	ELBOW	1
2	27-0576	BOLT	6
3	27-9559	SCREW	1
4	N/A Sep.	FLAT WASHER (SEE 70-0364 OR 70-0371)	2
5	27-9558	SCREW	1
6	46-1119	CYLINDER HEAD	1
7	23-0316	ELBOW	2
8	22-0362	LOW PRESSURE SAFETY VALVE	1
9	46-1094	VALVE PLATE (INC. 11-18)	1
10	N/A Sep.	VALVE PLATE GASKET (SEE 70-0361 OR 70-0366)	1
11	27-9561	SCREW	12
12	N/A Sep.	VALVE STOP 1 (SEE 46-1094 OR 70-0366)	2
13	N/A Sep.	VALVE 1 (SEE 46-1094 OR 70-0366)	2
14	N/A Sep.	VALVE STOP 2 (SEE 46-1094 OR 70-0366)	2

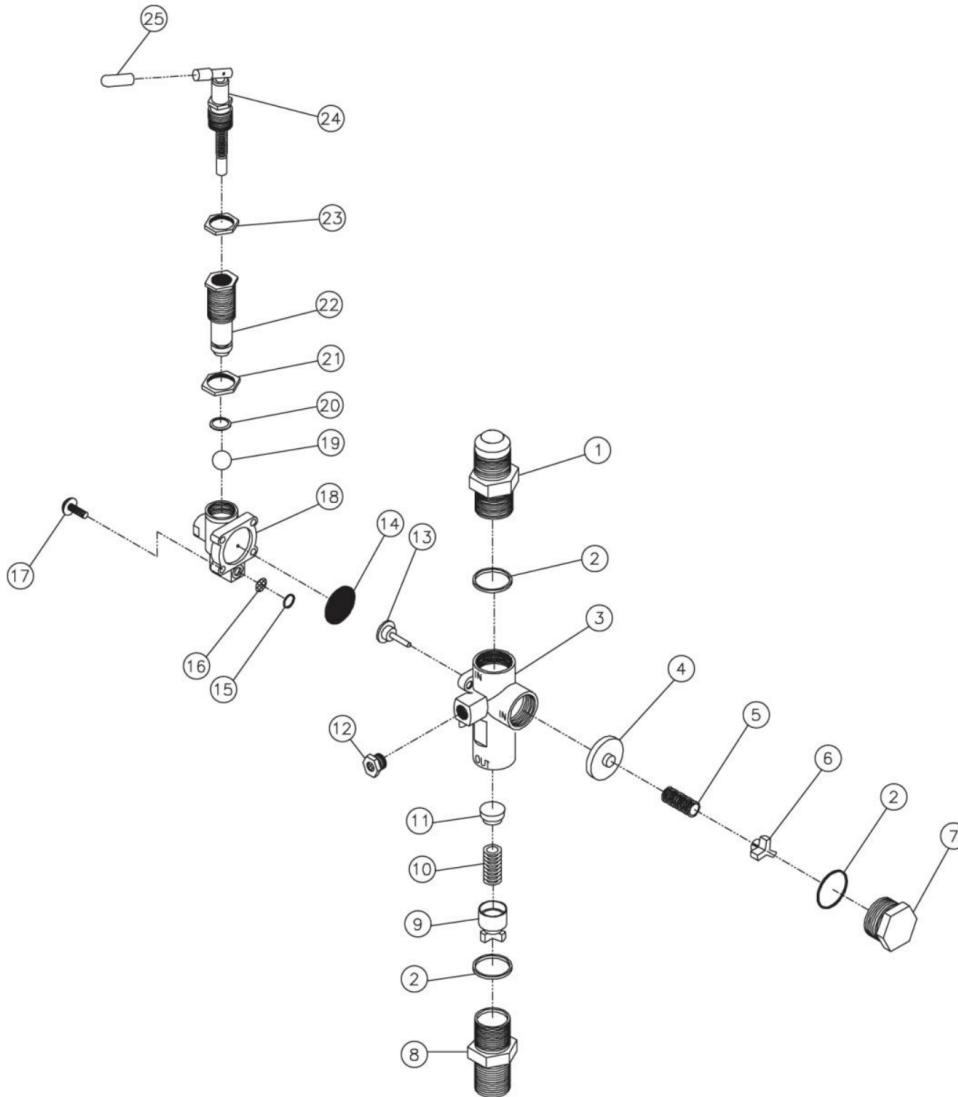
<b>Id</b>	<b>Item #</b>	<b>Description</b>	<b>Quantity</b>
15	N/A Sep.	VALVE 2 (SEE 46-1094 OR 70-0366)	2
16	N/A Sep.	VALVE PLATE (SEE 46-1094)	1
17	N/A Sep.	VALVE 3 (SEE 46-1094 OR 70-0366)	1
18	N/A Sep.	VALVE 4 (SEE 46-1094 OR 70-0366)	1
19	N/A Sep.	VALVE PLATE GASKET (SEE 70-0361 OR 70-0366)	1
20	46-1120	CYLINDER	1
21	27-0117	BOLT	6
22	22-0361	HIGH PRESSURE SAFETY VALVE	1
23	N/A Sep.	CRANKCASE GASKET (SEE 70-0361)	1
24	33-0415	CRANKCASE BREATHER TUBE	1
25	46-1121	OIL FILL PLUG	1
26	24-0009	PLUG	1
27	46-1098	OIL SIGHT GLASS	1
28	46-1122	CRANKCASE	1
29	48-0081	BEARING	1
30	46-1123	CRANKSHAFT	1
31	43-0112	KEY	1
32	48-0082	BEARING	1
33	N/A Sep.	FLANGE GASKET (SEE 70-0361)	1
34	38-0062	FLANGE	1
35	29-0007	LOCKWASHER	3
36	27-0067	BOLT	2
37	26-0274	OIL SEAL	1
38	10-0124	FLYWHEEL	1
39	N/A	WASHER	1
40	N/A	NUT	1
41	70-0381	CONNECTING ROD	1
42	N/A Sep.	CONNECTING ROD CAP (SEE 70-0381)	1
43	N/A Sep.	CONNECTING ROD GUIDE BUSHING (SEE 70-0381 OR 70-0382)	4
44	N/A Sep.	CONNECTING ROD (SEE 70-0381)	1
45	N/A Sep.	BOLT (SEE 70-0381 OR 70-0382)	4
46	46-1101	PISTON	1
47	70-0362	RING KIT	1
48	70-0382	LOW PRESSURE CONNECTING ROD KIT	1
49	N/A Sep.	LOW PRESSURE ROD CAP (SEE 70-0382)	1
50	N/A Sep.	LOW PRESSURE ROD (SEE 70-0382)	1
51	9-0078	SPACER BUSHING	2
52	46-1102	PISTON	1
53	70-0363	RING KIT	1

<b>Id</b>	<b>Item #</b>	<b>Description</b>	<b>Quantity</b>
54	70-0370	INTERCOOLER KIT	1
55	N/A Sep.	LOCKWASHER (SEE 70-0365 OR 70-0370)	1
56	30-6001	NUT	1
57	27-0068	BOLT	1
58	N/A Sep.	INTERCOOLER BRACKET ASSEMBLY (SEE 70-0370)	1
59	N/A Sep.	INTERCOOLER (SEE 70-0370)	1
60	23-0430	ELBOW	2
61	N/A Sep.	INTERCOOLER CLAMP ASSEMBLY (SEE 70-0365 OR 70-0370)	1
62	27-8805	SCREW	1
KIT	70-0361	GASKET (INC. 10, 19, 23, 33)	
KIT	70-0362	RING (INC. 47)	
KIT	70-0363	RING (INC. 53)	
KIT	70-0365	BRACKET ASSEMBLY (INC. 55-56, 61-62)	
KIT	70-0366	GASKET VALVE (INC. 10-15, 17-19)	
KIT	70-0370	INTERCOOLER (INC. 55-56, 58-62)	
KIT	70-0382	LOW PRESSURE CONNECTING ROD (INC. 43, 45, 49, 50)	
KIT	70-0381	HIGH PRESSURE CONNECTING ROD (INC. 42-45)	



AG2-PH13-08M / AG2-PH13-08M (sn:0-99999999)

## PILOT VALVE



Id	Item #	Description	Quantity
1	N/A	INLET PORT FITTING	1
2	N/A Sep.	O-RING (SEE 70-0241)	3
3	N/A	MAIN BODY	1
4	N/A Sep.	PISTON ASSEMBLY-UNLOADER VALVE (SEE 70-0241)	1
5	N/A Sep.	SPRING-UNLOADER VALVE (SEE 70-0241)	1
6	N/A	SPRING SEAT-UNLOADER VALVE	1
7	N/A	CAP	1

<b>Id</b>	<b>Item #</b>	<b>Description</b>	<b>Quantity</b>
8	N/A	DISCHARGE PORT FITTING	1
9	N/A	SPRING SEAT ASSEMBLY-CHECK VALVE	1
10	N/A Sep.	SPRING-CHECK VALVE (SEE 70-0241)	1
11	N/A Sep.	PISTON-CHECK VALVE (SEE 70-0241)	1
12	23-0419	MUFFLER	1
13	N/A Sep.	STEM UNLOADER (SEE 70-0241)	1
14	N/A Sep.	DIAPHRAM (SEE 70-0241)	1
15	N/A Sep.	O-RING (SEE 70-0241)	1
16	N/A Sep.	SCREEN (SEE 70-0241)	1
17	N/A	SCREW W/WASHER	4
18	N/A	PILOT BODY	1
19	N/A Sep.	BALL (SEE 70-0241)	1
20	N/A Sep.	O-RING (SEE 70-0241)	1
21	N/A	DIFFERENTIAL ADJUSTING LOCKNUT	1
22	N/A	DIFFERENTIAL ADJUSTING NUT	1
23	N/A	PRESSURE ADJUSTING LOCKNUT	1
24	N/A Sep.	PRESSURE ADJUSTING TOGGLE ASSEMBLY (SEE 70-0241)	1
25	N/A	RED TOGGLE COVER	1
KIT	70-0241	REPAIR KIT (INC. 2 EACH 4-5, 10-11, 13-16, 19-20, 24; INC. 3 EACH 2)	