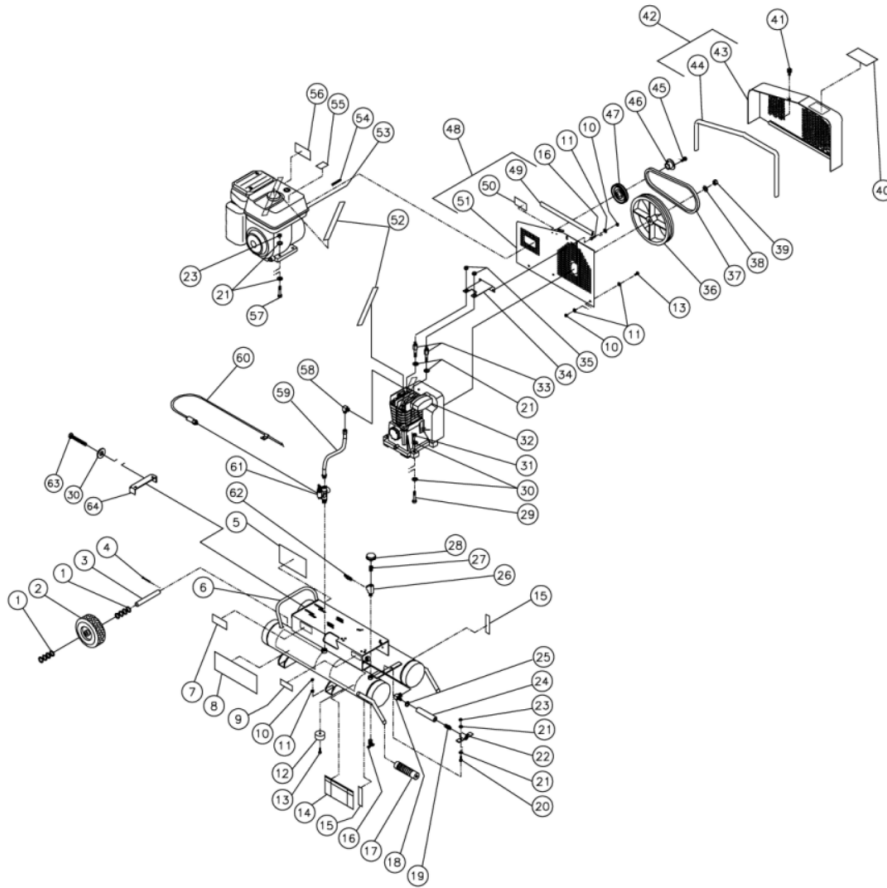




AP1-PV06-08M / AP1-PV06-08M (sn:20005741-99999999)

FRAME ASSEMBLY



Id	Item #	Description	Quantity	Rev	Comments
1	28-0008	WASHER	8		
2	14-0080	WHEEL	1		
3	20-0420	AXLE	1		
4	43-0092	COTTER PIN	2		

Id	Item #	Description	Quantity	Rev	Comments
5	34-0817	DECAL-MAINTENANCE INSTRUCTIONS	1		
6	854-0027	AIR TANK ASSEMBLY (INC. 9, 14, 15)	1		
7	N/A	DECAL-DATA PLATE	1		
8	34-1123	DECAL- JOB PRO	1		
9	34-0823	DECAL- WARNING: HOT SURFACE	1		
10	30-0155	LOCKNUT	9		
11	28-0002	WASHER	12		
12	14-0069	ISOLATOR	4		
13	27-0015	BOLT	9		
14	34-0819	DECAL-DANGER/WARNING/CAUTION	1		
15	34-0815	DECAL-DRAIN TANK	2		
16	23-0312	DRAIN VALVE	2		
17	7-0143	HANDLE GRIPS	2		
18	23-0418	ELBOW	1		
19	23-0105	HOSE BARB	1		
20	27-0067	BOLT	2		
21	28-0003	WASHER	14		
22	20-0421A01	REGULATOR MOUNTING BRACKET	1		
23	30-0157	LOCKNUT	6		
24	15-0007	HOSE *(ONE FOOT REQUIRED)	1		
25	42-0011	HOSE CLAMP	2		
26	23-0127	STREET TEE	1		
27	23-0111	ADAPTER	1		
28	22-0257	PRESSURE GAUGE	1		
29	27-0121	BOLT	4		
30	28-0023	WASHER	8		
31	30-0159	LOCKNUT	4		
32	3-0172	COMPRESSOR	1		
33	27-8909	BOLT	2		
34	20-0436A01	BELTGUARD BRACKET	1		
35	30-3023	NUT	2		
36	10-0090	FLYWHEEL (W/COMPRESSOR)	1		
37	11-0011	DRIVE BELT	1		
38	28-1032	FLATWASHER FLYWHEEL (W/COMPRESSOR)	1		
39	27-8910	BOLT (W/COMPRESSOR)	1		
40	34-0821	DECAL- OPERATING INSTRUCTIONS	1		
41	33-0197	FASTENER	1		
42	854-0009	BELTGUARD ASSEMBLY (INC. 43, 44)	1		
43	N/A Sep.	BELTGUARD COVER (SEE 854-0009)	1		

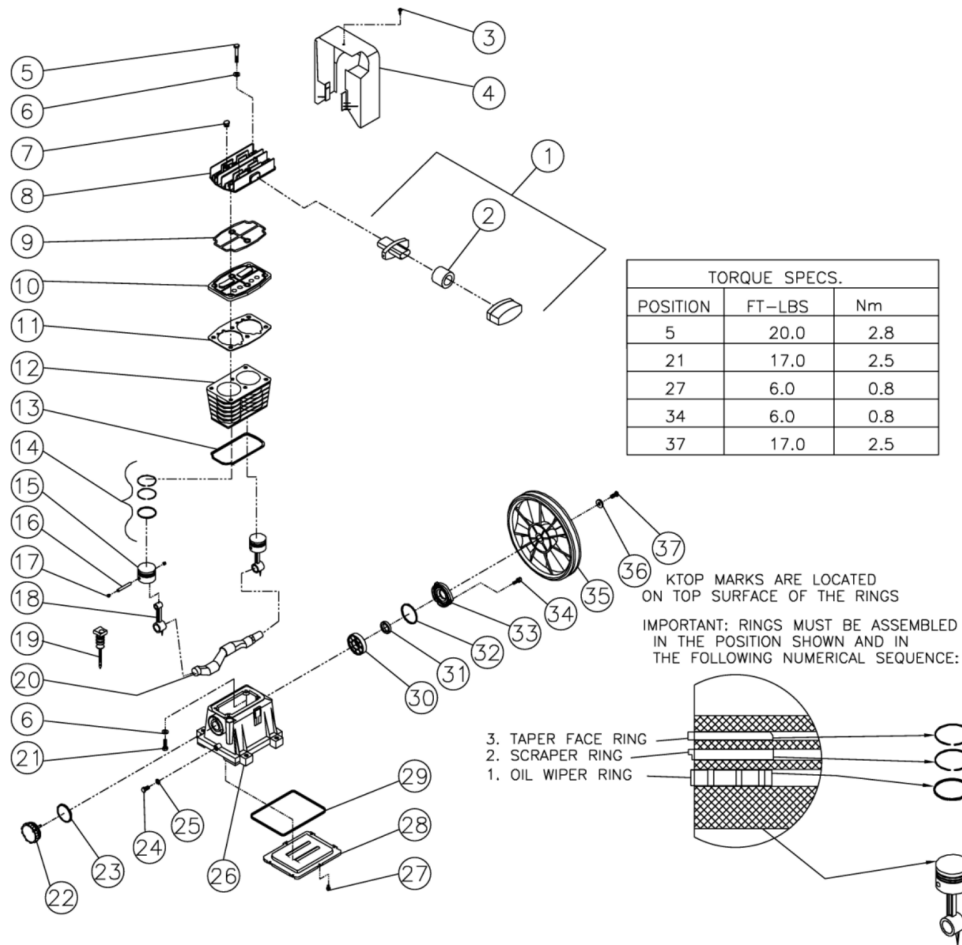
Id	Item #	Description	Quantity	Rev	Comments
44	33-0020	EDGING *(FOUR FEET REQUIRED)	1		
45	27-0015	BOLT W/BUSHING	2		
46	9-0009	BUSHING	1		
47	10-0105	DRIVE PULLEY	1		
48	854-0007	BELTGUARD BACK ASSEMBLY (INC. 49-51)	1		
49	33-0020	EDGING *(TWO FEET REQUIRED)	1		
50	34-0575	DECAL- WARNING: BELTGUARD IN PLACE	1		
51	N/A Sep.	BELTGUARD BACK (SEE 854-0007)	1		
52	34-0816	DECAL- CHECK OIL	1		
53	1-0069	ENGINE- 6.0 H.P. VANGUARD	1		
54	43-0073	KEY	1		
55	34-0588	DECAL- ENGINE FUEL	1		
56	34-0130	DECAL- WARNING: MUFFLER HOT	1		
57	27-0070	BOLT	4		
58	23-0426	ELBOW	1		
59	15-0235	HOSE	1		
60	33-0354	THROTTLE CONTROL	1		
61	22-0346	PILOT VALVE	1		
62	22-0228	SAFETY RELIEF VALVE	1		
63	27-0576	BOLT	1		
64	20-0614A01	BELT TENSIONER PLATE	1		

*MUST ORDER IN ONE FOOT LENGTHS



AP1-PV06-08M / AP1-PV06-08M (sn:20005741-99999999)

COMPRESSOR PUMP



Id	Item #	Description	Quantity	Rev	Comments
1	19-0078	AIR FILTER ASSEMBLY	1		
2	19-0080	FILTER ELEMENT	1		
3	27-8917	SCREW	1		
4	62-0109	AIR CONVEYOR	1		
5	27-8918	BOLT	6		
6	28-0210	WASHER	10		
7	39-0101	PLUG	1		
8	46-0780	HEAD	1		
9	25-0518	GASKET	1		
10	22-0331	VALVE PLATE ASSEMBLY	1		

Id	Item #	Description	Quantity	Rev	Comments
11	26-0249	CYLINDER GASKET	1		
12	46-0781	CYLINDER	1		
13	N/A	O-RING	1		
14	70-0220	RING SET KIT	2		
15	N/A	PISTON	2		
16	N/A	WRIST PIN	2		
17	N/A	SNAP RING	4		
18	N/A	CONNECTING ROD	2		
19	46-0782	OIL DIPSTICK	1		
20	N/A	CRANKSHAFT	1		
21	27-8033	BOLT	4		
22	46-0783	END CAP	1		
23	N/A	O-RING	1		
24	27-8032	BOLT	1		
25	26-0204	GASKET	1		
26	N/A	CRANKCASE	1		
27	27-8803	BOLT	6		
28	N/A	OIL PAN	1		
29	N/A	O-RING	1		
30	48-0060	BEARING	1		
31	26-0205	OIL SEAL	1		
32	N/A	O-RING	1		
33	46-0784	END CAP OPEN	1		
34	27-8002	BOLT	3		
35	10-0090	FLYWHEEL	1		
36	28-1032	WASHER	1		
37	27-8910	BOLT	1		
	854-0058	VALVE PLATE KIT (INC. 9-11)			
	70-0269	GASKET KIT (INC. 9, 11, 13, 23, 29, 32)			