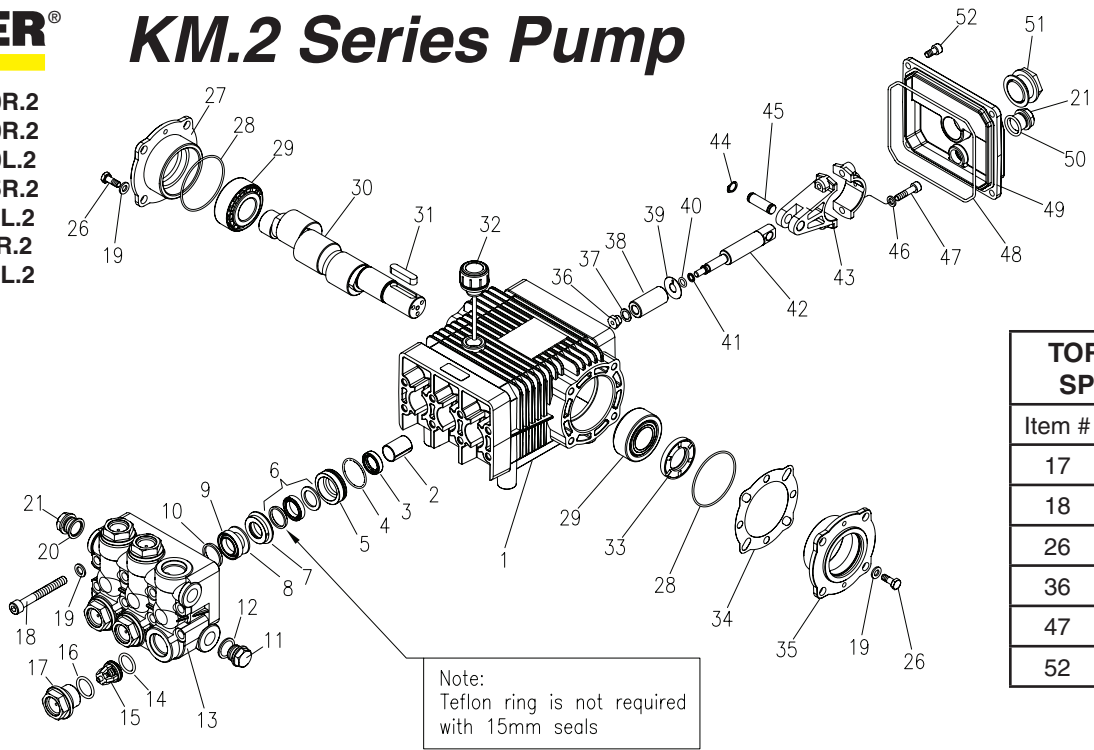


KM.2 Series Pump

- 8.904-689.0 KM3540R.2
- 9.803-405.0 KM4030R.2
- 9.803-406.0 KM4030L.2
- 9.802-343.0 KM4035R.2
- 9.803-407.0 KM4035L.2
- 9.802-342.0 KM5030R.2
- 9.803-408.0 KM5030L.2



TORQUE SPECS	
Item #	Ft.-lbs
17	75
18	30
26	8
36	7
47	13
52	7.6

PARTS LIST

ITEM	PART NO.	DESCRIPTION	QTY	ITEM	PART NO.	DESCRIPTION	QTY	ITEM	PART NO.	DESCRIPTION	QTY
1	8.933-012.0	Crankcase	1	26	9.802-944.0	Hexagonal Screw	8	42	9.803-144.0	Plunger Rod	3
2	9.803-196.0	Plunger Guide	3	27	8.717-210.0	Closed Bearing Housing	1	43	9.803-158.0	Connecting Rod	3
3*	See Kits Below	Plunger Oil Seal	3	28	9.803-192.0	O-Ring Ø1.78 x 60.05	2	44	9.802-913.0	Snap Ring	6
4*	See Kits Below	O-Ring Ø1.78 x 31.47	3	29	8.933-011.0	Tapered Roller Bearing	2	45	9.802-916.0	Connecting Rod Pin	3
5*	See Kits Below	Pressure Ring	3	30	9.803-146.0	Crankshaft (5030,3540)	1	46	9.803-218.0	Spring Washer	6
6*	See Kits Below	U-Seal	3		9.803-147.0	Crankshaft (4030,4035)	1	47	9.803-238.0	Connecting Rod Screw	6
7*	See Kits Below	Intermediate Ring	3	31	9.803-167.0	Crankshaft Key	1	48	8.933-016.0	O-Ring, Ø2.62 x 126.67	1
8*	See Kits Below	Back-up Ring	3	32	9.802-921.0	Oil Dip Stick	1	49	9.803-165.0	Crankcase Cover	1
9*	See Kits Below	U-Seal	3	33	9.803-140.0	Crankshaft Seal	1	50	9.803-197.0	O-Ring, Ø1.78 x 14	1
10*	See Kits Below	Support Ring	3	34	9.803-178.0	Shim	2	51	9.803-202.0	Sight Glass 3/4	1
13	9.802-932.0	Manifold Head	1	35	8.717-209.0	Bearing Housing	1	52	9.802-939.0	Cover Screw	5
14*	See Kits Below	O-Ring Ø2.62 x 17.13	6	36*	See Kits Below	Plunger Bolt	3				
15*	See Kits Below	Valve Assembly	6	37*	See Kits Below	Copper Spacer	3				
16*	See Kits Below	O-Ring Ø2.62 x 20.29	6	38*	See Kits Below	O-Ring Ø1.78 x 7.66	3				
17	9.802-928.0	Valve Plug	6	39*	See Kits Below	Teflon Ring	3				
18	9.802-938.0	Manifold Stud Bolt	8	40*	See Kits Below	Plunger (4035)	3				
19	9.802-884.0	Washer	16		See Kits Below	Plunger (4030, 5030)	3				
20	9.803-198.0	Copper Washer 3/8	1		See Kits Below	Plunger (3540)	3				
21	9.802-925.0	Brass Plug 3/8	1	41*	See Kits Below	Copper Spacer	3				

* Available in kit (See below)

REPAIR KITS

REPAIR KIT NO.	8.725-360.0	8.725-362.0	8.725-358.0	8.725-361.0	8.725-363.0	8.725-359.0	9.802-629.0	9.802-620.0	8.933-023.0	9.802-603.0	9.802-609.0
KIT DESCRIPTION	Plunger Seal 4035 18mm	Plunger Seal 4030 20mm	Plunger Seal 3540 15mm	Complete Seal Packing 4035 18mm	Complete Seal Packing 5030 20mm	Complete Seal Packing 3540 15mm	Plunger 4035 18mm	Plunger 4030 20mm	Plunger 3540 15mm	Complete Valve	Plunger Oil Seals
ITEM NUMBERS INCLUDED	4, 6, 8, 9, 10	4, 6, 8, 9, 10	4, 6, 8, 9, 10	4, 5, 6, 7, 8, 9, 10	4, 5, 6, 7, 8, 9, 10	4, 5, 6, 7, 8, 9, 10	36, 37, 38, 39, 40, 41	36, 37, 38, 39, 40, 41	36, 37, 38, 39, 40, 41	14, 15, 16	3
NO. OF CYLINDERS KIT WILL SERVICE	3	3	3	1	1	1		1	1	6	3