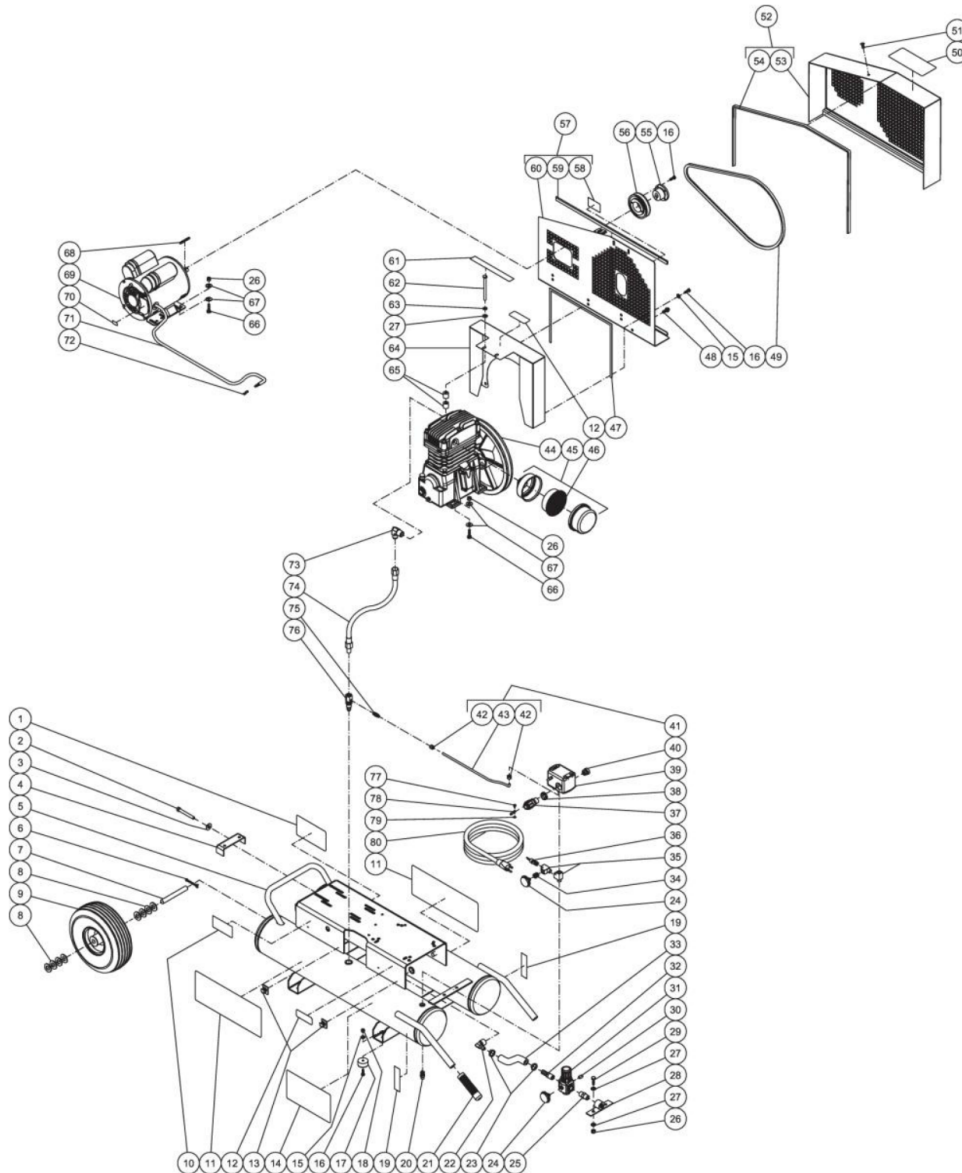




AS1-PE03-08M / AS1-PE03-08M (sn:0-99999999)

FRAME ASSEMBLY



Id	Item #	Description	Quantity	Rev	Comments
1	N/A Sep.	DECAL- MAINTENANCE INSTRUCTIONS (SEE 34-9016)	1		
2	27-0576	BOLT	1		
3	28-0023	WASHER	1		
4	20-0614A01	BELT TENSIONER PLATE	1		
5	N/A	AIR TANK ASSEMBLY	1		
6	43-0092	COTTER PIN	2		

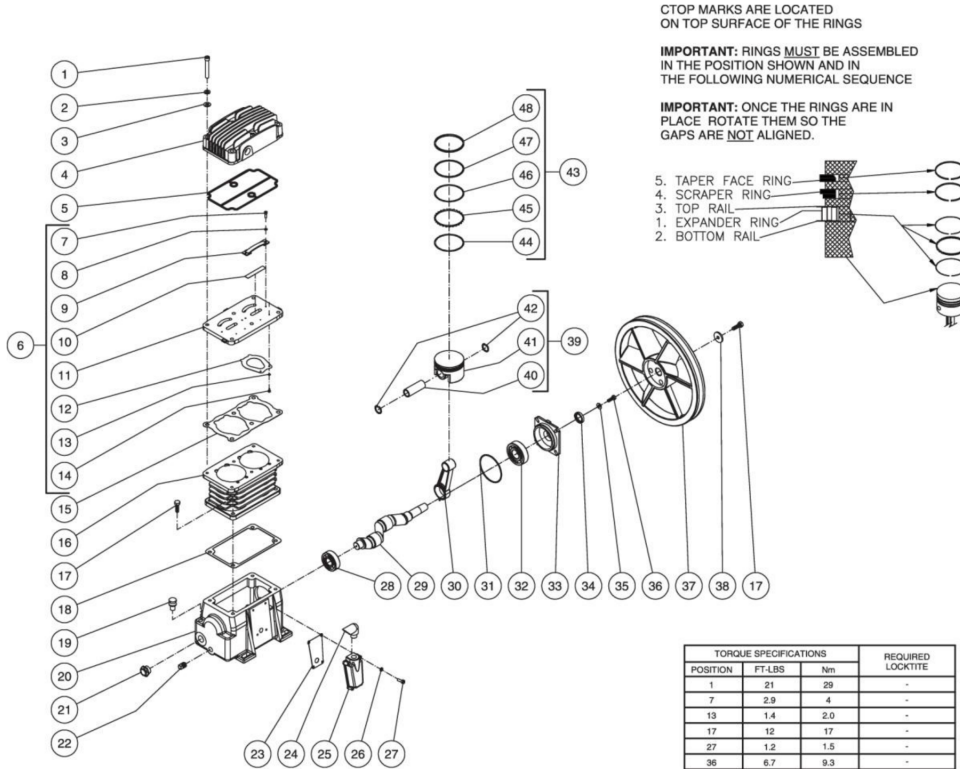
Id	Item #	Description	Quantity	Rev	Comments
7	20-0420	AXLE	1		
8	28-0008	WASHER	8		
9	14-0017	WHEEL	1		
10	N/A	DECAL- DATA PLATE	1		
11	34-0814	DECAL- MI-T-M	2		
12	N/A Sep.	DECAL- WARNING: HOT SURFACE (SEE 34-9016)	2		
13	33-0264	WIRE CLIPS	2		
14	N/A Sep.	DECAL- DANGER/WARNING/CAUTION (SEE 34-9016)	1		
15	28-0002	WASHER	8		
16	27-0015	BOLT	10		
17	14-0069	ISOLATOR	4		
18	30-0155	LOCKNUT	4		
19	N/A Sep.	DECAL- DRAIN TANK (SEE 34-9016)	2		
20	23-0312	PETCOCK	2		
21	7-0143	HANDLE GRIPS	2		
22	23-0418	ELBOW	1		
23	42-0011	HOSE CLAMP	2		
24	22-0271	PRESSURE GAUGE	2		
25	24-0010	NIPPLE	1		
26	30-0157	LOCKNUT	10		
27	28-0003	WASHER	6		
28	20-0421A01	REGULATOR MOUNTING BRACKET	1		
29	27-0067	BOLT	2		
30	24-0082	REGULATOR PLUG	1		
31	22-0231	ADJUSTABLE REGULATOR- 150 PSI	1		
32	23-0105	HOSE BARB	1		
33	15-0007	HOSE *(ONE FOOT REQUIRED)	1		
34	23-0111	ADAPTER	1		
35	23-0127	STREET TEE	2		
36	22-0228	SAFETY RELIEF VALVE	1		
37	32-0766	CORD STRAIN RELIEF	1		
38	32-0108	LOCKNUT	1		
39	22-0312	PRESSURE SWITCH	1		
40	9-0045	CORD RELIEF	1		
41	854-0022	TUBE ASSEMBLY (INC. 42-43)	1		
42	23-0315	COMPRESSION NUT	2		
43	54-0034	COPPER TUBE *(TWO FEET REQUIRED)	1		
44	3-0280	PUMP	1		
45	19-0240	AIR FILTER ASSEMBLY (INC. 46)	1		

Id	Item #	Description	Quantity	Rev	Comments
46	19-0220	FILTER REPLACEMENT	1		
47	26-0240	GASKET	1		
48	27-9524	BOLT	3		
49	11-0039	DRIVE BELT	1		
50	N/A Sep.	DECAL- OPERATING INSTRUCTIONS (SEE 34-9016)	1		
51	33-0197	FASTENER	1		
52	854-0009	BELTGUARD ASSEMBLY (INC. 53-54)	1		
53	N/A Sep.	BELTGUARD COVER (SEE 854-0009)	1		
54	33-0020	EDGING *(FOUR FEET REQUIRED)	1		
55	9-0037	BUSHING	1		
56	10-0129	SHEAVE	1		
57	854-0007	BELTGUARD BACK ASSEMBLY (INC. 58-60)	1		
58	N/A Sep.	DECAL- WARNING:BELTGUARD IN PLACE (SEE 34-9016)	1		
59	33-0020	EDGING *(TWO FEET REQUIRED)	1		
60	N/A Sep.	BELTGUARD BACK (SEE 854-0007)	1		
61	N/A Sep.	DECAL- CHECK OIL TAPE (SEE 34-9016)	1		
62	27-0079	BOLT	2		
63	29-0007	LOCKWASHER	2		
64	20-0916A01	AIR SHROUD	1		
65	33-0358	SPACER	4		
66	27-0068	BOLT	8		
67	28-0022	WASHER	16		
68	43-0073	KEY	1		
69	2-0138	MOTOR- 3.0 H.P.	1		
70	N/A Sep.	DECAL- 115 VOLT (SEE 34-9016)	1		
71	32-0445	CORD *(THREE FEET REQUIRED)	1		
72	32-0003	TERMINAL	6		
73	24-0074	ELBOW	1		
74	15-0236	HOSE	1		
75	23-0328	ADAPTER	1		
76	22-0334	CHECK VALVE	1		
77	27-8933	SCREW	1		
78	32-0099	TERMINAL	3		
79	28-1009	LOCKWASHER	3		
80	32-0755	CORD PLUG SET	1		
	34-9016	SAFETY DECAL KIT (INC. 1, 12, 14, 19, 50, 58, 61, 70)			
		*MUST ORDER IN ONE FOOT LENGTHS			



AS1-PE03-08M / AS1-PE03-08M (sn:0-99999999)

COMPRESSOR PUMP



Id	Item #	Description	Quantity	Rev	Comments
1	27-0827	BOLT	6		
2	29-0007	LOCKWASHER	6		
3	28-0003	WASHER	6		
4	46-1236	CYLINDER HEAD	1		
5	N/A Sep.	GASKET (SEE 70-0453)	1		
6	70-0454	VALVE PLATE KIT (INC. 7-14)	1		
7	N/A Sep.	BOLT (SEE 70-0454)	4		
8	N/A Sep.	WASHER (SEE 70-0454)	4		
9	N/A Sep.	VALVE STOP (SEE 70-0454)	2		
10	N/A Sep.	OUTLET REED VALVE (SEE 70-0454)	2		
11	46-1235	VALVE PLATE	1		
12	N/A Sep.	INLET REED VALVE (SEE 70-0454)	2		
13	N/A Sep.	WASHER (SEE 70-0454)	4		

Id	Item #	Description	Quantity	Rev	Comments
14	N/A Sep.	VALVE SCREW (SEE 70-0454)	4		
15	N/A Sep.	GASKET (SEE 70-0453 OR 70-0454)	1		
16	46-1234	CYLINDER	1		
17	27-0067	BOLT	5		
18	N/A Sep.	CRANKCASE GASKET (SEE 70-0453)	1		
19	46-1144	OIL FILL PLUG	1		
20	46-1233	CRANKCASE	1		
21	46-1145	OIL SIGHT GLASS	1		
22	24-0009	PLUG	1		
23	26-0292	LABYRINTH COVER GASKET	1		
24	46-1241	LABYRINTH COVER ELBOW	1		
25	46-1242	LABYRINTH COVER	1		
26	28-1009	LOCKWASHER	4		
27	27-8885	BOLT	4		
28	48-0086	BALL BEARING	1		
29	46-1237	CRANKSHAFT	1		
30	46-1239	CONNECTING ROD	2		
31	N/A Sep.	O-RING (SEE 70-0453)	1		
32	48-0087	BALL BEARING	1		
33	46-1240	FLANGE	1		
34	26-0246	OIL SEAL SHAFT	1		
35	28-0002	WASHER	4		
36	27-0015	BOLT	4		
37	10-0136	SHEAVE	1		
38	N/A	WASHER	1		
39	46-1238	PISTON ASSEMBLY (INC. 40-42)	1		
40	N/A Sep.	WRIST PIN (SEE 46-1237 OR 46-1238)	2		
41	N/A Sep.	PISTON (SEE 46-1237 OR 46-1238)	2		
42	N/A Sep.	SNAP RING (SEE 46-1237 OR 46-1238)	4		
43	70-0452	RING KIT (INC. 44-48)	1		
44	N/A Sep.	BOTTOM RAIL (SEE 70-0452)	2		
45	N/A Sep.	ENPANDER RING (SEE 70-0452)	2		
46	N/A Sep.	TOP RAIL (SEE 70-0452)	2		
47	N/A Sep.	PISTON RING SCRAPER (SEE 70-0452)	2		
48	N/A Sep.	PISTON RING TAPER FACE (SEE 70-0452)	2		
KIT	70-0454	VALVE PLATE (INC. 7-14)			
KIT	70-0453	GASKET (INC. 5, 15, 18, 31)			
KIT	46-1237	PISTON ASSEMBLY (INC. 40-42)			
KIT	70-0452	PISTON RINGS (INC. 44-48)			

