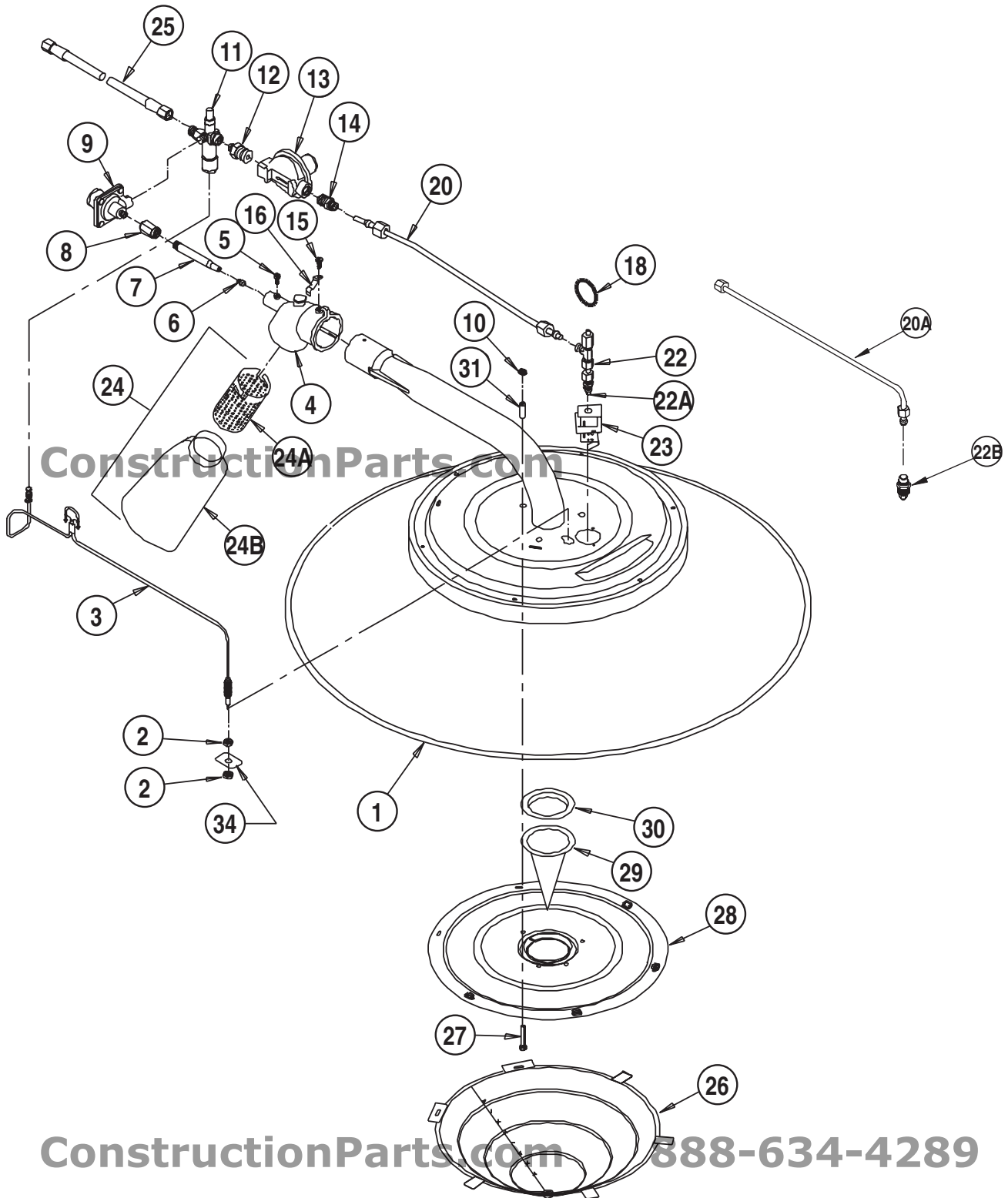


# Parts Identification

InfraConic I-34 P  
Model I-34D

888-634-4289

## PARTS SCHEMATIC



ConstructionParts.com 888-634-4289

**PARTS LIST**

<b>Item</b>	<b>Description</b>	<b>Part Number</b>
1	Venturi Tube & Burner Assembly	20671
2	Thermocouple Retaining Nut	09576
3	Thermocouple w/ Fusible Link	09596
4	Injector Body w/ Register Plate	Propane Gas 20672 Natural Gas 21559
5	Screw, Injector Tube	09572
6	Burner Orifice	Propane Gas 20537 Natural Gas 21000
7	Injector Tube	09562
8	Adapter, Injector Tube to Pressure Switch	20513
9	Pressure Switch	20669
10	Nut	09578
11	Pilot Safety Control Valve	22285
12	Adapter, Pilot Control to Pilot Regulator	Propane Gas 20514 Natural Gas 21054
13	Pilot Relight Valve	20670
14	Adapter, 1/4 NPT x 1/4 Compression	02770
15	Screw, Control Assembly & Thermocouple	09575
16	Thermocouple Fuse Clip	09565
18	Key Ring	09620
20	Pilot Tubing w/ Nuts & Sleeves (For Heaters with Pilot Clean-Out)	23918
20A	Pilot Tubing w/ Nuts & Sleeves (For Heaters with Standard Pilot Orifice)	23916
22	Pilot Clean-Out w/ Pilot Orifice (InstaClear™)	Propane Gas 22690 Natural Gas 22691
22A	Orifice, Pilot (For InstaClear™ Pilot Clean-Out and Standard Pilot)	Propane Gas 22672 Natural Gas 22673
22B	Orifice Holder w/ Orifice (For Standard Pilot Light)	Propane Gas 23071 Natural Gas 23072
23	Pilot Bracket	Propane Gas 23307 Natural Gas 23304
24	Filter Kit	20428
24A	Sleeve	20421
24B	Filter	20429
25	Hose, 1/4 in x 6 ft., Rigid x Swivel - Poultry	20495
	1/4 in x 10 ft., Rigid x Swivel - Poultry	20496
	1/4 in x 12 ft., Rigid x Swivel - Poultry	20497
	1/4 in x 6 ft, Swivel Both Ends - Swine	20499
	1/4 in x 10 ft., Swivel Both Ends - Swine	20242
	1/4 in x 15 ft., Swivel Both Ends - Swine	20500
26	Outer Cone	09556
27	Screw, 10-32 x 1 1/2 in.	23636
28	Plate, Burner	22212-02
29	Inner Cone	09557
30	Gasket	09560
31	Spacer	09568
33	Combustion Cone Kit w/ Gasket	21088
34	Cover Plate, Thermocouple	23315
35	Fitting Kit, 1/8 NPT w/ Nut (Not Illustrated)	23406
36	Quick Coupling Kit, Female Coupling and Shut-Off (Not Illustrated)	21335
	Consisting Of:	
	Shut-off Valve	05548
	Nipple, 1/4 in. Close	01142
	Coupling, Quick Disconnect	21328
	Bushing, 1/2 x 1/4	01519