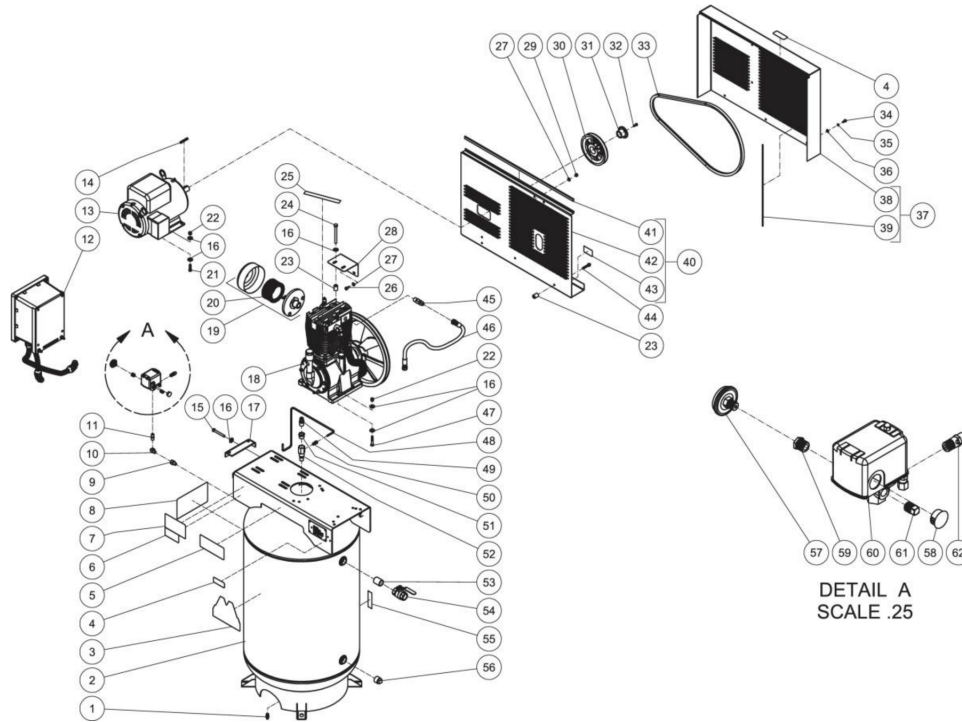




AM2-S305-80M / AM2-S305-80M (sn:20093139-99999999)

## TANK ASSEMBLY



Id	Item #	Description	Quantity
1	23-0312	PETCOCK	1
2	12-0203A01	TANK ASSEMBLY	1
3	34-2170	DECAL - MI-T-M	1
4	N/A	DECAL - RISK OF BURNS (SEE 34-9016)	2
5	N/A	DECAL - OPERATING INSTRUCTIONS (SEE 34-9016)	1
6	N/A	DECAL- DATA PLATE	1
7	N/A	DECAL - MAINTENANCE INSTRUCTIONS (SEE 34-9016)	1
8	N/A	DECAL - CAUTION/WARNING/DANGER (SEE 34-9016)	1
9	23-0126	ADAPTER	1
10	23-0014	ELBOW	1
11	24-0145	NIPPLE	1
12	AX-0058	STARTER OPTION (230V/1 PHASE)	1
12	AX-0059	STARTER OPTION (200V/3 PHASE)	1
12	AX-0060	STARTER OPTION (230V/3 PHASE)	1

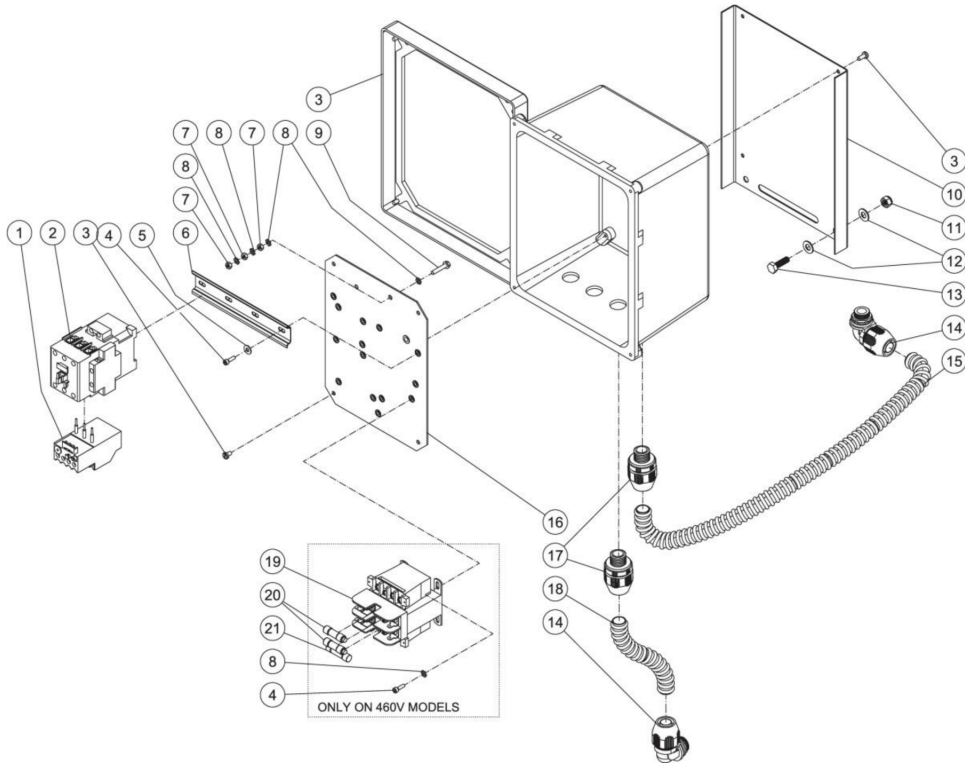
<b>Id</b>	<b>Item #</b>	<b>Description</b>	<b>Quantity</b>
12	AX-0061	STARTER OPTION (460V/3 PHASE)	1
13	2-0173	MOTOR (230V/1 PHASE)	1
13	2-0177	MOTOR (200V/3 PHASE)	1
13	2-0175	MOTOR (230V/3 PHASE, 460V/3 PHASE)	1
14	43-0078	KEY	1
15	27-0576	BOLT	2
16	28-0023	WASHER	20
17	20-1036A01	BELT TENSIONER PLATE	1
18	3-0298	PUMP	1
19	19-0237	FILTER CANISTER	1
20	19-0226	AIR FILTER	1
21	27-0118	BOLT	4
22	30-0159	LOCKNUT	8
23	33-0425	SPACER	5
24	27-8071	BOLT	2
25	N/A	DECAL - CHECK OIL (SEE 34-9016)	1
26	27-0066	BOLT	3
27	28-0003	WASHER	6
28	13-0196A01	BELTGUARD STABILIZER	1
29	30-0157	LOCKNUT	3
30	10-0148	SHEAVE	1
31	9-0010	BUSHING	1
32	27-0015	BOLT	2
33	11-0081	BELT	1
34	27-8001	BOLT	3
35	29-0006	LOCKWASHER	3
36	28-0002	WASHER	3
37	854-0097	BELTGUARD FRONT ASSEMBLY (INC. 38, 39)	1
38	N/A	BELTGUARD FRONT PANEL (SEE 854-0097)	1
39	33-0423	EDGING *(TWO FEET REQUIRED)	2
40	854-0096	BELTGUARD BACK ASSEMBLY (INC. 41-43)	1
41	33-0020	EDGING *(THREE FEET REQUIRED)	1
42	N/A	BELTGUARD BACK ASSEMBLY (SEE 854-0096)	1
43	N/A	DECAL - BELTGUARD IN PLACE (SEE 34-9016)	1
44	27-9529	BOLT	3
45	24-0074	ELBOW	1
46	15-0243	HOSE	1
47	27-0121	BOLT	4
48	54-0034	COPPER TUBING *(THREE FEET REQUIRED)	1

<b>Id</b>	<b>Item #</b>	<b>Description</b>	<b>Quantity</b>
49	23-0331	ADAPTOR	1
50	23-0328	ADAPTER	1
51	23-0023	REDUCER	1
52	22-0435	CHECK VALVE	1
53	24-0200	NIPPLE	1
54	22-0344	BALL VALVE	1
55	N/A	DECAL - TANK DRAIN (SEE 34-9016)	1
56	24-0219	PLUG	1
57	22-0271	PRESSURE GAUGE	1
58	39-0014	PLUG	1
59	23-0111	REDUCER	1
60	22-0416	PRESSURE SWITCH	1
61	24-0009	PLUG	1
62	22-0267	PRESSURE RELIEF VALVE	1
	34-9016	DECAL SET	1



AM2-S305-80M / AM2-S305-80M (sn:20093139-99999999)

## AX OPTION



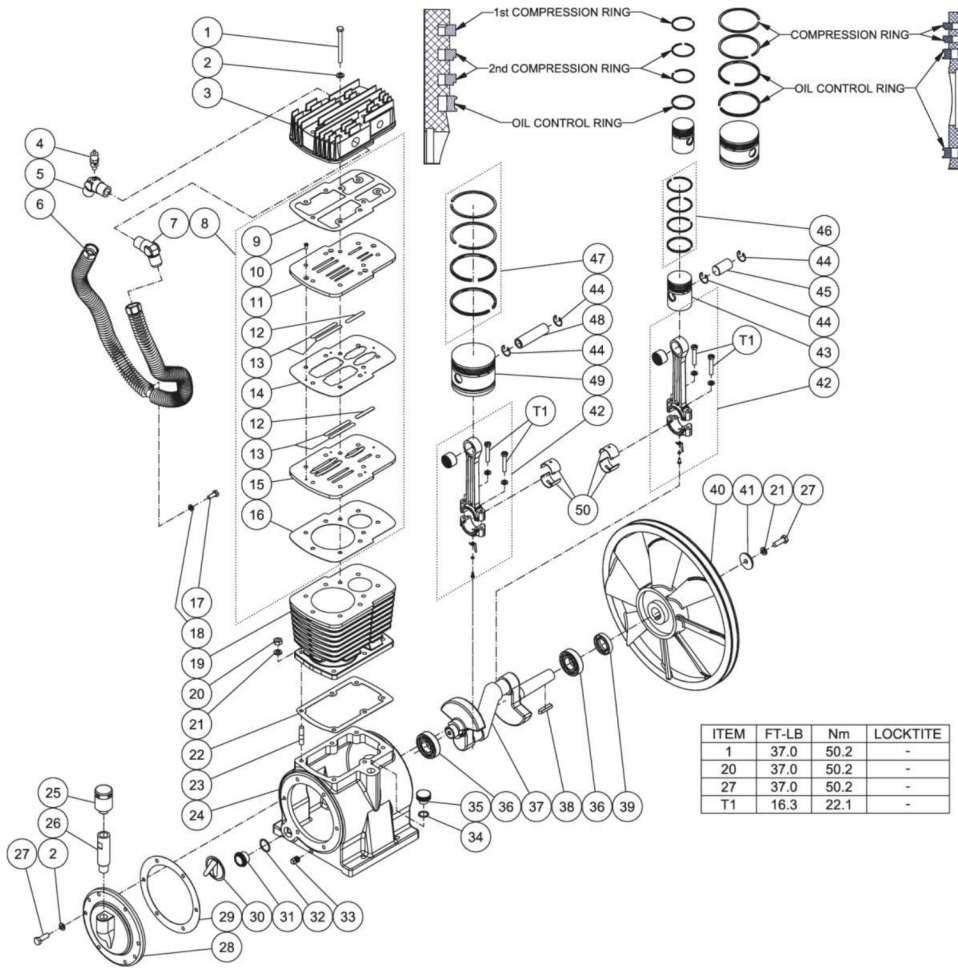
Id	Item #	Description	Quantity
1	32-0483	OVERLOAD RELAY (AX-0058, AX-0059) 230V 1 PHASE, 200V 3 PHASE	1
1	32-0482	OVERLOAD RELAY (AX-0060) 230V 3 PHASE	1
1	32-0481	OVERLOAD RELAY (AX-0061) 460V 3 PHASE	1
2	32-0945	CONTACTOR (AX-0058) 230V 1 PHASE	1
2	32-0235	CONTACTOR (AX-0059) 200V 3 PHASE	1
2	32-0237	CONTACTOR (AX-0060, AX-0061) 230/460V 3 PHASE	1
3	32-079901	ELECTRIC BOX	1
4	27-8835	SCREW	5
5	28-0001	WASHER	3
6	32-0316	DIN RAIL (ONE FOOT REQUIRED)	1
7	30-6001	NUT	3
8	28-1009	STAR WASHER	6
9	27-8807	BOLT	1

<b>Id</b>	<b>Item #</b>	<b>Description</b>	<b>Quantity</b>
10	20- 1037A01	MOUNTING PLATE	1
11	30-0157	LOCKNUT	2
12	28-0003	WASHER	4
13	27-0067	BOLT	2
14	32-0254	CONDUIT ELBOW	2
15	32-0253	CONDUIT (TWO FEET REQUIRED)	1
16	20- 0723A06	CONTROL PANEL	1
17	32-0255	CONDUIT FITTING	2
18	32-0253	CONDUIT (ONE FOOT REQUIRED)	1
19	32-0313	TRANSFORMER	1
20	32-0467	FUSE	2
21	32-0323	FUSE	1
	32-0814	ELEC. REDUCING WASHER 3/4" TO 1/2"	2



AM2-S305-80M / AM2-S305-80M (sn:20093139-99999999)

## PUMP ASSEMBLY



Id	Item #	Description	Quantity
1	27-8043	BOLT	9
2	28-1059	COPPER WASHER	15
3	46-1272	CYLINDER HEAD	1
4	22-0362	LP SAFETY VALVE	1
5	24-0304	65° OUTLET ELBOW W/PORT	1
6	46-1273	INTERCOOLER TUBE	1
7	24-0305	65° OUTLET ELBOW	1
8	70-0473	KIT - VALVE PLATE ASSY - (INC. 9-16)	1
9	N/A	GASKET - VALVE PLATE (UPPER)	1
10	N/A	SCREW	4

<b>Id</b>	<b>Item #</b>	<b>Description</b>	<b>Quantity</b>
11	N/A	UPPER VALVE SEAT	1
12	N/A	HP VALVE REED	2
13	N/A	LP VALVE REED	4
14	N/A	GASKET - VALVE PLATE (MIDDLE)	1
15	N/A	LOWER VALVE SEAT	1
16	N/A	GASKET - VALVE PLATE (LOWER)	1
17	27-8032	BOLT	1
18	29-0054	LOCKWASHER	1
19	46-1274	CYLINDER	1
20	30-7203	NUT	6
21	29-0055	LOCKWASHER	7
22	N/A	GASKET - CYLINDER	1
23	27-8991	STUD	6
24	46-1275	PUMP CRANKCASE	1
25	46-1276	BREATHER ASSY	1
26	46-1277	BREATHER PIPE	1
27	27-8061	BOLT	7
28	46-1278	REAR CRANKCASE COVER	1
29	N/A	GASKET - REAR CRANKCASE COVER	1
30	46-1279	OBSTRUCT OIL NET	1
31	46-1280	OIL LEVEL SIGHT GLASS	1
32	25-0150	O-RING	1
33	24-0009	PLUG	1
34	25-0160	O-RING	1
35	46-1281	OIL FILL CAP	1
36	48-0024	BALL BEARING	2
37	46-1282	PUMP CRANKSHAFT	1
38	43-0125	KEY	1
39	26-0302	OIL SEAL	1
40	10-0139	FLYWHEEL	1
41	N/A	WASHER	1
42	70-0468	KIT - HP CONNECTING ROD ASSEMBLY (INC. 49)	2
43	46-1283	PISTON	1
44	46-1284	PISTON SNAP RING	4
45	46-1285	PISTON PIN	1
46	70-0469	KIT - HP PISTON RING	1
47	70-0470	KIT - LP PISTON RING	1
48	46-1286	PISTON PIN	1
49	46-1287	PISTON	1

<b>Id</b>	<b>Item #</b>	<b>Description</b>	<b>Quantity</b>
50	46-1288	CONNECTING ROD BUSHING	4
	70-0472	KIT - PUMP GASKET - (INC. 9, 14, 16, 22, 29)	1