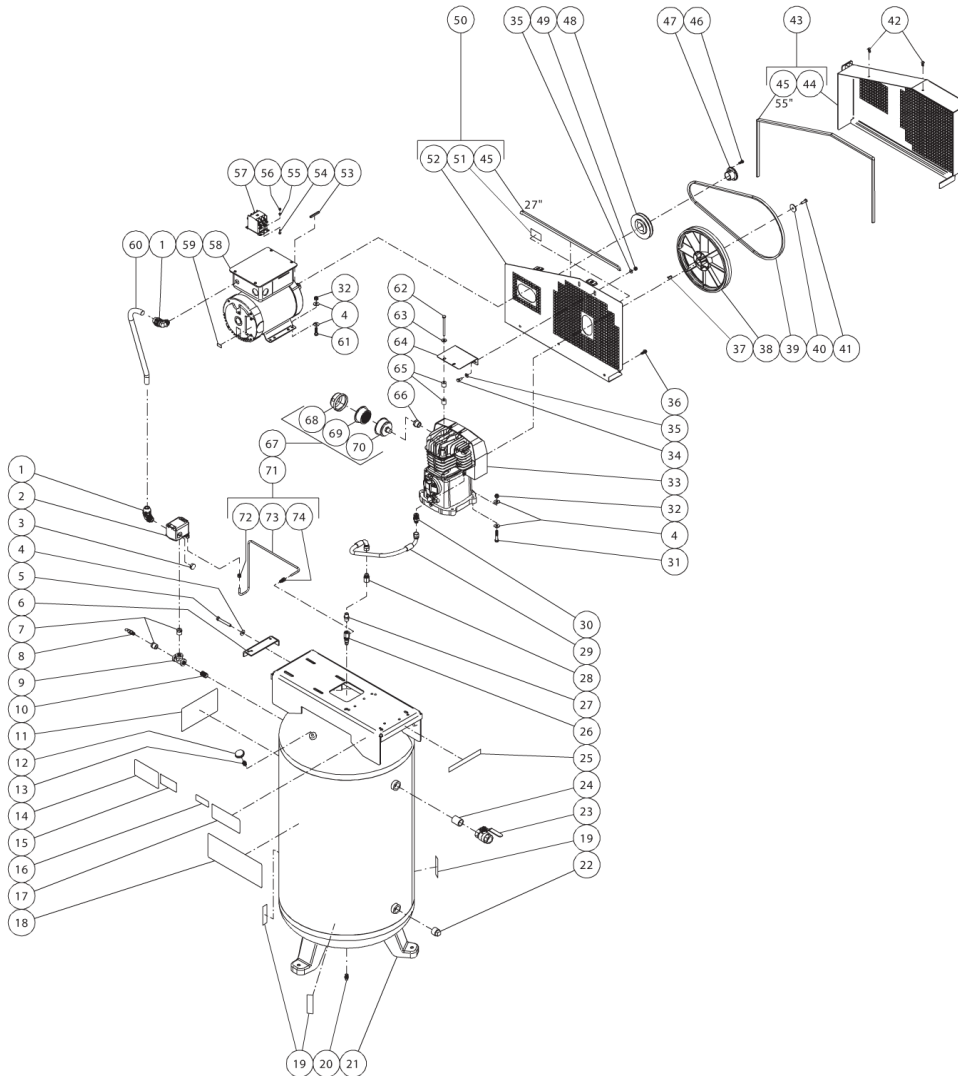




AC1-SE05-80M / AC1-SE05-80M (sn:20027016-99999999)

TANK ASSEMBLY



Id	Item #	Description	Quantity	Rev	Comments
1	32-0254	CONDUIT ELBOW	2		
2	22-0232	PRESSURE SWITCH	1		
3	39-0014	PLUG	1		
4	28-0023	FLATWASHER	17		
5	27-0576	BOLT	1		
6	20-0461A01	BELT TENSIONER PLATE	1		
7	23-0056	REDUCER	2		

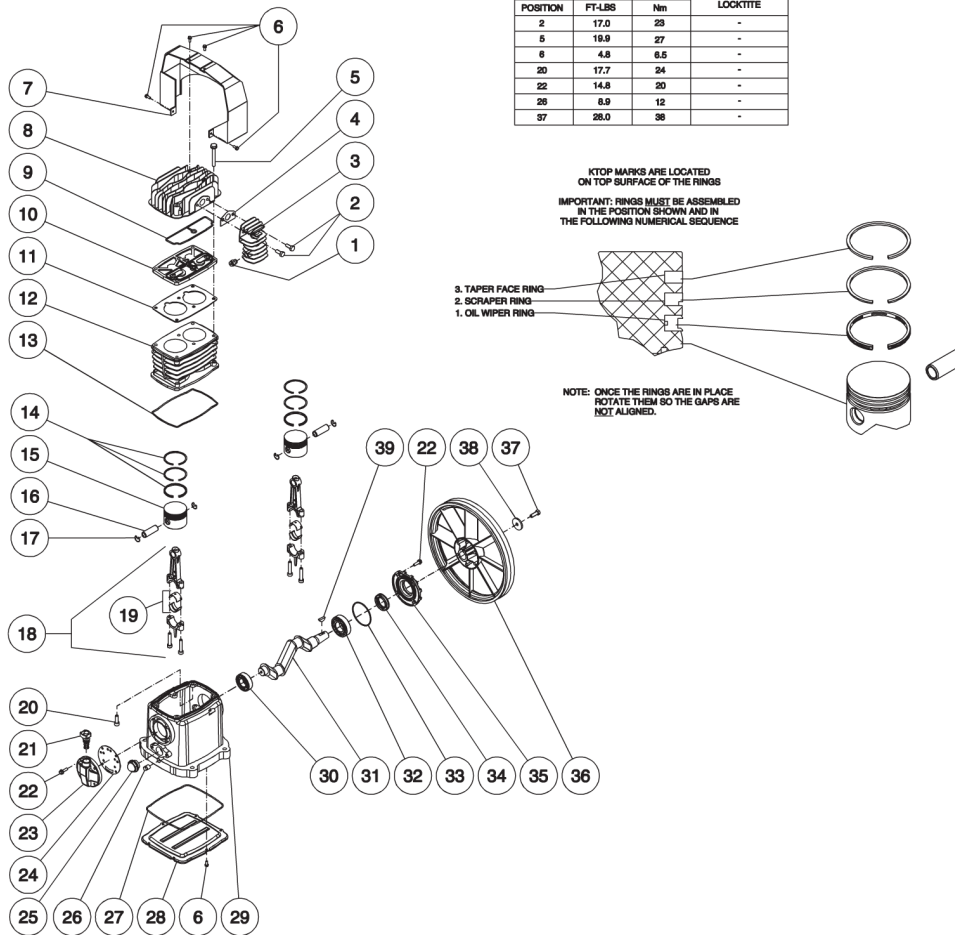
Id	Item #	Description	Quantity	Rev	Comments
8	22-0228	SAFETY VALVE	1		
9	24-0178	TEE	1		
10	24-0174	NIPPLE	1		
11	N/A Sep.	DECAL- DANGER/WARN/CAUT (SEE 34-9016)	1		
12	22-0271	PRESSURE GAUGE	1		
13	23-0111	REDUCER	1		
14	N/A Sep.	DECAL- MAINTENANCE INSTRUCTIONS (SEE 34-9016)	1		
15	N/A	DECAL- DATA PLATE	1		
16	N/A Sep.	DECAL- WARNING: RISK OF BURNS (SEE 34-9016)	1		
17	N/A Sep.	DECAL- OPERATING INSTRUCTIONS (SEE 34-9016)	1		
18	34-0814	DECAL- LOGO	1		
19	N/A Sep.	DECAL- TANK DRAIN (SEE 34-9016)	3		
20	23-0312	PETCOCK	1		
21	N/A	TANK ASSEMBLY	1		
22	24-0219	PLUG	1		
23	22-0287	BALL VALVE	1		
24	24-0200	CLOSE NIPPLE	1		
25	N/A Sep.	DECAL- CHECK OIL TAPE (SEE 34-9016)	1		
26	22-0334	CHECK VALVE	1		
27	24-0010	NIPPLE	1		
28	24-0150	ADAPTER	1		
29	15-0188	HOSE	1		
30	24-0054	NIPPLE	1		
31	27-0121	BOLT	4		
32	30-0159	LOCKNUT	8		
33	3-0175	PUMP	1		
34	27-0066	SCREW	2		
35	28-0003	WASHER	4		
36	27-9524	BOLT	3		
37	43-0102	KEY	1		
38	10-0131	FLYWHEEL W/COMPRESSOR	1		
39	11-0061	DRIVE BELT	1		
40	28-1032	WASHER	1		
41	27-8033	BOLT	1		
42	33-0197	FASTENER	2		
43	854-0067	BELTGUARD ASSEMBLY (INC. 44-45)	1		
44	N/A Sep.	BELTGUARD FRONT (SEE 854-0067)	1		
45	33-0020	EDGING *(SEVEN FEET REQUIRED)	1		
46	27-0015	BOLT W/BUSHING	2		

Id	Item #	Description	Quantity	Rev	Comments
47	9-0010	BUSHING	1		
48	10-0105	SHEAVE	1		
49	30-0157	LOCKNUT	2		
50	854-0066	BELTGUARD BACK ASSEMBLY (INC. 45, 51-52)	1		
51	N/A Sep.	DECAL- WARNING: BELTGUARD IN PLACE (SEE 34-9016)	1		
52	N/A Sep.	BELTGUARD BACK (SEE 854-0066)	1		
53	43-0078	KEY	1		
54	27-9526	SCREW	2		
55	28-1009	LOCKWASHER	2		
56	30-6001	HEX NUT	2		
57	32-0563	CONTACTOR	1		
58	2-0101	MOTOR- 5.0 HP	1		
59	N/A Sep.	DECAL- 230 VOLT (SEE 34-9016)	1		
60	32-0253	CONDUIT FLEX *(TWO FEET REQUIRED)	1		
61	27-0118	BOLT	4		
62	27-8044	SCREW	2		
63	28-0022	WASHER	2		
64	20-0741A01	SUPPORT BRACKET	1		
65	33-0358	SPACER	4		
66	23-0023	BUSHING	1		
67	19-0083	AIR FILTER ASSEMBLY (INC. 68-70)	1		
68	19-0084	FILTER HOUSING	1		
69	19-0082	FILTER REPLACEMENT	1		
70	N/A Sep.	FILTER HOUSING (SEE 19-0083)	1		
71	854-0078	TUBE ASSEMBLY (INC. 72-74)	1		
72	23-0315	COMPRESSION NUT	1		
73	54-0034	TUBE *(THREE FEET REQUIRED)	1		
74	23-0328	ADAPTER	1		
	34-9016	SAFETY DECAL KIT (INC. 11, 14, 16-17, 19, 25, 51, 59)			
		*MUST ORDER IN ONE FOOT LENGTHS			



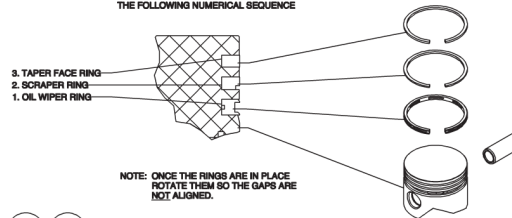
AC1-SE05-80M / AC1-SE05-80M (sn:20027016-99999999)

PUMP



TORQUE SPECIFICATIONS			REQUIRED LOCKTITE
POSITION	FT-LBS	Nm	
2	17.0	23	-
5	19.9	27	-
6	4.8	6.5	-
20	17.7	24	-
22	14.8	20	-
26	8.9	12	-
37	28.0	38	-

KTOP MARKS ARE LOCATED
ON TOP SURFACE OF THE RINGS
IMPORTANT: RINGS MUST BE ASSEMBLED
IN THE POSITION SHOWN AND IN
THE FOLLOWING NUMERICAL SEQUENCE



Id	Item #	Description	Quantity	Rev	Comments
1	22-0253	EASY START VALVE	1		
2	27-8032	SCREW	2		
3	46-1171	AFTER COOLER	1		
4	N/A Sep.	AFTER COOLER GASKET (SEE 70-0393)	1		
5	27-9577	SCREW	6		
6	27-9575	SCREW	10		
7	46-1197	AIR SHROUD	1		
8	46-1172	HEAD	1		
9	N/A Sep.	HEAD GASKET (SEE 70-0393)	1		
10	22-0388	HOLDER PLATE VALVE	1		

Id	Item #	Description	Quantity	Rev	Comments
11	N/A Sep.	CYLINDER GASKET (SEE 70-0393)	1		
12	46-1170	CYLINDER	1		
13	N/A Sep.	CRANKCASE GASKET (SEE 70-0393)	1		
14	70-0392	RING SET - 65 MM	2		
14	70-0268	RING SET - 65.4 MM	2		
15	N/A	PISTON	2		
16	N/A	WRIST PIN	2		
17	N/A	SNAP RING	2		
18	N/A	CONNECTING ROD	2		
19	N/A	CONNECTING ROD BEARING	2		
20	27-8194	SCREW	4		
21	46-0818	CRANKCASE FILL PLUG W/ O-RING	1		
22	27-8002	BOLT	8		
23	46-0819	OIL FILL END CAP	1		
24	N/A Sep.	OIL FILL END CAP GASKET (SEE 70-0393)	1		
25	46-0820	SIGHT GLASS	1		
26	39-0106	OIL DRAIN PLUG	1		
27	N/A Sep.	OIL PAN O-RING (SEE 70-0393)	1		
28	N/A	OIL PAN	1		
29	N/A	CRANKCASE	1		
30	48-0060	BALL BEARING	1		
31	N/A	PISTON CRANKSHAFT	1		
32	48-0024	BALL BEARING	1		
33	N/A Sep.	END CAP GASKET (SEE 70-0393)	1		
34	26-0208	CRANKSHAFT SEAL	1		
35	46-1169	FRONT END CAP	1		
36	10-0131	FLYWHEEL	1		
37	27-8033	BOLT	1		
38	28-1032	WASHER	1		
39	43-0102	WOODRUFF KEY	1		
KIT	70-0393	GASKET KIT (INC. 4, 9, 11, 13, 24, 27, 33)			