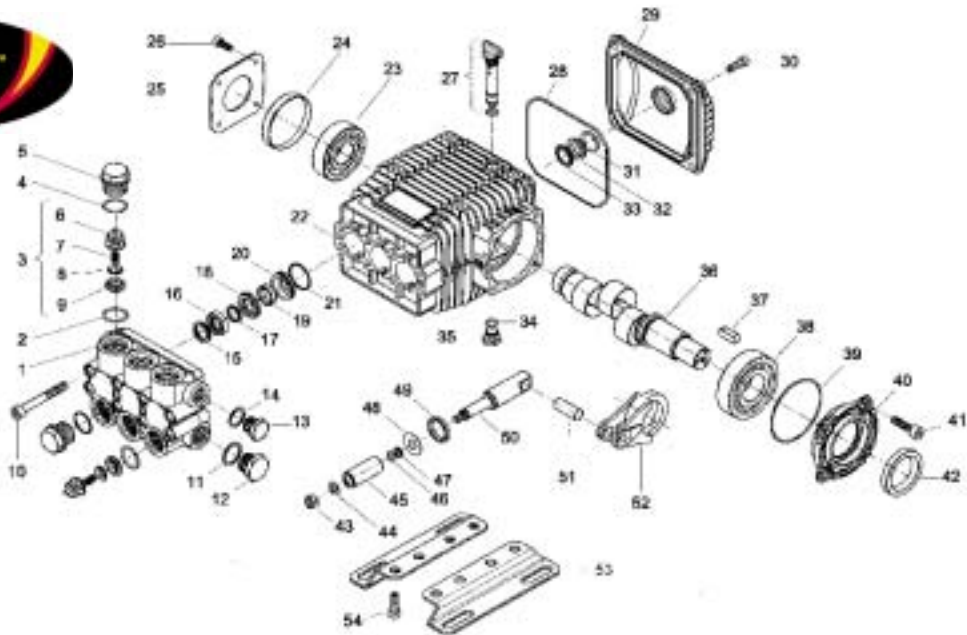


# Legacy Model TML 4053F



| POS NO. | PART NO.     | DESCRIPTION                        | KIT    | NO. PCS. |
|---------|--------------|------------------------------------|--------|----------|
| 1       | 15-070070282 | Pump Head                          |        | 1        |
| 2       | 15-803182002 | O-Ring Dia. 2.62x17.13             | 123    | 6        |
| 3       | 15-079819973 | Check Valves                       | 123    | 1        |
| 4       | 15-803182002 | O-Ring Dia. 2.62x17.13             | 123    | 6        |
| 5       | 15-070040532 | Ex. Deep Sealing Valve Cap M27x1.5 |        | 1        |
| 6       | 15-060105322 | Valve Cage                         | 123    | 1        |
| 7       | 15-070048512 | Valve Spring                       | 123    | 1        |
| 8       | 15-060104512 | Poppet                             | 123    | 1        |
| 9       | 15-040023512 | Valves Assembly Seat               | 123    | 6        |
| 10      | 15-862985002 | Screw TCEI M8x70 UNI 5931          |        | 8        |
| 11      | 15-824140002 | Gasket for Coupling 21.2x26x1      |        | 1        |
| 12      | 15-852629002 | Plug G 1/2"                        |        | 1        |
| 13      | 15-852579002 | Plug G 3/8                         |        | 1        |
| 14      | 15-824109002 | Copper Gasket Dia. 17x22x1         |        | 1        |
| 15      | 15-040270322 | Seal Packer                        | 69, 74 | 3        |
| 16      | 15-802020002 | Packing D.15                       | 69, 74 | 3        |
| 17      | 15-040269322 | Anti-Extrusion Ring                | 69, 74 | 3        |
| 18      | 15-040268532 | Front Gland                        | 69     | 3        |
| 19      | 15-802034002 | U Pressure Seal Dia. 15x22x5.5     | 69, 74 | 3        |
| 20      | 15-070016532 | Rear Gland                         | 69     | 3        |
| 21      | 15-803080002 | O-Ring                             | 69, 74 | 3        |
| 22      | 15-070001092 | Crankcase                          |        | 1        |
| 23      | 15-812725002 | Bearing Riv 6B 25                  |        | 1        |
| 24      | 15-802102002 | Cover 62x07 RCA                    |        | 1        |
| 25      | 15-050045612 | Crankcase Cover                    |        | 1        |
| 26      | 15-862108002 | Screw M6x16 UNI 5931               |        | 4        |
| 27      | 15-049832973 | Filler Plug                        |        | 1        |
| 28      | 15-803210682 | O-Ring D.2.62x120.32               |        | 1        |
| 29      | 15-040117092 | Rear Cover                         |        | 1        |

| POS NO. | PART NO.     | DESCRIPTION                     | KIT | NO. PCS. |
|---------|--------------|---------------------------------|-----|----------|
| 30      | 15-862168002 | Galvanized Screw M6x22 UNI 5931 |     | 4        |
| 31      | 15-803189002 | O-Ring Dia. 2.62x18.72          |     | 1        |
| 32      | 15-040120322 | Oil Sight Glass                 |     | 1        |
| 33      | 15-801184002 | Ring                            |     | 1        |
| 34      | 15-803057002 | O-Ring 2037 - 39.34x2.62        |     | 1        |
| 35      | 15-852543502 | Cap G 1/4x9 (EX 852542002)      |     | 1        |
| 36      | 15-070036262 | Crankshaft D.24 E=5.4           |     | 1        |
| 37      | 15-806534002 | Tab 8x7x35                      |     | 1        |
| 38      | 15-812776002 | Bearing                         |     | 1        |
| 39      | 15-803080702 | O-Ring D.1.78x69.57             |     | 1        |
| 40      | 15-070003092 | Support                         |     | 1        |
| 41      | 15-862547002 | Screw M8x18                     |     | 4        |
| 42      | 15-802119002 | Oil Seal 30x52x7                |     | 1        |
| 43      | 15-814561002 | Stainless Steel Nut M8 UNI 5589 |     | 4        |
| 44      | 15-843642902 | Washer Dia. 8.1x14x1            |     | 1        |
| 45      | 15-070007182 | Ceramic Piston DN 15            |     | 3        |
| 46      | 15-803049002 | O-Ring Dia. 1.78x5.28           |     | 3        |
| 47      | 15-803908502 | Seal                            |     | 3        |
| 48      | 15-843726002 | Washer Dia. 9.1x24x1            |     | 3        |
| 49      | 15-802063502 | Axial Ring                      | 65  | 3        |
| 50      | 15-070009512 | Plunger Rod                     |     | 3        |
| 51      | 15-852006282 | Piston Pin                      |     | 3        |
| 52      | 15-070005112 | Bronze Conrod                   |     | 3        |
| 53      | 15-040247612 | Mounting Rail (Optional)        |     | 3        |
| 54      | 15-862495002 | Screw M8x16 (Optional)          |     | 3        |
| 55      | 15-079802973 | Mounting Rail Kit (Optional)    |     | 2        |

|            | KIT 123 CHECK VALVE/O-RING | KIT 37 PLUNGER OIL SEAL | KIT 69 PACKING/ BRASS ASSY | KIT 74 PACKING ONLY |
|------------|----------------------------|-------------------------|----------------------------|---------------------|
| KIT        |                            |                         |                            |                     |
| PART #     | 15-123                     | 15-37                   | 15-69                      | 15-74               |
| TOTAL PCS. | 12                         | 3                       | 21                         | 15                  |