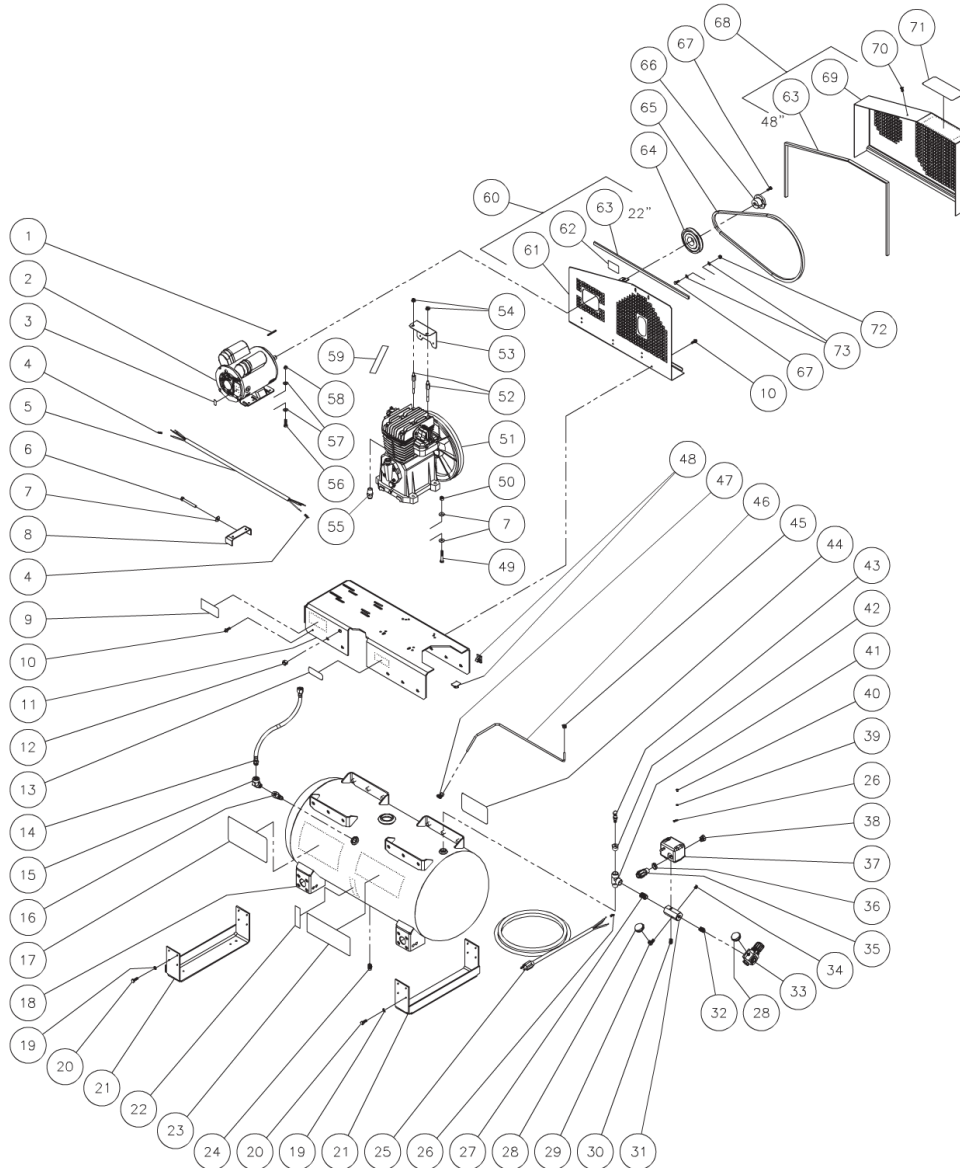




AC1-SE03-30M / AC1-SE03-30M (sn:0-99999999)

TANK ASSEMBLY



Id	Item #	Description	Quantity	Rev	Comments
1	43-0073	KEY	1		
2	2-0138	MOTOR	1		
3	N/A Sep.	DECAL- 230V (SEE 34-9016)	1		
4	32-0003	TERMINAL	6		
5	32-0445	CORD *(THREE FEET REQUIRED)	1		
6	27-0576	BOLT	1		

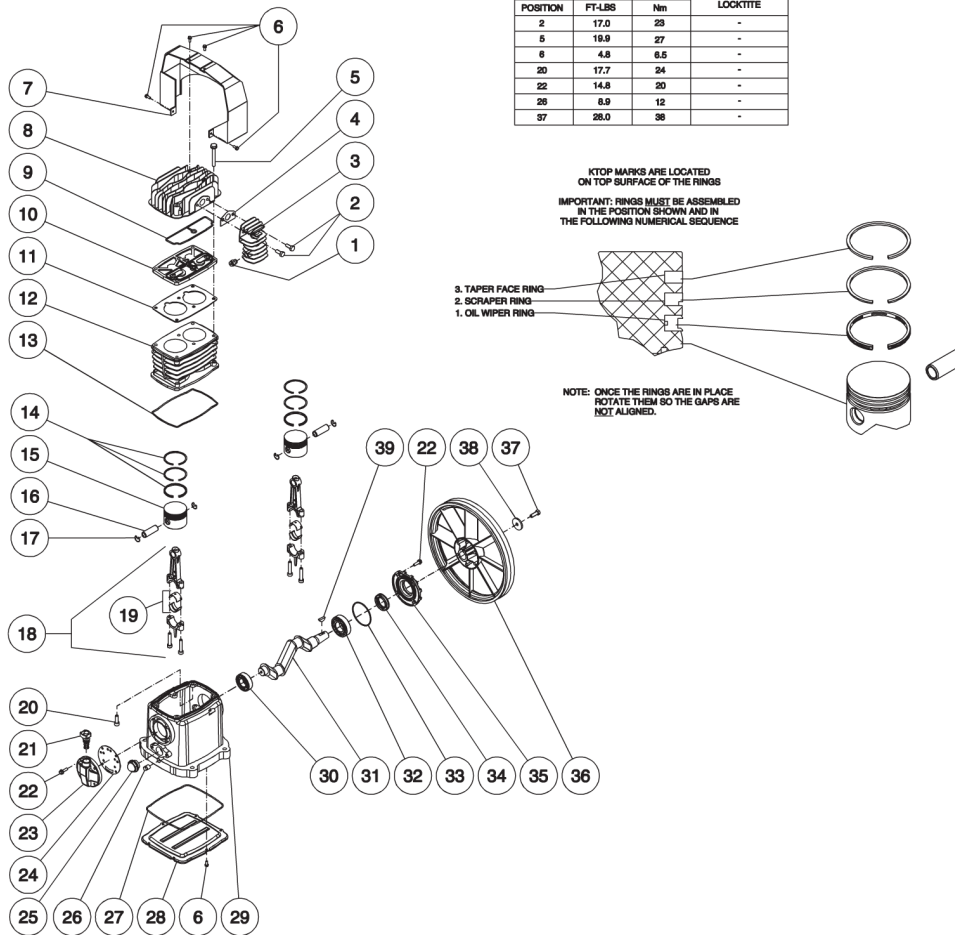
Id	Item #	Description	Quantity	Rev	Comments
7	28-0023	FLATWASHER	9		
8	20-0614A01	BELT TENSIONER PLATE	1		
9	N/A	DECAL- DATA PLATE	1		
10	27-9524	BOLT	16		
11	5-0189A01	BASEPLATE ASSEMBLY	1		
12	32-0465	PLUG	1		
13	N/A Sep.	DECAL- WARNING: HOT SURFACE (SEE 34-9016)	1		
14	15-0245	HOSE	1		
15	24-0041	ELBOW	1		
16	22-0334	CHECK VALVE	1		
17	N/A Sep.	DECAL- DANGER/WARNING/CAUTION (SEE 34-9016)	1		
18	N/A	AIR TANK ASSEMBLY	1		
19	29-0007	LOCKWASHER	16		
20	27-0067	BOLT	16		
21	20-0671A01	SUPPORT FOOT BRACKET	2		
22	N/A Sep.	DECAL- TANK DRAIN (SEE 34-9016)	2		
23	34-0828	DECAL- MI-T-M AIR COMPRESSOR	1		
24	23-0312	PETCOCKS	1		
25	32-0755	CORD PLUG SET	1		
26	32-0099	TERMIANAL	3		
27	24-0174	NIPPLE	1		
28	22-0271	PRESSURE GAUGE	2		
29	23-0118	ELBOW	1		
30	24-0009	PLUG	1		
31	24-0266	MANIFOLD	1		
32	24-0175	NIPPLE	1		
33	22-0231	ADJUSTABLE REGULATOR	1		
34	24-0082	PLUG	1		
35	32-0766	CORD STRAIN RELIEF	1		
36	32-0108	LOCKNUT	1		
37	22-0312	PRESSURE SWITCH	1		
38	9-0045	CORD RELIEF	1		
39	28-1009	LOCKWASHER	1		
40	27-8933	SCREW	1		
41	24-0242	STREET TEE	1		
42	23-0056	NIPPLE	1		
43	22-0228	PRESSURE RELIEF VALVE	1		
44	N/A Sep.	DECAL- MAINTENANCE INSTRUCTIONS (SEE 34-9016)	1		
45	23-0315	NUT	1		

Id	Item #	Description	Quantity	Rev	Comments
46	54-0034	TUBE *(THREE FEET REQUIRED)	1		
47	23-0316	ELBOW	1		
48	33-0264	WIRE CLIPS	2		
49	27-0121	BOLT	4		
50	30-0159	LOCKNUT	4		
51	3-0175	COMPRESSOR	1		
52	27-8920	STUD	2		
53	20-0475A01	SUPPORT BRACKET	1		
54	30-3023	NUT	2		
55	23-0331	ADAPTER	1		
56	27-0068	BOLT	4		
57	28-0022	WASHER	8		
58	30-0157	LOCKNUT	4		
59	N/A Sep.	DECAL- CHECK OIL TAPE (SEE 34-9016)	1		
60	854-0007	BELTGUARD BACK ASSEMBLY (INC. 61-63)	1		
61	N/A Sep.	BELTGUARD BACK (SEE 854-0007)	1		
62	N/A Sep.	DECAL- WARNING: BELTGUARD IN PLACE (SEE 34-9016)	1		
63	33-0020	EDGING *(SIX FEET REQUIRED)	1		
64	10-0101	DRIVE PULLEY	1		
65	11-0040	DRIVE BELT	1		
66	9-0037	BUSHING	1		
67	27-0015	BOLT	4		
68	854-0009	BELTGUARD COVER ASSEMBLY (INC. 63, 69)	1		
69	N/A Sep.	BELTGUARD COVER (SEE 854-0009)	1		
70	33-0197	FASTENER	1		
71	N/A Sep.	DECAL- OPERATING INSTRUCTIONS (SEE 34-9016)	1		
72	30-0155	LOCKNUT	2		
73	28-0002	WASHER	4		
	34-9016	SAFETY DECAL KIT (INC. 3, 13, 17, 22, 44, 59, 62, 71)			
		*MUST ORDER IN ONE FOOT LENGTHS			



AC1-SE03-30M / AC1-SE03-30M (sn:0-99999999)

PUMP



TORQUE SPECIFICATIONS			REQUIRED LOCKTITE
POSITION	FT-LBS	Nm	
2	17.0	23	-
5	19.9	27	-
6	4.8	6.5	-
20	17.7	24	-
22	14.8	20	-
26	8.9	12	-
37	28.0	38	-

Id	Item #	Description	Quantity	Rev	Comments
1	22-0253	EASY START VALVE	1		
2	27-8032	SCREW	2		
3	46-1171	AFTER COOLER	1		
4	N/A Sep.	AFTER COOLER GASKET (SEE 70-0393)	1		
5	27-9577	SCREW	6		
6	27-9575	SCREW	10		
7	46-1197	AIR SHROUD	1		
8	46-1172	HEAD	1		
9	N/A Sep.	HEAD GASKET (SEE 70-0393)	1		
10	22-0388	HOLDER PLATE VALVE	1		

Id	Item #	Description	Quantity	Rev	Comments
11	N/A Sep.	CYLINDER GASKET (SEE 70-0393)	1		
12	46-1170	CYLINDER	1		
13	N/A Sep.	CRANKCASE GASKET (SEE 70-0393)	1		
14	70-0392	RING SET - 65 MM	2		
14	70-0268	RING SET - 65.4 MM	2		
15	N/A	PISTON	2		
16	N/A	WRIST PIN	2		
17	N/A	SNAP RING	2		
18	N/A	CONNECTING ROD	2		
19	N/A	CONNECTING ROD BEARING	2		
20	27-8194	SCREW	4		
21	46-0818	CRANKCASE FILL PLUG W/ O-RING	1		
22	27-8002	BOLT	8		
23	46-0819	OIL FILL END CAP	1		
24	N/A Sep.	OIL FILL END CAP GASKET (SEE 70-0393)	1		
25	46-0820	SIGHT GLASS	1		
26	39-0106	OIL DRAIN PLUG	1		
27	N/A Sep.	OIL PAN O-RING (SEE 70-0393)	1		
28	N/A	OIL PAN	1		
29	N/A	CRANKCASE	1		
30	48-0060	BALL BEARING	1		
31	N/A	PISTON CRANKSHAFT	1		
32	48-0024	BALL BEARING	1		
33	N/A Sep.	END CAP GASKET (SEE 70-0393)	1		
34	26-0208	CRANKSHAFT SEAL	1		
35	46-1169	FRONT END CAP	1		
36	10-0131	FLYWHEEL	1		
37	27-8033	BOLT	1		
38	28-1032	WASHER	1		
39	43-0102	WOODRUFF KEY	1		
KIT	70-0393	GASKET KIT (INC. 4, 9, 11, 13, 24, 27, 33)			