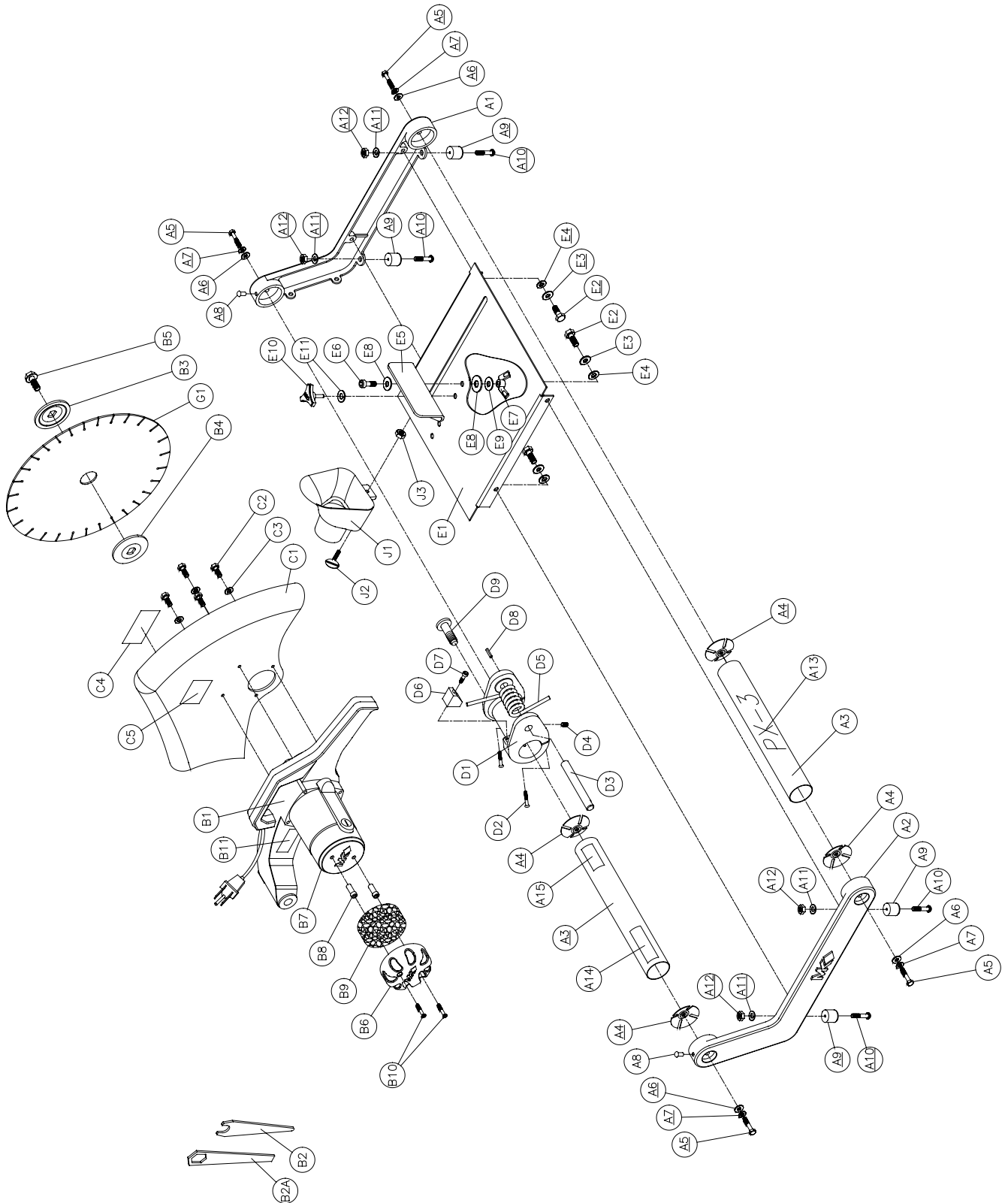


PAVER SAW, PX-3 ASSY FINAL



**PAVER SAW, PX-3 ASSY, FINAL**

<b>ITEM NO.</b>	<b>DESCRIPTION</b>	<b>PART OR IDENTIFYING NO.</b>	<b>QTY. REQ.</b>
<b>A</b>	ASSEMBLY, FRAME	N/A	1
<b>A1</b>	CASTING, FRAME, RIGHT (COMP)	160246	1
<b>A2</b>	CASTING, FRAME, LEFT (COMP)	160248	1
<b>A3</b>	SUPPORT, HORIZONTAL FRAME	160249	2
<b>A4</b>	TUBE CONNECTOR, 1/4-20	157930	4
<b>A5</b>	SCREW, 1/4-20 X 2" HEX HEAD CAP	158282	4
<b>A6</b>	WASHER, 1/4 SAE FLAT	151915	4
<b>A7</b>	WASHER, 1/4 SPLIT LOCK	152591	4
<b>A8</b>	DRIVE STUD, ROUND HEAD GROOVED #16 (1/4) X 1/2	158071	2
<b>A9</b>	BUMPER W/WASHER, 1.0 (FOOT)	160418	4
<b>A10</b>	SCREW, #8-32 X 1 PAN HEAD PHILLIPS	160446	4
<b>A11</b>	WASHER, #8 SPLIT LOCK	160447	4
<b>A12</b>	NUT, HEX #8-32	153549	4
<b>A13</b>	LABEL, ADHESIVE "PX3"	160419	1
<b>A14</b>	LABEL, PROP 65 WARNING	158322	1
<b>A15</b>	LABEL, EXTENSION CORD WARNING	155672	1
<b>B</b>	ASSEMBLY, CUTTING HEAD	N/A	1
<b>B1</b>	ASSEMBLY, ARM W/MOTOR & HANDLE	160251	1
<b>B2</b>	WRENCH, BLADE NUT, 14 MM	158406	1
<b>B2A</b>	WRENCH, BLADE SHAFT	158110	1
<b>B3</b>	FLANGE, OUTER BLADE (STAMPED)	158105	1
<b>B4</b>	FLANGE, INNER BLADE (TURNED)	158106	1
<b>B5</b>	SCREW, M10-1.5 X 20 MM HEX FLANGE (BLADE RETAINING)	158107	1
<b>B6</b>	CAP, MOTOR	157877	1
<b>B7</b>	CAP, MOTOR FILTER	157878	1
<b>B8</b>	SPACER PIN, CAP SCREW	157879	2
<b>B9</b>	ELEMENT, FILTER	157729	1
<b>B10</b>	SCREW, #8 X 1-1/2, COMBO HEAD PAN, SELF-TAPPING	158157	2
<b>B11</b>	LABEL, SAFETY CAUTION	155576	1
<b>C</b>	ASSEMBLY, BLADE GUARD	N/A	1
<b>C1</b>	CASTING, BLADE GUARD (COMP)	160258	1
<b>C2</b>	SCREW, M6-1 X 20 MM HEX HEAD CAP	158158	4
<b>C3</b>	WASHER, M6 SPLIT LOCK	158159	4
<b>C4</b>	DECAL, ADHESIVE "PAVER EXTREME"	160420	1
<b>C5</b>	TAG, SERIAL	158096	1
<b>D</b>	ASSEMBLY, PIVOT CLAMP	N/A	1
<b>D1</b>	CASTING, PIVOT CLAMP (COMP)	160358	1
<b>D2</b>	SCREW, 1/4-20 X 1-1/2 SOCKET HEAD CAP	154683	2
<b>D3</b>	PIN, PIVOT .625 X 5.6	157645	1

**PAVER SAW, PX-3 ASSY, FINAL CONTINUED**

<b>ITEM NO.</b>	<b>DESCRIPTION</b>	<b>PART OR IDENTIFYING NO.</b>	<b>QTY. REQ.</b>
<b>D4</b>	SCREW, SET 1/4-20 X 1/4 CUP POINT	157528	1
<b>D5</b>	SPRING, TORSION	160252	1
<b>D6</b>	STOP BLOCK	158226	1
<b>D7</b>	SCREW, 1/4-20 X 3/4, SOCKET HEAD CAP	152587	1
<b>D8</b>	PIN, GROOVED DOWEL 5/16 X 1-1/4	160458	1
<b>D9</b>	LOCK, CUTTING HEAD	160460	1
<b>E</b>	ASSEMBLY, TABLE	N/A	1
<b>E1</b>	TABLE (COMP) W/PLASTIC OVER MOLD	160409	1
<b>E2</b>	SCREW, 5/16-18 X 3/4 HEAD CAP	151369	4
<b>E3</b>	WASHER, 5/16 SAE FLAT	151754	4
<b>E4</b>	WASHER, 5/16 SPLIT LOCK	151747	4
<b>E5</b>	BACKSTOP, TABLE	160349	1
<b>E6</b>	SCREW, 3/8 X 1/2 SOCKET HEAD SHOULDER, 5/16-18 X 1.0	160459	1
<b>E7</b>	NUT, WING NYLOK 5/16-18	151746	1
<b>E8</b>	WASHER, 3/8 SAE FLAT	150923	2
<b>E9</b>	WASHER, 5/16 SAE FLAT	151754	1
<b>E10</b>	KNOB, 3 PRONG 3/8-16 X 1	156175	1
<b>E11</b>	WASHER, 3/8 SPLIT LOCK	150925	1
<b>F</b>	ASSEMBLY, PACKAGING CARTON	N/A	1
<b>F1</b>	CARTON, MK-PX3	160421	1
<b>F2</b>	INSERT, CARTON		
<b>G</b>	ASSEMBLY, ACCESSORY PACK	N/A	1
<b>G1</b>	BLADE, 14" PX10, SEGMENTED W/COOLING HOLES (6 MM RIM HEIGHT)	160448	1
<b>G2</b>	WARRANTY CARD	155037	1
<b>G3</b>	SELL SHEET, TILE ACCESSORY	156915	1
<b>G4</b>	EXTRA FILTER ELEMENT	157729	1
<b>G5</b>	OPERATION AND PARTS MANUAL, MK-PX3	160445	1
<b>J</b>	ASSEMBLY, PX3 DUST COLLECTOR	N/A	1
<b>J1</b>	NOZZLE, PX3 2-1/2 DUST	160408	1
<b>J2</b>	SCREW, 1/4-20 X 1 SHOULDER THUMB	160461	1
<b>J3</b>	NUT, 1/4-20 HEX W/WASHER	153941	1