



HEARTH PRODUCTS

P/N 875037M Rev. E 01/2011

This manual is part of a set of two supporting this product. Refer to P/N 850044M for Installation Instructions. Ce manuel est disponible en français, simplement en faire la demande. Numéro de la pièce 875037CF.

WHAT'S INSIDE

Table of Contents 2
Safety and Your Fireplace 2
FREE Safety Guard Offer (Protects Against Burns) 2
Important Safety Information 4
Attaching the Safety-in-Operation Warnings 5
[EN FRANÇAIS] L'information de sûreté importante 3-4
Apposition des mises en garde relatives à la sécurité d'utilisation 5
[EN ESPAÑOL] Información importante de seguridad 3-4
Colocación de advertencias de seguridad en operación 5

CARE AND OPERATION INSTRUCTIONS

ADAGIO™ Direct-Vent Gas Fireplaces



MODELS

Millivolt
ADAGIO-MN
ADAGIO-MP

Electronic
ADAGIO-EN



OTL Report No. 116-F-48-5



INSTALLER: Leave this manual with the appliance.
CONSUMER: Retain this manual for future reference.
INSTALLATEUR : Laissez cette notice avec l'appareil.
CONSOMMATEUR : Conservez cette notice pour consultation ultérieure.



WARNING / AVERTISSEMENT / AVISO

- HOT GLASS WILL CAUSE BURNS.
DO NOT TOUCH GLASS UNTIL COOLED.
NEVER ALLOW CHILDREN TO TOUCH GLASS.



- UNE SURFACE VITRÉE CHAUDE PEUT CAUSER DES BRÛLURES.
LAISSER REFROIDIR LA SURFACE VITRÉE AVANT D'Y TOUCHER.
NE PERMETTEZ JAMAIS À UN ENFANT DE TOUCHER LA SURFACE VITRÉE.

- EL VIDRIO CALIENTE CAUSARÁ QUEMADURAS.
USTED DEBE NUNCA TOCAR EL VIDRIO CALIENTE.
LOS NIÑOS DEBEN NUNCA TOCAR EL VIDRIO.

WARNING: If the information in these instructions is not followed exactly, a fire or explosion may result, causing property damage, personal injury, or death.

- Do not store or use gasoline or other flammable vapors and liquids in the vicinity of this or any other appliance.
- WHAT TO DO IF YOU SMELL GAS:
• Do not try to light any appliance.
• Do not touch any electrical switch; do not use any phone in your building.
• Immediately call your gas supplier from a neighbor's phone. Follow the gas supplier's instructions.
• If you cannot reach your gas supplier, call the fire department.
- Installation and service must be performed by a qualified installer, service agency or the gas supplier.

AVERTISSEMENT : Assurez-vous de bien suivre les instructions données dans cette notice pour réduire au minimum le risque d'incendie ou d'explosion ou pour éviter tout dommage matériel, toute blessure ou la mort.

- Ne pas entreposer ni utiliser d'essence ni d'autres vapeurs ou liquides inflammables dans le voisinage de cet appareil ou de tout autre appareil.
- QUE FAIRE SI VOUS SENTEZ UNE ODEUR DE GAZ :
• Ne pas tenter d'allumer d'appareil.
• Ne touchez à aucun interrupteur. Ne pas vous servir des téléphones se trouvant dans le bâtiment où vous trouvez.
• Appelez immédiatement votre fournisseur de gaz depuis un voisin. Suivez les instructions du fournisseur.
• Si vous ne pouvez rejoindre le fournisseur de gaz, appelez le service des incendies.
- L'installation et l'entretien doivent être assurés par un installateur ou un service d'entretien qualifié ou par le fournisseur de gaz.

ACCESSORY COMPONENTS

Product Reference Information			
Cat. No.	Model	Ship. Weight	Ship. Volume
H5766	ADAGIO-MN	70 lb.	10.25 cu. ft.
H5767	ADAGIO-MP	70 lb.	10.25 cu. ft.
H5768	ADAGIO-EN	70 lb.	10.25 cu. ft.



Digital Wall Thermostat ***

The wall thermostat kit provides temperature control for optimum comfort.

Wall Thermostat, Millivolt ***		
Cat. No.	Model No.	Description
H4635	DWTK	Wall Thermostat Kit, White



Flame Modulating Remote Control

Flame Modulating Remote Controls were developed to provide a safe, reliable and user-friendly remote control system for appliances equipped with a Millivolt Gas Valve. A detailed set of instructions are included with each remote.

Flame Modulating Remote Control Kits		
Cat. No.	Model No.	Description
H0301	RCL-MN	Natural Gas
H0302	RCL-ML	Propane Gas

(ref. Form # 750,130M)



Standard Remote Control System

The Model RCL (Standard) Remote Control System, features a simplistic OFF/ON control function for the fireplace. This model includes a hand-held transmitter, a remote receiver with wall-mount cover plate and all hardware required to install the unit. The remote receiver can be wall or hearth mounted.

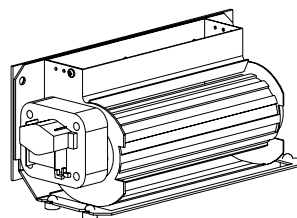
The transmitter has ON and OFF functions that are activated by pressing either button on the face of the transmitter. When a button on the transmitter is pressed, a signal light illuminates briefly to verify that a signal has been sent.

The Model RCL is designed to operate with all millivolt ignition systems, as well as electronic ignition systems. It may be installed with use for either natural gas or propane gas appliances. The RCL offers ease of installation and allows you to execute on-off commands to the fireplace effortlessly with one simple motion.

The Model RCL comes complete with detailed operating instructions.

Remote Control Kit, Standard		
Cat. No.	Model No.	Description
H0249	RCL	Remote Control System (Standard)

(ref. Form # 750,127M)



Forced Air Kit (for millivolt models only)

If the main power supply was wired to the fireplace J-box/receptacle and wired to a wall switch or wall mount rheostat at the time of installation, an optional air-circulating blower kit can be installed.

Forced Air Blower Kit, Single Speed		
Cat. No.	Model No.	Description
H6161	ADAGIO-BLWR	Blower Kit

(ref. Form # 750,238M)



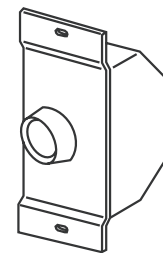
Deluxe Remote Control System

The Model RCL-T (Deluxe) Remote Control System has all of the features of the standard system along with an added easy to read LCD screen which presents access to many enhancements, including; battery power level indicator, timer, mode of operation, thermostatic display including room temperature in either metric or English units, flame indicator and clock. Fully programmable, the Model RCL-T allows for virtual command over nearly all operational and temperature variables, using the hand held remote control transmitter.

The Model RCL-T (Deluxe) remote control system is installed in the same manner as the standard system, may be operated with electronic and millivolt systems with either natural gas or propane gas. The RCL-T comes complete with detailed operating instructions.

Remote Control Kit, Deluxe		
Cat. No.	Model No.	Description
H0251	RCL-STAT	Remote Control System (Deluxe)

(ref. Form # 750,129M)



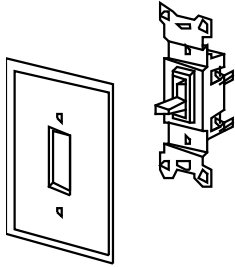
Variable Speed Wall Switch ***

Provides variable speed control if optional blower kit is purchased.

Variable Speed Wall Switch ***		
Cat. No.	Model No.	Description
045571H	VSWS	Rocker Switch Kit

***Note: These kits can only be installed at the time of the fireplace installation.

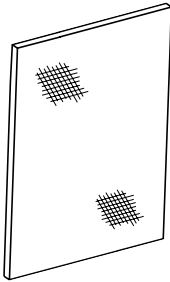
ACCESSORY COMPONENTS CONTINUED



ON/OFF Wall Switch Kit ***

The ON/OFF wall switch kit may be used to control the operation of the fireplace burner (in place of the unit-mounted ON/OFF switch) or provide ON/OFF control of the optional blower. Install the ON/OFF wall switch in a convenient location near the fireplace.

ON/OFF Wall Switch Kit ***		
Cat. No.	Model No.	Description
85L87	FWSK	ON/OFF Wall Switch Kit



Barrier Screen Panel Kit

This easy to install optional screen panel installs over the standard glass enclosure panel and provides a barrier to prevent direct contact with the hot glass surface.

Barrier Screen Panel Kit		
Cat. No.	Model No.	Description
H5777	ADAGIO-BSK	Barrier Screen Panel

(ref. Form # 750,233M)

***Note:** To ensure proper fit of the facade. The appliance base will need to be elevated 3/4" above the floor to allow for the proper fit of the facade (i.e. use 3/4" board as platform).

****Note:** This appliance is not approved for operation without a firebox liner kit (sold separately).

*****Note:** These kits can only be installed at the time of the fireplace installation.

Red Rustic Liner



Cobblestone Liner



Stucco Liner



Red Herringbone Liner

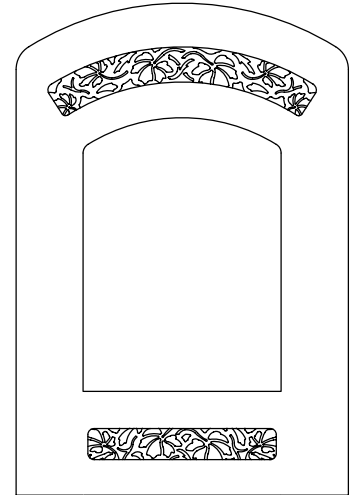


Refractory Firebox Liner Kits

The refractory firebox liner kit includes a 1-piece ceramic panel which covers the side and back walls of the firebox.

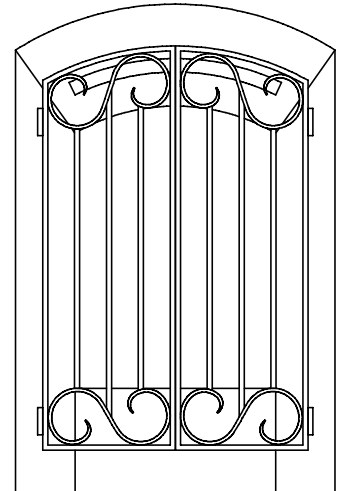
Refractory Firebox Liner Kits**		
Cat. No.	Model	Description
H5769	ADAGIO-RR	Red Rustic Liner
H5770	ADAGIO-RH	Red Herringbone Liner
H5771	ADAGIO-CS	Cobblestone Liner
H5772	ADAGIO-ST	Stucco Liner

(ref. Form # 750,232M)



Arch Black Facade*
Arch Brushed Nickel Facade*

* A filigree inset kit is also required - sold separately



Iron Gate Facade
Copper Gate Facade

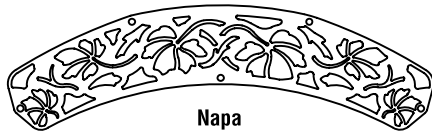
Facade Kits

These decorative facade kits are offered in two attractive styles.

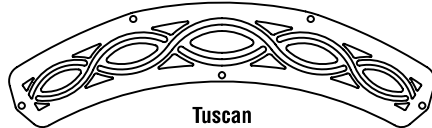
Facade Kits *		
Cat. No.	Model	Description
H5773	ADAGIO-RR	Arch Face-Black*
H5774	ADAGIO-RH	Arch Face-Nickel*
H5775	ADAGIO-CS	Garden Gate - Vintage Iron
H5776	ADAGIO-ST	Garden Gate - Vintage Copper

(ref. Form # 750,231M and 750,253M)

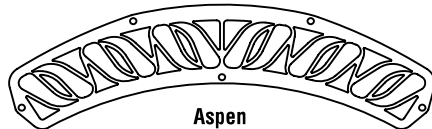
ACCESSORY COMPONENTS CONTINUED



Napa



Tuscan



Aspen



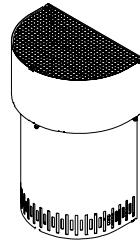
Filigree Inset Kits

These attractive filigree kits are used in conjunction with the arch facade kits.

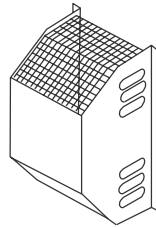
Filigree Inset Kits (Sold Separately - Required)		
H6845	ADAGIO-INSET-ASPEN-BK	Aspen, Black
H6846	ADAGIO-INSET-ASPEN-BN	Aspen, Brushed Nickel
H6847	ADAGIO-INSET-ASPEN-BKN	Aspen, Black Nickel
H6848	ADAGIO-INSET-ASPEN-G	Aspen, Gold
H6849	ADAGIO-INSET-NAPA-BK	Napa, Black
H6850	ADAGIO-INSET-NAPA-BN	Napa, Brushed Nickel
H6851	ADAGIO-INSET-NAPA-BKN	Napa, Black Nickel
H6852	ADAGIO-INSET-NAPA-G	Napa, Gold
H6853	ADAGIO-INSET-TUSCAN-BK	Tuscan, Black
H6854	ADAGIO-INSET-TUSCAN-BN	Tuscan, Brushed Nickel
H6855	ADAGIO-INSET-TUSCAN-BKN	Tuscan, Black Nickel
H6856	ADAGIO-INSET-TUSCAN-G	Tuscan, Gold

(ref. Form # 750,231M)

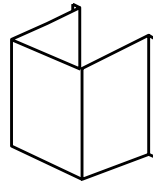
Termination Shroud
(Fits H1968)



Deluxe Termination Guard
(Fits 94L10 & H1968)



Square Termination Guard
(Fits 94L10 & H1968)



Termination Guard Kits

The vent termination guards may be used to cover the vent termination on the exterior of the home. It provides a barrier to minimize the possibility of direct contact with the hot termination surface.

Termination Guard Kits (all models)		
Cat. No.	Model No.	Description
17M52	SV4.5HGS-1	Termination Guard, Square
87L02	SV4.5HGS	Termination Guard, Deluxe
H5820	4.5HTSK	Termination Shroud (Guard) for Horizontal Square Termination

(ref. Form # 750,109M and 750,055M)

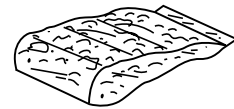


Touch-Up Paint Kit

Repair of minor scratches and discoloration of the appliance black painted surfaces may be accomplished with the touch-up paint kit.

Touch-Up Paint Kits (all models)		
Cat. No.	Model No.	Description
90L73	FTPK-B	Touch-Up Paint (Black)

(ref. Form # 750,050M)



Bag of Glowing Embers

Replacement ember materials are available for use with these appliances. Order a bag of glowing embers, model FGE to replace ember materials as part of the periodic maintenance of the appliance.

Bag of Glowing Embers		
Cat. No.	Model No.	Description
88L53	FGE	Bag of Glowing Embers

(ref. Form # 750,010M)

REPLACEMENT PARTS LIST

Item	Cat. No.	Description	Where Used
1	H1237	Log Set	All Models
2	H1240	Glass Door Assembly Front	All Models
3	H1243	Door Latch Assembly	All Models
4	H1242	Gas Burner	All Models
5	93L32	Flex Gas Line With Shut-off	All Models
6	H1241	Gas Line, Valve To Burner	All Models
**	H3470	Air Shutter Rod	All Models
**	43K85	Gasket Venturi Tube Mounting	All Models
7	H1251	Standoff	All Models
8	H1202	Spacer, Front	All Models
9	H1250	Heat Shield	All Models
10	H1247	Bracket, Gas Train	All Models
11	H1249	Pilot Bracket	All Models
12	H1248	Baffle, Burner	All Models
13	H6048	Junction Box Assembly	All Models
14	H1238	Piezo Bracket	All Models
15	27K30	Switch, Rocker	All Models
16	10K86	Piezo Igniter	All Models
**	H6212	Electrode Cable	All Models
17	H1255	Bracket Air Control	All Models
18	H1254	Log Support Bracket	All Models
19	21L63	Gas Valve Brass Fitting Elbow	All Models
20	H1208	Burner Brass Fitting	All Models
21	H3737	Pilot Shield	All Models

Contact an Authorized Lennox Hearth Products dealer to obtain any of these parts. Never use substitute materials. Use of non-approved parts can result in poor performance and safety hazards.

WARNING

Failure to position the parts in accordance with these diagrams or failure to use only parts specifically approved with this appliance may result in property damage or personal injury.

AVERTISSEMENT

Risque de dommages ou de blessures si les pièces ne sont pas installées conformément à ces schémas et ou si des pièces autres que celles spécifiquement approuvées avec cet appareil sont utilisées.

Gas Controls - SIT Millivolt

Item #	Description	Natural Gas		Propane Gas	
		Part No.	Qty.	Part No.	Qty.
22	Gas Train Assembly, Millivolt	H1244	1	H1245	1
23	Gas Valve, SIT	H6209	1	88J53	1
24	Pilot Assembly	69L17	1	69L18	1
**	Pilot Generator	60J79	1	60J79	1
25	Pilot Tube	74L56	1	74L56	1
26	Thermocouple	74L57	1	74L57	1
27	Burner Orifice	H0922	1	H1236	1
**	Electrode and Cable	H6212	1	H6212	1

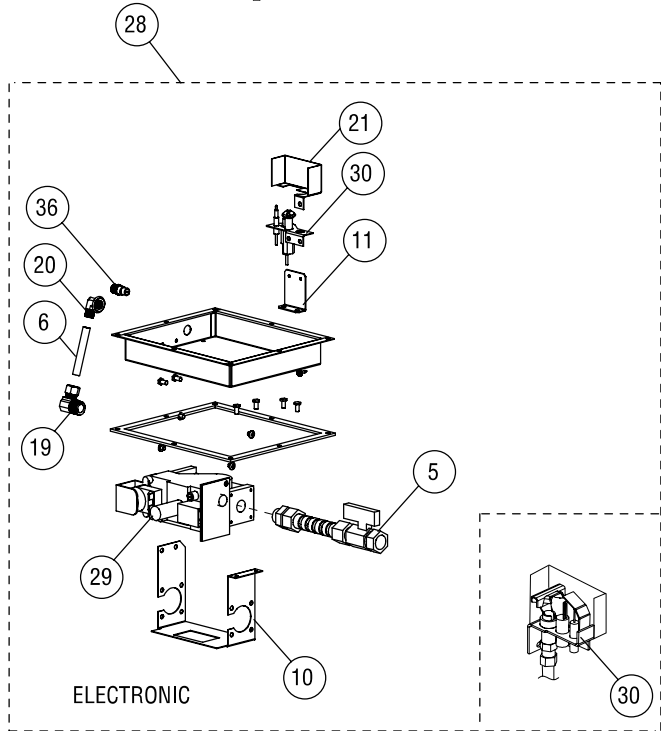
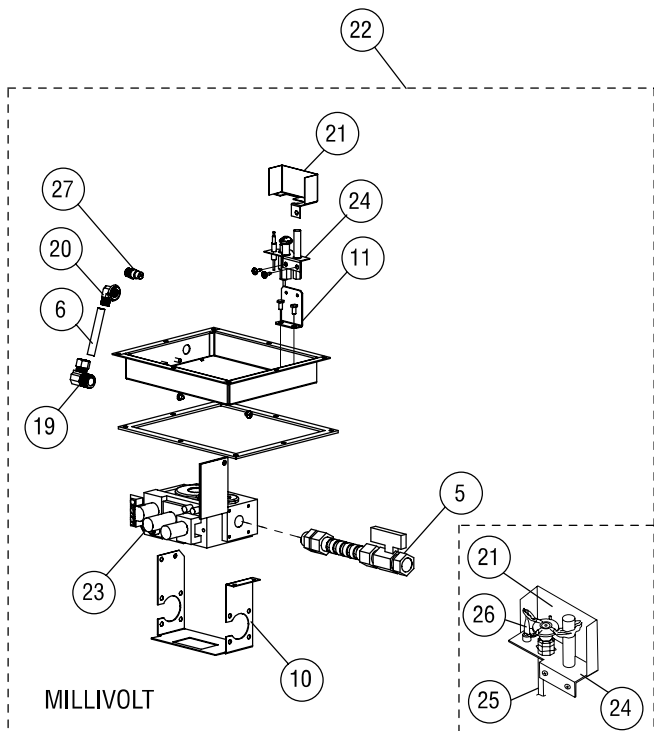
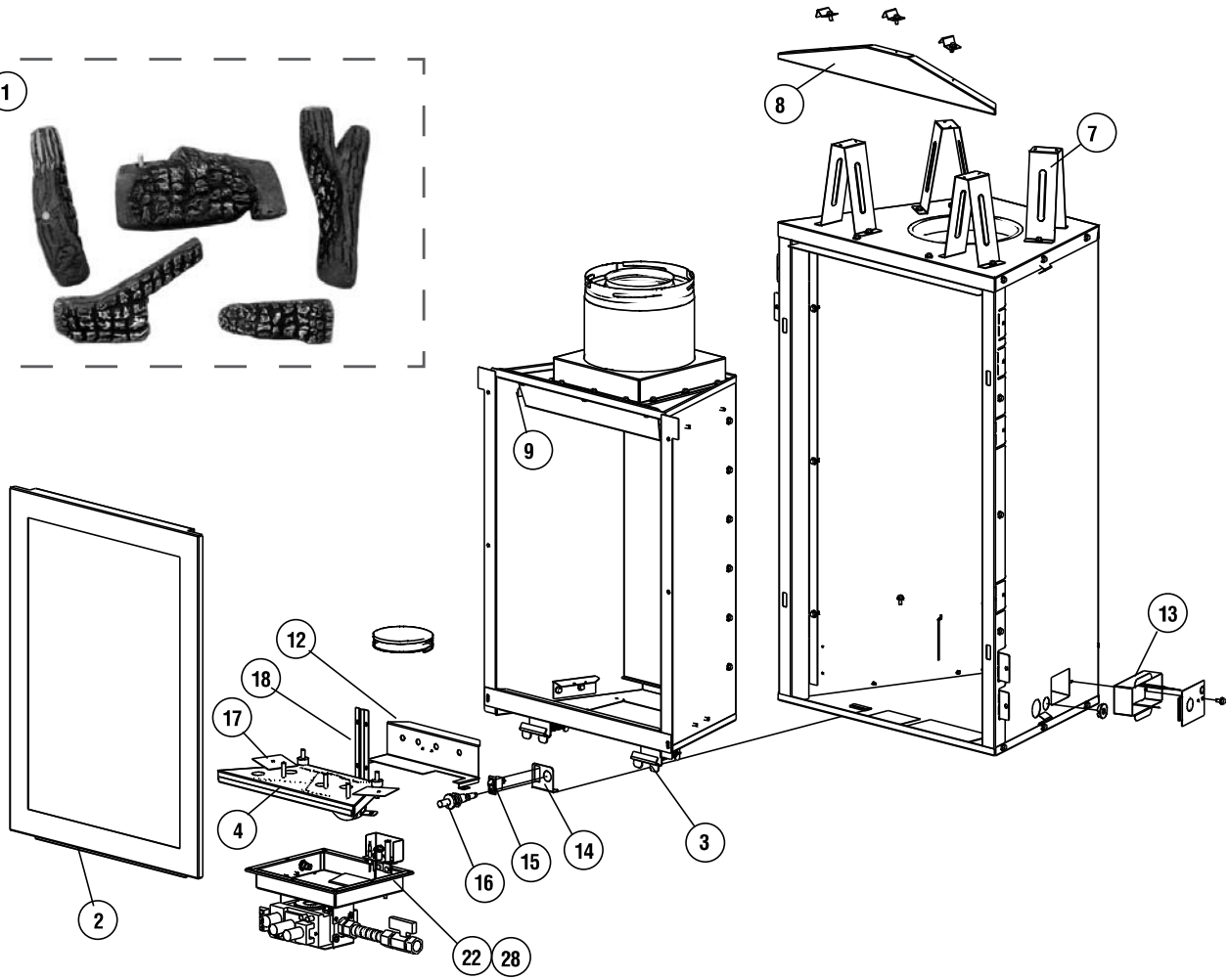
Gas Controls - SIT Electronic

Item #	Description	Natural Gas		Propane Gas	
		Part No.	Qty.	Part No.	Qty.
28	Gas Train Assembly, Electronic	H1246	1	See Note ①	1
29	Gas Valve, SIT	99K88	1	99K89	1
30	Pilot Assembly	H2298	1	See Note ②	1
36	Burner Orifice	H0922	1	H1236	1
**	Transformer	42J32	1	42J32	1
**	Ignition Module (with wire harness)	H1167	1	H1167	1

① If a propane gas train assembly is needed, order catalog number H1246 (NG gas train assembly) as well as conversion kit, cat. no. H5780

② If a propane gas pilot assembly is needed, order H2298 (NG pilot assembly) as well as conversion kit, cat. no. H5780

REPLACEMENT PARTS DIAGRAMS



NOTE: DIAGRAMS & ILLUSTRATIONS ARE NOT TO SCALE.