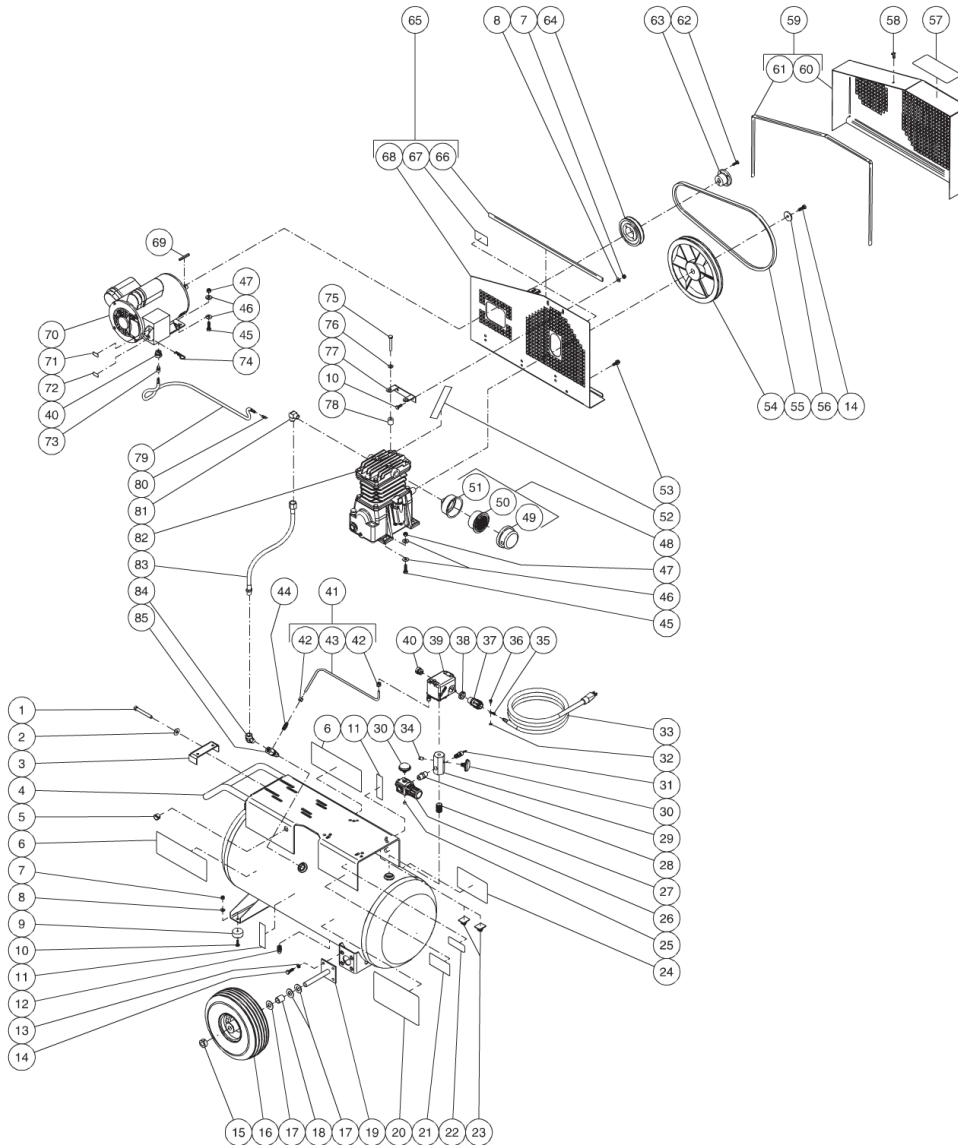




AC1-PE15-20M1 / AC1-PE15-20M1 (sn:20035391-99999999)

## TANK ASSEMBLY



Id	Item #	Description	Quantity
1	27-0576	BOLT	1
2	28-0023	FLATWASHER	1
3	20-0614A01	BELT TIGHTENER BRACKET	1
4	N/A	TANK ASSEMBLY	1
5	32-0465	BUSHING	1
6	34-0828	DECAL- LOGO	2

<b>Id</b>	<b>Item #</b>	<b>Description</b>	<b>Quantity</b>
7	30-0155	LOCKNUT	4
8	28-0002	WASHER	4
9	14-0069	ISOLATOR	2
10	27-0015	SCREW	6
11	N/A Sep.	DECAL- TANK DRAIN (SEE 34-9016)	2
12	23-0312	PETCOCK	1
13	29-0007	LOCKWASHER	8
14	27-0067	BOLT	9
15	33-0351	SHAFT	2
16	14-0017	WHEEL	2
17	28-0008	WASHER	6
18	20-0313A01	AXLE SPACER	2
19	20-0670A01	AXLE BRACKET	2
20	N/A Sep.	DECAL- DANGER/WARN/CAUT (SEE 34-9016)	1
21	N/A	DECAL- DATA PLATE	1
22	N/A Sep.	DECAL- WARNING: RISK OF BURNS (SEE 34-9016)	1
23	33-0264	WIRE CLIP	2
24	N/A Sep.	DECAL- MAINTENANCE INSTRUCTIONS (SEE 34-9016)	1
25	24-0082	REGULATOR PLUG	1
26	22-0231	ADJUSTABLE REGULATOR	1
27	24-0174	NIPPLE	1
28	24-0010	NIPPLE	1
29	24-0264	MANIFOLD BLOCK	1
30	22-0271	PRESSURE GAUGE	2
31	22-0228	SAFETY VALVE	1
32	28-1009	LOCKWASHER	3
33	32-0754	CORD PLUG SET	1
34	24-0082	PLUG	1
35	32-0099	TERMINAL RING	3
36	27-8933	SCREW	1
37	32-0766	CORD STRAIN RELIEF	1
38	32-0108	LOCKNUT	1
39	22-0232	PRESSURE SWITCH	1
40	9-0045	BUSHING	2
41	854-0057	TUBE ASSEMBLY (INC. 42-43)	1
42	23-0315	COMPRESSION NUT	2
43	54-0034	TUBE *(TWO FEET REQUIRED)	1
44	23-0328	ADAPTER	1
45	27-0068	BOLT	8

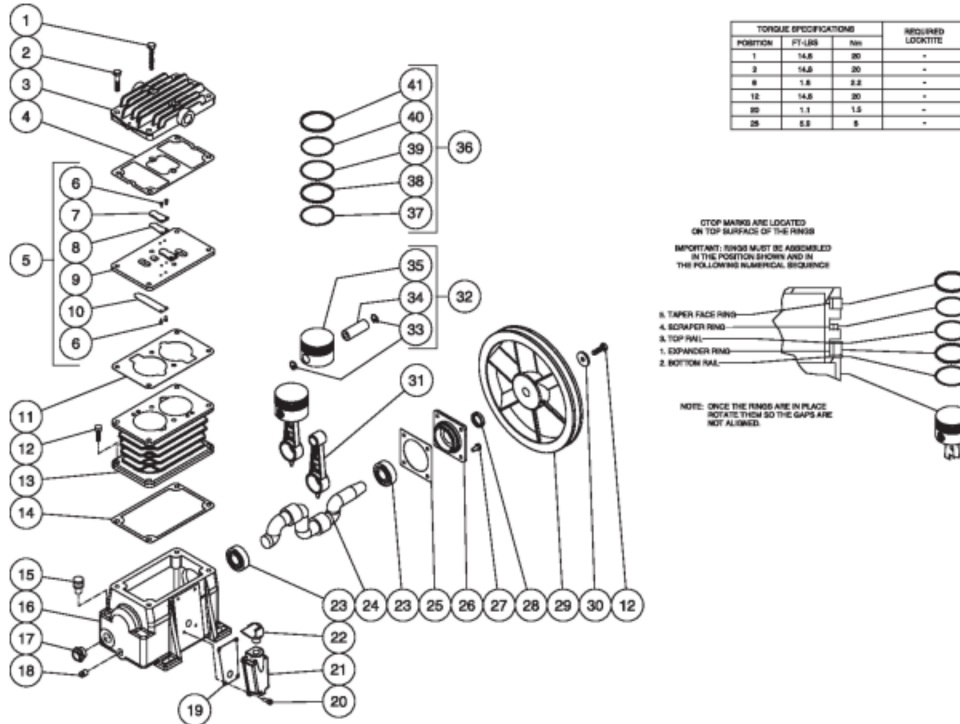
<b>Id</b>	<b>Item #</b>	<b>Description</b>	<b>Quantity</b>
46	28-0022	WASHER	16
47	30-0157	LOCKNUT	8
48	19-0083	AIR FILTER ASSEMBLY (INC. 49-51)	1
49	19-0084	FRONT FILTER HOUSING	1
50	19-0082	FILTER REPLACEMENT	1
51	N/A Sep.	REAR FILTER HOUSING (SEE 19-0083)	1
52	N/A Sep.	DECAL- CHECK OIL TAPE (SEE 34-9016)	1
53	27-9524	BOLT	3
54	10-0115	FLYWHEEL W/COMPRESSOR	1
55	11-0011	DRIVE BELT	1
56	28-1032	FLATWASHER FLYWHEEL W/COMPRESSOR	1
57	N/A Sep.	DECAL- OPERATION INSTRUCTIONS (SEE 34-9016)	1
58	33-0197	FASTENER	1
59	854-0009	BELTGUARD ASSEMBLY (INC. 60-61)	1
60	N/A Sep.	BELTGUARD COVER (SEE 854-0009)	1
61	33-0020	EDGING *(FOUR FEET REQUIRED)	1
62	27-0015	BOLT W/BUSHING	2
63	9-0037	BUSHING	1
64	10-0099	SHEAVE	1
65	854-0007	BELTGUARD BACK ASSEMBLY (INC. 66-68)	1
66	33-0020	EDGING *(TWO FEET REQUIRED)	1
67	N/A Sep.	DECAL- WARNING: BELTGUARD IN PLACE (SEE 34-9016)	1
68	N/A Sep.	BELTGUARD BACK (SEE 854-0007)	1
69	43-0073	KEY	1
70	2-0136	MOTOR- 1.5 HP	1
71	N/A Sep.	DECAL- 230 VOLT (SEE 34-9016)	1
72	N/A Sep.	DECAL- 115 VOLT (SEE 34-0897)	1
73	32-0359	CRIMPED WIRE	2
74	43-0111	COTTER PIN	1
75	27-0072	SCREW	2
76	28-0003	WASHER	2
77	20-0574A01	SUPPORT BRACKET	1
78	33-0358	SPACER	2
79	32-0445	CORD *(THREE FEET REQUIRED)	1
80	32-0003	TERMINAL FORK	4
81	23-0426	ELBOW	1
82	3-0215	PUMP	1
83	15-0236	HOSE	1
84	24-0042	ELBOW	1

<b>Id</b>	<b>Item #</b>	<b>Description</b>	<b>Quantity</b>
85	22-0334	CHECK VALVE	1
	34-9016	DECAL KIT (INC. 11, 20, 22, 24, 52, 57, 67, 71-72) *MUST ORDER IN ONE FOOT LENGTHS	



AC1-PE15-20M1 / AC1-PE15-20M1 (sn:20035391-99999999)

## PUMP



Id	Item #	Description	Quantity
1	27-0071	SCREW	2
2	27-0069	SCREW	4
3	46-1199	CYLINDER HEAD	1
4	N/A Sep.	HEAD GASKET (SEE 70-0326)	1
5	46-0952	VALVE PLATE ASSEMBLY (INC. 6-10)	2
6	N/A Sep.	VALVE SCREW (SEE 70-0327)	8
7	N/A Sep.	VALVE STOP (SEE 70-0327)	2
8	N/A Sep.	OUTLET REED VALVE (SEE 70-0327)	2
9	N/A	VALVE PLATE	1
10	N/A Sep.	INLET REED VALVE (SEE 70-0327)	2
11	N/A Sep.	CYLINDER VALVE PLATE GASKET (SEE 70-0326)	1
12	27-0067	SCREW	5
13	46-0953	CYLINDER	1
14	N/A Sep.	CYLINDER TO CRANKCASE GASKET (SEE 70-0326)	1

<b>Id</b>	<b>Item #</b>	<b>Description</b>	<b>Quantity</b>
15	46-1144	OIL FILL PLUG	1
16	46-1194	CRANKCASE	1
17	46-1145	OIL SIGHT GLASS	1
18	24-0082	PLUG	1
19	26-0292	GASKET	1
20	27-8885	BOLT	4
21	46-1195	COVER	1
22	46-1196	ELBOW	1
23	48-0016	BEAR BALL	2
24	46-0955	CRANKSHAFT	1
25	N/A Sep.	FLANGE GASKET (SEE 70-0326)	1
26	46-0957	FLANGE	1
27	27-0014	SCREW	4
28	26-0246	SHAFT OIL SEAL	1
29	10-0115	FLYWHEEL	1
30	N/A Sep.	WASHER W/CRANKSHAFT (SEE 46-0955)	1
31	46-0958	CONNECTING ROD	2
32	70-0329	PISTON KIT (INC. 33-35)	2
33	N/A Sep.	SNAP RING (SEE 70-0329)	4
34	N/A Sep.	WRIST PIN (SEE 70-0329)	2
35	N/A Sep.	PISTON (SEE 70-0329)	2
36	70-0328	PISTON SEALS KIT (INC. 37-41)	2
37	N/A Sep.	BOTTOM RAIL (SEE 70-0328)	2
38	N/A Sep.	EXPANDER RING (SEE 70-0328)	2
39	N/A Sep.	TOP RAIL (SEE 70-0328)	2
40	N/A Sep.	SCRAPER PISTON RING (SEE 70-0328)	2
41	N/A Sep.	TAPER FACE PISTON RING (SEE 70-0328)	2
KIT	70-0326	GASKET KIT (INC. 4, 11, 14, 25)	
KIT	70-0327	VALVE PLATE KIT (INC. 6-8, 10)	
KIT	70-0328	PISTON SEALS KIT (INC. 37-41)	
KIT	70-0329	PISTON KIT (INC. 33-35)	