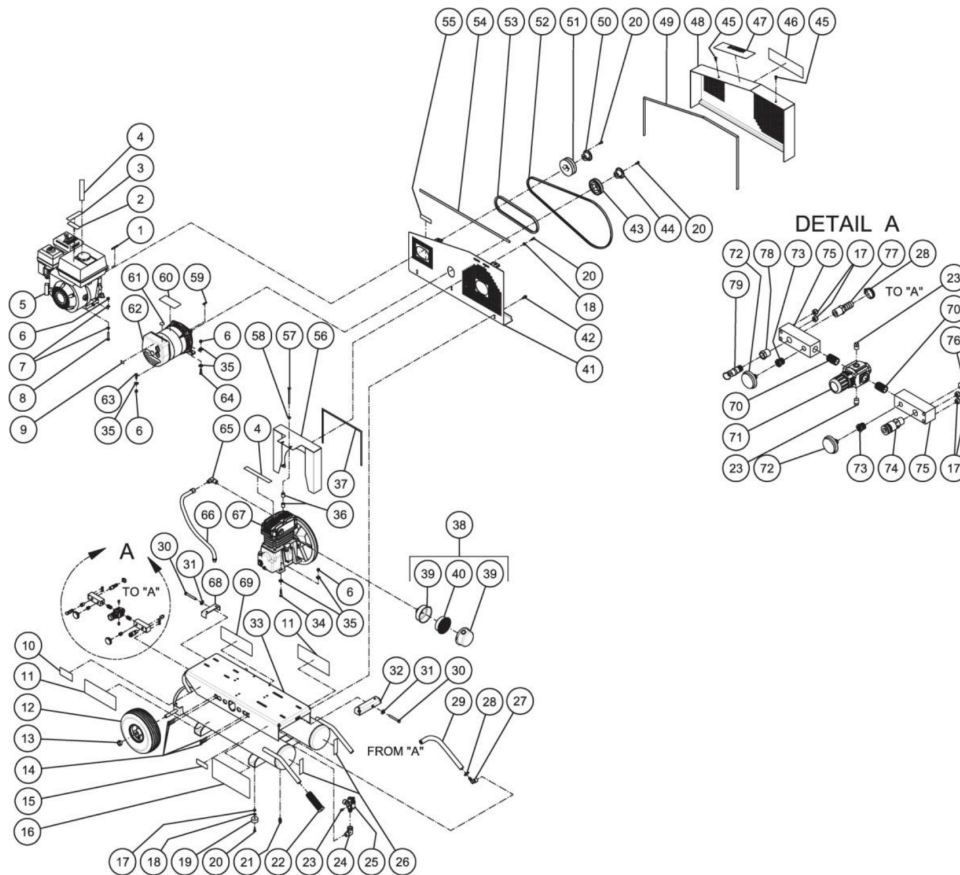




AG1-PH65-08M / AG1-PH65-08M (sn:20068391-99999999)

TANK ASSEMBLY



Id	Item #	Description	Quantity	Rev	Comments
1	43-0073	KEY	1		
2	N/A Sep.	DECAL- CAUTION: RISK OF FIRE (SEE 34-9036)	1		
3	N/A Sep.	DECAL- CHECK OIL TAPE (SEE 34-9036)	2		
4	N/A Sep.	DECAL- WARNING: RISK OF BURNS (SEE 34-9036)	1		
5	1-0088	ENGINE- 6.5 HP HONDA	1		
6	30-0157	LOCKNUT	11		
7	28-0003	WASHER	8		
8	27-0070	BOLT	4		
9	N/A Sep.	DECAL- 115V (SEE 34-9036)	1		
10	N/A	DECAL- DATA PLATE	1		
11	34-0828	DECAL- LOGO	1		

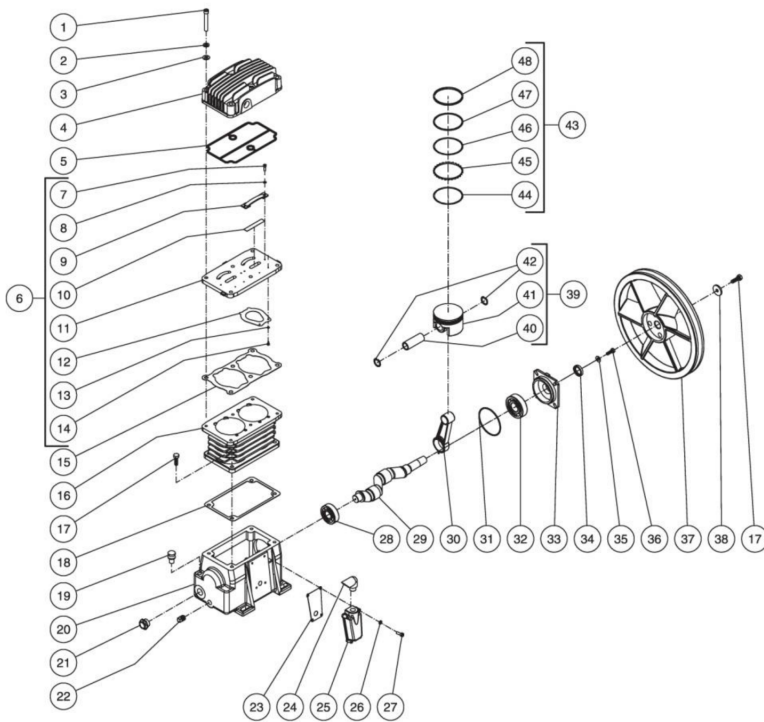
Id	Item #	Description	Quantity	Rev	Comments
12	14-0017	WHEEL	2		
13	33-0351	COLLAR/SHAFT	2		
14	27-0019	BOLT	4		
15	N/A Sep.	DECAL- WARNING: RISK OF BURNS (SEE 34-9036)	2		
16	N/A Sep.	DECAL- WARNING/OPERATIONS (SEE 34-9036)	1		
17	30-0155	LOCKNUT	6		
18	28-0002	WASHER	6		
19	14-0069	ISOLATOR	2		
20	27-0015	BOLT	10		
21	23-0312	PETCOCKS	2		
22	7-0059	HANDLE GRIP	2		
23	24-0082	PLUG	3		
24	24-0006	ELBOW	1		
25	22-0346	PILOT VALVE	1		
26	N/A Sep.	DECAL- TANK DRAIN (SEE 34-9036)	2		
27	23-0418	ELBOW	1		
28	42-0011	HOSE CLAMP	2		
29	15-0007	HOSE *(TWO FEET REQUIRED)	1		
30	27-0576	BOLT	2		
31	28-0023	FLATWASHER	2		
32	20-0814A01	BRACKET TIGHTENER	1		
33	N/A	TANK	1		
34	27-0069	BOLT	4		
35	28-0022	WASHER	13		
36	33-0358	SPACER	4		
37	26-0240	GASKET	1		
38	19-0240	AIR FILTER ASSEMBLY	1		
39	N/A	AIR FILTER CANISTER	1		
40	19-0220	FILTER REPLACEMENT	1		
41	6-0117A01	BELTGUARD BACK ASSEMBLY	1		
42	27-9524	BOLT	3		
43	10-0049	SHEAVE	1		
44	9-0033	BUSHING	1		
45	33-0197	FASTENER	2		
46	N/A Sep.	DECAL- OPERATING INSTRUCTIONS (SEE 34-9036)	1		
47	N/A Sep.	DECAL- WARNING CARBON MONOXIDE (SEE 34-9036)	1		
48	6-0105A01	BELTGUARD COVER	1		
49	33-0020	EDGING *(FIVE FEET REQUIRED)	1		
50	9-0009	BUSHING	1		

Id	Item #	Description	Quantity	Rev	Comments
51	10-0067	SHEAVE	1		
52	11-0064	DRIVE BELT	1		
53	11-0034	DRIVE BELT	1		
54	33-0020	EDGING *(THREE FEET REQUIRED)	1		
55	N/A Sep.	DECAL- WARNING: BELTGUARD (SEE 34-9036)	1		
56	20-0916A01	AIR SHROUD	1		
57	27-0079	BOLT	2		
58	29-0007	LOCKWASHER	2		
59	43-0085	KEY	1		
60	N/A Sep.	DECAL- WARNING: ELECTROCUTION (SEE 34-9036)	1		
61	N/A Sep.	DECAL- GROUND PICTORIAL (SEE 34-9036)	1		
62	32-0802	GENERATOR	1		
63	27-0067	BOLT	1		
64	27-0068	BOLT	2		
65	24-0074	ELBOW	1		
66	15-0246	HOSE	1		
67	3-0280	PUMP	1		
68	20-0614A01	BELT TIGHTENER BRACKET	1		
69	N/A Sep.	DECAL- MAINTENANCE INSTRUCTIONS (SEE 34-9036)	1		
70	24-0175	NIPPLE	2		
71	22-0231	ADJUSTABLE REGULATOR	1		
72	22-0257	PRESSURE GAUGE	2		
73	23-0111	REDUCER	2		
74	17-0068	QUICK CONNECT SOCKET	1		
75	51-0033	MANIFOLD BLOCK	2		
76	24-0034	PLUG	1		
77	23-0105	HOSE BARB	1		
78	23-0017	BUSHING	1		
79	22-0228	SAFETY RELIEF VALVE	1		
	34-9036	SAFETY DECAL KIT (INC. 2-4, 9, 15-16, 26, 46-47, 55, 60-61, 69)			
		*MUST ORDER IN ONE FOOT LENGTHS			



AG1-PH65-08M / AG1-PH65-08M (sn:20068391-99999999)

PUMP ASSEMBLY



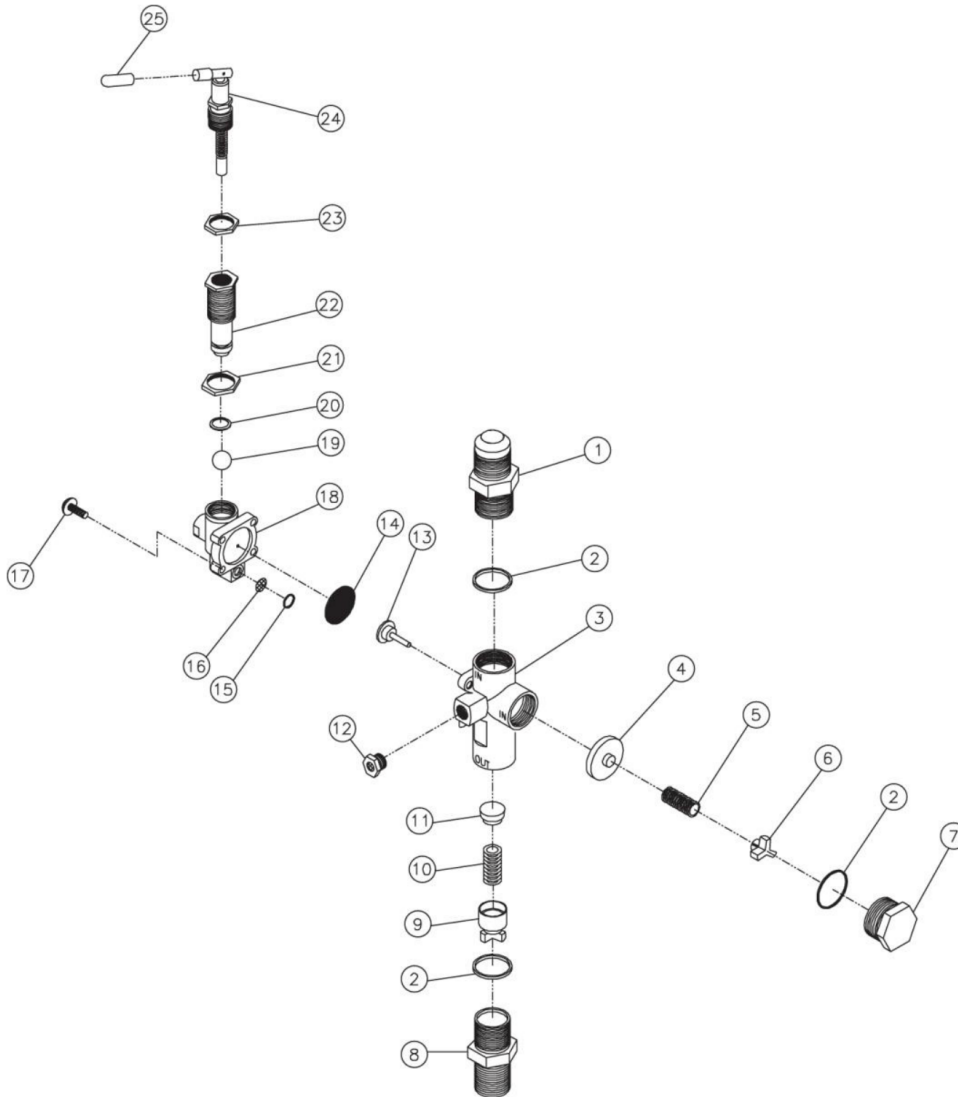
Id	Item #	Description	Quantity	Rev	Comments
1	27-0827	BOLT	6		
2	29-0007	LOCKWASHER	6		
3	28-0003	WASHER	6		
4	46-1236	CYLINDER HEAD	1		
5	N/A Sep.	GASKET (SEE 70-0453)	1		
6	70-0454	VALVE PLATE KIT (INC. 7-14)	1		
7	N/A Sep.	BOLT (SEE 70-0454)	4		
8	N/A Sep.	WASHER (SEE 70-0454)	4		
9	N/A Sep.	VALVE STOP (SEE 70-0454)	2		
10	N/A Sep.	OUTLET REED VALVE (SEE 70-0454)	2		
11	46-1235	VALVE PLATE	1		
12	N/A Sep.	INLET REED VALVE (SEE 70-0454)	2		
13	N/A Sep.	WASHER (SEE 70-0454)	4		

Id	Item #	Description	Quantity	Rev	Comments
14	N/A Sep.	VALVE SCREW (SEE 70-0454)	4		
15	N/A Sep.	GASKET (SEE 70-0453 OR 70-0454)	1		
16	46-1234	CYLINDER	1		
17	27-0067	BOLT	5		
18	N/A Sep.	CRANKCASE GASKET (SEE 70-0453)	1		
19	46-1144	OIL FILL PLUG	1		
20	46-1233	CRANKCASE	1		
21	46-1145	OIL SIGHT GLASS	1		
22	24-0009	PLUG	1		
23	26-0292	LABYRINTH COVER GASKET	1		
24	46-1241	LABYRINTH COVER ELBOW	1		
25	46-1242	LABYRINTH COVER	1		
26	28-1009	LOCKWASHER	4		
27	27-8885	BOLT	4		
28	48-0086	BALL BEARING	1		
29	46-1237	CRANKSHAFT	1		
30	46-1239	CONNECTING ROD	2		
31	N/A Sep.	O-RING (SEE 70-0453)	1		
32	48-0087	BALL BEARING	1		
33	46-1240	FLANGE	1		
34	26-0246	OIL SEAL SHAFT	1		
35	28-0002	WASHER	4		
36	27-0015	BOLT	4		
37	10-0136	SHEAVE	1		
38	N/A	WASHER	1		
39	46-1238	PISTON ASSEMBLY (INC. 40-42)	1		
40	N/A Sep.	WRIST PIN (SEE 46-1237 OR 46-1238)	2		
41	N/A Sep.	PISTON (SEE 46-1237 OR 46-1238)	2		
42	N/A Sep.	SNAP RING (SEE 46-1237 OR 46-1238)	4		
43	70-0452	RING KIT (INC. 44-48)	1		
44	N/A Sep.	BOTTOM RAIL (SEE 70-0452)	2		
45	N/A Sep.	ENPANDER RING (SEE 70-0452)	2		
46	N/A Sep.	TOP RAIL (SEE 70-0452)	2		
47	N/A Sep.	PISTON RING SCRAPER (SEE 70-0452)	2		
48	N/A Sep.	PISTON RING TAPER FACE (SEE 70-0452)	2		
KIT	70-0454	VALVE PLATE (INC. 7-14)			
KIT	70-0453	GASKET (INC. 5, 15, 18, 31)			
KIT	46-1237	PISTON ASSEMBLY (INC. 40-42)			
KIT	70-0452	PISTON RINGS (INC. 44-48)			



AG1-PH65-08M / AG1-PH65-08M (sn:20068391-99999999)

PILOT VALVE



Id	Item #	Description	Quantity	Rev	Comments
1	N/A	INLET PORT FITTING	1		
2	N/A Sep.	O-RING (SEE 70-0241)	3		
3	N/A	MAIN BODY	1		
4	N/A Sep.	PISTON ASSEMBLY-UNLOADER VALVE (SEE 70-0241)	1		
5	N/A Sep.	SPRING-UNLOADER VALVE (SEE 70-0241)	1		
6	N/A	SPRING SEAT-UNLOADER VALVE	1		
7	N/A	CAP	1		

Id	Item #	Description	Quantity	Rev	Comments
8	N/A	DISCHARGE PORT FITTING	1		
9	N/A	SPRING SEAT ASSEMBLY-CHECK VALVE	1		
10	N/A Sep.	SPRING-CHECK VALVE (SEE 70-0241)	1		
11	N/A Sep.	PISTON-CHECK VALVE (SEE 70-0241)	1		
12	23-0419	MUFFLER	1		
13	N/A Sep.	STEM UNLOADER (SEE 70-0241)	1		
14	N/A Sep.	DIAPHRAM (SEE 70-0241)	1		
15	N/A Sep.	O-RING (SEE 70-0241)	1		
16	N/A Sep.	SCREEN (SEE 70-0241)	1		
17	N/A	SCREW W/WASHER	4		
18	N/A	PILOT BODY	1		
19	N/A Sep.	BALL (SEE 70-0241)	1		
20	N/A Sep.	O-RING (SEE 70-0241)	1		
21	N/A	DIFFERENTIAL ADJUSTING LOCKNUT	1		
22	N/A	DIFFERENTIAL ADJUSTING NUT	1		
23	N/A	PRESSURE ADJUSTING LOCKNUT	1		
24	N/A Sep.	PRESSURE ADJUSTING TOGGLE ASSEMBLY (SEE 70-0241)	1		
25	N/A	RED TOGGLE COVER	1		
KIT	70-0241	REPAIR KIT (INC. 2 EACH 4-5, 10-11, 13-16, 19-20, 24; INC. 3 EACH 2)			