

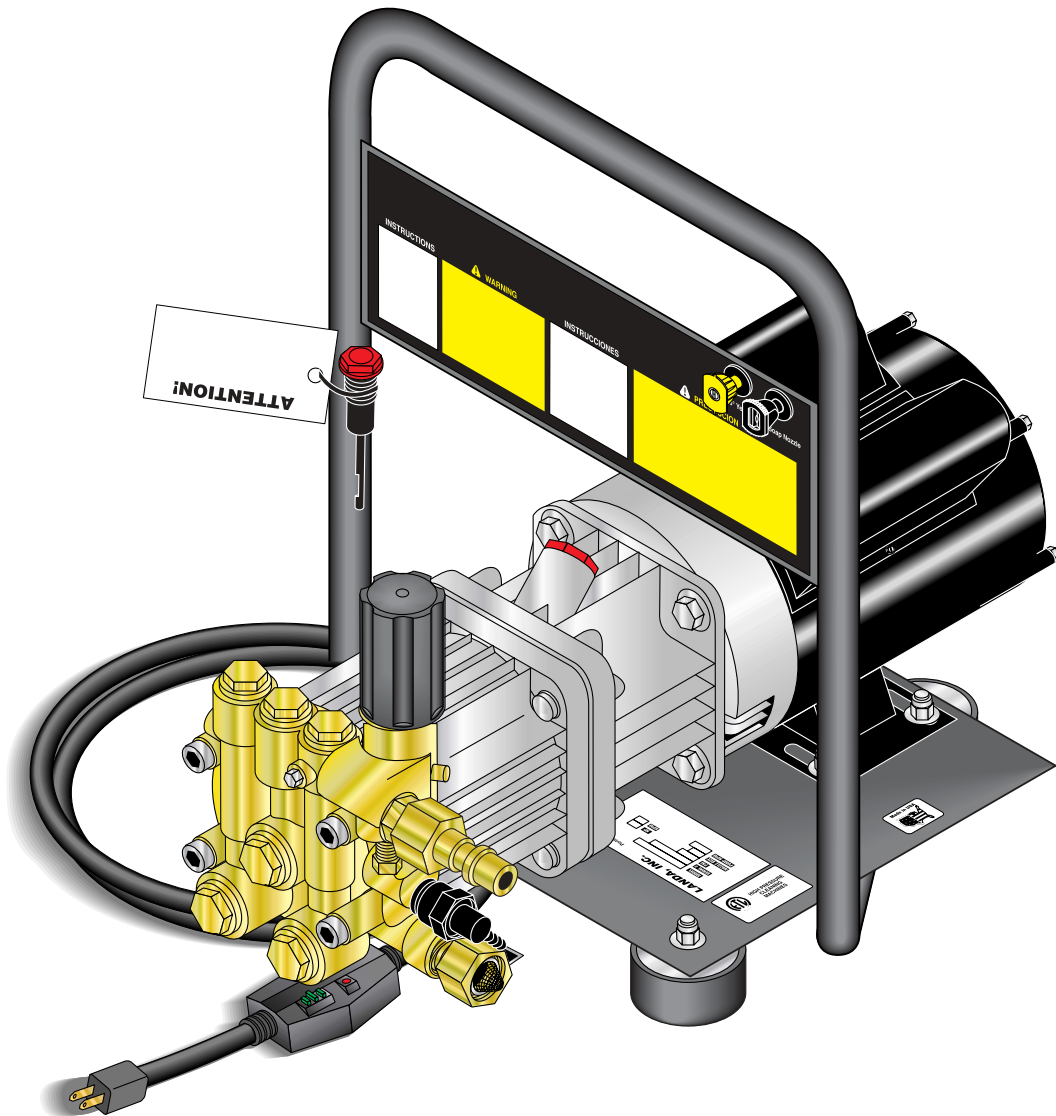


MODEL: HE

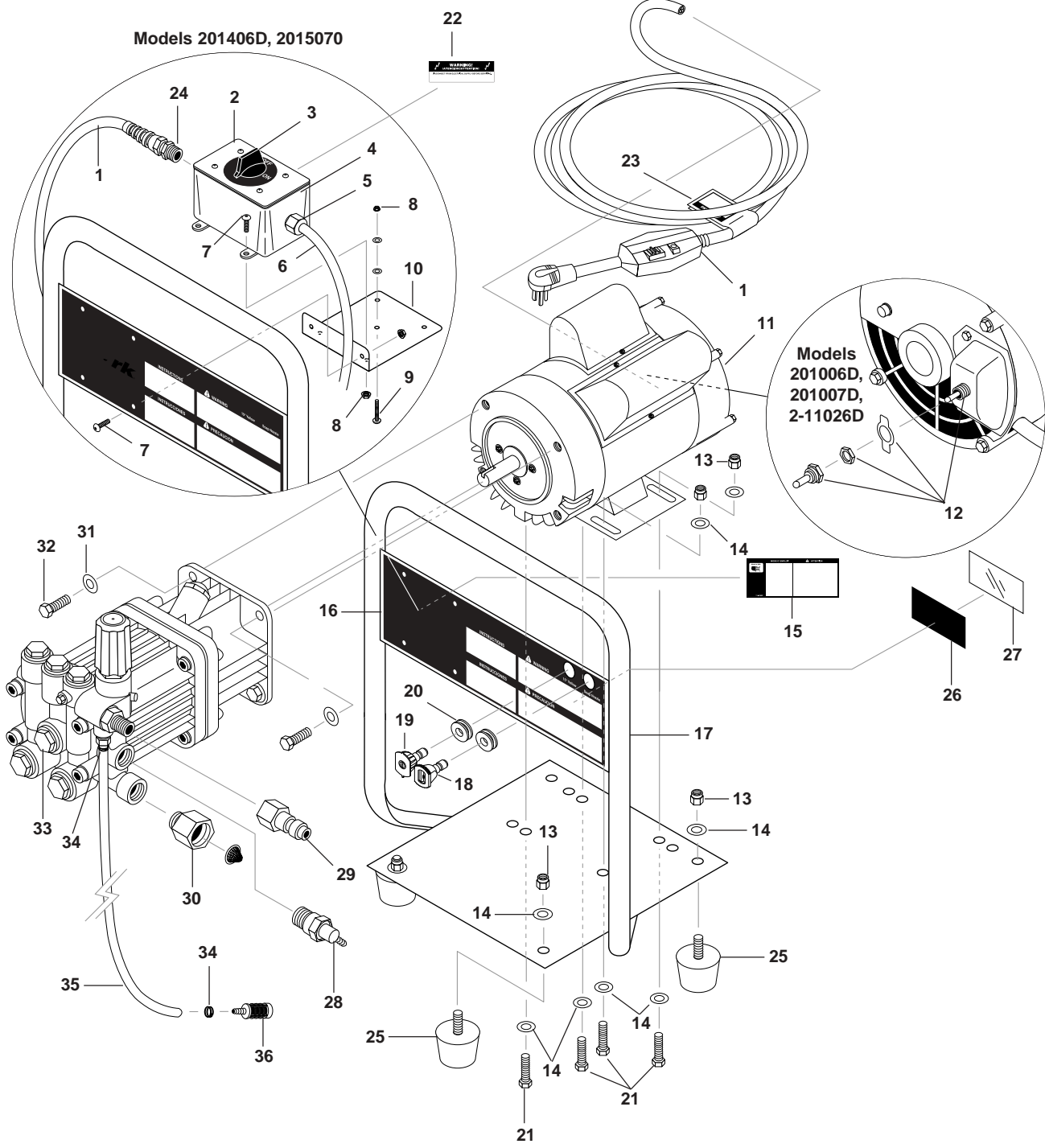
OPERATING INSTRUCTION AND PARTS MANUAL

■ HE-2010

■ HE-2015



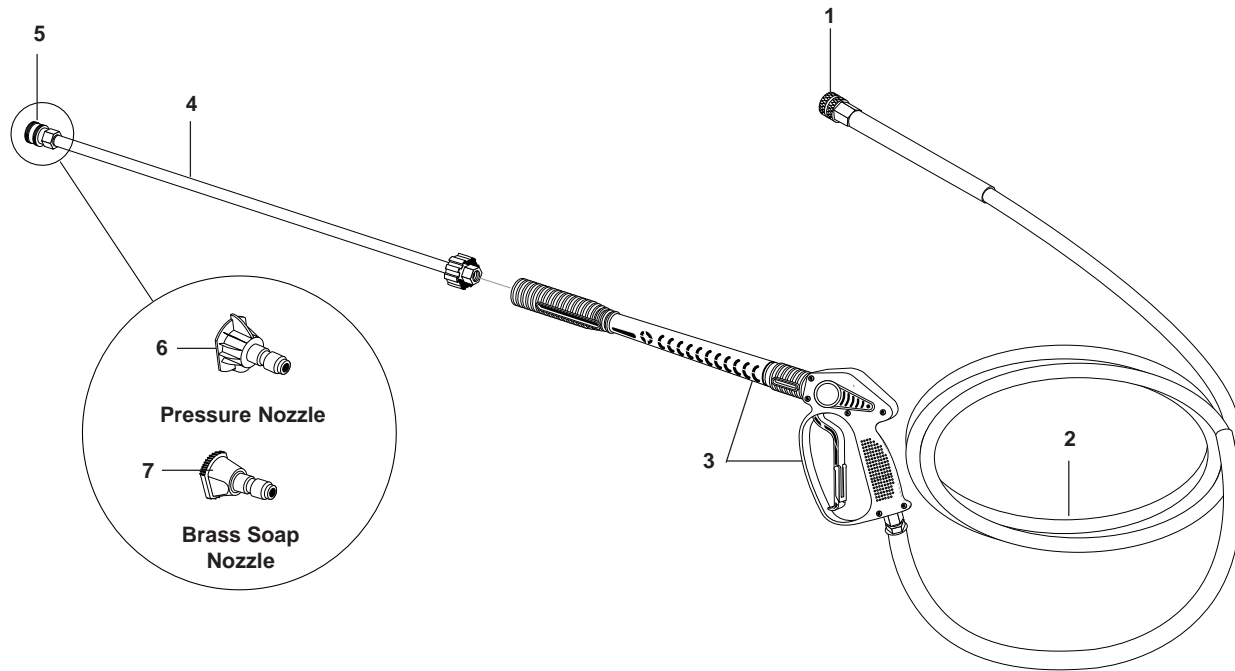
EXPLODED VIEW



EXPLODED VIEW PARTS LIST

ITEM	PART #	DESCRIPTION	QTY	ITEM	PART #	DESCRIPTION	QTY
1	6-01062	GFCI, 120V, 15 Amp w/36' 12-3 Cord (201006D, 201007D, 211026D)	1	19	4-12804015	Nozzle, SAQCMEG 1504 Yellow (201006D, 201007D, 2-11026D)	1
	6-01060	GFCI, 120V 20 Amp w/36' 12-3 Cord (201406D, 201507D)	1		4-12803015	Nozzle, SAQCMEG 1503 Yellow (201406D, 201507D)	1
2	6-03911	Lid, Plastic Carlon (201406D, 201507D)	1	20	2-0103	Grommet, Rubber, Nozzle Holder	2
3	6-020204	Switch, 2 Pos. 120V-600V (201406D, 201507D)	1	21	90-1006	Bolt, 5/16" x 3/4" NC	4
4	6-03910	Box, Plastic Carlon (201406D, 201507D)	1	22	10-08021	Label, Disconnect Power	1
	11-1042	▲ Label, Ground	1	23	10-08018	Label, Warning, Service Cord	1
5	6-051595	Strain Relief, STRT, LQ Tite Large (201406D, 201507D)	1	24	6-05154	Strain Relief 90° (201406D)	1
	6-05172	▲ Locknut, 3/4"	1		6-05181	▲ Locknut, 1/2" Conduit (201406D)	1
6	6-0104	Cord, Service, SOWA, 12/3 (201406D, 201507D)	2 ft.	25	2-01023	Mount, Vibration, 5/16"-18 x 9/16" Stud, 30 Duro	4
7	90-1991	Screw, 10/32" x 1/2" BHSOC (201406D, 201507D)	6	26	10-08016	Label, Intended For Indoor Use	1
8	90-017	Nut, 10/32" Keps (201406D, 201507D)	9	27	10-9999	Label, Clear Lexan, 2-1/4" x 4-1/2"	1
9	90-100030	Screw, 10-32" x 3/4" RH, SL, BLK (201406D, 201507D)	1	28	2-300816	Pump Protector, 3/8" PTP	1
10	95-071111118	Switch Box BRKT (201406D, 201507D)	1	29	2-2006	Nipple, 3/8" x 3/8" NPT ST Female	1
		Motor, 1.5 HP, 1 PH, 3450 RPM, C-Face (201006D, 2-11026D, 201007D)	1	30	2-10943	Swivel, 3/8" MP x 3/4" (201001D, 201501D, 301001D)	1
11	6-05152	▲ Strain Relief, STRT, LQ TITE 3 (201006D, 201007D)	1	31	90-4002	Washer, 3/8" Flat SAE	4
	6-05181A	▲ Locknut, 1/2" (201006D, 201007D)	1	32	90-1016	Bolt, 3/8" x 1", NC	4
12	5-1047	Motor, 2 HP, 1 PH, 3450 RPM, (201406D, 201407D)	1	33	5-2107	Pump, Comet AXD2020E (201006D, 201406D, 2-11026D)	1
	6-0517	▲ Strain Relief, 3/4" (201406D, 201407D)	1			5-1618	Pump, Legacy, WMH2521 (201007D, 201507D)
13	6-02049	Switch, Toggle, Assy (201006D, 201007D, 2-11026D)	1	34	2-9040	Clamp, Hose UNI .46 - .54	2
	90-2001	Nut, 5/16" ESNA, NC	8	35	4-02080000	Hose, 1/4" x 1/2" Clear Vinyl	4 ft.
14	90-4001	Washer, 5/16" Flat SAE	12	36	2-1904	Strainer, 1/4" Barb	1
15	11-0350F	Label, French Warning	1				
16	11-0314	Label, Instr. (TE Models)	1				
	11-0311	Label, Instr. (HE Models)	1				
	10-99073	Label, Instr. (ZE Models)	1				
	11-0325	Label, Instr. (ET Models)	1				
17	95-07200126	Handle Assy, Red (TE, HE, ET Models)	1				
	95-07102116	Handle Assy, Black (Model ZE)	1				
18	4-16540	Nozzle, Compl. QCEM-6540 w/Blk Nylon (Soap Nozzle)	1				

HOSE & SPRAY GUN ASSEMBLY



HOSE & SPRAY GUN ASSEMBLY PARTS LIST

ITEM	PART NO.	DESCRIPTION	QTY	ITEM	PART NO.	DESCRIPTION	QTY
1	2-2002	Coupler, 3/8" Female	1	5	2-2000	Coupler, 1/4" Female	1
	2-0121	▲ Quick Coupler O-Ring	1		2-0119	Quick Coupler O-Ring	1
2	4-0203030C	Hose, 30' x 3/8" w/Coupler (ET, ZE Models)	1	6	4-12803015	Nozzle, 3.0 15° Yellow (201406D, 201507D)	1
	4-020930BSC	Hose, 30' x 3/8" w/Coupler (HE TE Models)	1			Nozzle, 4.0 15° Yellow (201006D, 201007D)	1
3	4-011137	Spray Gun, Shut-Off (ET, ZE Models)	1	7	4-16540	Nozzle, Brass Soap	1
	4-01246	Spray Gun, Shut-Off (HE, TE Models)	1			▲ Not Shown	
4	4-011106	Wand, Straight (ET, ZE Models)	1				
	4-0110531	Wand, SS 15.5" (TE, HE Models)	1				