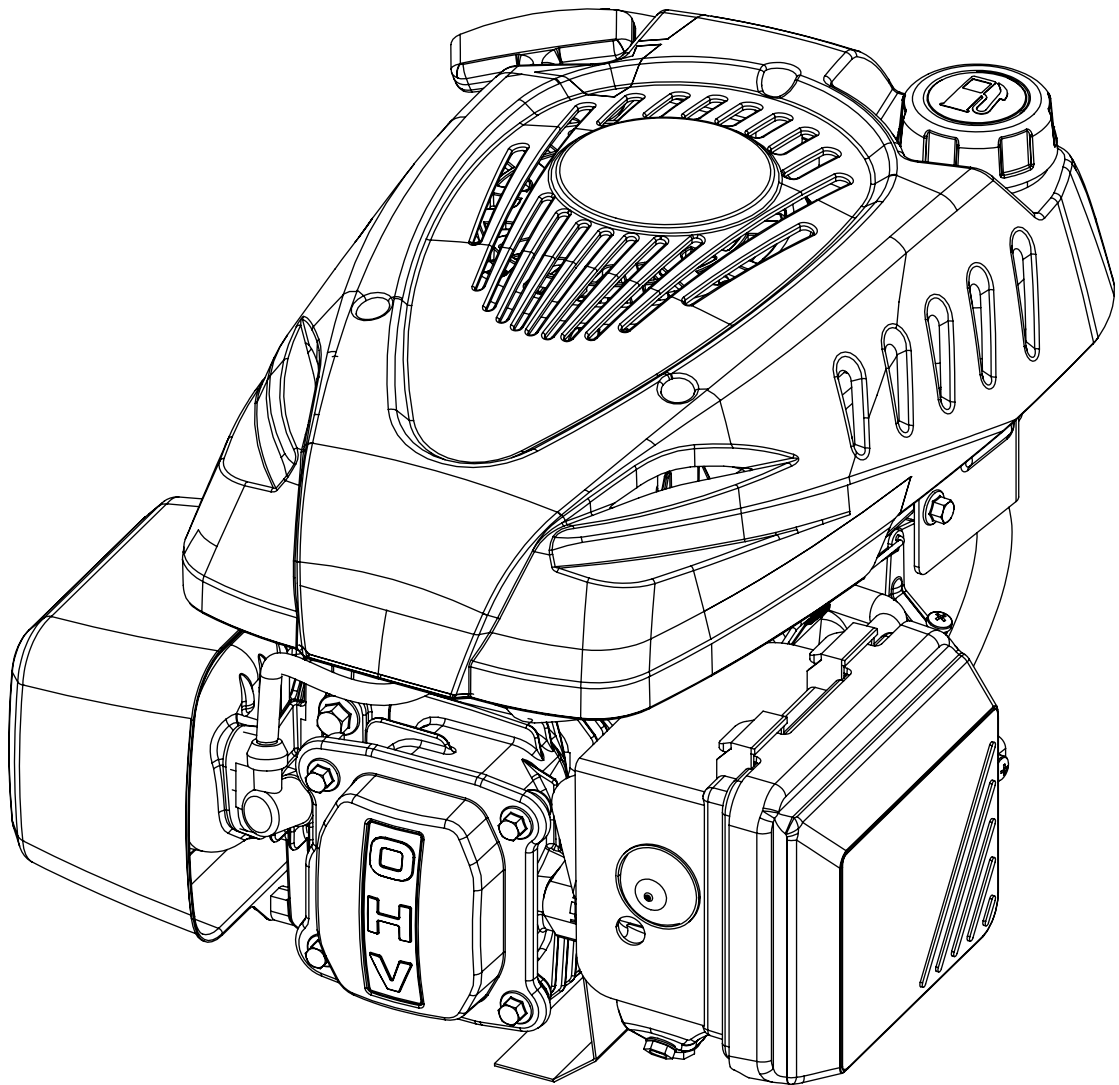
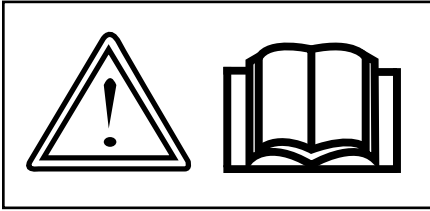


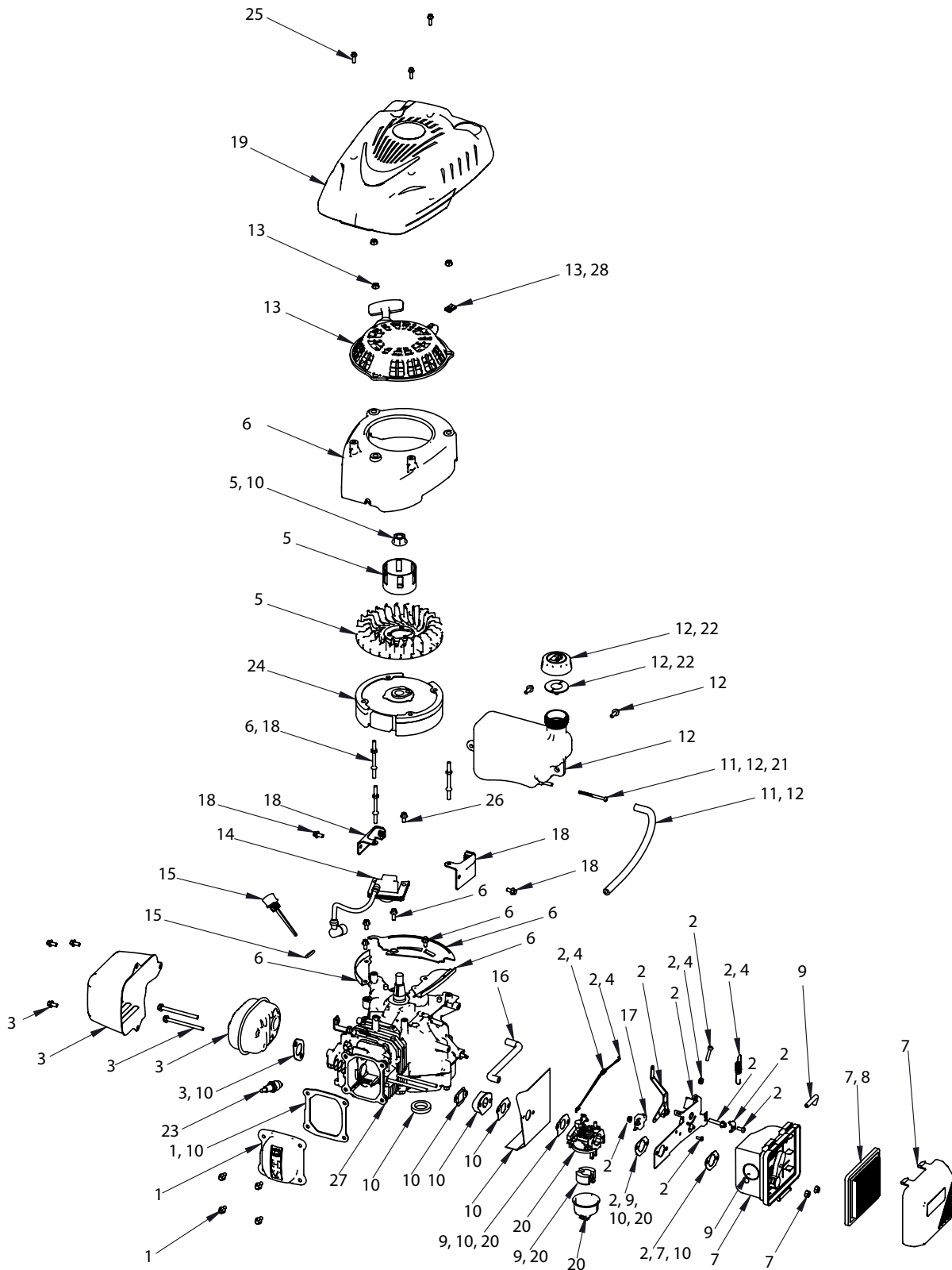


Operator's Manual
Original Operating Instructions
Viper® 163cc
4-Cycle Engine



Includes Model: 185000

PARTS BREAKDOWN
163cc ENGINE MAIN PARTS EXPLOSION



163CC ENGINE MAIN PARTS LIST

| REF NO. | PART NO. | DESCRIPTION | QTY. |
|---|----------|------------------------------------|------|
| 1 | 11211 | KIT VALVE COVER | 1 |
| 2 | 11228 | KIT THROTTLE REPLACEMENT | 1 |
| 3 | 11213 | KIT MUFFLER REPLACEMENT | 1 |
| 4 | 11216 | KIT THROTTLE CONTROL SPRINGS | 1 |
| 5 | 11217 | KIT STARTER CUP AND FAN | 1 |
| 6 | 11218 | KIT BLOWER HOUSING | 1 |
| 7 | 11222 | KIT AIR CLEANER COMPLETE | 1 |
| 8 | 10905 | FILTER ELEMENT AIR CLEANER | 1 |
| 9 | 11223 | KIT CARBURETOR TUNE UP | 1 |
| 10 | 11225 | KIT ENGINE GASKETS | 1 |
| 11 | 11226 | KIT FUEL LINE AND FILTER | 1 |
| 12 | 11227 | KIT FUEL TANK REPLACEMENT | 1 |
| 13 | 11366 | KIT RECOIL AND HARDWARE | 1 |
| 14 | 10915 | IGNITION COIL | 1 |
| 15 | 11051 | DIPSTICK WITH SEAL | 1 |
| 16 | 11009 | BREATHER TUBE | 1 |
| 17 | 11149 | SWITCH ENGINE SHUT OFF | 1 |
| 18 | 11232 | KIT MOUNTING BRACKETS AND RODS | 1 |
| 19 | 10871 | ENGINE SHROUD | 1 |
| 20 | 11233 | KIT CARBURETOR REPLACEMENT | 1 |
| 21 | 11008 | FUEL FILTER | 1 |
| 22 | 11283 | GAS CAP W/SEAL | 1 |
| 23 | 64212 | SPARK PLUG TORCH F7TC | 1 |
| OTHER PARTS (Contact customer service for ordering information) | | | |
| 24 | -- | FLYWHEEL | |
| 25 | -- | BOLT M5 X 0.8 X 16 MM HHF GR8.8 ZN | |
| 26 | -- | BOLT M6 X 1.0 X 12 HHF GR8.8 ZN | |
| 27 | -- | SHORT BLOCK | |
| 28 | -- | CLIP NUT | |

NOTE: Service kits contain multiple parts.