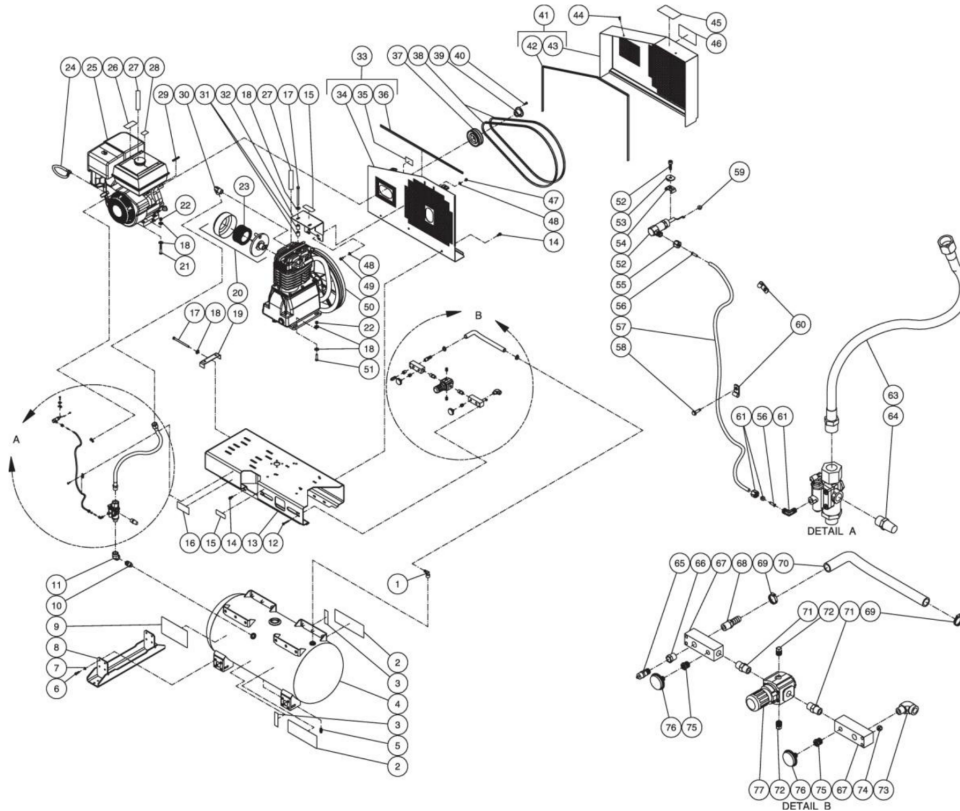




AS2-SH13-30M / AS2-SH13-30M (sn:0-99999999)

## TANK ASSEMBLY



Id	Item #	Description	Quantity	Rev	Comments
1	23-0418	ELBOW	1		
2	34-0828	DECAL- LOGO	2		
3	34-9016	DECAL- TANK DRAIN (SEE 34-9016)	2		
4	N/A	AIR TANK ASSEMBLY	1		
5	23-0312	DRAIN VALVES	1		
6	27-0067	BOLT	16		
7	29-0007	LOCKWASHER	16		
8	20-0862A01	SUPPORT FOOT ASSEMBLY	2		
9	N/A Sep.	DECAL- DANGER/WARNING/CAUTION (SEE 34-9016)	1		
10	24-0283	NIPPLE	1		
11	24-0284	ELBOW	1		
12	27-0019	BOLT	4		

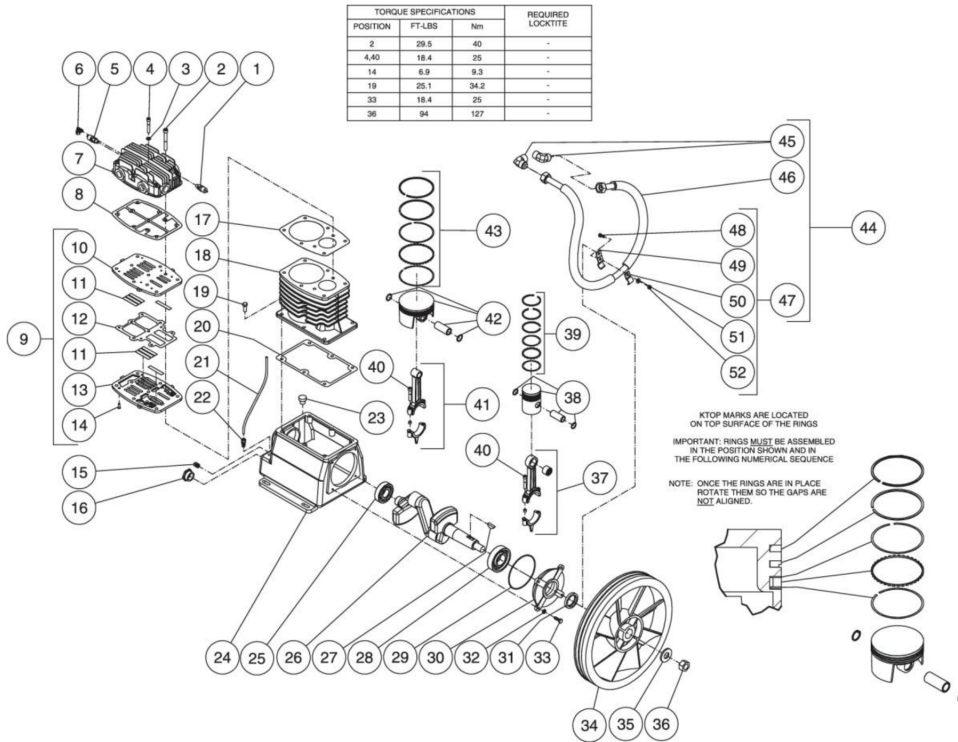
Id	Item #	Description	Quantity	Rev	Comments
13	5-0251A01	BASEPLATE	1		
14	27-9524	BOLT	15		
15	N/A Sep.	DECAL- WARNING: RISK OF BURNS (SEE 34-9016)	2		
16	N/A	DECAL- DATA PLATE	1		
17	27-0133	BOLT	3		
18	28-0023	FLATWASHER	19		
19	20-0650A01	BELT TENSIONER PLATE	1		
20	19-0237	CANISTER FILTER	1		
21	27-0122	BOLT	4		
22	30-0159	LOCKNUT	8		
23	19-0226	FILTER - REPLACEMENT ONLY	1		
24	70-0358	DRAINZIT DRAIN ASSEMBLY	1		
25	1-0086	ENGINE - 13.0 HP HONDA	1		
26	N/A Sep.	DECAL- WARNING: MUFFLER HOT (SEE 34-9016)	1		
27	N/A Sep.	DECAL- CHECK OIL TAPE (SEE 34-9016)	2		
28	N/A Sep.	DECAL- ENGINE FUEL (SEE 34-9016)	1		
29	43-0078	KEY	1		
30	24-0285	ELBOW	1		
31	33-0425	SPACER	4		
32	20-0860A01	SUPPORT BRACKET	1		
33	854-0087	BELTGUARD BACK ASSEMBLY (INC. 34-36)	1		
34	N/A Sep.	BELTGUARD BACK (SEE 851-0363)	1		
35	N/A Sep.	DECAL- WARNING: BELTGUARD IN PLACE (SEE 34-9016)	1		
36	33-0020	EDGING *(THREE FEET REQUIRED)	1		
37	10-0025	SHEAVE	1		
38	11-0069	DRIVE BELT	2		
39	9-0005	BUSHING	1		
40	27-0015	BOLT	2		
41	854-0088	BELTGUARD COVER ASSEMBLY (INC. 42-43)	1		
42	33-0020	EDGING *(SIX FEET REQUIRED)	1		
43	N/A Sep.	BELTGUARD COVER (SEE 851-0364)	1		
44	33-0197	FASTENER	2		
45	N/A Sep.	DECAL- OPERATING INSTRUCTIONS (SEE 34-9016)	1		
46	N/A Sep.	DECAL- MAINTENANCE INSTRUCTIONS (SEE 34-9016)	1		
47	30-0157	LOCKNUT	2		
48	28-0003	WASHER	4		
49	27-0066	BOLT	2		
50	3-0234	PUMP	1		
51	27-0119	BOLT	4		

Id	Item #	Description	Quantity	Rev	Comments
52	33-0413	THROTTLE CONTROL	1		
53	N/A	THROTTLE CLAMP W/THROTTLE CONTROL	1		
54	45-0084	THROTTLE CLIP	1		
55	23-0315	COMPRESSION NUT	1		
56	23-0425	TUBE SUPPORT INSERT	2		
57	15-0238	HOSE *(THREE FEET REQUIRED)	1		
58	27-3064	SELF DRILL SCREW	1		
59	62-0126	THROTTLE CONTROL ADAPTER	1		
60	N/A	THROTTLE CLIP W/ THROTTLE CONTROL	2		
61	23-0316	ELBOW	1		
62	22-0394	PILOT VALVE	1		
63	15-0259	HOSE	1		
64	24-0286	MUFFLER	1		
65	22-0267	PRESSURE RELIEF VALVE	1		
66	23-0017	BUSHING	1		
67	51-0033	MANIFOLD BLOCK	2		
68	23-0105	HOSE BARB	1		
69	42-0011	HOSE CLAMP	2		
70	15-0007	HOSE *(TWO FEET REQUIRED)	1		
71	24-0010	NIPPLE	2		
72	24-0009	PLUG	2		
73	24-0105	ELBOW	1		
74	30-0155	LOCKNUT	4		
75	23-0111	REDUCER	2		
76	22-0271	PRESSURE GAUGE	2		
77	22-0395	ADJUSTABLE REGULATOR	1		
	34-9016	DECAL SET (INC. 3, 9, 15, 26-28, 45-46)			
		*MUST ORDER IN ONE FOOT LENGTHS			



AS2-SH13-30M / AS2-SH13-30M (sn:0-99999999)

## COMPRESSOR PUMP



Id	Item #	Description	Quantity	Rev	Comments
1	22-0361	HIGH PRESSURE SAFETY VALVE	1		
2	27-0880	BOLT	8		
3	N/A	WASHER	2		
4	27-0826	BOLT	2		
5	22-0362	LOW PRESSURE SAFETY VALVE	1		
6	23-0316	ELBOW	1		
7	46-1187	CYLINDER HEAD	1		
8	N/A Sep.	HEAD GASKET (SEE 70-0420 OR 70-0421)	1		
9	46-1190	VALVE PLATE ASSEMBLY	1		
10	N/A	UPPER VALVE PLATE	1		
11	N/A Sep.	VALVE PLATE (SEE 70-0421 OR 70-0431)	8		
12	N/A Sep.	VALVE PLATE GASKET (SEE 70-0420 OR 70-0421)	1		
13	N/A	BOTTOM VALVE PLATE	1		
14	N/A SEP.	SCREW	6		

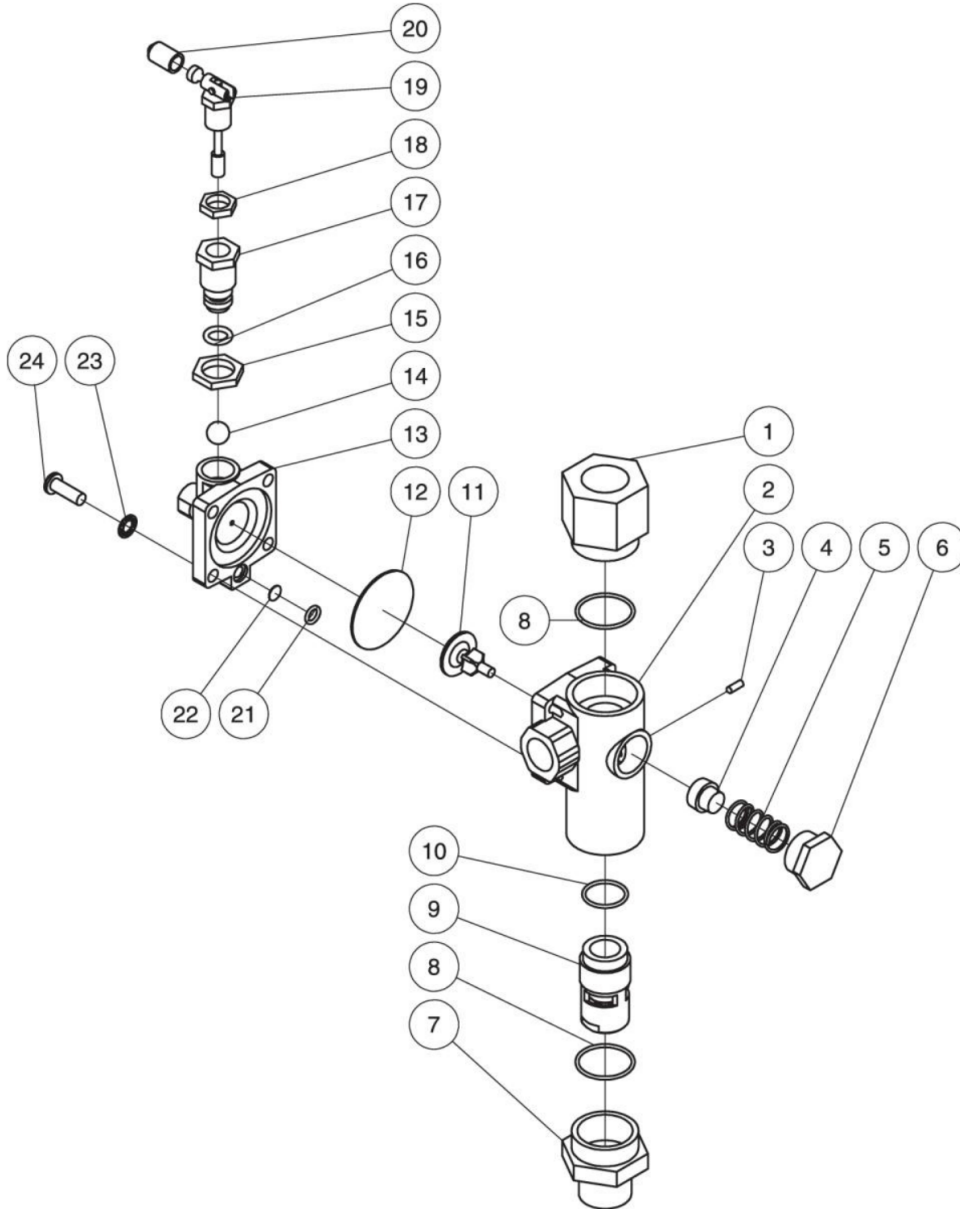
Id	Item #	Description	Quantity	Rev	Comments
15	24-0009	PLUG	1		
16	46-1098	OIL SIGHT GLASS	1		
17	N/A Sep.	CYLINDER GASKET (SEE 70-0420)	1		
18	46-1191	CYLINDER	1		
19	27-0117	BOLT	6		
20	N/A Sep.	CRANKCASE GASKET (SEE 70-0420)	1		
21	54-0034	CRANKCASE BREATHER TUBE	1		
22	23-0328	ADAPTER	1		
23	46-1121	OIL FILL PLUG	1		
24	46-1188	CRANKCASE	1		
25	48-0082	BALL BEARING	1		
26	N/A	CRANKSHAFT	1		
27	43-0117	KEY	1		
28	48-0084	BALL BEARING	1		
29	N/A Sep.	O-RING (SEE 70-0420)	1		
30	46-1189	BEARING FLANGE	1		
31	26-0291	OIL SEAL	1		
32	29-0007	LOCKWASHER	4		
33	27-0067	BOLT	4		
34	10-0132	FLYWHEEL	1		
35	N/A	CRANKSHAFT WASHER	1		
36	N/A	CRANKSHAFT NUT	1		
37	70-0423	HIGH PRESSURE CONNECTING ROD ASSEMBLY	1		
38	46-1192	HIGH PRESSURE PISTON	1		
39	70-0425	HIGH PRESSURE RING SET KIT	1		
40	N/A	BOLT	4		
41	70-0424	LOW PRESSURE CONNECTING ROD ASSEMBLY	1		
42	46-1193	LOW PRESSURE PISTON	1		
43	70-0426	LOW PRESSURE RING SET KIT	1		
44	70-0427	INTERCOOLER KIT (INC. 45, 46, 48-52)	1		
45	N/A Sep.	INTERCOOLER ELBOW (SEE 70-0427)	2		
46	N/A Sep.	INTERCOOLER LINE (SEE 70-0427)	1		
47	70-0428	INTERCOOLER HOLDER KIT (INC. 48-52)	1		
48	27-0015	BOLT	1		
49	N/A Sep.	INTERCOOLER BRACKET (SEE 70-0428)	1		
50	N/A Sep.	INTERCOOLER CLAMP (SEE 70-0428)	1		
51	28-0002	WASHER	1		
52	30-0155	LOCKNUT	1		
KIT	70-0421	GASKET/VALVE PLATE (INC. 8, 11, 12, 14)			

<b>Id</b>	<b>Item #</b>	<b>Description</b>	<b>Quantity</b>	<b>Rev</b>	<b>Comments</b>
KIT	70-0420	GASKET (INC. 8, 12, 17, 20, 29)			
KIT	70-0431	VALVE PLATE (INC. 11, 14)			



AS2-SH13-30M / AS2-SH13-30M (sn:0-99999999)

## PILOT VALVE



Id	Item #	Description	Quantity	Rev	Comments
1	N/A Sep.	INLET PORT FITTING (SEE 22-0394)	1		
2	N/A Sep.	MAIN BODY (SEE 22-0394)	1		
3	N/A Sep.	SET SCREW (SEE 22-0394)	1		
4	N/A Sep.	PISTON (SEE 70-0449)	1		
5	N/A Sep.	UNLOADER VALVE SPRING (SEE 70-0449)	1		

Id	Item #	Description	Quantity	Rev	Comments
6	N/A Sep.	CAP (SEE 22-0394)	1		
7	N/A Sep.	OUTLET PORT (SEE 22-0394)	1		
8	N/A Sep.	O-RING (SEE 70-0449)	2		
9	N/A Sep.	CHECK VALVE (SEE 22-0394)	1		
10	N/A Sep.	O-RING (SEE 70-0449)	1		
11	N/A Sep.	UNLOADER STEM (SEE 70-0449)	1		
12	N/A Sep.	DIAPHRAM (SEE 70-0449)	1		
13	N/A Sep.	PILOT BODY (SEE 22-0394)	1		
14	N/A Sep.	BALL (SEE 70-0449)	1		
15	N/A Sep.	DIFFERENTIAL ADJUSTING LOCKNUT (SEE 22-0394)	1		
16	N/A Sep.	O-RING (SEE 70-0449)	1		
17	N/A Sep.	DIFFERENTIAL ADJUSTING NUT (SEE 22-0394)	1		
18	N/A Sep.	PRESSURE ADJUSTING LOCKNUTV	1		
19	N/A Sep.	PRESSURE ADJUSTING TOGGLE ASSEMBLY (SEE 70-0449)	1		
20	N/A Sep.	TOGGLE COVER (SEE 22-0394)	1		
21	N/A Sep.	O-RING (SEE 70-0449)	1		
22	N/A Sep.	SCREEN (SEE 70-0449)	1		
23	N/A Sep.	WASHER (SEE 22-0394)	4		
24	N/A Sep.	SCREW (SEE 22-0394)	4		
	70-0449	REPAIR KIT (INC. 4, 5, 8, 10-12, 14, 16, 19, 21, 22)			
	22-0394	COMPLETE PILOT VALVE (INC. 1-24)			