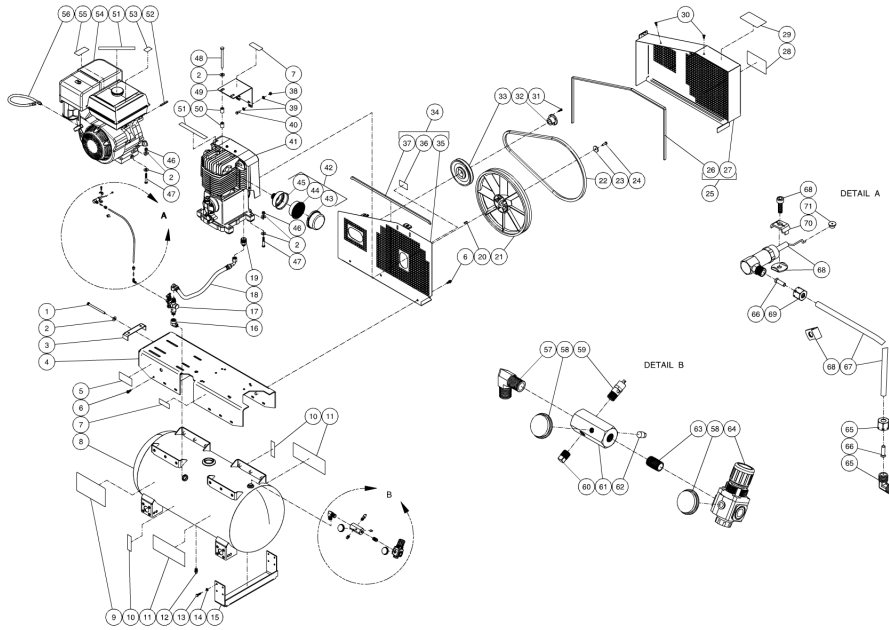




AC2-SH11-30M / AC2-SH11-30M (sn:20035913-99999999)

TANK ASSEMBLY



Id	Item #	Description	Quantity	Rev	Comments
1	27-0133	BOLT	1		
2	28-0023	FLATWASHER	19		
3	20-0650A01	BELT TENSIONER PLATE	1		
4	N/A	DECAL- DATA PLATE	1		
5	5-0197A01	BASEPLATE ASSEMBLY	1		
6	27-9524	BOLT	15		
7	N/A Sep.	DECAL- WARNING: RISK OF BURNS (SEE 34-9016)	1		
8	N/A	AIR TANK ASSEMBLY	1		
9	N/A Sep.	DECAL- DANGER/WARNING/CAUTION (SEE 34-9016)	1		
10	N/A Sep.	DECAL- TANK DRAIN (SEE 34-9016)	2		
11	34-0828	DECAL- MI-T-M AIR COMPRESSORS	2		
12	23-0312	PETCOCKS	1		
13	27-0067	BOLT	16		
14	29-0007	LOCKWASHER	16		

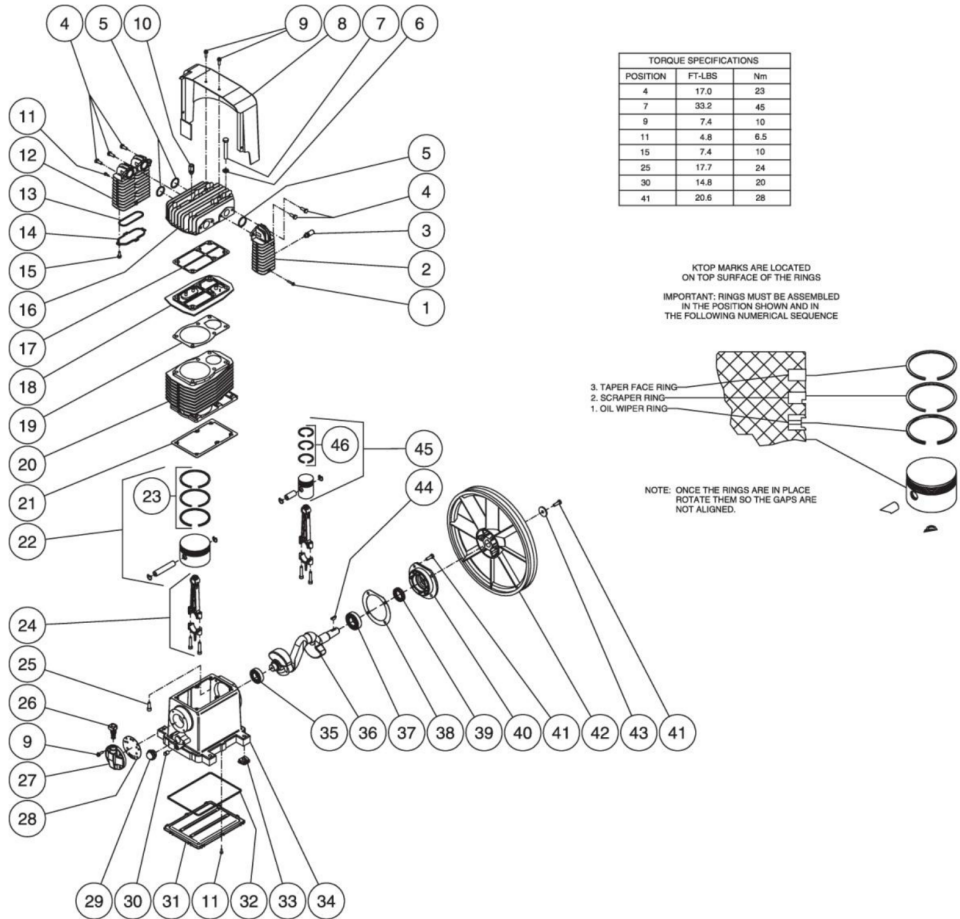
Id	Item #	Description	Quantity	Rev	Comments
15	20-0671A01	SUPPORT FOOT BRACKET	2		
16	24-0041	ELBOW	1		
17	22-0270	PILOT VALVE	1		
18	15-0188	HOSE	1		
19	24-0160	ADAPTER	1		
20	43-0102	KEY W/PUMP	1		
21	10-0130	FLYWHEEL W/PUMP	1		
22	11-0066	DRIVE BELT	1		
23	28-1032	WASHER	1		
24	27-8033	BOLT	1		
25	854-0067	BELTGUARD ASSEMBLY (INC. 26-27)	1		
26	33-0020	EDGING *(FIVE FEET REQUIRED)	1		
27	N/A Sep.	BELTGUARD FRONT (INC. 854-0067)	1		
28	N/A Sep.	DECAL- MAINTENANCE INSTRUCTIONS (SEE 34-9016)	1		
29	N/A Sep.	DECAL- OPERATING INSTRUCTIONS (SEE 34-9016)	1		
30	33-0197	FASTENER	2		
31	27-0015	BOLT WWASHER	2		
32	9-0005	BUSHING	1		
33	10-0128	SHEAVE	1		
34	854-0066	BELTGUARD BACK ASSEMBLY (INC. 35-37)	1		
35	N/A Sep.	BELTGUARD BACK (SEE 854-0066)	1		
36	N/A Sep.	DECAL- WARNING: BELTGUARD IN PLACE (SEE 34-9016)	1		
37	33-0020	EDGING *(THREE FEET REQUIRED)	1		
38	30-0157	LOCKNUT	2		
39	28-0003	WASHER	4		
40	27-0066	BOLT	2		
41	3-0222	PUMP	1		
42	19-0219	AIR FILTER ASSEMBLY (INC. 43-45)	1		
43	N/A Sep.	FRONT AIR FILTER HOUSING (SEE 19-0219)	1		
44	19-0220	AIR FILTER ELEMENT	1		
45	N/A Sep.	REAR AIR FILTER HOUSING (SEE 19-0219)	1		
46	30-0159	LOCKNUT	8		
47	27-0122	BOLT	8		
48	27-8074	BOLT	2		
49	20-0816AA01	SUPPORT BRACKET	1		
50	33-0425	SPACER	4		
51	N/A Sep.	DECAL- CHECK OIL (SEE 34-9016)	2		
52	43-0078	KEY	1		
53	N/A Sep.	DECAL- ENGINE FUEL (SEE 34-9016)	1		

Id	Item #	Description	Quantity	Rev	Comments
54	1-0086	ENGINE- 11 HP HONDA	1		
55	N/A Sep.	DECAL- MUFFLER HOT (SEE 34-9016)	1		
56	70-0358	DRAINZIT DRAIN ASSEMBLY	1		
57	24-0267	ELBOW	1		
58	22-0271	PRESSURE GAUGE	2		
59	22-0267	PRESSURE RELIEF VALVE	1		
60	24-0009	PLUG	1		
61	24-0266	MANIFOLD	1		
62	24-0082	PLUG	1		
63	24-0175	NIPPLE	1		
64	22-0231	ADJUSTABLE REGULATOR	1		
65	23-0316	ELBOW	1		
66	23-0425	TUBE SUPPORT INSERT	2		
67	15-0238	TUBE *(TWO FEET REQUIRED)	1		
68	33-0413	THROTTLE CONTROL	1		
69	23-0315	COMPRESSION NUT	1		
70	45-0084	ENGINE THROTTLE CLIP W/ ENGINE	1		
71	62-0126	ADAPTER W/ THROTTLE CONTROL	1		
	34-9016	SAFETY DECAL KIT (INC. 7, 9-10, 28-29, 36, 51, 53, 55)			
		*MUST ORDER IN ONE FOOT LENGTHS			



· AC2-SH11-30M / AC2-SH11-30M (sn:20035913-99999999)

TWO STAGE COMPRESSOR



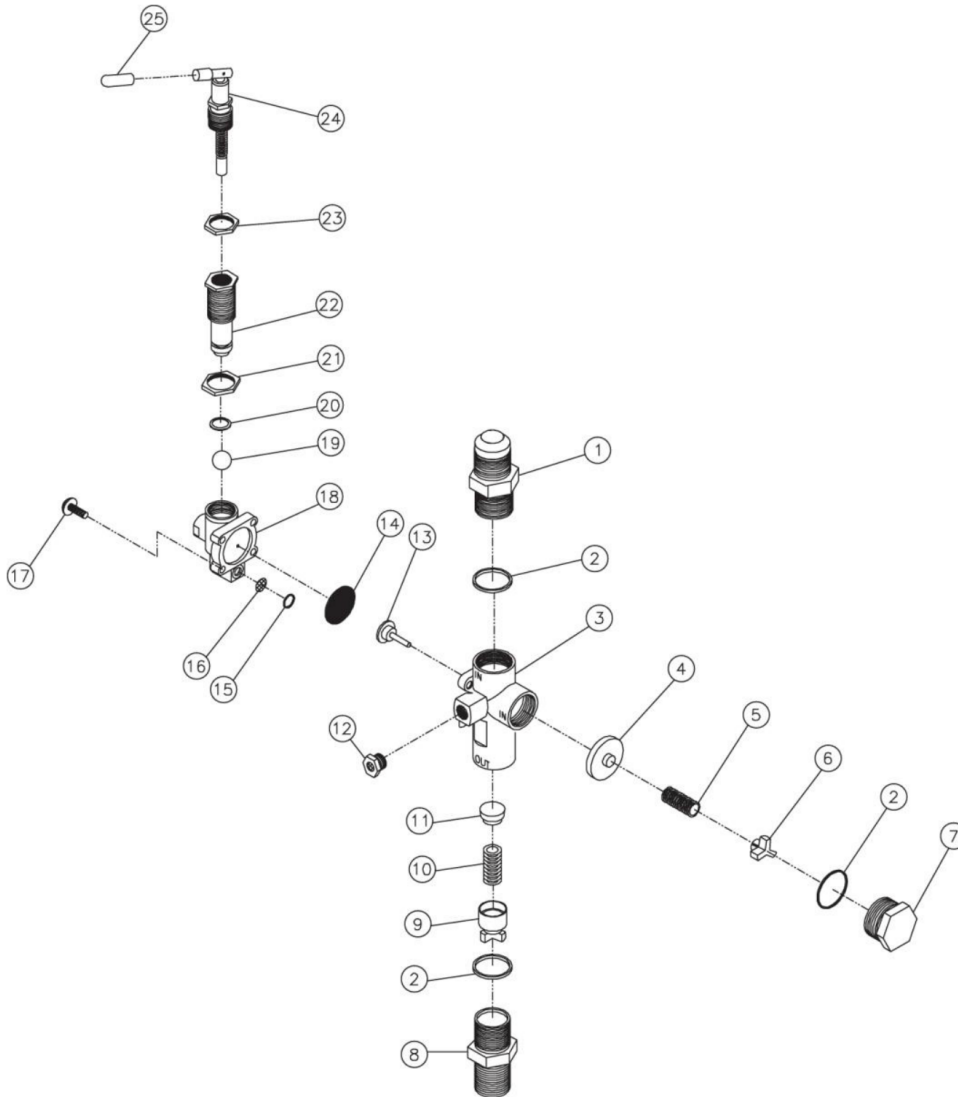
Id	Item #	Description	Quantity	Rev	Comments
1	27-8807	BOLT	1		
2	46-1156	AFTER COOLER	1		
3	22-0385	SAFETY VALVE	1		
4	27-8032	BOLT	5		
5	25-0439	O-RING	3		
6	28-1021	WASHER	6		
7	27-8934	BOLT	6		
8	N/A	AIR SHROUD	1		
9	27-8002	BOLT	6		
10	22-0386	SAFETY VALVE	1		

Id	Item #	Description	Quantity	Rev	Comments
11	27-9575	BOLT	11		
12	46-1157	INTER COOLER	1		
13	25-0440	O-RING	1		
14	46-0816	INTERCOOLER COVER	1		
15	27-8906	BOLT	4		
16	46-1158	PUMP HEAD	1		
17	N/A Sep.	HEAD GASKET (SEE 70-0345)	1		
18	22-0283	VALVE PLATE ASSEMBLY	1		
19	N/A Sep.	CYLINDER GASKET (SEE 70-0345)	1		
20	46-1176	CYLINDER	1		
21	N/A Sep.	CRANKCASE GASKET (SEE 70-0345)	1		
22	N/A	COMPLETE PISTON	1		
23	70-0344	RING SET KIT	1		
24	N/A	CONNECTING ROD	2		
25	27-8194	BOLT	6		
26	46-0818	CRANKCASE FILL HOLE PLUG W/O-RING	1		
27	46-0819	OIL FILL END CAP	1		
28	N/A Sep.	OIL FILL END CAP GASKET (SEE 70-0345)	1		
29	46-0820	OIL LEVEL SIGHT GLASS W/GASKET	1		
30	39-0106	OIL DRAIN PLUG	1		
31	N/A	OIL PAN	1		
32	N/A Sep.	OIL PAN O-RING (SEE 70-0345)	1		
33	46-0821	ISOLATOR	4		
34	N/A	CRANKCASE	1		
35	48-0060	BALL BEARING	1		
36	N/A	PISTON CRANKSHAFT	1		
37	48-0024	BALL BEARING	1		
38	N/A Sep.	FRONT END CAP GASKET (SEE 70-0345)	1		
39	26-0208	CRANKSAFT SEAL	1		
40	46-0822	FRONT END CAP	1		
41	27-8033	BOLT	5		
42	10-0130	FLYWHEEL	1		
43	28-1032	WASHER	1		
44	43-0102	KEY	1		
45	N/A	COMPLETE PISTON	1		
46	70-0239	RING SET KIT	1		
KIT	70-0345	GASKET KIT (INC. 5, 13, 17, 19, 21, 28, 32, 38)	1		



AC2-SH11-30M / AC2-SH11-30M (sn:20035913-99999999)

PILOT VALVE



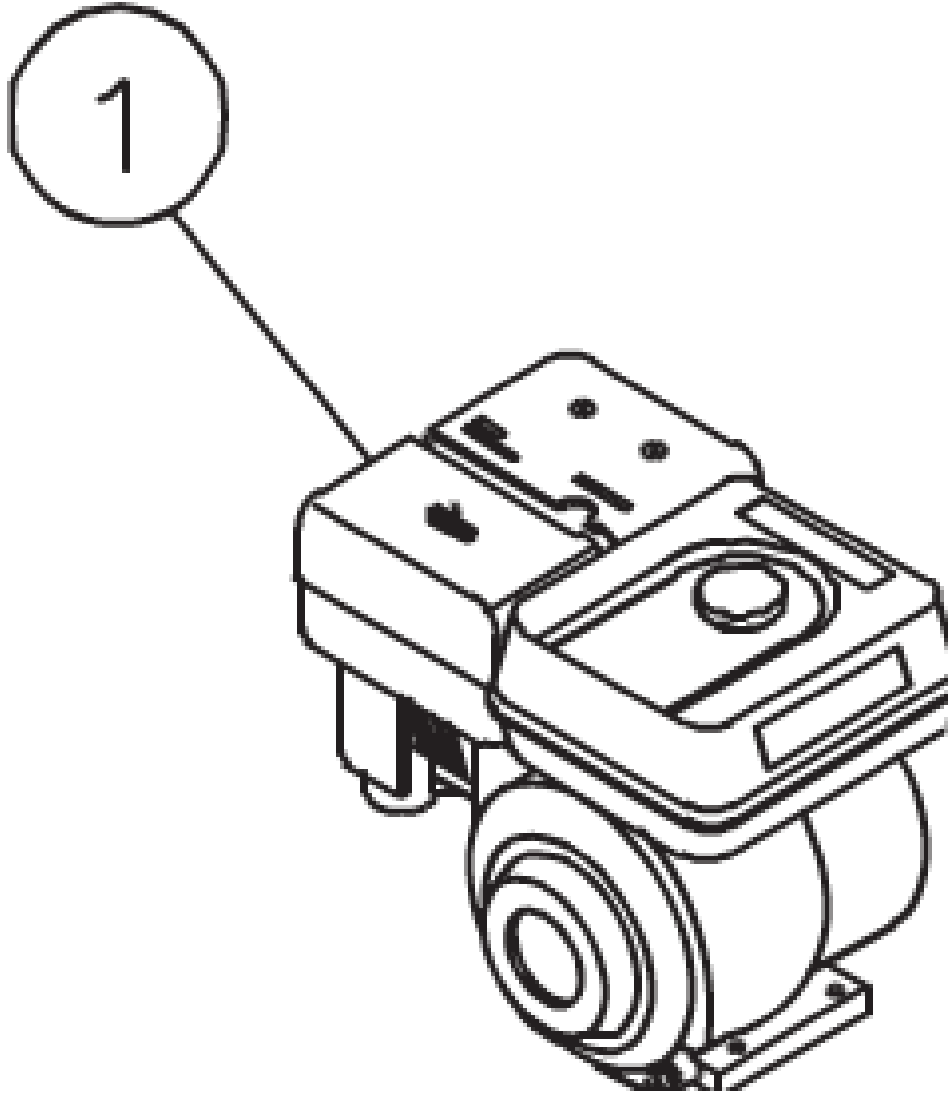
Id	Item #	Description	Quantity	Rev	Comments
1	N/A	INLET PORT FITTING	1		
2	N/A Sep.	O-RING (SEE 70-0241)	3		
3	N/A	MAIN BODY	1		
4	N/A Sep.	PISTON ASSEMBLY-UNLOADER VALVE (SEE 70-0241)	1		
5	N/A Sep.	SPRING-UNLOADER VALVE (SEE 70-0241)	1		
6	N/A	SPRING SEAT-UNLOADER VALVE	1		
7	N/A	CAP	1		

Id	Item #	Description	Quantity	Rev	Comments
8	N/A	DISCHARGE PORT FITTING	1		
9	N/A	SPRING SEAT ASSEMBLY-CHECK VALVE	1		
10	N/A Sep.	SPRING-CHECK VALVE (SEE 70-0241)	1		
11	N/A Sep.	PISTON-CHECK VALVE (SEE 70-0241)	1		
12	23-0419	MUFFLER	1		
13	N/A Sep.	STEM UNLOADER (SEE 70-0241)	1		
14	N/A Sep.	DIAPHRAM (SEE 70-0241)	1		
15	N/A Sep.	O-RING (SEE 70-0241)	1		
16	N/A Sep.	SCREEN (SEE 70-0241)	1		
17	N/A	SCREW W/WASHER	4		
18	N/A	PILOT BODY	1		
19	N/A Sep.	BALL (SEE 70-0241)	1		
20	N/A Sep.	O-RING (SEE 70-0241)	1		
21	N/A	DIFFERENTIAL ADJUSTING LOCKNUT	1		
22	N/A	DIFFERENTIAL ADJUSTING NUT	1		
23	N/A	PRESSURE ADJUSTING LOCKNUT	1		
24	N/A Sep.	PRESSURE ADJUSTING TOGGLE ASSEMBLY (SEE 70-0241)	1		
25	N/A	RED TOGGLE COVER	1		
KIT	70-0241	REPAIR KIT (INC. 2 EACH 3, 4-5, 10-11, 13-16, 19-20, 24			



AC2-SH11-30M / AC2-SH11-30M (sn:20035913-99999999)

AX OPTION BATTERY

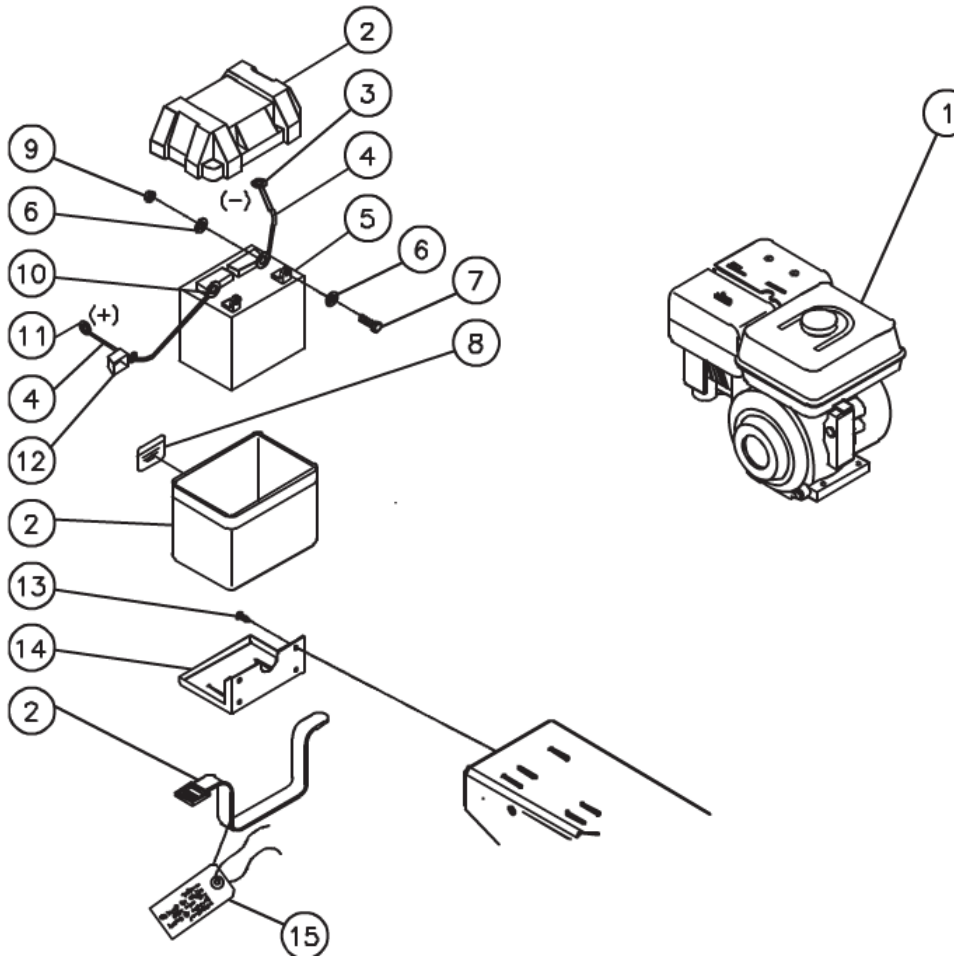


Id	Item #	Description	Quantity	Rev	Comments
1	1-0039	ENGINE- HONDA 11HP	1		



AC2-SH11-30M / AC2-SH11-30M (sn:20035913-99999999)

AX OPTION BATTERY



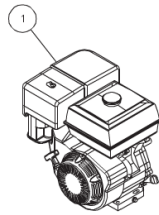
Id	Item #	Description	Quantity	Rev	Comments
1	1-0048	ENGINE- HONDA 11HP ELECTRIC START	1		
2	33-0092	BATTERY BOX	1		
3	32-0744	TERMINAL	1		
4	32-0065	BATTERY CABLE *(THREE FEET REQUIRED)	1		
5	32-0058	BATTERY	1		
6	28-0003	WASHER	4		
7	27-0066	BOLT	2		
8	34-0589	DECAL- BATTERY	1		
9	30-0157	LOCKNUT	2		
10	32-0097	TERMINAL	2		

Id	Item #	Description	Quantity	Rev	Comments
11	32-0098	TERMINAL	1		
12	33-0004	BATTERY CABLE COVER	1		
13	27-9524	BOLT	4		
14	20-0625A01	BATTERY BOX BRACKET	1		
15	34-0096	TAG- BATTERY	1		
		*MUST ORDER IN ONE FOOT LENGTHS			



AC2-SH11-30M / AC2-SH11-30M (sn:20035913-99999999)

AX OPTION ELECTRIC START

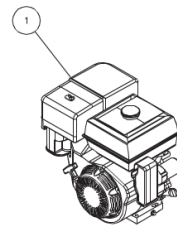


Id	Item #	Description	Quantity	Rev	Comments
1	1-0039	ENGINE- HONDA 11HP	1		



AC2-SH11-30M / AC2-SH11-30M (sn:20035913-99999999)

AX OPTION ELECTRIC START



Id	Item #	Description	Quantity	Rev	Comments
1	1-0048	ENGINE- HONDA 11HP ELECTRIC START	1		