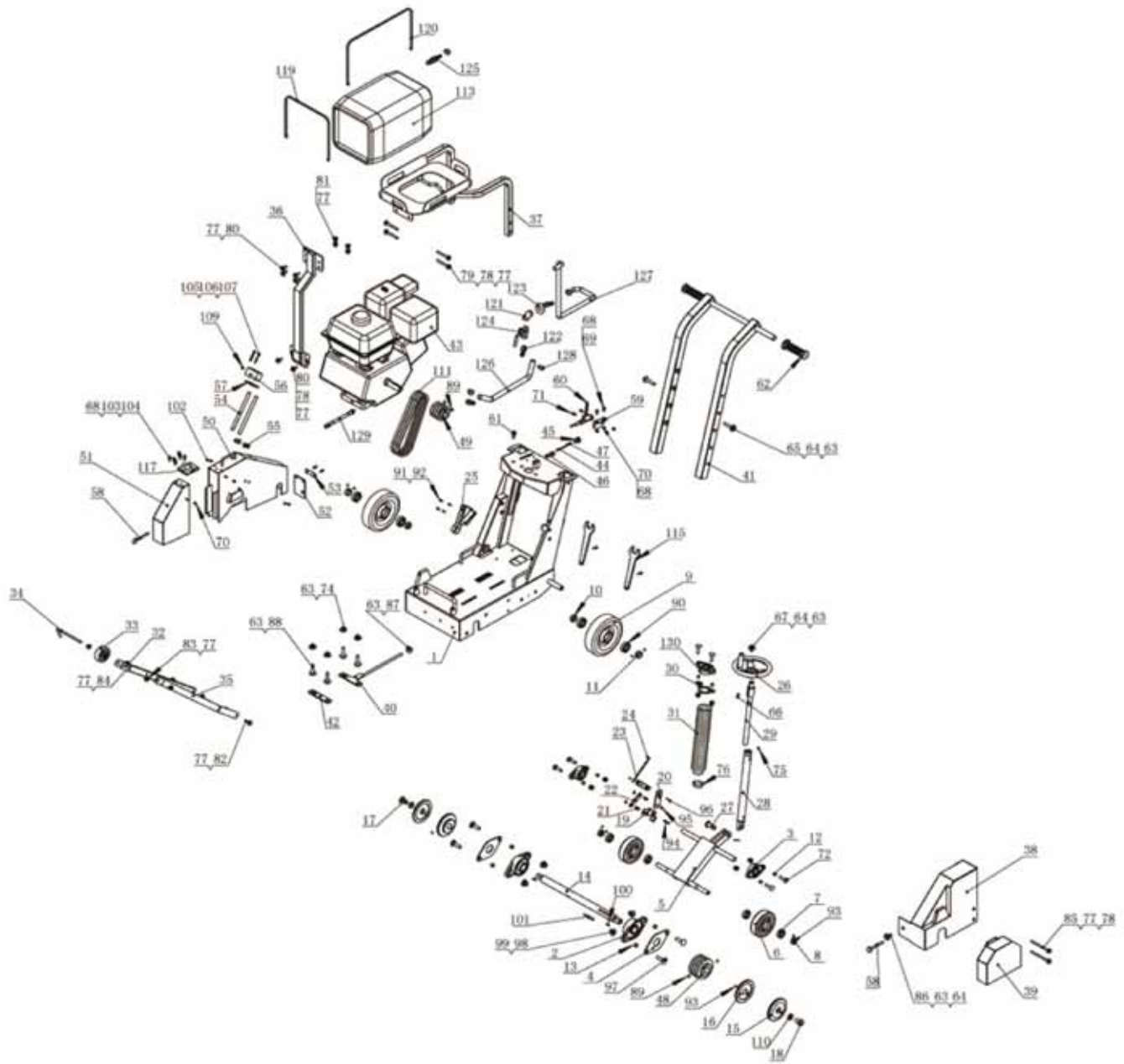


STREET SAW INSTRUCTION MANUAL



STREET SAW INSTRUCTION MANUAL

Ref. No.	Parts No.	Description	Qty
1	CC12-002	basemnet	1
2	GB/T7180-1995	bearing SKFFL207	2
3	GB/T7810-1995	bearing UFCL204	3
4	CC12-038	washer of bearing	2
5	CC12-015	wheel welding assy.	1
6	CC12-031	smallwheel	2
7	GB/T276-1994	bearing 6303-2RS	4
8	CC12-027	small retainer	2
9	CC12-030	bog wheel	2
10	CC12-025	bushing of wheel shaft	2
11	CC12-024	big retainer	2
12	CC12-026	bearing bushing	6
13	CC12-039	bearing bushing	4
14	CC12-032	blade shaft	1
15	CC12-034	press plate cover of blade	2
16	CC12-035	press plate of blade	2
17	CC12-037	hex bolt 5/8-11 left	1
18	CC12-036	hex bolt 5/8-11 right	1
19	CC12-017	hinge	1
20	CC12-020	connector B	1
21	CC12-019	pin of connector	2
22	CC12-018	connector A	1
23	CC12-021	shaft of connector	1
24	CC12-022	indicator	1
25	CC12-023	indicator plate	1
26	CC12-006	adjust wheel	1
27	CC12-016	pin shaft	1
28	CC12-014	adjust screw guide	1
29	CC12-007	adjust screw pipe	1
30	CC12-012	holder	1
31	CC12-013	protector	1
32	CC12-051	frame of position wheel	1
33	CC12-054	position wheel	1
34	CC12-053	position level	1
35	CC12-052	support plate	1
36	CC12-004	water tank support	1
37	CC12-003	bracket pf water tank	1
38	CC12-041	belt cover	1
39	CC12-040	blade cover	1
40	CC12-029	engine adjust level	1
41	CC12-001	handle assy.	1
42	CC12-028	engine mounting bar	1
43		engine	1
44	CC12-010	position pin	1
45	CC12-008	cap	1

STREET SAW INSTRUCTION MANUAL

Ref. No.	Parts No.	Description	Qty
46	CC12-009	slider	1
47	CC12-011	spring	1
48	CC12-033	pulley	1
	CC12-033A	pulley (PJ type)	1
49	CC12-005	engine pulley	1
	CC12-005A	engine pulley (PJ type)	1
50	CC12-043	rear blade cover	1
51	CC12-042	front blade cover	1
52	CC12-050	rubber protect	1
53	CC12-049	press plate	1
54	CC12-047	water pipe	2
55	CC12-048	clamp of water pipe	2
56	CC12-045	water valve	1
57	CC12-046	washer	1
58	CC12-055	pin	2
59	CC12-056	throttle base	1
60	YL-650	throttle assy.	1
61	TAWAN-3A	switch	1
62	436F	handle cover	2
63	GB/T96-1985	plate washer	13
64	GB/T93-1987	M10 spring washer	5
65	GB/T5781-2000	M10-60 hex bolt	2
66	GB1096-79	5x25 keyway	1
67	GB/T5781-2000	M10X20 hex bolt	1
68	GB/T95-1985	M6 plate washer	14
69	GB/T5871-2000	M6X16 hex bolt	2
70	GB/T889.1-2000	M6 self lock nut	6
71	GB/T70.3-2000	M6X16 inner hex sunk bolt	2
72	GB/T41-1998	M10X40 bolt	6
73	GB/T95-1985	M10 plate washer	6
74	GB/T889.1-2000	M10 nut	6
75	JB/T7940.1-1995	M6 oil cup	1
76	Q676	lock	1
77	GB/T95-1995	plate washer	24
78	GB/T93-1987	M8 spring washer	12
79	GB/T5781-2000	M8X75 hex bolt	4
80	GB/T5781-2000	M8X25 hex bolt	6
81	GB/T5781-2000	M8 nut	4
82	GB/T41-2000	M8X30 hex bolt	1
83	GB/T889.1-2000	M8 nut	5
84	GB/T5781-2000	M8X35 hex bolt	2
85	GB/T5781-2000	M8115 hex bol	2
86	GB/T5781-2000	M10X25 hex bolt	1
87	GB/T41-2000	M10 nut	1
88	GB/T5781-2000	M10X50 hex bolt	4

STREET SAW INSTRUCTION MANUAL

Ref. No.	Parts No.	Description	Qty
89	GB/T77-2000	M18X10 screw	4
90	GB/T276-1994	bearing 6204-2RS	4
91	GB/T95-1985	M4 plate washer	4
92	GB/T70.1-2000	M4X12 screw	4
93	GB/T77-2000	M6X10 screw	11
94	GB1096-79	5X35 keyway	1
95	GB/T894.1-1986	M10 shaft lock	4
96	GB/T91-2000	pin 2.2X32	2
97	GB/T41-1998	M12X45 bolt	4
98	GB/T95-1985	plate washer	4
99	GB/T889.1-2000	M12 nut	4
100	GB/T1096-79	5x18 keyway	2
101	GB/T1096-79	8X60 keyway	1
102	GB/T70.3-2000	M5X12 inner hex sunk bolt	4
103	GB/T93-1987	M6 spring washer	10
104	GB/T5781-2000	M6X20 hex bolt	10
105	GB/T95-1985	M5 plate washer	5
106	GB/T93-1987	M5 spring washer	5
107	GB/T5781-2000	M5X45 hex bolt	3
108	GB/T5781-2000	M5X16 hex bolt	2
109	JB4446	tap plug	1
110	GB/T95-1985	plate washer	2
111	280J-20	V belt (Gates PJ type)	1
113	CC12-058	water tank	1
115	CC12-061	wrench	2
117	CC12-044	hinge	1
119	CC12-FB002	water tank short tie	1
120	CC12-FB003	water tank long tie	1
121	GB/T1109-1991	adaptor	1
122	GB/T3287-2000	water pipe connector	3
123	GB/T95-1985	plate washer	1
124	Q11F-16	va;ve	1
125	J0K-15-L1	quick clamp	1 set
126	GB7548-87	exhaust pipe	1
127	GB7548-87	inlet pipe	1
128	Q676	clamp	4
129	CC12-FB004	oil exhaust assy.	1 set
130	T7810-SKF	bearing SKFFL204	1
131	CC12-FB005	rope	1