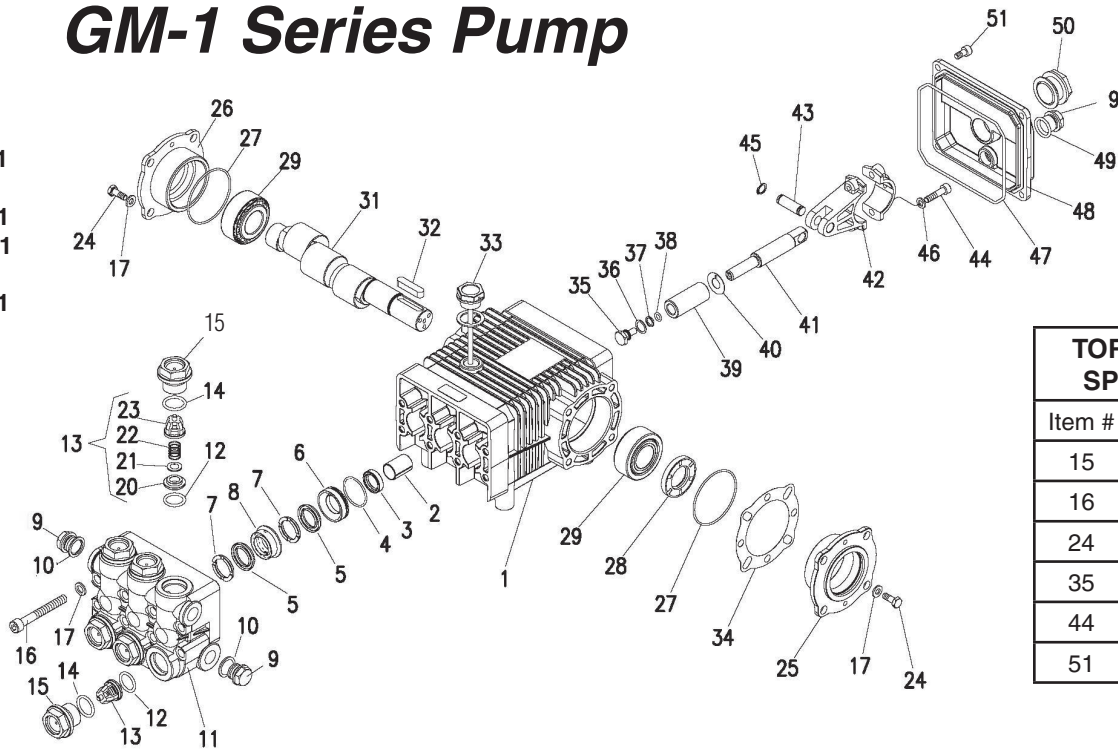




GM-1 Series Pump

- 5-1912 GM3540-1
- 5-1910 GM4030-1
- 5-1911 GM4030L-1
- 5-1920 GM4035-1
- 5-1921 GM4035L-1
- 5-1922 GM4035H-1
- 5-1915 GM5030-1
- 5-1914 GM5030L-1



TORQUE SPECS	
Item #	Ft.-lbs
15	75
16	30
24	8
35	4.5
44	13
51	7.6

PARTS LIST

ITEM	PART NO.	DESCRIPTION	QTY	ITEM	PART NO.	DESCRIPTION	QTY	ITEM	PART NO.	DESCRIPTION	QTY
1	70-020231	Crankcase	1	9	70-160120	Brass Plug 1/2"	1	35*	70-180001	Plunger Bolt	3
2	70-060201	Plunger Guide	3	10	70-060307	Copper Washer 1/2"	1	36*	70-140012	Copper Spacer	3
3*	See Kits Below	Plunger Oil Seal	3	11	70-160216	Manifold Head	1	37*	70-060103	O-Ring Ø1.78 x 7.66	3
4*	70-060107	O-Ring Ø1.78 x 31.47	3	12*	70-060119	O-Ring Ø2.62 x 17.13	6	38*	70-000904	Teflon Ring	3
5*	See Kits Below "V" Seal (4035)		6	13*	See Kits Below	Valve Assembly	6	39*	See Kits Below	Plunger (4035, 4035H)	3
	See Kits Below "V" Seal (4030, 5030)		6	14*	70-060165	O-Ring Ø2.62 x 20.29	6		See Kits Below	Plunger (4030, 5030)	3
	See Kits Below "V" Seal (3540)		6	15	70-160130	Valve Plug	6		See Kits Below	Plunger (3540)	3
6*	70-120106	Pressure Ring 18mm (4035)	3	16	70-180103	Manifold Stud Bolt	8	40*	70-140015	Copper Spacer	3
	70-120105	Pressure Ring 20mm (4030, 5030)	3	17	70-140001	Washer	16	41	70-000301	Plunger Rod	3
	70-120120	Pres Ring 15mm (3540)	3	18	70-060306	Copper Washer 3/8	1	42	70-010001	Connecting Rod	3
7*	70-030007	Support Ring 18mm (4035)	6	19	70-160117	Brass Plug 3/8	1	43	70-150201	Connecting Rod Pin	3
	70-030009	Support Ring 20mm (4030, 5030)	6	24	70-180203	Hexagonal Screw	8	44	70-180105	Connecting Rod Screw	6
	70-030027	Support Ring 15mm (3540)	6	25	70-050060	Bearing Housing	1	45	70-150001	Snap Ring	6
8*	70-030011	Intermed. Ring 18mm (4035)	3	26	70-050061	Closed Bearing Housing	1	46	70-140102	Spring Washer	6
	70-030010	Intermed. Ring 20mm (4030, 5030)	3	27	70-060163	O-Ring Ø1.78 x 60.05	2	47	70-060009	O-Ring, Ø2.62 x 126.67	1
	70-030020	Intermediate Ring 15mm (3540)	3	28	70-000102	Crankshaft Seal	1	48	70-020350	Crankcase Cover	1
				29	70-020003	Tapered Roller Bearing	2	49	70-060302	O-Ring, Ø1.78 x 14	1
				31	70-000485	Crankshaft (5030,3540)	1	50	70-070005	Sight Glass 3/4	1
					70-000486	Crankshaft (4030,4035/H)	1	51	70-180112	Cover Screw	5
				32	70-020604	Crankshaft Key	1	52	70-000929	▲ Bach Ring 1/2" (4035H)	3
				33	70-160006	Oil Dip Stick	1				
				34	70-030102	Shim	2				

* Available in kit (See below) ▲ Not Shown

REPAIR KITS

REPAIR KIT NUMBER	70-261216	70-260821	70-260824	70-261210	70-260810	70-260825	70-261217	70-260822	70-260823	70-260007	70-260027
KIT DESCRIPTION	*Plunger Seal GM-4035	Plunger Seal GM-4030 GM-5030	Plunger Seal GM-3540	**Complete Seal Packing GM-4035	Complete Seal Packing GM-4030 GM-5030	Complete Seal Packing GM-3540	Plunger GM-4035 GM-4035H	Plunger GM-4030 GM-5030	Plunger GM-3540	Complete Valve	Plunger Oil Seals
ITEM NUMBERS INCLUDED	4, 5, 7	4, 5, 7	4, 5, 7	3, 4, 5, 6, 7, 8	3, 4, 5, 6, 7, 8	3, 4, 5, 6, 7, 8	34, 35, 36, 37, 38, 39	34, 35, 36, 37, 38, 39	34, 35, 36, 37, 38, 39	12, 13, 14	3
NO. OF CYLINDERS KIT WILL SERVICE	3	3	3	1	1	1	1	1	1	6	3

* For GM 4035H High Heat Packings, Use 70-261212

**For GM 4035H High Heat Packings, Use 70-261213