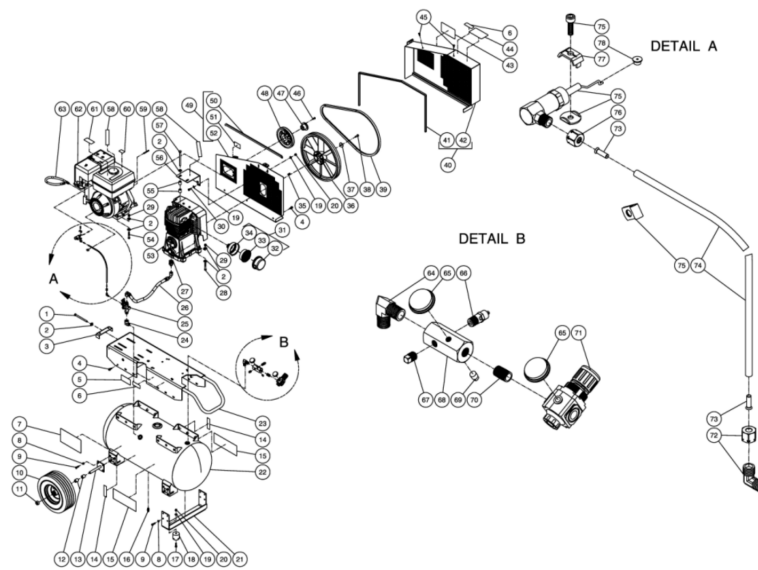




AC2-PH08-30M / AC2-PH08-30M (sn:20024615-99999999)

TANK ASSEMBLY



Id	Item #	Description	Quantity	Rev	Comments
1	27-0133	BOLT	1		
2	28-0023	FLATWASHER	19		
3	20-0650A01	BELT TENSIONER PLATE	1		
4	27-9524	BOLT	15		
5	N/A	DECAL- DATA PLATE	1		
6	N/A Sep.	DECAL- WARNING: RISK OF BURNS (SEE 34-9016)	1		
7	N/A Sep.	DECAL- DANGER/WARNING/CAUTION (SEE 34-9016)	1		
8	29-0007	LOCKWASHER	16		
9	27-0067	BOLT	16		
10	14-0006	WHEEL	2		
11	33-0351	COLLAR / SHAFT	2		
12	20-0313A01	AXLE SPACER	4		
13	20-0670A01	AXLE STUB BRACKET	2		
14	N/A Sep.	DECAL- TANK DRAIN (SEE 34-9016)	2		

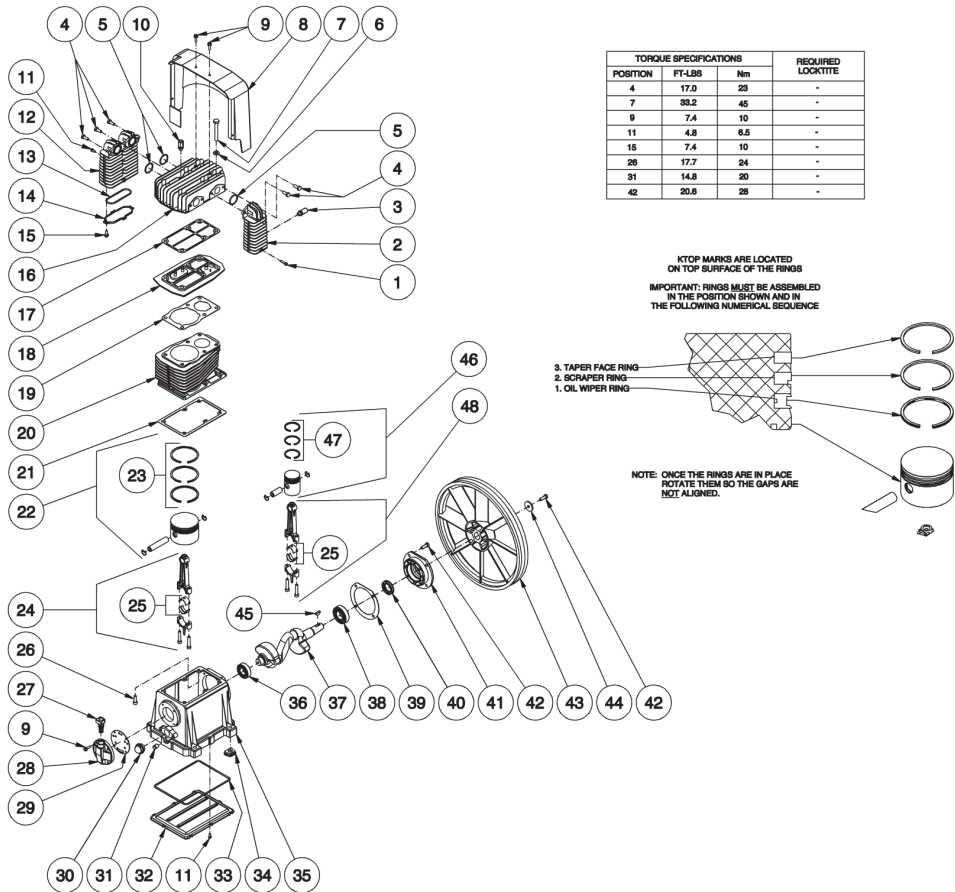
Id	Item #	Description	Quantity	Rev	Comments
15	34-0828	DECAL- MI-T-M AIR COMPRESSORS	2		
16	23-0312	PETCOCKS	1		
17	27-0068	BOLT	2		
18	14-0008	ISOLATOR	2		
19	28-0003	WASHER	6		
20	30-0157	LOCKNUT	4		
21	20-0671A01	SUPPORT FOOT BRACKET	2		
22	N/A	AIR TANK ASSEMBLY	1		
23	5-0198A01	BASEPLATE	1		
24	24-0041	ELBOW	1		
25	22-0270	PILOT VALVE	1		
26	15-0188	HOSE	1		
27	24-0160	ADAPTER	1		
28	27-0122	BOLT	4		
29	30-0159	LOCKNUT	8		
30	27-0066	BOLT	2		
31	19-0219	AIR FILTER ASSEMBLY (INC. 32-34)	1		
32	N/A Sep.	FRONT AIR FILTER HOUSING (SEE 19-0219)	1		
33	19-0220	AIR FILTER ELEMENT	1		
34	N/A Sep.	REAR AIR FILTER HOUSING (SEE 19-0219)	1		
35	43-0102	KEY W/COMPRESSOR	1		
36	10-0095	FLYWHEEL W/COMPRESSOR	1		
37	28-1032	FLATWASHER FLYWHEEL W/COMPRESSOR	1		
38	27-8433	BOLT W/COMPRESSOR	1		
39	11-0066	DRIVE BELT	1		
40	854-0067	BELTGUARD ASSEMBLY (INC. 41-42)	1		
41	33-0020	EDGING *(FIVE FEET REQUIRED)	1		
42	N/A Sep.	BELTGUARD FRONT (INC. 854-0067)	1		
43	N/A Sep.	DECAL- MAINTENANCE INSTRUCTIONS (SEE 34-9016)	1		
44	N/A Sep.	DECAL- OPERATING INSTRUCTIONS (SEE 34-9016)	1		
45	33-0197	FASTENER	2		
46	27-0015	BOLT WWASHER	2		
47	9-0005	BUSHING	1		
48	10-0014	SHEAVE	1		
49	854-0066	BELTGUARD BACK ASSEMBLY (INC. 50-52)	1		
50	33-0020	EDGING *(THREE FEET REQUIRED)	1		
51	N/A Sep.	DECAL- WARNING: BELTGUARD IN PLACE (SEE 34-9016)	1		
52	N/A Sep.	BELTGUARD BACK (SEE 854-0066)	1		
53	3-0174	PUMP	1		

Id	Item #	Description	Quantity	Rev	Comments
54	27-0121	BOLT	4		
55	33-0425	SPACER	4		
56	20-0818AA01	SUPPORT BRACKET	1		
57	27-8074	BOLT	2		
58	N/A Sep.	DECAL- CHECK OIL (SEE 34-9016)	2		
59	43-0078	KEY	1		
60	N/A Sep.	DECAL- ENGINE FUEL (SEE 34-9016)	1		
61	N/A Sep.	DECAL- MUFFLER HOT (SEE 34-9016)	1		
62	1-0037	ENGINE- 8 HP HONDA	1		
63	70-0358	DRAINZIT DRAIN ASSEMBLY	1		
64	24-0267	ELBOW	1		
65	22-0271	PRESSURE GAUGE	2		
66	22-0267	PRESSURE RELIEF VALVE	1		
67	24-0009	PLUG	1		
68	24-0266	MANIFOLD	1		
69	24-0082	PLUG	1		
70	24-0175	NIPPLE	1		
71	22-0231	ADJUSTABLE REGULATOR	1		
72	23-0316	ELBOW	1		
73	23-0425	TUBE SUPPORT INSERT	2		
74	15-0238	TUBE *(ONE FOOT REQUIRED)	1		
75	33-0413	THROTTLE CONTROL	1		
76	23-0315	COMPRESSION NUT	1		
77	45-0084	ENGINE THROTTLE CLIP W/ ENGINE	1		
78	62-0126	ADAPTER W/ THROTTLE CONTROL	1		
	34-9016	SAFETY DECAL KIT (INC. 6-7, 14, 43-44, 51, 58, 60-61)			
		*MUST ORDER IN ONE FOOT LENGTHS			



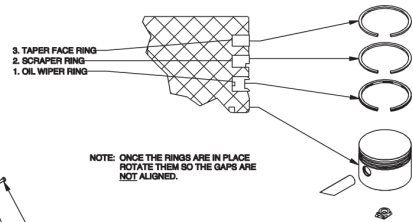
AC2-PH08-30M / AC2-PH08-30M (sn:20024615-99999999)

PUMP



TORQUE SPECIFICATIONS			REQUIRED LOCKTITE
POSITION	FT-LBS	Nm	
4	17.0	23	-
7	33.2	45	-
9	7.4	10	-
11	4.8	6.5	-
15	7.4	10	-
28	17.7	24	-
31	14.8	20	-
42	20.6	28	-

KTOP MARKS ARE LOCATED ON TOP SURFACE OF THE RINGS
 IMPORTANT: RINGS MUST BE ASSEMBLED IN THE POSITION SHOWN AND IN THE FOLLOWING NUMERICAL SEQUENCE



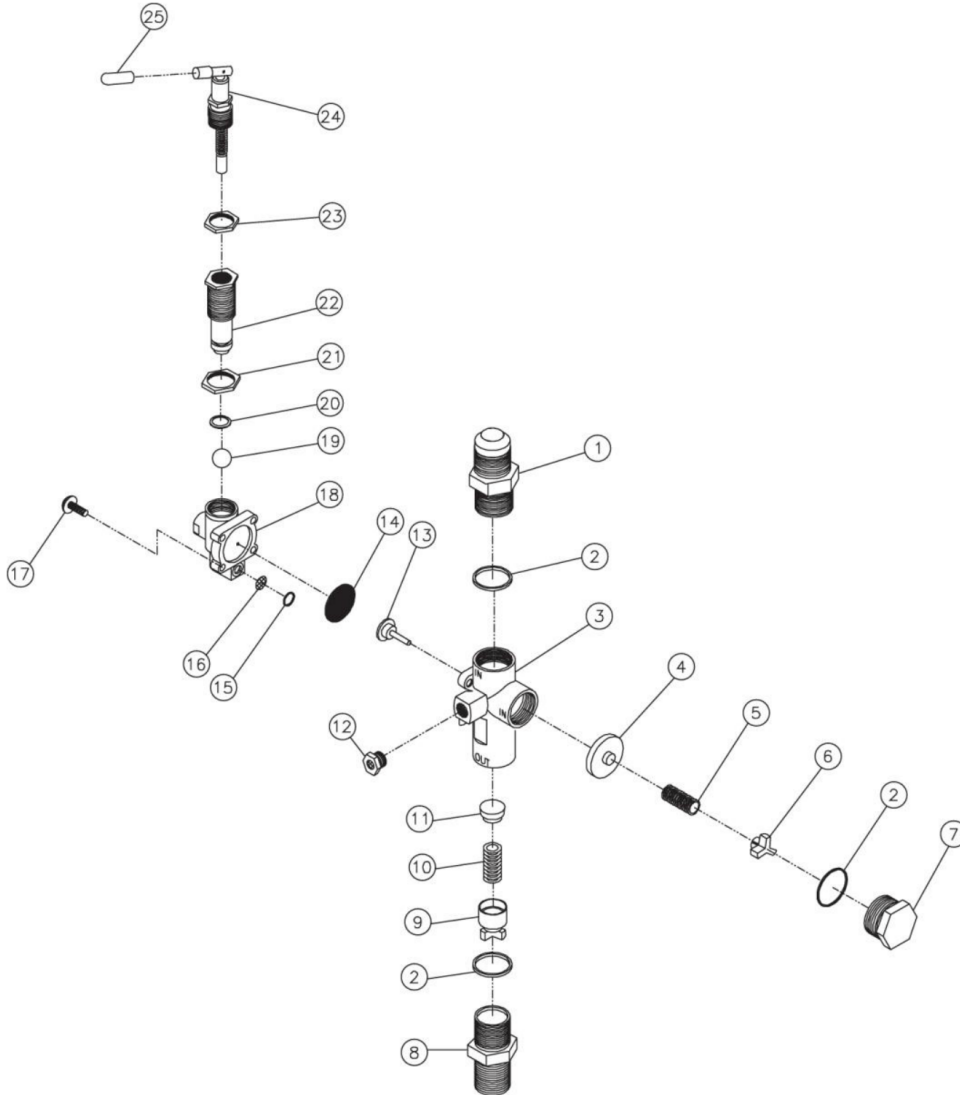
Id	Item #	Description	Quantity	Rev	Comments
1	27-8807	BOLT	1		
2	46-1156	AFTER COOLER	1		
3	22-0385	SAFETY VALVE	1		
4	27-8032	BOLT	5		
5	25-0439	O-RING	3		
6	28-1021	WASHER	6		
7	27-8934	BOLT	6		
8	N/A	AIR SHROUD	1		
9	27-8002	BOLT	6		
10	22-0386	SAFETY VALVE	1		
11	27-9575	SCREW	9		

Id	Item #	Description	Quantity	Rev	Comments
12	46-1157	INTER COOLER	1		
13	25-0440	O-RING	1		
14	46-0816	INTER COOLER COVER	1		
15	27-8906	SCREW	4		
16	46-1158	PUMP HEAD	1		
17	N/A Sep.	HEAD GASKET (SEE 70-0240)	1		
18	22-0283	VALVE PLATE ASSEMBLY	1		
19	N/A Sep.	CYLINDER GASKET (SEE 70-0240)	1		
20	46-0817	CYLINDER	1		
21	N/A Sep.	CRANKCASE GASKET (SEE 70-0240)	1		
22	N/A	COMPLETE PISTON	1		
23	70-0238	RING SET KIT	1		
24	N/A	CONNECTING ROD	1		
25	N/A	CONNECTING ROD BEARING	2		
26	27-8194	SCREW	6		
27	46-0818	CRANKCASE FILL HOLE PLUG W/ O-RING	1		
28	46-0819	OIL FILL END CAP	1		
29	N/A Sep.	OIL FILL END CAP GASKET (SEE 70-0240)	1		
30	46-0820	OIL LEVEL SIGHT GLASS W/ O-RING	1		
31	39-0106	OIL DRAIN PLUG	1		
32	N/A	OIL PAN	1		
33	N/A Sep.	OIL PAN O-RING (SEE 70-0240)	1		
34	46-0821	ISOLATOR	4		
35	N/A	CRANKCASE	1		
36	48-0060	BALL BEARING	1		
37	N/A	PISTON CRANKSHAFT	1		
38	48-0024	BALL BEARING	1		
39	N/A Sep.	FRONT END CAP GASKET (SEE 70-0240)	1		
40	26-0208	CRANKSHAFT SEAL	1		
41	46-0822	FRONT END CAP	1		
42	27-8033	BOLT	5		
43	10-0130	FLYWHEEL	1		
44	28-1032	WASHER	1		
45	43-0102	KEY	1		
46	N/A	COMPLETE PISTON	1		
47	70-0239	RING SET KIT	1		
48	N/A	CONNECTING ROD	1		
KIT	70-0240	GASKET KIT (INC. 5, 13, 17, 19, 21, 29, 33, 39)			



AC2-PH08-30M / AC2-PH08-30M (sn:20024615-99999999)

PILOT VALVE



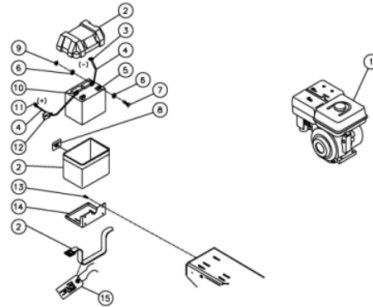
Id	Item #	Description	Quantity	Rev	Comments
1	N/A	INLET PORT FITTING	1		
2	N/A Sep.	O-RING (SEE 70-0241)	3		
3	N/A	MAIN BODY	1		
4	N/A Sep.	PISTON ASSEMBLY-UNLOADER VALVE (SEE 70-0241)	1		
5	N/A Sep.	SPRING-UNLOADER VALVE (SEE 70-0241)	1		
6	N/A	SPRING SEAT-UNLOADER VALVE	1		
7	N/A	CAP	1		

Id	Item #	Description	Quantity	Rev	Comments
8	N/A	DISCHARGE PORT FITTING	1		
9	N/A	SPRING SEAT ASSEMBLY-CHECK VALVE	1		
10	N/A Sep.	SPRING-CHECK VALVE (SEE 70-0241)	1		
11	N/A Sep.	PISTON-CHECK VALVE (SEE 70-0241)	1		
12	23-0419	MUFFLER	1		
13	N/A Sep.	STEM UNLOADER (SEE 70-0241)	1		
14	N/A Sep.	DIAPHRAM (SEE 70-0241)	1		
15	N/A Sep.	O-RING (SEE 70-0241)	1		
16	N/A Sep.	SCREEN (SEE 70-0241)	1		
17	N/A	SCREW W/WASHER	4		
18	N/A	PILOT BODY	1		
19	N/A Sep.	BALL (SEE 70-0241)	1		
20	N/A Sep.	O-RING (SEE 70-0241)	1		
21	N/A	DIFFERENTIAL ADJUSTING LOCKNUT	1		
22	N/A	DIFFERENTIAL ADJUSTING NUT	1		
23	N/A	PRESSURE ADJUSTING LOCKNUT	1		
24	N/A Sep.	PRESSURE ADJUSTING TOGGLE ASSEMBLY (SEE 70-0241)	1		
25	N/A	RED TOGGLE COVER	1		
KIT	70-0241	REPAIR KIT (INC. 2 EACH 3, 4-5, 10-11, 13-16, 19-20, 24			



AC2-PH08-30M / AC2-PH08-30M (sn:20024615-99999999)

HONDA ELECTRIC START OPTION AX-0017

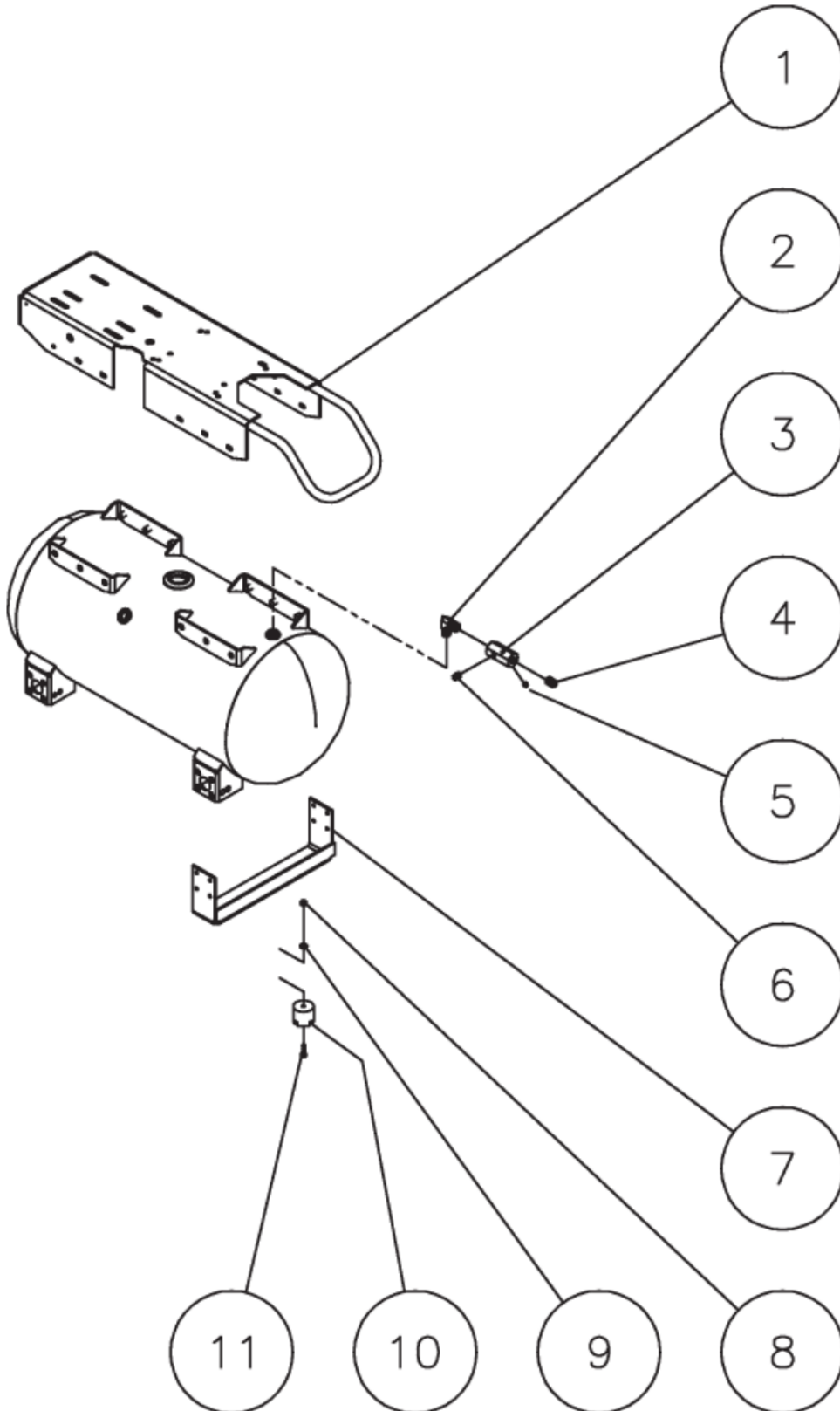


Id	Item #	Description	Quantity	Rev	Comments
1	1-0126	ENGINE- HONDA 8HP ELECTRIC START	1		
2	33-0092	BATTERY BOX	1		
3	32-0744	TERMINAL	1		
4	32-0065	BATTERY CABLE *(THREE FEET REQUIRED)	1		

Id	Item #	Description	Quantity	Rev	Comments
5	32-0058	BATTERY	1		
6	28-0003	WASHER	4		
7	27-0066	BOLT	2		
8	34-0589	DECAL- BATTERY	1		
9	30-0157	LOCKNUT	2		
10	32-0097	TERMINAL	2		
11	32-0098	TERMINAL	1		
12	33-0004	BATTERY CABLE COVER	1		
13	27-9524	BOLT	4		
14	20-0625A01	BATTERY BOX BRACKET	1		
15	34-0096	TAG- BATTERY	1		

*MUST ORDER IN ONE FOOT LENGTHS

AX-OPTIONS BREAKS



Id	Item #	Description	Quantity	Rev	Comments
1	5-0198A01	BASE PLATE ASSEMBLY	1		
2	24-0267	ELBOW	1		
3	24-0266	MANIFOLD	1		
4	24-0175	NIPPLE	1		

Id	Item #	Description	Quantity	Rev	Comments
5	24-0082	PLUG	1		
6	24-0009	PLUG	1		
7	20-0671A01	SUPPORT FOOT BRACKET	1		
8	30-0157	LOCKNUT	2		
9	28-0003	WASHER	2		
10	14-0008	ISOLATOR	2		
11	27-0068	SCREW	2		