



- **ATV Performance Tuning and Modifications**

**ATV Performance Tuning and Modifications** How to install a high flow exhaust on an ATV Steps for re mapping the ECU for improved performance How to choose the right gear ratio for your riding style When to upgrade the clutch springs and weights in an ATV Benefits of a big bore kit for ATV power output How to tune jetting for altitude changes Steps for adding a performance air filter to your ATV How to improve throttle response through tuning Tips for balancing top speed and low end torque in an ATV How to reduce engine lag with proper tuning adjustments When to upgrade the cooling system for performance riding How to test performance gains after modifications

- **Seasonal and Environment Specific ATV Preparation**

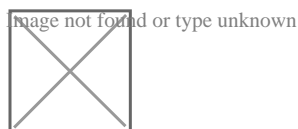
**Seasonal and Environment Specific ATV Preparation** How to prepare your ATV for winter storage Steps for setting up your ATV for deep snow riding How to waterproof your ATV for water crossings Tips for preventing rust after riding in wet conditions How to adjust jetting for hot summer temperatures Steps for protecting your ATV from saltwater corrosion How to prepare your ATV for muddy trail conditions What to pack for a long distance ATV expedition How to maintain your ATV during hunting season use Techniques for cleaning your ATV after sand dune riding How to set up tire pressure for different terrains When to change coolant for seasonal temperature shifts

- **About Us**

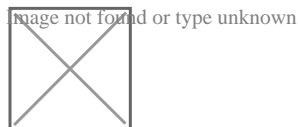


Okay, lets talk ECUs and performance, like were chatting over coffee. Brake service improves stopping power and safety **atv push mower** factory. So, youre thinking about remapping your cars ECU to squeeze out some extra oomph. Sounds exciting, right? But before you dive in, understand its not quite as simple as plugging in a magic box and suddenly having a race car. There are steps involved, and doing it right is crucial for both performance gains and the long-term health of your vehicle.

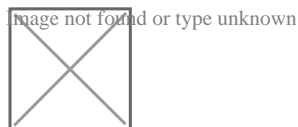
First things first: research. I mean, *really* research. Find a reputable tuner. This isn't the time to go with the cheapest option you find on the internet. Look for a tuner with experience specifically with your make and model of car. Read reviews, check their credentials, and talk to other people whove used their services. A good tuner will understand the nuances of your engine and how to safely extract more power. Theyll also be able to explain the potential downsides.



Next, its time for a diagnostic check. Before any remapping happens, your car needs a clean bill of health. A good tuner will run a thorough diagnostic scan to identify any existing problems. Are there any fault codes lurking? Is the engine running smoothly? Are all the sensors functioning correctly? Remapping a sick engine is like putting a band-aid on a broken leg; its not going to fix the underlying issue and could actually make things worse. Address any existing problems before proceeding.



Then comes the data logging. This is where the tuner gathers information about how your engine is performing under various conditions. They'll hook up a data logger and take your car for a drive, monitoring things like air-fuel ratio, boost pressure (if you have a turbo), ignition timing, and engine load. This data provides a baseline for comparison and helps the tuner understand how the engine responds to different inputs. Its like taking a snapshot of your engines current state.



Now, the actual remapping. This is where the tuner modifies the software within the ECU to optimize engine parameters. They might adjust fuel delivery, ignition timing, boost pressure, and other settings to increase power and torque. This is a delicate process, and its where the tuners expertise really shines. Theyre essentially telling the engine to work a little harder, but within safe limits. A good tuner will make small, incremental changes and monitor the engines response closely.

After the initial remap, more data logging is essential. The tuner will take your car for another drive, logging the same parameters as before. This allows them to see how the engine is responding to the changes and make further adjustments as needed. It's an iterative process, a constant cycle of tweaking and testing until the desired performance is achieved while maintaining engine safety and reliability. This is also a good time for you to provide feedback. How does the car feel? Is the throttle response improved? Are you seeing the gains you expected?

Finally, its important to understand that a remap isnt a set-it-and-forget-it kind of thing. You'll need to consider factors like fuel quality and driving style. You might need to use higher-octane fuel to prevent knocking or pinging. Also, aggressive driving will put more stress on the engine, so its important to monitor things like oil temperature and coolant temperature. Regular maintenance is even more critical after a remap.

So, there you have it. Remapping an ECU can be a great way to improve your cars performance, but its important to do it right. Research, diagnostics, data logging, careful tuning, and ongoing monitoring are all essential steps. Treat your engine with respect, and it will reward you with more power and a more enjoyable driving experience. But remember, there are risks involved, so choose your tuner wisely and always prioritize engine health.

## About Can-Am motorcycles

This article is about Can-Am motorcycles from 1972 to 1987. For the Can-Am ATV model range, see Can-Am Off-Road. For the Can-Am Roadster model range, see BRP Can-Am Spyder Roadster.

# Can-Am Motorcycles

	Valcourt
<b>Headquarters</b>	, Canada
<b>Products</b>	Motorcycles
<b>Parent</b>	Bombardier Corporation

**Can-Am** is a Canadian subsidiary of Bombardier Recreational Products (BRP) founded in 1972 and based in Valcourt, Quebec.<sup>[1][2]</sup> The company produced off-road motorcycles from 1972 to 1987. In 1997, the company was reformed and began production of ATV vehicles as well as the Can-Am Spyder three-wheeled motorcycle. In 2024 Can-Am released two new electric motorcycle models.<sup>[3]</sup>

## History

[edit]

### Brand history

[edit]

Can-Am was created as a subsidiary of the Bombardier Corporation in 1972.<sup>[4]</sup> The barn that housed the original Can-Am headquarters still exists at the Bombardier test facility within the Circuit Yvon Duhamel and is located a few miles south of Valcourt, Quebec.<sup>[1]</sup> The right side of the barn housed the offices for design and engineering, and the left side was used for fabrication.<sup>[2]</sup> Can-Am's name was the result of a Bombardier employee competition based on the anticipated Canadian vs. American market, though the existence of the Can-Am racing series necessitated the purchase of rights to the name.<sup>[2]</sup>

Based on the Bultaco design principle of a standard-size frame that could accommodate a range of differently sized engines, engineers Gary Robison, Bob Fisher, and Camille Picard, and former 500cc Motocross World Champion Jeff Smith designed a competition motorcycle from scratch using engines supplied by the Austrian firm, Rotax, another Bombardier subsidiary.<sup>[1][5]</sup> Their design featured steering head bearing cups that allowed for the adjustment of the steering head angle; these were mainly driven by simplified production on the assembly line.<sup>[2]</sup>

The machines made an immediate impact, with riders winning Gold, Silver and bronze medals at the International Six Days Trial.<sup>[1]</sup> The International Six Days Trial, now known as the International Six Days Enduro, is a form of off-road motorcycle Olympics which is the oldest annual competition sanctioned by the FIM dating back to 1913.<sup>[6]</sup>

In 1974, the Can-Am factory racing team swept the AMA 250cc motocross national championship with Can-Am riders Gary Jones, Marty Tripes and Jimmy Ellis, finishing first, second and third in the championship although, Tripes had raced for most of the season on a Husqvarna motorcycle before being hired by Can-Am for the last race of the season.<sup>[4][7][8][9]</sup>

Can-Am enduro rider Skip Olson finished second to Dick Burleson in the 1976 AMA Enduro national championship.<sup>[10]</sup> Can-Am's motorcycle racing success enhanced the brand's image

and they gained a reputation for their high horsepower outputs.<sup>[4][11]</sup> In 1983, Can-Am released a 250 cc road racing motorcycle. Using two 125 cc Rotax motors with a conjoined crankshaft, the motorcycle featured a bespoke frame with an aluminum swingarm.<sup>[2]</sup>

When the 1973 oil crisis precipitated a decrease in sales of recreational vehicles, Bombardier was forced to reduce their snowmobile and motorcycle production.<sup>[12]</sup> Bombardier then shifted its priority from recreational products towards the transit equipment industry and then, several years later, into aircraft manufacturing.<sup>[12]</sup> As a result, investments in product development were reduced substantially and, Can-Am was unable to keep pace with Japanese manufacturers as rapid advancements in motocross technology progressed during the 1970s and 1980s.<sup>[12][13]</sup> In 1983, Bombardier licensed the brand and outsourced development and production of the Can-Am motorcycles to Armstrong-CCM Motorcycles of Lancashire, England.<sup>[4][13]</sup> 1987 was the final year of Can-Am motorcycle production.<sup>[1][4]</sup>

## Rebirth and rebranding

[edit]

In 2006, Bombardier reintroduced the Can-Am brand with its Can-Am Off-Road range of all-terrain vehicles (ATV). In 2007, the Can-Am brand was also used for the Can-Am Spyder, a new three-wheeled roadster.

## References

[edit]

- <sup>1</sup> <sup>**a b c d e**</sup> *"History of Can-Am®". [www.familypowersports.com](http://www.familypowersports.com). 2019-02-21. Retrieved 2022-07-28.*
- <sup>2</sup> <sup>**a b c d e**</sup> *"The Beginning". [Canned Ham](http://CannedHam.com). Retrieved 2022-07-28.*
- <sup>3</sup> <sup>**a**</sup> *"Canada's BRP Adds Two Electric Motorcycles To Can-Am's Offerings". [forbes](https://www.forbes.com). Retrieved 2024-08-31.*
- <sup>4</sup> <sup>**a b c d e**</sup> *"Can-Am's history". [cyclenews.com](http://cyclenews.com). Retrieved 31 March 2023.*
- <sup>5</sup> <sup>**a**</sup> *"Bike Design". [canned-ham.com](http://canned-ham.com). Retrieved 31 March 2023.*
- <sup>6</sup> <sup>**a**</sup> *"History of the International Six Days Trial". [ultimatemotorcycling.com](http://ultimatemotorcycling.com). 25 October 2010. Retrieved 22 February 2019.*
- <sup>7</sup> <sup>**a**</sup> *"Jeff Smith at the AMA Motorcycle Hall of Fame". [motorcyclemuseum.org](http://motorcyclemuseum.org). Retrieved 2 April 2012.*
- <sup>8</sup> <sup>**a**</sup> *"Gary Jones at the AMA Motorcycle Hall of Fame". [motorcyclemuseum.org](http://motorcyclemuseum.org). Retrieved 2 April 2012.*
- <sup>9</sup> <sup>**a**</sup> *"1974 Motocross Season". [racerxonline.com](http://racerxonline.com). Retrieved 23 November 2018.*
- <sup>10</sup> <sup>**a**</sup> *Assoc, American Motorcyclist (January 1977). Familiar Faces Fill the Forest, American Motorcyclist, January 1977, Vol. 31, No. 1, ISSN 0277-9358. Retrieved 2013-03-05.*
- <sup>11</sup> <sup>**a**</sup> *"BRP Returns To Two-Wheelers With The Can-Am Electric Motorcycle". [Woman Motorcycle Enthusiast](http://WomanMotorcycleEnthusiast.com). 2022-03-25. Retrieved 2022-07-28.*

12. ^ **a b c** *"Bombardier: Our history". bombardier.com. Retrieved 31 March 2023.*
13. ^ **a b** *"The Demise of Can-Am". canned-ham.com. Retrieved 31 March 2023.*

## About personal water craft

Redirect to:

- Personal watercraft
- **From a page move:** This is a redirect from a page that has been moved (renamed). This page was kept as a redirect to avoid breaking links, both internal and external, that may have been made to the old page name.

## About Street-legal vehicle

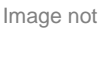
For other uses, see Street legal (disambiguation).

This article **needs additional citations for verification**. Please help improve this article by adding citations to reliable sources. Unsourced material may be challenged and removed.



*Find sources: "Street-legal vehicle" – news · newspapers · books · scholar · JSTOR (July 2010) (Learn how and when to remove this message)*

The examples and perspective in this article **may not represent a worldwide view of the subject**. You may improve this article, discuss the issue on the talk page, or create a new article, as appropriate. *(August 2024) (Learn how and when to remove this message)*



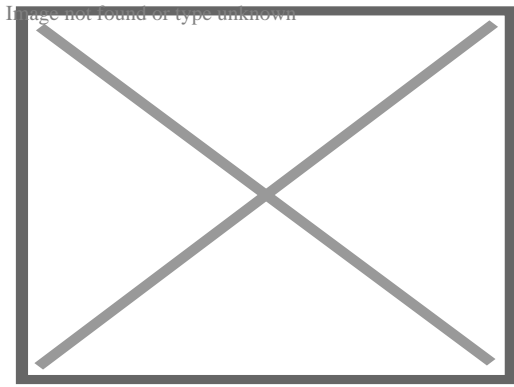
This article **has an unclear citation style**. The references used may be made clearer with a different or consistent style of citation and footnoting. *(August 2024) (Learn how and when to remove this message)*



This article **has multiple issues**. Please help **improve it** or discuss these issues on the **talk page**. *(Learn how and when to remove these messages)*

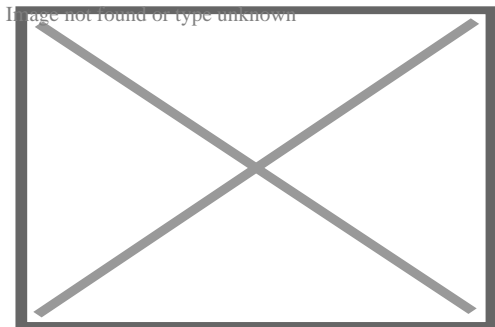


*(Learn how and when to remove this message)*



Two images showing a Mazda 323F's headlights retracted and visible.

**Street-legal, road-legal, or road-going**, refers to a vehicle such as a car, motorcycle, or light truck that is equipped and licensed for use on public roads, being therefore roadworthy. This will require specific configurations of lighting, signal lights, and safety equipment. Some specialty vehicles that will not be operated on roads, therefore, do not need all the features of a street-legal vehicle; examples are a vehicle used only off-road (such as a sandrail) that is trailered to its off-road operating area, and a racing car that is used only on closed race tracks and therefore does not need all the features of a street-legal vehicle. As well as motor vehicles, the street-legal distinction applies in some jurisdictions to track bicycles that lack street-legal brakes and lights. Street-legality rules can even affect racing helmets, which possess visual fields too narrow for use on an open road without the risk of missing a fast-moving vehicle.<sup>[1]</sup>



The Porsche 911 GT1 '98 "*Straßenversion*" (German: Roadworthy Version) is a street-legal racing car and a single copy of the racing version, that succeeded at the 24 Hours of Le Mans in 1998.

## Conditional

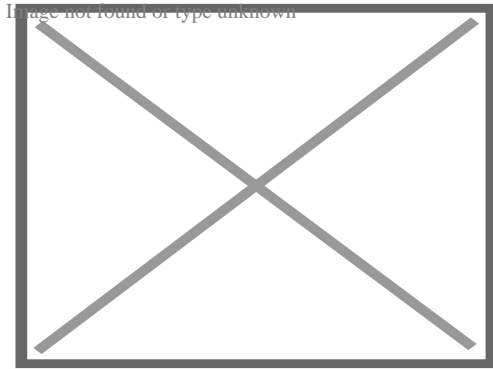
[edit]

Some vehicles may be street-legal only in certain areas, routes or use cases, such as UTVs or tractors only allowed on-road in rural areas or driving between different off-road areas/private properties.<sup>[2]</sup><sup>[3]</sup> Enduro dirt bikes on dirt/gravel roads in National parks for personal recreational use.<sup>[4]</sup> Small engine motorcycle/moped or microcars/quadricycle only

allowed on (low speed) streets and not (high speed) highways.<sup>[5][6]</sup> Vehicles imported from another country for testing, display or remanufacturing.<sup>[7]</sup> Rally cars or trophy trucks, immediately before, during and immediately after rallies.<sup>[8]</sup>

## Canada

[edit]



New kei trucks are illegal to drive on public roads in Canada

In Canada, all ten provinces follow a consistent set of national criteria issued by Transport Canada for specific equipment required as part of a street-legal vehicle. In some provinces, the *Highway Traffic Act* is a matter of provincial jurisdiction; provinces with such an Act include Ontario, Manitoba, and Newfoundland and Labrador.

Many but not all U.S.-model vehicles do qualify for import to Canada, but must meet requirements for items such as daytime running lights (standard on Canadian-market vehicles since 1991, but not required in the U.S.), anti-theft immobilisers, and anchorage points for child seats.<sup>[9]</sup> Cars from other countries (such as the UK) typically do not qualify, as standards are too widely divergent from those in Canada.<sup>[10]</sup>

## India

[edit]

Main article: Automotive Industry Standards

Requirements for manufacturing, registering, and operating motor vehicles in India are codified by the Central Motor Vehicles Rules (CMVR), as maintained by the Ministry of Road Transport and Highways.<sup>[11]</sup> Street-legal two-, three-, and four-wheeled vehicles must comply with structure, safety equipment, and operating conditions in CMVR 93–125.<sup>[12]</sup>

## United Kingdom

[edit]

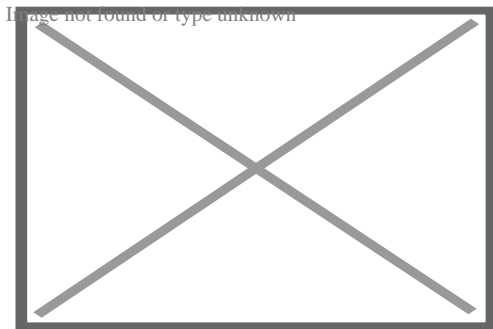


In the United Kingdom, vehicles must pass the Single Vehicle Approval (SVA) scheme, a pre-registration inspection for cars and light goods vehicles<sup>[13]</sup> that have not been type-approved to British or European standards. Since August 2001, there have been two levels of SVA, those being 'standard' and 'enhanced'. The standard SVA is applied to vehicles such as left-hand drive vehicles, personally imported vehicles, amateur-built vehicles and armoured vehicles, to name a few. Vehicles which do not fall into one of the standard SVA categories – for example a vehicle of right-hand drive – require enhanced SVA in addition to standard SVA inspections.<sup>[14]</sup>

The SVA is in the process of being replaced by the Individual Vehicle Approval (IVA).<sup>[13]</sup>

## United States

[edit]



Tesla Cybertruck is not legal in Europe or China and exclusively sold in USA and Canada

In the United States, the individual states have the authority to determine, by means of statutes and regulations, which types of vehicles are permitted on public streets, as a function of police power. Vehicles that are considered street-legal in the U.S. include automobiles, trucks, and motorcycles.<sup>[15]</sup> Some vehicles that are not generally sold for on-road driving – such as all-terrain vehicles (ATVs) and golf carts – can potentially be adapted for street use, if permitted by state law.<sup>[16][17]</sup>

Most requirements for automobiles are largely consistent between U.S. states.<sup>[18]</sup> A notable exception is California emission control, which has traditionally been more strict than that in other states.<sup>[19]</sup> Common requirements for automobiles include structure (examples: hood) and safety equipment (examples: headlamps and bumpers).<sup>[20]</sup>

Common requirements for motorcycles include side view mirrors and a dedicated seat in order to transport a passenger.<sup>[21]</sup> However, states vary widely on other equipment such as turn signals.<sup>[21]</sup>

**See also**

[edit]

- Roadworthiness
- Rolling coal

## References

[edit]

- ^ "Frequently Asked Questions about Snell and Helmets". Snell Memorial Foundation, Inc. Archived from the original on 2012-09-22. Retrieved 2012-10-03.
- ^ Transport for NSW (2021-01-29). "Ultra-light utility vehicle: Registration, uses and equipment | NSW Government". www.nsw.gov.au. Archived from the original on 2024-04-24. Retrieved 2024-04-24.
- ^ "Agricultural Vehicle and Combination Road Access in NSW" (PDF).
- ^ "vic roads - Recreation Motorcycle Registration".
- ^ "Motorcycles in France". Just Landed. Archived from the original on 2024-04-24. Retrieved 2024-04-24.
- ^ ""Ã"a,-Â•Ã¶Å²Ä´Ã¼Ä¹Ä·Ã¨Ä!Ä•Ã¶Ä•Ë†Ä!Ä³â€¢ÄºÄ, Å Ã¨Ä·Ä¬Ä¹Ä¼Ä'Ä¥Ë†Ä°Ä¶Äªâ€¢Ä!ËœÄ¬Ä¸Ä½Ä¶Ä¾, â€¢œÄ!Ä Ä(in Chinese). Archived from the original on 2024-08-28. Retrieved 2024-04-24.
- ^ Here's Why the 2022 Toyota Land Cruiser 300-Series Should Be Sold in America. Retrieved 2024-04-24 – via www.youtube.com.
- ^ NSW, Transport for (2021-01-11). "Registering a rally vehicle | NSW Government". www.nsw.gov.au. Archived from the original on 2024-04-24. Retrieved 2024-04-24.
- ^ The Registrar of Imported Vehicles, a private company under contract by Transport Canada, provides some information on which US-model vehicles are or can be made street-legal in Canada.
- ^ "Importing vehicles purchased in countries OTHER than the United States". Transport Canada. Government of Canada. 1 January 2013. Archived from the original on 5 November 2018. Retrieved 4 November 2018.
- ^ "Central Motor Vehicles Rules 1989". Ministry of Road Transport and Highways. 2012-06-18. Archived from the original on 2013-10-13. Retrieved 2013-10-13.
- ^ "Rules relating to Type Approval of Vehicles and Methods of Establishing Compliance". Society of Indian Automobile Manufacturers (SIAM). 2005. Archived from the original on 2011-08-21.
- ^ **a b** "7. Single Vehicle Approval". Guide: Vehicle approval. GOV.UK. 23 September 2013. Archived from the original on 28 August 2024. Retrieved 13 October 2013.
- ^ "The UK Single Vehicle Approval Scheme". GOV.UK. Archived from the original on September 22, 2009.
- ^ "State Motorcycle Laws". American Motorcyclist Association. Archived from the original on 2012-10-05. Retrieved 2012-10-03.

16. ^ "State ATV Information". Consumer Product Safety Commission. Retrieved 21 March 2018.
17. ^ "Attorney General Opinion No. 94-102". Kansas Attorney General Opinions. Washburn University School of Law. 17 August 1994. Retrieved 21 March 2018.
18. ^ Hinkelman, Edward G. (2003). *Importers Manual USA*. World Trade Press. p. 272. ISBN 1885073933.
19. ^ Overly, Steven (23 February 2017). "Even in Trump's America, California could decide how cleanly your car runs". *Washington Post*. Retrieved 21 March 2018.
20. ^ "10 Common Illegal Alterations Made to Cars". National Motorists Association Blog. 3 April 2012. Archived from the original on 28 August 2024. Retrieved 21 March 2018.
21. ^ **a b** American Motorcyclist Association (27 September 2012), *Motorcycle Laws by State* (Revised 9-27-2012), archived from the original on 14 October 2013

Authority control databases: National      Get more information  
 Edit this at Wikidata

About Shorewood Home & Auto (Formerly Circle Tractor)

Driving Directions in Will County

---

**auto atv**

41.594748226806, -87.999739790257

Starting Point

Shorewood Home & Auto (Formerly Circle Tractor), 13639 W 159th St, Homer Glen, IL 60491, USA

Destination

[Open in Google Maps](#)

**ATV Dealer**

41.557324506025, -87.928742225499

Starting Point

Shorewood Home & Auto (Formerly Circle Tractor), 13639 W 159th St, Homer Glen, IL 60491, USA

Destination

[Open in Google Maps](#)

**ATV Dealer**

41.558509620271, -87.95950362543

Starting Point

Shorewood Home & Auto (Formerly Circle Tractor), 13639 W 159th St, Homer Glen, IL 60491, USA

Destination

[\*\*Open in Google Maps\*\*](#)

**atv stores in illinois**

41.631170758126, -87.9510205

Starting Point

Shorewood Home & Auto (Formerly Circle Tractor), 13639 W 159th St, Homer Glen, IL 60491, USA

Destination

[\*\*Open in Google Maps\*\*](#)

**judson outdoor power & atv**

41.57515764718, -88.032512736562

Starting Point

Shorewood Home & Auto (Formerly Circle Tractor), 13639 W 159th St, Homer Glen, IL 60491, USA

Destination

**[Open in Google Maps](#)**

**atv push mower**

41.619926653045, -87.892455610928

Starting Point

Shorewood Home & Auto (Formerly Circle Tractor), 13639 W 159th St, Homer Glen, IL 60491, USA

Destination

**[Open in Google Maps](#)**



**atv illinois for sale**

41.661417333599, -87.915319377447

Starting Point

Shorewood Home & Auto (Formerly Circle Tractor), 13639 W 159th St, Homer Glen, IL 60491, USA

Destination

**[Open in Google Maps](#)**

**atv push mower**

41.576559514074, -88.017102969337

Starting Point

Shorewood Home & Auto (Formerly Circle Tractor), 13639 W 159th St, Homer Glen, IL 60491, USA

Destination

**[Open in Google Maps](#)**

**used atv mowers for sale**

41.606342917118, -87.909382977642

Starting Point

Shorewood Home & Auto (Formerly Circle Tractor), 13639 W 159th St, Homer Glen, IL 60491, USA

Destination

**[Open in Google Maps](#)**

auto atv

41.58938458501, -87.942080491627

Starting Point

Shorewood Home & Auto (Formerly Circle Tractor), 13639 W 159th St, Homer Glen, IL 60491, USA

Destination

[Open in Google Maps](#)

**Google Maps Location**

<https://www.google.com/maps/place/Shorewood+Home+%26+Auto+%28Formerly+Circle+Tractor%29/@41.58938458501,-87.942080491627,25.2z/data=!4m6!3m5!1s0x880e41f2e579f223:0xe5c5c23b2b8dc77a!8m2!3d41.598588!4d-87.9510205!16s%2F>

Click below to open this location on Google Maps

[Open in Google Maps](#)

**Google Maps Location**

<https://www.google.com/maps/place/Shorewood+Home+%26+Auto+%28Formerly+Circle+Tractor%29/@41.58938458501,-87.942080491627,25.2z/data=!4m6!3m5!1s0x880e41f2e579f223:0xe5c5c23b2b8dc77a!8m2!3d41.598588!4d-87.9510205!16s%2F>

Click below to open this location on Google Maps

[Open in Google Maps](#)

### Google Maps Location

<https://www.google.com/maps/place/Shorewood+Home+%26+Auto+%28Formerly+Circle+Tractor%29/@41.587.887582235395,25.2z/data=!4m6!3m5!1s0x880e41f2e579f223:0xe5c5c23b2b8dc77a!8m2!3d41.598588!4d87.9510205!16s%2F>

Click below to open this location on Google Maps

[Open in Google Maps](#)

### Google Maps Location

<https://www.google.com/maps/place/Shorewood+Home+%26+Auto+%28Formerly+Circle+Tractor%29/@41.587.989359069024,25.2z/data=!4m6!3m5!1s0x880e41f2e579f223:0xe5c5c23b2b8dc77a!8m2!3d41.598588!4d87.9510205!16s%2F>

Click below to open this location on Google Maps

[Open in Google Maps](#)

### Google Maps Location

<https://www.google.com/maps/place/Shorewood+Home+%26+Auto+%28Formerly+Circle+Tractor%29/@41.687.96819704524,25.2z/data=!4m6!3m5!1s0x880e41f2e579f223:0xe5c5c23b2b8dc77a!8m2!3d41.598588!4d87.9510205!16s%2F>

Click below to open this location on Google Maps

[Open in Google Maps](#)

### Google Maps Location

<https://www.google.com/maps/place/Shorewood+Home+%26+Auto+%28Formerly+Circle+Tractor%29/@41.687.907293353371,25.2z/data=!4m6!3m5!1s0x880e41f2e579f223:0xe5c5c23b2b8dc77a!8m2!3d41.598588!4d87.9510205!16s%2F>

Click below to open this location on Google Maps

[Open in Google Maps](#)

### Google Maps Location

<https://www.google.com/maps/place/Shorewood+Home+%26+Auto+%28Formerly+Circle+Tractor%29/@41.688.005949138067,25.2z/data=!4m6!3m5!1s0x880e41f2e579f223:0xe5c5c23b2b8dc77a!8m2!3d41.598588!4d87.9510205!16s%2F>

Click below to open this location on Google Maps

[Open in Google Maps](#)

### Google Maps Location

<https://www.google.com/maps/place/Shorewood+Home+%26+Auto+%28Formerly+Circle+Tractor%29/@41.687.927490499581,25.2z/data=!4m6!3m5!1s0x880e41f2e579f223:0xe5c5c23b2b8dc77a!8m2!3d41.598588!4d-87.9510205!16s%2F>

Click below to open this location on Google Maps

[Open in Google Maps](#)

### Google Maps Location

<https://www.google.com/maps/place/Shorewood+Home+%26+Auto+%28Formerly+Circle+Tractor%29/@41.687.9730747233,25.2z/data=!4m6!3m5!1s0x880e41f2e579f223:0xe5c5c23b2b8dc77a!8m2!3d41.598588!4d-87.9510205!16s%2F>

Click below to open this location on Google Maps

[Open in Google Maps](#)

### Google Maps Location

<https://www.google.com/maps/place/Shorewood+Home+%26+Auto+%28Formerly+Circle+Tractor%29/@41.588.024051861695,25.2z/data=!4m6!3m5!1s0x880e41f2e579f223:0xe5c5c23b2b8dc77a!8m2!3d41.598588!4d-87.9510205!16s%2F>

Click below to open this location on Google Maps

[Open in Google Maps](#)

### Google Maps Location

<https://www.google.com/maps/dir/?api=1&origin=41.6017944719,-88.000192733008&destination=Shorewood+Home+%26+Auto+%28Formerly+Circle+Tractor%29%2C+1363>

Click below to open this location on Google Maps

[Open in Google Maps](#)

### Google Maps Location

<https://www.google.com/maps/dir/?api=1&origin=41.557324506025,-87.928742225499&destination=Shorewood+Home+%26+Auto+%28Formerly+Circle+Tractor%29%2C+1363>

Click below to open this location on Google Maps

[Open in Google Maps](#)

### Google Maps Location

<https://www.google.com/maps/dir/?api=1&origin=41.608363577474,-87.913026040309&destination=Shorewood+Home+%26+Auto+%28Formerly+Circle+Tractor%29%2C+13639>

Click below to open this location on Google Maps

[Open in Google Maps](#)

#### Google Maps Location

<https://www.google.com/maps/dir/?api=1&origin=41.608455488079,-88.008265754223&destination=Shorewood+Home+%26+Auto+%28Formerly+Circle+Tractor%29%2C+13639>

Click below to open this location on Google Maps

[Open in Google Maps](#)

#### Google Maps Location

<https://www.google.com/maps/dir/?api=1&origin=41.620612367198,-87.990129262512&destination=Shorewood+Home+%26+Auto+%28Formerly+Circle+Tractor%29%2C+13639>

Click below to open this location on Google Maps

[Open in Google Maps](#)

#### Google Maps Location

<https://www.google.com/maps/dir/?api=1&origin=41.581323565378,-87.961782730256&destination=Shorewood+Home+%26+Auto+%28Formerly+Circle+Tractor%29%2C+13639+ready+pack>

Click below to open this location on Google Maps

[Open in Google Maps](#)

#### Google Maps Location

<https://www.google.com/maps/dir/?api=1&origin=41.558509620271,-87.95950362543&destination=Shorewood+Home+%26+Auto+%28Formerly+Circle+Tractor%29%2C+13639>

Click below to open this location on Google Maps

[Open in Google Maps](#)

#### Google Maps Location

<https://www.google.com/maps/dir/?api=1&origin=41.529982967362,-87.97217743365&destination=Shorewood+Home+%26+Auto+%28Formerly+Circle+Tractor%29%2C+13639>

Click below to open this location on Google Maps

[Open in Google Maps](#)

## Google Maps Location

[https://www.google.com/maps/dir/?api=1&origin=41.588311116463,-](https://www.google.com/maps/dir/?api=1&origin=41.588311116463,-87.958021423633&destination=Shorewood+Home+%26+Auto+%28Formerly+Circle+Tractor%29%2C+13639)

[87.958021423633&destination=Shorewood+Home+%26+Auto+%28Formerly+Circle+Tractor%29%2C+13639](https://www.google.com/maps/dir/?api=1&origin=41.588311116463,-87.958021423633&destination=Shorewood+Home+%26+Auto+%28Formerly+Circle+Tractor%29%2C+13639)

Click below to open this location on Google Maps

[Open in Google Maps](https://www.google.com/maps/dir/?api=1&origin=41.588311116463,-87.958021423633&destination=Shorewood+Home+%26+Auto+%28Formerly+Circle+Tractor%29%2C+13639)

## Google Maps Location

[https://www.google.com/maps/dir/?api=1&origin=41.543312099985,-](https://www.google.com/maps/dir/?api=1&origin=41.543312099985,-87.94325823519&destination=Shorewood+Home+%26+Auto+%28Formerly+Circle+Tractor%29%2C+13639)

[87.94325823519&destination=Shorewood+Home+%26+Auto+%28Formerly+Circle+Tractor%29%2C+13639](https://www.google.com/maps/dir/?api=1&origin=41.543312099985,-87.94325823519&destination=Shorewood+Home+%26+Auto+%28Formerly+Circle+Tractor%29%2C+13639)

Click below to open this location on Google Maps

[Open in Google Maps](https://www.google.com/maps/dir/?api=1&origin=41.543312099985,-87.94325823519&destination=Shorewood+Home+%26+Auto+%28Formerly+Circle+Tractor%29%2C+13639)

## Frequently Asked Questions

**What benefits can I expect from remapping my ATVs ECU?**

Remapping your ATVs ECU can lead to improved horsepower and torque, better throttle response, increased fuel efficiency, and optimized performance tailored to your specific riding conditions.

**Is remapping the ECU safe for my ATVs engine?**

When done correctly by a professional using high-quality tuning software, ECU remapping is generally safe. However, improper tuning can lead to engine damage or voiding of warranties. Its crucial to work with experienced technicians who understand your ATV model.



How long does the ECU remapping process take at your dealership?

The duration of ECU remapping varies based on the ATV model and specific modifications desired. Typically, the process takes 1-3 hours, including installation and initial testing. We'll provide a more accurate timeline after assessing your vehicle.

Shorewood Home & Auto

Phone : +17083010222

Email : +17083010222

City : Shorewood

State : IL

Zip : 60404

Address : 1002 W Jefferson St

### **Google Business Profile**

Company Website : <https://www.shorewoodhomeandauto.com/>

### USEFUL LINKS

**ATV Dealer**

**ATV Repair**

**Sitemap**

**Privacy Policy**

**About Us**

Follow us