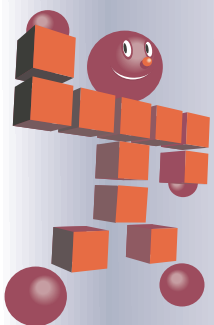




IGUCHIBEAR PRODUCT CATALOGUE

ISB Ball Transfer



株式会社井口機工製作所
IGUCHI KIKO CO., LTD.

CONTENTS

ISB Ball Transfer

What is a Ball Transfer?	3
--------------------------------	---

Precision Machined Units

Flanged Mounting Type

IS/IS-S Series for Upward Use	4
IK Series for Downward Use	6
IA/IA-R Series for Upward Use (Aluminum) ...	7

Studded Mounting Type

IS-N/IS-SNM/IS-SN Series for Upward Use ..	8
CP-H Series for Upward/CP-D Series for Downward	10
IK-N/IK-NM/IK-SNM Series for Downward Use ..	12

Spring Inserted Type

IS-B/IS-BF/IS-BM Series for Upward Use	14
IS-BK/IS-BD Series for Upward Use	15

Drop-In Type

IS-D/ND Series for Upward Use	16
S Series for Upward Use (Single Directional)	17

Press Molded Type Unit

Flanged Mounting Type

IM/IM-S/IM-J/IM-SJ	
IM-R Series for Upward Use	18
IB/IB-S Series for Upward Use	20

Drop-In Type

US/US-S/US-J	
US-SJ Series for Upward Use	21

Spring Inserted Type

UM-B/UM-BJ Series for Upward Use (Drop-In) ..	22
---	----

Plastic Units

IJH/IJP Series for Upward Use	23
IP/IP-N Series for Upward Use (Flanged and Studded) ..	24
IPK Series for Downward Use	25

Units

MS Series Magnetic Sheet for Quick Installation	26
PZ Series Puzzle Units	28
CT Series Clip Rollers for Simple Trolleys	29
IBU, and IBT Series Ball Transfer Units	30

Trolleys Units

QL/QL-FUS Series Ball Transfer Units for Trolleys ..	32
--	----

Single-Directional Units

HIP Series Roller Tables for Trolleys	34
IR Series Rollers	35

Rotating Tables and Rings

IRT Series	36
IRT-M Series (Motorized)	37
IRL/IRL-T Series	38
IRH Series	40

Others

Surface Treatment	41
Usage Examples	42

ISB Ball Transfer

What is a Ball Transfer?

What is a Ball Transfer?

ISB ball transfer units consist of a large load-ball that sits upon small balls encapsulated in a hemispherical cup. ISB Ball Transfers fall into two categories; Ball-Up type for Upward Use, and Ball-Down type for Downward castor-like Use. Also, in some applications they are used as guides for side support. Their design creates a multi-directional, material handling system that enables heavy loads to be moved smoothly along with minimal effort and friction. They are designed to assist in transferring, directing, or facilitating loading of flat products in workplaces such as warehouses, production lines, port cargo handling facilities, semiconductor production systems, FPD production system, PV, Solar glass handling production lines, medical equipments, research laboratories, underground facilities of buildings and offices manufacturing or freight transfer. Similar to a roller system, the balls are installed within the table or work surface and the product rolls over the balls and allows for turning, lifting, directing or transferring from one conveyor line to another. People with lifting or carrying restrictions resulting from back, neck, shoulder, heart, and various repetitive strain injuries may benefit from the use of ball transfer technology if lifting or handling flat products on a repetitive basis within the workplace.



Starting friction of Ball Transfers

The data below obtained by testing the mechanical resistance of four IS-51 ball-up castor type catalog model ball transfers conveying 1000 kg load. To compare and consider various articles; we measured on raw SS steels (mill scale and polished), and hardened (SK steel, hardness HRC60, polished).

As in the chart below, the harder the runway surface is the smoother the article conveyed. For not-hardened steel, black scale applications please contact our sales.

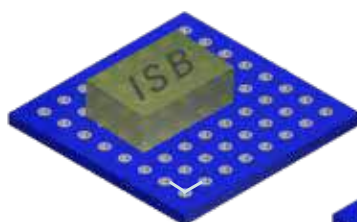
Material	SS Steel		SK Steel HRC60 Polished
	Black Scale	Polished	
Resistance	0.03~0.05	0.02~0.035	0.01~0.015

Resistance= Rolling Resistance÷ Load

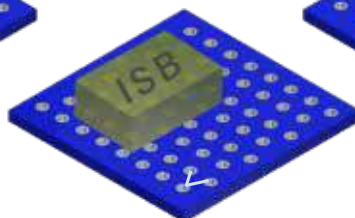
Determining the load for a Ball Transfer unit

ISB ball transfers come in two categories, pressed/molded type for light load, and precision-machined type for heavy loads. When considering ball transfers for an application, the border line for light/heavy loads are approx. 1100lbs. Equal load distribution over many ball transfers is seldom, if ever achieved. Load distribution is governed by the flatness, hardness and smoothness of the load surface in contact with the balls and the ball transfer installation height variance and system deflection. Absolute flatness of the application design is difficult to ensure under field service conditions. To determine the load rating required per units simply divide the ball transfer load capacity by 2 for pressed and molded products and 2/3 for machine-cut products.

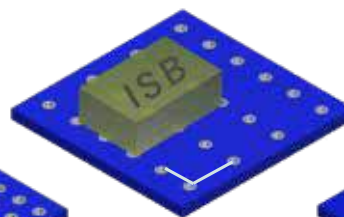
Ball Transfer Layout



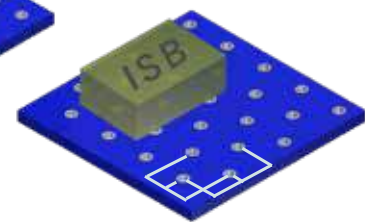
SQUARE PITCH



DIAMOND PITCH



ELONGATED PITCH



ELONGATED DIAGONAL PITCH

IS Type/IS-S Type

- STEEL
- STAINLESS
- UPWARD

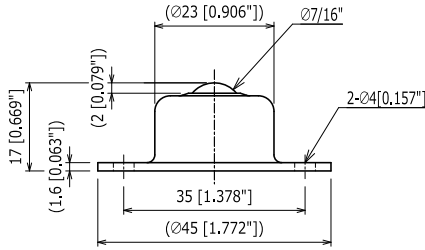
Load Capacity
 40 ~ 1500kgf
 392 ~ 14700N
 88 ~ 3307lbf



Precision-machined ball transfers with exceptional endurance for heavy loads. Available in steel and stainless. Applications include refraction, curves, intersection, rotation and branches of conveyor systems. Designed to transfer heavy materials, changing direction of devices, shearing press, feeding and high damping machines.

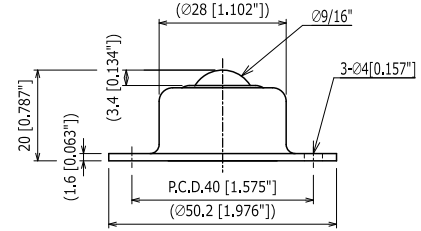
STEEL

IS-10



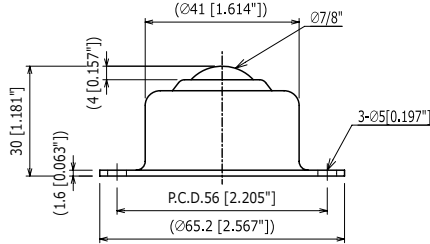
Ball Size	: $\phi 7/16''$ (11.11 mm)	Body	: SCM415
Product Weight	: 0.06 kg/ 0.13 lbs	Main Ball	: SUJ2
Load Capacity	: 40 kgf/ 392 N/ 88 lbf	Small Balls	: SUJ2
		Cap	: SPC

IS-13



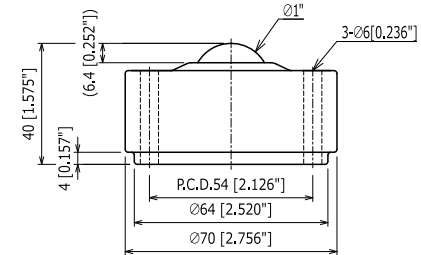
Ball Size	: $\phi 9/16''$ (14.29 mm)	Body	: SCM415
Product Weight	: 0.09 kg/ 0.2 lbs	Main Ball	: SUJ2
Load Capacity	: 50 kgf/ 490 N/ 110 lbf	Small Balls	: SUJ2
		Cap	: SPC

IS-19



Ball Size	: $\phi 7/8''$ (22.23 mm)	Body	: SCM415
Product Weight	: 0.25 kg/ 0.55 lbs	Main Ball	: SUJ2
Load Capacity	: 100 kgf/ 980 N/ 221 lbf	Small Balls	: SUJ2
		Cap	: SPC

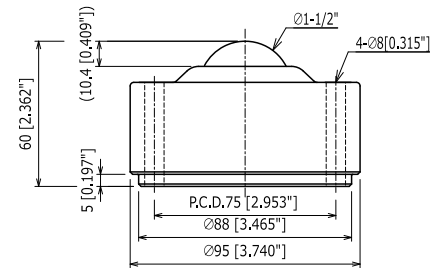
IS-25



With Felt Seal

Ball Size	: $\phi 1''$ (25.4 mm)	Body	: SCM415
Product Weight	: 0.9 kg/ 2 lbs	Main Ball	: SUJ2
Load Capacity	: 150 kgf/ 1470 N/ 331 lbf	Small Balls	: SUJ2
		Cap	: SPC

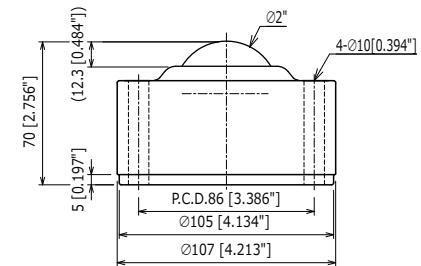
IS-38



With Felt Seal

Ball Size	: $\phi 1-1/2''$ (38.1 mm)	Body	: SCM415
Product Weight	: 2.3 kg/ 5.1 lbs	Main Ball	: SUJ2
Load Capacity	: 250 kgf/ 2450 N/ 551 lbf	Small Balls	: SUJ2
		Cap	: SPC

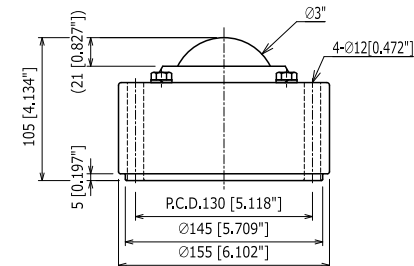
IS-51



With Felt Seal

Ball Size	: $\phi 2''$ (50.8 mm)	Body	: SCM415
Product Weight	: 3.4 kg/ 7.5 lbs	Main Ball	: SUJ2
Load Capacity	: 300 kgf/ 2940 N/ 662 lbf	Small Balls	: SUJ2
		Cap	: S45C

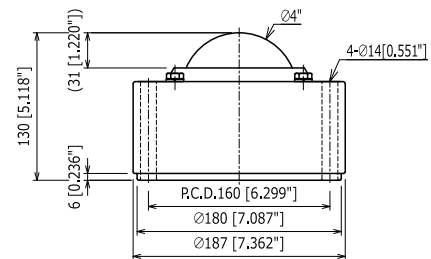
IS-76



With Felt Seal

Ball Size	: $\phi 3''$ (76.2 mm)	Body	: SCM415
Product Weight	: 10.5 kg/ 23 lbs	Main Ball	: SUJ2
Load Capacity	: 450 kgf/ 4410 N/ 992 lbf	Small Balls	: SUJ2
		Cap	: S45C

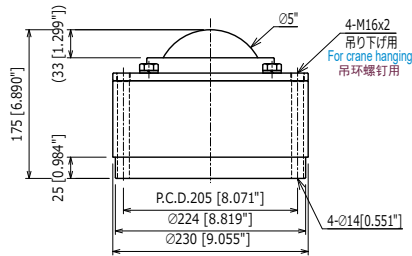
IS-100



With Felt Seal

Ball Size	: $\phi 4''$ (101.6 mm)	Body	: SCM415
Product Weight	: 18.5 kg/ 41 lbs	Main Ball	: SUJ2
Load Capacity	: 1000 kgf/ 9800 N/ 2205 lbf	Small Balls	: SUJ2
		Cap	: S45C

IS-127

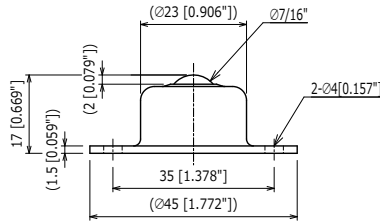


With Felt Seal

Ball Size	: ϕ 5" (127 mm)	Body	: SCM415
Product Weight	: 39.6 kg/ 87 lbs	Main Ball	: SUJ2
Load Capacity	: 1500 kgf/ 14700 N/ 3307 lbf	Small Balls	: SUJ2
		Cap	: S45C

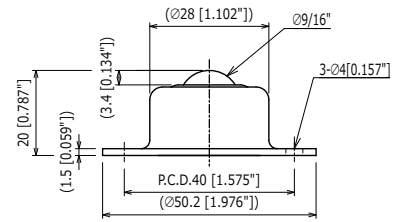
STAINLESS

IS-10S



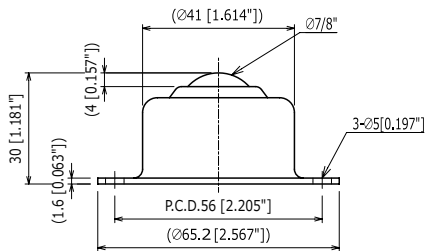
Ball Size	: ϕ 7/16" (11.11 mm)	Body	: SUS420J2
Product Weight	: 0.06 kg/ 0.13 lbs	Main Ball	: SUS440C
Load Capacity	: 40 kgf/ 392 N/ 88 lbf	Small Balls	: SUS440C
		Cap	: SUS304

IS-13S



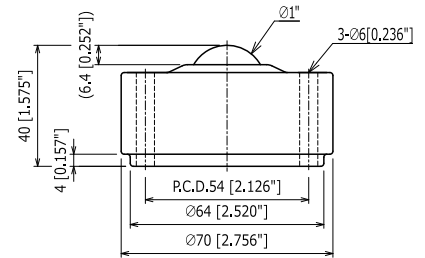
Ball Size	: ϕ 9/16" (14.29 mm)	Body	: SUS420J2
Product Weight	: 0.09 kg/ 0.2 lbs	Main Ball	: SUS440C
Load Capacity	: 50 kgf/ 490 N/ 110 lbf	Small Balls	: SUS440C
		Cap	: SUS304

IS-19S



Ball Size	: ϕ 7/8" (22.23 mm)	Body	: SUS420J2
Product Weight	: 0.25 kg/ 0.55 lbs	Main Ball	: SUS440C
Load Capacity	: 100 kgf/ 980 N/ 221 lbf	Small Balls	: SUS440C
		Cap	: SUS304

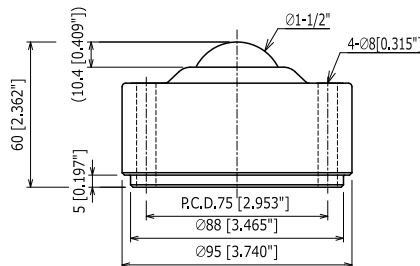
IS-25S



With Felt Seal

Ball Size	: ϕ 1" (25.4 mm)	Body	: SUS420J2
Product Weight	: 0.9 kg/ 2 lbs	Main Ball	: SUS440C
Load Capacity	: 150 kgf/ 1470 N/ 331 lbf	Small Balls	: SUS440C
		Cap	: SUS304

IS-38S



With Felt Seal

Ball Size	: ϕ 1-1/2" (38.1 mm)	Body	: SUS420J2
Product Weight	: 2.3 kg/ 5.1 lbs	Main Ball	: SUS440C
Load Capacity	: 250 kgf/ 2450 N/ 551 lbf	Small Balls	: SUS440C
		Cap	: SUS304

IK Type

STEEL

DOWNWARD

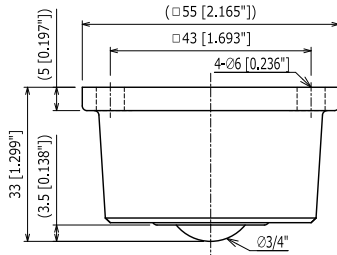
Load Capacity
60 ~ 900kgf
588 ~ 8820N
132 ~ 1985lbf



Mainly used as a castor for trolleys and wagons.
For heavy loads please make sure the article surface is in contact with the ball transfer and has the same hardness.

STEEL

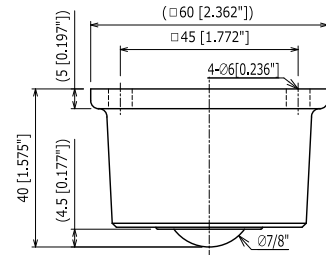
IK-19



With O Ring

Ball Size	: ϕ 3/4" (19.05 mm)	Body	: FC250
Product Weight	: 0.37 kg/ 0.82 lbs	Main Ball	: SUJ2
Load Capacity	: 60 kgf/ 588 N/ 132 lbf	Small Balls	: SUJ2
		Cap	: S45C
		Support Cup	: SCM415

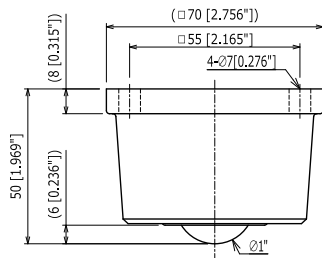
IK-22



With Felt Seal

Ball Size	: ϕ 7/8" (22.23 mm)	Body	: FC250
Product Weight	: 0.5 kg/ 1.1 lbs	Main Ball	: SUJ2
Load Capacity	: 90 kgf/ 882 N/ 198 lbf	Small Balls	: SUJ2
		Cap	: S45C
		Support Cup	: SCM415

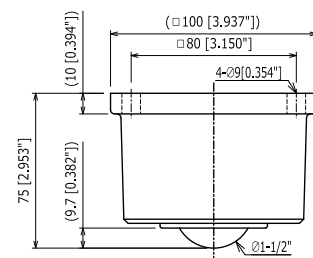
IK-25



With Felt Seal

Ball Size	: ϕ 1" (25.4 mm)	Body	: FC250
Product Weight	: 0.9 kg/ 2 lbs	Main Ball	: SUJ2
Load Capacity	: 120 kgf/ 1180 N/ 265 lbf	Small Balls	: SUJ2
		Cap	: S45C
		Support Cup	: SCM415

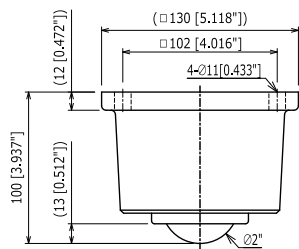
IK-38



With Felt Seal

Ball Size	: ϕ 1-1/2" (38.1 mm)	Body	: FC250
Product Weight	: 2.9 kg/ 6.4 lbs	Main Ball	: SUJ2
Load Capacity	: 250 kgf/ 2450 N/ 551 lbf	Small Balls	: SUJ2
		Cap	: S45C
		Support Cup	: SCM415

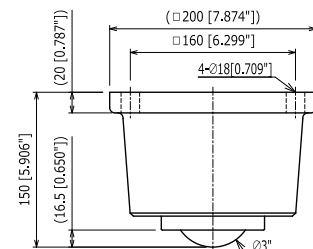
IK-51



With Felt Seal

Ball Size	: ϕ 2" (50.8 mm)	Body	: FC250
Product Weight	: 5.5 kg/ 12 lbs	Main Ball	: SUJ2
Load Capacity	: 350 kgf/ 3430 N/ 772 lbf	Small Balls	: SUJ2
		Cap	: S45C
		Support Cup	: SCM415

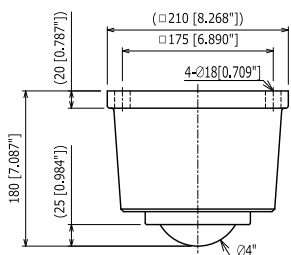
IK-76



With Felt Seal

Ball Size	: ϕ 3" (76.2 mm)	Body	: FC250
Product Weight	: 20 kg/ 44 lbs	Main Ball	: SUJ2
Load Capacity	: 550 kgf/ 5390 N/ 1213 lbf	Small Balls	: SUJ2
		Cap	: S45C
		Support Cup	: SCM415

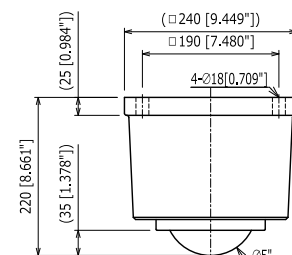
IK-100



With Felt Seal

Ball Size	: ϕ 4" (101.6 mm)	Body	: FC250
Product Weight	: 30kg/ 66 lbs	Main Ball	: SUJ2
Load Capacity	: 700 kgf/ 6860 N/ 1544 lbf	Small Balls	: SUJ2
		Cap	: S45C
		Support Cup	: SCM415

IK-127



With Felt Seal

Ball Size	: ϕ 5" (127 mm)	Body	: FC250
Product Weight	: 50 kg/ 110 lbs	Main Ball	: SUJ2
Load Capacity	: 900 kgf/ 8820 N/ 1985 lbf	Small Balls	: SUJ2
		Cap	: S45C
		Support Cup	: SCM415

IA Type/IA-R Type

ALUMINUM

UPWARD

Load Capacity
 30 ~ 250kgf
 294 ~ 2450N
 66 ~ 551 lbf



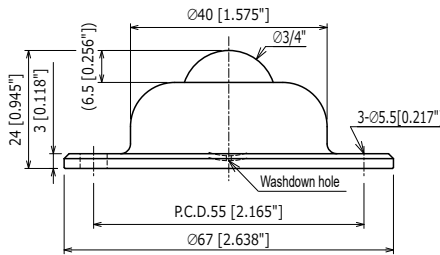
Light-weight aluminum body, stainless steel housing and balls with drain hole. Rust resistant with improved housing for shock loading. Used in applications such as air cargo, ships, trains, air port facilities, places where mass weight is a big concern.

- IA type for light loads
- IA-R for heavy duty, high impact-resistance.

Note: Due to structure of product, use only for ball up application.

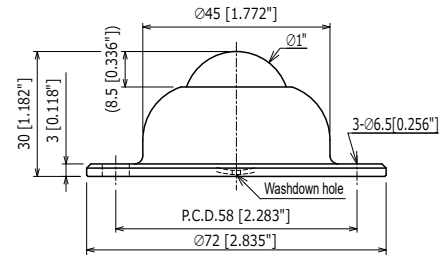
ALUMINUM

IA-19



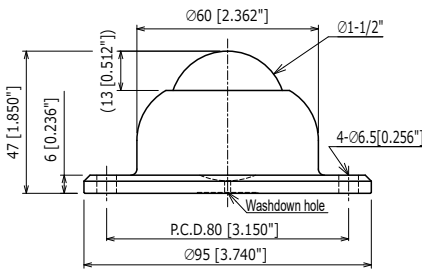
Ball Size	: ϕ 3/4" (19.05 mm)	Body	: AC7A
Product Weight	: 0.09 kg/ 0.2 lbs	Main Ball	: SUS440C
Load Capacity	: 30 kgf/ 294 N/ 66 lbf	Small Balls	: SUS440C
		Support Cup	: SUS420J2

IA-25



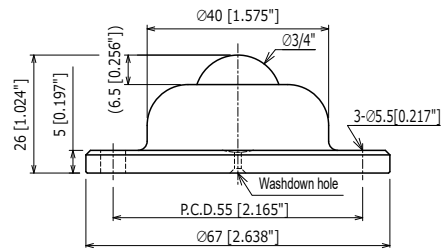
Ball Size	: ϕ 1" (25.4 mm)	Body	: AC7A
Product Weight	: 0.15 kg/ 0.33 lbs	Main Ball	: SUS440C
Load Capacity	: 40 kgf/ 392 N/ 88 lbf	Small Balls	: SUS440C
		Support Cup	: SUS420J2

IA-38



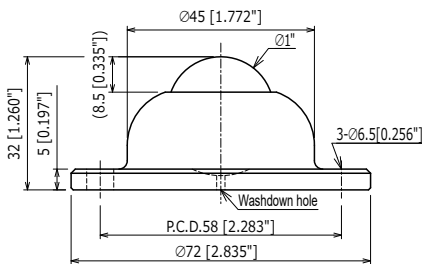
Ball Size	: ϕ 1-1/2" (38.1 mm)	Body	: AC7A
Product Weight	: 0.41 kg/ 0.9 lbs	Main Ball	: SUS440C
Load Capacity	: 50 kgf/ 490 N/ 110 lbf	Small Balls	: SUS440C
		Support Cup	: SUS420J2

IA-19R



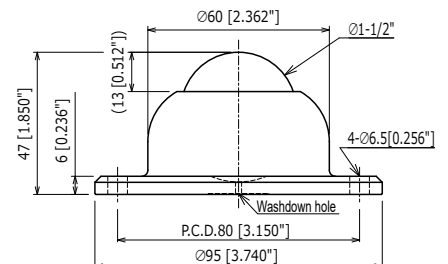
Ball Size	: ϕ 3/4" (19.05 mm)	Body	: AC7A
Product Weight	: 0.15 kg/ 0.33 lbs	Main Ball	: SUS440C
Load Capacity	: 100 kgf/ 980 N/ 221 lbf	Small Balls	: SUS440C
		Support Cup	: SUS420J2

IA-25R



Ball Size	: ϕ 1" (25.4 mm)	Body	: AC7A
Product Weight	: 0.24 kg/ 0.53 lbs	Main Ball	: SUS440C
Load Capacity	: 150 kgf/ 1470 N/ 331 lbf	Small Balls	: SUS440C
		Support Cup	: SUS440C

IA-38R



Ball Size	: ϕ 1-1/2" (38.1 mm)	Body	: AC7A
Product Weight	: 0.52 kg/ 1.1 lbs	Main Ball	: SUS440C
Load Capacity	: 250 kgf/ 2450 N/ 551 lbf	Small Balls	: SUS440C
		Support Cup	: SUS440C

IS-N Type/IS-SN Type/IS-SNM Type

STEEL

STAINLESS

UPWARD

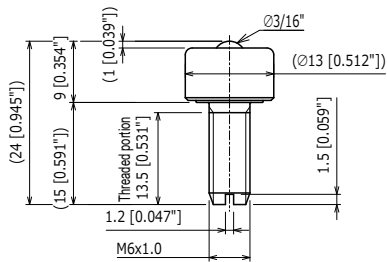
Load Capacity
5 ~ 250kgf
49 ~ 2450N
11 ~ 551lbf



Precision-machined stud mount ball transfer, easy installation with sturdy bolt.

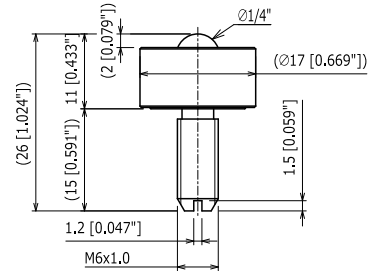
STEEL

IS-05N



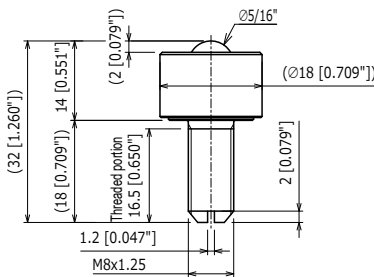
Ball Size	: ϕ 3/16" (4.76 mm)	Body	: SUS420J2
Product Weight	: 0.01 kg/ 0.02 lbs	Main Ball	: SUJ2
Load Capacity	: 10 kgf/ 98 N/ 22 lbf	Small Balls	: SUJ2
		Cap	: S45C

IS-06N



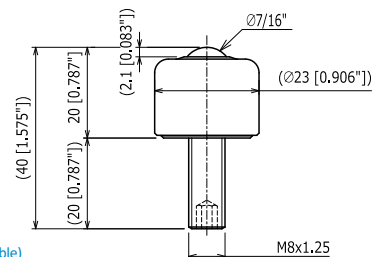
Ball Size	: ϕ 1/4" (6.35 mm)	Body	: SUS420J2
Product Weight	: 0.02 kg/ 0.04 lbs	Main Ball	: SUJ2
Load Capacity	: 20 kgf/ 196 N/ 44 lbf	Small Balls	: SUJ2
		Cap	: S45C

IS-08N



Ball Size	: ϕ 5/16" (7.94 mm)	Body	: SUS420J2
Product Weight	: 0.03 kg/ 0.07 lbs	Main Ball	: SUJ2
Load Capacity	: 30 kgf/ 294 N/ 66 lbf	Small Balls	: SUJ2
		Cap	: SUM

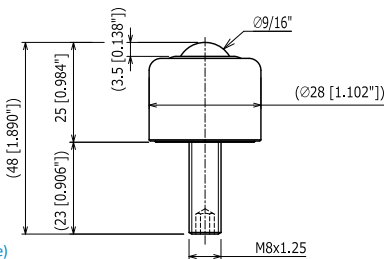
IS-10N



Hexagon socket head screw (Removable)

Ball Size	: ϕ 7/16" (11.11 mm)	Body	: SCM415
Product Weight	: 0.06 kg/ 0.13 lbs	Main Ball	: SUJ2
Load Capacity	: 40 kgf/ 392 N/ 88 lbf	Small Balls	: SUJ2
		Cap	: SPC
		Bolt	: SCM435

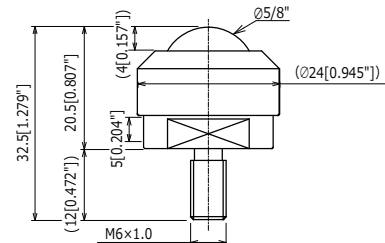
IS-13N



Hexagon socket head screw (Removable)

Ball Size	: ϕ 9/16" (14.29 mm)	Body	: SCM415
Product Weight	: 0.1 kg/ 0.22 lbs	Main Ball	: SUJ2
Load Capacity	: 50 kgf/ 490 N/ 110 lbf	Small Balls	: SUJ2
		Cap	: SPC
		Bolt	: SCM435

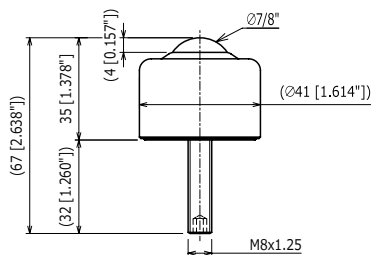
IS-16N



Width : 17 [0.669"]

Ball Size	: ϕ 5/8" (15.88 mm)	Body	: SCM415
Product Weight	: 0.05 kg/ 0.11 lbs	Main Ball	: SUJ2
Load Capacity	: 70 kgf/ 686 N/ 154 lbf	Small Balls	: SUJ2
		Cap	: SUM

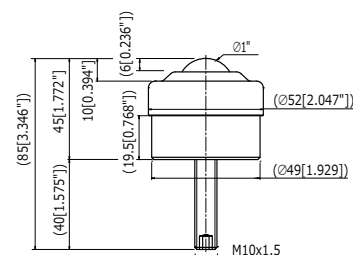
IS-19N



Hexagon socket head screw (Removable)

Ball Size	: ϕ 7/8" (22.23 mm)	Body	: SCM415
Product Weight	: 0.29 kg/ 0.64 lbs	Main Ball	: SUJ2
Load Capacity	: 100 kgf/ 980 N/ 221 lbf	Small Balls	: SUJ2
		Cap	: SPC
		Bolt	: SCM435

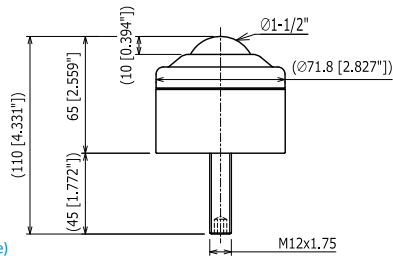
IS-25N



With Felt Seal
Hexagon socket head screw (Removable)

Ball Size	: ϕ 7/8" (22.23 mm)	Body	: SCM415
Product Weight	: 0.29 kg/ 0.64 lbs	Main Ball	: SUJ2
Load Capacity	: 100 kgf/ 980 N/ 221 lbf	Small Balls	: SUJ2
		Cap	: SUS304
		Bolt	: SCM435

IS-38N

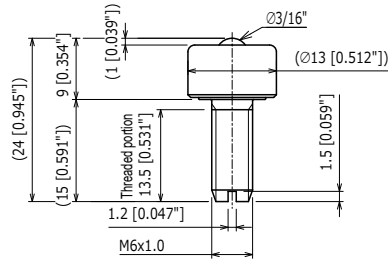


With Felt Seal
Hexagon socket head screw (Removable)

Ball Size	: ϕ 1-1/2" (38.1 mm)	Body	: SCM415
Product Weight	: 1.6 kg/ 3.5 lbs	Main Ball	: SUJ2
Load Capacity	: 250 kgf/ 2450 N/ 551 lbf	Small Balls	: SUJ2
		Cap	: SPC
		Bolt	: SCM435

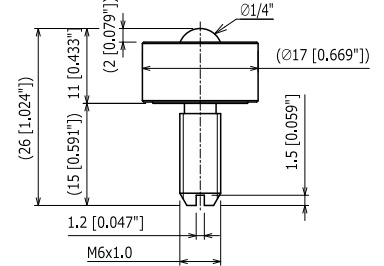
STAINLESS

IS-05SN



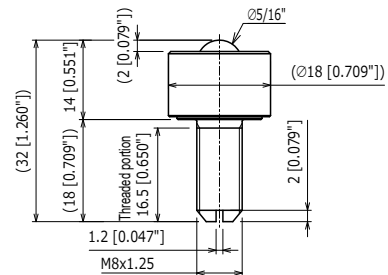
Ball Size	: ϕ 3/16" (4.76 mm)	Body	: SUS420J2
Product Weight	: 0.01 kg/ 0.02 lbs	Main Ball	: SUS440C
Load Capacity	: 10 kgf/ 98 N/ 22 lbf	Small Balls	: SUS440C
		Cap	: SUS304

IS-06SN



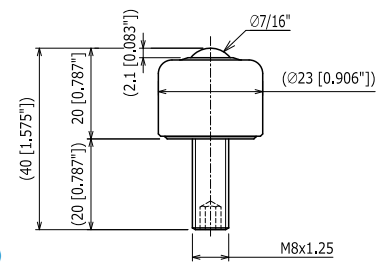
Ball Size	: ϕ 1/4" (6.35 mm)	Body	: SUS420J2
Product Weight	: 0.02 kg/ 0.04 lbs	Main Ball	: SUS440C
Load Capacity	: 20 kgf/ 196 N/ 44 lbf	Small Balls	: SUS440C
		Cap	: SUS303

IS-08SN



Ball Size	: ϕ 5/16" (7.94 mm)	Body	: SUS420J2
Product Weight	: 0.03 kg/ 0.07 lbs	Main Ball	: SUS440C
Load Capacity	: 30 kgf/ 294 N/ 66 lbf	Small Balls	: SUS440C
		Cap	: SUS304

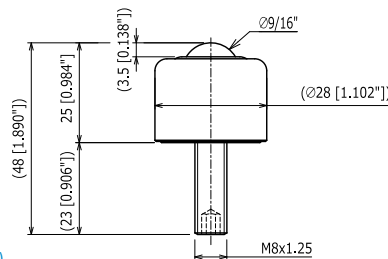
IS-10SN



Hexagon socket head screw (Removable)

Ball Size	: ϕ 7/16" (11.11 mm)	Body	: SUS420J2
Product Weight	: 0.06 kg/ 0.13 lbs	Main Ball	: SUS440C
Load Capacity	: 40 kgf/ 392 N/ 88 lbf	Small Balls	: SUS440C
		Cap	: SUS304
		Bolt	: SUS304

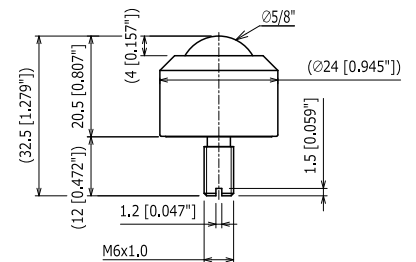
IS-13SN



Hexagon socket head screw (Removable)

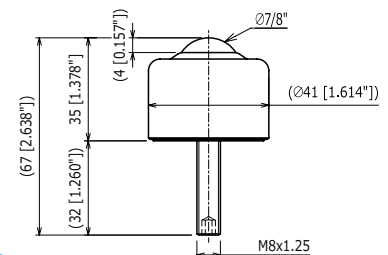
Ball Size	: ϕ 9/16" (14.29 mm)	Body	: SUS420J2
Product Weight	: 0.1 kg/ 0.22 lbs	Main Ball	: SUS440C
Load Capacity	: 50 kgf/ 490 N/ 110 lbf	Small Balls	: SUS440C
		Cap	: SUS304
		Bolt	: SUS304

IS-16SN



Ball Size	: ϕ 5/8" (15.88 mm)	Body	: SUS420J2
Product Weight	: 0.05 kg/ 0.11 lbs	Main Ball	: SUS440C
Load Capacity	: 70 kgf/ 686 N/ 154 lbf	Small Balls	: SUS440C
		Cap	: SUS304

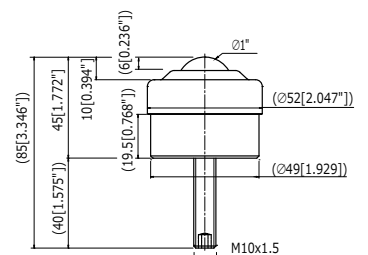
IS-19SN



Hexagon socket head screw (Removable)

Ball Size	: ϕ 7/8" (22.23 mm)	Body	: SUS420J2
Product Weight	: 0.29 kg/ 0.64 lbs	Main Ball	: SUS440C
Load Capacity	: 100 kgf/ 980 N/ 221 lbf	Small Balls	: SUS440C
		Cap	: SUS304
		Bolt	: SUS304

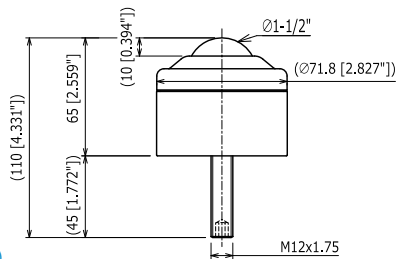
IS-25SN



With Felt Seal
Hexagon socket head screw (Removable)

Ball Size	: ϕ 1" (25.4 mm)	Body	: SUS420J2
Product Weight	: 0.6 kg/ 1.3 lbs	Main Ball	: SUS440C
Load Capacity	: 150 kgf/ 1470 N/ 331 lbf	Small Balls	: SUS440C
		Cap	: SUS304
		Bolt	: SUS304

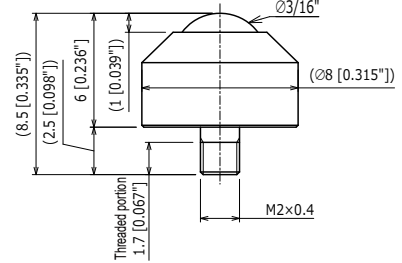
IS-38SN



With Felt Seal
Hexagon socket head screw (Removable)

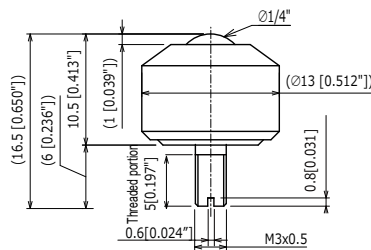
Ball Size	: ϕ 1-1/2" (38.1 mm)	Body	: SUS420J2
Product Weight	: 1.6 kg/ 3.5 lbs	Main Ball	: SUS440C
Load Capacity	: 250 kgf/ 2450 N/ 551 lbf	Small Balls	: SUS440C
		Cap	: SUS304
		Bolt	: SUS304

IS-05SNM



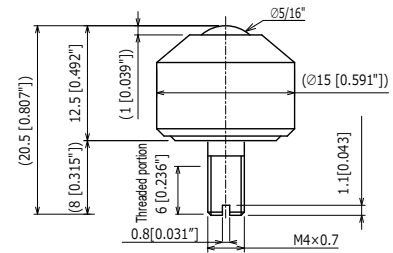
Ball Size	: ϕ 3/16" (4.76 mm)	Body	: SUS420J2
Product Weight	: 0.003 kg/ 0.01 lbs	Main Ball	: SUS440C
Load Capacity	: 5 kgf/ 49 N/ 11 lbf	Small Balls	: SUS440C
		Cap	: A2017

IS-06SNM



Ball Size	: ϕ 1/4" (6.35 mm)	Body	: SUS420J2
Product Weight	: 0.011 kg/ 0.02 lbs	Main Ball	: SUS440C
Load Capacity	: 10 kgf/ 98 N/ 22 lbf	Small Balls	: SUS440C
		Cap	: A5056

IS-08SNM



Ball Size	: ϕ 5/16" (7.94 mm)	Body	: SUS420J2
Product Weight	: 0.021 kg/ 0.05 lbs	Main Ball	: SUS440C
Load Capacity	: 15 kgf/ 147 N/ 33 lbf	Small Balls	: SUS440C
		Cap	: A5056

CP-H Type/CP-D Type/CP-B Type

STEEL

UPWARD

DOWNWARD

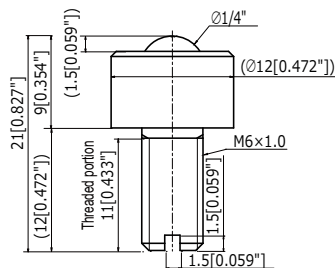
Load Capacity
5 ~ 50kgf
49 ~ 490N
11 ~ 110lbf



A new series of precision-machined studded downward ball transfers, using our expertise to meet various needs; cost efficient and fast delivery.

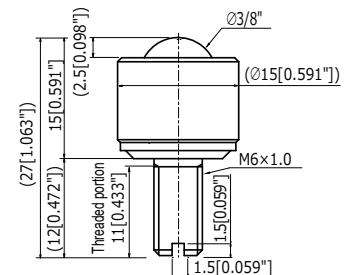
UPWARD

CP-06H



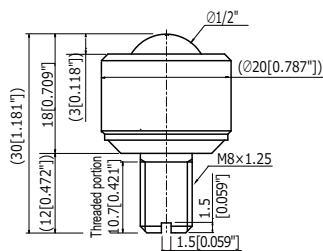
Ball Size	: ϕ 1/4" (6.35 mm)	Body	: SUJ2
Product Weight	: 0.0085 kg/ 0.018 lbs	Main Ball	: SUJ2
Load Capacity	: 5 kgf/ 49 N/ 11 lbf	Small Balls	: SUJ2
		Cap	: SUJ2

CP-09H



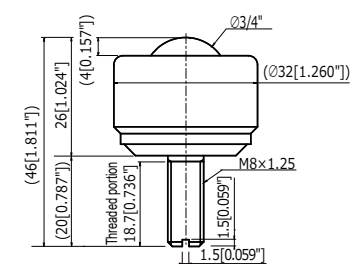
Ball Size	: ϕ 3/8" (9.53 mm)	Body	: SUJ2
Product Weight	: 0.0185kg/ 0.04 lbs	Main Ball	: SUJ2
Load Capacity	: 8 kgf/ 78.45 N/ 17.63 lbf	Small Balls	: SUJ2
		Cap	: SUJ2

CP-13H



Ball Size	: ϕ 1/2" (12.7 mm)	Body	: SUJ2
Product Weight	: 0.0355 kg/ 0.078 lbs	Main Ball	: SUJ2
Load Capacity	: 10 kgf/ 98 N/ 22 lbf	Small Balls	: SUJ2
		Cap	: SUJ2

CP-19H



Ball Size	: ϕ 3/4" (19.05 mm)	Body	: SUJ2
Product Weight	: 0.13 kg/ 0.28 lbs	Main Ball	: SUJ2
Load Capacity	: 50 kgf/ 490 N/ 110 lbf	Small Balls	: SUJ2
		Cap	: SUJ2

IK-N Type/IK-NM Type/IK-SNM Type

STEEL

STAINLESS

DOWNWARD

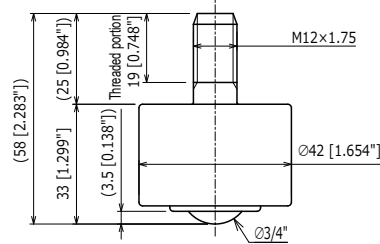
Load Capacity
15 ~ 350kgf
147 ~ 3430N
33 ~ 772lbf



Stud-mount ball transfer with sturdy bolt for only ball down position applications. For heavy load applications please choose a material which has the same hardness as ball transfer load ball. All stainless steel IK-SNM is also available.

STEEL

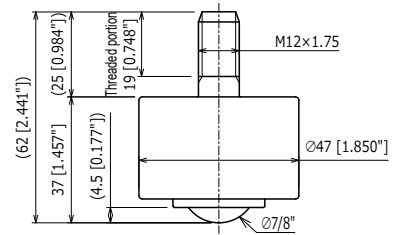
IK-19N



With O Ring

Ball Size	: ϕ 3/4" (19.05 mm)	Body	: S45C
Product Weight	: 0.29 kg/ 0.64 lbs	Main Ball	: SUJ2
Load Capacity	: 60 kgf/ 588 N/ 132 lbf	Small Balls	: SUJ2
		Cap	: S45C
		Support Cup	: SCM415

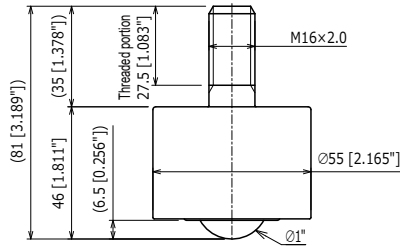
IK-22N



With Felt Seal

Ball Size	: ϕ 7/8" (22.23 mm)	Body	: S45C
Product Weight	: 0.38 kg/ 0.84 lbs	Main Ball	: SUJ2
Load Capacity	: 90 kgf/ 882 N/ 198 lbf	Small Balls	: SUJ2
		Cap	: S45C
		Support Cup	: SCM415

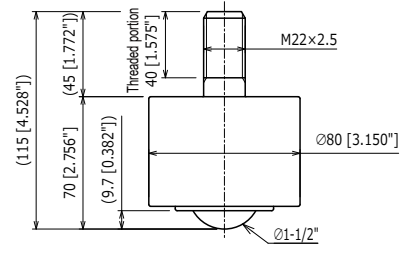
IK-25N



With Felt Seal

Ball Size	: ϕ 1" (25.4 mm)	Body	: S45C
Product Weight	: 0.7 kg/ 1.5 lbs	Main Ball	: SUJ2
Load Capacity	: 120 kgf/ 1180 N/ 265 lbf	Small Balls	: SUJ2
		Cap	: S45C
		Support Cup	: SCM415

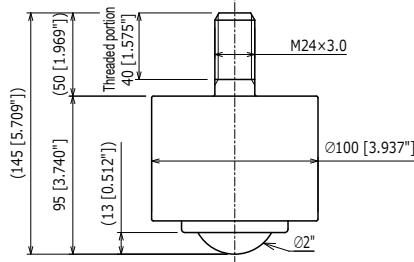
IK-38N



With Felt Seal

Ball Size	: ϕ 1" (25.4 mm)	Body	: S45C
Product Weight	: 0.7 kg/ 1.5 lbs	Main Ball	: SUJ2
Load Capacity	: 120 kgf/ 1180 N/ 265 lbf	Small Balls	: SUJ2
		Cap	: S45C
		Support Cup	: SCM415

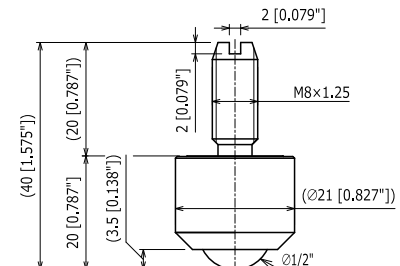
IK-51N



With Felt Seal

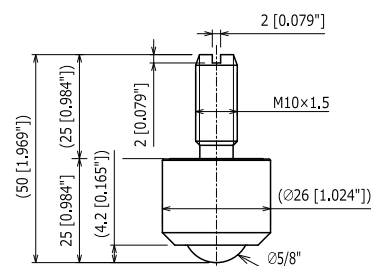
Ball Size	: ϕ 1" (25.4 mm)	Body	: S45C
Product Weight	: 0.7 kg/ 1.5 lbs	Main Ball	: SUJ2
Load Capacity	: 120 kgf/ 1180 N/ 265 lbf	Small Balls	: SUJ2
		Cap	: S45C
		Support Cup	: SCM415

IK-13NM



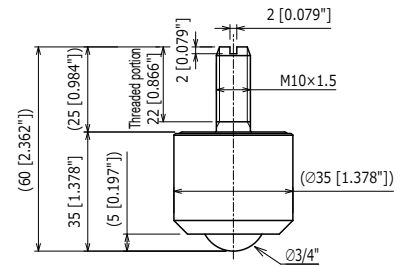
Ball Size	: ϕ 1" (25.4 mm)	Body	: SCM415
Product Weight	: 0.7 kg/ 1.5 lbs	Main Ball	: SUJ2
Load Capacity	: 120 kgf/ 1180 N/ 265 lbf	Small Balls	: SUJ2
		Cap	: S45C

IK-16NM



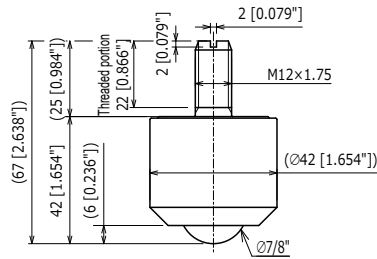
Ball Size	: ϕ 5/8" (15.88 mm)	Body	: SCM415
Product Weight	: 0.15 kg/ 0.33 lbs	Main Ball	: SUJ2
Load Capacity	: 25 kgf/ 245 N/ 55 lbf	Small Balls	: SUJ2
		Cap	: S45C

IK-19NM



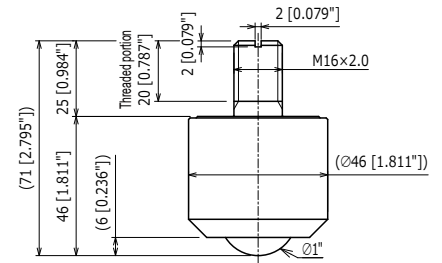
Ball Size	: ϕ 3/4" (19.05 mm)	Body	: S45C
Product Weight	: 0.22 kg/ 0.49 lbs	Main Ball	: SUJ2
Load Capacity	: 60 kgf/ 588 N/ 132 lbf	Small Balls	: SUJ2
		Cap	: S45C
		Support Cup	: SCM415

IK-22NM



Ball Size	: ϕ 7/8" (22.23 mm)	Body	: S45C
Product Weight	: 0.37 kg/ 0.81 lbs	Main Ball	: SUJ2
Load Capacity	: 80 kgf/ 784 N/ 176 lbf	Small Balls	: SUJ2
		Cap	: S45C
		Support Cup	: SCM415

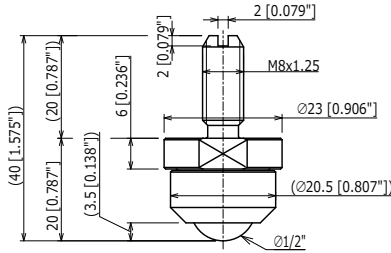
IK-25NM



Ball Size	: ϕ 1" (25.4 mm)	Body	: S45C
Product Weight	: 0.5 kg/ 1.1 lbs	Main Ball	: SUJ2
Load Capacity	: 100 kgf/ 980 N/ 221 lbf	Small Balls	: SUJ2
		Cap	: S45C
		Support Cup	: SCM415

STAINLESS

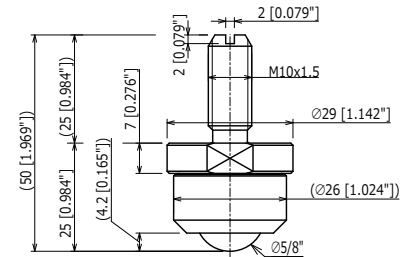
IK-13SNM



Width : 21 [0.827"]

Ball Size	: ϕ 1/2" (12.7 mm)	Body	: SUS440C
Product Weight	: 0.07 kg/ 0.15 lbs	Main Ball	: SUS440C
Load Capacity	: 15 kgf/ 147 N/ 33 lbf	Small Balls	: SUS440C
		Cap	: SUS303

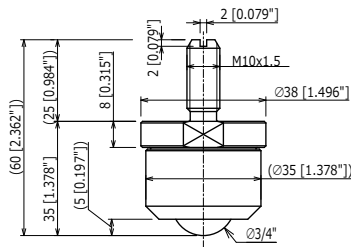
IK-16SNM



Width : 27 [1.063"]

Ball Size	: ϕ 5/8" (15.88 mm)	Body	: SUS440C
Product Weight	: 0.15 kg/ 0.33 lbs	Main Ball	: SUS440C
Load Capacity	: 25 kgf/ 245 N/ 55 lbf	Small Balls	: SUS440C
		Cap	: SUS303

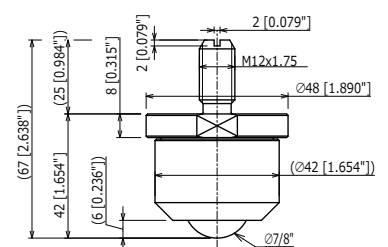
IK-19SNM



Width : 36 [1.417"]
With Felt Seal

Ball Size	: ϕ 3/4" (19.05 mm)	Body	: SUS303
Product Weight	: 0.22 kg/ 0.49 lbs	Main Ball	: SUS440C
Load Capacity	: 60 kgf/ 588 N/ 132 lbf	Small Balls	: SUS440C
		Cap	: SUS303
		Support Cup	: SUS440C

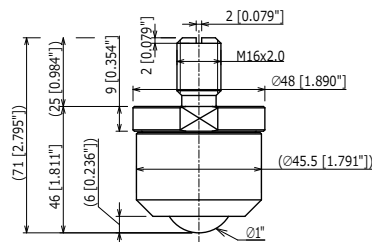
IK-22SNM



Width : 46 [1.811"]
With Felt Seal

Ball Size	: ϕ 7/8" (22.23 mm)	Body	: SUS303
Product Weight	: 0.4 kg/ 0.88 lbs	Main Ball	: SUS440C
Load Capacity	: 80 kgf/ 784 N/ 176 lbf	Small Balls	: SUS440C
		Cap	: SUS303
		Support Cup	: SUS440C

IK-25SNM



Width : 46 [1.811"]
With Felt Seal

Ball Size	: ϕ 1" (25.4 mm)	Body	: SUS303
Product Weight	: 0.5 kg/ 1.1 lbs	Main Ball	: SUS440C
Load Capacity	: 100 kgf/ 980 N/ 221 lbf	Small Balls	: SUS440C
		Cap	: SUS303
		Support Cup	: SUS440C

IS-B Type/IS-BF Type/IS-BM Type

STEEL

UPWARD

Setting pressure power
18 ~ 260kgf
176 ~ 2548N
40 ~ 573lbf

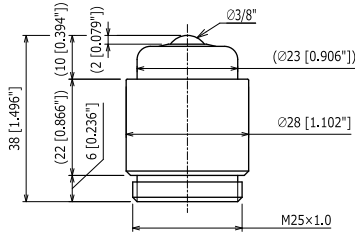


Spring-loaded ball transfers enable self-adjustment for even load distribution. Applications include shearing machines, presses, molding machines, die setting, tool bases, and press brakes, and shock loading applications.
Spring durability over one million times. (Spring can be replaced)

Setting Pressure Power: Weight for spring to begin contraction.
Maximum Setting Pressure: Weight for maximum contraction of spring.

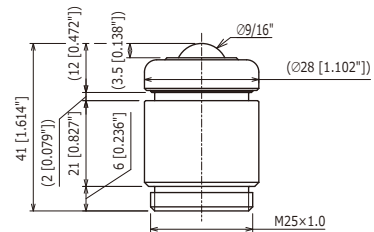
STEEL

IS-10B



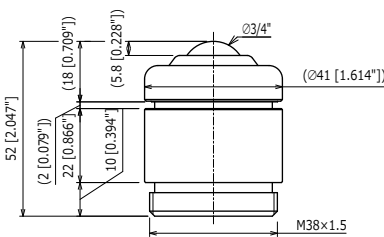
Ball Size	: ϕ 3/8" (9.53 mm)	Body	: SCM415
Product Weight	: 0.12 kg/ 0.26 lbs	Main Ball	: SUJ2
Setting Pressure Power	: 18 kgf/ 176 N/ 40 lbf	Small Balls	: SUJ2
Maximum Pressure Power	: 24 kgf/ 235 N/ 53 lbf	Cap	: SPC
Spring Shrinkage	: 2 mm [0.079"]	Case	: S45C

IS-13B



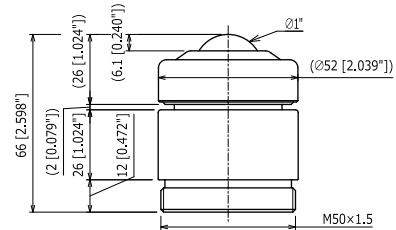
Ball Size	: ϕ 9/16" (14.3 mm)	Body	: SCM415
Product Weight	: 0.14 kg/ 0.31 lbs	Main Ball	: SUJ2
Setting Pressure Power	: 22 kgf/ 216 N/ 49 lbf	Small Balls	: SUJ2
Maximum Pressure Power	: 28 kgf/ 274 N/ 62 lbf	Cap	: SPC
Spring Shrinkage	: 2 mm [0.079"]	Case	: S45C

IS-19B



Ball Size	: ϕ 3/4" (19.05 mm)	Body	: SCM415
Product Weight	: 0.34 kg/ 0.75 lbs	Main Ball	: SUJ2
Setting Pressure Power	: 120 kgf/ 1176 N/ 265 lbf	Small Balls	: SUJ2
Maximum Pressure Power	: 160 kgf/ 1568 N/ 353 lbf	Cap	: SPC
Spring Shrinkage	: 2 mm [0.079"]	Case	: S45C

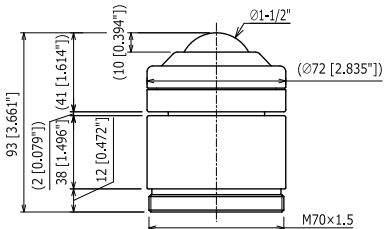
IS-25B



With Felt Seal

Ball Size	: ϕ 1" (25.4 mm)	Body	: SCM415
Product Weight	: 0.8 kg/ 1.8 lbs	Main Ball	: SUJ2
Setting Pressure Power	: 180 kgf/ 1764 N/ 397 lbf	Small Balls	: SUJ2
Maximum Pressure Power	: 223 kgf/ 2185 N/ 492 lbf	Cap	: SPC
Spring Shrinkage	: 2 mm [0.079"]	Case	: S45C

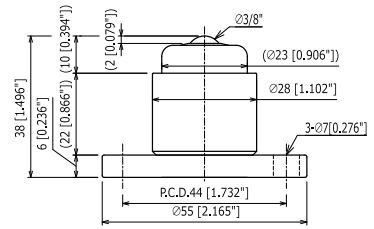
IS-38B



With Felt Seal

Ball Size	: ϕ 1-1/2" (38.1 mm)	Body	: SCM415
Product Weight	: 1.9 kg/ 4.2 lbs	Main Ball	: SUJ2
Setting Pressure Power	: 260 kgf/ 2548 N/ 573 lbf	Small Balls	: SUJ2
Maximum Pressure Power	: 316 kgf/ 3097 N/ 697 lbf	Cap	: S45C
Spring Shrinkage	: 2 mm [0.079"]	Case	: S45C

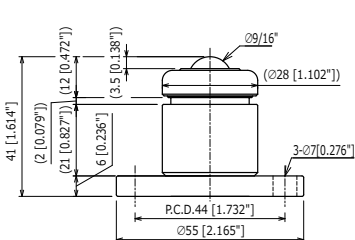
IS-10BF



With Felt Seal

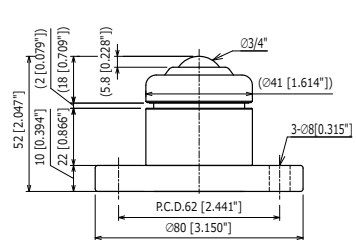
Ball Size	: ϕ 3/8" (9.53 mm)	Body	: SCM415
Product Weight	: 0.19 kg/ 0.42 lbs	Main Ball	: SUJ2
Setting Pressure Power	: 18 kgf/ 176 N/ 40 lbf	Small Balls	: SUJ2
Maximum Pressure Power	: 24 kgf/ 235 N/ 53 lbf	Cap	: SPC
Spring Shrinkage	: 2 mm [0.079"]	Case	: S45C

IS-13BF



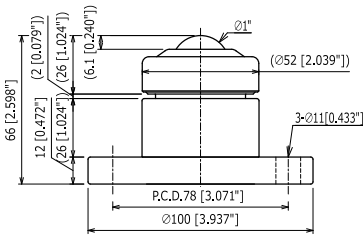
Ball Size	: ϕ 1/2" (12.7 mm)	Body	: SCM415
Product Weight	: 0.22 kg/ 0.49 lbs	Main Ball	: SUJ2
Setting Pressure Power	: 22 kgf/ 216 N/ 49 lbf	Small Balls	: SUJ2
Maximum Pressure Power	: 28 kgf/ 274 N/ 62 lbf	Cap	: S45C
Spring Shrinkage	: 2 mm [0.079"]	Case	: S45C

IS-19BF



Ball Size	: ϕ 3/4" (19.05 mm)	Body	: SCM415
Product Weight	: 0.6 kg/ 1.3 lbs	Main Ball	: SUJ2
Setting Pressure Power	: 120 kgf/ 1176 N/ 265 lbf	Small Balls	: SUJ2
Maximum Pressure Power	: 160 kgf/ 1568 N/ 353 lbf	Cap	: SPC
Spring Shrinkage	: 2 mm [0.079"]	Case	: S45C

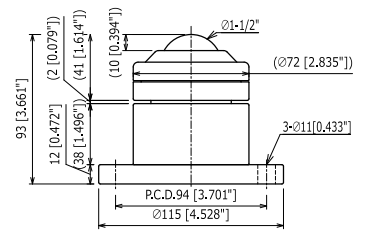
IS-25BF



With Felt Seal

Ball Size	: ϕ 1" (25.4 mm)	Body	: SCM415
Product Weight	: 1.3 kg/ 2.9 lbs	Main Ball	: SUJ2
Setting Pressure Power	: 180 kgf/ 1764 N/ 397 lbf	Small Balls	: SUJ2
Maximum Pressure Power	: 223 kgf/ 2185 N/ 492 lbf	Cap	: SPC
Spring Shrinkage	: 2 mm [0.079"]	Case	: S45C

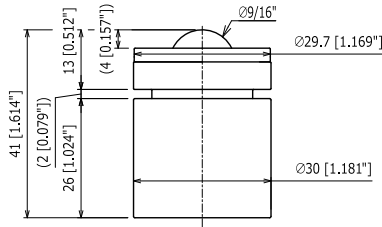
IS-38BF



With Felt Seal

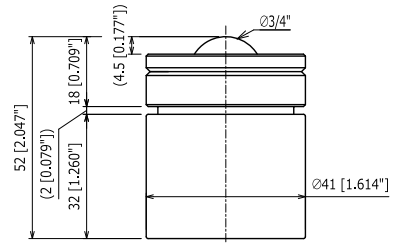
Ball Size	: ϕ 1-1/2" (38.1 mm)	Body	: SCM415
Product Weight	: 2.6 kg/ 5.7 lbs	Main Ball	: SUJ2
Setting Pressure Power	: 260 kgf/ 2548 N/ 573 lbf	Small Balls	: SUJ2
Maximum Pressure Power	: 316 kgf/ 3097 N/ 697 lbf	Cap	: S45C
Spring Shrinkage	: 2 mm [0.079"]	Case	: S45C

IS-14BM



Ball Size	: ϕ 9/16" (14.29 mm)	Body	: SCM415
Product Weight	: 0.26 kg/ 0.57 lbs	Main Ball	: SUJ2
Setting Pressure Power	: 40 kgf/ 392 N/ 88 lbf	Small Balls	: SUJ2
Maximum Pressure Power	: 48 kgf/ 470 N/ 106 lbf	Cap	: S45C
Spring Shrinkage	: 2 mm [0.079"]	Case	: S45C

IS-19BM



Ball Size	: ϕ 3/4" (19.05 mm)	Body	: SCM415
Product Weight	: 0.38 kg/ 0.84 lbs	Main Ball	: SUJ2
Setting Pressure Power	: 100 kgf/ 980 N/ 220 lbf	Small Balls	: SUJ2
Maximum Pressure Power	: 140 kgf/ 1372 N/ 309 lbf	Cap	: S45C
Spring Shrinkage	: 2 mm [0.079"]	Case	: S45C

ISB Ball Transfer

IS-BK Type/IS-BD Type

STEEL

UPWARD

Setting pressure power
20.8 ~ 197kgf
203.9 ~ 1931N
45.9 ~ 434lbf

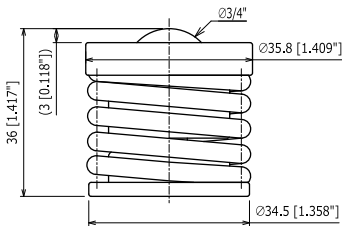


IS-BK/BD spring loaded ball transfers are used for press machine die setting and die removal. With the built-in spring, convey, position, and clamp the die on the press bed by retracting mechanism without replacing the ball transfers from bolster.

Setting Pressure Power: Weight for spring to begin contraction.
Maximum Setting Pressure: Weight for maximum contraction of spring.

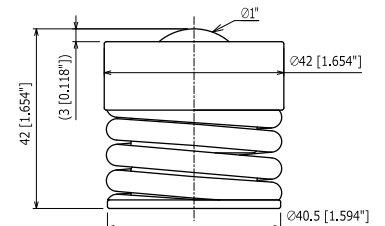
STEEL

IS-19BK-05



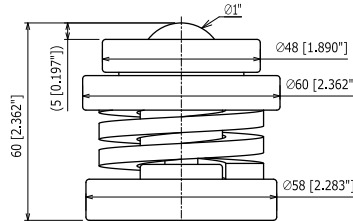
Ball Size	: ϕ 3/4" (19.05 mm)	Body	: SCM415
Product Weight	: 0.17 kg/ 0.37 lbs	Main Ball	: SUJ2
Setting Pressure Power	: 47 kgf/ 461 N/ 104 lbf	Small Balls	: SUJ2
Maximum Pressure Power	: 53 kgf/ 519 N/ 117 lbf	Cap	: S45C
Spring Shrinkage	: 2 mm [0.079"]	Spring	: SWP-B

IS-25BK-08



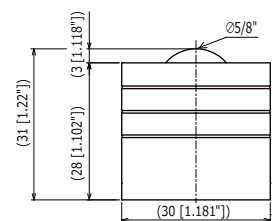
Ball Size	: ϕ 1" (25.4 mm)	Body	: SCM415
Product Weight	: 0.33 kg/ 0.73 lbs	Main Ball	: SUJ2
Setting Pressure Power	: 80 kgf/ 784 N/ 176 lbf	Small Balls	: SUJ2
Maximum Pressure Power	: 110 kgf/ 1078 N/ 243 lbf	Cap	: S45C
Spring Shrinkage	: 2 mm [0.079"]	Spring	: SWP-B

IS-25BK-20



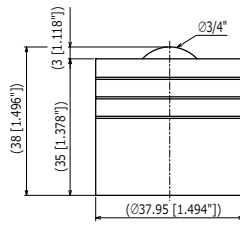
Ball Size	: ϕ 1" (25.4 mm)	Body	: SCM415
Product Weight	: 0.85 kg/ 1.9 lbs	Main Ball	: SUJ2
Setting Pressure Power	: 197 kgf/ 1931 N/ 434 lbf	Small Balls	: SUJ2
Maximum Pressure Power	: 253 kgf/ 2479 N/ 558 lbf	Cap	: S45C
Spring Shrinkage	: 2 mm [0.079"]	Spring	: SWOSC

IS-16BD

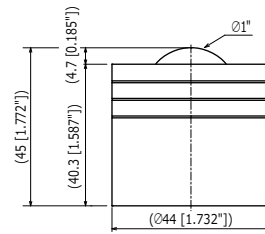


Ball Size	: ϕ 5/8" (15.88 mm)	Body	: SCM415
Product Weight	: 0.118 kg/ 0.26 lbs	Main Ball	: SUJ2
Setting Pressure Power	: 20.8 kgf/ 203.9 N/ 45.9 lbf	Small Balls	: SUJ2
Maximum Pressure Power	: 30.1 kgf/ 295.1 N/ 66.4 lbf	Cap	: S45C
Spring Shrinkage	: 2 mm [0.079"]	Case	: S45C

IS-19BD



IS-25BD



Ball Size	: ϕ 3/4" (19.05 mm)	Body	: SCM415
Product Weight	: 0.229 kg/ 0.51 lbs	Main Ball	: SUJ2
Setting Pressure Power	: 55 kgf/ 539.2 N/ 121.3 lbf	Small Balls	: SUJ2
Maximum Pressure Power	: 76.8 kgf/ 752.9 N/ 169.3 lbf	Cap	: S45C
Spring Shrinkage	: 2 mm [0.079"]	Case	: S45C

Ball Size	: ϕ 1" (25.4 mm)	Body	: SCM415
Product Weight	: 0.354 kg/ 0.78 lbs	Main Ball	: SUJ2
Setting Pressure Power	: 101.5 kgf/ 995.1 N/ 223.8 lbf	Small Balls	: SUJ2
Maximum Pressure Power	: 169 kgf/ 1656.9 N/ 372.6 lbf	Cap	: S45C
Spring Shrinkage	: 2 mm [0.079"]	Case	: S45C

ISB Ball Transfer

IS-D Type

STEEL

UPWARD

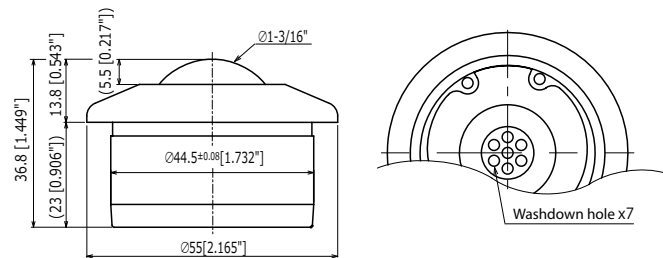
Load Capacity
150kgf
1470. 6N
330. 7lbf



Same quality as IS type with new dirt/wash holes design.
Low profile drop in type for places where height restriction applies.
Easy maintenance can open the cap and overhaul
Product features:
-Drop in type
-low profile
-7 Wash holes
-Easy maintenance

STEEL

IS-30D



Ball Size	: ϕ 1-3/16" (30.16 mm)	Body	: S45C
Product Weight	: 0.36kg/ 0.8 lbs	Main Ball	: SUJ2
Load Capacity	: 150 kgf/ 1470.6 N/ 330.7 lbf	Small Balls	: SUJ2
		Support Cup	: SCM415

ISB Ball Transfer

ND Type

STEEL

UPWARD

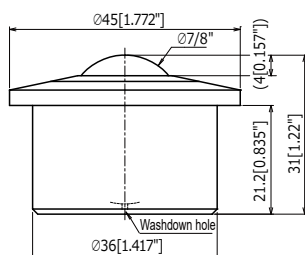
Load Capacity
138 ~ 350kgf
1353 ~ 3432N
304 ~ 772lbf



Press-machined, low-profile drop-in type ball transfer for places with height restriction. Cost-efficient.

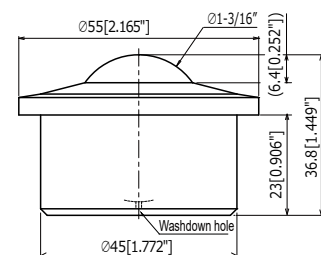
STEEL

ND-138



Ball Size	: ϕ 7/8" (22.23 mm)	Body	: S45C
Product Weight	: 0.21 kg/ 0.46 lbs	Main Ball	: GCr15
Load Capacity	: 138 kgf/ 1353 N/ 304 lbf	Small Balls	: GCr15
		Cap	: S45C

ND-350



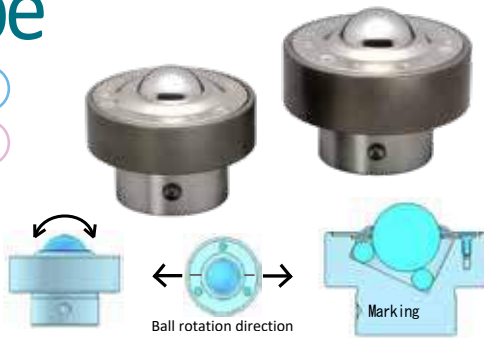
Ball Size	: ϕ 1-3/16" (30.16 mm)	Body	: S45C
Product Weight	: 0.37 kg/ 0.82 lbs	Main Ball	: GCr15
Load Capacity	: 350 kgf/ 3432 N/ 772 lbf	Small Balls	: GCr15
		Cap	: S45C

S Type

STEEL

UPWARD/DOWNWARD

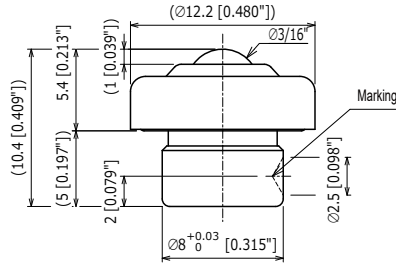
Load Capacity
15 ~ 450kgf
147 ~ 4410N
33 ~ 992lbf



Ball direction controlled, rolls only in forward and backward directions like a roller conveyor, point contact with less friction, use when 360 degrees free movement is not required. Large ball direction can be controlled to a certain extent. Applications such as slides for moving turntables, heavy-duty feeding devices, long strokes for piston movement and truck cargos.

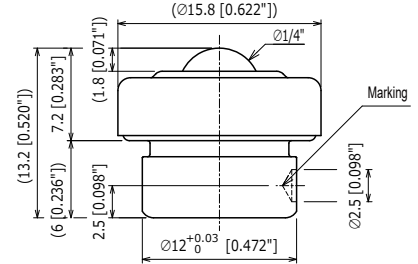
STEEL

+ S-05



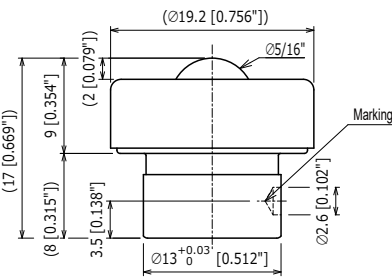
Ball Size	: φ 3/16" (4.76 mm)	Body	: SCM415
Product Weight	: 0.005 kg/ 0.01 lbs	Main Ball	: SUJ2
Load Capacity	: 15 kgf/ 147 N/ 33 lbf	Small Balls	: SUJ2
		Cap	: S45C

+ S-06



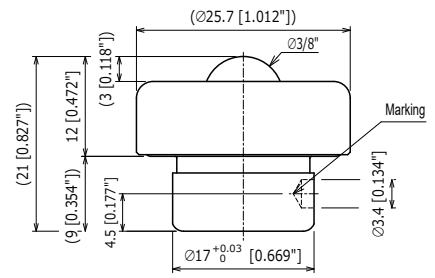
Ball Size	: φ 1/4" (6.35 mm)	Body	: SCM415
Product Weight	: 0.01 kg/ 0.02 lbs	Main Ball	: SUJ2
Load Capacity	: 20 kgf/ 196 N/ 44 lbf	Small Balls	: SUJ2
		Cap	: SUM

+ S-08



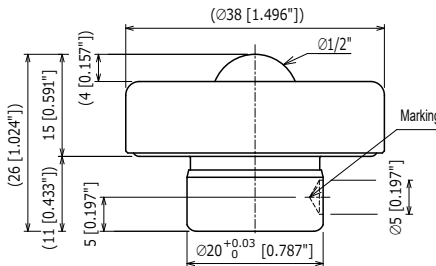
Ball Size	: φ 5/16" (7.94 mm)	Body	: SCM415
Product Weight	: 0.02 kg/ 0.04 lbs	Main Ball	: SUJ2
Load Capacity	: 30 kgf/ 294 N/ 66 lbf	Small Balls	: SUJ2
		Cap	: SPC

+ S-10



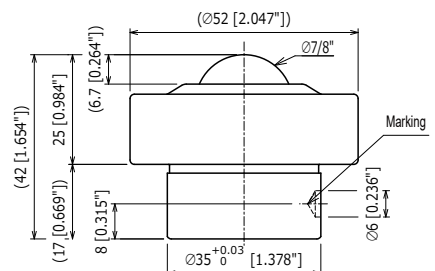
Ball Size	: φ 3/8" (9.53 mm)	Body	: SCM415
Product Weight	: 0.05 kg/ 0.11 lbs	Main Ball	: SUJ2
Load Capacity	: 40 kgf/ 392 N/ 88 lbf	Small Balls	: SUJ2
		Cap	: SPC

+ S-13



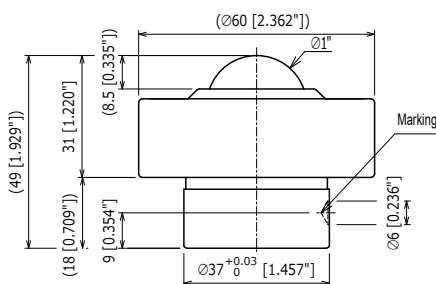
Ball Size	: φ 1/2" (12.7 mm)	Body	: SCM415
Product Weight	: 0.11 kg/ 0.24 lbs	Main Ball	: SUJ2
Load Capacity	: 50 kgf/ 490 N/ 110 lbf	Small Balls	: SUJ2
		Cap	: S45C

+ S-22



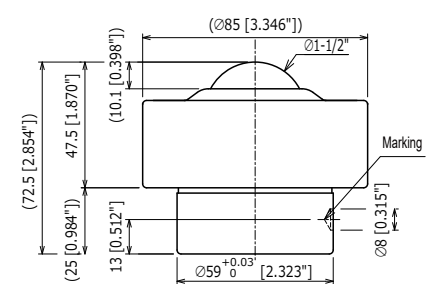
Ball Size	: φ 7/8" (22.23 mm)	Body	: SCM415
Product Weight	: 0.37 kg/ 0.82 lbs	Main Ball	: SUJ2
Load Capacity	: 140 kgf/ 1370 N/ 309 lbf	Small Balls	: SUJ2
		Cap	: SPC

+ S-25



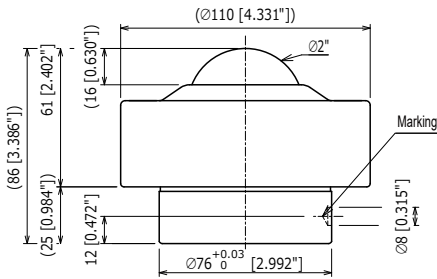
Ball Size	: φ 1" (25.4 mm)	Body	: SCM415
Product Weight	: 0.57 kg/ 1.3 lbs	Main Ball	: SUJ2
Load Capacity	: 160 kgf/ 1570 N/ 353 lbf	Small Balls	: SUJ2
		Cap	: SPC

+ S-38



Ball Size	: φ 1-1/2" (38.1 mm)	Body	: SCM415
Product Weight	: 1.87 kg/ 4.1 lbs	Main Ball	: SUJ2
Load Capacity	: 200 kgf/ 1960 N/ 441 lbf	Small Balls	: SUJ2
		Cap	: SPC

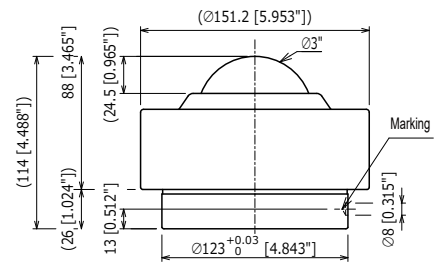
✦ S-51



With Felt Seal

Ball Size	: $\phi 2$ " (50.8 mm)	Body	: SCM415
Product Weight	: 3.6 kg/ 7.9 lbs	Main Ball	: SUJ2
Load Capacity	: 300 kgf/ 2940 N/ 662 lbf	Small Balls	: SUJ2
		Cap	: SPC

✦ S-76



With Felt Seal

Ball Size	: $\phi 3$ " (76.2 mm)	Body	: SCM415
Product Weight	: 9.35 kg/ 21 lbs	Main Ball	: SUJ2
Load Capacity	: 450 kgf/ 4410 N/ 992 lbf	Small Balls	: SUJ2
		Cap	: SPC

ISB Ball Transfer

IM Type/IM-S Type/IM-J Type/IM-SJ Type/IM-R Type

STEEL

STAINLESS

UPWARD

Load Capacity
3 ~ 120kgf
29.4 ~ 1176N
6.6 ~ 264.5lbf

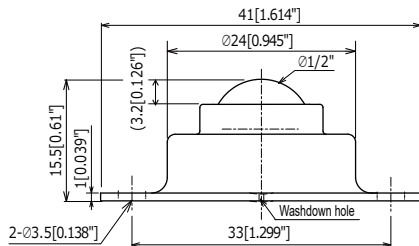


Cost-effective, high-efficiency ball transfers for light-load conveyor systems.

IM series is available in various materials, to suite your specific needs.

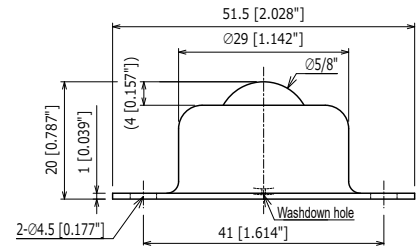
STEEL

✦ IM-12



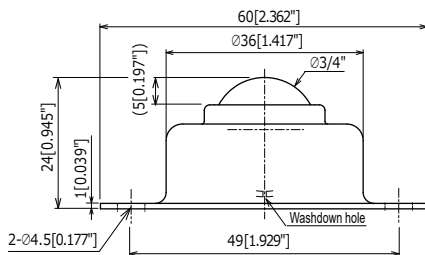
Ball Size	: $\phi 1/2$ " (12.7 mm)	Cap	: SPC
Product Weight	: 0.025 kg/ 0.05 lbs	Main Ball	: S15CK
Load Capacity	: 6 kgf/ 58.8 N/ 13 lbf	Small Balls	: SUJ2
		Body	: SPC

✦ IM-16



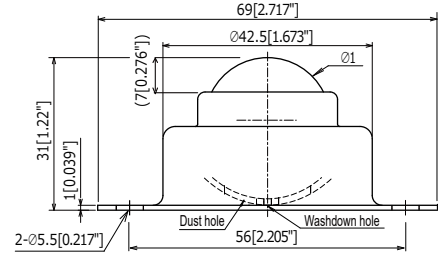
Ball Size	: $\phi 5/8$ " (15.88 mm)	Cap	: SPC
Product Weight	: 0.043 kg/ 0.09 lbs	Main Ball	: S15CK
Load Capacity	: 8 kgf/ 78.4 N/ 18 lbf	Small Balls	: SUJ2
		Body	: SPC

✦ IM-20



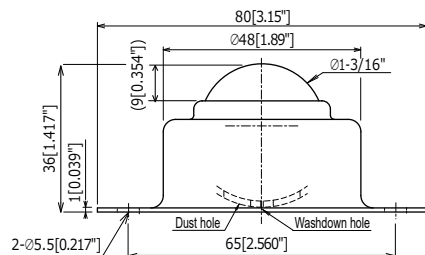
Ball Size	: $\phi 3/4$ " (19.05 mm)	Cap	: SPC
Product Weight	: 0.07 kg/ 0.15 lbs	Main Ball	: S15CK
Load Capacity	: 15 kgf/ 147 N/ 33 lbf	Small Balls	: SUJ2
		Body	: SPC

✦ IM-25



Ball Size	: $\phi 1$ " (25.4 mm)	Cap	: SPC
Product Weight	: 0.145 kg/ 0.32 lbs	Main Ball	: S15CK
Load Capacity	: 30 kgf/ 294 N/ 66 lbf	Small Balls	: SUJ2
		Body	: SPC

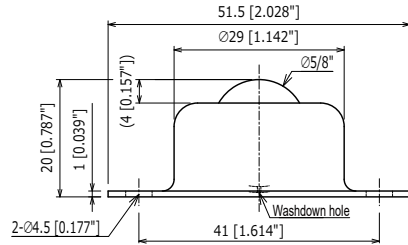
✦ IM-30



Ball Size	: $\phi 1-3/16$ " (30.16 mm)	Cap	: SPC
Product Weight	: 0.23 kg/ 0.50 lbs	Main Ball	: S15CK
Load Capacity	: 40 kgf/ 392 N/ 88 lbf	Small Balls	: SUJ2
		Body	: SPC

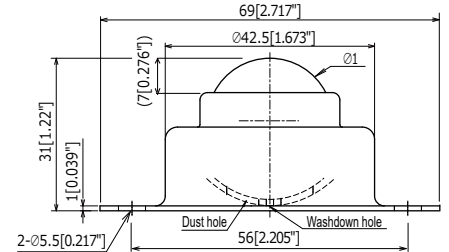
STAINLESS

IM-16S



Ball Size	: ϕ 5/8" (15.88 mm)	Cap	: SUS316
Product Weight	: 0.043 kg/ 0.09 lbs	Main Ball	: SUS440C
Load Capacity	: 8 kgf/ 78.4 N/ 18 lbf	Small Balls	: SUS440C
		Body	: SUS316

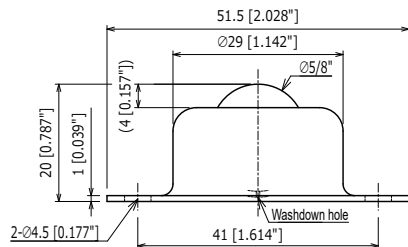
IM-25S



Ball Size	: ϕ 1" (25.4 mm)	Cap	: SUS316
Product Weight	: 0.145 kg/ 0.32 lbs	Main Ball	: SUS440C
Load Capacity	: 30 kgf/ 294 N/ 66 lbf	Small Balls	: SUS440C
		Body	: SUS316

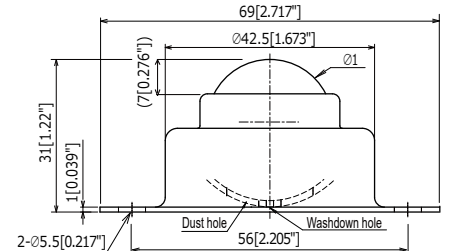
STEEL

IM-16J



Ball Size	: ϕ 5/8" (15.88 mm)	Cap	: SPC
Product Weight	: 0.03 kg/ 0.07 lbs	Main Ball	: POM
Load Capacity	: 3 kgf/ 29.4 N/ 6.6 lbf	Small Balls	: SUJ2
		Body	: SPC

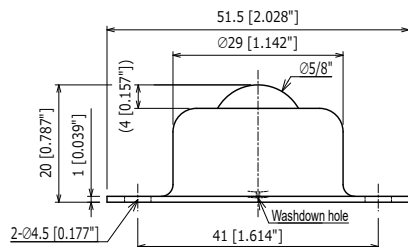
IM-25J



Ball Size	: ϕ 1" (25.4 mm)	Cap	: SPC
Product Weight	: 0.1 kg/ 0.22 lbs	Main Ball	: POM
Load Capacity	: 10 kgf/ 98 N/ 22 lbf	Small Balls	: SUJ2
		Body	: SPC

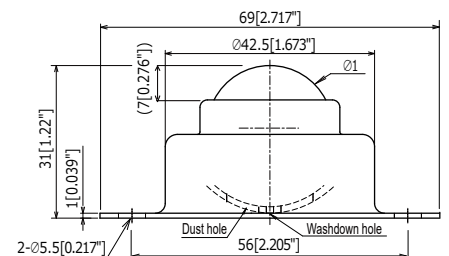
STAINLESS

IM-16SJ



Ball Size	: ϕ 5/8" (15.88 mm)	Cap	: SUS316
Product Weight	: 0.03 kg/ 0.07 lbs	Main Ball	: POM
Load Capacity	: 3 kgf/ 29.4 N/ 6.6 lbf	Small Balls	: SUS440C
		Body	: SUS316

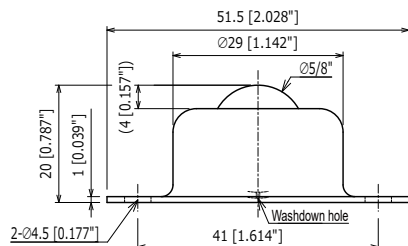
IM-25SJ



Ball Size	: ϕ 1" (25.4 mm)	Cap	: SUS316
Product Weight	: 0.1 kg/ 0.22 lbs	Main Ball	: POM
Load Capacity	: 10 kgf/ 98 N/ 22 lbf	Small Balls	: SUS440C
		Body	: SUS316

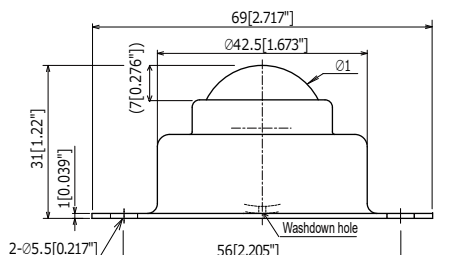
HEAVY LOAD

IM-16R



Ball Size	: ϕ 5/8" (15.88 mm)	Cap	: SPC
Product Weight	: 0.07 kg/ 0.154 lbs	Main Ball	: SUJ2
Load Capacity	: 70 kgf/ 686.4 N/ 154.3 lbf	Small Balls	: SUJ2
		Body	: SCM415

IM-25R



Ball Size	: ϕ 1" (25.4 mm)	Cap	: SPC
Product Weight	: 0.2 kg/ 0.44 lbs	Main Ball	: SUJ2
Load Capacity	: 120 kgf/ 1176 N/ 264.5 lbf	Small Balls	: SUJ2
		Body	: SCM415

IB Type/IB-S Type

- STEEL
- STAINLESS
- UPWARD

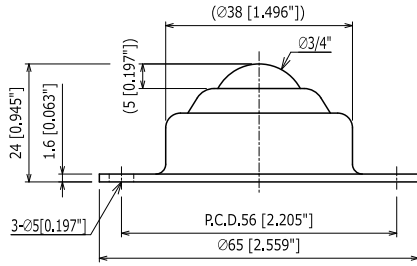
Load Capacity
 20 ~ 30kgf
 196 ~ 294N
 44 ~ 66lbf



Available in steel and stainless for light-loads, used in applications such as logistic truck floors, air cargos, work stations table, load/unload floors, etc.

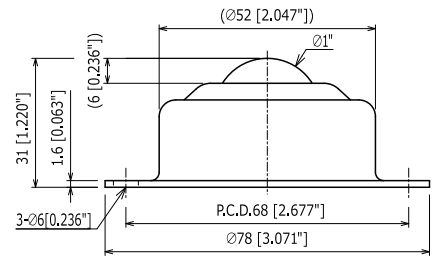
STEEL

IB-19



Ball Size	: ϕ 3/4" (19.05 mm)	Cap	: SPC
Product Weight	: 0.11 kg/ 0.24 lbs	Main Ball	: SUJ2
Load Capacity	: 20 kgf/ 196 N/ 44 lbf	Small Balls	: SUJ2
		Body	: SPC

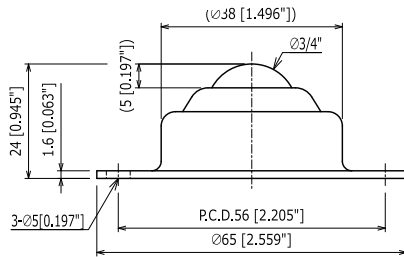
IB-25



Ball Size	: ϕ 1" (25.4 mm)	Cap	: SPC
Product Weight	: 0.25 kg/ 0.55 lbs	Main Ball	: SUJ2
Load Capacity	: 30 kgf/ 294 N/ 66 lbf	Small Balls	: SUJ2
		Body	: SPC

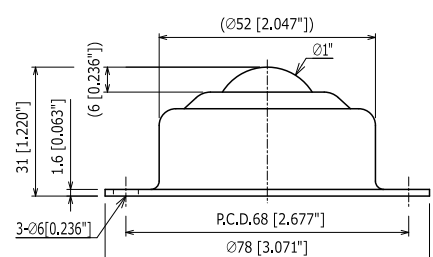
STAINLESS

IB-19S



Ball Size	: ϕ 3/4" (19.05 mm)	Cap	: SUS304
Product Weight	: 0.11 kg/ 0.24 lbs	Main Ball	: SUS440C
Load Capacity	: 20 kgf/ 196 N/ 44 lbf	Small Balls	: SUS440C
		Body	: SUS304

IB-25S



Ball Size	: ϕ 1" (25.4 mm)	Cap	: SUS304
Product Weight	: 0.25 kg/ 0.55 lbs	Main Ball	: SUS440C
Load Capacity	: 30 kgf/ 294 N/ 66 lbf	Small Balls	: SUS440C
		Body	: SUS304

US Type/US-S Type/US-J Type/US-SJ Type

STEEL

STAINLESS

UPWARD

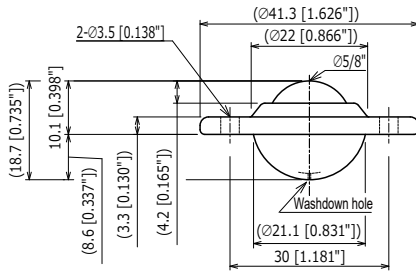
Load Capacity
 3 ~ 30kgf
 29.4 ~ 294N
 6.6 ~ 66lbf



Cost effective, low profile, flange type, flying saucer type ball transfers. It has two mounting holes for easy installation, and can be recessed into the working surface to facilitate smooth, multi-directional motion, has the added advantage of providing easy load/unloading duties to drivers at logistic work stations.

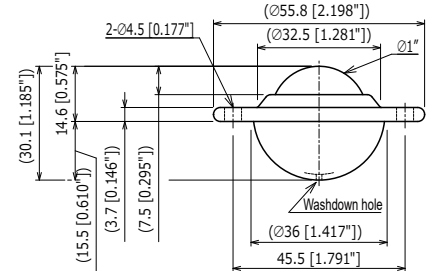
STEEL

US-16



Ball Size	: ϕ 5/8" (15.88 mm)	Cap	: SPC
Product Weight	: 0.045 kg/ 0.1 lbs	Main Ball	: S15CK
Load Capacity	: 8 kgf/ 78.4 N/ 18 lbf	Small Balls	: SUJ2
		Body	: SPC

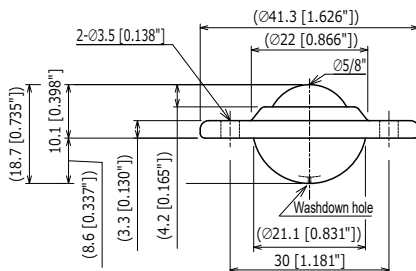
US-25



Ball Size	: ϕ 1" (25.4 mm)	Cap	: SPC
Product Weight	: 0.135 kg/ 0.3 lbs	Main Ball	: S15CK
Load Capacity	: 30 kgf/ 294 N/ 66 lbf	Small Balls	: SUJ2
		Body	: SPC

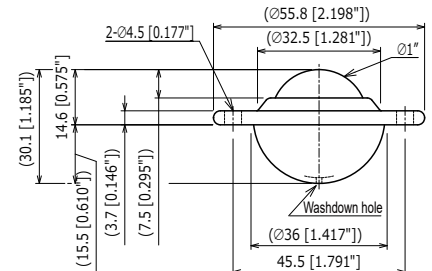
STAINLESS

US-16S



Ball Size	: ϕ 5/8" (15.88 mm)	Cap	: SUS316
Product Weight	: 0.045 kg/ 0.1 lbs	Main Ball	: SUS440C
Load Capacity	: 8 kgf/ 78.4 N/ 18 lbf	Small Balls	: SUS440C
		Body	: SUS316

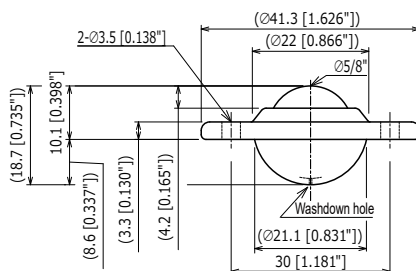
US-25S



Ball Size	: ϕ 1" (25.4 mm)	Cap	: SUS316
Product Weight	: 0.135 kg/ 0.3 lbs	Main Ball	: SUS440C
Load Capacity	: 30 kgf/ 294 N/ 66 lbf	Small Balls	: SUS440C
		Body	: SUS316

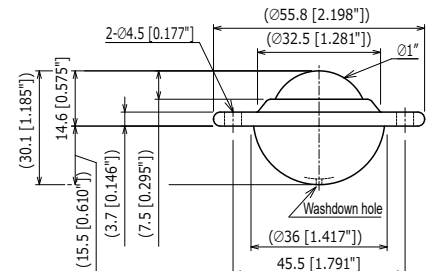
STEEL

US-16J



Ball Size	: ϕ 5/8" (15.88 mm)	Cap	: SPC
Product Weight	: 0.03 kg/ 0.07 lbs	Main Ball	: POM
Load Capacity	: 3 kgf/ 29.4 N/ 6.6 lbf	Small Balls	: SUJ2
		Body	: SPC

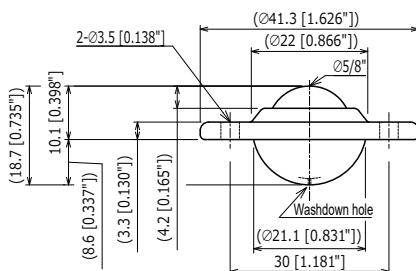
US-25J



Ball Size	: ϕ 1" (25.4 mm)	Cap	: SPC
Product Weight	: 0.08 kg/ 0.18 lbs	Main Ball	: POM
Load Capacity	: 10 kgf/ 98 N/ 22 lbf	Small Balls	: SUJ2
		Body	: SPC

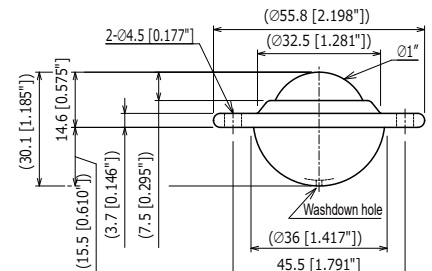
STAINLESS

US-16SJ



Ball Size	: ϕ 5/8" (15.88 mm)	Cap	: SUS316
Product Weight	: 0.03 kg/ 0.07 lbs	Main Ball	: POM
Load Capacity	: 3 kgf/ 29.4 N/ 6.6 lbf	Small Balls	: SUS440C
		Body	: SUS316

US-25SJ



Ball Size	: ϕ 1" (25.4 mm)	Cap	: SUS316
Product Weight	: 0.08 kg/ 0.18 lbs	Main Ball	: POM
Load Capacity	: 10 kgf/ 98 N/ 22 lbf	Small Balls	: SUS440C
		Body	: SUS316

UM-B Type/UM-BJ Type

- STEEL
- UPWARD

Setting pressure power
 1 ~ 8kgf
 9.8 ~ 78.4N
 2.2 ~ 17.6lbf

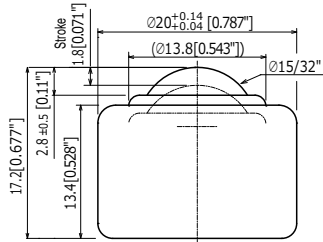


Stamping type low cost with fast lead time.
 Self leveling spring-loaded to avoid excessive load on individual ball transfer. Regardless of article bottom shape can support and distribute load on all ball transfers. Drop in type easy to install

Setting Pressure Power: Weight for spring to begin contraction.
 Maximum Setting Pressure: Weight for maximum contraction of spring.

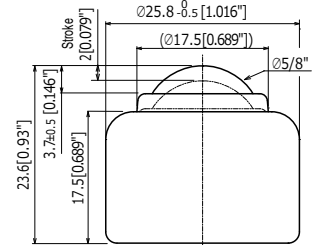
STEEL

UM-12B



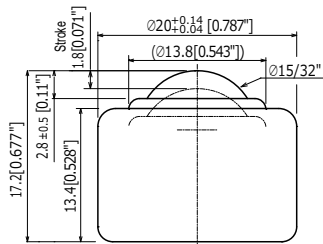
Ball Size	: $\varnothing 15/32$ " (11.9 mm)	Case	: SPCE
Product Weight	: 0.02 kg/ 0.04 lbs	Main Ball	: POM
Setting Pressure Power	: 5 kgf/ 49N/ 11 lbf	Small Balls	: SUJ2
Maximum Pressure Power	: 7 kgf/ 68.6 N/ 15.4 lbf	Cap	: SPCE
Spring Shrinkage	: 1.8 mm [0.070"]	Body	: SPCE

UM-16B



Ball Size	: $\varnothing 5/8$ " (15.88 mm)	Case	: SPCE
Product Weight	: 0.04 kg/ 0.09 lbs	Main Ball	: POM
Setting Pressure Power	: 8 kgf/ 78.4N/ 17.6 lbf	Small Balls	: SUJ2
Maximum Pressure Power	: 11 kgf/ 107.8 N/ 24.3 lbf	Cap	: SPCE
Spring Shrinkage	: 2 mm [0.079"]	Body	: SPCE

UM-12BJ



Ball Size	: $\varnothing 15/32$ " (11.9 mm)	Case	: SPCE
Product Weight	: 0.015 kg/ 0.03 lbs	Main Ball	: POM
Setting Pressure Power	: 1 kgf/ 9.8N/ 2.2 lbf	Small Balls	: SUJ2
Maximum Pressure Power	: 1.5 kgf/ 14.7 N/ 3.3 lbf	Cap	: SPCE
Spring Shrinkage	: 1.8 mm [0.070"]	Body	: SPCE

IJH Type/IJP Type

ABS RESIN

UPWARD

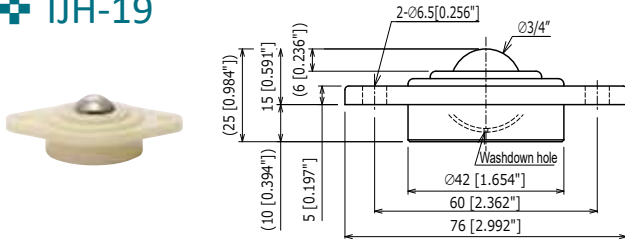
Load Capacity
20 ~ 50kgf
196 ~ 490N
44 ~ 110lbf



Made of ABS plastic, low-weight with less friction, used in food factories production lines and hygienic applications. Large ball options: stainless steel and plastic ball are available upon request. This product is only for ball up position applications. See IP products for all plastic Type.

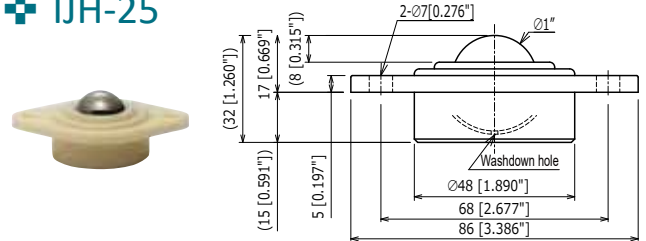
RESIN

+ IJH-19



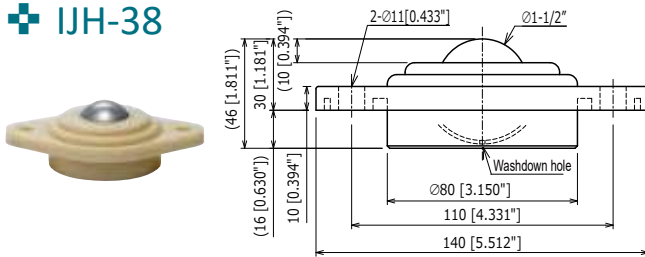
Ball Size	: ϕ 3/4" (19.05 mm)	Body	: ABS plastic
Product Weight	: 0.06 kg/ 0.13 lbs	Main Ball	: SUJ2
Load Capacity	: 20 kgf/ 196 N/ 44 lbf	Small Balls	: SUJ2
		Support Cup	: SUS420J2

+ IJH-25



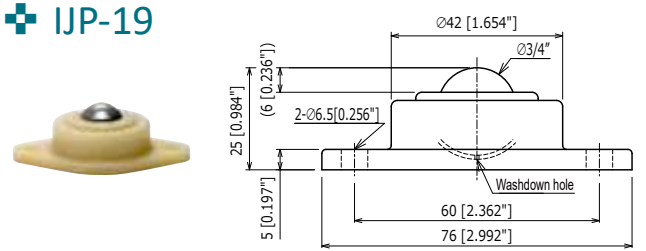
Ball Size	: ϕ 1" (25.4 mm)	Body	: ABS plastic
Product Weight	: 0.12 kg/ 0.26 lbs	Main Ball	: SUJ2
Load Capacity	: 30 kgf/ 294 N/ 66 lbf	Small Balls	: SUJ2
		Support Cup	: SUS420J2

+ IJH-38



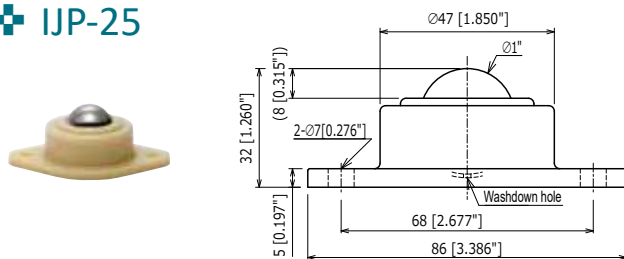
Ball Size	: ϕ 1-1/2" (38.1 mm)	Body	: ABS plastic
Product Weight	: 0.41 kg/ 0.9 lbs	Main Ball	: SUJ2
Load Capacity	: 50 kgf/ 490 N/ 110 lbf	Small Balls	: SUJ2
		Support Cup	: SUS420J2

+ IJP-19



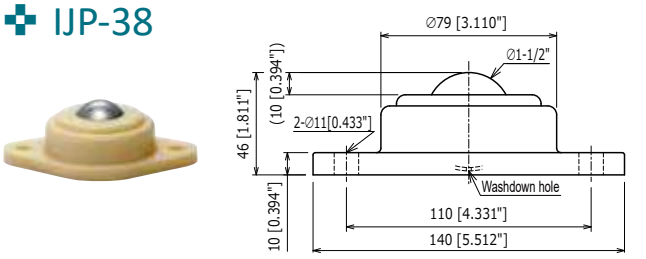
Ball Size	: ϕ 3/4" (19.05 mm)	Body	: ABS plastic
Product Weight	: 0.06 kg/ 0.13 lbs	Main Ball	: SUJ2
Load Capacity	: 20 kgf/ 196 N/ 44 lbf	Small Balls	: SUJ2
		Support Cup	: SUS420J2

+ IJP-25



Ball Size	: ϕ 1" (25.4 mm)	Body	: ABS plastic
Product Weight	: 0.12 kg/ 0.26 lbs	Main Ball	: SUJ2
Load Capacity	: 30 kgf/ 294 N/ 66 lbf	Small Balls	: SUJ2
		Support Cup	: SUS420J2

+ IJP-38



Ball Size	: ϕ 1-1/2" (38.1 mm)	Body	: ABS plastic
Product Weight	: 0.4 kg/ 0.88 lbs	Main Ball	: SUJ2
Load Capacity	: 50 kgf/ 490 N/ 110 lbf	Small Balls	: SUJ2
		Support Cup	: SUS420J2

IP Type/IP-N Type

ALL PLASTIC

UPWARD

Load Capacity
3 · 10kgf
29. 4 · 98N
6. 6 · 22lbf

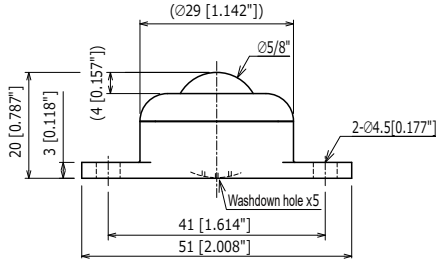


All made of POM Acetyl plastic, for strictly clean, hygienic, wet environments such as food conveyer lines, medical, Flat Panel Display (FPD), photovoltaic (PV) production lines, etc. Drain hole at the bottom. Degreasing cleanings is available upon request please contact our sales.

※ Recommended tightening torque is less than 0.8N·m.

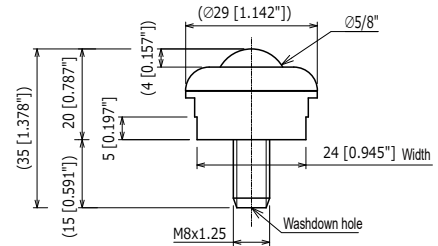
RESIN

IP-16W



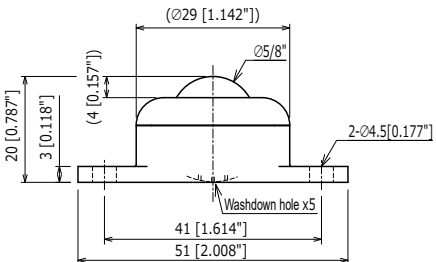
Ball Size	: $\phi 5/8''$ (15.88 mm)	Body	: POM
Product Weight	: 0.01 kg/ 0.02 lbs	Main Ball	: POM
Load Capacity	: 3 kgf/ 29.4 N/ 6.6 lbf	Small Balls	: POM
		Cap	: POM

IP-16NW



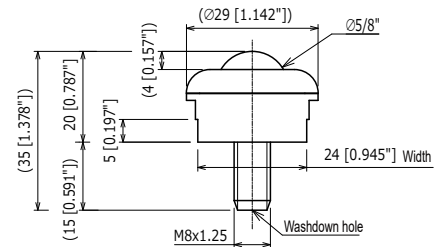
Ball Size	: $\phi 5/8''$ (15.88 mm)	Body	: POM
Product Weight	: 0.01 kg/ 0.02 lbs	Main Ball	: POM
Load Capacity	: 3 kgf/ 29.4 N/ 6.6 lbf	Small Balls	: POM
		Cap	: POM

IP-16B



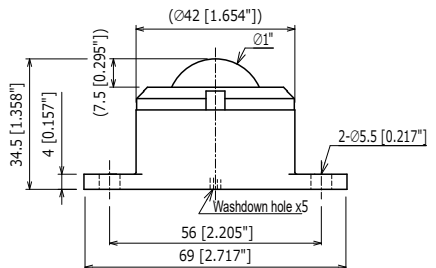
Ball Size	: $\phi 5/8''$ (15.88 mm)	Body	: POM
Product Weight	: 0.01 kg/ 0.02 lbs	Main Ball	: ESD UHMWPE
Load Capacity	: 3 kgf/ 29.4 N/ 6.6 lbf	Small Balls	: POM
		Cap	: POM

IP-16NB



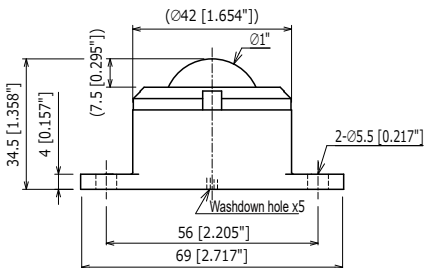
Ball Size	: $\phi 5/8''$ (15.88 mm)	Body	: POM
Product Weight	: 0.01 kg/ 0.02 lbs	Main Ball	: ESD UHMWPE
Load Capacity	: 3 kgf/ 29.4 N/ 6.6 lbf	Small Balls	: POM
		Cap	: POM

IP-25W



Ball Size	: $\phi 1''$ (25.4 mm)	Body	: POM
Product Weight	: 0.03 kg/ 0.07 lbs	Main Ball	: POM
Load Capacity	: 10 kgf/ 98 N/ 22 lbf	Small Balls	: POM
		Cap	: POM

IP-25B



Ball Size	: $\phi 1''$ (25.4 mm)	Body	: POM
Product Weight	: 0.03 kg/ 0.07 lbs	Main Ball	: ESD UHMWPE
Load Capacity	: 10 kgf/ 98 N/ 22 lbf	Small Balls	: POM
		Cap	: POM

IPK Type

ALL PLASTIC

DOWNWARD

Load Capacity
7kgf
68. 6N
15. 4lbf



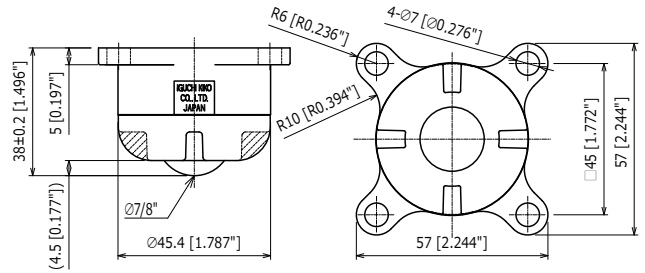
All plastic, low cost ball transfer, castor like, only for ball down position applications. Used in medical, food factories production lines and places where steel use is restricted. Degreasing cleaning is also available upon request please contact our sales.

RESIN

+ IPK-22

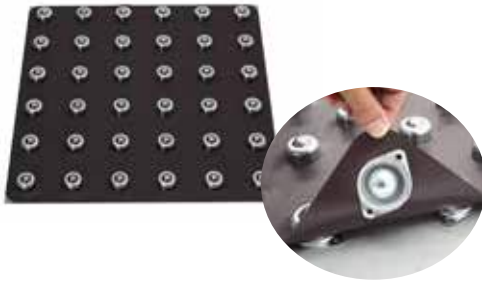


Ball Size	: ϕ 7/8" (22.23 mm)	Body	: POM
Product Weight	: 0.05kg/ 0.11 lbs	Main Ball	: POM
Load Capacity	: 7 kgf/ 68.6 N/ 15.4 lbf	Small Balls	: POM
		Cap	: POM
		Support Cup	: POM
		Internal Cap	: POM
		Seal	: PBT



MS Type (Magnetic Sheet for Quick Installation)

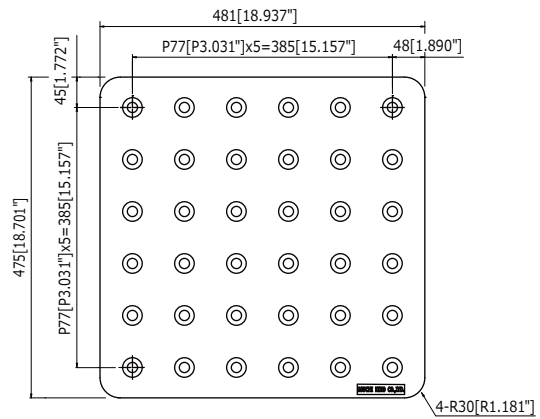
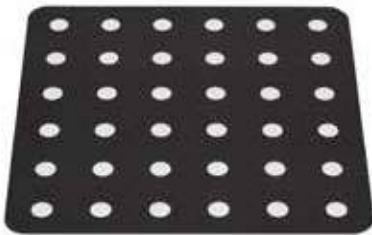
Magnetic Sheet
UPWARD



Magnetic sheet for installation in IM series ball transfers. Reduces costs and time incurred by traditional installation methods, and increases speed and ease of maintenance. Can customize size, shape, and installation pitch. Option of steel plates for installation of magnetic sheets also available.

Magnetic Sheet

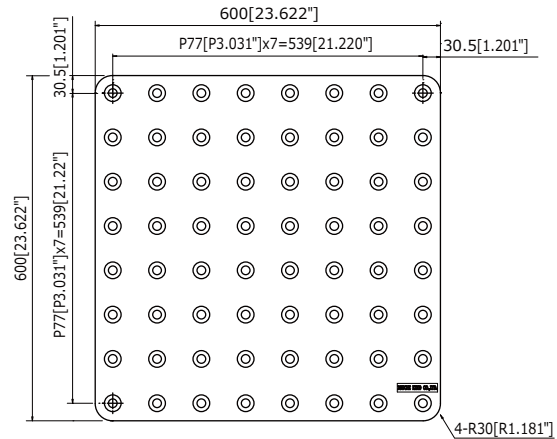
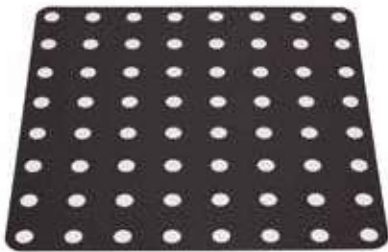
MS-481×475-16



IM-16 in use

Product Weight	: 1.7 kg/ 3.747 lbs	Sheet Thickness	: t0.8
Load Capacity	: (Ref: IM-16 Series)	Max no. ball transfers	: 36

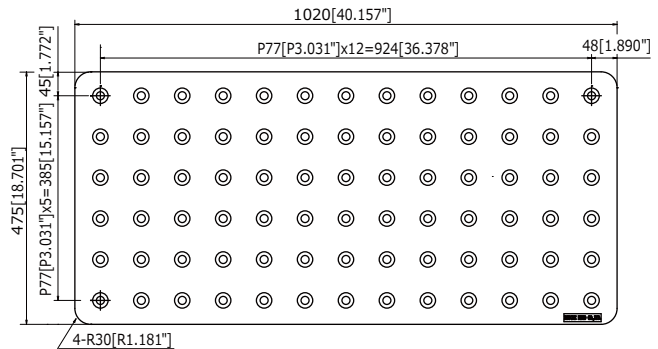
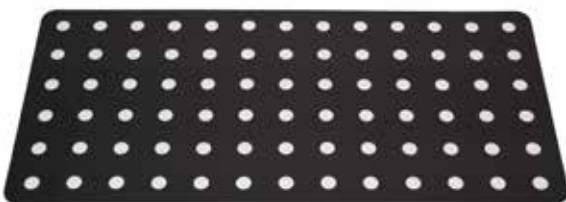
MS-600×600-16



IM-16 in use

Product Weight	: 3.1 kg/ 6.834 lbs	Sheet Thickness	: t0.8
Load Capacity	: (Ref: IM-16 Series)	Max no. ball transfers	: 64

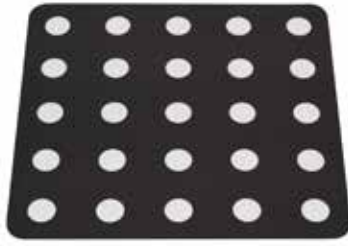
MS-1020×475-16



IM-16 in use

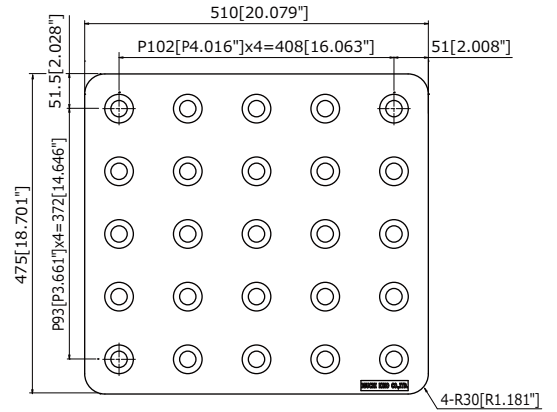
Product Weight	: 3.75 kg/ 8.267 lbs	Sheet Thickness	: t0.8
Load Capacity	: (Ref: IM-16 Series)	Max no. ball transfers	: 78

MS-510×475-25

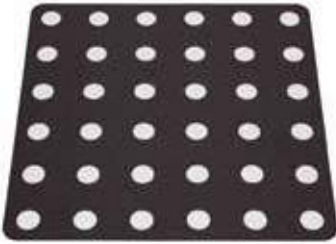


IM-25 in use

Product Weight	: 3.8 kg/ 8.377 lbs	Sheet Thickness	: t0.8
Load Capacity	: (Ref: IM-25 Series)	Max no. ball transfers	: 25

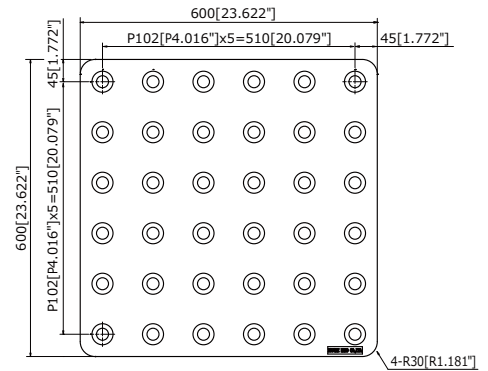


MS-600×600-25

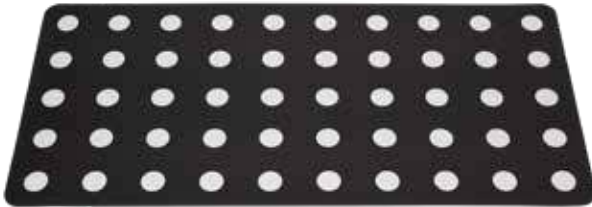


IM-25 in use

Product Weight	: 5.6 kg/ 12.345 lbs	Sheet Thickness	: t0.8
Load Capacity	: (Ref: IM-25 Series)	Max no. ball transfers	: 36

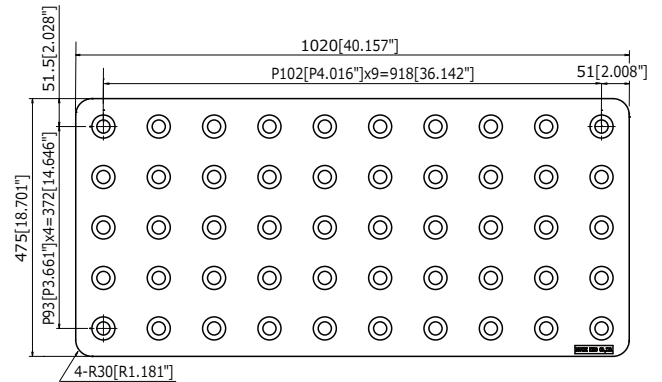


MS-1020×475-25



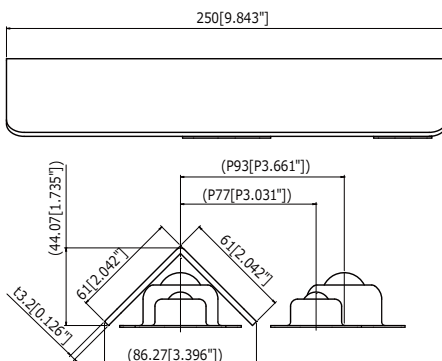
IM-25 in use

Product Weight	: 7.6 kg/ 16.75 lbs	Sheet Thickness	: t0.8
Load Capacity	: (Ref: IM-25 Series)	Max no. ball transfers	: 50



OPTION

MS-STP-01

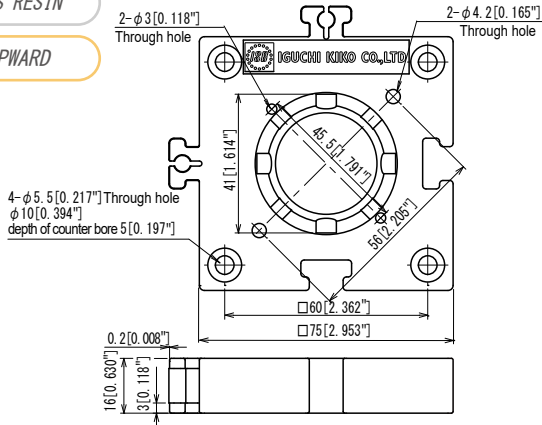


Product Weight	: 7.6 kg/ 16.75 lbs	Material	: Steel
----------------	---------------------	----------	---------

PZ Type (Piece ♥ Peace Puzzle)

ABS RESIN

UPWARD



- Lay out your conveyor with new concept puzzle type base plate ball-transfer
- Choose one from 4 optional ball transfers with different load capacities.
- Optional Magnet and stopper is also available for better performance

Option	Safety Guide	PZ75-WS
	Magnet	PZ75-MG
	Rubber Cap	PZ75-RC

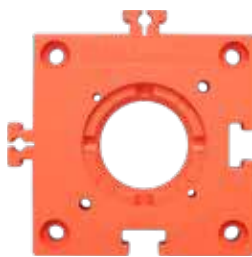
✦ PZ75-BK



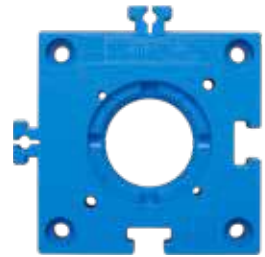
✦ PZ75-WH



✦ PZ75-OR



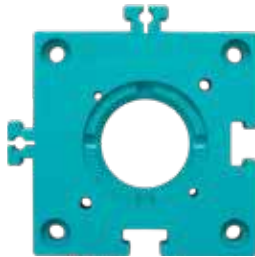
✦ PZ75-BL



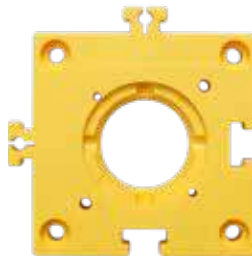
✦ PZ75-RE



✦ PZ75-GR



✦ PZ75-YE

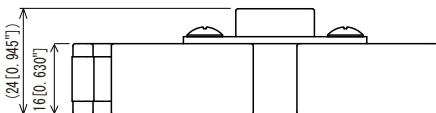


**Attachable
US Type/IP Type(Flange Type)**

Recommended screw	
US-16 Type	M3.5×L6
US-25 Type	M4×L12
IP-25 Type	M5×L12
IP-16 Type	Screw not included

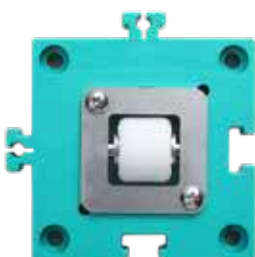
PZ75-Roller

UPWARD/DOWNWARD



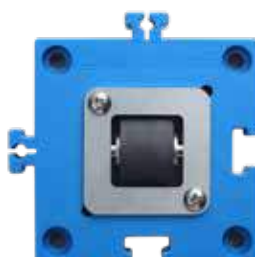
Roller type makes it easy to transfer boxes or containers with uneven bottom shape and also can be used upside down as castors.

✦ PZ75-RL



Product Weight :	0.01234 lbs
Load Capacity :	44 lbf
Roller :	POM

✦ PZ75-R



Product Weight:	0.1 lbs
Load Capacity :	66.1 lbf
Roller :	PP+EPDM

CT Type (Clip Rollers for Simple Trolleys)

RESIN

UPWARD

Load Capacity
30kgf
294N
66lbf



Clip-on castor series for simple trolleys. Can be installed on any piece of wood to simply make a trolley just the right fit for the load. Bolt fixing type also available. Easy removable for smart storage.

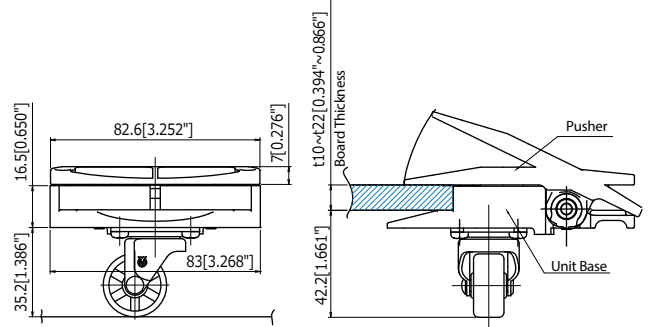
Note: Make sure to choose an appropriate board according to weight of load

RESIN

CT-C



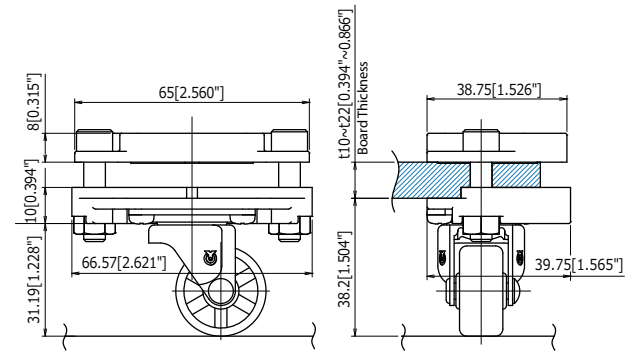
Product Weight	: 0.11 kg/1unit 0.2 lbs	Unit	: RESIN
Load Capacity	: 30kgf/ 98N/ 22lbf (4 unit)	Caster	: Nylon



CT-B-I



Product Weight	: 0.085 kg/1unit 0.18 lbs	Unit	: RESIN
Load Capacity	: 30kgf/ 98N/ 22lbf (4 unit)	Caster	: Nylon



IBU Type/IBT Type

- STEEL
- UPWARD



The ball unit enables article to be moved horizontally in any direction with very little force. It is especially suitable for workstation and inspection areas. Customization options for heavy-duty use are also available.

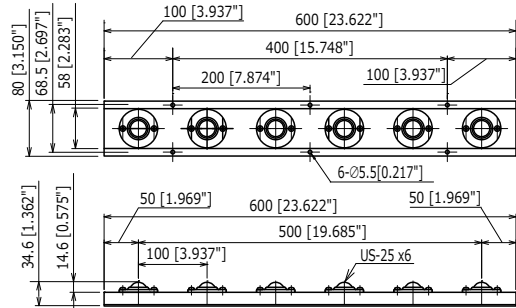
STEEL

IBU-600-100



US-25 in use

Product Weight	: 1.81 kg/ 3.99 lbs	Base	: Steel
Load Capacity	: (Ref: US-25 Series)		

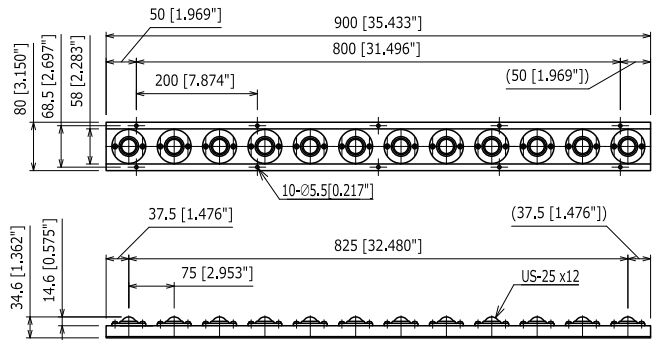


IBU-900-75



US-25 in use

Product Weight	: 3.09 kg/ 6.8 lbs	Base	: Steel
Load Capacity	: (Ref: US-25 Series)		

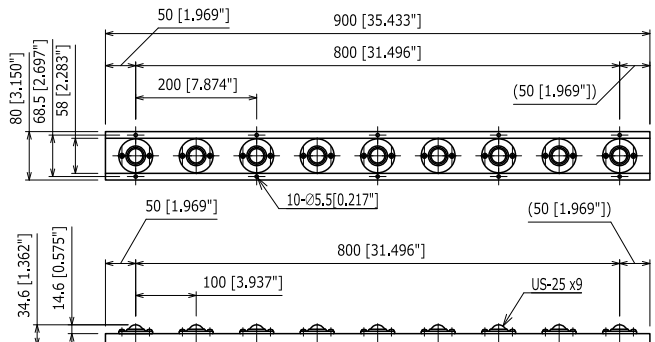


IBU-900-100

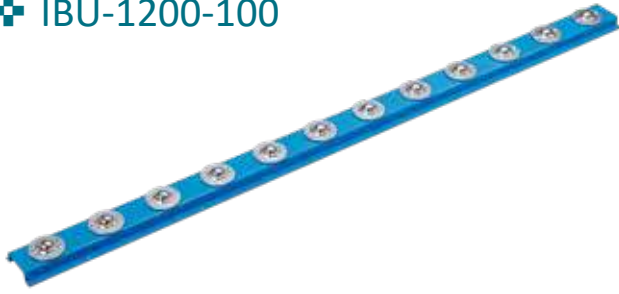


US-25 in use

Product Weight	: 2.71 kg/ 5.97 lbs	Base	: Steel
Load Capacity	: (Ref: US-25 Series)		

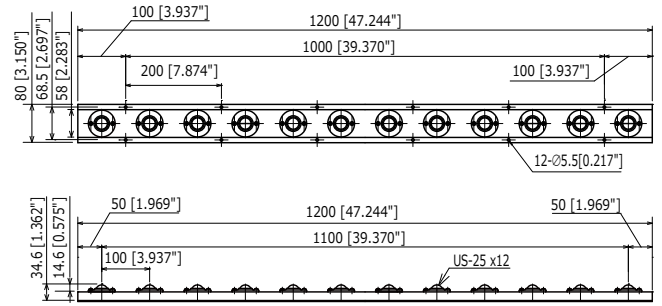


IBU-1200-100



US-25 in use

Product Weight	: 3.49 kg/ 7.7 lbs	Base	: Steel
Load Capacity	: (Ref:US-25 Series)		

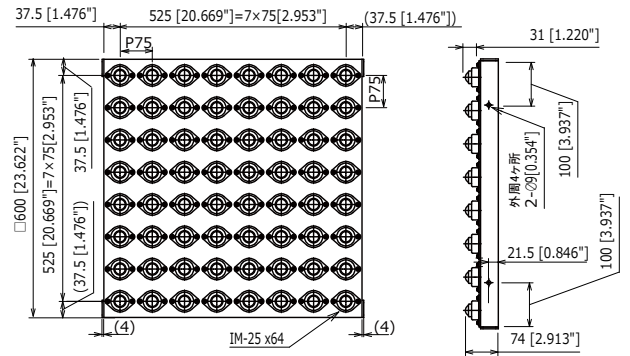


IBT-600-75



IM-25 in use

Product Weight	: 28.27 kg/ 62.3 lbs	Base	: Steel
Load Capacity	: (Ref:Im-25 Series)		

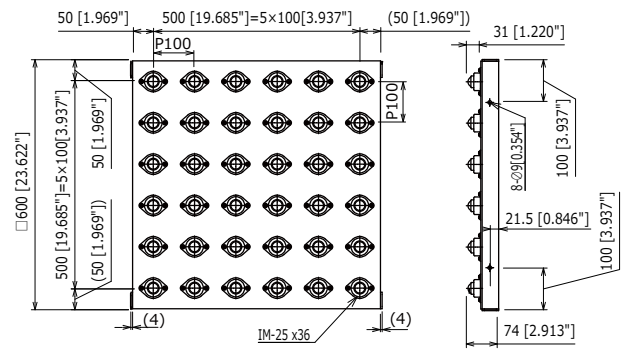


IBT-600-100



IM-25 in use

Product Weight	: 23.87 kg/ 52.6 lbs	Base	: Steel
Load Capacity	: (Ref:IM-25 Series)		



QL Type/QL-FUS Type (Quick Lifter)

UPWARD



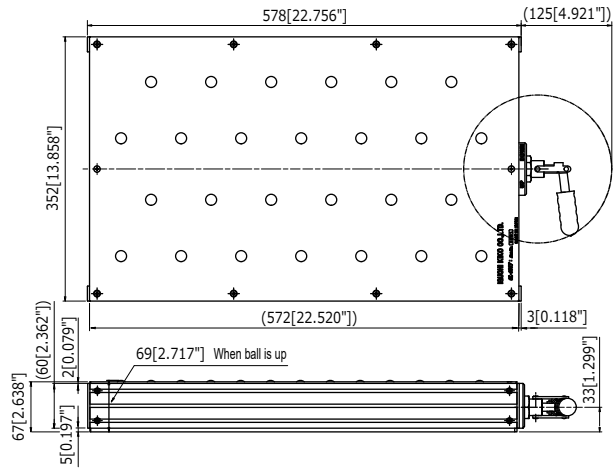
A compact portable lifter table that can be installed on carts worktables and so on..
By manually operating hand-lever to right/left, ball transfer can go up and down to transfer boxes on and off the table.

STEEL

+ QL-3557

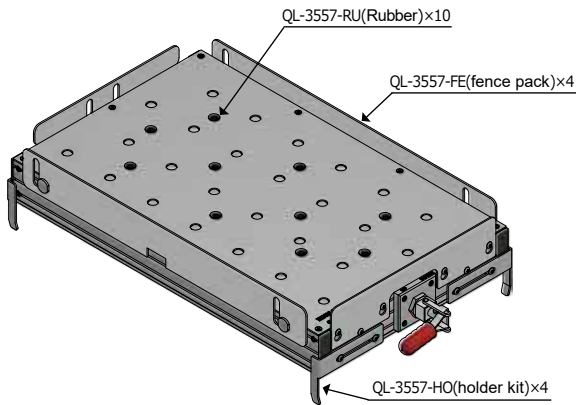


Dynamic Load	: Less than 100kgf	Stroke	: 2mm
Product Weight	: 10.5kg/ 23.15lbs	IM-16 in use	: IM-16
Main Material	: Steel		
	: Aluminum		

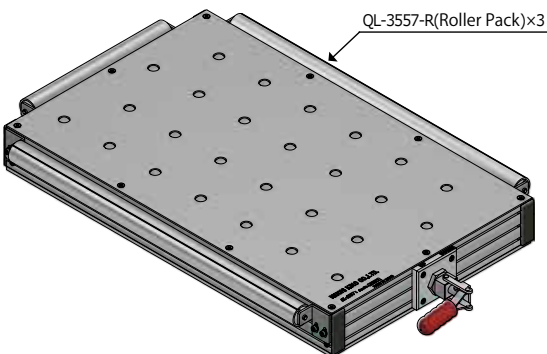


OPTION

For QL-3557



- QL-3557-FE (fence pack) x 4
By elevating fence up and down, can prevent product fall off.
- QL-3557-HO (holder kit) x 4
Side fence to lock QL to carts. Easy to attach and detach.
- QL-3557-RU (Rubber) x (10 pieces one set)
Hold boxes when ball transfers are down.

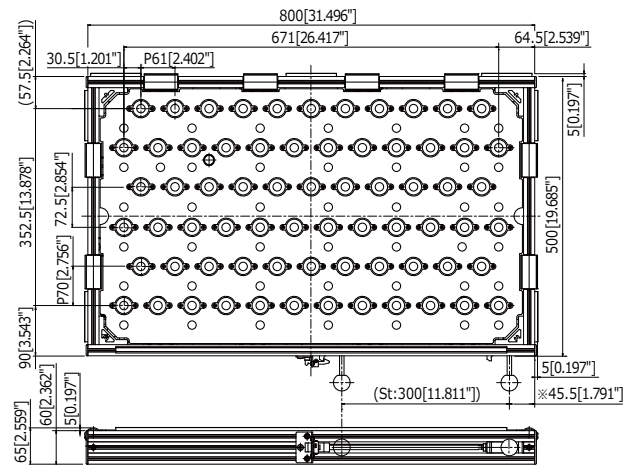


- QL-3557-FE (Roller Kit) x 3
For workload to easily move to and from ball transfer unit.

QL-FUS-5080



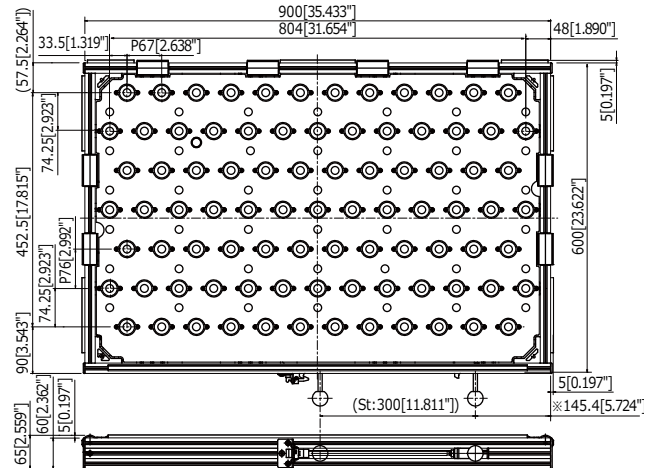
Dynamic Load	: Less than 200kgf	Stroke	: 5mm
Product Weight	: 21.5kg/ 47.40lbs	IM-16 in use	: IM-16
Main Material	: Stainless		
	: Steel		
	: Aluminum		



QL-FUS-6090

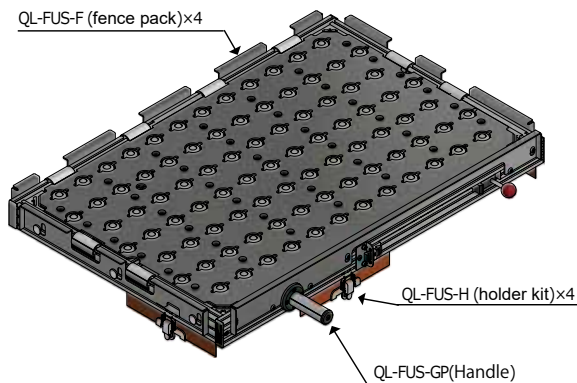


Dynamic Load	: Less than 200kgf	Stroke	: 5mm
Product Weight	: 28.5kg/ 62.83lbs	IM-16 in use	: IM-16
Main Material	: Stainless		
	: Steel		
	: Aluminum		



OPTION

QL-FUS-5080/QL-FUS-6090



- QL-FUS-GP(Handle)
The grip is an optional support for easier lever operation.
- QL-FUS-F-5080/QL-FUS-F-6090 (fence pack) x 4
By elevating fence up and down, can prevent product fall off.
- QL-FUS-H (holder kit) x 4
Side fence to lock QL to carts. Easy to attach and detach.
- QL-3557-RU (Rubber) x (10 pieces one set)
Replacement rubber pads. Each FUS unit come with rubber pads installed.

HIP Type (Roller Unit)

- STEEL
- UPWARD



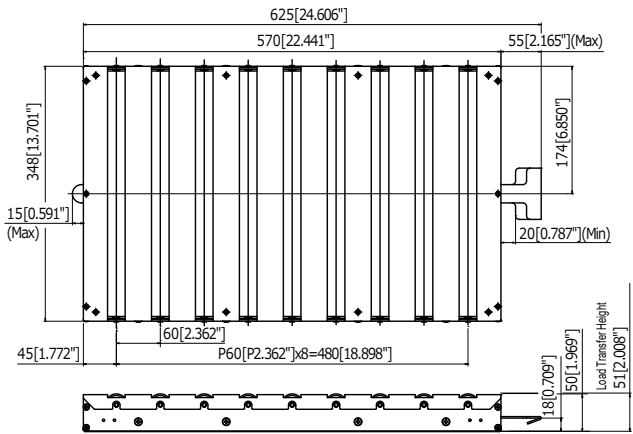
Roller unit for installation on carts, trolleys, production lines, etc. Suitable for loads with soft (non-steel) surfaces. Pushing/pulling the lever deactivates/activates the roller brakes, to prevent load from rolling off the unit, when trolley moves. Customization options are available for lever position.

STEEL

HIP-L-3557



Dynamic Load	: Less than 30kgf	Body	: SS
Product Weight	: 8.5kg	Roller	: Aluminum
		Cover	: SS



IR Type

STEEL

UPWARD

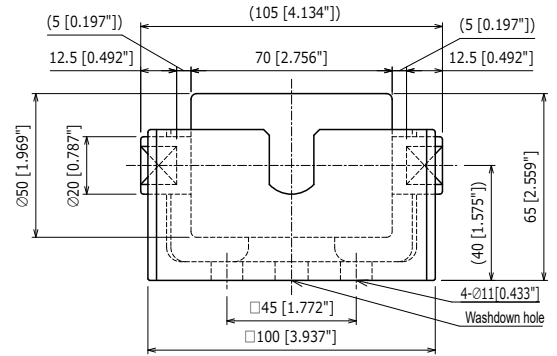
Load Capacity
200 ~ 300kgf
1960 ~ 2940N
441 ~ 662lbf



90 degree 2 ways, direction changing roller unit, for applications such as airplane cargo, ship cargo, freight transportation, places where space is limited.
We also sell only the roller part.

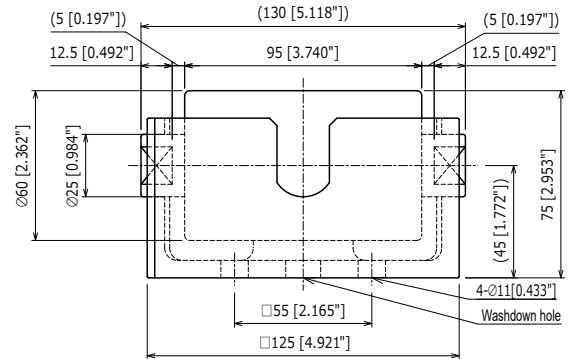
STEEL

IR-100



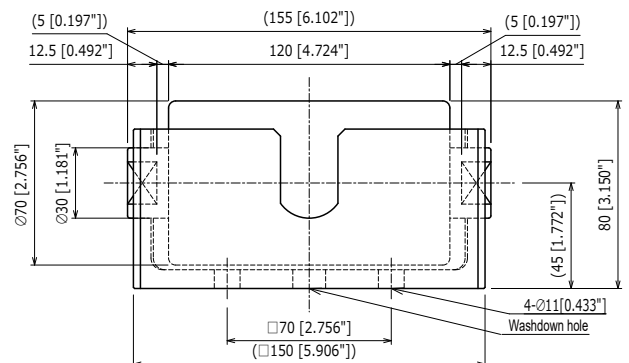
Dynamic Load	: 2.1 kg/ 4.6 lbs	Case	: FC250
Product Weight	: 200 kgf/ 1960 N/ 441 lbf	Roller	: STKM
		Shaft	: S45C

IR-125



Dynamic Load	: 4 kg/ 8.8 lbs	Case	: FC250
Product Weight	: 250 kgf/ 2450 N/ 551 lbf	Roller	: STKM
		Shaft	: S45C

IR-150



Dynamic Load	: 5.3 kg/ 12 lbs	Case	: FC250
Product Weight	: 300 kgf/ 2940 N/ 662 lbf	Roller	: STKM
		Shaft	: S45C

IRT Type

STEEL

UPWARD

Load Capacity
 30 ~ 500kgf
 294 ~ 4903.3N
 66 ~ 1102.3lbf

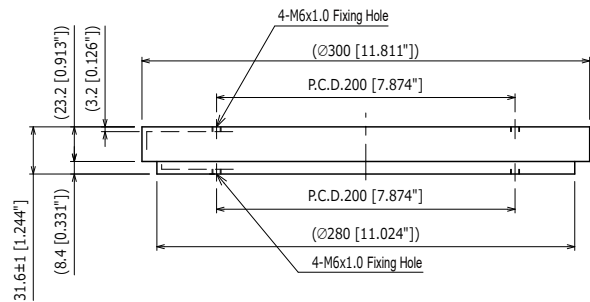
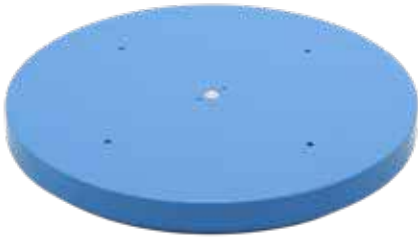


IRT rotary tables are a convenient, accurate method of positioning or rotating a load manually with a smooth rotation in a conveyor system. Customization options are available upon request. Please contact our sales representatives.

Note) Hoist bolt hole and fixing hole cannot be used simultaneously.

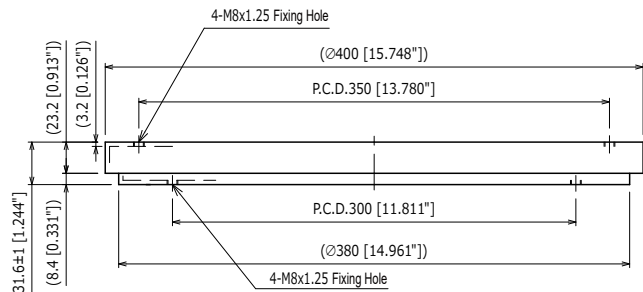
STEEL

IRT-300



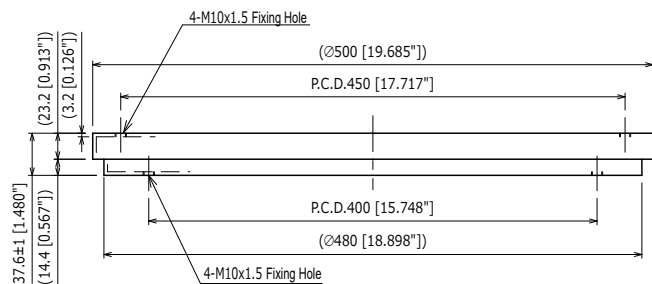
Product Weight	: 4.4 kg/ 11 lbs	Table	: Steel
Load Capacity	: 30 kgf/ 294 N/ 66 lbf	Base	: Steel

IRT-400



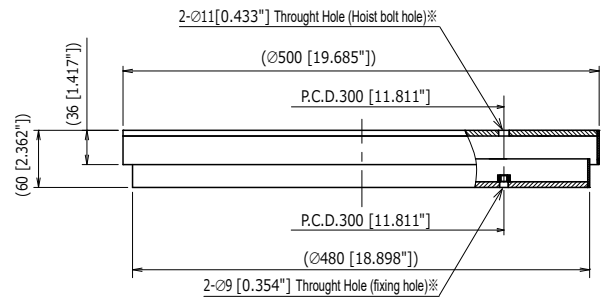
Product Weight	: 7.4 kg/ 17.6 lbs	Table	: Steel
Load Capacity	: 50 kgf/ 490 N/ 110 lbf	Base	: Steel

IRT-500



Product Weight	: 12.5 kg/ 27.6 lbs	Table	: Steel
Load Capacity	: 100 kgf/ 980 N/ 221 lbf	Base	: Steel

IRT-500R



※ M8×1.25 (Bottom inner nut)

Product Weight	: 21 kg/ 46.3 lbs	Table	: Steel
Load Capacity	: 500 kgf/ 4903.3 N/ 1102.3 lbf	Base	: Steel

ISB Ball Transfer

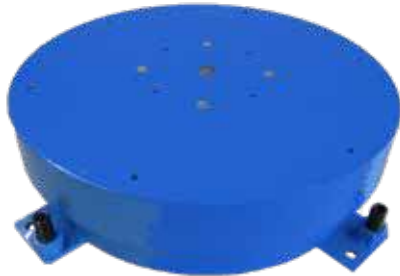
IRT-M Type

STEEL

Motorized

UPWARD

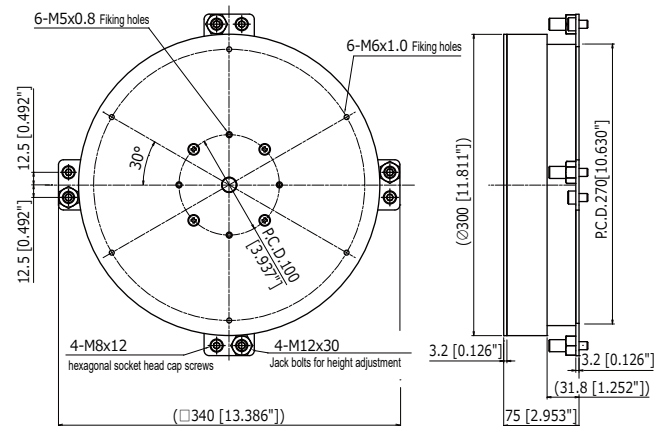
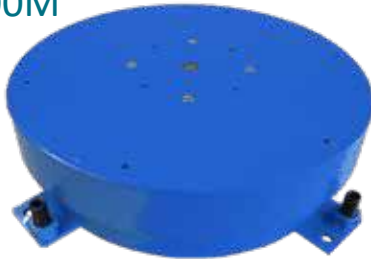
Load Capacity
50kgf
490N
110lbf



Motorized turntables for applications such as exhibit displays, assembly lines, etc. These motorized turntables are relatively compact and portable. Includes speed control and direction control.

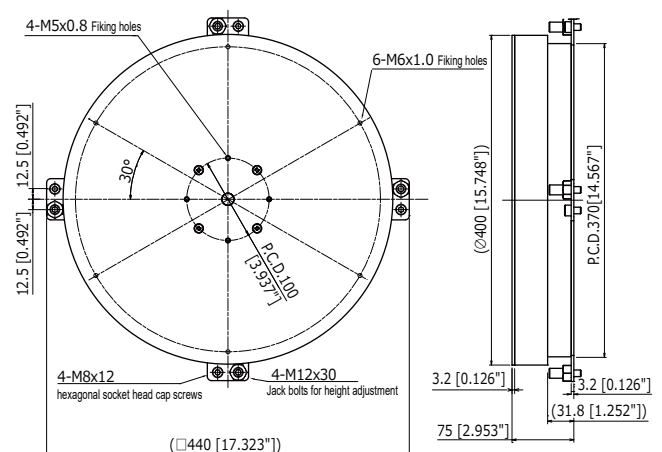
STEEL

IRT-300M



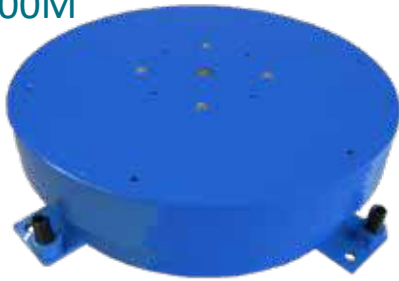
Product Weight	: 8.6 kg/ 19 lbs	Table	: Steel
Load Capacity	: 50 kgf/ 490 N/ 110 lbf	Base	: Steel
		Rotation speed	: 0 ~ 8
		Motor	: 0.015
		Power source	: 100V

IRT-400M

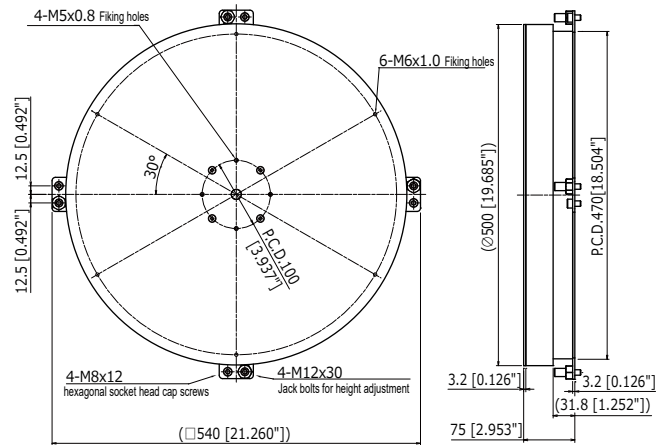


Product Weight	: 12.5 kg/ 27.6 lbs	Table	: Steel
Load Capacity	: 50 kgf/ 490 N/ 110 lbf	Base	: Steel
		Rotation speed	: 0 ~ 8
		Motor	: 0.015
		Power source	: 100V

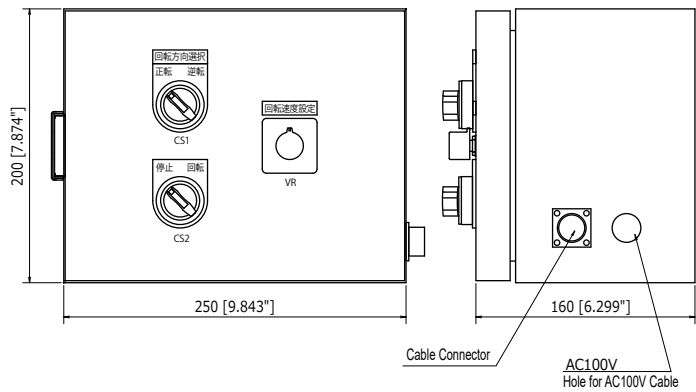
IRT-500M



Product Weight	: 17 kg/ 37.5 lbs	Table	: Steel
Load Capacity	: 50 kgf/ 490 N/ 110 lbf	Base	: Steel
		Rotation speed	: 0 ~ 8
		Motor	: 0.015
		Power source	: 100V



Control Box



Motor Connection Cable : 5m

ISB Ball Transfer

IRL Type/IRL-T Type

STEEL

UPWARD

Load Capacity
400kgf
3922.6N
881.8lbf



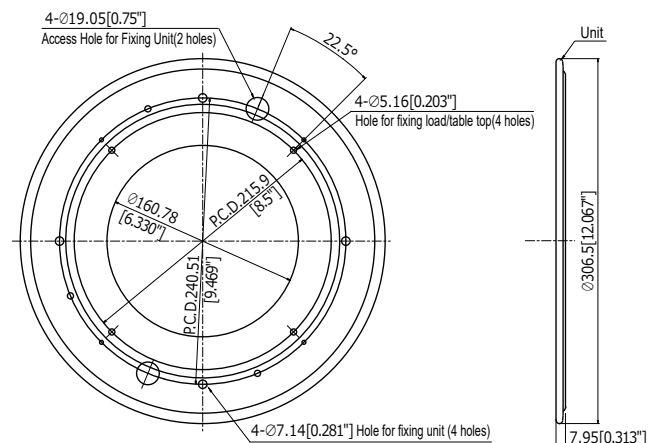
Lazy Susan rings for heavy-duty use. Table tops can be attached for use as rotating tables. Compact and cost effective. Customization options for table tops available.

STEEL

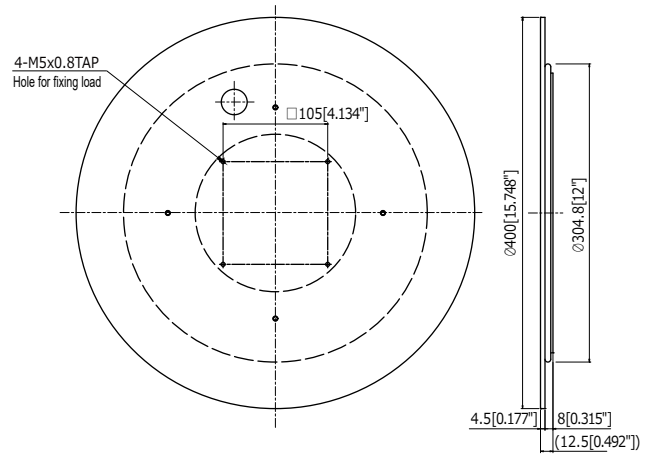
IRL-300



Product Weight	: 0.775 kg/ 1.70 lbs	Ring	: Steel
Uniform Load	: 400 kgf/ 3922.6 N/ 881.8 lbf		

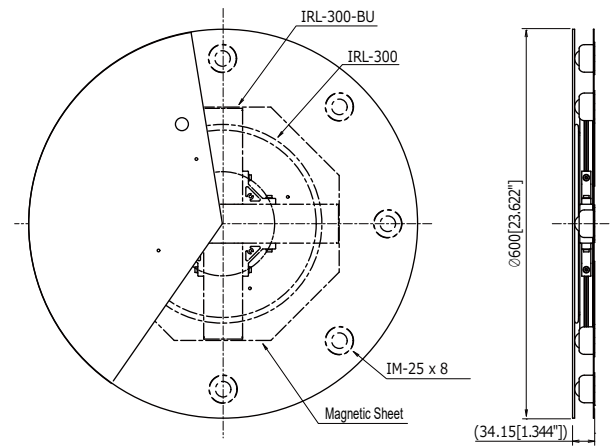


IRL-300-T



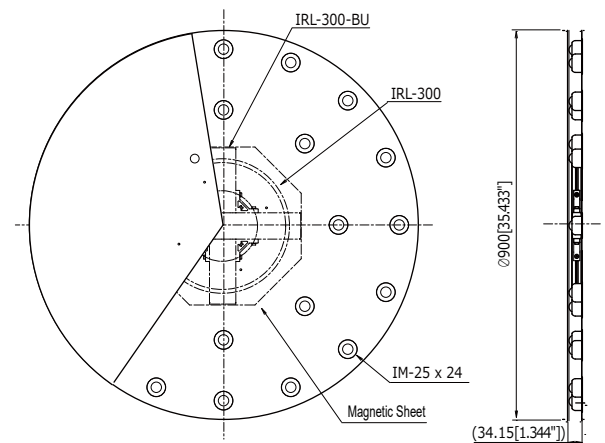
Product Weight	: 4.8 kg/ 10.58 lbs	Table	: SPHC
Uniform Load	: 400 kgf/ 3922.6 N/ 1102.3 lbf	Ring	: Steel

IRL-300-T600



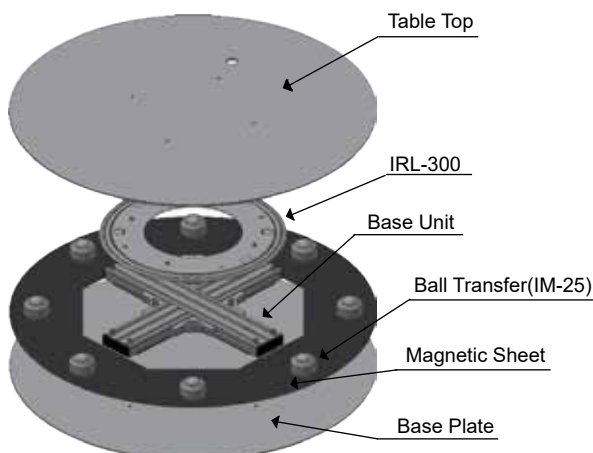
Product Weight	: 10.4 kg/ 22.93 lbs	Table	: SUS304
Uniform Load	: 400 kgf/ 3922.6 N/ 881.8 lbf		

IRL-300-T900



Product Weight	: 21.7 kg/ 47.84 lbs	Table	: SUS304
Uniform Load	: 400 kgf/ 3922.6 N/ 881.8 lbf		

Option



• IRL-300-T600-BT / IRL-300-T900 (Base Plate)
For non-magnetic surfaces

Purchase options for IRL-300

• IRL-300-BU (Base Unit)
For combined unit using ball transfers

• IRL-300-T600-TS / IRL-300-T900-TS (Rotating Table Set)
Table Top + Ball Transfers + Magnetic Sheet

IRH Type

ALUMINUM

UPWARD/DOWNWARD

Load Capacity
30 ~ 50kgf
294 ~ 490N
66 ~ 110lbf

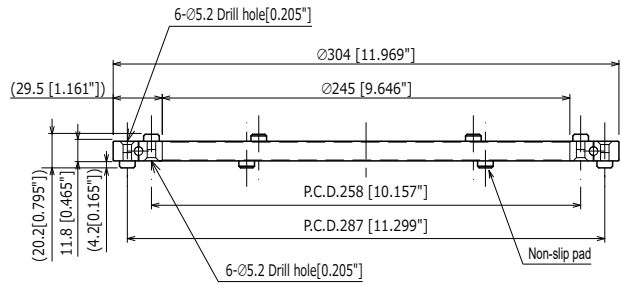


ISB Lazy Susan rings consist of outer ring and an inner ring, in upward position the inner ring rotates in downward position outer ring will rotate. It can be fixed through holes. Suitable for various kinds of medium & high grade show, shelves, dining-tables, all types of rotary tables, furniture, spray painting tables, show display table & TV shelves.

Double ring function and feature: Light and durable with strong endurance and free rotation in a complete circle.

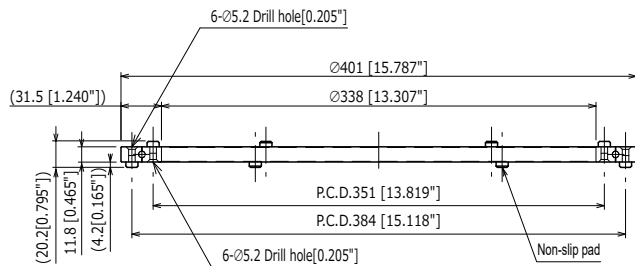
ALUMINUM

+ IRH-300



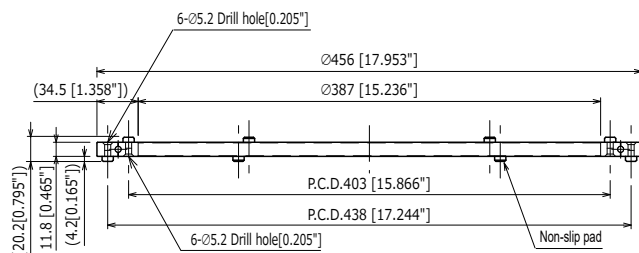
Product Weight	: 0.8 kg/ 7.84 N/ 1.8 lbs	Ring	: Aluminum
Load Capacity	: 30 kgf/ 294 N/ 66 lbf	Non-slip pad	: Hard Rubber

+ IRH-400



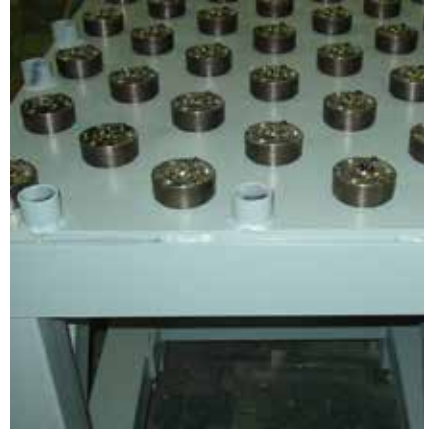
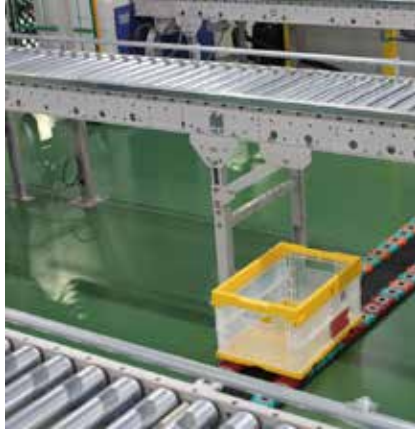
Product Weight	: 1.2 kg/ 11.8 N/ 2.6 lbs	Ring	: Aluminum
Load Capacity	: 40 kgf/ 392 N/ 88 lbf	Non-slip pad	: Hard Rubber

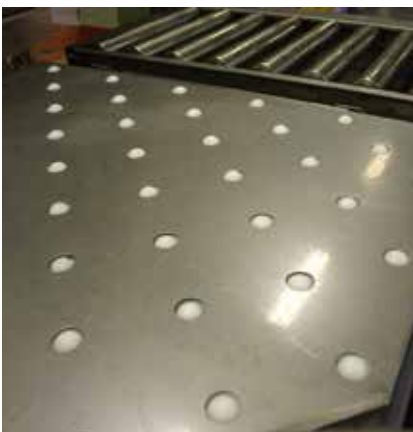
+ IRH-455



Product Weight	: 1.4 kg/ 13.7 N/ 3.1 lbs	Ring	: Aluminum
Load Capacity	: 50 kgf/ 490 N/ 110 lbf	Non-slip pad	: Hard Rubber

Type	Surface Finishing (1)		Surface Finishing (2)		Surface Finishing (3)	
IS-10/ 13/ 19	Cap	Nickel Plating				
IS-25/ 38/ 51/76/100/127	Cap	Nickel Plating	Screw	Trivalent Chromate		
IK-19-22/25/38/51/76 IK-100/127	Body,Cap,Snap Ring	Nickel Plating				
IA-19/25/38	Body	Alumite	Snap Ring	Nickel Plating		
IA-19R/25R/38R	Body	Alumite	Snap Ring	Nickel Plating		
IS-05N/06N/08N	Cap	Nickel Plating				
IS-10N/13N	Cap	Nickel Plating	Locking Screws	Black Oxide Coating		
IS-16N	Cap	Nickel Plating				
IS-19N/25N/38N	Cap	Nickel Plating	Locking Screws	Black Oxide Coating		
CP-06H/09H/13H/19H CP-13D/16D/19D	Cap	Nickel Plating				
CP-10B	Body	Electroless Nickel Plating				
IK-19N/22N/25N IK-38N/51N	Body,Cap,Snap Ring	Nickel Plating				
IK-13NM/16NM	Cap	Nickel Plating				
IK-19NM/22NM/25N	Body,Cap	Nickel Plating				
IS-10B/13B/19B IS-25B/38B	Cap,Body,Screws	Nickel Plating				
IS-10BF/13BF/19BF IS-25BF/38BF	Cap,Body,Flange,Screws	Nickel Plating				
IS-14BM/19BM	Cap,Body,Screws	Nickel Plating	Screw	Trivalent Chromate		
IS-19BK-05/25BK-08	Cap, Spring Holder	Nickel Plating	Nuts	Trivalent Chromate		
IS-25BK-20	Cap, Spring Holder	Nickel Plating	Nuts	Trivalent Chromate	Spring	Painting
IS-16BD/19BD/25BD	Cap, Support Cap, Casing	Black Oxide Coating	Spring Holder	Nickel Plating		
IS-30D	Support Cap,Body	Trivalent Chromate				
ND-138/350	Body,Cap	Nickel Plating				
S-05/06/08/10/13	Cap	Nickel Plating				
S-22/25/38/51/76	Cap	Nickel Plating	Screw	Trivalent Chromate		
IM-12/20/30 IM-25/25R/25J	Cap,Body	Trivalent Chromate				
IM-16/16R/16J	Cap,Body,Washer	Trivalent Chromate				
IB-19/25	Body,Body	Nickel Plating				
US-16/25/25J	Cap,Body,Washer	Trivalent Chromate				
UM-12B/16B/12BJ	Cap,Body,Casing	Trivalent Chromate				
IJH-19/25/38	Snap Ring	Nickel Plating				
IJP-19/25/38	Snap Ring	Nickel Plating				
MS-STP-01	Stopper	Zinc Plating				
CT-C/CT-B-I	Castor	Unichrome Plating	Screw	Trivalent Chromate		
IBU-600-100/900-100 IBU-900-75/1200-100	(US-25)		Baseplate	Painted	Screw	Trivalent Chromate
IBT-600-75/600-100	(IM-25)		Baseplate	Painted	Screw	Trivalent Chromate
QL-3557	Bottom Plate,Block,Push Bar Toggle Base,Mid plate	Anodized	Top Plate	Anodized	Toggle Clamp	Trivalent Chromate
QL-FUS-5080/6090			Frame Nuts, Latch	Trivalent Chromate	Cylinder Fittings	Nickel Plating
			Modular Frame	Anodized	Tube Fittings	Electroless Nickel Plating
IR-100/125/150	Case,Roller,Shaft,Snap Ring	Nickel Plating				
IRT-300/400/500	Table Top, Table Base Plate	Painted	Screw	Trivalent Chromate	Bearing Housing, Center Axis	Nickel Plating
IRT-500R	Table Top, Table Base Plate	Painted	Screw	Trivalent Chromate	Center Axis	Nickel Plating
IRT-300M/400M/500M	Table Top, Table Base Plate	Painted	Shaft (Drive Unit)	Electroless Nickel Plating	Shaft (Drive Unit)	Trivalent Chromate
	Bracket to affix Motor (Drive Unit)	Anodized	Screw	Blackening Trivalent Chromate		
IRL-300-T600/T900	Rotary Bearings	Zinc Plating	Modulat Frame	Anodized	Frame Nuts	Trivalent Chromate
IRH-300/400/455			Screw	Black Oxide Coating		





* Part numbers, models, descriptions and technical characteristics may be modified by IGUCHI KIKO.,CO.LTD without prior notification.

* This catalogue is the copyright of IGUCHI KIKO CO.,LTD. and fully protected. Nothing may be reprinted or reproduced without the written consent of IGUCHI KIKO CO.,LTD.



IGUCHIKIKO CO., LTD.

Head Office 1-20-7, Minamiohizumi, Nerima-ku, Tokyo, 178-0064, Japan
Osaka Branch Esakachou, Suita-shi, Osaka, 564-0063, Japan
Nagoya Branch 1-34-601, Noritakehontoori, Nakamura-ku, Nagoya, Aichi, 453-0017, Japan
Kyushu Branch 2356-7-1, Nakayama, Kurate-machi kurate-gun, Fukuoka 8071312, Japan
Nerima Factory 1-22-9, Minamiohizumi, Nerima-ku, Tokyo, 178-0064, Japan
Fuchu Factoru 5-40, Yotsuya, Fuchu, Tokyo, 183-0035, Japan
Ibaraki Factory 962-157, Yamazaki, Ishioka-shi, Ibaraki, 3150125, Japan

ISB KOREA (Head Office, Factory)

IGUCHI Thailand (Head Office, Factory)

America Office(San Diego) TAIWAN Office

TEL.03-3923-1211 FAX.03-3923-8100
TEL.06-6192-7785 FAX.06-6192-7786
TEL.052-486-7557 FAX.052-486-7565
TEL.0949-28-9400 FAX.0949-28-9401
TEL.03-3923-1211 FAX.03-3923-8100
TEL.042-361-8783 FAX.042-360-7899
TEL.0299-46-5811 FAX.0299-46-5817



www.isb-iguchi.com



ISB mascot character
'Ta-botto'