





# ROLLER FOLLOWERS

# STAINLESS STEEL



## Type and Part Code

Type	Applicable axis diameter	Feature	Part Code
 RNAST..M (Separable type)	φ 7 ~ φ 60	NAST type without inner ring.	<p><b>RNAST</b>   <b>15</b>   <b>M</b>   <b>R</b></p> <p>↑   ↑   ↑   ↑</p> <p>Type   Bore diameter code</p> <p><b>Stainless steel</b>   <b>R</b>: Crowned outer ring <b>None</b>: Cylindrical outer rings</p>
 NAST..M (Separable type)	φ 6 ~ φ 50	Thick wall outer ring, inner ring. Separable bearing with combined needle roller with precision cage.	<p><b>NAST</b>   <b>15</b>   <b>M</b>   <b>R</b></p> <p>↑   ↑   ↑   ↑</p> <p>Type   Bore diameter code</p> <p><b>Stainless steel</b>   <b>R</b>: Crowned outer ring <b>None</b>: Cylindrical outer rings</p>
 NAST..MZZ (Separable type)	φ 6 ~ φ 50	Separable bearing in which labyrinth seal is formed with combined side plate at both sides of inner ring of NAST type. (NAST-ZZUU type comes with seal)	<p><b>NAST</b>   <b>15</b>   <b>M</b>   <b>ZZ</b>   <b>UU</b>   <b>R</b></p> <p>↑   ↑   ↑   ↑   ↑   ↑</p> <p>Type   Bore diameter code</p> <p><b>Stainless steel</b>   <b>ZZ</b>: With shield   <b>UU</b>: With seal <b>None</b>: With shield</p> <p><b>R</b>: Crowned outer ring <b>X</b>: Cylindrical outer ring</p>
 NART..MR (Non-separable type)	φ 5 ~ φ 50	Non-separable bearing with fixed side plate at inner ring. Mitigate eccentric load with spherical shape at outer diameter of outer ring (code R). (NART-UUR type comes with seal)	<p><b>NART</b>   <b>15</b>   <b>M</b>   <b>UU</b>   <b>V</b>   <b>R</b></p> <p>↑   ↑   ↑   ↑   ↑   ↑</p> <p>Type   Bore diameter code</p> <p><b>Stainless steel</b>   <b>UU</b>: With seal   <b>V</b>: Full complement <b>None</b>: With shield</p> <p><b>R</b>: Crowned outer ring <b>X</b>: Cylindrical outer ring</p>

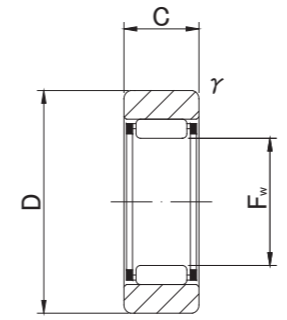
**ROLLER FOLLOWERS**  
**STAINLESS STEEL**  
SEPARABLE WITHOUT INNER RING



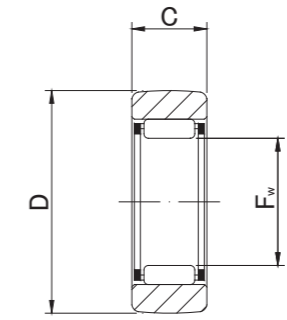
SUS/INOX



RNAST..M



RNAST..M



RNAST..MR

**RNAST..M TYPE**

Prepacked Grease

Shaft Diameter (mm)	Designation		Dimensions (mm)				Basic dynamic load rating	Basic static load rating	Track load capacity		Limiting speed *	Mass		
	Cylindrical outer ring	Crowned outer ring (R500)	Fw	D	C	f <sub>s</sub> min			Cr N	Cor N			Cylindrical outer ring N	Crowned outer ring N
7	RNAST 5M	RNAST 5MR	7 <sup>+0.022</sup> / <sub>+0.013</sub>	16	7.8	0.3	2 520	2 190	2 350	1 080	30 000	8.9		
10	RNAST 6M	RNAST 6MR	10 <sup>+0.027</sup> / <sub>+0.016</sub>	19	9.8	0.3	3 790	4 180	3 530	1 370	20 000	13.9		
12	RNAST 8M	RNAST 8MR	12 <sup>+0.027</sup> / <sub>+0.016</sub>	24	9.8	0.6	5 220	5 410	4 020	1 860	17 000	23.5		
14	RNAST10M	RNAST10MR	14 <sup>+0.027</sup> / <sub>+0.016</sub>	30	11.8	1	8 920	8 890	5 590	2 450	15 000	42.5		
16	RNAST12M	RNAST12MR	16 <sup>+0.027</sup> / <sub>+0.016</sub>	32	11.8	1	9 560	10 020	5 980	2 740	13 000	49.5		
20	RNAST15M	RNAST15MR	20 <sup>+0.033</sup> / <sub>+0.020</sub>	35	11.8	1	11 310	13 150	6 570	3 140	10 000	50		
22	RNAST17M	RNAST17MR	22 <sup>+0.033</sup> / <sub>+0.020</sub>	40	15.8	1	16 000	19 220	10 900	3 720	9 500	90		
25	RNAST20M	RNAST20MR	25 <sup>+0.033</sup> / <sub>+0.020</sub>	47	15.8	1	17 660	22 540	12 700	4 610	8 500	135		
30	RNAST25M	RNAST25MR	30 <sup>+0.033</sup> / <sub>+0.020</sub>	52	15.8	1	19 040	26 120	14 100	5 290	7 000	152		
38	RNAST30M	RNAST30MR	38 <sup>+0.041</sup> / <sub>+0.025</sub>	62	19.8	1	27 870	41 760	22 100	6 660	5 500	255		
42	RNAST35M	RNAST35MR	42 <sup>+0.041</sup> / <sub>+0.025</sub>	72	19.8	1	29 620	46 550	25 700	8 130	5 000	375		
50	RNAST40M	RNAST40MR	50 <sup>+0.041</sup> / <sub>+0.025</sub>	80	19.8	1.5	32 840	56 210	26 900	9 310	4 000	420		
55	RNAST45M	RNAST45MR	55 <sup>+0.049</sup> / <sub>+0.030</sub>	85	19.8	1.5	34 130	61 080	28 500	10 100	4 000	460		
60	RNAST50M	RNAST50MR	60 <sup>+0.049</sup> / <sub>+0.030</sub>	90	19.8	1.5	35 600	66 050	30 200	11 000	3 500	500		

\* Suitable for grease lubrication. In case of oil lubrication, up to 130% of this value shall be permissible.

OUTER RINGS TOLERANCE

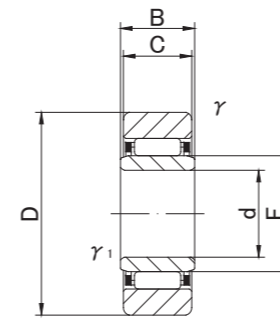
TYPE	Cylindrical outer ring	Crowned outer ring
RNAST5M	0/-8	0/-50
RNAST6M,RNAST8M,RNAST10M	0/-9	0/-50
RNAST12M,RNAST15M,RNAST17M,RNAST20M	0/-11	0/-50
RNAST25M,RNAST30M,RNAST35M,RNAST40M	0/-13	0/-50
RNAST45M,RNAST50M	0/-15	0/-50

RNAST..M

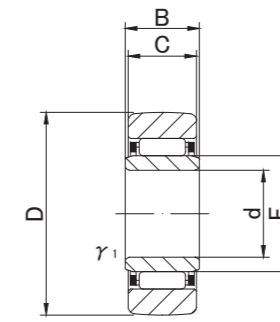
RNAST..M



NAST..M



NAST..M



NAST..MR

NAST..M TYPE

Prepacked Grease

Shaft Diameter (mm)	Designation		Dimensions (mm)								Basic dynamic load rating	Basic static load rating	Track load capacity		Limiting speed *	Mass	
	Cylindrical outer ring	Crowned outer ring (R500)	d	D	B	C	r1s min	r1s min	F	Cr N			Cor N	Cylindrical outer ring N			Crowned outer ring N
6	NAST 6M	NAST 6MR	6 <sup>0</sup> <sub>-0.008</sub>	19	10	9.8	0.3	0.3	10	3 790	4 180	3 530	1 370	20 000	17.8		
8	NAST 8M	NAST 8MR	8 <sup>0</sup> <sub>-0.008</sub>	24	10	9.8	0.6	0.3	12	5 220	5 410	4 020	1 860	17 000	28		
10	NAST10M	NAST10MR	10 <sup>0</sup> <sub>-0.008</sub>	30	12	11.8	1	0.3	14	8 920	8 890	5 590	2 450	15 000	50		
12	NAST12M	NAST12MR	12 <sup>0</sup> <sub>-0.008</sub>	32	12	11.8	1	0.3	16	9 560	10 020	5 980	2 740	13 000	58		
15	NAST15M	NAST15MR	15 <sup>0</sup> <sub>-0.008</sub>	35	12	11.8	1	0.3	20	11 310	13 150	6 570	3 140	10 000	62		
17	NAST17M	NAST17MR	17 <sup>0</sup> <sub>-0.010</sub>	40	16	15.8	1	0.3	22	16 000	19 220	10 900	3 720	9 500	110		
20	NAST20M	NAST20MR	20 <sup>0</sup> <sub>-0.010</sub>	47	16	15.8	1	0.3	25	17 660	22 540	12 700	4 610	8 500	155		
25	NAST25M	NAST25MR	25 <sup>0</sup> <sub>-0.010</sub>	52	16	15.8	1	0.3	30	19 040	26 120	14 100	5 290	7 000	180		
30	NAST30M	NAST30MR	30 <sup>0</sup> <sub>-0.010</sub>	62	20	19.8	1	0.6	38	27 870	41 760	22 100	6 660	5 500	320		
35	NAST35M	NAST35MR	35 <sup>0</sup> <sub>-0.012</sub>	72	20	19.8	1	0.6	42	29 620	46 550	25 700	8 130	5 000	440		
40	NAST40M	NAST40MR	40 <sup>0</sup> <sub>-0.012</sub>	80	20	19.8	1.5	1	50	32 840	56 210	26 900	9 310	4 000	530		
45	NAST45M	NAST45MR	45 <sup>0</sup> <sub>-0.012</sub>	85	20	19.8	1.5	1	55	34 130	61 080	28 500	10 100	4 000	580		
50	NAST50M	NAST50MR	50 <sup>0</sup> <sub>-0.012</sub>	90	20	19.8	1.5	1	60	35 600	66 050	30 200	11 000	3 500	635		

\* Suitable for grease lubrication. In case of oil lubrication, up to 130% of this value shall be permissible.

OUTER RINGS TOLERANCE (Outside diameter) (µm)

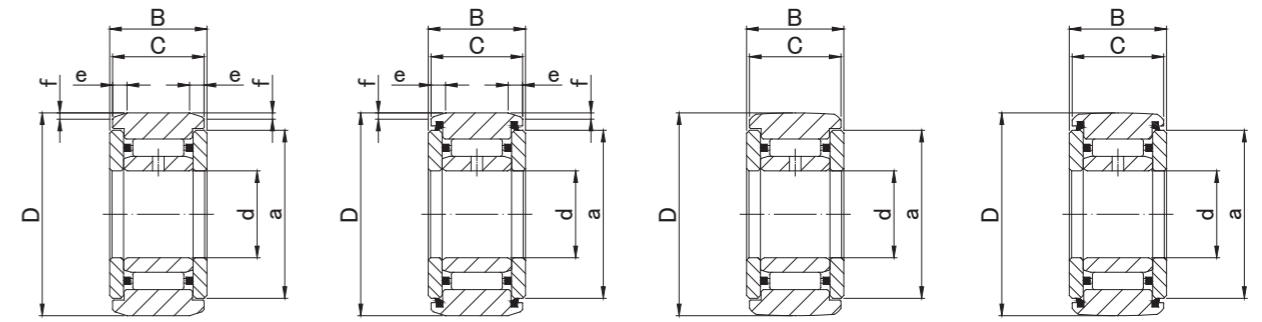
TYPE	Cylindrical outer ring	Crowned outer ring
NAST6M,NAST8M,NAST10M	0/-9	0/-50
NAST12M,NAST15M,NAST17M,NAST20M	0/-11	0/-50
NAST25M,NAST30M,NAST35M,NAST40M	0/-13	0/-50
NAST45M,NAST50M	0/-15	0/-50



**ROLLER FOLLOWERS**  
**STAINLESS STEEL**  
SEPARABLE WITH INNER RING WITH SHIELD



NAST..MZZ



NAST..MZZ

NAST..MZZUU

NAST..MZZR

NAST..MZZUUR

**NAST..MZZ TYPE**

Prepacked Grease

Shaft Diameter (mm)	Designation				Dimensions (mm)								Basic dynamic load rating	Basic static load rating	Track load capacity		Limiting speed * rpm	Mass g (approx)	
	Cylindrical outer ring		Crowned outer ring (R500)		d	D	B	C	a	e	f	Cr N			Cor N	Cylindrical outer ring N			Crowned outer ring N
	Without seals	With seals	Without seals	With seals															
<b>6</b>	<b>NAST 6MZZ</b>	<b>NAST 6MZZUU</b>	<b>NAST 6MZZR</b>	<b>NAST 6MZZUUR</b>	6 <sup>0</sup> <sub>-0.008</sub>	<b>19</b>	14	13.8	14	2.5	0.8	3 790	4 180	3 530	1 370	20 000	24.5		
<b>8</b>	<b>NAST 8MZZ</b>	<b>NAST 8MZZUU</b>	<b>NAST 8MZZR</b>	<b>NAST 8MZZUUR</b>	8 <sup>0</sup> <sub>-0.008</sub>	<b>24</b>	14	13.8	17.5	2.5	0.8	5 220	5 410	4 510	1 860	17 000	39		
<b>10</b>	<b>NAST10MZZ</b>	<b>NAST10MZZUU</b>	<b>NAST10MZZR</b>	<b>NAST10MZZUUR</b>	10 <sup>0</sup> <sub>-0.008</sub>	<b>30</b>	16	15.8	23.5	2.5	0.8	8 920	8 890	6 860	2 450	15 000	65		
<b>12</b>	<b>NAST12MZZ</b>	<b>NAST12MZZUU</b>	<b>NAST12MZZR</b>	<b>NAST12MZZUUR</b>	12 <sup>0</sup> <sub>-0.008</sub>	<b>32</b>	16	15.8	25.5	2.5	0.8	9 560	10 020	7 350	2 740	13 000	75		
<b>15</b>	<b>NAST15MZZ</b>	<b>NAST15MZZUU</b>	<b>NAST15MZZR</b>	<b>NAST15MZZUUR</b>	15 <sup>0</sup> <sub>-0.008</sub>	<b>35</b>	16	15.8	29	2.5	0.8	11 310	13 150	8 040	3 140	10 000	83		
<b>17</b>	<b>NAST17MZZ</b>	<b>NAST17MZZUU</b>	<b>NAST17MZZR</b>	<b>NAST17MZZUUR</b>	17 <sup>0</sup> <sub>-0.010</sub>	<b>40</b>	20	19.8	32.5	3	1	16 000	19 220	11 800	3 720	9 500	135		
<b>20</b>	<b>NAST20MZZ</b>	<b>NAST20MZZUU</b>	<b>NAST20MZZR</b>	<b>NAST20MZZUUR</b>	20 <sup>0</sup> <sub>-0.010</sub>	<b>47</b>	20	19.8	38	3	1	17 660	22 540	13 800	4 610	8 500	195		
<b>25</b>	<b>NAST25MZZ</b>	<b>NAST25MZZUU</b>	<b>NAST25MZZR</b>	<b>NAST25MZZUUR</b>	25 <sup>0</sup> <sub>-0.010</sub>	<b>52</b>	20	19.8	43	3	1	19 040	26 120	15 300	5 290	7 000	225		
<b>30</b>	<b>NAST30MZZ</b>	<b>NAST30MZZUU</b>	<b>NAST30MZZR</b>	<b>NAST30MZZUUR</b>	30 <sup>0</sup> <sub>-0.010</sub>	<b>62</b>	25	24.8	50.5	4	1.2	27 870	41 760	22 100	6 660	5 500	400		
<b>35</b>	<b>NAST35MZZ</b>	<b>NAST35MZZUU</b>	<b>NAST35MZZR</b>	<b>NAST35MZZUUR</b>	35 <sup>0</sup> <sub>-0.012</sub>	<b>72</b>	25	24.8	53.5	4	1.2	29 620	46 550	25 700	8 130	5 000	550		
<b>40</b>	<b>NAST40MZZ</b>	<b>NAST40MZZUU</b>	<b>NAST40MZZR</b>	<b>NAST40MZZUUR</b>	40 <sup>0</sup> <sub>-0.012</sub>	<b>80</b>	26	25.8	61.5	4	1.2	32 840	56 210	30 300	9 310	4 000	710		
<b>45</b>	<b>NAST45MZZ</b>	<b>NAST45MZZUU</b>	<b>NAST45MZZR</b>	<b>NAST45MZZUUR</b>	45 <sup>0</sup> <sub>-0.012</sub>	<b>85</b>	26	25.8	66.5	4	1.2	34 130	61 080	31 100	10 100	4 000	760		
<b>50</b>	<b>NAST50MZZ</b>	<b>NAST50MZZUU</b>	<b>NAST50MZZR</b>	<b>NAST50MZZUUR</b>	50 <sup>0</sup> <sub>-0.012</sub>	<b>90</b>	26	25.8	76	4	1.2	35 600	66 050	34 000	11 000	3 500	830		

\* Without seals, suitable for grease lubrication. In case of oil lubrication, up to 130% of this value shall be permissible, and 70% of this value shall apply for types with seals.

OUTER RINGS TOLERANCE (Outside diameter) (µm)

TYPE	Cylindrical outer ring	Crowned outer ring
NAST6M,NAST8M,NAST10M	0/-9	0/-50
NAST12M,NAST15M,NAST17M,NAST20M	0/-11	0/-50
NAST25M,NAST30M,NAST35M,NAST40M	0/-13	0/-50
NAST45M,NAST50M	0/-15	0/-50

NAST..MZZ

NAST..MZZ