

BALL TRANSFER UNITS

PAGE

"SPM-SBM SUPER HEAVY DUTY" SERIES – FOR HIGH LOADS

14

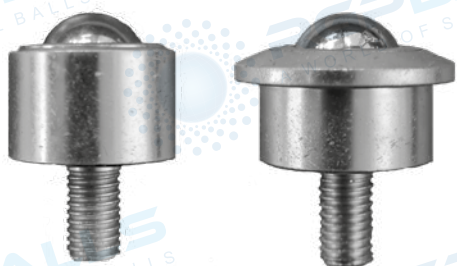


High-performance machined, case-hardened and hardened steel housing. Removable turned steel cover*, felt seal, drain hole on the bottom. Available in steel, zinc plated steel, stainless steel. Balls in chrome steel and stainless steel AISI 420.

* Except SPM 60.

"SPM-SBM" SERIES – HEAVY DUTY TYPE WITH THREADED NUT / INTERNAL THREAD

15-16



Hardened machined steel housing, threaded nut machined from solid*, cover in turned steel, no felt seal to ensure better smoothness. Available in steel, zinc plated steel, stainless steel. Balls in chrome steel, 420 stainless steel, plastic material.

* Standard size M8 x 15/20 mm. Available in other sizes upon request.



Hardened machined steel housing without flange, internal thread on the bottom for fixing with screws or threaded bars, turned steel cover, felt seal*. Available in steel, zinc plated steel, stainless steel. Balls in chrome steel, 420 stainless steel, plastic material.

* Except SBM 12, 15 and versions with plastic ball.

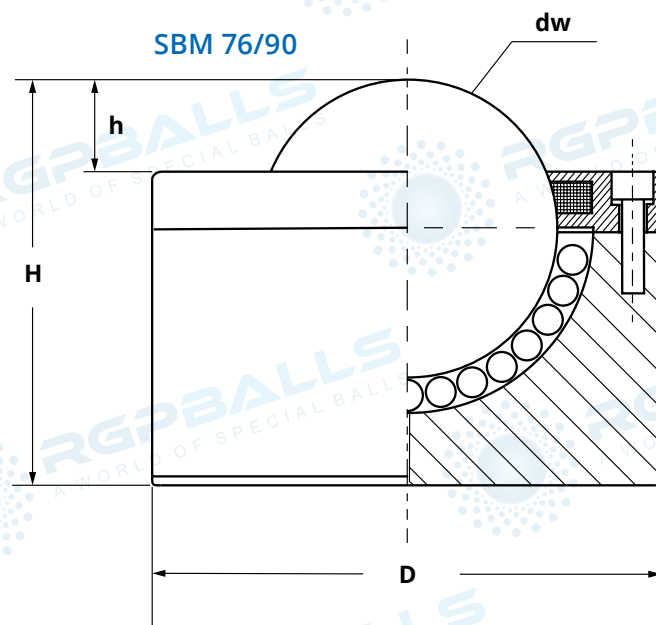
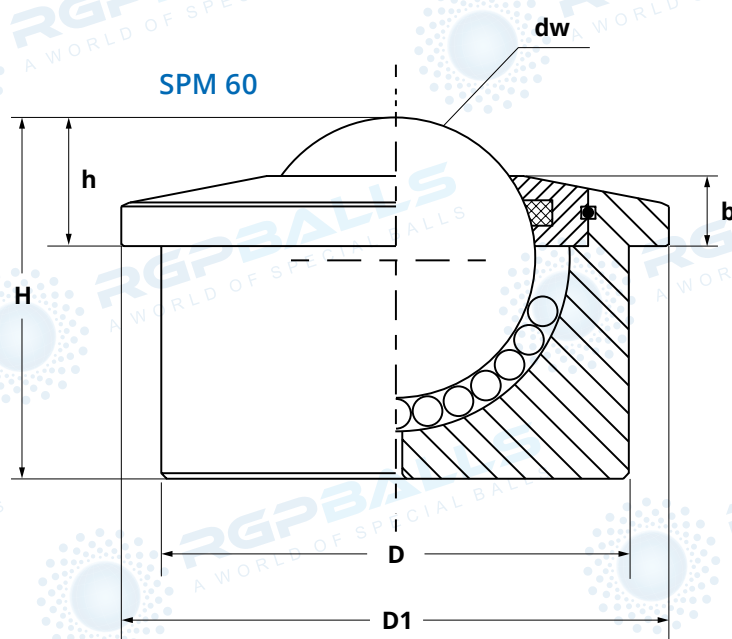
"SPM" SERIES – HEAVY DUTY TYPE WITH SPRING ELEMENT

17





External housing in turned, burnished steel. Internal unit all made of machined, hardened and zinc plated steel. Felt seal. Internal spiral spring. Available in burnished steel, stainless steel. Balls in chrome steel, AISI420 stainless steel. Fully removable.

"SPM-SBM SUPER HEAVY DUTY" SERIES – FOR HIGH LOADS



- High-performance machined, case-hardened and hardened steel housing.
- It can withstand high loads and features greater resistance to stress.
- Enforced cover in turned steel (can be removed for maintenance, except for SPM 60)
- Felt seal.
- Drain hole on the bottom.

ITEM	TYPE	VERSION	DIMENSIONS						LOAD (Kg)		WEIGHT (Kg)
			dw	D	D1	h	H	b			
SPM06000A	SPM 60 A	Steel housing, balls made of chrome steel	60	100 ± 0,1	117	30 ± 0,4	77,5	15	1500	900	4
SBM07600A	SBM 76 A		76	130 ± 0,1	-	23 ± 0,4	103	-	2500	1500	10
SBM09000A	SBM 90 A		90	145 ± 0,1	-	25 ± 0,4	115	-	3000	2000	11,250
SPM06000B	SPM 60 B	Zinc plated steel housing, balls made of chrome steel	60	100 ± 0,1	117	30 ± 0,4	77,5	15	1500	900	4
SBM07600B	SBM 76 B		76	130 ± 0,1	-	23 ± 0,4	103	-	2500	1500	10
SBM09000B	SBM 90 B		90	145 ± 0,1	-	25 ± 0,4	115	-	3000	2000	11,250
SPM06000C	SPM 60 C	Zinc plated steel housing, balls made of stainless steel AISI 420	60	100 ± 0,1	117	30 ± 0,4	77,5	15	900	600	4
SBM07600C	SBM 76 C		76	130 ± 0,1	-	23 ± 0,4	103	-	1500	900	10
SBM09000C	SBM 90 C		90	145 ± 0,1	-	25 ± 0,4	115	-	1800	1200	11,250
SPM06000SS	SPM 60 SS	Housing, internal parts and balls made of stainless steel AISI 420	60	100 ± 0,1	117	30 ± 0,4	77,5	15	900	600	4
SBM07600SS	SBM 76 SS		76	130 ± 0,1	-	23 ± 0,4	103	-	1500	900	10
SBM09000SS	SBM 90 SS		90	145 ± 0,1	-	25 ± 0,4	115	-	1800	1200	11,250