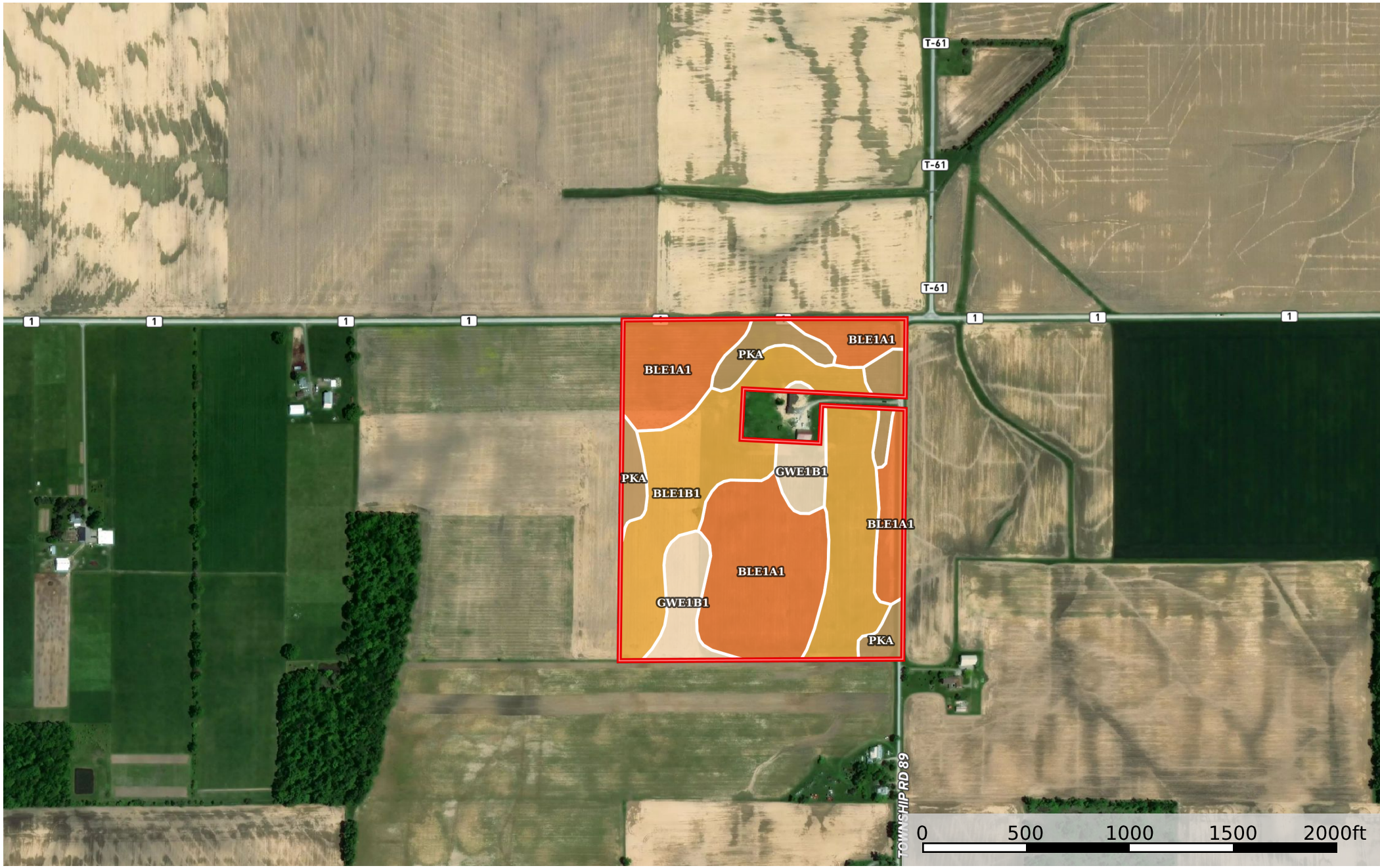


# 48 Acres Hardin County Washington Township Ohio, AC +/-



 Boundary

Boundary 48.75 ac

SOIL CODE	SOIL DESCRIPTION	ACRES	%	CPI	NCCPI	CAP
Ble1A1	Blount silt loam, end moraine, 0 to 2 percent slopes	20.38	41.81	0	69	2w
Ble1B1	Blount silt loam, end moraine, 2 to 4 percent slopes	18.44	37.83	0	67	2e
PkA	Pewamo silty clay loam, 0 to 1 percent slopes	5.21	10.69	0	76	2w
Gwe1B1	Glynwood silt loam, end moraine, 2 to 6 percent slopes	4.72	9.68	0	66	2e
TOTALS		48.75(*)	100%	-	68.7	2.0

(\*) Total acres may differ in the second decimal compared to the sum of each acreage soil. This is due to a round error because we only show the acres of each soil with two decimal.

