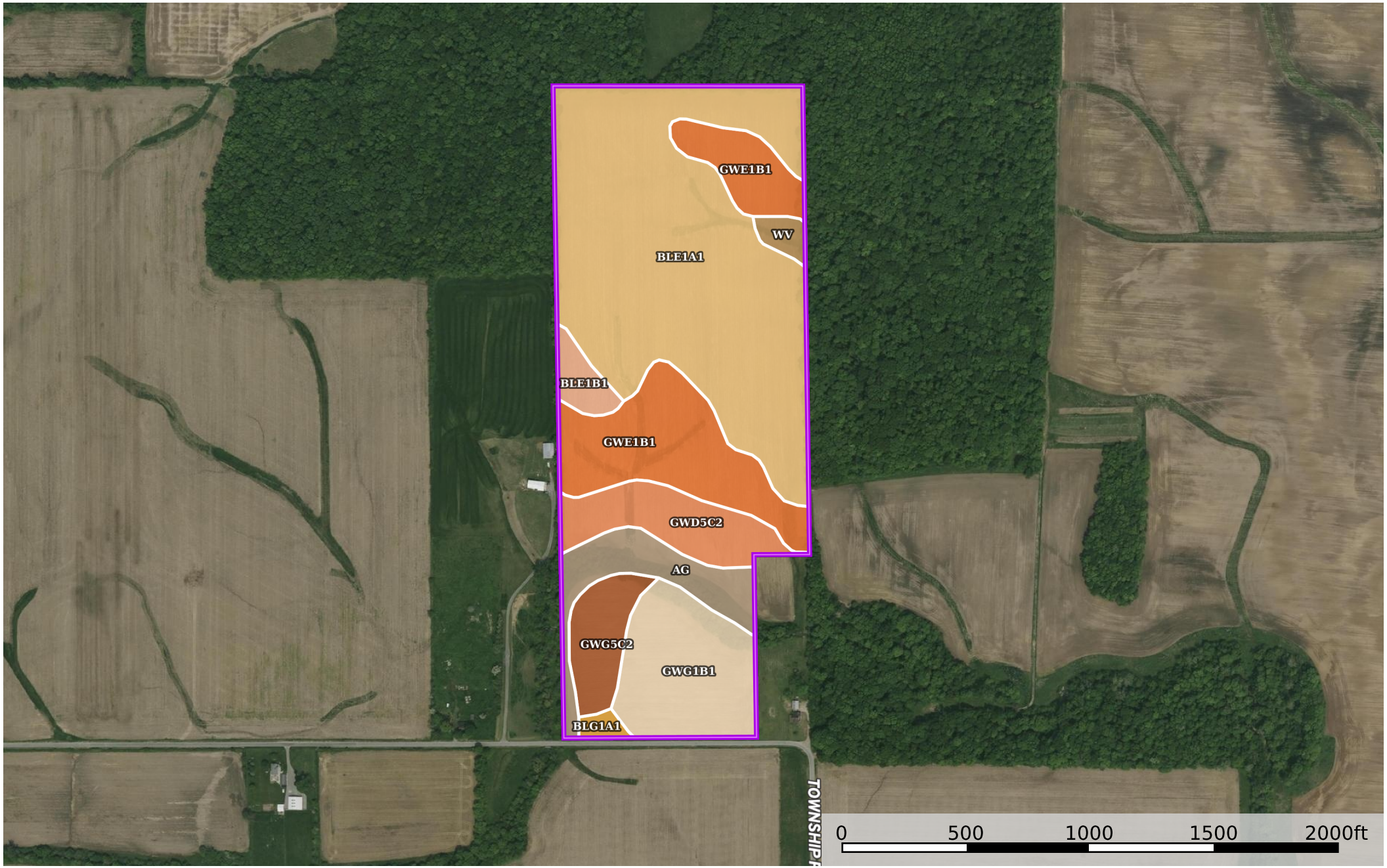


57 Acres Logan County - Vogel

Ohio, AC +/-



Boundary

Boundary 56.54 ac

SOIL CODE	SOIL DESCRIPTION	ACRES	%	CPI	NCCPI	CAP
Ble1A1	Blount silt loam, end moraine, 0 to 2 percent slopes	26.61	47.06	0	69	2w
Gwe1B1	Glynwood silt loam, end moraine, 2 to 6 percent slopes	10.29	18.2	0	66	2e
Gwg1B1	Glynwood silt loam, ground moraine, 2 to 6 percent slopes	6.66	11.78	0	67	2e
Gwd5C2	Glynwood clay loam, 6 to 12 percent slopes, eroded	4.22	7.46	63	56	4e
Ag	Algiers silt loam	3.82	6.76	0	72	2w
Gwg5C2	Glynwood clay loam, ground moraine, 6 to 12 percent slopes, eroded	2.7	4.78	65	56	3e
Ble1B1	Blount silt loam, end moraine, 2 to 4 percent slopes	1.18	2.09	0	67	2e
Wv	Wetzel silty clay loam	0.65	1.15	0	86	2w
Blg1A1	Blount silt loam, ground moraine, 0 to 2 percent slopes	0.41	0.73	0	69	2w
TOTALS		56.54(*)	100%	7.81	66.98	2.2

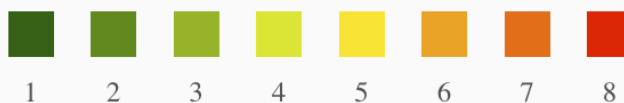
(*) Total acres may differ in the second decimal compared to the sum of each acreage soil. This is due to a round error because we only show the acres of each soil with two decimal.

Capability Legend

Increased Limitations and Hazards

Decreased Adaptability and Freedom of Choice Users

Land, Capability



'Wild Life'	•	•	•	•	•	•	•
Forestry	•	•	•	•	•	•	
Limited	•	•	•	•	•	•	
Moderate	•	•	•	•	•		
Intense	•	•	•	•	•		
Limited	•	•	•	•			
Moderate	•	•	•				
Intense	•	•					
Very Intense	•						

Grazing Cultivation

(c) climatic limitations (e) susceptibility to erosion

(s) soil limitations within the rooting zone (w) excess of water