



Customer: Hall County
 Sales Rep: Benjamin Frank
 bfrank@impactofficeinteriors.com

Proposal

2022-1907
 12/19/2022

Propose To:
 Hall County
 2875 Browns Bridge Rd
 Gainesville, GA 30504

Shipping Location:
 Southern Office Installation
 4301 Pleasantdale Rd
 Suite A
 Doraville, GA 30340

Installation Location:
 Pre Trial
 1195 Jesse Jewell Pkwy
 Gainesville, GA 30501

Attention: Katie Crumley
 770.297.5504 (phone)
 Kcrumley@hallcounty.org

Pre Trial Building

| Item No. | Item Description | Qty | Item Sell | Ext Sell |
|-------------------------|---|-----|------------|------------|
| Line: 1 01-CVAULTG2A | Indiana Furniture Conference Table Power & Data Vault Tag1: CONFERENCE 101 | 2 | \$660.82 | \$1,321.64 |
| Line: 2 01-1220RBD | Indiana Furniture Rectangular Box Base with Door Tag1: CONFERENCE 101 Item Finishes & Options: : Studio Teak (TK) | 3 | \$223.72 | \$671.16 |
| Line: 3 94-48168RT | Indiana Furniture Rectangular Top Tag1: CONFERENCE 101 Item Finishes & Options: : Studio Teak (TK) : Square (Y) | 1 | \$1,517.16 | \$1,517.16 |
| Line: 4 94-2472BF | Indiana Furniture Buffet 4dr, 2drw Tag1: CONFERENCE 101 Item Finishes & Options: : Studio Teak (TK) : Square (Y) : Studio Teak (TK) : Studio Teak (TK) : Aluminum Beam Pull (ABM) | 1 | \$2,001.73 | \$2,001.73 |



Customer: Hall County
 Sales Rep: Benjamin Frank
 bfrank@impactofficeinteriors.com

Proposal

2022-1907
 12/19/2022

| Item No. | Item Description | Qty | Item Sell | Ext Sell |
|-----------------------|--|-----|------------|------------|
| Line: 5 410-1818ET | Indiana Furniture 18x18x20h Square End Table Tag1: LOBBY 118 Item Finishes & Options: : Laminate Top (T) : Studio Teak (TK) : Aluminum Powder Coat (A) | 1 | \$406.08 | \$406.08 |
| Line: 6 410-2248MT | Indiana Furniture 22x48x15h Rectangular Cocktail Table Tag1: LOBBY 118 Item Finishes & Options: : Laminate Top (T) : Studio Teak (TK) : Aluminum Powder Coat (A) | 1 | \$496.79 | \$496.79 |
| Line: 7 377 | Indiana Furniture Bliss Guest Chair w/ Task Arm Tag1: LOBBY 118 Item Finishes & Options: : One Upholstery ((ONE)) : Grade 6 ((GRD6)) : Enter Approved Fabric Selection (OTHER) : ARC COM APOLLO- ICE BLUE #6 (TOR) : No Power Port (NONE) : No Writing Tablet (~) : Wood Arm Cap (WCAP) : Studio Teak (TK) : Chrome Leg (CLEG) | 4 | \$1,400.13 | \$5,600.52 |
| Line: 8 3773 | Indiana Furniture Bliss Sofa w/ Task Arm Tag1: LOBBY 118 Item Finishes & Options: : One Upholstery ((ONE)) : Grade 6 ((GRD6)) : Enter Approved Fabric Selection (OTHER) | 1 | \$2,176.57 | \$2,176.57 |



Customer: Hall County
 Sales Rep: Benjamin Frank
 bfrank@impactofficeinteriors.com

Proposal

2022-1907
 12/19/2022

| Item No. | Item Description | Qty | Item Sell | Ext Sell |
|-------------------------|--|-----|------------|------------|
| | : ARC COM APOLLO- ICE BLUE #6 (TOR) : No Power Port (NONE) : No Writing Tablet (~) : Wood Arm Cap (WCAP) : Studio Teak (TK) : Chrome Leg (CLEG) | | | |
| Line: 9 66-2448UFSTS | Indiana Furniture 24"Dx48"W Height Adjustable Bridge Unit Tag1: OFFICE 104 Item Finishes & Options: : HIGH PRESSURE LAMINATE (P) : STUDIO TEAK (TK) : SQUARE (Y) : STUDIO TEAK (TK) : STANDARD SWITCH, DPG1K (SWCH) : NO GROMMET/PORT SPECIFIED (NO WM) : NO GROMMET IN BACK PANEL (NO) : BLACK GROMMET (GMBBL) | 1 | \$1,640.77 | \$1,640.77 |
| Line: 10 68-3072RP | Indiana Furniture Right Ped Desk, 30D x 72W Tag1: OFFICE 104 Item Finishes & Options: : High Pressure Laminate (P) : Studio Teak (TK) : Square (Y) : Studio Teak (TK) : Studio Teak (TK) : Vertical Grain Direction Drawer Fronts (VERTICAL) : Wood Dovetail Drawer Box Construction (WOOD) : Standard Drawer Tracks (STD) : Aluminum Beam (ABM) : No Selection Grommet Options (~) | 1 | \$985.59 | \$985.59 |
| Line: 11 68-2472LC2 | Indiana Furniture Single Left Ped Credenza, 24D x 72W Tag1: OFFICE 104 Item Finishes & Options: : High Pressure Laminate (P) : Studio Teak (TK) : Square (Y) | 1 | \$815.45 | \$815.45 |



Customer: Hall County
 Sales Rep: Benjamin Frank
 bfrank@impactofficeinteriors.com

Proposal

2022-1907
 12/19/2022

| Item No. | Item Description | Qty | Item Sell | Ext Sell |
|--------------------------|--|-----|------------|------------|
| | <ul style="list-style-type: none"> : Studio Teak (TK) : Studio Teak (TK) : Vertical Grain Direction Drawer Fronts (VERTICAL) : Wood Dovetail Drawer Box Construction (WOOD) : Standard Drawer Tracks (STD) : Aluminum Beam (ABM) : No Worksurface Grommet Selection (~) : Standard Grommet in Back Panel/Modesty (MOD-GRMT) : Black Grommet (BLK) | | | |
| Line: 12 66-2448UFSTS | Indiana Furniture 24"Dx48"W Height Adjustable Bridge Unit Tag1: OFFICE 105 Item Finishes & Options: <ul style="list-style-type: none"> : High Pressure Laminate (P) : Studio Teak (TK) : Square (Y) : Studio Teak (TK) : Standard Switch, DPG1K (SWCH) : No Grommet/Port Specified (NO WM) : No Grommet in Back Panel (NO) : Black Grommet (GMBBL) | 1 | \$1,640.77 | \$1,640.77 |
| Line: 13 68-3072RP | Indiana Furniture Right Ped Desk, 30D x 72W Tag1: OFFICE 105 Item Finishes & Options: <ul style="list-style-type: none"> : High Pressure Laminate (P) : Studio Teak (TK) : Square (Y) : Studio Teak (TK) : Studio Teak (TK) : Vertical Grain Direction Drawer Fronts (VERTICAL) : Wood Dovetail Drawer Box Construction (WOOD) : Standard Drawer Tracks (STD) : Aluminum Beam (ABM) : No Selection Grommet Options (~) | 1 | \$985.59 | \$985.59 |
| Line: 14 68-2472LC2 | Indiana Furniture Single Left Ped Credenza, 24D x 72W Tag1: OFFICE 105 Item Finishes & Options: | 1 | \$815.45 | \$815.45 |



Customer: Hall County
 Sales Rep: Benjamin Frank
 bfrank@impactofficeinteriors.com

Proposal

2022-1907
 12/19/2022

| Item No. | Item Description | Qty | Item Sell | Ext Sell |
|--------------------------|---|-----|------------|------------|
| | <ul style="list-style-type: none"> : High Pressure Laminate (P) : Studio Teak (TK) : Square (Y) : Studio Teak (TK) : Studio Teak (TK) : Vertical Grain Direction Drawer Fronts (VERTICAL) : Wood Dovetail Drawer Box Construction (WOOD) : Standard Drawer Tracks (STD) : Aluminum Beam (ABM) : No Worksurface Grommet Selection (~) : Standard Grommet in Back Panel/Modesty (MOD-GRMT) : Black Grommet (BLK) | | | |
| Line: 15 66-2448UFSTS | Indiana Furniture 24"Dx48"W Height Adjustable Bridge Unit Tag1: OFFICE 106 Item Finishes & Options: <ul style="list-style-type: none"> : High Pressure Laminate (P) : Studio Teak (TK) : Square (Y) : Studio Teak (TK) : Standard Switch, DPG1K (SWCH) : No Grommet/Port Specified (NO WM) : No Grommet in Back Panel (NO) : Black Grommet (GMBBL) | 1 | \$1,640.77 | \$1,640.77 |
| Line: 16 68-3072LP | Indiana Furniture Left Ped Desk, 30D x 72W Tag1: OFFICE 106 Item Finishes & Options: <ul style="list-style-type: none"> : High Pressure Laminate (P) : Studio Teak (TK) : Square (Y) : Studio Teak (TK) : Studio Teak (TK) : Vertical Grain Direction Drawer Fronts (VERTICAL) : Wood Dovetail Drawer Box Construction (WOOD) : Standard Drawer Tracks (STD) : Aluminum Beam (ABM) : No Selection Grommet Options (~) | 1 | \$985.59 | \$985.59 |
| Line: 17 68-2472RC2 | Indiana Furniture Single Right Ped Credenza, 24D x 72W | 1 | \$815.45 | \$815.45 |



Customer: Hall County
 Sales Rep: Benjamin Frank
 bfrank@impactofficeinteriors.com

Proposal

2022-1907
 12/19/2022

| Item No. | Item Description | Qty | Item Sell | Ext Sell |
|--------------------------|--|-----|------------|------------|
| | Tag1: OFFICE 106 Item Finishes & Options: : High Pressure Laminate (P) : Studio Teak (TK) : Square (Y) : Studio Teak (TK) : Studio Teak (TK) : Vertical Grain Direction Drawer Fronts (VERTICAL) : Wood Dovetail Drawer Box Construction (WOOD) : Standard Drawer Tracks (STD) : Aluminum Beam (ABM) : No Worksurface Grommet Selection (~) : Standard Grommet in Back Panel/Modesty (MOD-GRMT) : Black Grommet (BLK) | | | |
| Line: 18 66-2442UFSTS | Indiana Furniture 24"Dx42"W Height Adjustable Bridge Unit Tag1: OFFICE 111 Item Finishes & Options: : High Pressure Laminate (P) : Studio Teak (TK) : Square (Y) : Studio Teak (TK) : Standard Switch, DPG1K (SWCH) : No Grommet/Port Specified (NO WM) : No Grommet in Back Panel (NO) : Black Grommet (GMBBL) | 1 | \$1,625.26 | \$1,625.26 |
| Line: 19 68-3072LP | Indiana Furniture Left Ped Desk, 30D x 72W Tag1: OFFICE 111 Item Finishes & Options: : High Pressure Laminate (P) : Studio Teak (TK) : Square (Y) : Studio Teak (TK) : Studio Teak (TK) : Vertical Grain Direction Drawer Fronts (VERTICAL) : Wood Dovetail Drawer Box Construction (WOOD) : Standard Drawer Tracks (STD) : Aluminum Beam (ABM) : No Selection Grommet Options (~) | 1 | \$985.59 | \$985.59 |
| Line: 20 | Indiana Furniture | 1 | \$815.45 | \$815.45 |



Customer: Hall County
 Sales Rep: Benjamin Frank
 bfrank@impactofficeinteriors.com

Proposal

2022-1907
 12/19/2022

| Item No. | Item Description | Qty | Item Sell | Ext Sell |
|--------------|--|-----|------------|------------|
| 68-2472RC2 | Single Right Ped Credenza, 24D x 72W Tag1: OFFICE 111 Item Finishes & Options: : High Pressure Laminate (P) : Studio Teak (TK) : Square (Y) : Studio Teak (TK) : Studio Teak (TK) : Vertical Grain Direction Drawer Fronts (VERTICAL) : Wood Dovetail Drawer Box Construction (WOOD) : Standard Drawer Tracks (STD) : Aluminum Beam (ABM) : No Worksurface Grommet Selection (~) : Standard Grommet in Back Panel/Modesty (MOD-GRMT) : Black Grommet (BLK) | | | |
| Line: 21 | Indiana Furniture | 1 | \$1,640.77 | \$1,640.77 |
| 66-2448UFSTS | 24"Dx48"W Height Adjustable Bridge Unit Tag1: OFFICE 112 Item Finishes & Options: : High Pressure Laminate (P) : Studio Teak (TK) : Square (Y) : Studio Teak (TK) : Standard Switch, DPG1K (SWCH) : No Grommet/Port Specified (NO WM) : No Grommet in Back Panel (NO) : Black Grommet (GMBBL) | | | |
| Line: 22 | Indiana Furniture | 1 | \$985.59 | \$985.59 |
| 68-3072RP | Right Ped Desk, 30D x 72W Tag1: OFFICE 112 Item Finishes & Options: : High Pressure Laminate (P) : Studio Teak (TK) : Square (Y) : Studio Teak (TK) : Studio Teak (TK) : Vertical Grain Direction Drawer Fronts (VERTICAL) : Wood Dovetail Drawer Box Construction (WOOD) : Standard Drawer Tracks (STD) : Aluminum Beam (ABM) : No Selection Grommet Options (~) | | | |



Customer: Hall County
 Sales Rep: Benjamin Frank
 bfrank@impactofficeinteriors.com

Proposal

2022-1907
 12/19/2022

| Item No. | Item Description | Qty | Item Sell | Ext Sell |
|--------------------------|--|-----|------------|------------|
| Line: 23 68-2472LC2 | Indiana Furniture Single Left Ped Credenza, 24D x 72W Tag1: OFFICE 112 Item Finishes & Options: : High Pressure Laminate (P) : Studio Teak (TK) : Square (Y) : Studio Teak (TK) : Studio Teak (TK) : Vertical Grain Direction Drawer Fronts (VERTICAL) : Wood Dovetail Drawer Box Construction (WOOD) : Standard Drawer Tracks (STD) : Aluminum Beam (ABM) : No Worksurface Grommet Selection (~) : Standard Grommet in Back Panel/Modesty (MOD-GRMT) : Black Grommet (BLK) | 1 | \$815.45 | \$815.45 |
| Line: 24 66-2448UFSTS | Indiana Furniture 24"Dx48"W Height Adjustable Bridge Unit Tag1: OFFICE 113 Item Finishes & Options: : High Pressure Laminate (P) : Studio Teak (TK) : Square (Y) : Studio Teak (TK) : Standard Switch, DPG1K (SWCH) : No Grommet/Port Specified (NO WM) : No Grommet in Back Panel (NO) : Black Grommet (GMBBL) | 1 | \$1,640.77 | \$1,640.77 |
| Line: 25 68-3072LP | Indiana Furniture Left Ped Desk, 30D x 72W Tag1: OFFICE 113 Item Finishes & Options: : High Pressure Laminate (P) : Studio Teak (TK) : Square (Y) : Studio Teak (TK) : Studio Teak (TK) : Vertical Grain Direction Drawer Fronts (VERTICAL) : Wood Dovetail Drawer Box Construction (WOOD) | 1 | \$985.59 | \$985.59 |



Customer: Hall County
 Sales Rep: Benjamin Frank
 bfrank@impactofficeinteriors.com

Proposal

2022-1907
 12/19/2022

| Item No. | Item Description | Qty | Item Sell | Ext Sell |
|--------------------------|---|-----|------------|------------|
| | : Standard Drawer Tracks (STD) : Aluminum Beam (ABM) : No Selection Grommet Options (~) | | | |
| Line: 26 68-2472RC2 | Indiana Furniture Single Right Ped Credenza, 24D x 72W Tag1: OFFICE 113 Item Finishes & Options: : High Pressure Laminate (P) : Studio Teak (TK) : Square (Y) : Studio Teak (TK) : Studio Teak (TK) : Vertical Grain Direction Drawer Fronts (VERTICAL) : Wood Dovetail Drawer Box Construction (WOOD) : Standard Drawer Tracks (STD) : Aluminum Beam (ABM) : No Worksurface Grommet Selection (~) : Standard Grommet in Back Panel/Modesty (MOD-GRMT) : Black Grommet (BLK) | 1 | \$815.45 | \$815.45 |
| Line: 27 66-2448UFSTS | Indiana Furniture 24"Dx48"W Height Adjustable Bridge Unit Tag1: OFFICE 114 Item Finishes & Options: : High Pressure Laminate (P) : Studio Teak (TK) : Square (Y) : Studio Teak (TK) : Standard Switch, DPG1K (SWCH) : No Grommet/Port Specified (NO WM) : No Grommet in Back Panel (NO) : Black Grommet (GMBBL) | 1 | \$1,640.77 | \$1,640.77 |
| Line: 28 68-3072LP | Indiana Furniture Left Ped Desk, 30D x 72W Tag1: OFFICE 114 Item Finishes & Options: : High Pressure Laminate (P) : Studio Teak (TK) : Square (Y) : Studio Teak (TK) | 1 | \$985.59 | \$985.59 |



Customer: Hall County
 Sales Rep: Benjamin Frank
 bfrank@impactofficeinteriors.com

Proposal

2022-1907
 12/19/2022

| Item No. | Item Description | Qty | Item Sell | Ext Sell |
|--------------------------|---|-----|------------|------------|
| | <ul style="list-style-type: none"> : Studio Teak (TK) : Vertical Grain Direction Drawer Fronts (VERTICAL) : Wood Dovetail Drawer Box Construction (WOOD) : Standard Drawer Tracks (STD) : Aluminum Beam (ABM) : No Selection Grommet Options (~) | | | |
| Line: 29 68-2472RC2 | Indiana Furniture Single Right Ped Credenza, 24D x 72W Tag1: OFFICE 114 Item Finishes & Options: <ul style="list-style-type: none"> : High Pressure Laminate (P) : Studio Teak (TK) : Square (Y) : Studio Teak (TK) : Studio Teak (TK) : Vertical Grain Direction Drawer Fronts (VERTICAL) : Wood Dovetail Drawer Box Construction (WOOD) : Standard Drawer Tracks (STD) : Aluminum Beam (ABM) : No Worksurface Grommet Selection (~) : Standard Grommet in Back Panel/Modesty (MOD-GRMT) : Black Grommet (BLK) | 1 | \$815.45 | \$815.45 |
| Line: 30 66-2448UFSTS | Indiana Furniture 24"Dx48"W Height Adjustable Bridge Unit Tag1: OFFICE 115 Item Finishes & Options: <ul style="list-style-type: none"> : High Pressure Laminate (P) : Studio Teak (TK) : Square (Y) : Studio Teak (TK) : Standard Switch, DPG1K (SWCH) : No Grommet/Port Specified (NO WM) : No Grommet in Back Panel (NO) : Black Grommet (GMBBL) | 1 | \$1,640.77 | \$1,640.77 |
| Line: 31 68-3072LP | Indiana Furniture Left Ped Desk, 30D x 72W Tag1: OFFICE 115 Item Finishes & Options: <ul style="list-style-type: none"> : High Pressure Laminate (P) | 1 | \$985.59 | \$985.59 |



Customer: Hall County
 Sales Rep: Benjamin Frank
 bfrank@impactofficeinteriors.com

Proposal

2022-1907
 12/19/2022

| Item No. | Item Description | Qty | Item Sell | Ext Sell |
|------------------------|---|-----|-----------|-------------|
| | <ul style="list-style-type: none"> : Studio Teak (TK) : Square (Y) : Studio Teak (TK) : Studio Teak (TK) : Vertical Grain Direction Drawer Fronts (VERTICAL) : Wood Dovetail Drawer Box Construction (WOOD) : Standard Drawer Tracks (STD) : Aluminum Beam (ABM) : No Selection Grommet Options (~) | | | |
| Line: 32 68-2472RC2 | <p>Indiana Furniture</p> <p>Single Right Ped Credenza, 24D x 72W</p> <p>Tag1: OFFICE 115</p> <p>Item Finishes & Options:</p> <ul style="list-style-type: none"> : High Pressure Laminate (P) : Studio Teak (TK) : Square (Y) : Studio Teak (TK) : Studio Teak (TK) : Vertical Grain Direction Drawer Fronts (VERTICAL) : Wood Dovetail Drawer Box Construction (WOOD) : Standard Drawer Tracks (STD) : Aluminum Beam (ABM) : No Worksurface Grommet Selection (~) : Standard Grommet in Back Panel/Modesty (MOD-GRMT) : Black Grommet (BLK) | 1 | \$815.45 | \$815.45 |
| Line: 33 BU7511D | <p>JSI Bourne</p> <p>Bourne Guest Chair - Single Textile</p> <p>Tag1: (2) PER OFFICE</p> <p>Item Finishes & Options:</p> <p>Fabric Grade Selection : Grade F (F)</p> <p>Grade F Fabric Manufacturer Selection : ArcCom Fabric (ArcCom)</p> <p>Arc Com Grade F Fabrics : Apollo (Apollo)</p> <p>User specified entry : 6 (63355 Ice Blue #)</p> <p>Wood Species : Maple Wood Species (Standard) (M)</p> <p>Maple Wood Finish Selection : Studio Teak Coordinate (CST)</p> <p>Glides : Metal Leveling Glides (Standard) (MTG)</p> | 16 | \$864.00 | \$13,824.00 |
| Line: 34 OTG11734B | <p>Offices to Go</p> <p>Luxhide Uph. w/ Mock Leather Trim, Mid Back, Single Position Tilt Lock w/ Tilt Tension Adj., Fixed Height Arms (Polished Alum), Pneu Seat Height Adj., Chrome Plated Steel Base, Dual</p> | 12 | \$387.04 | \$4,644.48 |



Customer: Hall County
 Sales Rep: Benjamin Frank
 bfrank@impactofficeinteriors.com

Proposal

2022-1907
 12/19/2022

| Item No. | Item Description | Qty | Item Sell | Ext Sell |
|--------------------------------------|---|-----|-----------|------------|
| | Wheel Carpet Tag1: CONF CHAIRS Item Finishes & Options: ^Luxhide + Fabric Seating Textiles : Stocked Luxhide Textile (PU30/BL20 - Black) (~STO) Stocked Black Luxhide Textile : 1-Black (PU30/BL20) (PU30/BL20) | | | |
| Line: 35 1073.BK2.MB.Y/E3.AR6 | Sit On It Seating Vectra Highback Mesh with Adjustable Lumbar Support, Enhanced Synchro w/ Seat Depth, Height/Width Adjustable Tag1: (1) PER OFFICE Tag2: 2 for receptions Item Finishes & Options: Accent Color Selection : Fog (LA4) Cylinder Height Option : Standard Cylinder (CH1) Frame Colors : Fog Frame (FC13) Base Selection : Fog Nylon Base (B21) Caster Selecton : Carpet Casters (CS5) Vectra Mesh Back Colors : Nickel Mesh (MC6) Fabric or Leather Upholstery Selection : Fabric Grade Selections (FABRIC) Fabric Grade Selections : Fabric Grade 3 (FG3) Fabric Grade 3 Selection : Affinity Standard Color Selection (AFFINITY) Affinity Color Selections : Affinity Stone (STONE) Packaging Options : Knocked Down (KD) | 10 | \$439.04 | \$4,390.40 |
| Line: 36 PSLAT436W | Trendway Pack Files & Storage PACK LAT FILE 4-HIGH W/TOP & CNTR BALANCE WGHT, 36W Tag1: (1) PER OFFICE Item Finishes & Options: PULL STYLE : BEVEL PULL (.B) TRIM COLOR GROUP : TEXTURED TRIM COLORS (.T2) TEXTURED TRIM COLOR : TEXTURED SAND (.TY) LOCK OPTION - SILVER LOCK : RANDOM (.R) | 8 | \$913.60 | \$7,308.80 |

Misc Items.....\$71,878.30



Customer: Hall County
Sales Rep: Benjamin Frank
bfrank@impactofficeinteriors.com

Proposal
2022-1907
12/19/2022

Subtotal.....\$71,878.30
Total Amount.....\$71,878.30



Customer: Hall County
Sales Rep: Benjamin Frank
bfrank@impactofficeinteriors.com

Proposal

2022-1907
12/19/2022

Please issue purchase order #1, in the amount of \$41,710.62 to:

Indiana Furniture
C/O Impact Office Interiors, Inc.
1224 Mill Street
P.O. Box 270
Jasper, IN 47547-0270
800-422-5727 (phone)
812-482-9035 (fax)

Please issue purchase order #2, in the amount of \$13,824.00 to:

JSI
C/O Impact Office Interiors, Inc.
225 S. Clay Street
Jasper, IN 47546
800-457-4511 (phone)
812-482-1548 (fax)

Please issue purchase order #3, in the amount of \$4,644.48 to:

Global Furniture Group
C/O Impact Office Interiors, Inc.
P.O. Box 970
Marlton, NJ 08053
678-602-4130 (phone)
678-602-4136 (fax)

Please issue purchase order #4, in the amount of \$4,390.40 to:

Sit On It
C/O Impact Office Interiors, Inc.
25090 Network Place
Chicago, IL 60673-1250

Please issue purchase order #5, in the amount of \$7,308.80 to:

Trendway
C/O Impact Office Interiors, Inc.
P.O. Box 776195
Chicago, IL 60677-6195
800-748-0234 (phone)

I agree to purchase all items listed on these pages. I certify that all finishes, fabrics and/or materials specified are correct and the prices listed are agreed upon.

I understand that orders may not be canceled or changed after 3 business days. All furniture items are considered "special order" and are non-returnable and non-refundable.

Credit Card Payments are subject to a 3% surcharge.



Customer: Hall County
Sales Rep: Benjamin Frank
bfrank@impactofficeinteriors.com

Proposal

2022-1907
12/19/2022

A deposit of 50.00% (\$35,939.15) is required to place an order for this proposal.

Accepted by: _____ Date: _____



Customer: Hall County
 Sales Rep: Benjamin Frank
 bfrank@impactofficeinteriors.com

Proposal

2022-1907
 12/19/2022

Propose To:
 Hall County
 2875 Browns Bridge Rd
 Gainesville, GA 30504

Shipping Location:
 Southern Office Installation
 4301 Pleasantdale Rd
 Suite A
 Doraville, GA 30340

Installation Location:
 Pre Trial
 1195 Jesse Jewell Pkwy
 Gainesville, GA 30501

Attention: Katie Crumley
 770.297.5504 (phone)
 Kcrumley@hallcounty.org

Pre Trial Building

| Item No. | Item Description | Qty | Item Sell | Ext Sell |
|-------------------------|---|-----|------------|------------|
| Line: 1 01-CVAULTG2A | Indiana Furniture Conference Table Power & Data Vault Tag1: CONFERENCE 101 | 2 | \$660.82 | \$1,321.64 |
| Line: 2 01-1220RBD | Indiana Furniture Rectangular Box Base with Door Tag1: CONFERENCE 101 Item Finishes & Options: : Studio Teak (TK) | 3 | \$223.72 | \$671.16 |
| Line: 3 94-48168RT | Indiana Furniture Rectangular Top Tag1: CONFERENCE 101 Item Finishes & Options: : Studio Teak (TK) : Square (Y) | 1 | \$1,517.16 | \$1,517.16 |
| Line: 4 94-2472BF | Indiana Furniture Buffet 4dr, 2drw Tag1: CONFERENCE 101 Item Finishes & Options: : Studio Teak (TK) : Square (Y) : Studio Teak (TK) : Studio Teak (TK) : Aluminum Beam Pull (ABM) | 1 | \$2,001.73 | \$2,001.73 |



Customer: Hall County
 Sales Rep: Benjamin Frank
 bfrank@impactofficeinteriors.com

Proposal

2022-1907
 12/19/2022

| Item No. | Item Description | Qty | Item Sell | Ext Sell |
|-----------------------|--|-----|------------|------------|
| Line: 5 410-1818ET | Indiana Furniture 18x18x20h Square End Table Tag1: LOBBY 118 Item Finishes & Options: : Laminate Top (T) : Studio Teak (TK) : Aluminum Powder Coat (A) | 1 | \$406.08 | \$406.08 |
| Line: 6 410-2248MT | Indiana Furniture 22x48x15h Rectangular Cocktail Table Tag1: LOBBY 118 Item Finishes & Options: : Laminate Top (T) : Studio Teak (TK) : Aluminum Powder Coat (A) | 1 | \$496.79 | \$496.79 |
| Line: 7 377 | Indiana Furniture Bliss Guest Chair w/ Task Arm Tag1: LOBBY 118 Item Finishes & Options: : One Upholstery ((ONE)) : Grade 6 ((GRD6)) : Enter Approved Fabric Selection (OTHER) : ARC COM APOLLO- ICE BLUE #6 (TOR) : No Power Port (NONE) : No Writing Tablet (~) : Wood Arm Cap (WCAP) : Studio Teak (TK) : Chrome Leg (CLEG) | 4 | \$1,400.13 | \$5,600.52 |
| Line: 8 3773 | Indiana Furniture Bliss Sofa w/ Task Arm Tag1: LOBBY 118 Item Finishes & Options: : One Upholstery ((ONE)) : Grade 6 ((GRD6)) : Enter Approved Fabric Selection (OTHER) | 1 | \$2,176.57 | \$2,176.57 |



Customer: Hall County
 Sales Rep: Benjamin Frank
 bfrank@impactofficeinteriors.com

Proposal

2022-1907
 12/19/2022

| Item No. | Item Description | Qty | Item Sell | Ext Sell |
|-------------------------|--|-----|------------|------------|
| | : ARC COM APOLLO- ICE BLUE #6 (TOR) : No Power Port (NONE) : No Writing Tablet (~) : Wood Arm Cap (WCAP) : Studio Teak (TK) : Chrome Leg (CLEG) | | | |
| Line: 9 66-2448UFSTS | Indiana Furniture 24"Dx48"W Height Adjustable Bridge Unit Tag1: OFFICE 104 Item Finishes & Options: : HIGH PRESSURE LAMINATE (P) : STUDIO TEAK (TK) : SQUARE (Y) : STUDIO TEAK (TK) : STANDARD SWITCH, DPG1K (SWCH) : NO GROMMET/PORT SPECIFIED (NO WM) : NO GROMMET IN BACK PANEL (NO) : BLACK GROMMET (GMBBL) | 1 | \$1,640.77 | \$1,640.77 |
| Line: 10 68-3072RP | Indiana Furniture Right Ped Desk, 30D x 72W Tag1: OFFICE 104 Item Finishes & Options: : High Pressure Laminate (P) : Studio Teak (TK) : Square (Y) : Studio Teak (TK) : Studio Teak (TK) : Vertical Grain Direction Drawer Fronts (VERTICAL) : Wood Dovetail Drawer Box Construction (WOOD) : Standard Drawer Tracks (STD) : Aluminum Beam (ABM) : No Selection Grommet Options (~) | 1 | \$985.59 | \$985.59 |
| Line: 11 68-2472LC2 | Indiana Furniture Single Left Ped Credenza, 24D x 72W Tag1: OFFICE 104 Item Finishes & Options: : High Pressure Laminate (P) : Studio Teak (TK) : Square (Y) | 1 | \$815.45 | \$815.45 |



Customer: Hall County
 Sales Rep: Benjamin Frank
 bfrank@impactofficeinteriors.com

Proposal
 2022-1907
 12/19/2022

| Item No. | Item Description | Qty | Item Sell | Ext Sell |
|--------------------------|--|-----|------------|------------|
| | <ul style="list-style-type: none"> : Studio Teak (TK) : Studio Teak (TK) : Vertical Grain Direction Drawer Fronts (VERTICAL) : Wood Dovetail Drawer Box Construction (WOOD) : Standard Drawer Tracks (STD) : Aluminum Beam (ABM) : No Worksurface Grommet Selection (~) : Standard Grommet in Back Panel/Modesty (MOD-GRMT) : Black Grommet (BLK) | | | |
| Line: 12 66-2448UFSTS | Indiana Furniture 24"Dx48"W Height Adjustable Bridge Unit Tag1: OFFICE 105 Item Finishes & Options: <ul style="list-style-type: none"> : High Pressure Laminate (P) : Studio Teak (TK) : Square (Y) : Studio Teak (TK) : Standard Switch, DPG1K (SWCH) : No Grommet/Port Specified (NO WM) : No Grommet in Back Panel (NO) : Black Grommet (GMBBL) | 1 | \$1,640.77 | \$1,640.77 |
| Line: 13 68-3072RP | Indiana Furniture Right Ped Desk, 30D x 72W Tag1: OFFICE 105 Item Finishes & Options: <ul style="list-style-type: none"> : High Pressure Laminate (P) : Studio Teak (TK) : Square (Y) : Studio Teak (TK) : Studio Teak (TK) : Vertical Grain Direction Drawer Fronts (VERTICAL) : Wood Dovetail Drawer Box Construction (WOOD) : Standard Drawer Tracks (STD) : Aluminum Beam (ABM) : No Selection Grommet Options (~) | 1 | \$985.59 | \$985.59 |
| Line: 14 68-2472LC2 | Indiana Furniture Single Left Ped Credenza, 24D x 72W Tag1: OFFICE 105 Item Finishes & Options: | 1 | \$815.45 | \$815.45 |



Customer: Hall County
 Sales Rep: Benjamin Frank
 bfrank@impactofficeinteriors.com

Proposal

2022-1907
 12/19/2022

| Item No. | Item Description | Qty | Item Sell | Ext Sell |
|--------------------------|---|-----|------------|------------|
| | <ul style="list-style-type: none"> : High Pressure Laminate (P) : Studio Teak (TK) : Square (Y) : Studio Teak (TK) : Studio Teak (TK) : Vertical Grain Direction Drawer Fronts (VERTICAL) : Wood Dovetail Drawer Box Construction (WOOD) : Standard Drawer Tracks (STD) : Aluminum Beam (ABM) : No Worksurface Grommet Selection (~) : Standard Grommet in Back Panel/Modesty (MOD-GRMT) : Black Grommet (BLK) | | | |
| Line: 15 66-2448UFSTS | Indiana Furniture 24"Dx48"W Height Adjustable Bridge Unit Tag1: OFFICE 106 Item Finishes & Options: <ul style="list-style-type: none"> : High Pressure Laminate (P) : Studio Teak (TK) : Square (Y) : Studio Teak (TK) : Standard Switch, DPG1K (SWCH) : No Grommet/Port Specified (NO WM) : No Grommet in Back Panel (NO) : Black Grommet (GMBBL) | 1 | \$1,640.77 | \$1,640.77 |
| Line: 16 68-3072LP | Indiana Furniture Left Ped Desk, 30D x 72W Tag1: OFFICE 106 Item Finishes & Options: <ul style="list-style-type: none"> : High Pressure Laminate (P) : Studio Teak (TK) : Square (Y) : Studio Teak (TK) : Studio Teak (TK) : Vertical Grain Direction Drawer Fronts (VERTICAL) : Wood Dovetail Drawer Box Construction (WOOD) : Standard Drawer Tracks (STD) : Aluminum Beam (ABM) : No Selection Grommet Options (~) | 1 | \$985.59 | \$985.59 |
| Line: 17 68-2472RC2 | Indiana Furniture Single Right Ped Credenza, 24D x 72W | 1 | \$815.45 | \$815.45 |



Customer: Hall County
 Sales Rep: Benjamin Frank
 bfrank@impactofficeinteriors.com

Proposal

2022-1907
 12/19/2022

| Item No. | Item Description | Qty | Item Sell | Ext Sell |
|------------------------------|--|-----|------------|------------|
| | Tag1: OFFICE 106 Item Finishes & Options: : High Pressure Laminate (P) : Studio Teak (TK) : Square (Y) : Studio Teak (TK) : Studio Teak (TK) : Vertical Grain Direction Drawer Fronts (VERTICAL) : Wood Dovetail Drawer Box Construction (WOOD) : Standard Drawer Tracks (STD) : Aluminum Beam (ABM) : No Worksurface Grommet Selection (~) : Standard Grommet in Back Panel/Modesty (MOD-GRMT) : Black Grommet (BLK) | | | |
| Line: 18 66-2442UFSTS | Indiana Furniture 24"Dx42"W Height Adjustable Bridge Unit Tag1: OFFICE 111 Item Finishes & Options: : High Pressure Laminate (P) : Studio Teak (TK) : Square (Y) : Studio Teak (TK) : Standard Switch, DPG1K (SWCH) : No Grommet/Port Specified (NO WM) : No Grommet in Back Panel (NO) : Black Grommet (GMBBL) | 1 | \$1,625.26 | \$1,625.26 |
| Line: 19 68-3072LP | Indiana Furniture Left Ped Desk, 30D x 72W Tag1: OFFICE 111 Item Finishes & Options: : High Pressure Laminate (P) : Studio Teak (TK) : Square (Y) : Studio Teak (TK) : Studio Teak (TK) : Vertical Grain Direction Drawer Fronts (VERTICAL) : Wood Dovetail Drawer Box Construction (WOOD) : Standard Drawer Tracks (STD) : Aluminum Beam (ABM) : No Selection Grommet Options (~) | 1 | \$985.59 | \$985.59 |
| Line: 20 | Indiana Furniture | 1 | \$815.45 | \$815.45 |



Customer: Hall County
 Sales Rep: Benjamin Frank
 bfrank@impactofficeinteriors.com

Proposal

2022-1907
 12/19/2022

| Item No. | Item Description | Qty | Item Sell | Ext Sell |
|--------------------------|--|-----|------------|------------|
| 68-2472RC2 | Single Right Ped Credenza, 24D x 72W Tag1: OFFICE 111 Item Finishes & Options: : High Pressure Laminate (P) : Studio Teak (TK) : Square (Y) : Studio Teak (TK) : Studio Teak (TK) : Vertical Grain Direction Drawer Fronts (VERTICAL) : Wood Dovetail Drawer Box Construction (WOOD) : Standard Drawer Tracks (STD) : Aluminum Beam (ABM) : No Worksurface Grommet Selection (~) : Standard Grommet in Back Panel/Modesty (MOD-GRMT) : Black Grommet (BLK) | | | |
| Line: 21 66-2448UFSTS | Indiana Furniture 24"Dx48"W Height Adjustable Bridge Unit Tag1: OFFICE 112 Item Finishes & Options: : High Pressure Laminate (P) : Studio Teak (TK) : Square (Y) : Studio Teak (TK) : Standard Switch, DPG1K (SWCH) : No Grommet/Port Specified (NO WM) : No Grommet in Back Panel (NO) : Black Grommet (GMBBL) | 1 | \$1,640.77 | \$1,640.77 |
| Line: 22 68-3072RP | Indiana Furniture Right Ped Desk, 30D x 72W Tag1: OFFICE 112 Item Finishes & Options: : High Pressure Laminate (P) : Studio Teak (TK) : Square (Y) : Studio Teak (TK) : Studio Teak (TK) : Vertical Grain Direction Drawer Fronts (VERTICAL) : Wood Dovetail Drawer Box Construction (WOOD) : Standard Drawer Tracks (STD) : Aluminum Beam (ABM) : No Selection Grommet Options (~) | 1 | \$985.59 | \$985.59 |



Customer: Hall County
 Sales Rep: Benjamin Frank
 bfrank@impactofficeinteriors.com

Proposal

2022-1907
 12/19/2022

| Item No. | Item Description | Qty | Item Sell | Ext Sell |
|--------------------------|--|-----|------------|------------|
| Line: 23 68-2472LC2 | Indiana Furniture Single Left Ped Credenza, 24D x 72W Tag1: OFFICE 112 Item Finishes & Options: : High Pressure Laminate (P) : Studio Teak (TK) : Square (Y) : Studio Teak (TK) : Studio Teak (TK) : Vertical Grain Direction Drawer Fronts (VERTICAL) : Wood Dovetail Drawer Box Construction (WOOD) : Standard Drawer Tracks (STD) : Aluminum Beam (ABM) : No Worksurface Grommet Selection (~) : Standard Grommet in Back Panel/Modesty (MOD-GRMT) : Black Grommet (BLK) | 1 | \$815.45 | \$815.45 |
| Line: 24 66-2448UFSTS | Indiana Furniture 24"Dx48"W Height Adjustable Bridge Unit Tag1: OFFICE 113 Item Finishes & Options: : High Pressure Laminate (P) : Studio Teak (TK) : Square (Y) : Studio Teak (TK) : Standard Switch, DPG1K (SWCH) : No Grommet/Port Specified (NO WM) : No Grommet in Back Panel (NO) : Black Grommet (GMBBL) | 1 | \$1,640.77 | \$1,640.77 |
| Line: 25 68-3072LP | Indiana Furniture Left Ped Desk, 30D x 72W Tag1: OFFICE 113 Item Finishes & Options: : High Pressure Laminate (P) : Studio Teak (TK) : Square (Y) : Studio Teak (TK) : Studio Teak (TK) : Vertical Grain Direction Drawer Fronts (VERTICAL) : Wood Dovetail Drawer Box Construction (WOOD) | 1 | \$985.59 | \$985.59 |



Customer: Hall County
 Sales Rep: Benjamin Frank
 bfrank@impactofficeinteriors.com

Proposal

2022-1907
 12/19/2022

| Item No. | Item Description | Qty | Item Sell | Ext Sell |
|--------------------------|---|-----|------------|------------|
| | : Standard Drawer Tracks (STD) : Aluminum Beam (ABM) : No Selection Grommet Options (~) | | | |
| Line: 26 68-2472RC2 | Indiana Furniture Single Right Ped Credenza, 24D x 72W Tag1: OFFICE 113 Item Finishes & Options: : High Pressure Laminate (P) : Studio Teak (TK) : Square (Y) : Studio Teak (TK) : Studio Teak (TK) : Vertical Grain Direction Drawer Fronts (VERTICAL) : Wood Dovetail Drawer Box Construction (WOOD) : Standard Drawer Tracks (STD) : Aluminum Beam (ABM) : No Worksurface Grommet Selection (~) : Standard Grommet in Back Panel/Modesty (MOD-GRMT) : Black Grommet (BLK) | 1 | \$815.45 | \$815.45 |
| Line: 27 66-2448UFSTS | Indiana Furniture 24"Dx48"W Height Adjustable Bridge Unit Tag1: OFFICE 114 Item Finishes & Options: : High Pressure Laminate (P) : Studio Teak (TK) : Square (Y) : Studio Teak (TK) : Standard Switch, DPG1K (SWCH) : No Grommet/Port Specified (NO WM) : No Grommet in Back Panel (NO) : Black Grommet (GMBBL) | 1 | \$1,640.77 | \$1,640.77 |
| Line: 28 68-3072LP | Indiana Furniture Left Ped Desk, 30D x 72W Tag1: OFFICE 114 Item Finishes & Options: : High Pressure Laminate (P) : Studio Teak (TK) : Square (Y) : Studio Teak (TK) | 1 | \$985.59 | \$985.59 |



Customer: Hall County
 Sales Rep: Benjamin Frank
 bfrank@impactofficeinteriors.com

Proposal

2022-1907
 12/19/2022

| Item No. | Item Description | Qty | Item Sell | Ext Sell |
|--------------------------|---|-----|------------|------------|
| | <ul style="list-style-type: none"> : Studio Teak (TK) : Vertical Grain Direction Drawer Fronts (VERTICAL) : Wood Dovetail Drawer Box Construction (WOOD) : Standard Drawer Tracks (STD) : Aluminum Beam (ABM) : No Selection Grommet Options (~) | | | |
| Line: 29 68-2472RC2 | Indiana Furniture Single Right Ped Credenza, 24D x 72W Tag1: OFFICE 114 Item Finishes & Options: <ul style="list-style-type: none"> : High Pressure Laminate (P) : Studio Teak (TK) : Square (Y) : Studio Teak (TK) : Studio Teak (TK) : Vertical Grain Direction Drawer Fronts (VERTICAL) : Wood Dovetail Drawer Box Construction (WOOD) : Standard Drawer Tracks (STD) : Aluminum Beam (ABM) : No Worksurface Grommet Selection (~) : Standard Grommet in Back Panel/Modesty (MOD-GRMT) : Black Grommet (BLK) | 1 | \$815.45 | \$815.45 |
| Line: 30 66-2448UFSTS | Indiana Furniture 24"Dx48"W Height Adjustable Bridge Unit Tag1: OFFICE 115 Item Finishes & Options: <ul style="list-style-type: none"> : High Pressure Laminate (P) : Studio Teak (TK) : Square (Y) : Studio Teak (TK) : Standard Switch, DPG1K (SWCH) : No Grommet/Port Specified (NO WM) : No Grommet in Back Panel (NO) : Black Grommet (GMBBL) | 1 | \$1,640.77 | \$1,640.77 |
| Line: 31 68-3072LP | Indiana Furniture Left Ped Desk, 30D x 72W Tag1: OFFICE 115 Item Finishes & Options: <ul style="list-style-type: none"> : High Pressure Laminate (P) | 1 | \$985.59 | \$985.59 |



Customer: Hall County
 Sales Rep: Benjamin Frank
 bfrank@impactofficeinteriors.com

Proposal

2022-1907
 12/19/2022

| Item No. | Item Description | Qty | Item Sell | Ext Sell |
|------------------------|---|-----|-----------|-------------|
| | <ul style="list-style-type: none"> : Studio Teak (TK) : Square (Y) : Studio Teak (TK) : Studio Teak (TK) : Vertical Grain Direction Drawer Fronts (VERTICAL) : Wood Dovetail Drawer Box Construction (WOOD) : Standard Drawer Tracks (STD) : Aluminum Beam (ABM) : No Selection Grommet Options (~) | | | |
| Line: 32 68-2472RC2 | <p>Indiana Furniture</p> <p>Single Right Ped Credenza, 24D x 72W</p> <p>Tag1: OFFICE 115</p> <p>Item Finishes & Options:</p> <ul style="list-style-type: none"> : High Pressure Laminate (P) : Studio Teak (TK) : Square (Y) : Studio Teak (TK) : Studio Teak (TK) : Studio Teak (TK) : Vertical Grain Direction Drawer Fronts (VERTICAL) : Wood Dovetail Drawer Box Construction (WOOD) : Standard Drawer Tracks (STD) : Aluminum Beam (ABM) : No Worksurface Grommet Selection (~) : Standard Grommet in Back Panel/Modesty (MOD-GRMT) : Black Grommet (BLK) | 1 | \$815.45 | \$815.45 |
| Line: 33 BU7511D | <p>JSI Bourne</p> <p>Bourne Guest Chair - Single Textile</p> <p>Tag1: (2) PER OFFICE</p> <p>Item Finishes & Options:</p> <p>Fabric Grade Selection : Grade F (F)</p> <p>Grade F Fabric Manufacturer Selection : ArcCom Fabric (ArcCom)</p> <p>Arc Com Grade F Fabrics : Apollo (Apollo)</p> <p>User specified entry : 6 (63355 Ice Blue #)</p> <p>Wood Species : Maple Wood Species (Standard) (M)</p> <p>Maple Wood Finish Selection : Studio Teak Coordinate (CST)</p> <p>Glides : Metal Leveling Glides (Standard) (MTG)</p> | 16 | \$864.00 | \$13,824.00 |
| Line: 34 OTG11734B | <p>Offices to Go</p> <p>Luxhide Uph. w/ Mock Leather Trim, Mid Back, Single Position Tilt Lock w/ Tilt Tension Adj., Fixed Height Arms (Polished Alum), Pneu Seat Height Adj., Chrome Plated Steel Base, Dual</p> | 12 | \$387.04 | \$4,644.48 |



Customer: Hall County
 Sales Rep: Benjamin Frank
 bfrank@impactofficeinteriors.com

Proposal

2022-1907
 12/19/2022

| Item No. | Item Description | Qty | Item Sell | Ext Sell |
|--------------------------------------|---|-----|-----------|------------|
| | Wheel Carpet Tag1: CONF CHAIRS Item Finishes & Options: ^Luxhide + Fabric Seating Textiles : Stocked Luxhide Textile (PU30/BL20 - Black) (~STO) Stocked Black Luxhide Textile : 1-Black (PU30/BL20) (PU30/BL20) | | | |
| Line: 35 1073.BK2.MB.Y/E3.AR6 | Sit On It Seating Vectra Highback Mesh with Adjustable Lumbar Support, Enhanced Synchro w/ Seat Depth, Height/Width Adjustable Tag1: (1) PER OFFICE Tag2: 2 for receptions Item Finishes & Options: Accent Color Selection : Fog (LA4) Cylinder Height Option : Standard Cylinder (CH1) Frame Colors : Fog Frame (FC13) Base Selection : Fog Nylon Base (B21) Caster Selector : Carpet Casters (CS5) Vectra Mesh Back Colors : Nickel Mesh (MC6) Fabric or Leather Upholstery Selection : Fabric Grade Selections (FABRIC) Fabric Grade Selections : Fabric Grade 3 (FG3) Fabric Grade 3 Selection : Affinity Standard Color Selection (AFFINITY) Affinity Color Selections : Affinity Stone (STONE) Packaging Options : Knocked Down (KD) | 10 | \$439.04 | \$4,390.40 |
| Line: 36 PSLAT436W | Trendway Pack Files & Storage PACK LAT FILE 4-HIGH W/TOP & CNTR BALANCE WGHT, 36W Tag1: (1) PER OFFICE Item Finishes & Options: PULL STYLE : BEVEL PULL (.B) TRIM COLOR GROUP : TEXTURED TRIM COLORS (.T2) TEXTURED TRIM COLOR : TEXTURED SAND (.TY) LOCK OPTION - SILVER LOCK : RANDOM (.R) | 8 | \$913.60 | \$7,308.80 |

Misc Items.....\$71,878.30



Customer: Hall County
Sales Rep: Benjamin Frank
bfrank@impactofficeinteriors.com

Proposal

2022-1907
12/19/2022

Subtotal.....\$71,878.30
Total Amount.....\$71,878.30



Customer: Hall County
Sales Rep: Benjamin Frank
bfrank@impactofficeinteriors.com

Proposal

2022-1907
12/19/2022

Please issue purchase order #1, in the amount of \$41,710.62 to:

Indiana Furniture
C/O Impact Office Interiors, Inc.
1224 Mill Street
P.O. Box 270
Jasper, IN 47547-0270
800-422-5727 (phone)
812-482-9035 (fax)

Please issue purchase order #2, in the amount of \$13,824.00 to:

JSI
C/O Impact Office Interiors, Inc.
225 S. Clay Street
Jasper, IN 47546
800-457-4511 (phone)
812-482-1548 (fax)

Please issue purchase order #3, in the amount of \$4,644.48 to:

Global Furniture Group
C/O Impact Office Interiors, Inc.
P.O. Box 970
Marlton, NJ 08053
678-602-4130 (phone)
678-602-4136 (fax)

Please issue purchase order #4, in the amount of \$4,390.40 to:

Sit On It
C/O Impact Office Interiors, Inc.
25090 Network Place
Chicago, IL 60673-1250

Please issue purchase order #5, in the amount of \$7,308.80 to:

Trendway
C/O Impact Office Interiors, Inc.
P.O. Box 776195
Chicago, IL 60677-6195
800-748-0234 (phone)

I agree to purchase all items listed on these pages. I certify that all finishes, fabrics and/or materials specified are correct and the prices listed are agreed upon.

I understand that orders may not be canceled or changed after 3 business days. All furniture items are considered "special order" and are non-returnable and non-refundable.

Credit Card Payments are subject to a 3% surcharge.



Customer: Hall County
Sales Rep: Benjamin Frank
bfrank@impactofficeinteriors.com

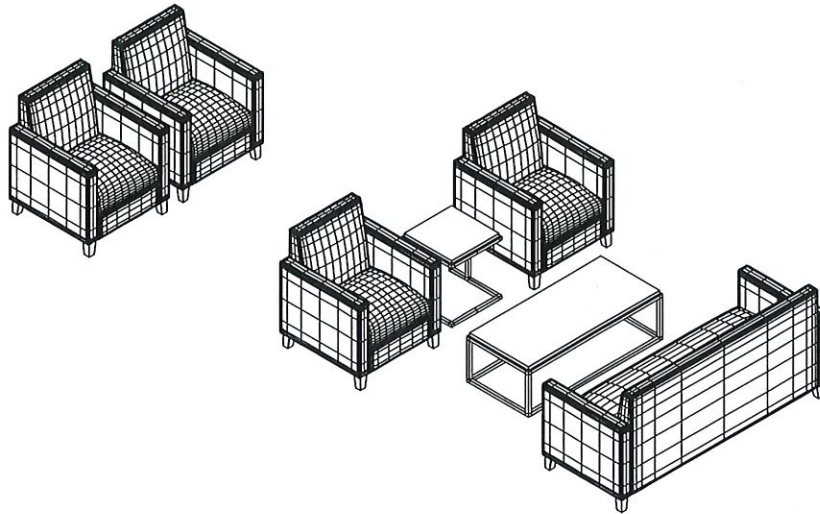
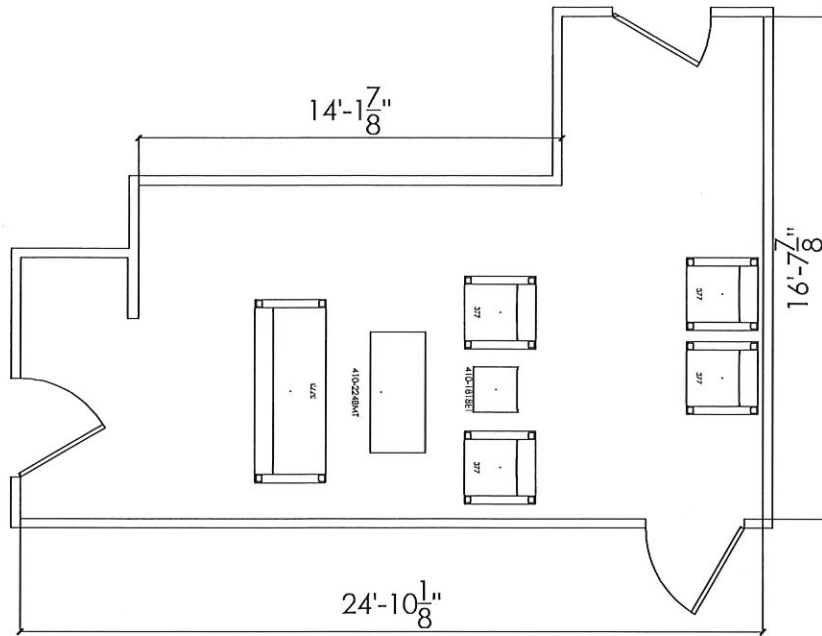
Proposal

2022-1907

12/19/2022

A deposit of 50.00% (\$35,939.15) is required to place an order for this proposal.

Accepted by: _____ Date: _____



Not intended for installation or construction. Dealer has ultimate responsibility for accuracy & correctness of components counts & measurements. Dealer shall verify & confirm all site dimensions & suitability of products & applications consistent with published guidelines/applicable codes. All plans, drawings & specifications are property of OED and may not be reproduced without written consent. A maximum of three revisions will be completed before a purchase order must be received. One additional revision may be provided within 24 hours of issued purchase order. Any additional revisions are subject to design time billed directly to the dealer.

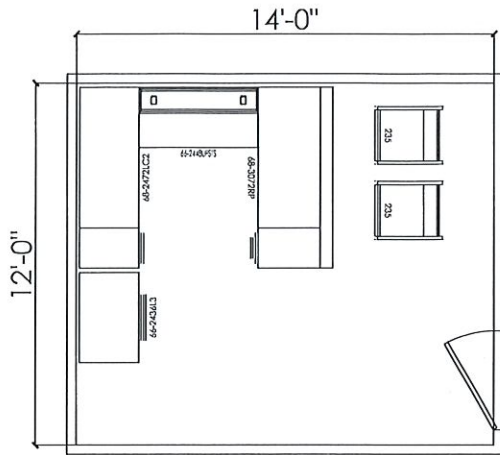
| | |
|------------|--------------|
| SCALE: | 1/4"=1'-0" |
| DATE: | 12/12/2022 |
| DRAWN BY: | A.DUNN |
| OSD REP.: | M.GAILUNKE |
| PROJECT #: | SP-430-MG22D |
| SHEET NO.: | |
| | 2 OF 4 |

Project
IMPACT OFFICE INTERIORS
 HALL COUNTY PRE TRIAL BLDG
 INDIANA CANVAS, BLISS, BRITTA, AND JOY

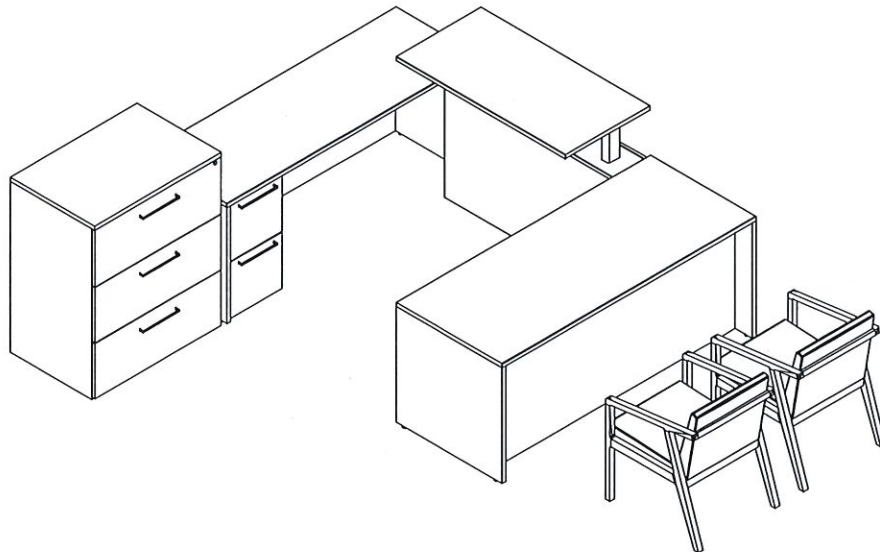
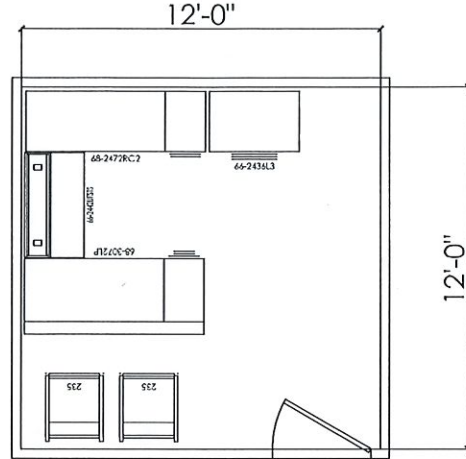
OED MARKETING
 1700 Commerce Drive, NW
 Suite 200
 Atlanta, Georgia 30318
 Phone - (770) 984-9047
 Fax - (770) 984-8918



ROOM 105



ROOM 111



NOTE: ALL OFFICES HAVE A 48"W HAT BRIDGE, EXCEPT FOR ROOM 111 HAS A 42"W BRIDGE.
 NOTE: 5 LEFT HANDS AND 3 RIGHT HANDS HAVE BEEN SPECIFIED.

Not intended for installation or construction. Dealer has ultimate responsibility for accuracy & correctness of components counts & measurements. Dealer shall verify & confirm all site dimensions & suitability of products & applications consistent with published guidelines/applicable codes. All plans, drawings & specifications are property of OED and may not be reproduced without written consent. A maximum of three revisions will be completed before a purchase order must be received. One additional revision may be provided within 24 hours of issued purchase order. Any additional revisions are subject to design time billed directly to the dealer.

| | |
|------------|----------------|
| SCALE: | 1/4"=1'-0" |
| DATE: | 12/12/2022 |
| DRAWN BY: | A.DUNN |
| OED REP.: | M.GALLUNKE |
| PROJECT #: | SP-430-11-G22D |
| SHEET NO.: | |

Project
IMPACT OFFICE INTERIORS
 HALL COUNTY PRE TRIAL BLDG
 INDIANA CANVAS, BLISS, BRITTA, AND JOY

OED MARKETING
 1700 Commerce Drive, NW
 Suite 200
 Atlanta, Georgia 30318
 Phone - (770) 984-9047
 Fax - (770) 984-8918



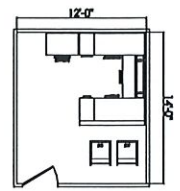


OED MARKETING
 1700 Commerce Drive, NW
 Suite 200
 Atlanta, Georgia 30318
 Phone - (770) 984-9047
 Fax - (770) 984-8918

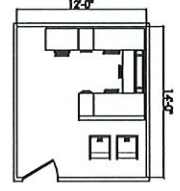
Project
IMPACT OFFICE INTERIORS
HALL COUNTY PRE TRIAL BLDG
 INDIANA CANVAS, BLISS, BRITTA, AND JOY

SCALE: 1/4"=1'-0"
 DATE: 12/12/2022
 DRAWN BY: A.DUNN
 OED REP: M.GALUNKE
 PROJECT #: SP-430-MG22D
 SHEET NO.

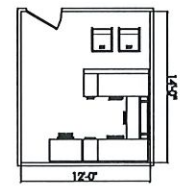
OFFICE 104



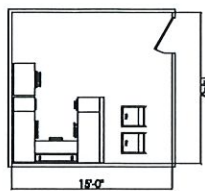
OFFICE 105



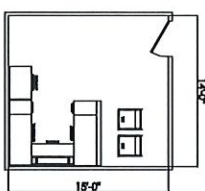
OFFICE 106



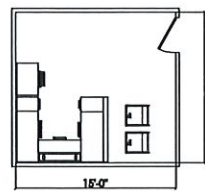
OFFICE 113



OFFICE 114



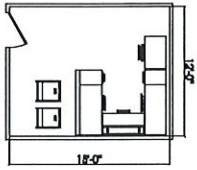
OFFICE 115



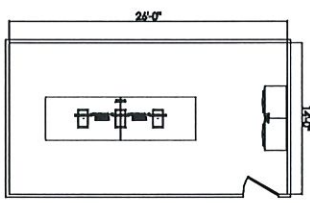
OFFICE 111



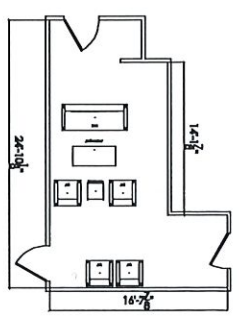
OFFICE 112



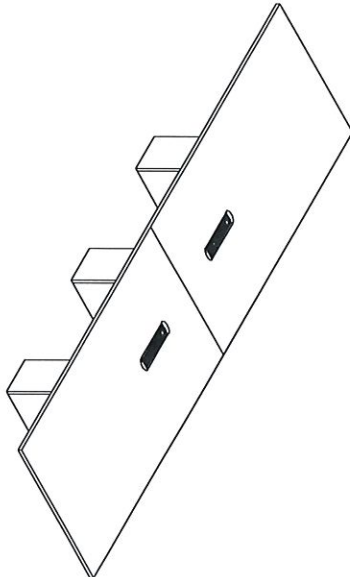
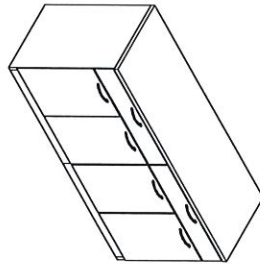
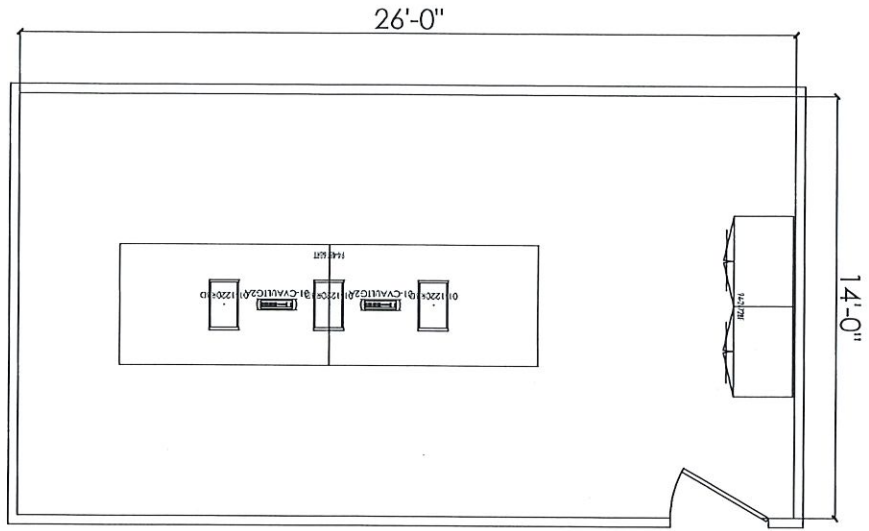
CONFERENCE 101



LOBBY 118



Not intended for production or construction. Dealer has ultimate responsibility for accuracy & correctness of component counts & measurements. Dealer shall verify & confirm all dimensions & suitability of products & applications consistent with published guidelines/specification codes. All plans, drawings & specifications are property of OED and may not be reproduced without written consent. A minimum of three revisions will be completed before a purchase order must be received. One additional revision may be provided within 24 hours of issued purchase order. Any additional revisions are subject to design time billed directly to the dealer.



Not intended for installation or construction. Dealer has ultimate responsibility for accuracy & correctness of component counts & measurements. Dealer shall verify & confirm all site dimensions & suitability of products & applications consistent with published guidelines/specification codes. All items, quantities & specifications are property of OED and may not be reproduced without written consent. A maximum of three revisions will be completed before a purchase order must be received. One additional revision may be provided within 24 hours of issue purchase order. Any additional revisions are subject to design time billed directly to the client.

| | |
|-------------|---------------|
| SCALE: | 1/4"=1'-0" |
| DATE: | 12/19/2022 |
| DRAWN BY: | A. DUNN |
| CHECKED BY: | M. GALLUNKE |
| PROJECT #: | SF-400-W-0225 |
| SHEET NO.: | 3 |

Project
IMPACT OFFICE INTERIORS
HALL COUNTY PRE TRIAL BLDG
 INDIANA CANVAS, BRITTA, BLISS, AND JOY

OED MARKETING
 1700 Commerce Drive, NW
 Suite 200
 Atlanta, Georgia 30318
 Phone - (770) 984-9047
 Fax - (770) 984-8918



