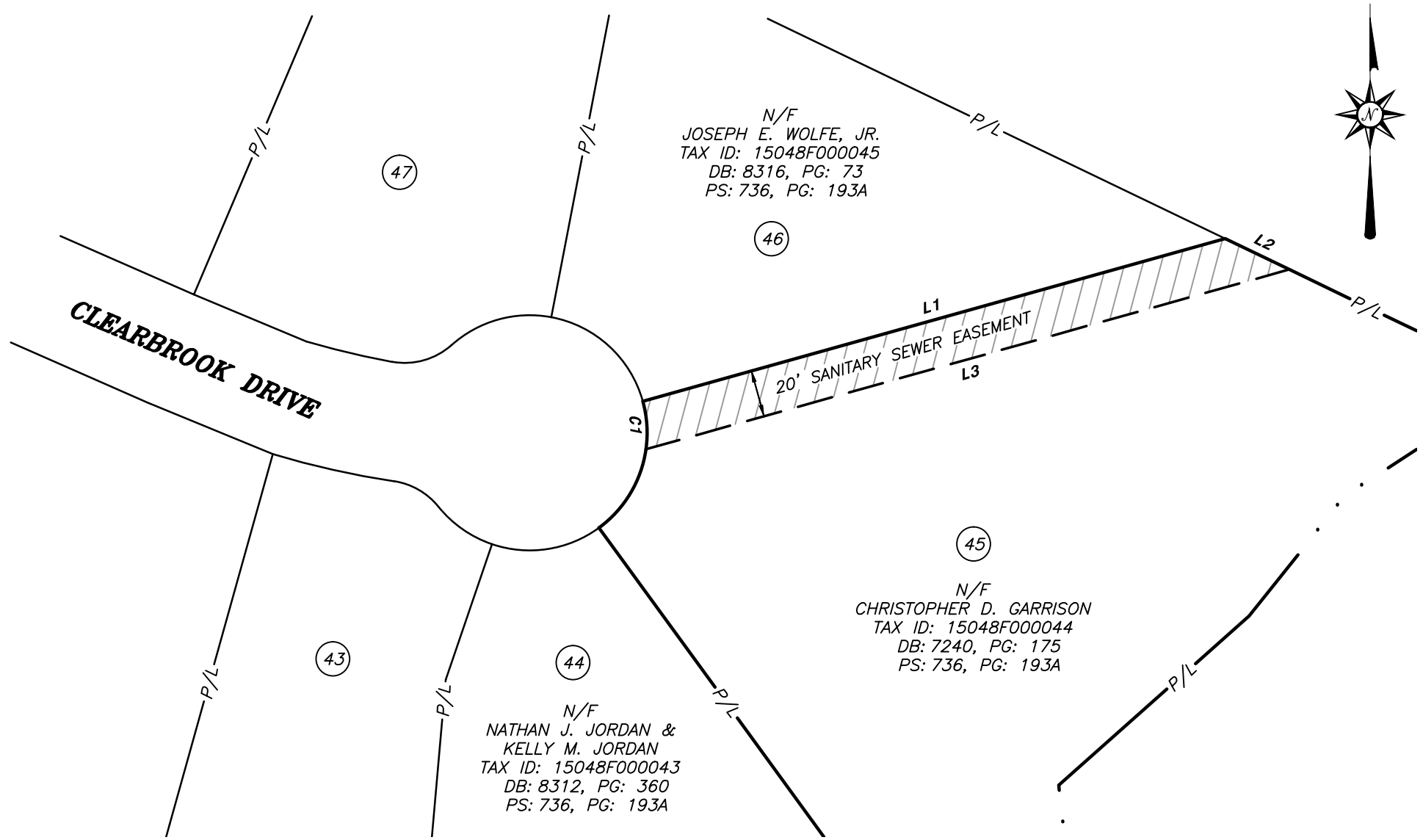



'EXHIBIT - A'



N/F
 JOSEPH E. WOLFE, JR.
 TAX ID: 15048F000045
 DB: 8316, PG: 73
 PS: 736, PG: 193A

(45)
 N/F
 CHRISTOPHER D. GARRISON
 TAX ID: 15048F000044
 DB: 7240, PG: 175
 PS: 736, PG: 193A

(44)
 N/F
 NATHAN J. JORDAN &
 KELLY M. JORDAN
 TAX ID: 15048F000043
 DB: 8312, PG: 360
 PS: 736, PG: 193A

 = REQUIRED SANITARY SEWER EASEMENT AREA
 0.124 ACRES or 5,399 SQ.FEET

LINE	BEARING	DISTANCE
L1	N 74°23'47" E	257.17'
L2	S 64°19'21" E	30.31'
L3	S 74°23'47" W	284.12'

CURVE	ARC LENGTH	RADIUS	CHORD BEARING	CHORD LENGTH
C1	20.58'	50.00'	N 03°48'52" W	20.43'

SANITARY SEWER EASEMENT EXHIBIT FOR:
CHRISTOPHER D. GARRISON
 6342 CLEARBROOK DRIVE, FLOWERY BRANCH, GEORGIA 30542

FRIENDSHIP G.M.D. (1419)
 HALL COUNTY, GEORGIA
 LOT 45 OF SOUTHERN OAKS SUBDIVISION
 PLAT SLIDE: 736, PAGE: 193A

