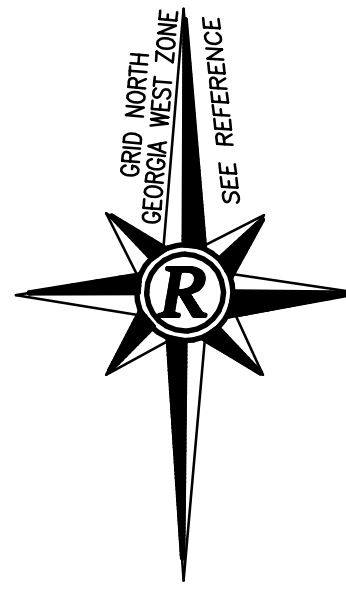


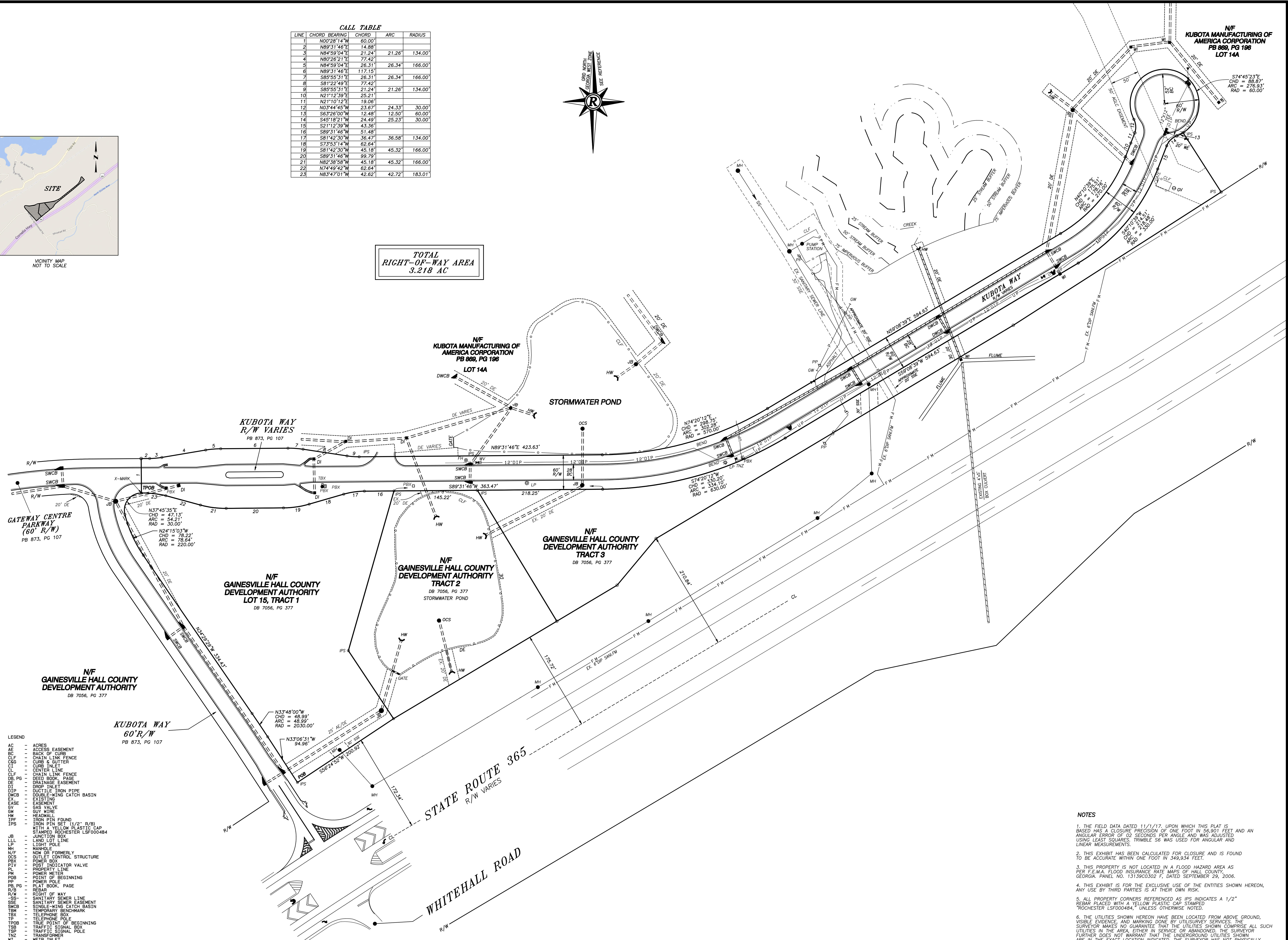
VICINITY MAP
NOT TO SCALE

CALL TABLE

LINE	CHORD BEARING	CHORD	ARC	RADIUS
1	N00°28'14"W	60.00'		
2	N89°31'46"E	14.88'		
3	N84°59'04"E	21.24'	21.26'	134.00'
4	N80°26'21"E	77.42'		
5	N84°59'04"E	26.31'	26.34'	166.00'
6	N89°31'46"E	117.15'		
7	S85°55'31"E	26.31'	26.34'	166.00'
8	S81°22'49"E	77.42'		
9	S85°55'31"E	21.24'	21.26'	134.00'
10	N21°12'39"E	25.21'		
11	N21°10'12"E	19.06'		
12	N03°44'45"W	23.67'	24.33'	30.00'
13	S63°26'00"W	12.48'	12.50'	60.00'
14	S45°18'21"W	24.40'	25.23'	30.00'
15	S21°12'39"W	43.36'		
16	S89°31'46"W	51.48'		
17	S81°42'30"W	36.47'	36.58'	134.00'
18	S33°31'14"W	62.64'		
19	S81°42'30"W	45.18'	45.32'	166.00'
20	S89°31'46"W	99.79'		
21	N82°38'58"W	45.18'	45.32'	166.00'
22	N74°49'42"W	62.64'		
23	N83°47'01"W	42.62'	42.72'	183.01'



**TOTAL
RIGHT-OF-WAY AREA
3.218 AC**



- LEGEND**
- AC - ACRES
 - AE - ACCESS EASEMENT
 - BE - BACK OF CURB
 - CLF - CHAIN LINK FENCE
 - CSB - CURB & GUTTER
 - CI - CURB INLET
 - CL - CENTER LINE
 - CLF - CHAIN LINK FENCE
 - DE - DRAINAGE EASEMENT
 - DE PG - DRAINAGE EASEMENT
 - DI - DUCT INLET
 - DIP - DUCTILE IRON PIPE
 - DWCB - DOUBLE-WING CATCH BASIN
 - EX - EXISTING
 - EASE - EASEMENT
 - GV - GAS VALVE
 - GW - GUY WIRE
 - HM - HEADWALL
 - IPF - IRON PIVOT FOUND
 - IPB - IRON PIVOT FOUND WITH A YELLOW PLASTIC CAP STAMPED ROCHESTER LSF000484
 - JB - JUNCTION BOX
 - LL - LAND LOT LINE
 - LP - LIGHT POLE
 - MH - MANHOLE
 - N/F - NOW OR FORMERLY
 - NC - NOT CONTROL STRUCTURE
 - PIV - POST INDICATOR VALVE
 - PL - PROPERTY LINE
 - PM - POWER METER
 - POB - POINT OF BEGINNING
 - PP - POWER POLE
 - PLB - PLAT BOOK, PAGE
 - R/B - REBAR
 - R/W - RIGHT OF WAY
 - SS - SANITARY SEWER LINE
 - SS-E - SANITARY SEWER EASEMENT
 - SWCB - SINGLE-WING CATCH BASIN
 - TM - TEMPORARY BENCHMARK
 - TBX - TELEPHONE BOX
 - TPOB - TRUE POINT OF BEGINNING
 - TS - TRAFFIC SIGNAL BOX
 - TSP - TRAFFIC SIGNAL POLE
 - TN - TRANSFORMER
 - WI - WEIR INLET
 - FM - FORCE MAIN
 - OP - OVERHEAD POWER LINE
 - UP - UNDERGROUND POWER LINE

REFERENCE PLATS
1. RIGHT-OF-WAY DEDICATION PLAT FOR GATEWAY CENTRE PARKWAY, ABT WAY & KUBOTA WAY, PREPARED BY ROCHESTER & ASSOCIATES, INC., DATED 6/23/16, RECORDED IN PLAT BOOK 873, PAGE 107, HALL COUNTY RECORDS.

**THIS EXHIBIT IS FOR INFORMATION PURPOSES ONLY.
NOT TO BE RECORDED.**

- NOTES**
- THE FIELD DATA DATED 11/17/17, UPON WHICH THIS PLAT IS BASED HAS A CLOSURE PRECISION OF ONE FOOT IN 56,901 FEET AND AN ANGULAR ERROR OF 02 SECONDS PER ANGLE AND WAS ADJUSTED USING LEAST SQUARES. TRIMBLE S6 WAS USED FOR ANGULAR AND LINEAR MEASUREMENTS.
 - THIS EXHIBIT HAS BEEN CALCULATED FOR CLOSURE AND IS FOUND TO BE ACCURATE WITHIN ONE FOOT IN 349,934 FEET.
 - THIS PROPERTY IS NOT LOCATED IN A FLOOD HAZARD AREA AS PER F.E.M.A. FLOOD INSURANCE RATE MAPS OF HALL COUNTY, GEORGIA, PANEL NO. 13139C0302 F, DATED SEPTEMBER 29, 2006.
 - THIS EXHIBIT IS FOR THE EXCLUSIVE USE OF THE ENTITIES SHOWN HEREON. ANY USE BY THIRD PARTIES IS AT THEIR OWN RISK.
 - ALL PROPERTY CORNERS REFERENCED AS IPS INDICATES A 1/2" REBAR PLACED WITH A YELLOW PLASTIC CAP STAMPED "ROCHESTER LSF000484" UNLESS OTHERWISE NOTED.
 - THE UTILITIES SHOWN HEREON HAVE BEEN LOCATED FROM ABOVE GROUND, VISIBLE EVIDENCE, AND MARKING DONE BY UTILITIES SERVICES. THE SURVEYOR MAKES NO GUARANTEE THAT THE UTILITIES SHOWN COMPRISE ALL SUCH UTILITIES IN THE AREA, EITHER IN SERVICE OR ABANDONED. THE SURVEYOR FURTHER DOES NOT WARRANT THAT THE UNDERGROUND UTILITIES SHOWN ARE IN THE EXACT LOCATION INDICATED. THE SURVEYOR HAS NOT PHYSICALLY LOCATED THE UNDERGROUND UTILITIES.
 - ALL DISTANCES AS SHOWN ARE HORIZONTAL GROUND DISTANCES IN U.S. SURVEY FEET. (39.37 INCHES = 1 METER)

Rochester & Associates, Inc.
425 Oak Street N.W. • Gainesville, Georgia 30601
(770)718-0600 (770)718-9090 Fax • www.rochester-assoc.com

BOUNDARY EXHIBIT FOR:
KUBOTA WAY EXTENSION
LOCATED IN G.A.D. 403 HALL COUNTY, GEORGIA

NO.	DATE	DESCRIPTION	REVISIONS

GRAPHIC SCALE
1" = 60'
0' 30' 60' 120'

SHEET 1 OF 1
DATE: 12/17/17
JOB NO.: G200970115
FILE NO.: "R09701"
DRAWN BY: MFC