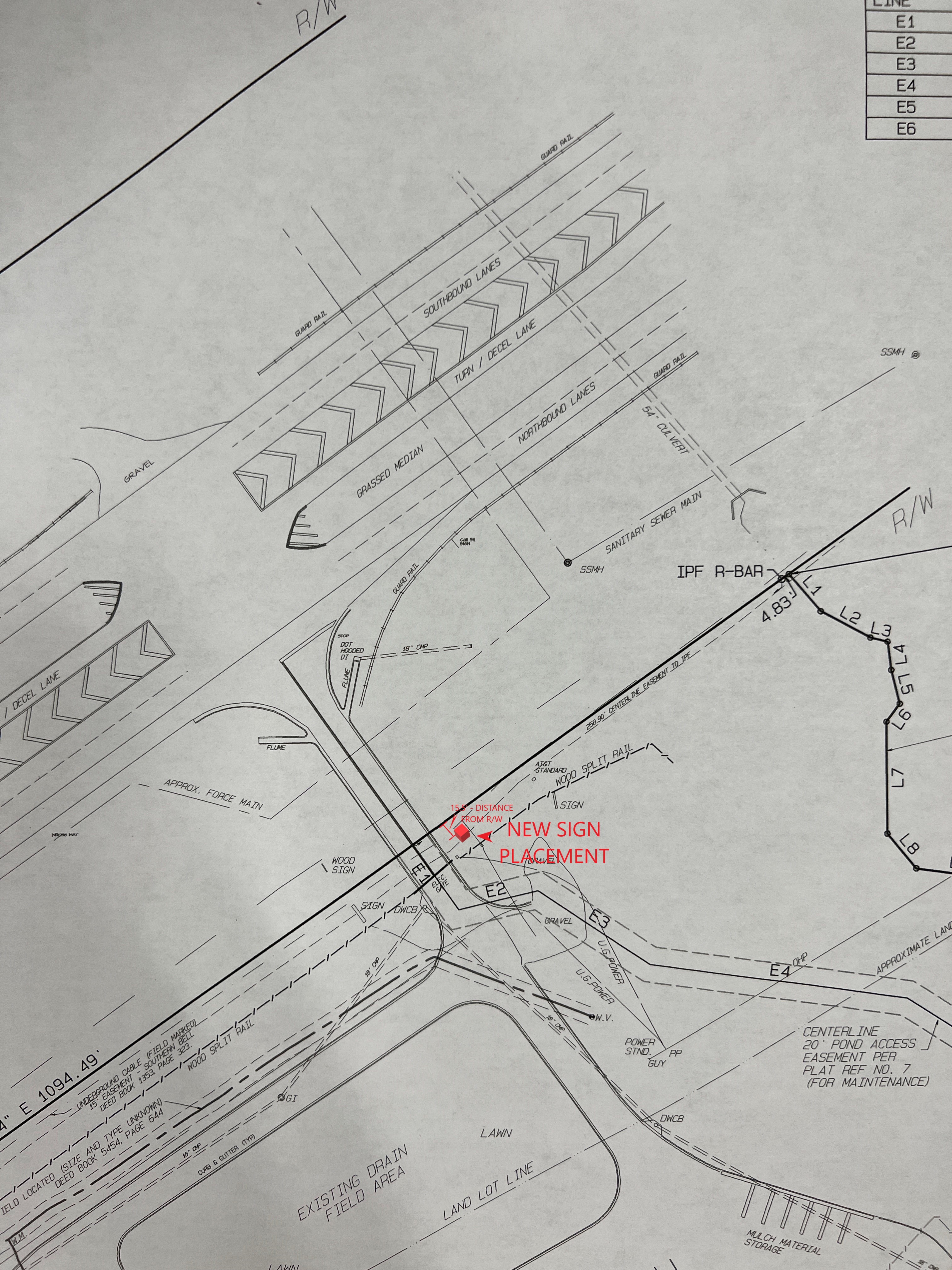


LINE
E1
E2
E3
E4
E5
E6



15.8' DISTANCE FROM R/W
NEW SIGN PLACEMENT

CENTERLINE 20' POND ACCESS EASEMENT PER PLAT REF NO. 7 (FOR MAINTENANCE)

4" E 1094.49'
 UNDERGROUND CABLE (FIELD MARKED) 15' EASEMENT - SOUTHERN BELL DEED BOOK 1353, PAGE 323.
 FIELD LOCATED (SIZE AND TYPE UNKNOWN) DEED BOOK 5454, PAGE 644

EXISTING DRAIN FIELD AREA
 LAND LOT LINE

MULCH MATERIAL STORAGE

G R S H A M
 PLANNING & DEVELOPMENT, INC.
 P.O. BOX 2255
 CLAYTONVILLE, GEORGIA 30523
 706-774-9844
 FAX 706-774-7143

4335 CORNELIA HIGHWAY, LLC AND CHICAGO TITLE INSURANCE COMPANY
 LAND LOTS 84 AND 85 OF THE 9TH DISTRICT
 HALL COUNTY GEORGIA
 A13 / 1000 SHEET FOR

REVISIONS

NO.	DATE	DESCRIPTION

BOUNDARY DATA

LINE	BEARING	DISTANCE
L1	S 89° 00' 00" W	27.00
L2	S 89° 00' 00" W	27.00
L3	S 89° 00' 00" W	27.00
L4	S 89° 00' 00" W	27.00
L5	S 89° 00' 00" W	27.00
L6	S 89° 00' 00" W	27.00
L7	S 89° 00' 00" W	27.00
L8	S 89° 00' 00" W	27.00
L9	S 89° 00' 00" W	27.00
L10	S 89° 00' 00" W	27.00
L11	S 89° 00' 00" W	27.00
L12	S 89° 00' 00" W	27.00
L13	S 89° 00' 00" W	27.00
L14	S 89° 00' 00" W	27.00
L15	S 89° 00' 00" W	27.00
L16	S 89° 00' 00" W	27.00
L17	S 89° 00' 00" W	27.00
L18	S 89° 00' 00" W	27.00
L19	S 89° 00' 00" W	27.00
L20	S 89° 00' 00" W	27.00
L21	S 89° 00' 00" W	27.00
L22	S 89° 00' 00" W	27.00
L23	S 89° 00' 00" W	27.00
L24	S 89° 00' 00" W	27.00
L25	S 89° 00' 00" W	27.00
L26	S 89° 00' 00" W	27.00
L27	S 89° 00' 00" W	27.00
L28	S 89° 00' 00" W	27.00
L29	S 89° 00' 00" W	27.00
L30	S 89° 00' 00" W	27.00

INTERNAL CORNER DATA

LINE	BEARING	DISTANCE
C1	S 89° 00' 00" W	0.00
C2	S 89° 00' 00" W	0.00
C3	S 89° 00' 00" W	0.00
C4	S 89° 00' 00" W	0.00
C5	S 89° 00' 00" W	0.00
C6	S 89° 00' 00" W	0.00
C7	S 89° 00' 00" W	0.00
C8	S 89° 00' 00" W	0.00
C9	S 89° 00' 00" W	0.00
C10	S 89° 00' 00" W	0.00
C11	S 89° 00' 00" W	0.00
C12	S 89° 00' 00" W	0.00
C13	S 89° 00' 00" W	0.00
C14	S 89° 00' 00" W	0.00
C15	S 89° 00' 00" W	0.00
C16	S 89° 00' 00" W	0.00
C17	S 89° 00' 00" W	0.00
C18	S 89° 00' 00" W	0.00
C19	S 89° 00' 00" W	0.00
C20	S 89° 00' 00" W	0.00
C21	S 89° 00' 00" W	0.00
C22	S 89° 00' 00" W	0.00
C23	S 89° 00' 00" W	0.00
C24	S 89° 00' 00" W	0.00
C25	S 89° 00' 00" W	0.00
C26	S 89° 00' 00" W	0.00
C27	S 89° 00' 00" W	0.00
C28	S 89° 00' 00" W	0.00
C29	S 89° 00' 00" W	0.00
C30	S 89° 00' 00" W	0.00

PROPOSED PLACEMENT OF NEW MONUMENT
 EXISTING MONUMENT

GEORGIA STATE HIGHWAY 29
 200' R.M. 365'

14.292 ACRES

LOCAL DESCRIPTION

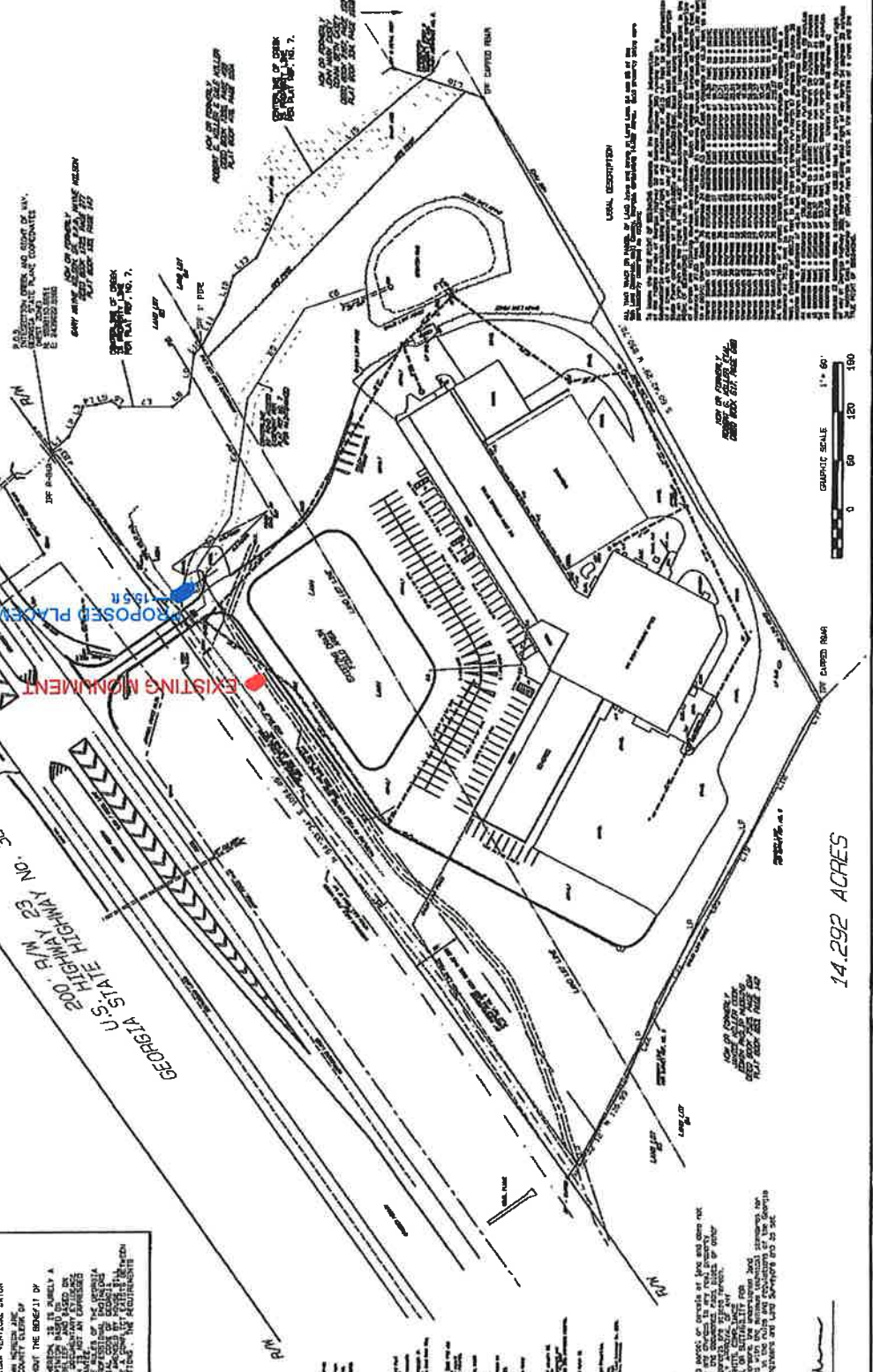
THE LAND SHOWN ON THIS PLAN IS PART OF THE LANDS OWNED BY THE CHICAGO TITLE INSURANCE COMPANY, A CORPORATION OF THE STATE OF ILLINOIS, AND IS SUBJECT TO THE MORTGAGE DEED RECORDED IN THE PUBLIC RECORDS OF THE CLERK OF SUPERIOR COURT OF HALL COUNTY, GEORGIA, IN BOOK 100, PAGE 100.

LEGEND

- IPF = IRON PIN FOUND
- IPS = IRON PIN SET
- CL = CENTERLINE
- PL = PROPERTY LINE
- R/W = RIGHT OF WAY
- M = MANHOLE
- DR = DRAINAGE
- SSE = SANITARY SEWER
- CS = CATCH BASIN
- HM = HEAD WALL

NOTES

1. HORIZONTAL DATA IS GEORGIA STATE PLUMBING SYSTEM, NORTH AMERICAN DATUM.
2. ALL DISTANCES ARE IN FEET AND DECIMALS THEREOF.
3. ALL ANGLES ARE IN DEGREES, MINUTES AND SECONDS.
4. ALL DISTANCES ARE TO BE MEASURED ALONG THE CENTERLINE OF THE ROAD.
5. ALL DISTANCES ARE TO BE MEASURED ALONG THE PROPERTY LINE.
6. ALL DISTANCES ARE TO BE MEASURED ALONG THE RIGHT OF WAY.



GRAPHIC SCALE 1" = 60'

0 60 120 180

SUPERVISOR CERTIFICATION

This plan is a representation of an actual survey, or records of same, and does not constitute a warranty of any kind. The surveyor is not responsible for any errors or omissions in this plan, and the user of this plan is advised to verify all data and conditions before using the same.

DAVID K. SMITH
 MECHANICAL ENGINEER
 LICENSE NO. 10000
 STATE OF GEORGIA

APPROVED & AUTHORIZED BY THE CLIENT

APPROVED & AUTHORIZED BY THE ENGINEER

APPROVED & AUTHORIZED BY THE SURVEYOR
