

Street Corner: Base Option

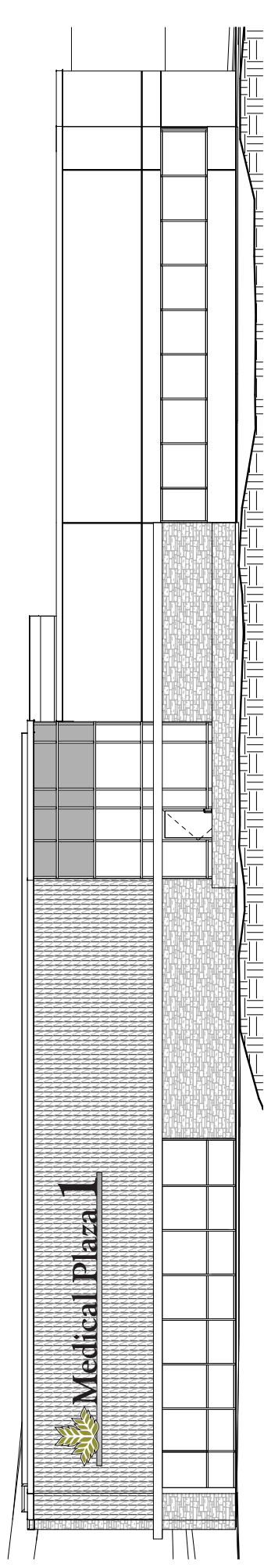
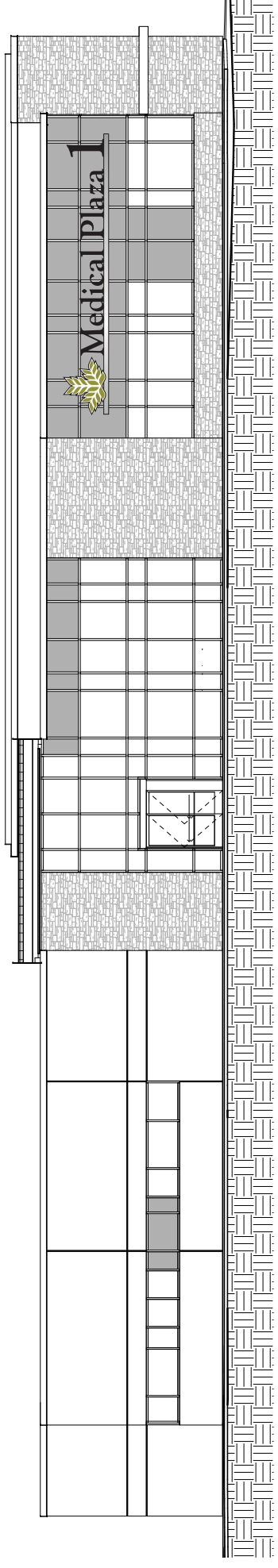
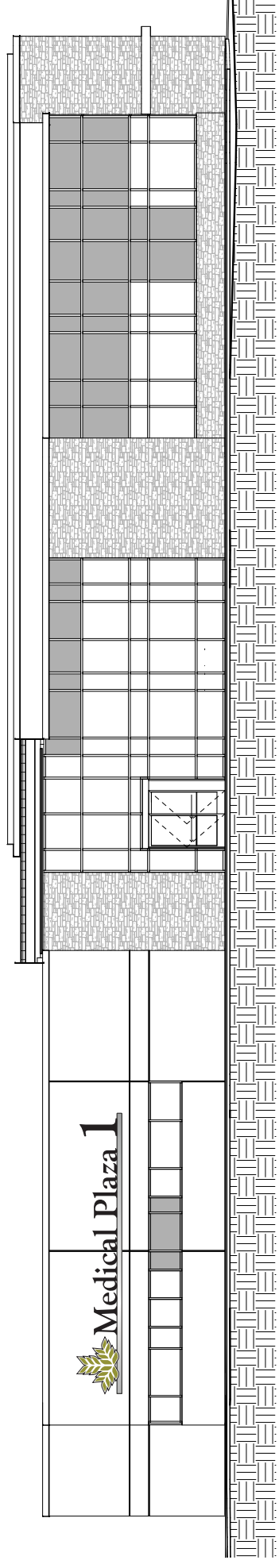


Site Approach: Base Option



POD Requests - Wall Signs

- Allow Internally Illuminated Wall Signs on all 4 sides of a buildings.
 - o Quantity: one (1) per Tenant, per Wall Elevation
 - o Sign Area: 150 sq. ft. per elevation, for single tenant; 175 sq. ft. combined, per elevation, for multiple tenants



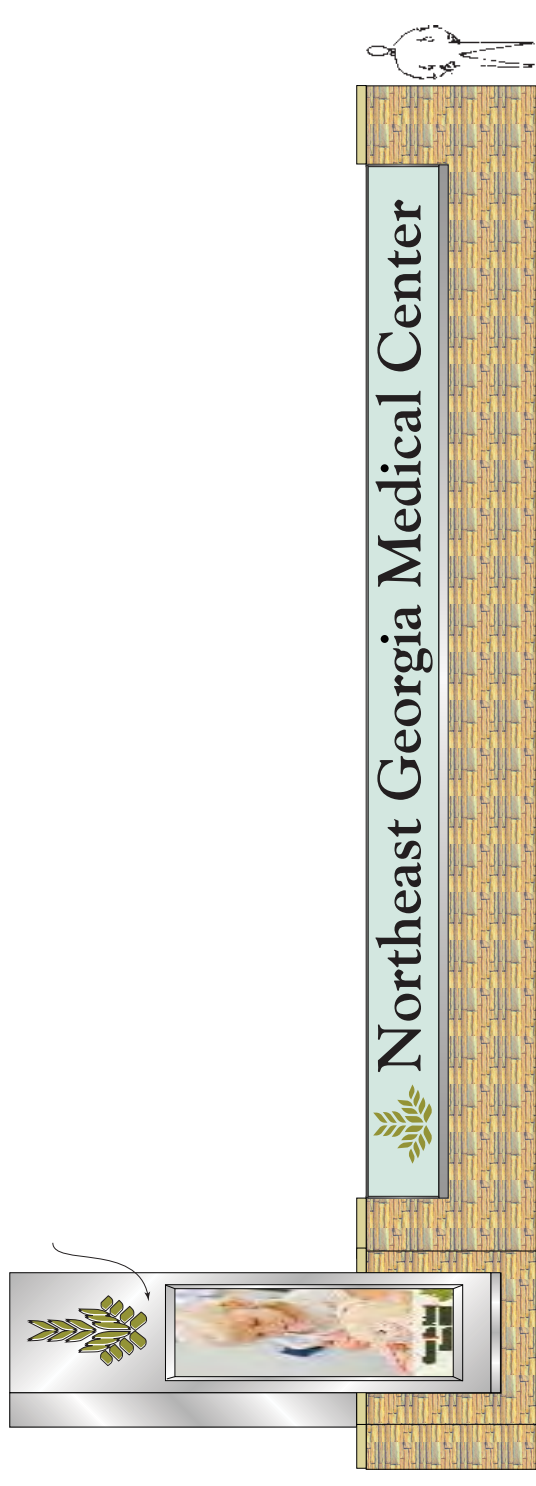


POD Requests - Campus Monumental Sign

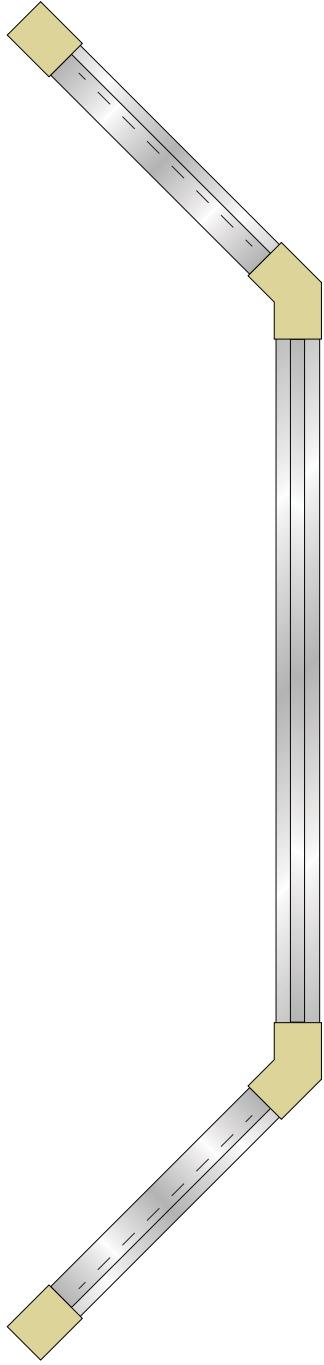
- Allow one (1) Campus Monumental Sign at the intersection of SR 60 and Southers Road
 - o Sign may be curved, angled (possibly greater than 60 degrees) or straight configuration, as needed
 - o Stone sign structure will be approx. 6' above grade, however sign structure may be incorporated into a retaining wall which could increase overall height.
 - o Interior Illuminated Sign Panels: 96 sq. ft. each, 1 per street elevation
 - o 170 sq. ft. permanent banner frames to display 90 sq ft banners, 1 per street elevation. Ground Illuminated Banners will be in place continuously and will change periodically.



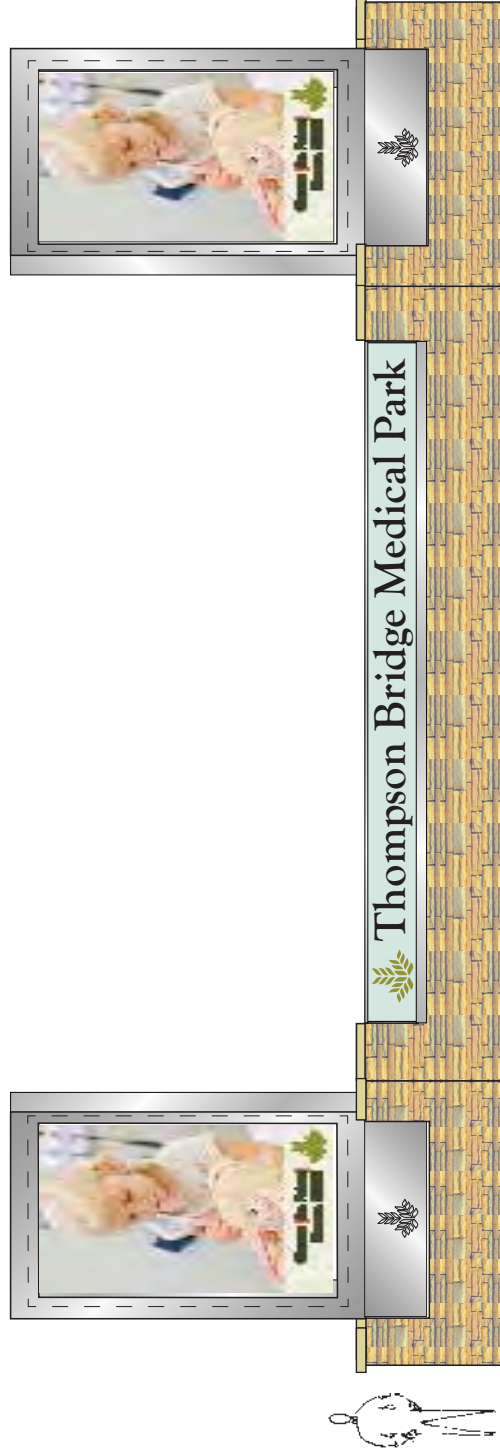
OPT 2 - PLAN



OPT 2 - FRONT ELEVATION



OPT 1 - PLAN

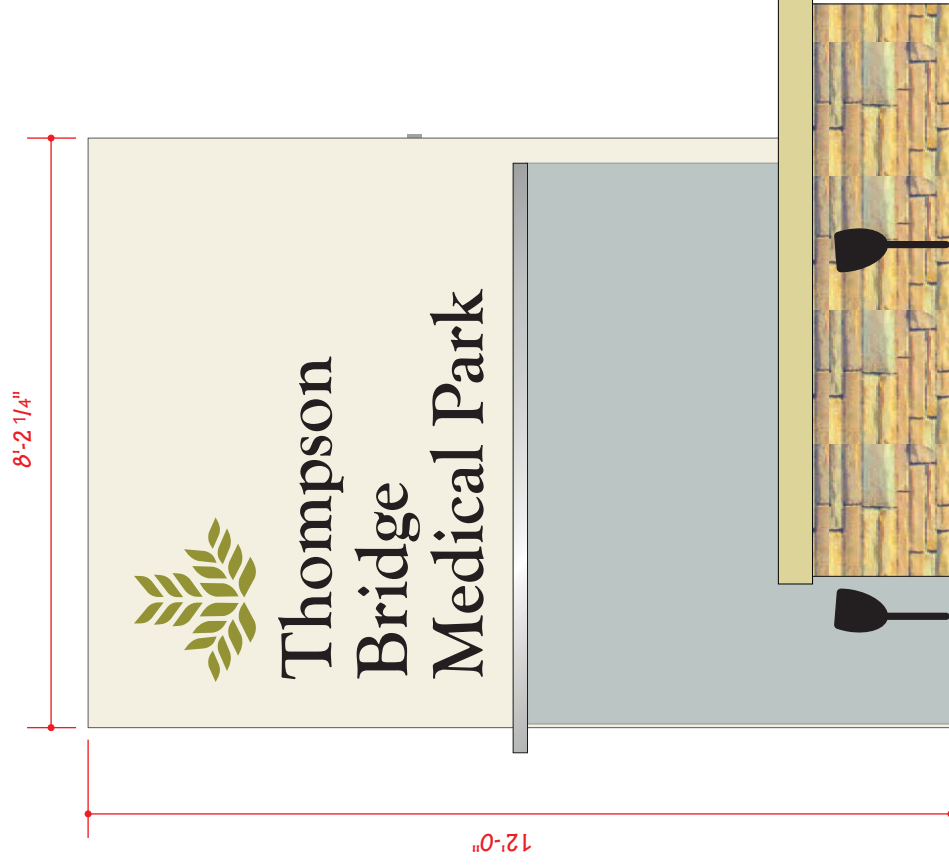


OPT 1 - FRONT ELEVATION

Campus Monumental Sign

POD Requests - Campus Entry Pylon

- Allow one (1) Campus Entry Pylon at each Campus Entry Drive
 - Materials: Stone Base w/ fabricated aluminum sign cabinet
 - Sign Area: 96 sq. ft.
 - Height: 12 ft. above street grade
 - Setback: 5' from R/W



Campus Entry Pylon

POD Requests - Building Monument

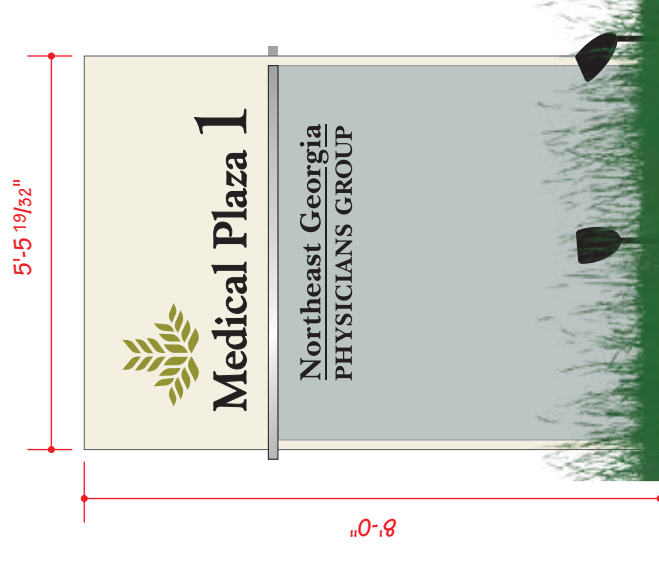
- Allow Building Monuments with
 - Aluminum Pylon without masonry base
 - Sign Area: 64 sq. ft.
 - Height: 10 ft. above street grade
 - Setback: 5' from R/W



Building Monument

POD Requests - Directory Signs

- Allow one (1) freestanding or building mounted Directory sign per building entry
 - Aluminum Pylon without masonry base
 - Sign Area: 44 sq. ft.
 - Height: 8' above street grade



Directory Sign

PARLAY 2.0: welcome, jarr... Your subscription is active.

Untitled Map

Write a description for your map.



Legend

- Feature 1
- Feature 2
- Untitled Path
- Untitled Polygon

Google Earth

WEBB

200 ft



Potential Access Drive Location

PRICE ROAD (SR 136)

45 MPH Posted

280' +/-

280' +/-

MCINTYRE

BRYANT

RODRIGUEZ

GARCIA

SIMPSON

POWELL

VICKERY

WALDEN

Meat Corral

CVS

CVS