

SITE SUMMARY

SITE AREA = +/- 7.51 ACRES

ZONING = O-1

USE = GENERAL OFFICE

SETBACKS = 30' FRONT
10' REAR
20' SIDE

WATER = CITY OF GAINESVILLE (PUBLIC)

SEWER = HALL COUNTY (PUBLIC)

PARKING SUMMARY- BUILDING A

PARKING REQUIRED -
3.5 SPACES PER 1,000 SF
BUILDING A = 1,500 SF
PARKING REQ = 3.5 x 1.5 = 5.25 SPACES

TOTAL PARKING REQUIRED = 5.25 SPACES
TOTAL PARKING PROVIDED = 7 SPACES

HANDICAP SPACES

1 REQUIRED - 1 PROVIDED

PARKING SUMMARY- BUILDING B

PARKING REQUIRED -
3.5 SPACES PER 1,000 SF
BUILDING B = 1,200 SF
PARKING REQ = 3.5 x 1.2 = 4.2 SPACES

TOTAL PARKING REQUIRED = 4.2 SPACES
TOTAL PARKING PROVIDED = 8 SPACES

HANDICAP SPACES

1 REQUIRED - 1 PROVIDED

SURVEY REFERENCE

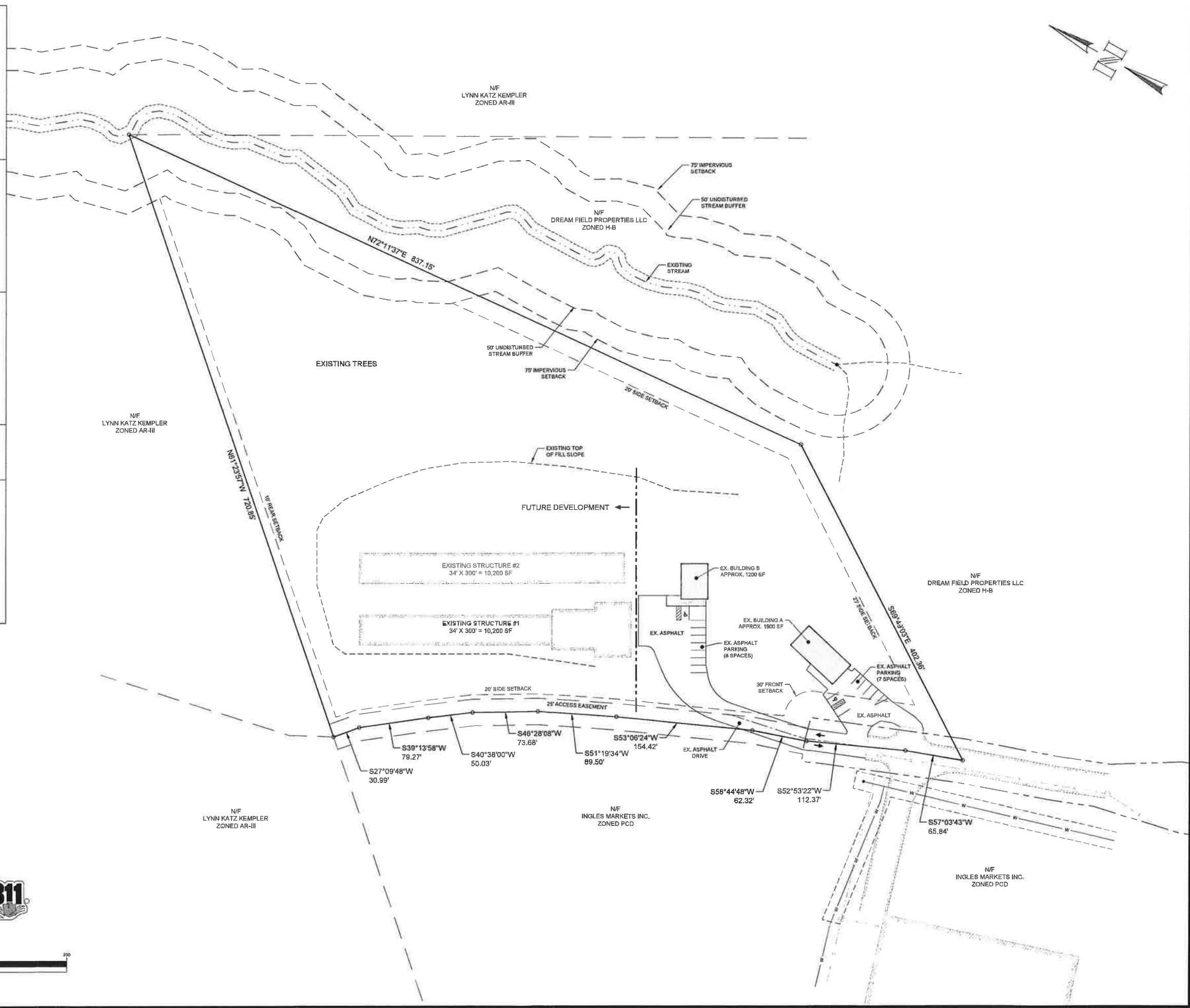
BOUNDARY INFORMATION SHOWN PER SURVEY FOR
DILLARD HUDGINS & KATHERINE RIDLEY PREPARED
BY DWIGHT KILBY, RLS DATED 6-15-1993.

OWNER/DEVELOPER

MAROUN AOUN
930 ANTRIM GLEN DR.
HOSCHTON, GA 30548
CONTACT: MAROUN AOUN
PHONE: 404-886-2987

CIVIL ENGINEER

REED PLANNING & DESIGN, INC.
100 OLD DAWSON VILLAGE RD, SUITE 110
DAWSONVILLE, GA 30534
CONTACT: KEVIN REED
PHONE: 706-531-8428



REED
PLANNING & DESIGN

100 Old Dawson Village Rd
Suite 110
Dawsonville, GA 30534
Phone: 706-531-8428

© 2021
REED PLANNING & DESIGN, INC.
ALL RIGHTS RESERVED

THESE CONSTRUCTION DOCUMENTS AND ANY REPRODUCTIONS, IN WHOLE OR IN PART, ARE THE SOLE PROPERTY OF REED PLANNING & DESIGN, INC. THEY SHALL NOT BE REPRODUCED OR COPIED IN ANY MANNER NOR ARE THEY TO BE USED FOR ANY OTHER PROJECTS OTHER THAN THE SPECIFICALLY INDICATED HEREIN WITHOUT WRITTEN PERMISSION FROM AND THE CONSENT OF REED PLANNING & DESIGN, INC.

STAMP

GSWCC LEVEL 2
CERTIFIED DESIGN
PROFESSIONAL

CERTIFICATION NO. 1639
EXPIRES 10/27/2023

JON GOMOLAK
4240 WINDER HIGHWAY
GENERAL OFFICE

PARCEL	15044B000009
LAND LOT	44
DISTRICT	15
CITY	-
COUNTY	HALL
STATE	GEORGIA

ZONING
EXHIBIT

JOB NUMBER	DATE
21106	7-11-2022

DATE	NO	REVISION

C-1

