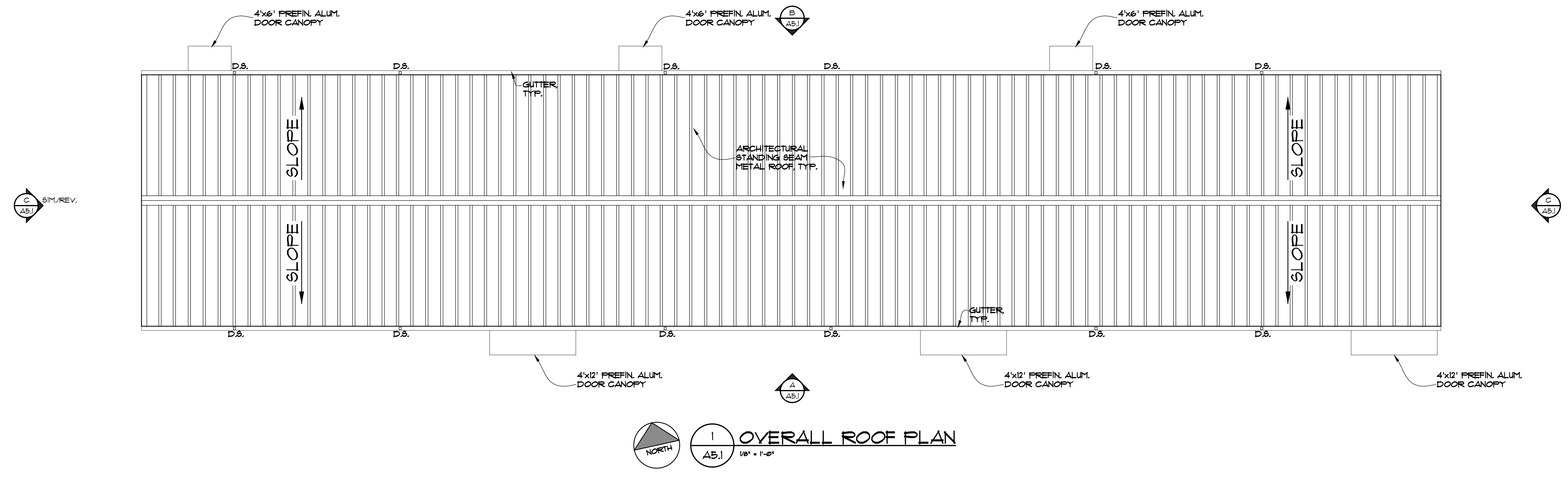
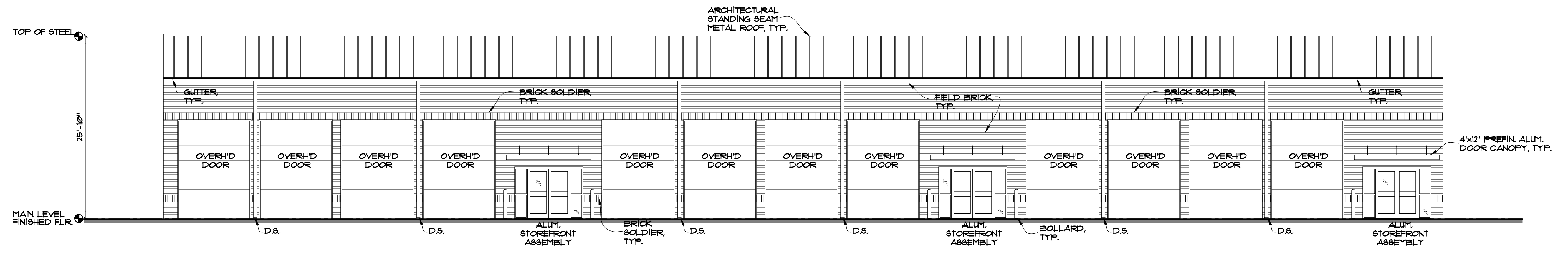


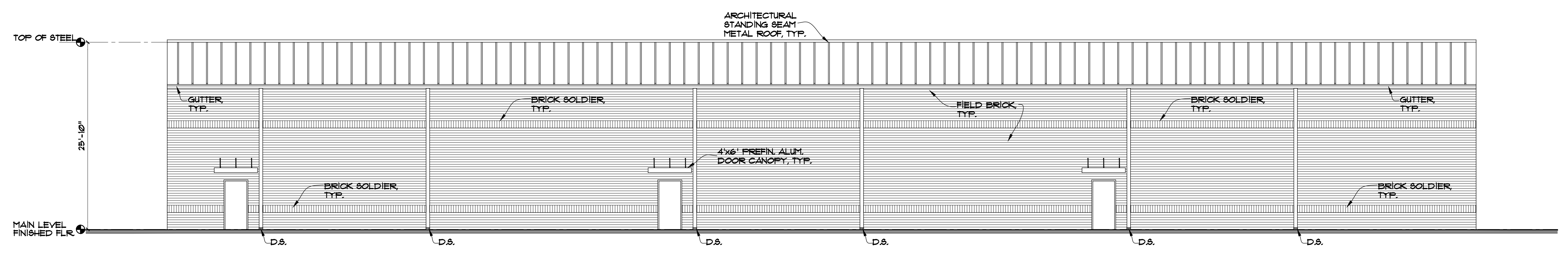
DRAWING ISSUE RECORD		
DATE	REVISIONS	NO.



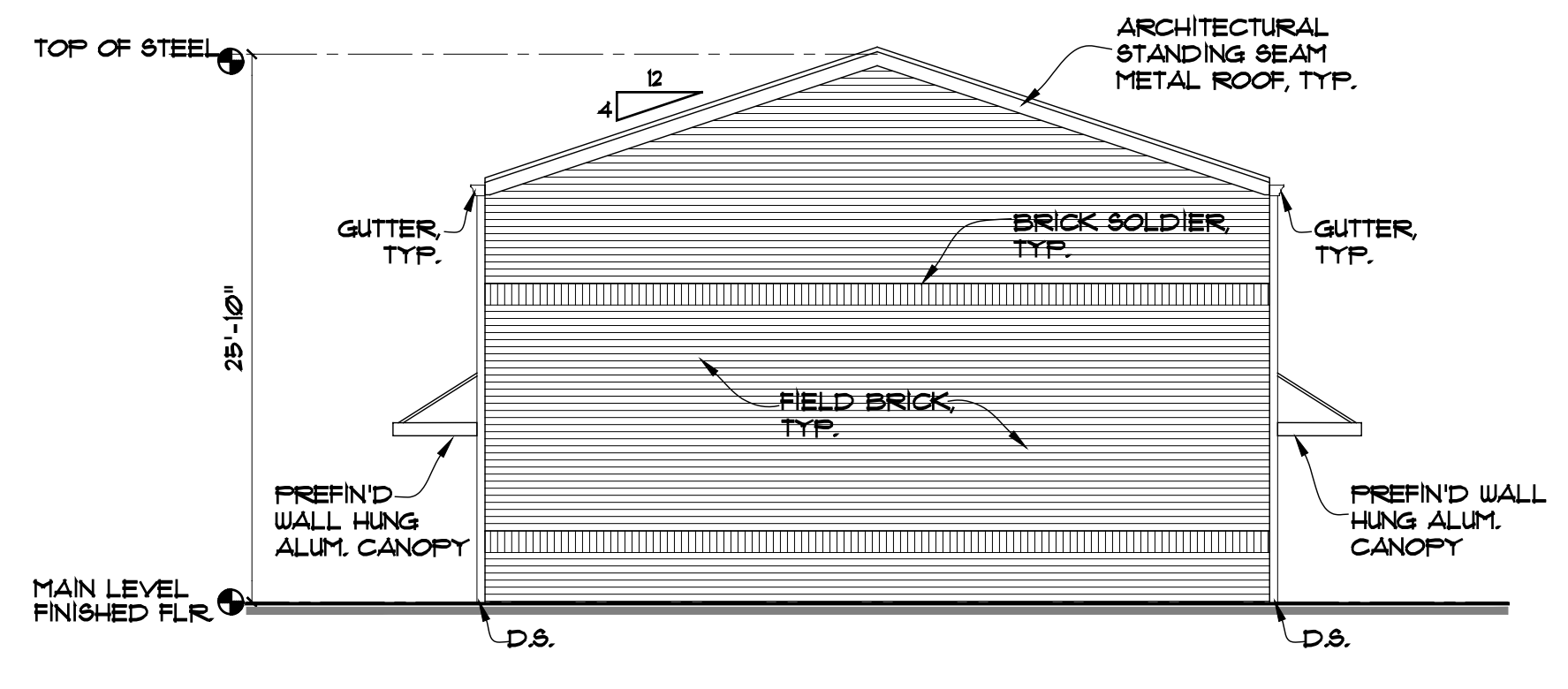
**OVERALL ROOF PLAN**  
1/8" = 1'-0"



**SOUTH ELEVATION**  
1/8" = 1'-0"



**NORTH ELEVATION**  
1/8" = 1'-0"

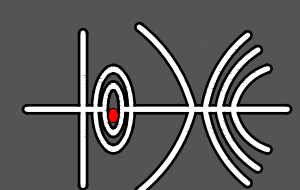


**EAST ELEVATION**  
1/8" = 1'-0"

BOAT REPAIR / SALES & BOAT/CAMPER STORAGE DEVELOPMENT  
FOR  
HM ENTERPRISE HOLDINGS, INC.  
6815 NEULBERTHANY ROAD  
BUFFORD, HALL COUNTY, GEORGIA 30518  
DATE: MARCH 30, 2023  
DRAWING NO.: HAL-2306-1  
DESIGNED BY: JDL  
CHECKED BY: JDL

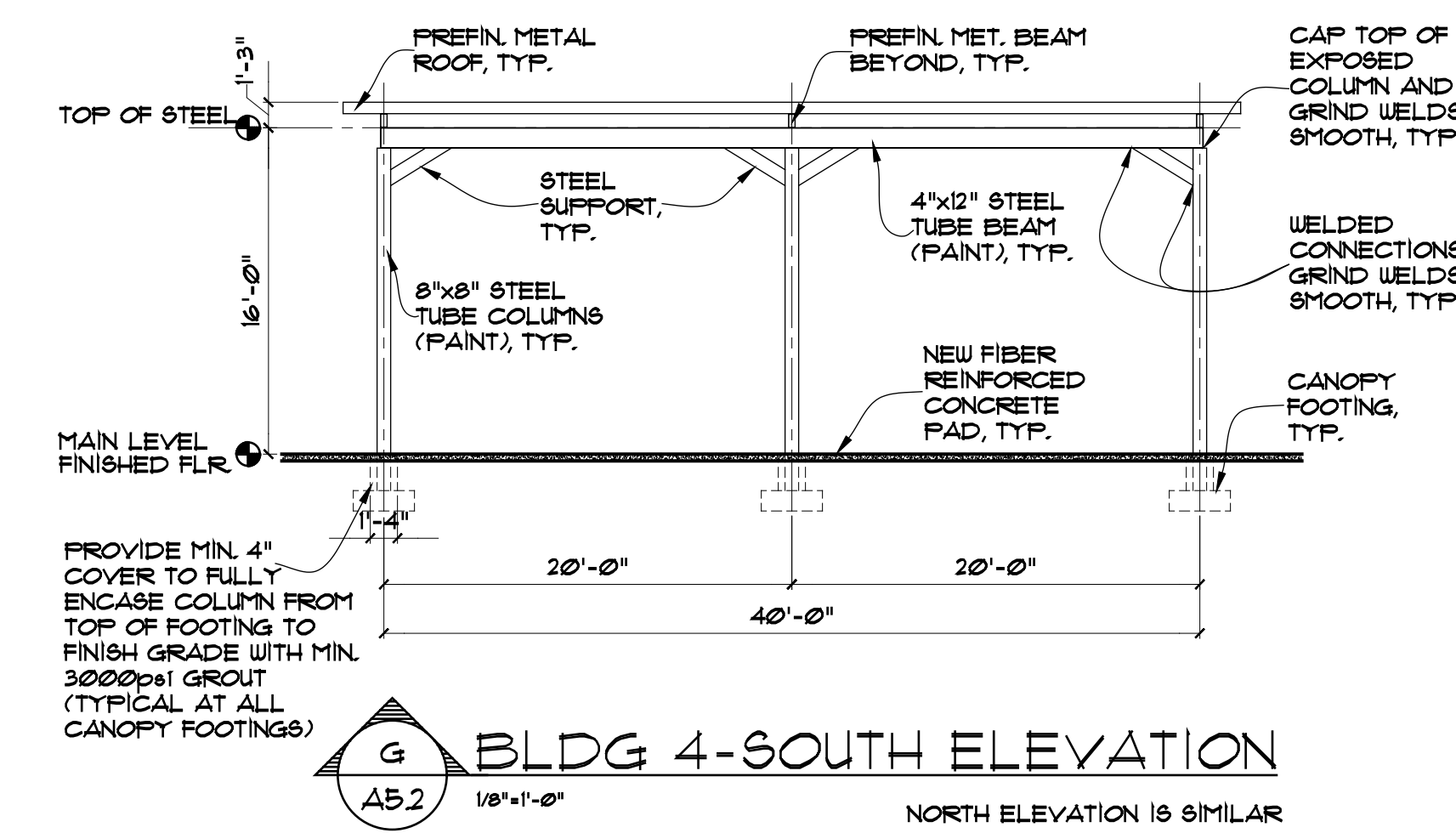
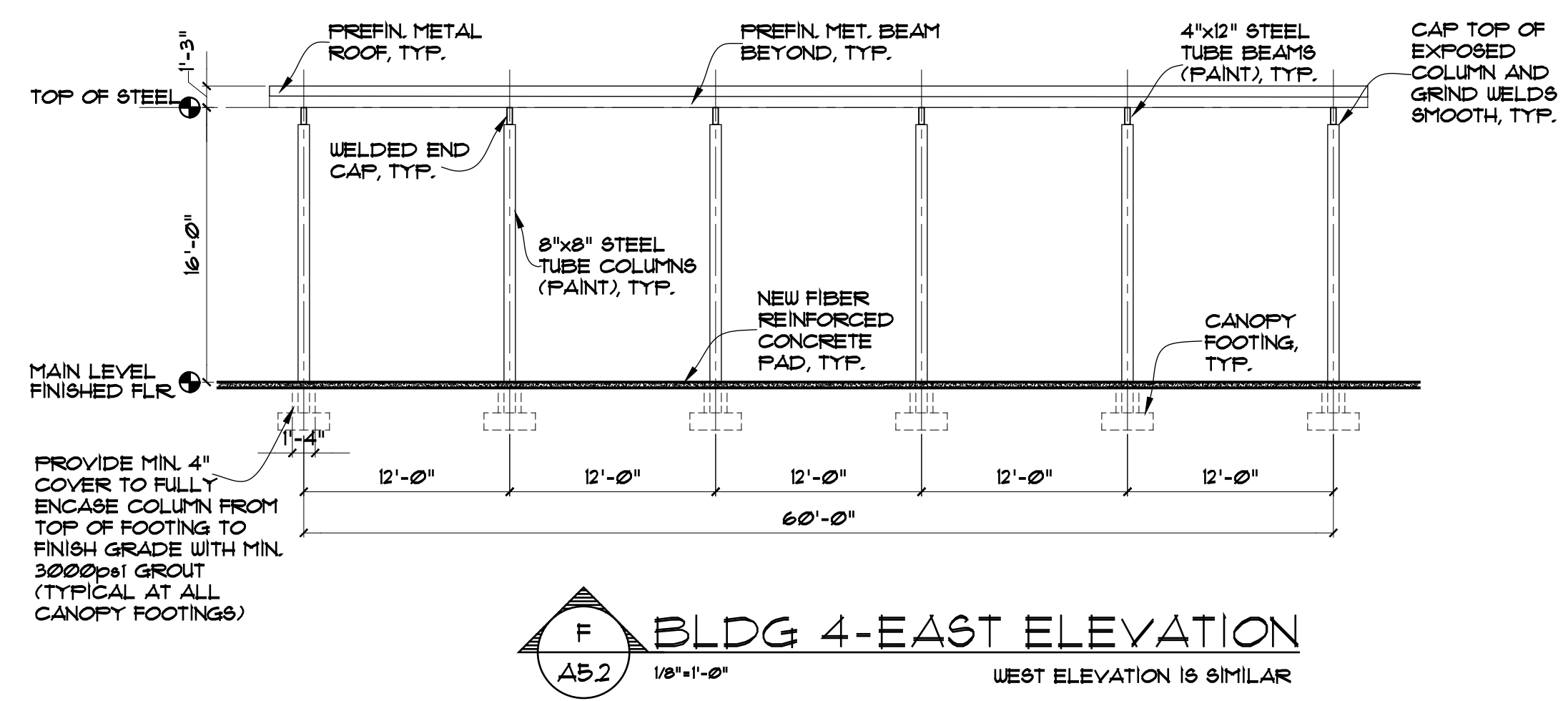
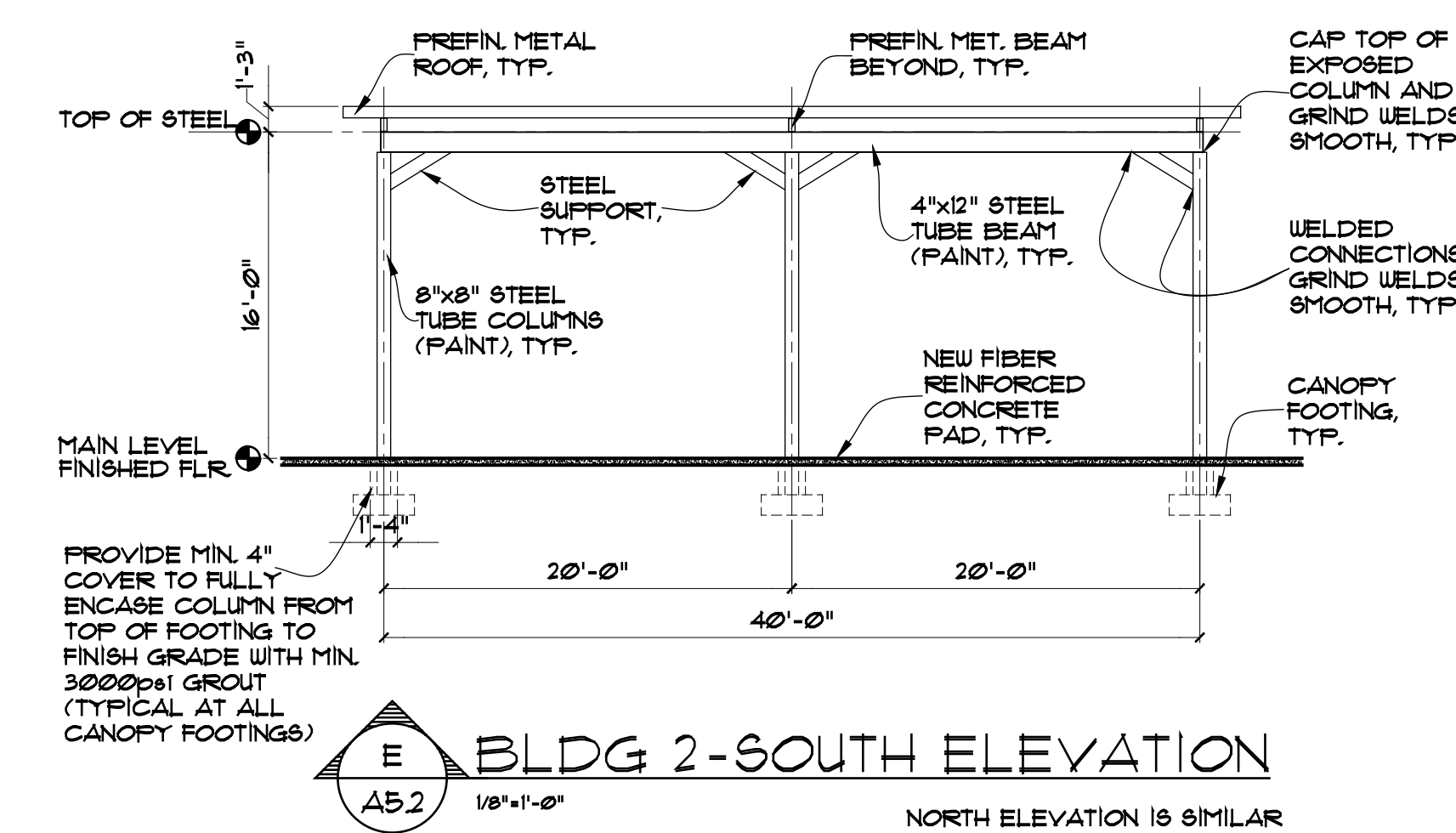
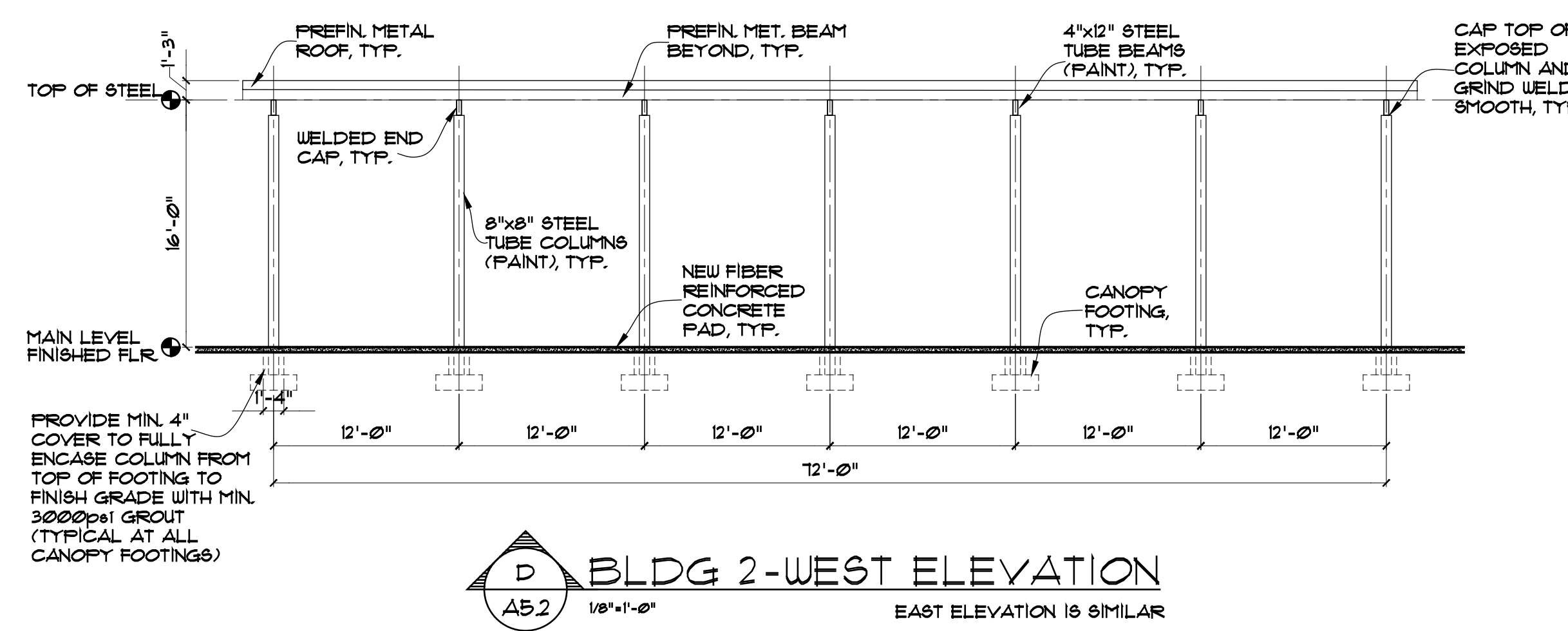
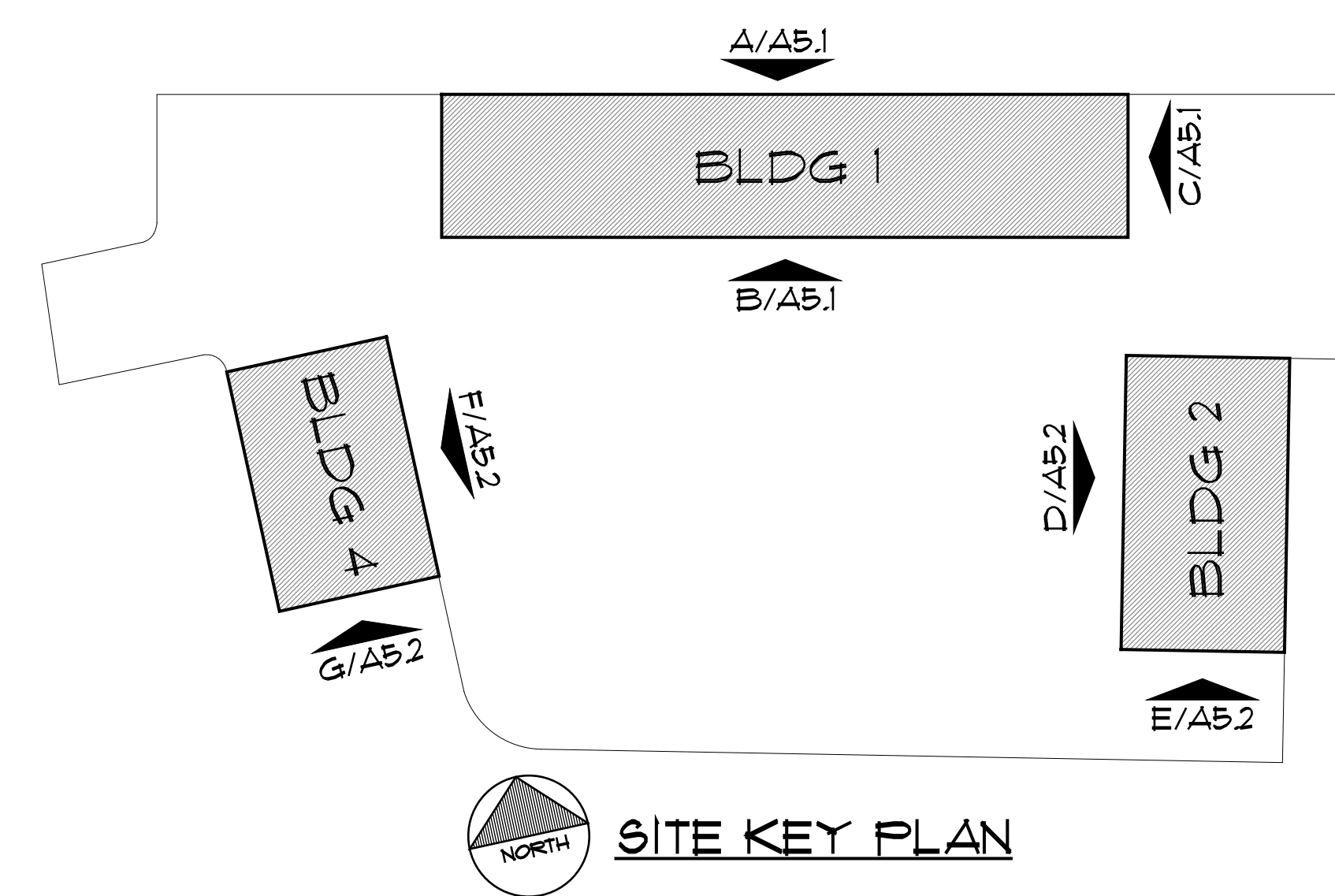
**cunningham forehand matthews moore**  
cunningham, forehand, matthews & moore, architects, inc. - 2011 manchester street, n.e. - atlanta, georgia 30324 - phone (404) 873-2152

DRAWING ISSUE RECORD		
DATE	REVISIONS	NO.



BOAT REPAIR / SALES & BOAT/CAMPER STORAGE DEVELOPMENT  
 FOR  
 HM ENTERPRISE HOLDINGS, INC.  
 6515 NEULBERTHANY ROAD  
 BUFORD, HALL COUNTY, GEORGIA 30018

DATE: MARCH 30, 2023  
 DRAWING NO.: HAL-2306-1  
 DESIGNED BY: JPL  
 CHECKED BY: JPL



**cunningham forehand matthews moore**

cunningham, forehand, matthews & moore, architects, inc. - 2011 manchester street, n.e. - atlanta, georgia 30324 - phone (404) 873-2152