



Call 678-364-3673

Directions (//maps.google.com/maps?saddr=Current%2BLocation&daddr=6790%20M...%20Zion%20Boulevard%20%2C%2BMorrow%2C%2BGA%2B30260)

Custom Order Your Ford

[HERE \(/custom-build-price.html\)](#)

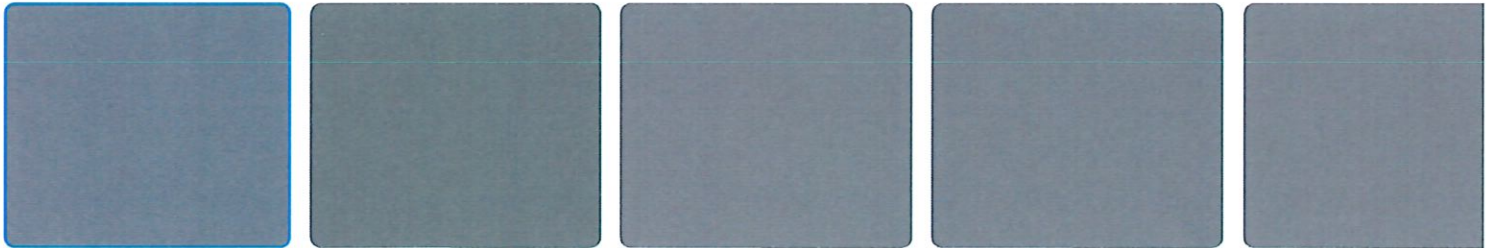


✓ Confirm Availability

PHOTOS 360 SPIN



1 / 36



2023 Ford F-150 XL

In Stock

\$54,825

ALLAN VIGIL PRICE:

Less ▲

MSRP	\$54,825
Admin Fee:	+\$699
Allan Vigil Price:	\$54,825
Trade-In Assistance Bonus Cash	-\$2,500
Retail Trade Assist	-\$1,000

Returning Explorer RCL Renewal	- \$1,000
2023 Military Recognition Exclusive Cash Reward	- \$500
2023 College Student Recognition Exclusive Cash Reward Pgm.	- \$500
2023 First Responder Recognition Exclusive Cash Reward	- \$500
2023 Farm Bureau Recognition Exclusive Cash Reward	- \$500

[Click To Call](#)

Make Your Trade

Instant Pre-Qualification. No SSN Required.

Start Today

Vehicle Information

Visit our Store

VIN: **1FTFW1E57PKD86949** Stock #: **PKD86949** Model Code: **W1E**


6790 Mt. Zion Boulevard
 Morrow, GA 30260 (<https://www.google.com/maps?>
 q=6790+Mt.+Zion+Boulevard+,+Morrow,+GA+30260) CITY/HIGHWAY
4D SuperCrew **16/22 MPG**

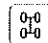





Sales: 678-364-3673

- EXTERIOR COLOR ENGINE
Black Metallic **5.0L V8 Engine with Auto Start-Stop Technology a...**
- INTERIOR COLOR TRANSMISSION
Black **10-Speed Automatic / 4WD**

★★★★★
 4.85 (13 Reviews (<https://www.edmunds.com/ford/f-150/2023/#subnav-consumer-reviews>)) - Edmunds.com (<https://www.edmunds.com/ford/f-150/2023/#subnav-consumer-reviews>)

Highlighted Features

 **VIEW WINDOW STICKER** Feature availability subject to final vehicle configuration. Please reference window sticker for more info.

-  **4WD/AWD**
-  **Keyless Entry**
-  **Power Tailgate/Liftgate**
-  **Emergency Brake Assist**
-  **Rear View Camera**
-  **Cruise Control**

Dealer Comments

Black Metallic 2023 Ford F-150 XL 4WD 10-Speed Automatic 5.0L V8 4WD, Body-Color Front & Rear Bumpers, Box Side Decals, Electronic Stability Control, Equipment Group 101A Standard,

Exterior Parking Camera Rear, Molded-In Color Black Honeycomb Style Grille, Power steering, Power windows, Radio: AM/FM SiriusXM w/360L, Rear Window Fixed Privacy Glass w/Defroster.

[Read More...](#)

All Features

- Exterior
- Functional
- Interior
- Safety
- Options
- Specs

- Daytime Running Lamps
- Easy Fuel Capless Filler
- Fully Boxed Steel Frame
- Halogen Headlamps
- Headlamps - Auto High Beam

[Read More...](#)

Warranty

- 3Yr/36,000 Bumper / Bumper
- 5Yr/60,000 Powertrain
- 5Yr/60,000 Roadside Assist
- 8Yr/100,000 Hybrid Battery

[Read More...](#)

Vehicles You Might Like



2022 Ford F-150
(<https://www.allanvigilford.net/new-morrow-2022-ford-f+150-lariat-1FTFW1E83NFC11002>)

\$62,720
ALLAN VIGIL PRICE:

[VIEW VEHICLE](#)

(<https://www.allanvigilford.net/new-morrow-2022-ford-f+150-lariat-1FTFW1E83NFC11002>)



2022 Ford F-150
(<https://www.allanvigilford.net/new-morrow-2022-ford-f+150-lariat-1FTFW1E84NFC27533>)

\$71,030
ALLAN VIGIL PRICE:

[VIEW VEHICLE](#)

(<https://www.allanvigilford.net/new-morrow-2022-ford-f+150-lariat-1FTFW1E84NFC27533>)



2022 Ford F-150
(<https://www.Allanvigilford.Net/New-Morrow-2022-Ford-F+150-XLT-1FTFW1E88NKF12016>)

2023 Ford F-150
(<https://www.Allanvigilford.Net/New-Morrow-2023-Ford-F+150-Platinum-1FTFW1ED1PFA85495>)

\$59,575
ALLAN VIGIL PRICE:

\$79,630
ALLAN VIGIL PRICE:

VIEW VEHICLE

(<https://www.Allanvigilford.Net/New-Morrow-2022-Ford-F+150-XLT-1FTFW1E88NKF12016>)

VIEW VEHICLE

(<https://www.Allanvigilford.Net/New-Morrow-2023-Ford-F+150-Platinum-1FTFW1ED1PFA85495>)

Although every reasonable effort has been made to ensure the accuracy of the information contained on this site, absolute accuracy cannot be guaranteed. This site, and all information and materials appearing on it, are presented to the user "as is" without warranty of any kind, either express or implied. All vehicles are subject to prior sale. Price does not include applicable tax, title, license, \$79 processing fee. †Vehicles shown at different locations are not currently in our inventory (Not in Stock) but can be made available to you at our location within a reasonable date from the time of your request, not to exceed one week.

May not represent actual vehicle. (Options, colors, trim and body style may vary)

Although every reasonable effort has been made to ensure the accuracy of the information contained on this site, absolute accuracy cannot be guaranteed. This site, and all information and materials appearing on it, are presented to the user "as is" without warranty of any kind, either express or implied. All vehicles are subject to prior sale. Price does not include applicable tax, title, license, \$79 processing fees. †Vehicles shown at different locations are not currently in our inventory (Not in Stock) but can be made available to you at our location within a reasonable date from the time of your request, not to exceed one week.

Copyright © 2023 by FordDirect | Sitemap (<http://www.allanvigilford.net/sitemap.aspx>) | FordDirect Privacy (<https://www.forddirectprivacy.com>) | Privacy (<http://www.allanvigilford.net/privacy.aspx>) | Additional Disclosures (<http://www.allanvigilford.net/ford-disclosure.aspx>) | Terms and Conditions (<https://www.forddirect.com/dealerconnection-terms>) | Login (<https://www.fordshowroom.com/>) | Allan Vigil Ford Lincoln | 6790 Mt. Zion Boulevard , Morrow, GA 30260 | Sales: 678-364-3673 | AdChoices  (<https://www.forddirect.com/adchoices>)

KAN-003582 FL

9-NORMAL, NB, 203582, PC082 12904

220230316 0222

DLIC [CERT] [CERT] [TRD] [RAMP] [BUMP] [CAMP] [BOOK] [EXPL] [ROTA]

012541 265773621

1FTFW1E57 PKD86949 NB FU13

F-150

2023 F-150 X4 SUPERCREW
5.0L V8 FLEX FUEL
ELEC TEN-SPEED AUTO W/TOW M



ford.com

VEHICLE DESCRIPTION

PK D86949

EXTERIOR
BLACK METALLIC
INTERIOR
BLACK SPORT CLOTH/40/CON/40

STANDARD EQUIPMENT INCLUDED AT NO EXTRA CHARGE

- INTERIOR**
- 4" PRODUCTIVITY SCREEN
 - CRUISE CONTROL
 - DOOR LOCKS - POWER
 - DUAL SUNVISORS
 - ILLUMINATED ENTRY
 - MESSAGE CTR: OUTSIDE TEMP, COMPASS, TRIP COMPUTER
 - POWERPOINTS - 12V
 - TILT/TELESCOPE STR COLUMN

- FUNCTIONAL**
- AUTO HOLD
 - CURVE CONTROL
 - DYNAMIC HITCH ASSIST
 - FAIL-SAFE COOLING SYSTEM
 - FORDPASS CONNECT™ 4G
 - HILLSIDE DESCENT CONTROL
 - HILL START ASSIST
 - MYKEY®
 - POST-COLLISION BRAKING
 - PRE-COLLISION ASSIST W/AEB
 - REVERSE SENSING AND REAR VIEW CAMERA
 - SELECTSHIFT®
 - SYNC® 4 W/8" SCREEN

- SAFETY/SECURITY**
- ADVANCTRACT™ WITH RSC®
 - AIRBAGS - FRONT SEAT MOUNTED SIDE IMPACT
 - AIRBAGS - SAFETY CANOPY®
 - CTR: HIGH MOUNT STOP LAMP
 - PERIMETER ALARM
 - SOS POST-CRASH ALERT SYS™
 - TIRE PRESSURE MONIT SYS
- WARRANTY**
- 3YR/36,000 BUMPER / BUMPER
 - 5YR/60,000 POWERTRAIN
 - 5YR/60,000 ROADSIDE ASSIST
 - 8YR/100,000 HYBRID BATTERY

INCLUDED ON THIS VEHICLE

- EQUIPMENT GROUP 101A**
- XL SERIES
- OPTIONAL EQUIPMENT/OTHER**
- 5.0L V8 ENGINE 2,335.00
 - 272/60R20 BSW ALL-TERRAIN NO CHARGE
 - 3.31 ELECTRONIC LOCK RR AXLE 420.00
 - 7050# GWR PACKAGE NO CHARGE
 - FRONT LICENSE PLATE BRACKET 145.00
 - COLOR-COORDINATED CARPET 250.00
 - BLACK PLATFORM RUNNING BOARDS 2,585.00
 - STX APPEARANCE PACKAGE
 - SYNC 4 W/ENHANCED VOICE RECOG
 - REAR WINDOW DEFROSTER
 - SIRIUS XM W/ 360L
 - PRIVACY GLASS W/REAR DEFROSTE
 - 50 STATE EMISSIONS NO CHARGE
 - AUTO START-STOP REMOVAL - 50.00
 - CLASS IV TRAILER HITCH 315.00
 - FOG LAMPS NO CHARGE
 - 20" 6-SPOKE MAGNETIC PKT WHLS 1,225.00
 - STX SPORT CLOTH 40/CON/40 295.00
 - FLEX FUEL VEHICLE

PRICE INFORMATION

BASE PRICE	\$45,410.00
TOTAL OPTIONS/OTHER	7,520.00
TOTAL VEHICLE & OPTIONS/OTHER	52,930.00
DESTINATION & DELIVERY	1,895.00
TOTAL BEFORE DISCOUNTS	54,825.00
XL DISCOUNT	- 750.00
STX APPEARANCE DISC	- 750.00
XL STX WHEEL DISCOUNT	- 595.00
TOTAL SAVINGS	- 2,095.00

RAMP ONE

CH7Z

RAMP TWO

CONVOY

ITEM #:

24-1008 OT 2

TOTAL MSRP \$52,730.00

Whether you decide to lease or finance your vehicle, you'll find the choices that are right for you. See your dealer for details or visit www.ford.com/finance.

PC082 N RB 2X 340 003582 03 08 23

This label is affixed pursuant to the Federal Automobile Information Disclosure Act. Gasoline, License, and Title Fees, State and Local taxes are not included. Dealer installed options or accessories are not included unless listed above.

Fuel Economy and Environment

E85 Flexible-Fuel Vehicle Gasoline-Ethanol (E85)

Fuel Economy
Standard Pickup Trucks range from 12 to 70 MPG. The best vehicle rates 132 MPGe. Values are based on gasoline and do not reflect performance and ratings based on E85.

18 MPG
combined city/hwy

16 city
22 highway
5.6 gallons per 100 miles

Driving Range
Gasoline 435 miles
Ethanol (E85) 375 miles

You spend more in fuel costs over 5 years compared to the average new vehicle.

\$4,250

Fuel Economy & Greenhouse Gas Rating (EPA only) **Smog Rating** (EPA only)

Annual fuel cost \$2,450

4

10 Best
6 Best
10 Best

This vehicle emits 495 grams CO₂ per mile. The best emits 0 grams per mile (EPA only). Producing and distributing fuel also create emissions; learn more at fuelconomy.gov.

Actual results will vary for many reasons, including driving conditions and how you drive and maintain your vehicle. Fuel economy, emissions, and smog ratings are based on 15,000 miles per year at \$2.95 per gallon. This is a dual-fueled automobile. MPGe is miles per gasoline gallon equivalent. Vehicle emissions are a significant cause of climate change and smog.

fuelconomy.gov

Calculate personalized estimates and compare vehicles

GOVERNMENT 5-STAR SAFETY RATINGS

Overall Vehicle Score ★ ★ ★ ★ ★

Based on the combined ratings of frontal, side and rollover. Should ONLY be compared to other vehicles of similar size and weight.

Frontal Crash ★ ★ ★ ★ ★
Driver Passenger ★ ★ ★ ★ ★

Based on the risk of injury in a frontal impact. Should ONLY be compared to other vehicles of similar size and weight.

Side Crash ★ ★ ★ ★ ★
Front seat Rear seat ★ ★ ★ ★ ★

Based on the risk of injury in a side impact.

Rollover ★ ★ ★ ★ ★

Based on the risk of rollover in a single-vehicle crash.

Star ratings range from 1 to 5 stars (★ ★ ★ ★ ★), with 5 being the highest.

Source: National Highway Traffic Safety Administration (NHTSA).

www.safercar.gov or 1-888-327-4236

1FTFW1E57PKD86949



WARNING: Operating, servicing and maintaining a passenger vehicle, pickup truck, van, or off-road vehicle can expose you to chemicals including engine exhaust, carbon monoxide, phthalates, and lead, which are known to the State of California to cause cancer and birth defects or other reproductive harm. To minimize exposure, avoid breathing exhaust, do not idle the engine except as necessary, service your vehicle in a well-ventilated area and wear gloves or wash your hands frequently when servicing your vehicle. For more information go to www.P65Warnings.ca.gov/passenger-vehicle.

FORD PROTECT
Continued Service Plan

Inside on Ford Protect! The only extended service plan fully backed by Ford and honored at every Ford dealership in the U.S., Canada and Mexico. See your Ford dealer or visit www.FordProtect.com.

SCAN OR TEXT: 3FPC08B00 TO 86828



Get 0 Data
rate may
apply.
Text HELP
for help
www.ford.com/help/privacy-policy

46 BUILT FORD YEARS TOUGH F-SERIES BEST AMERICA'S BEST SELLING TRUCKS

The FordPass® Connect modern is the most powerful and secure data vehicle (e.g., diagnostic) to Ford's®. Use vehicle settings for connectivity options.

*Based on 1977-2022 CY total sales.
**FordPass Connect (optional on select vehicles). The FordPass App and complimentary Connected Service (CS) are available on select vehicles. See FordPass Terms for details. Connected service and features depend on compatible AT&T network availability. Evolving technology/cellular network availability may affect connectivity and prevent operation of connected features. Connected service excludes Wi-Fi hotspot.

2202303160222

07/25/2023