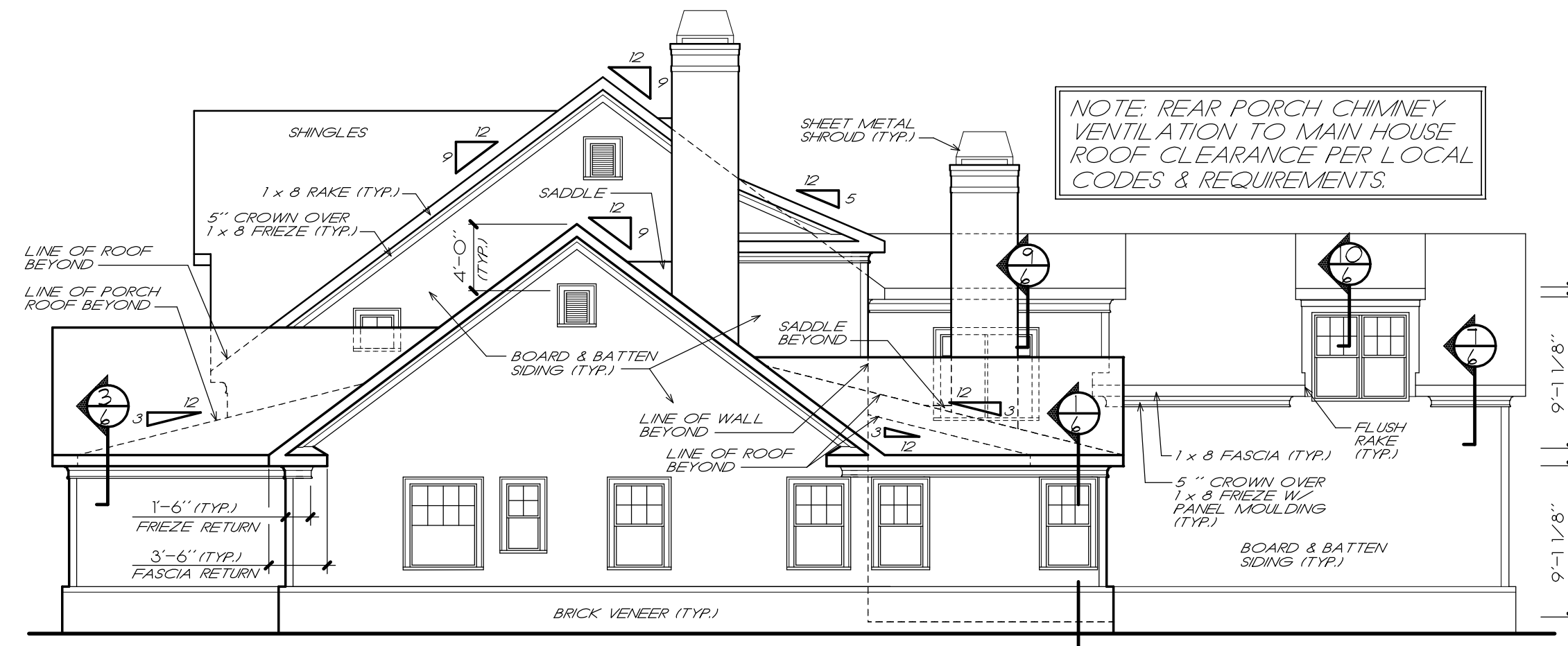


LEFT ELEVATION
1/8" = 1'-0"

PROVIDE SUPPORT FOR PORCH AND STEPS TO GRADE AS REQ'D.



RIGHT ELEVATION
1/8" = 1'-0"

NOTE: REAR PORCH CHIMNEY VENTILATION TO MAIN HOUSE ROOF. CLEARANCE PER LOCAL CODES & REQUIREMENTS.



REAR ELEVATION
1/8" = 1'-0"

PRELIMINARY NOT FOR CONSTRUCTION

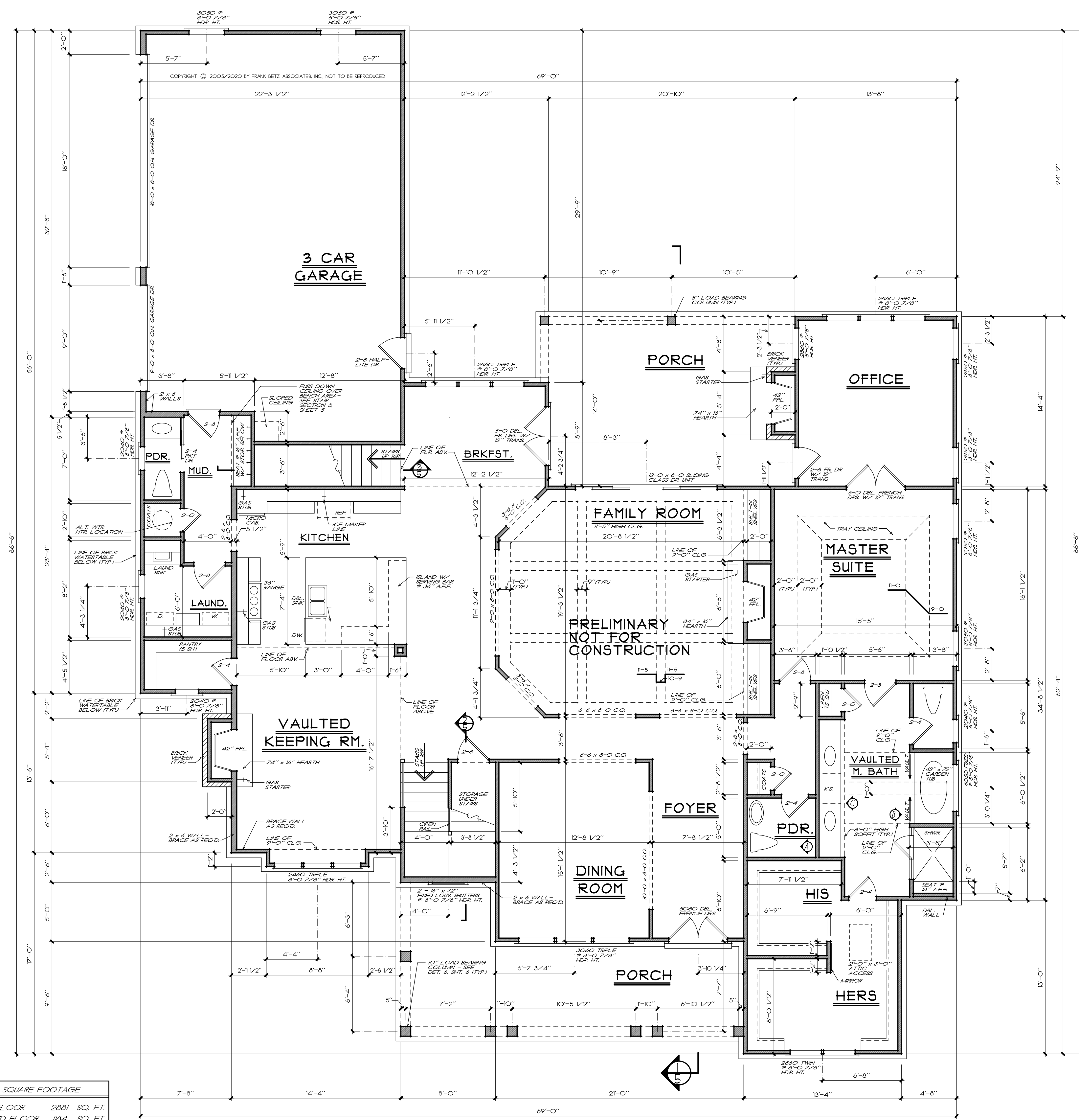


FRONT ELEVATION
1/4" = 1'-0"

NOTE: WHEN TWO ROOFS INTERSECT WITH DIFFERENT ROOF PITCHES, BLOCK TOP OF STUD WALLS AS REQ'D. TO LINE UP FASCIAS AT A MINIMUM OF 1'-0" OVERHANG.

NOTE: ATTIC VENTILATION PER LOCAL CODES AND REQUIREMENTS.

NOTE: RAFTERS ARE PITCHED FROM TOP OF CEILING JOISTS. SEE DETAILS.

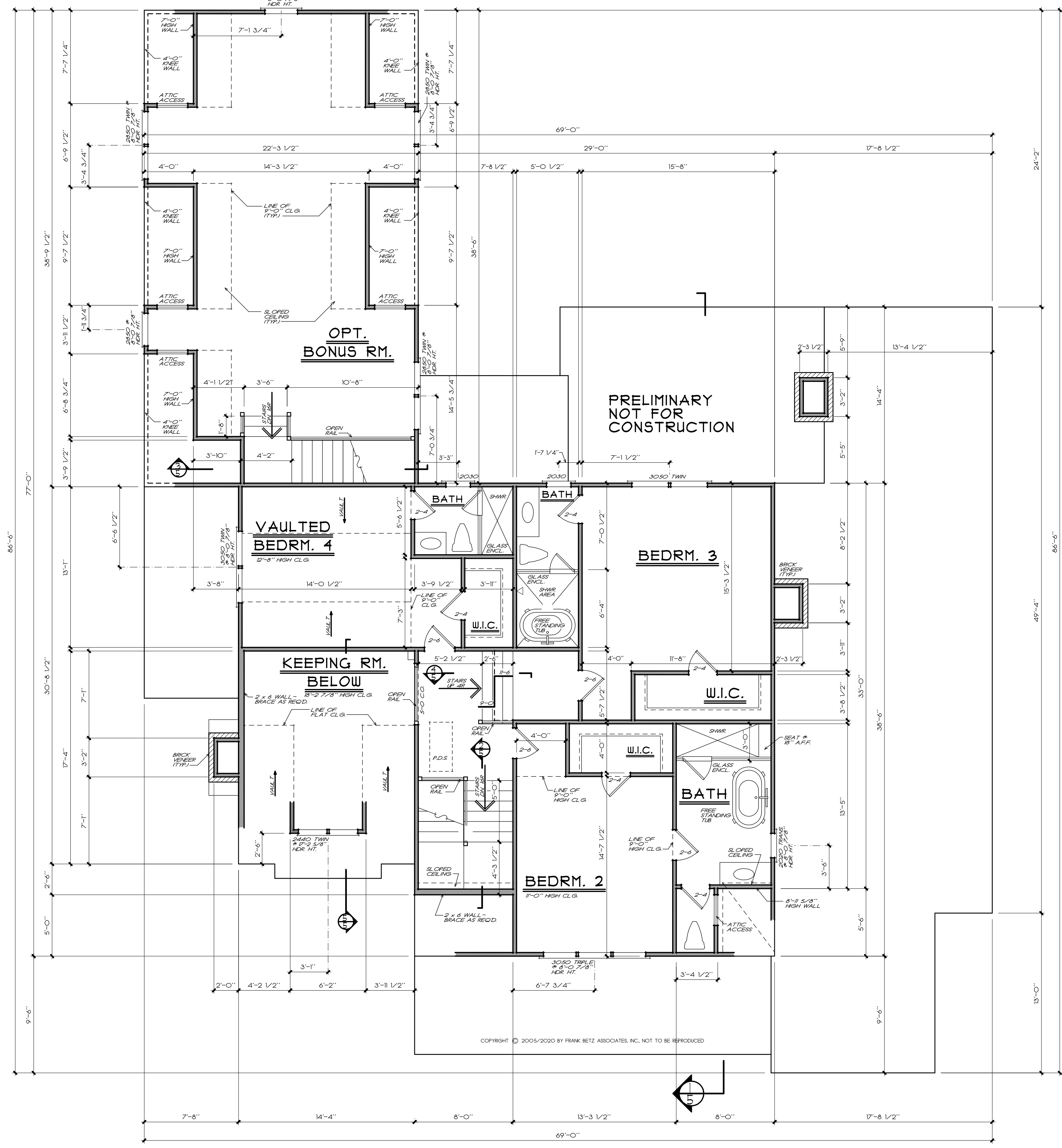


SQUARE FOOTAGE	
FIRST FLOOR	2881 SQ. FT.
SECOND FLOOR	184 SQ. FT.
TOTAL	4065 SQ. FT.
OPT. BONUS RM.	645 SQ. FT.
TOTAL	4730 SQ. FT.

NOTE: ALL ANGLES ARE 45° UNLESS OTHERWISE NOTED

FIRST FLOOR PLAN
3/18/10

NOTE ALL CEILING JOISTS AND RAFTER BRACINGS TO BEAR ON LOAD BEARING WALLS DESIGNED TO CARRY LOAD FROM ALL LEVELS AND TERMINATE AT FOUNDATION AND BE SUPPORTED BY THICKENED SLAB GRADE BEAM OR FOOTING DESIGNED TO CARRY LOAD.



SECOND FLOOR PLAN
3/8" = 1'-0"

COPYRIGHT © 2005/2020 BY FRANK BETZ ASSOCIATES INC. NOT TO BE REPRODUCED